

7/23/87 PM
7/24/87 noon

PERMIT

SEWAGE DISPOSAL SYSTEM

MARYLAND STATE DEPARTMENT OF HEALTH

HOWARD COUNTY
BUREAU OF ENVIRONMENTAL HEALTH
461-9933

04-344294

P 39529

A 34977

DISTRICT 4th

DATE 6/30/87

DATE SYSTEM APPROVED 7/27/87

INSPECTOR William

INDEXED

T & R Plumbing and Heating, Inc.

IS PERMITTED TO INSTALL ALTER

ADDRESS 11974 Scaggsville Road, Fulton, Maryland 20759 PHONE 725-2392

SUBDIVISION Haines Property ROAD 17756 Hardy Road LOT 2

PROPERTY OWNER James Dewitt

ADDRESS _____

IF GARBAGE GRINDER IS USED INCREASE SEPTIC TANK CAPACITY BY 50% AND ABSORPTION AREA BY 22%.

GARBAGE GRINDER? YES _____ NO

SEPTIC TANK CAPACITY 1250 GALLONS NUMBER OF BEDROOMS 3 BR.

Handwritten calculations:
187 + 190 = 377
10 + 13 = 23
377 + 23 = 400
400 / 3 = 133.33
133.33 + 115 = 248.33
248.33 * 1.5 = 372.5
372.5 + 115 = 487.5
487.5 + 115 = 602.5
602.5 + 115 = 717.5
717.5 + 115 = 832.5
832.5 + 115 = 947.5
947.5 + 115 = 1062.5
1062.5 + 115 = 1177.5
1177.5 + 115 = 1292.5
1292.5 + 115 = 1407.5
1407.5 + 115 = 1522.5
1522.5 + 115 = 1637.5
1637.5 + 115 = 1752.5
1752.5 + 115 = 1867.5
1867.5 + 115 = 1982.5
1982.5 + 115 = 2097.5
2097.5 + 115 = 2212.5
2212.5 + 115 = 2327.5
2327.5 + 115 = 2442.5
2442.5 + 115 = 2557.5
2557.5 + 115 = 2672.5
2672.5 + 115 = 2787.5
2787.5 + 115 = 2902.5
2902.5 + 115 = 3017.5
3017.5 + 115 = 3132.5
3132.5 + 115 = 3247.5
3247.5 + 115 = 3362.5
3362.5 + 115 = 3477.5
3477.5 + 115 = 3592.5
3592.5 + 115 = 3707.5
3707.5 + 115 = 3822.5
3822.5 + 115 = 3937.5
3937.5 + 115 = 4052.5
4052.5 + 115 = 4167.5
4167.5 + 115 = 4282.5
4282.5 + 115 = 4397.5
4397.5 + 115 = 4512.5
4512.5 + 115 = 4627.5
4627.5 + 115 = 4742.5
4742.5 + 115 = 4857.5
4857.5 + 115 = 4972.5
4972.5 + 115 = 5087.5
5087.5 + 115 = 5202.5
5202.5 + 115 = 5317.5
5317.5 + 115 = 5432.5
5432.5 + 115 = 5547.5
5547.5 + 115 = 5662.5
5662.5 + 115 = 5777.5
5777.5 + 115 = 5892.5
5892.5 + 115 = 6007.5
6007.5 + 115 = 6122.5
6122.5 + 115 = 6237.5
6237.5 + 115 = 6352.5
6352.5 + 115 = 6467.5
6467.5 + 115 = 6582.5
6582.5 + 115 = 6697.5
6697.5 + 115 = 6812.5
6812.5 + 115 = 6927.5
6927.5 + 115 = 7042.5
7042.5 + 115 = 7157.5
7157.5 + 115 = 7272.5
7272.5 + 115 = 7387.5
7387.5 + 115 = 7502.5
7502.5 + 115 = 7617.5
7617.5 + 115 = 7732.5
7732.5 + 115 = 7847.5
7847.5 + 115 = 7962.5
7962.5 + 115 = 8077.5
8077.5 + 115 = 8192.5
8192.5 + 115 = 8307.5
8307.5 + 115 = 8422.5
8422.5 + 115 = 8537.5
8537.5 + 115 = 8652.5
8652.5 + 115 = 8767.5
8767.5 + 115 = 8882.5
8882.5 + 115 = 8997.5
8997.5 + 115 = 9112.5
9112.5 + 115 = 9227.5
9227.5 + 115 = 9342.5
9342.5 + 115 = 9457.5
9457.5 + 115 = 9572.5
9572.5 + 115 = 9687.5
9687.5 + 115 = 9802.5
9802.5 + 115 = 9917.5
9917.5 + 115 = 10032.5
10032.5 + 115 = 10147.5
10147.5 + 115 = 10262.5
10262.5 + 115 = 10377.5
10377.5 + 115 = 10492.5
10492.5 + 115 = 10607.5
10607.5 + 115 = 10722.5
10722.5 + 115 = 10837.5
10837.5 + 115 = 10952.5
10952.5 + 115 = 11067.5
11067.5 + 115 = 11182.5
11182.5 + 115 = 11297.5
11297.5 + 115 = 11412.5
11412.5 + 115 = 11527.5
11527.5 + 115 = 11642.5
11642.5 + 115 = 11757.5
11757.5 + 115 = 11872.5
11872.5 + 115 = 11987.5
11987.5 + 115 = 12102.5
12102.5 + 115 = 12217.5
12217.5 + 115 = 12332.5
12332.5 + 115 = 12447.5
12447.5 + 115 = 12562.5
12562.5 + 115 = 12677.5
12677.5 + 115 = 12792.5
12792.5 + 115 = 12907.5
12907.5 + 115 = 13022.5
13022.5 + 115 = 13137.5
13137.5 + 115 = 13252.5
13252.5 + 115 = 13367.5
13367.5 + 115 = 13482.5
13482.5 + 115 = 13597.5
13597.5 + 115 = 13712.5
13712.5 + 115 = 13827.5
13827.5 + 115 = 13942.5
13942.5 + 115 = 14057.5
14057.5 + 115 = 14172.5
14172.5 + 115 = 14287.5
14287.5 + 115 = 14402.5
14402.5 + 115 = 14517.5
14517.5 + 115 = 14632.5
14632.5 + 115 = 14747.5
14747.5 + 115 = 14862.5
14862.5 + 115 = 14977.5
14977.5 + 115 = 15092.5
15092.5 + 115 = 15207.5
15207.5 + 115 = 15322.5
15322.5 + 115 = 15437.5
15437.5 + 115 = 15552.5
15552.5 + 115 = 15667.5
15667.5 + 115 = 15782.5
15782.5 + 115 = 15897.5
15897.5 + 115 = 16012.5
16012.5 + 115 = 16127.5
16127.5 + 115 = 16242.5
16242.5 + 115 = 16357.5
16357.5 + 115 = 16472.5
16472.5 + 115 = 16587.5
16587.5 + 115 = 16702.5
16702.5 + 115 = 16817.5
16817.5 + 115 = 16932.5
16932.5 + 115 = 17047.5
17047.5 + 115 = 17162.5
17162.5 + 115 = 17277.5
17277.5 + 115 = 17392.5
17392.5 + 115 = 17507.5
17507.5 + 115 = 17622.5
17622.5 + 115 = 17737.5
17737.5 + 115 = 17852.5
17852.5 + 115 = 17967.5
17967.5 + 115 = 18082.5
18082.5 + 115 = 18197.5
18197.5 + 115 = 18312.5
18312.5 + 115 = 18427.5
18427.5 + 115 = 18542.5
18542.5 + 115 = 18657.5
18657.5 + 115 = 18772.5
18772.5 + 115 = 18887.5
18887.5 + 115 = 19002.5
19002.5 + 115 = 19117.5
19117.5 + 115 = 19232.5
19232.5 + 115 = 19347.5
19347.5 + 115 = 19462.5
19462.5 + 115 = 19577.5
19577.5 + 115 = 19692.5
19692.5 + 115 = 19807.5
19807.5 + 115 = 19922.5
19922.5 + 115 = 20037.5
20037.5 + 115 = 20152.5
20152.5 + 115 = 20267.5
20267.5 + 115 = 20382.5
20382.5 + 115 = 20497.5
20497.5 + 115 = 20612.5
20612.5 + 115 = 20727.5
20727.5 + 115 = 20842.5
20842.5 + 115 = 20957.5
20957.5 + 115 = 21072.5
21072.5 + 115 = 21187.5
21187.5 + 115 = 21302.5
21302.5 + 115 = 21417.5
21417.5 + 115 = 21532.5
21532.5 + 115 = 21647.5
21647.5 + 115 = 21762.5
21762.5 + 115 = 21877.5
21877.5 + 115 = 21992.5
21992.5 + 115 = 22107.5
22107.5 + 115 = 22222.5
22222.5 + 115 = 22337.5
22337.5 + 115 = 22452.5
22452.5 + 115 = 22567.5
22567.5 + 115 = 22682.5
22682.5 + 115 = 22797.5
22797.5 + 115 = 22912.5
22912.5 + 115 = 23027.5
23027.5 + 115 = 23142.5
23142.5 + 115 = 23257.5
23257.5 + 115 = 23372.5
23372.5 + 115 = 23487.5
23487.5 + 115 = 23602.5
23602.5 + 115 = 23717.5
23717.5 + 115 = 23832.5
23832.5 + 115 = 23947.5
23947.5 + 115 = 24062.5
24062.5 + 115 = 24177.5
24177.5 + 115 = 24292.5
24292.5 + 115 = 24407.5
24407.5 + 115 = 24522.5
24522.5 + 115 = 24637.5
24637.5 + 115 = 24752.5
24752.5 + 115 = 24867.5
24867.5 + 115 = 24982.5
24982.5 + 115 = 25097.5
25097.5 + 115 = 25212.5
25212.5 + 115 = 25327.5
25327.5 + 115 = 25442.5
25442.5 + 115 = 25557.5
25557.5 + 115 = 25672.5
25672.5 + 115 = 25787.5
25787.5 + 115 = 25902.5
25902.5 + 115 = 26017.5
26017.5 + 115 = 26132.5
26132.5 + 115 = 26247.5
26247.5 + 115 = 26362.5
26362.5 + 115 = 26477.5
26477.5 + 115 = 26592.5
26592.5 + 115 = 26707.5
26707.5 + 115 = 26822.5
26822.5 + 115 = 26937.5
26937.5 + 115 = 27052.5
27052.5 + 115 = 27167.5
27167.5 + 115 = 27282.5
27282.5 + 115 = 27397.5
27397.5 + 115 = 27512.5
27512.5 + 115 = 27627.5
27627.5 + 115 = 27742.5
27742.5 + 115 = 27857.5
27857.5 + 115 = 27972.5
27972.5 + 115 = 28087.5
28087.5 + 115 = 28202.5
28202.5 + 115 = 28317.5
28317.5 + 115 = 28432.5
28432.5 + 115 = 28547.5
28547.5 + 115 = 28662.5
28662.5 + 115 = 28777.5
28777.5 + 115 = 28892.5
28892.5 + 115 = 29007.5
29007.5 + 115 = 29122.5
29122.5 + 115 = 29237.5
29237.5 + 115 = 29352.5
29352.5 + 115 = 29467.5
29467.5 + 115 = 29582.5
29582.5 + 115 = 29697.5
29697.5 + 115 = 29812.5
29812.5 + 115 = 29927.5
29927.5 + 115 = 30042.5
30042.5 + 115 = 30157.5
30157.5 + 115 = 30272.5
30272.5 + 115 = 30387.5
30387.5 + 115 = 30502.5
30502.5 + 115 = 30617.5
30617.5 + 115 = 30732.5
30732.5 + 115 = 30847.5
30847.5 + 115 = 30962.5
30962.5 + 115 = 31077.5
31077.5 + 115 = 31192.5
31192.5 + 115 = 31307.5
31307.5 + 115 = 31422.5
31422.5 + 115 = 31537.5
31537.5 + 115 = 31652.5
31652.5 + 115 = 31767.5
31767.5 + 115 = 31882.5
31882.5 + 115 = 31997.5
31997.5 + 115 = 32112.5
32112.5 + 115 = 32227.5
32227.5 + 115 = 32342.5
32342.5 + 115 = 32457.5
32457.5 + 115 = 32572.5
32572.5 + 115 = 32687.5
32687.5 + 115 = 32802.5
32802.5 + 115 = 32917.5
32917.5 + 115 = 33032.5
33032.5 + 115 = 33147.5
33147.5 + 115 = 33262.5
33262.5 + 115 = 33377.5
33377.5 + 115 = 33492.5
33492.5 + 115 = 33607.5
33607.5 + 115 = 33722.5
33722.5 + 115 = 33837.5
33837.5 + 115 = 33952.5
33952.5 + 115 = 34067.5
34067.5 + 115 = 34182.5
34182.5 + 115 = 34297.5
34297.5 + 115 = 34412.5
34412.5 + 115 = 34527.5
34527.5 + 115 = 34642.5
34642.5 + 115 = 34757.5
34757.5 + 115 = 34872.5
34872.5 + 115 = 34987.5
34987.5 + 115 = 35102.5
35102.5 + 115 = 35217.5
35217.5 + 115 = 35332.5
35332.5 + 115 = 35447.5
35447.5 + 115 = 35562.5
35562.5 + 115 = 35677.5
35677.5 + 115 = 35792.5
35792.5 + 115 = 35907.5
35907.5 + 115 = 36022.5
36022.5 + 115 = 36137.5
36137.5 + 115 = 36252.5
36252.5 + 115 = 36367.5
36367.5 + 115 = 36482.5
36482.5 + 115 = 36597.5
36597.5 + 115 = 36712.5
36712.5 + 115 = 36827.5
36827.5 + 115 = 36942.5
36942.5 + 115 = 37057.5
37057.5 + 115 = 37172.5
37172.5 + 115 = 37287.5
37287.5 + 115 = 37402.5
37402.5 + 115 = 37517.5
37517.5 + 115 = 37632.5
37632.5 + 115 = 37747.5
37747.5 + 115 = 37862.5
37862.5 + 115 = 37977.5
37977.5 + 115 = 38092.5
38092.5 + 115 = 38207.5
38207.5 + 115 = 38322.5
38322.5 + 115 = 38437.5
38437.5 + 115 = 38552.5
38552.5 + 115 = 38667.5
38667.5 + 115 = 38782.5
38782.5 + 115 = 38897.5
38897.5 + 115 = 39012.5
39012.5 + 115 = 39127.5
39127.5 + 115 = 39242.5
39242.5 + 115 = 39357.5
39357.5 + 115 = 39472.5
39472.5 + 115 = 39587.5
39587.5 + 115 = 39702.5
39702.5 + 115 = 39817.5
39817.5 + 115 = 39932.5
39932.5 + 115 = 40047.5
40047.5 + 115 = 40162.5
40162.5 + 115 = 40277.5
40277.5 + 115 = 40392.5
40392.5 + 115 = 40507.5
40507.5 + 115 = 40622.5
40622.5 + 115 = 40737.5
40737.5 + 115 = 40852.5
40852.5 + 115 = 40967.5
40967.5 + 115 = 41082.5
41082.5 + 115 = 41197.5
41197.5 + 115 = 41312.5
41312.5 + 115 = 41427.5
41427.5 + 115 = 41542.5
41542.5 + 115 = 41657.5
41657.5 + 115 = 41772.5
41772.5 + 115 = 41887.5
41887.5 + 115 = 42002.5
42002.5 + 115 = 42117.5
42117.5 + 115 = 42232.5
42232.5 + 115 = 42347.5
42347.5 + 115 = 42462.5
42462.5 + 115 = 42577.5
42577.5 + 115 = 42692.5
42692.5 + 115 = 42807.5
42807.5 + 115 = 42922.5
42922.5 + 115 = 43037.5
43037.5 + 115 = 43152.5
43152.5 + 115 = 43267.5
43267.5 + 115 = 43382.5
43382.5 + 115 = 43497.5
43497.5 + 115 = 43612.5
43612.5 + 115 = 43727.5
43727.5 + 115 = 43842.5
43842.5 + 115 = 43957.5
43957.5 + 115 = 44072.5
44072.5 + 115 = 44187.5
44187.5 + 115 = 44302.5
44302.5 + 115 = 44417.5
44417.5 + 115 = 44532.5
44532.5 + 115 = 44647.5
44647.5 + 115 = 44762.5
44762.5 + 115 = 44877.5
44877.5 + 115 = 44992.5
44992.5 + 115 = 45107.5
45107.5 + 115 = 45222.5
45222.5 + 115 = 45337.5
45337.5 + 115 = 45452.5
45452.5 + 115 = 45567.5
45567.5 + 115 = 45682.5
45682.5 + 115 = 45797.5
45797.5 + 115 = 45912.5
45912.5 + 115 = 46027.5
46027.5 + 115 = 46142.5
46142.5 + 115 = 46257.5
46257.5 + 115 = 46372.5
46372.5 + 115 = 46487.5
46487.5 + 115 = 46602.5
46602.5 + 115 = 46717.5
46717.5 + 115 = 46832.5
46832.5 + 115 = 46947.5
46947.5 + 115 = 47062.5
47062.5 + 115 = 47177.5
47177.5 + 115 = 47292.5
47292.5 + 115 = 47407.5
47407.5 + 115 = 47522.5
47522.5 + 115 = 47637.5
47637.5 + 115 = 47752.5
47752.5 + 115 = 47867.5
47867.5 + 115 = 47982.5
47982.5 + 115 = 48097.5
48097.5 + 115 = 48212.5
48212.5 + 115 = 48327.5
48327.5 + 115 = 48442.5
48442.5 + 115 = 48557.5
48557.5 + 115 = 48672.5
48672.5 + 115 = 48787.5
48787.5 + 115 = 48902.5
48902.5 + 115 = 49017.5
49017.5 + 115 = 49132.5
49132.5 + 115 = 49247.5
49247.5 + 115 = 49362.5
49362.5 + 115 = 49477.5
49477.5 + 115 = 49592.5
49592.5 + 115 = 49707.5
49707.5 + 115 = 49822.5
49822.5 + 115 = 49937.5
49937.5 + 115 = 50052.5
50052.5 + 115 = 50167.5
50167.5 + 115 = 50282.5
50282.5 + 115 = 50397.5
50397.5 + 115 = 50512.5
50512.5 + 115 = 50627.5
50627.5 + 115 = 50742.5
50742.5 + 115 = 50857.5
50857.5 + 115 = 50972.5
50972.5 + 115 = 51087.5
51087.5 + 115 = 51202.5
51202.5 + 115 = 51317.5
51317.5 + 115 = 51432.5
51432.5 + 115 = 51547.5
51547.5 + 115 = 51662.5
51662.5 + 115 = 51777.5
51777.5 + 115 = 51892.5
51892.5 + 115 = 52007.5
52007.5 + 115 = 52122.5
52122.5 + 115 = 52237.5
52237.5 + 115 = 52352.5
52352.5 + 115 = 52467.5
52467.5 + 115 = 52582.5
52582.5 + 115 = 52697.5
52697.5 + 115 = 52812.5
52812.5 + 115 = 52927.5
52927.5 + 115 = 53042.5
53042.5 + 115 = 53157.5
53157.5 + 115 = 53272.5
53272.5 + 115 = 53387.5
53387.5 + 115 = 53502.5
53502.5 + 115 = 53617.5
53617.5 + 115 = 53732.5
53732.5 + 115 = 53847.5
53847.5 + 115 = 53962.5
53962.5 + 115 = 54077.5
54077.5 + 115 = 54192.5
54192.5 + 115 = 54307.5
54307.5 + 115 = 54422.5
54422.5 + 115 = 54537.5
54537.5 + 115 = 54652.5
54652.5 + 115 = 54767.5
54767.5 + 115 = 54882.5
54882.5 + 115 = 54997.5
54997.5 + 115 = 55112.5
55112.5 + 115 = 55227.5
55227.5 + 115 = 55342.5
55342.5 + 115 = 55457.5
55457.5 + 115 = 55572.5
55572.5 + 115 = 55687.5
55687.5 + 115 = 55802.5
55802.5 + 115 = 55917.5
55917.5 + 115 = 56032.5
56032.5 + 115 = 56147.5
56147.5 + 115 = 56262.5
56262.5 + 115 = 56377.5
56377.5 + 115 = 56492.5
56492.5 + 115 = 56607.5
56607.5 + 115 = 56722.5
56722.5 + 115 = 56837.5
56837.5 + 115 = 56952.5
56952.5 + 115 = 57067.5
57067.5 + 115 = 57182.

HOWARD COUNTY HEALTH DEPARTMENT

JOYCE M. BOYD, M.D., M.P.H.
COUNTY HEALTH OFFICER



Bureau of Environmental Health
3525 Ellicott Mills Drive
Ellicott City, Maryland 21043

Director - 461-9956
Water & Sewerage, Permits - 461-9933
Community Environmental Health - 461-9944
Technical Services - 461-9955

July 29, 1987

T & R Plumbing & Heating
11974 Scaggsville Road
Fulton, Maryland 20759

Attention: Tim Rollman

RE: Septic Permit #P39529
Lot 2 Haines Property
17756 Hardy Road
James Dewitt - Owner

Dear Mr. Rollman:

On July 23, 1987 I inspected an incorrectly executed septic system installed by you on the above referenced property. The trenches were installed running downhill rather than along the contour as specified.

Additional trench capacity was added to correct for the loss of effective area that resulted from the incorrect installation. The correction may not be so simple on another installation.

If you do not understand the specifications when you received a septic permit, you are encouraged to request clarification. I would also advise you to request initial inspection very early in the installation process so that problems can be corrected before rather than after they develop. A continued pattern of incorrect installations may well result in a demand for inspections prior to excavation in order to eliminate the chance for problems.

If you have any questions relative to this matter, please call me at 461-9933.

Respectfully,

A handwritten signature in cursive script that reads "Craig Williams".

Craig Williams, Director
Water and Sewerage Program

CW:JR

3/19/85
1:30 P.M.

APPLICATION

A 34977
P _____

SEWAGE DISPOSAL TESTING

STATE OF MARYLAND - DEPARTMENT OF HEALTH AND MENTAL HYGIENE

HOWARD COUNTY HEALTH DEPARTMENT
ENVIRONMENTAL HEALTH SERVICES
P. O. BOX 476 ELLICOTT CITY, MARYLAND 21043
TELEPHONE: 992-2330

DISTRICT _____
DATE 2/13/85

TO: THE COUNTY HEALTH OFFICER
ELLICOTT CITY, MARYLAND

I, HEREBY, APPLY FOR THE NECESSARY TEST IN ORDER TO CONSTRUCT (OR RECONSTRUCT) A SEWAGE DISPOSAL SYSTEM.

PROPERTY OWNER ~~KENNETH L. HAINES~~ James Dewitt

ADDRESS 757 LONG CORNER RD. MT. AIRY, MD. 21771 PHONE 831-5555

PROPERTY LOCATION:

SUBDIVISION HAINES PROPERTY LOT NO. 2 LOT 20N
FINAL PLAN

ROAD AND DESCRIPTION CORNER LONG CORNER RD. & HARDY RD.

17756 HARDY RD.

SIZE OF LOT 3.398 TYPE BLDG. HOME 3
(NUMBER OF BEDROOMS)

THE SYSTEM INSTALLED UNDER THIS APPLICATION IS ACCEPTABLE ONLY UNTIL PUBLIC FACILITIES BECOME AVAILABLE. I FULLY UNDERSTAND THE FEE CONNECTED WITH THE FILING OF THIS PERC TEST APPLICATION IS NON-REFUNDABLE UNDER ANY CIRCUMSTANCES. I ALSO AGREE TO COMPLY WITH ALL M.O.S.H.A. REQUIREMENTS IN TESTING THIS LOT.

X Kenneth L. Haines
(SIGNATURE OF APPLICANT)

APPROVED BY _____ FOR _____ DATE _____

REJECTED BY _____ FOR _____ DATE _____

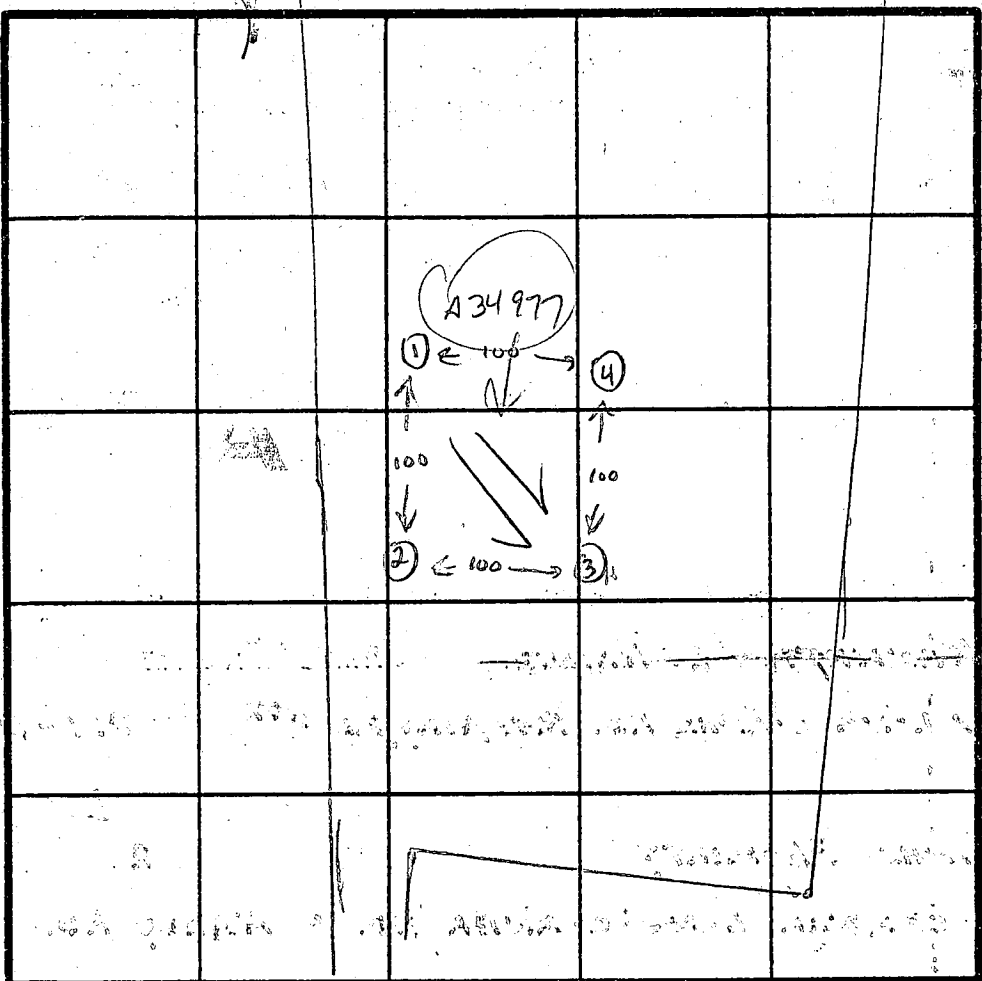
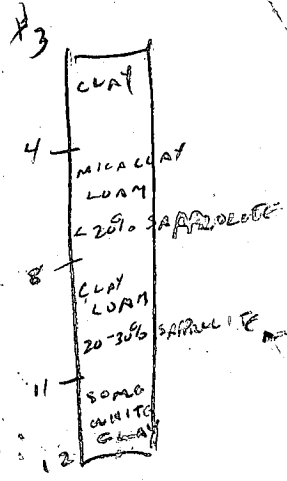
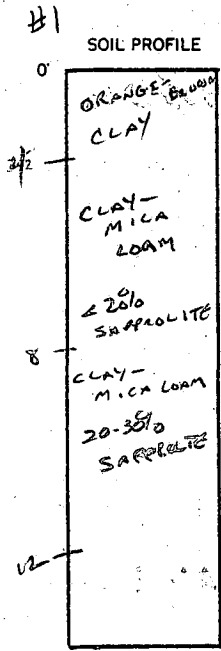
HOLD PENDING FURTHER TESTS _____ DATE _____

REASONS FOR REJECTION OR HOLDING _____

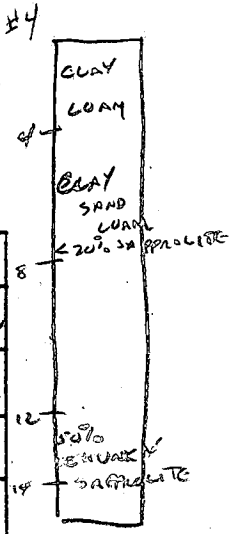
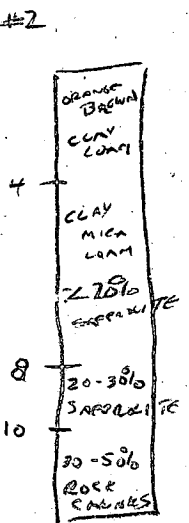
BLDG. PERMIT SIGNED
AND RETURNED 5-14-87

8/2/87
BP # 11901

THIS IS NOT A PERMIT



INDICATE NORTH: NAME ADJOINING ROADWAY AS BASE LINE.



DATE	TEST NO.	DEPTH	PRE-WET		TEST - 1" DROP		TIME
			START	STOP	START	STOP	
3-17-85	1 HIGH	4	11:25	11:30	11:30	slow	-
		8	11:25	11:31	11:31	11:40	9 min ✓
		12	TOP SHELF	VISUALLY	OK AT 5 1/2"		✓
	2 2nd HIGH	4	11:20	11:45	11:45	slow	-
		8	11:20	11:28	11:28	11:30	6 ✓
		12	TOP SHELF	VISUALLY	OK AT 5"		✓
	3 LOW	4	11:35	11:45	11:45	12:03	18 ✓
		8	11:35	11:39	11:39	11:45	6 ✓
		12	SAPROLITE				
	4	4	11:57	11:57	11:57	12:06	9 ✓
		8	11:57	11:57	11:57	12:03	6 ✓
		14	TOO MUCH	SAPROLITE	BELOW 12'		

REMARKS _____

TYPE OF SOIL _____

TESTED BY *Carlton*

ALSO PRESENT RICH (ARNOLD) HAINES

APPLICATION

A 35164
A ~~34978~~

SEWAGE DISPOSAL TESTING

STATE OF MARYLAND - DEPARTMENT OF HEALTH AND MENTAL HYGIENE

P _____

HOWARD COUNTY HEALTH DEPARTMENT
ENVIRONMENTAL HEALTH SERVICES
P. O. BOX 476 ELLICOTT CITY, MARYLAND 21043
TELEPHONE: 992-2330

DISTRICT _____

DATE 2/13/85

*This perc area not separated
into its own lot - exist on
lot # 2.*

TO: THE COUNTY HEALTH OFFICER
ELLICOTT CITY, MARYLAND

I, HEREBY, APPLY FOR THE NECESSARY TEST IN ORDER TO CONSTRUCT (OR RECONSTRUCT) A SEWAGE DISPOSAL SYSTEM.

PROPERTY OWNER KENNETH L. HAINES

ADDRESS 759 LONG CORNER RD. MT. AIRY, MD. 21771 PHONE 831-5555

PROPERTY LOCATION: NEW LOT # 1

SUBDIVISION HAINES PROPERTY LOT NO. ~~1~~ ON FINAL PLAT

ROAD AND DESCRIPTION CORNER OF LONG CORNER RD. & HARDY RD.

SIZE OF LOT 3.341 TYPE BLDG. HOME 3
(NUMBER OF BEDROOMS)

THE SYSTEM INSTALLED UNDER THIS APPLICATION IS ACCEPTABLE ONLY UNTIL PUBLIC FACILITIES BECOME AVAILABLE. I FULLY UNDERSTAND THE FEE CONNECTED WITH THE FILING OF THIS PERC TEST APPLICATION IS NON-REFUNDABLE UNDER ANY CIRCUMSTANCES. I ALSO AGREE TO COMPLY

WITH ALL M.O.S.H.A. REQUIREMENTS IN TESTING THIS LOT. Kenneth L. Haines
(SIGNATURE OF APPLICANT)

APPROVED BY _____ FOR _____ DATE _____

REJECTED BY _____ FOR _____ DATE _____

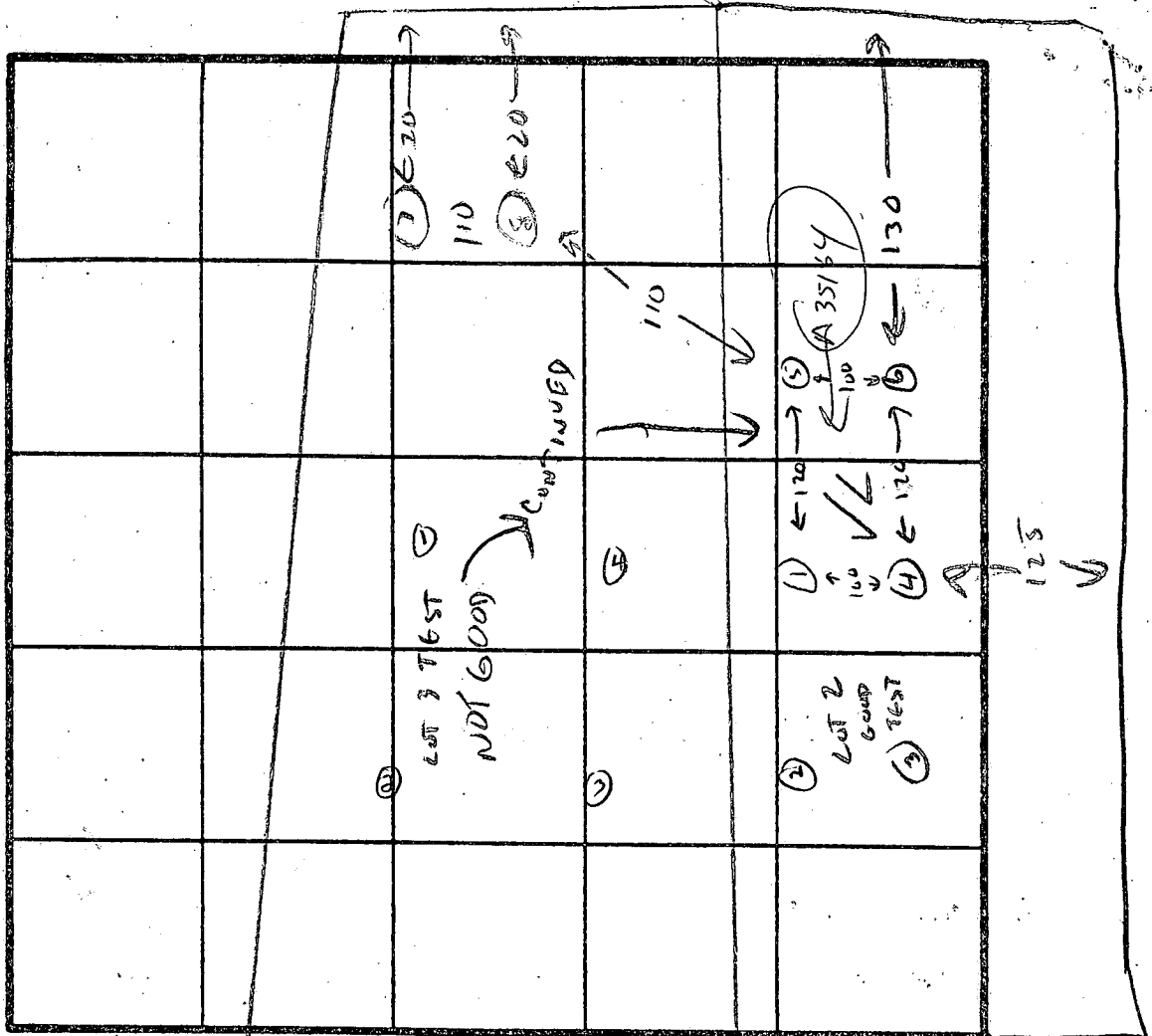
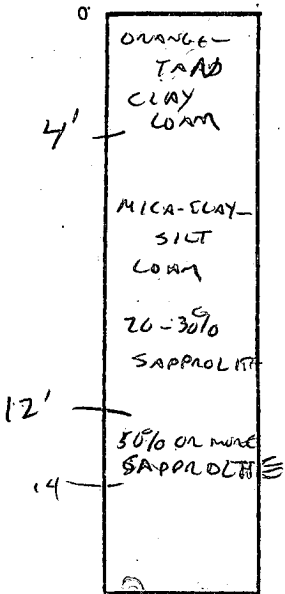
HOLD PENDING FURTHER TESTS _____ DATE _____

REASONS FOR REJECTION OR HOLDING SUBDIVISION PLAT REQUIRED. 6/10/85 CW

THIS IS NOT A PERMIT

ALL HOLES

SOIL PROFILE



INDICATE NORTH - NAME ADJOINING ROADWAY AS BASE LINE.

DATE	TEST NO.	DEPTH	PRE-WET		TEST - 1" DROP		TIME
			START	STOP	START	STOP	
3-19-85	17 OK FROM						
	4 LOT 2						
	5	6 10 12	4:00 4:15	4:06 OK ST-10; MIN SOL	4:06 4:17	4:07	11 MIN
	6	6 10 14	4:17 4:17	4:20 4:20	4:20 4:24	4:26 4:32	6 MIN 11 MIN
	7	12	TOO SLOWLY BELOW 12'				
	8	8	CLAY TO 7' THEN LOAM, HARD AT 10'				
			TOO ROUGH 3-8'				

REMARKS _____

TYPE OF SOIL _____

TESTED BY *C. C. ...*

ALSO PRESENT *RICH (SRODLO, HAWES)*

EHP-12-1079

B 1 7680

SEQUENCE NO. (OEP USE ONLY)

STATE OF MARYLAND PERMIT TO DRILL WELL

please print or type

OEP PERMIT NUMBER

MD-81-2059

fill in this form completely

Date Received

Empty date grid

OWNER INFORMATION

NEILITT JAMES

15310 LAURELTON DR

LAUREL MD 20709

B 3

LOCATION OF WELL

HOWARD

HAINES PROPERTY

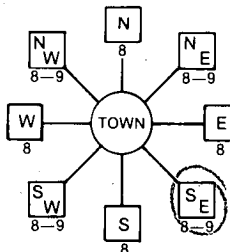
SECTION 44 46 LOT 2 48 50

MT AIRY

MILES FROM TOWN (enter 0 if in town) 3 MI

B 4

DIRECTION OF WELL FROM TOWN (CIRCLE BOX)



Hardy Rd

ON WHICH SIDE OF ROAD (CIRCLE APPROPRIATE BOX)



1200

ENTER FT or MI FT

B 2

WELL INFORMATION

APPROX. PUMPING RATE (GAL. PER MIN.) 5

AVERAGE DAILY QUANTITY NEEDED (GAL. PER DAY) 500

USE FOR WATER (CIRCLE APPROPRIATE BOX)

- Home (single or double household unit only)
Farming (livestock watering & agricultural irrigation)
Industrial, commercial, state and federal gov. other (requires appropriation permit)
Public or private water company (requires appropriation permit and state health department approval)
Test, observation, monitoring (may require appropriation permit)

NOT TO BE FILLED IN BY DRILLER HEALTH DEPARTMENT APPROVAL

Howard A34977
COUNTY NAME COUNTY NO.
OEP SIGNATURE STATE HEALTH INSERT S
DATE ISSUED CO SIGNATURE EXP. DATE
NORTH GRID EAST GRID

APPROXIMATE DEPTH OF WELL 200 FEET

APPROXIMATE DIAMETER OF WELL 6 INCH

METHOD OF DRILLING (circle one)

- Bored (or Augered) JETTED Jetted & DRIVEN
AIR-ROTary AIR-PERcussion ROTARY (Hydraulic Rotary)
CABLE REVERSE-ROTary DRive-POINT
other

REPLACEMENT OR DEEPEMED WELLS (CIRCLE APPROPRIATE BOX)

- This well will not replace an existing well
This well will replace a well that will be abandoned and sealed
This well will replace a well that will be used as a standby
This well will deepen an existing well

PERMIT NUMBER OF WELL TO BE REPLACED OR DEEPEMED (IF AVAILABLE)

Not to be filled in by driller (OEP USE ONLY)

APPROP. PERMIT NUMBER GAP

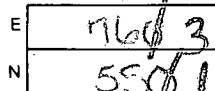
FORCE INITIALS PERMIT No. MD-81-2059

SPECIAL CONDITIONS

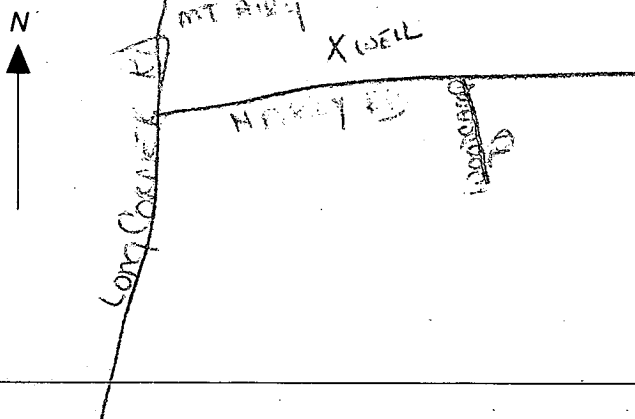
SHOW MAJOR FEATURES OF BOX & LOCATE WELL WITH AN X

SOURCES OF DRILLING WATER
1. WELL
2.
3.

WRITE THE BOX NUMBER FROM THE MAP HERE



DRAW A SKETCH BELOW SHOWING LOCATION OF WELL IN RELATION TO NEARBY TOWNS AND ROADS AND GIVE DISTANCE FROM WELL TO NEAREST ROAD JUNCTION



C1 2409

SEQUENCE NO. (OEP USE ONLY)

STATE OF MARYLAND WELL COMPLETION REPORT

THIS REPORT MUST BE SUBMITTED WITHIN 45 DAYS AFTER WELL IS COMPLETED.

(THIS NUMBER IS TO BE PUNCHED IN COLS. 3-6 ON ALL CARDS)

COUNTY NUMBER A 34977

DATE Received

DATE WELL COMPLETED 051780

Depth of Well 200 (TO NEAREST FOOT)

PERMIT NO. FROM "PERMIT TO DRILL WELL" 10-81-2059

OWNER De Witt JAMES STREET OR RFD WILBY ROAD / LONG CORNER TOWN MT. AIRY SUBDIVISION HAINES PROPERTY SECTION LOT 2

WELL LOG Not required for driven wells STATE THE KIND OF FORMATIONS PENETRATED, THEIR COLOR, DEPTH, THICKNESS AND IF WATER BEARING

Table with columns: DESCRIPTION (Use additional sheets if needed), FEET (FROM, TO), Check if water bearing. Rows include TOP Soil, Clay, Shaley, brown slate, blue slate, brown slate, blue slate, brown slate, blue slate, brown slate, blue slate.

GROUTING RECORD WELL HAS BEEN GROUTED (Y) TYPE OF GROUTING MATERIAL CEMENT (CM) BENTONITE CLAY (BC) NO. OF BAGS 10 NO. OF POUNDS 1000 GALLONS OF WATER 50 DEPTH OF GROUT SEAL (to nearest foot) from 0 ft. to 39 ft.

CASING RECORD casing types insert appropriate code below (ST) STEEL (CO) CONCRETE (PL) PLASTIC (OT) OTHER

MAIN CASING Nominal diameter top (main) casing (nearest inch) Total depth of main casing (nearest foot) (ST) (C) (42)

OTHER CASING (if used) diameter inch depth (feet) from to

SCREEN RECORD screen type or open hole insert appropriate code below (ST) STEEL (BR) BRASS (PL) PLASTIC (HO) OPEN HOLE (OT) OTHER

DEPTH (nearest ft.) H0 40 200

CIRCLE APPROPRIATE LETTER A WELL WAS ABANDONED AND SEALED WHEN THIS WELL WAS COMPLETED ELECTRIC LOG OBTAINED TEST WELL CONVERTED TO PRODUCTION WELL

I HEREBY CERTIFY THAT THIS WELL HAS BEEN CONSTRUCTED IN ACCORDANCE WITH COMAR 10.17.13 "WELL CONSTRUCTION" AND IN CONFORMANCE WITH ALL CONDITIONS STATED IN THE ABOVE CAPTIONED PERMIT, AND THAT THE INFORMATION PRESENTED HEREIN IS ACCURATE AND COMPLETE TO THE BEST OF MY KNOWLEDGE.

DRILLERS IDENT. NO. 40 DRILLERS SIGNATURE (MUST MATCH SIGNATURE ON APPLICATION) SITE SUPERVISOR (Sign. of driller or journeyman responsible for sitework if different from permittee)

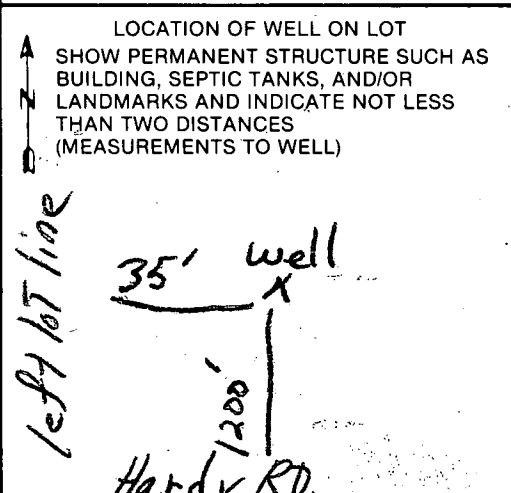
SLOT SIZE 1 2 3 DIAMETER OF SCREEN (NEAREST INCH) 6

GRAVEL PACK IF WELL DRILLED WAS FLOWING WELL INSERT F IN BOX 68

OEP USE ONLY (NOT TO BE FILLED IN BY DRILLER) (E.R.O.S.) WQ TELESCOPE CASING LOG INDICATOR OTHER DATA

PUMPING TEST HOURS PUMPED (nearest hour) 3 PUMPING RATE (gal. per min. to nearest gal.) 17 METHOD USED TO MEASURE PUMPING RATE Bucket WATER LEVEL (distance from land surface) BEFORE PUMPING 67 WHEN PUMPING 57 TYPE OF PUMP USED (for test) (A) air (P) piston (T) turbine (C) centrifugal (R) rotary (O) other (describe below) (J) jet (S) submersible

PUMP INSTALLED DRILLER WILL INSTALL PUMP YES NO IF DRILLER INSTALLS PUMP, THIS SECTION MUST BE COMPLETED FOR ALL WELLS EXCEPT HOME USE TYPE OF PUMP INSTALLED PLACE (A,C,J,P,R,S,T,O) IN BOX-SEE ABOVE: CAPACITY: GALLONS PER MINUTE (to nearest gallon) PUMP HORSE POWER PUMP COLUMN LENGTH (nearest ft.) CASING HEIGHT (circle appropriate box and enter casing height) LAND SURFACE (nearest foot)



NO
4

APPLICATION FOR PITLESS ADAPTER, WELL PUMP AND PRESSURE TANK INSTALLATION

SEPTIC
WELL

Howard County Health Department
Bureau of Environmental Health
3525-H Ellicott Mills Drive
Court House Square
Ellicott City, Md. 21043
461-9933

New Installation
Replacement

Receipt # 39530
Date 6-30-87

Name of Installer TIMOTHY J. ROULMAN

Telephone 725-2392

License number 7079
Certified Well Pump Installer

Well Driller Registered Plumber

Name of Property Owner JIM DEWITT

Telephone

Subdivision WOODCAMP FARM Lot # 2 Well tag #

Site Address 17756 HARDY RD.
ELICOTT CITY

Pump

1. Type
 - a. Deep well jet
 - b. Shallow well jet
 - c. Submersible

Motor

1. Horsepower
2. RPM
3. Voltage
 - a. 110
 - b. 220

Pitless Adapter

1. Make HARVARD
2. Model #
3. Depth 4'

2. Make JACOZZI

3. Model #

4. Capacity 10 GPM

5. Pump exceeds well capacity Yes No

6. If Yes, is low pressure cutoff switch installed? Yes No

7. What methods are used to protect the pump and electrical wiring from vibrations? Torque arrestors Cable guards Other

Tank

1. Capacity 42 gal. equiv.
2. Pressure relief valve? yes

Piping

1. Type CRESTON
2. Size 1"
3. NSF and/or BOCA Code approved yes
4. Depth of supply line 4'

Well data

1. Depth ft.
2. Yield GPM
3. Static water level ft.
4. Will water supply be disinfected by installer? yes

I understand that it is my responsibility to notify the Howard County Health Department when the installation is ready for inspection (otherwise this permit is null and void).

All information given above is true to the best of my knowledge.

Signature of Applicant: [Signature]

Date: 6-30-87

Note: A sticker indicating approval/status of the installation will be placed on the well casing at the time of the inspection.

LOT 1 - MUMMAU PROP.

PLAT C.M.P. No 3862

R.M. HOUGH

643/255

PROP. 2 STORY HSE.-

F.F. El. = 782.9 ✓

Bsmt. El. = 774.6 ✓

Inv. Out = 773.6 ✓ ⊕ BSMT

PROP. SEPTIC TANK-

Ex. El. = 776.7 ✓

Inv. In = 773.4 ✓

Inv. Out = 773.1 ✓

PROP. DISTRIBUTION BOX-

Ex. El. = 775.8 ✓

Inv. In = 772.6 ✓

PROP. TRENCHES-

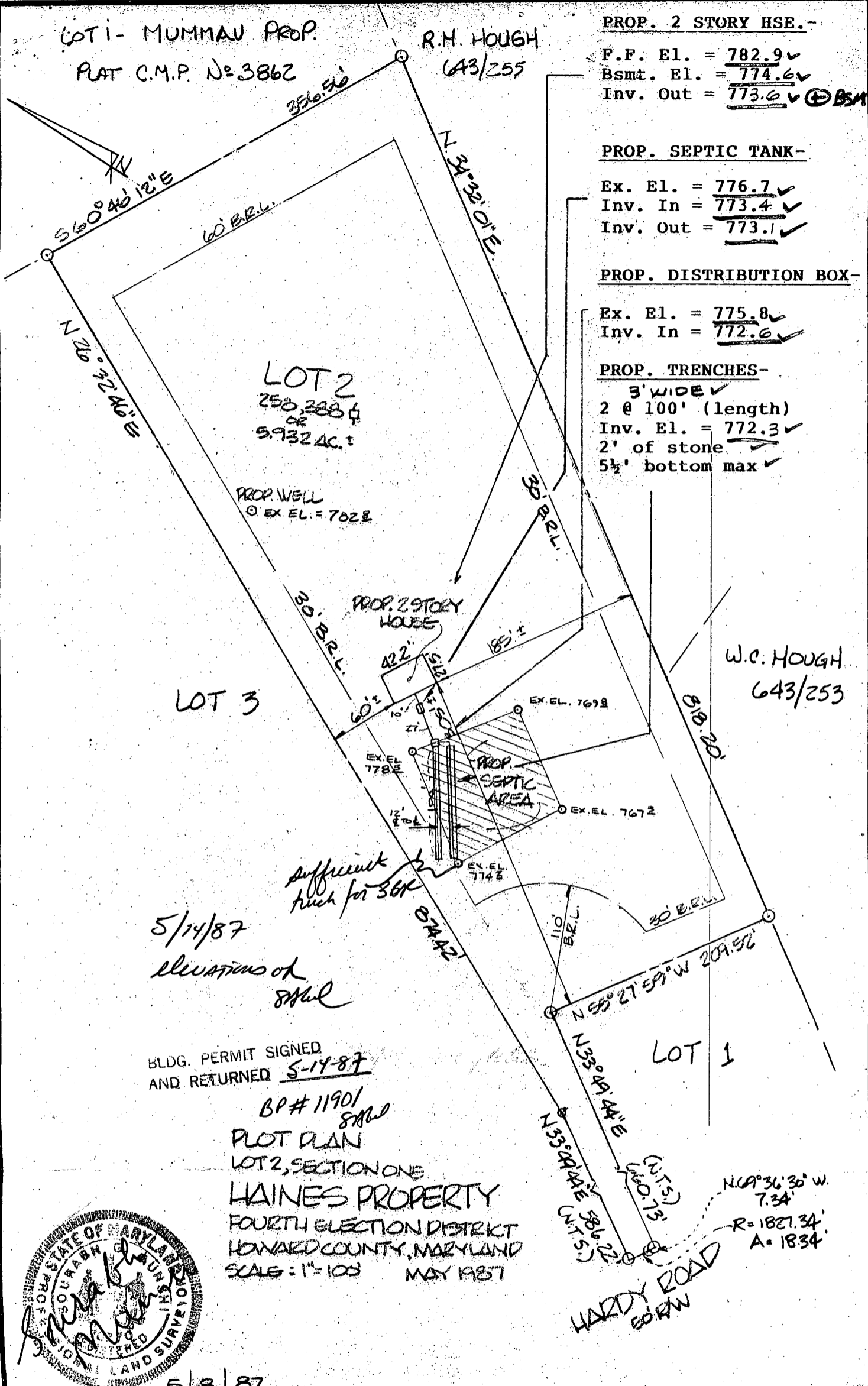
3' WIDE ✓

2 @ 100' (length)

Inv. El. = 772.3 ✓

2' of stone ✓

5 1/2' bottom max ✓



W.C. HOUGH
643/253

LOT 3

LOT 1

LOT 2
253,388 ±
OR
5.932 AC. ±

PROP. WELL
EX EL. = 702.2

PROP. 2 STORY HOUSE

PROP. SEPTIC AREA

5/14/87

elevations of
8742

BLDG. PERMIT SIGNED
AND RETURNED 5-14-87

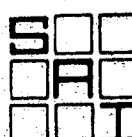
BP # 11901
8742

PLOT PLAN
LOT 2, SECTION ONE
HAINES PROPERTY
FOURTH ELECTION DISTRICT
HOWARD COUNTY, MARYLAND
SCALE: 1" = 100' MAY 1987



5 8 87

I CERTIFY THIS PLAT TO BE CORRECT; IT IS THE RESULT OF AN ACTUAL FIELD SURVEY, BASED ON DATA FOUND AMONG THE LAND RECORDS OF HOWARD COUNTY, MARYLAND, AS REFERENCED HEREON.



SHELADIA Associates, Inc.
CONSULTING ENGINEERS
310 A South Main Street, Mt. Airy MD. 21771
(301) 829-2800

REFERENCE	JOB NO.
PLAT No 8056	87-1488

N7584

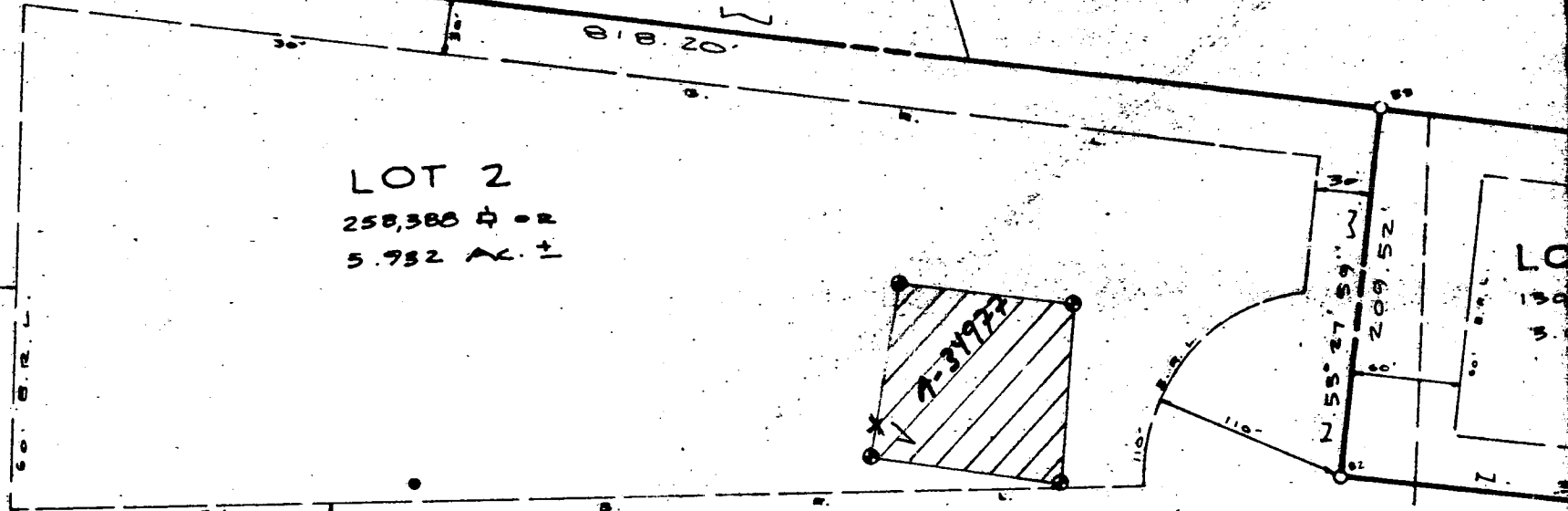
45 IRON PIPES RD
 S 34° 22' 01" W
 162.84'

R. H. HOUGH 0643/255



LOT 1 MUMMAU FROM
 PLAT. C.M.P. NO 3862

S 60° 46' 12" E
 203.87'



LOT 2
 258,388 ± sq. ft.
 5.932 AC. ±

LOT 3
 248,913 ± sq. ft.
 5.715 AC. ±

REF. LINE
 S 34° 15' 53" E
 88.83'

A. D. WATKINS
 394/53

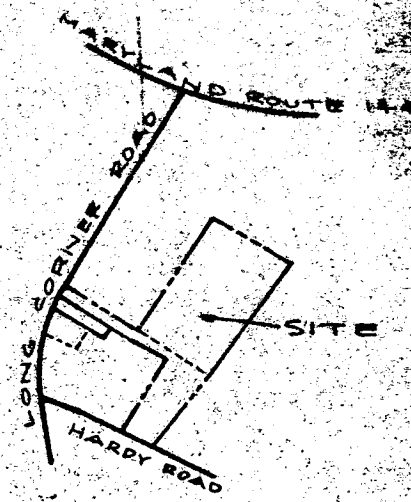
T. E. SMITH
 0652/280

R. H. ANDERSON
 404/333

R. G. BLACKFORD
 0636/22

J. R. B. HOWARD

H. R.



LO...
 IN...
 COMMUNITY MAP SCALE 1" = 1200'

ES

ITS SHOWN HEREON COMPLIES WITH THE MINIMUM OWNERSHIP WIDTH REQUIREMENTS AS REQUIRED BY THE MARYLAND STATE DEPT. OF HEALTH ZONING AND HYGIENE REGULATIONS.

THIS AREA DESIGNATES A SEWAGE EASEMENT OF 10,000 SQUARE FEET AS REQUIRED BY THE MARYLAND STATE DEPARTMENT OF HEALTH AND MENTAL HYGIENE FOR INDIVIDUAL SEWAGE DISPOSAL IMPROVEMENTS OF ANY NATURE IN THIS AREA IS RESTRICTED UNTIL PUBLIC SEWERAGE IS AVAILABLE. THESE EASEMENTS SHALL BECOME NULL AND VOID UPON CONNECTION TO THE SEWERAGE SYSTEM. THE HEALTH OFFICER SHALL BE THE AUTHORITY TO ORDER THE SEWERAGE IMPROVEMENTS FOR PRIVATE SEWAGE DISPOSAL OR SEWERAGE EASEMENT AS NECESSARY. THIS MAP REPRESENTS BUILDING FOOTPRINTS AND SETBACK LINES.

55240A.875	76340.176	83	551656.704	763084.037
552161.107	762780.247	85	552330.729	763547.864
552287.382	762837.153	89	552690.790	763121.878
551151.576	762722.673	134	552504.842	763256.707
551205.723	762528.008	90	552604.395	763058.797
551239.162	762536.719			
551175.048	762687.678			
551152.641	762737.168			
551871.222	762552.930			
551736.113	762824.869			
551244.967	762495.717			
551228.737	762481.490			
551235.638	762519.561			
551226.604	762543.601			

TOTAL TABULATION THIS SUBMISSION
 TOTAL NUMBER OF LOTS TO BE RECORDED 3
 TOTAL AREA OF LOTS (LOTS 1 THRU 3) 638,011 \pm OR 14.647 AC
 TOTAL AREA ROADWAY TO BE RECORDED INCLUDING WIDENING STRIPS 6459 \pm OR 0.148 AC
 TOTAL AREA THIS SUBMISSION 644,470 \pm OR 14.795 AC

APPROVED FOR PRIVATE WATER AND PRIVATE SEWERAGE SYSTEMS
 12-20-81 *Joan Zylu*
 DATE COUNTY HEALTH OFFICER

APPROVED HOWARD COUNTY OFFICE OF PLANNING AND ZONING
 -13-86 *Thomas G. Harris*
 DATE DIRECTOR

APPROVED FOR STORM DRAINAGE SYSTEMS AND PUBLIC ROADS
 -6-85 *Mary F. Neuman*
 DATE DIRECTOR

OWN
 WE, KENNETH L. HAINES, THE PROPERTY OWNER OF THIS PLAT OF SUBDIVISION APPROVAL OF THE LINES AND GRADES AND SUCCESSIONS AND MUNICIPAL UTILITIES ROADS AND STREETS EASEMENTS AND DEDICATIONS FOR ROADS AND UTILITIES AND FOR GOOD AND GRANT THE RIGHT THE FREE SIMPLE OR ROADS AND TRAIL AND OPEN SPACES REQUIRE DEDICATION, REPAIR AND MAINTENANCE OF OR SIMILAR ERECTED ON OR RIGHT OF WAY.
 WITNESS OUR HANDS
 1/11/85 *Thomas G. Harris*
 DATE KENN
 1/11/85 *Thomas G. Harris*
 DATE THE
 1/11/85 *Thomas G. Harris*
 DATE WIT

(OR IRON BAR) SET
 MONUMENT SET

FLAT 6580
 86 ALONG THE LAND RECORDS OF
 HOWARD COUNTY, MD

CURVE DATA					
FROM POINT 79 TO POINT 77					
RADIUS	ARC	Δ	TAN	CHD. BRG.	DIST.
1827.34'	2560'	0°48'10"	12.80'	N. 68°37'55" W.	25.60'
FROM POINT 64 TO POINT 79					
RADIUS	ARC	Δ	TAN	CHD. BRG.	DIST.
1827.34'	18.34'	0°34'30"	9.17'	N. 69°19'15" W.	18.34'
FROM POINT 58 TO POINT 78					
RADIUS	ARC	Δ	TAN	CHD. BRG.	DIST.
1852.34'	49.88'	1°32'35"	24.94'	N. 68°50'15" W.	49.88'

MINOR SUBDIVISION PLAT
 SIGNED LOTS 1-3 SECTION ONE FILE COPY
HAINES PROPERTY
 TAX MAP 1, PARCEL 21 & TAX MAP 6 PARCEL 42
 FOURTH ELECTION DISTRICT
 HOWARD COUNTY, MARYLAND
 SCALE 1" = 100'
 SHELDIA Associates, Inc. CONSULTING ENGINEERS
 7655 WOODVILLE ROAD
 MT. AIRY, MD. 21771 (301) 821-2850
 DATE JANUARY 10, 1985

- LOCATED AND SHOWN AS 0
- (6) 0 INDICATES PROPOSED WELL
 - (7) SUBJECT PROPERTY ZONED "R" PER 0-2-85 COMPREHENSIVE ZONING PLAN.
 - (8) COORDINATES ARE IN MARYLAND STATE GRID AS PROJECTED BY HOWARD COUNTY GEODETIC CONTROL STATION 3827001 E AND 3827002
 - (9) FOR FLAG OR PIPESTEM LOTS, REFUSE COLLECTION, SNOW REMOVAL AND ROAD MAINTENANCE ARE PROVIDED TO THE JUNCTION OF THE FLAG OR PIPESTEM AND THE ROAD RIGHT-OF-WAY LINE ONLY AND NOT INTO THE FLAG OR PIPESTEM LOT DRIVEWAY
 - (10) 0 REPRESENTS IRON BAR OR IRON PIPE SET (UNLESS OTHERWISE NOTED)
 - (11) REFERENCE TO VP 85-66