

**COMPLETE THIS FORM WHEN DROPPING OFF ANY
CORRESPONDENCE AND/OR PLANS TO THE HOWARD COUNTY
DEPARTMENT OF INSPECTIONS, LICENSES AND PERMITS COUNTER:**

Date: 9-21-21

To: ~~DHP~~ Health Department
(Person's Name and Division)

From: Eugeny Chernousov (443) 224-3124
(Your Name, Company Name and Telephone Number)

Subject: Project name _____
Project site address 12027 Open Run Rd, Ellicott City 21042
Permit # B 21003125 SDP # _____
Other information pertinent to this project _____

Please check the attachments below that you are submitting with this transmittal:

- Letter of response to address plan review comment letter
- Revised plans and/or revised details: When submitting for a complete re-review, **duplicate sets shall be submitted.**
- Letter Summarizing Changes
- Energy conservation calculations
- Copies of revised floorplans (be specific). No bedroom, office instead
 - Health Department Request
 - DPZ/ DED Request
 - Applicant's Request
- Two sets of single family dwelling model plans to be placed on permanent file: Model name and/or # _____
- Other _____

Contact Person Information: (Required)

Eugene Chernousov
Please Print Name

Telephone No: 443-224-3124

E-Mail Address: contact_us@
@glorenville.com

PLEASE ASSURE ALL DOCUMENTS AND/OR REVISIONS ARE APPROPRIATELY SIGNED AND SEALED, IF NECESSARY, BY A LICENSED ARCHITECT OR ENGINEER. PLEASE BE ADVISED THAT INSUFFICIENT INFORMATION MAY RESULT IN THE DELAY OF REVIEW BY THE PLANS EXAMINER. THE DEPARTMENT OF INSPECTIONS, LICENSES AND PERMITS WILL CONTACT YOU IF THERE IS A PROBLEM. IN ADDITION, ONCE THE BUILDING PERMIT IS APPROVED BY THE PLAN REVIEW DIVISION AND ALL OTHER REQUIRED SIGNATORY AGENCIES, AND THE BUILDING PERMIT IS READY FOR ISSUANCE, THE PERMIT DIVISION WILL NOTIFY THE APPROPRIATE CONTACT PERSON FOR PERMIT PICK UP. ALL PERMIT STATUS INQUIRIES SHALL BE DIRECTED TO THE PERMIT DIVISION AT 410-313-2455. CODE RELATED QUESTIONS AND PLAN REVIEW INQUIRIES SHALL BE DIRECTED TO THE PLAN REVIEW DIVISION AT 410-313-2436. PLEASE ALLOW A MINIMUM OF FIVE (5) WORKING DAYS FOR ANY PLAN SUBMITTALS TO BE REVIEWED. THANK YOU.

Received by AKH PER HEALTH
DEPT REQUEST

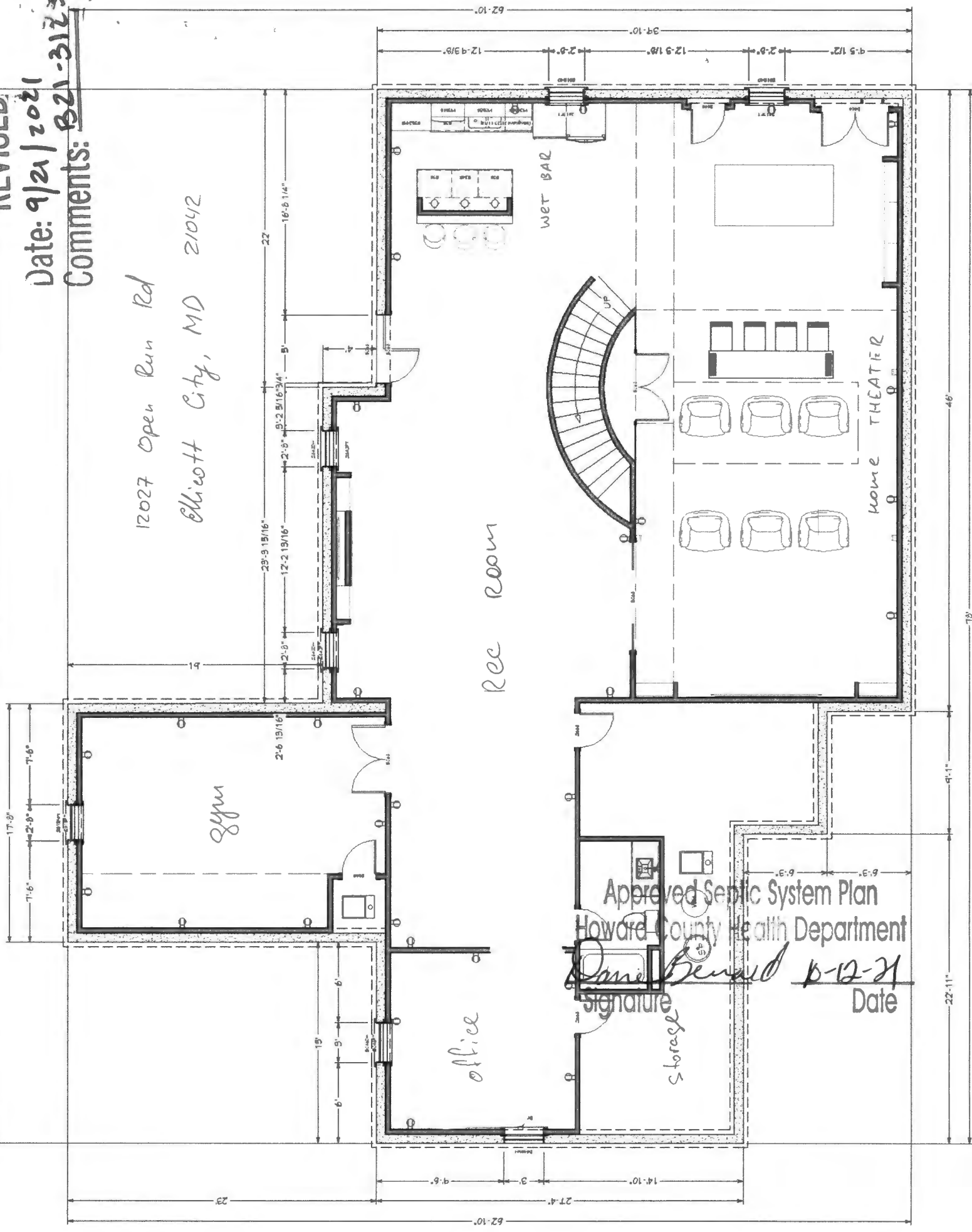
30-9023-10-10-21

REVISED

Date: 9/21/2021

Comments: B21-3125

12027 Open Run Rd
Elliott City, MD 21042



Approved Septic System Plan
 Howard County Health Department
Danielle Bernard
 Signature Date 8-12-21

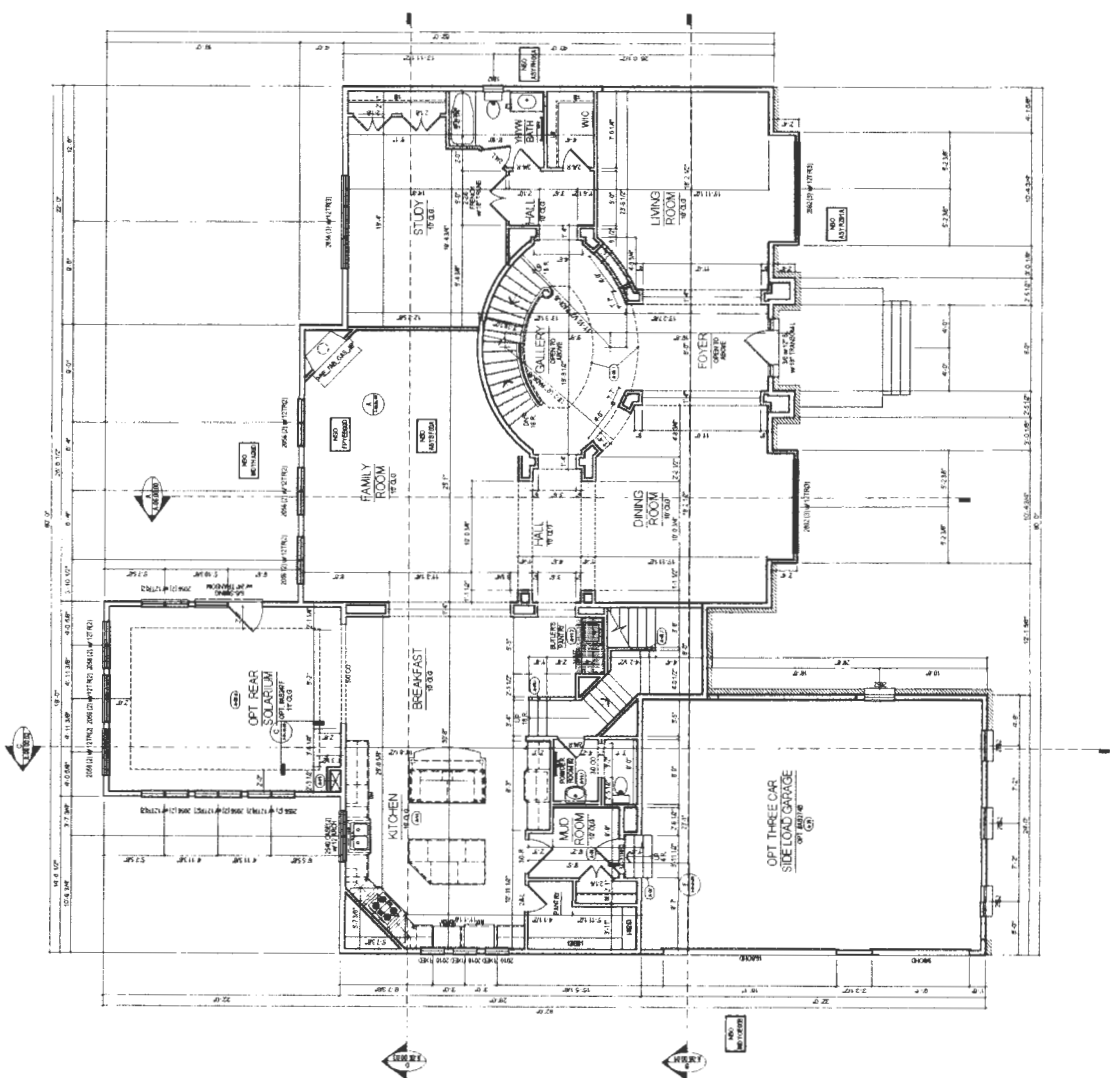


4433 ROCKLEBUSH
RTE 111 BOX 100
MAYLAND, MD 21771
(301) 923-4800

09-604
01/6/2011
FIRST FLOOR PLAN

A
03.00.00

- REVISIONS**
- 1.00 CORRECTED WINDOW SIZES
 - 1.01 CORRECTED WINDOW SIZES
 - 1.02 CORRECTED WINDOW SIZES
 - 1.03 CORRECTED WINDOW SIZES
 - 1.04 CORRECTED WINDOW SIZES
 - 1.05 CORRECTED WINDOW SIZES
 - 1.06 CORRECTED WINDOW SIZES
 - 1.07 CORRECTED WINDOW SIZES
 - 1.08 CORRECTED WINDOW SIZES
 - 1.09 CORRECTED WINDOW SIZES
 - 1.10 CORRECTED WINDOW SIZES
 - 1.11 CORRECTED WINDOW SIZES
 - 1.12 CORRECTED WINDOW SIZES
 - 1.13 CORRECTED WINDOW SIZES
 - 1.14 CORRECTED WINDOW SIZES
 - 1.15 CORRECTED WINDOW SIZES
 - 1.16 CORRECTED WINDOW SIZES
 - 1.17 CORRECTED WINDOW SIZES
 - 1.18 CORRECTED WINDOW SIZES
 - 1.19 CORRECTED WINDOW SIZES
 - 1.20 CORRECTED WINDOW SIZES
 - 1.21 CORRECTED WINDOW SIZES
 - 1.22 CORRECTED WINDOW SIZES
 - 1.23 CORRECTED WINDOW SIZES
 - 1.24 CORRECTED WINDOW SIZES
 - 1.25 CORRECTED WINDOW SIZES
 - 1.26 CORRECTED WINDOW SIZES
 - 1.27 CORRECTED WINDOW SIZES
 - 1.28 CORRECTED WINDOW SIZES
 - 1.29 CORRECTED WINDOW SIZES
 - 1.30 CORRECTED WINDOW SIZES
 - 1.31 CORRECTED WINDOW SIZES
 - 1.32 CORRECTED WINDOW SIZES
 - 1.33 CORRECTED WINDOW SIZES
 - 1.34 CORRECTED WINDOW SIZES
 - 1.35 CORRECTED WINDOW SIZES
 - 1.36 CORRECTED WINDOW SIZES
 - 1.37 CORRECTED WINDOW SIZES
 - 1.38 CORRECTED WINDOW SIZES
 - 1.39 CORRECTED WINDOW SIZES
 - 1.40 CORRECTED WINDOW SIZES
 - 1.41 CORRECTED WINDOW SIZES
 - 1.42 CORRECTED WINDOW SIZES
 - 1.43 CORRECTED WINDOW SIZES
 - 1.44 CORRECTED WINDOW SIZES
 - 1.45 CORRECTED WINDOW SIZES
 - 1.46 CORRECTED WINDOW SIZES
 - 1.47 CORRECTED WINDOW SIZES
 - 1.48 CORRECTED WINDOW SIZES
 - 1.49 CORRECTED WINDOW SIZES
 - 1.50 CORRECTED WINDOW SIZES
 - 1.51 CORRECTED WINDOW SIZES
 - 1.52 CORRECTED WINDOW SIZES
 - 1.53 CORRECTED WINDOW SIZES
 - 1.54 CORRECTED WINDOW SIZES
 - 1.55 CORRECTED WINDOW SIZES
 - 1.56 CORRECTED WINDOW SIZES
 - 1.57 CORRECTED WINDOW SIZES
 - 1.58 CORRECTED WINDOW SIZES
 - 1.59 CORRECTED WINDOW SIZES
 - 1.60 CORRECTED WINDOW SIZES
 - 1.61 CORRECTED WINDOW SIZES
 - 1.62 CORRECTED WINDOW SIZES
 - 1.63 CORRECTED WINDOW SIZES
 - 1.64 CORRECTED WINDOW SIZES
 - 1.65 CORRECTED WINDOW SIZES
 - 1.66 CORRECTED WINDOW SIZES
 - 1.67 CORRECTED WINDOW SIZES
 - 1.68 CORRECTED WINDOW SIZES
 - 1.69 CORRECTED WINDOW SIZES
 - 1.70 CORRECTED WINDOW SIZES
 - 1.71 CORRECTED WINDOW SIZES
 - 1.72 CORRECTED WINDOW SIZES
 - 1.73 CORRECTED WINDOW SIZES
 - 1.74 CORRECTED WINDOW SIZES
 - 1.75 CORRECTED WINDOW SIZES
 - 1.76 CORRECTED WINDOW SIZES
 - 1.77 CORRECTED WINDOW SIZES
 - 1.78 CORRECTED WINDOW SIZES
 - 1.79 CORRECTED WINDOW SIZES
 - 1.80 CORRECTED WINDOW SIZES
 - 1.81 CORRECTED WINDOW SIZES
 - 1.82 CORRECTED WINDOW SIZES
 - 1.83 CORRECTED WINDOW SIZES
 - 1.84 CORRECTED WINDOW SIZES
 - 1.85 CORRECTED WINDOW SIZES
 - 1.86 CORRECTED WINDOW SIZES
 - 1.87 CORRECTED WINDOW SIZES
 - 1.88 CORRECTED WINDOW SIZES
 - 1.89 CORRECTED WINDOW SIZES
 - 1.90 CORRECTED WINDOW SIZES
 - 1.91 CORRECTED WINDOW SIZES
 - 1.92 CORRECTED WINDOW SIZES
 - 1.93 CORRECTED WINDOW SIZES
 - 1.94 CORRECTED WINDOW SIZES
 - 1.95 CORRECTED WINDOW SIZES
 - 1.96 CORRECTED WINDOW SIZES
 - 1.97 CORRECTED WINDOW SIZES
 - 1.98 CORRECTED WINDOW SIZES
 - 1.99 CORRECTED WINDOW SIZES
 - 2.00 CORRECTED WINDOW SIZES



FIRST FLOOR PLAN SCALE 1/4" = 1'-0"

BENCHMARK
ENGINEERING, INC.

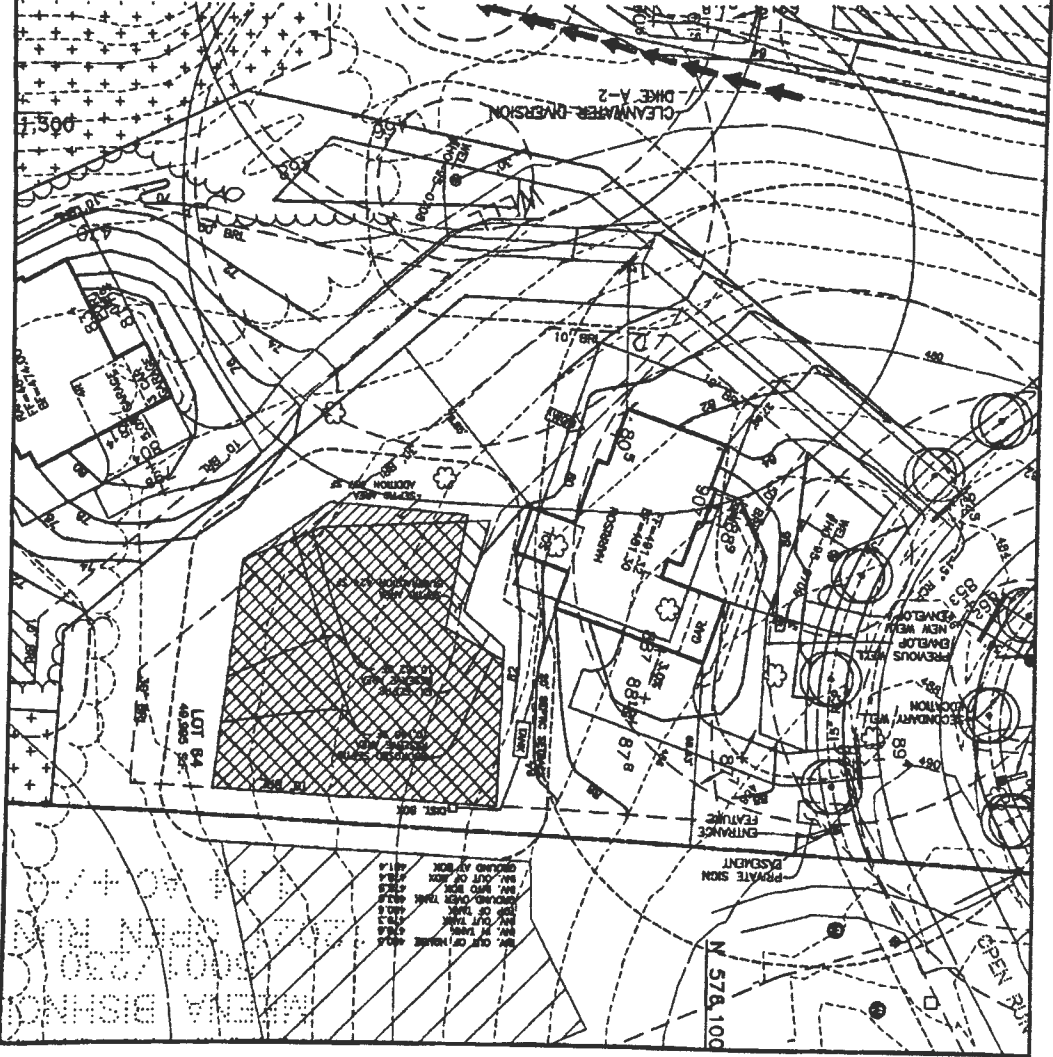
1950 RIVERWOOD HSS3144011 PHASE 1.dwg, Lot 64, 12/17/2010 3:48:19 PM

THIRD ELECTION DISTRICT
 HOWARD COUNTY, MARYLAND
 SCALE: 1" = 50' DATE: 12/1/10

MODEL: HARRISON
 ELEVATION: 08HR94
 WALKOUT: YES
 REVERSED: NO
 OPTIONS: REAR SOLARIUM,
 3 CAR GAR,
 ORDERED BY: ANDREW CAMPBELL
 SITED BY: JOHN CARNEY
 ADDITIONAL REMARKS: WELL AND SEPTIC REVISION

ITEM	ADDITIONAL CLEANING	HOUSE OFF PAD	RAISED HOUSE	LOWERED HOUSE	DRIVEWAY % CHANGE	CURB CUT CHANGE	HOUSE WITHIN BRL	REMOVED FRONT/SIDE/REAR/DIMENSIONS	ASKED FOR AS-BUILT TOPD ON ADJACENT LOTS	(EXAMPLE: IF LOTS ARE SODDEN, ETC.)	NOTE ANY GRADES UNDER 4%	DO IMPERVIOUS AREA MEET REQUIREMENT
RESPONSE	NO	YES	YES	NO	NO	NO	NO	NO	NO	NO	NO	NO
REMARKS	FROM INTERIM PLAN	SIDES	FOR SEPTIC	OPEN SECTION	PER NEW HOUSE	SWALES						

RIVERWOOD
LOT 64



NO. OF CHANGES
 NO. OF REVISIONS
 NO. OF COMMENTS
 NO. OF NOTES
 NO. OF DIMENSIONS
 NO. OF DISTANCES
 NO. OF AREAS
 NO. OF PERIMETERS
 NO. OF VOLUMES
 NO. OF SURFACES
 NO. OF CURVES
 NO. OF POINTS
 NO. OF OBJECTS

Service Trans

D Bernardo 013

PAE M