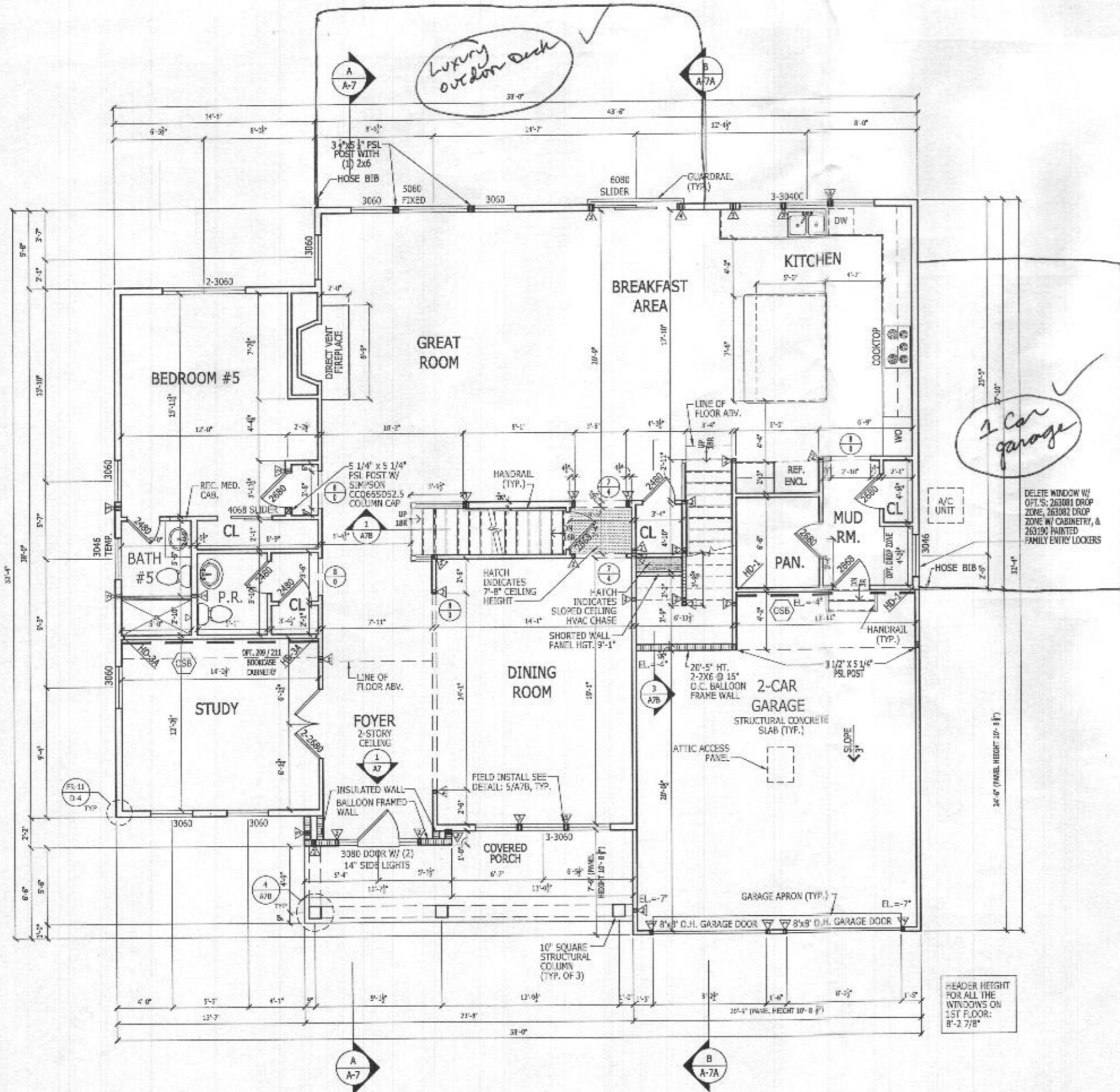






ALL IDEAS, DESIGNS, ARRANGEMENTS AND PLANS INDICATED OR REPRESENTED BY THIS DRAWING ARE OWNED BY AND THE PROPERTY OF TOLL BROTHERS, INC. AND ARE COPYRIGHTED. THEY WERE CREATED, EVOLVED AND DEVELOPED FOR USE ON, AND IN CONNECTION WITH THE SPECIFIED PROJECT. NONE OF SUCH IDEAS, DESIGNS, ARRANGEMENTS OR PLANS SHALL BE USED BY OR DISCLOSED TO ANY PERSON, FIRM OR CORPORATION FOR ANY PURPOSE WHATSOEVER WITHOUT THE WRITTEN PERMISSION OF TOLL BROTHERS, INC. WRITTEN DIMENSIONS ON THESE DRAWINGS SHALL HAVE PRECEDENCE OVER SCALED DIMENSIONS CONTRACTORS SHALL VERIFY, AND BE RESPONSIBLE FOR ALL DIMENSIONS AND CONDITIONS ON THE JOB AND TOLL BROTHERS OFFICE MUST BE NOTIFIED OF ANY VARIATIONS FROM THE DIMENSIONS AND CONDITIONS SHOWN BY THESE DRAWINGS.



**LATERAL BRACING**

THIS HOUSE HAS BEEN ENGINEERED TO RESIST ASCE 7-10 WIND LOAD USING AN ENGINEERED METHOD FOR 115 MPH BASIC WIND SPEED.

FOR OSB + DRYWALL ATTACHMENT SEE A4L1 DETAIL SHEET

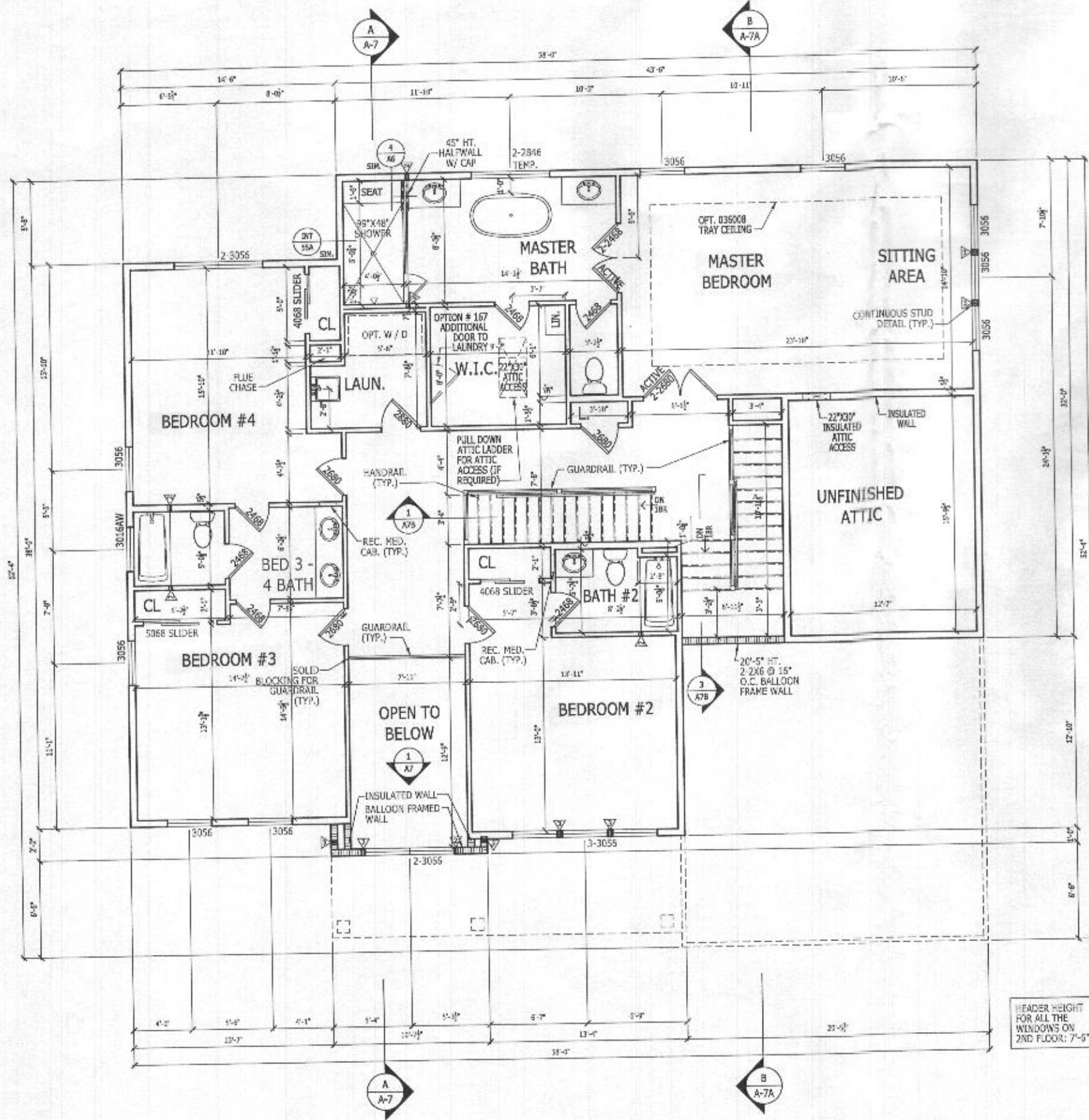
**FIRST FLOOR PLAN**  
SCALE: 1/4" = 1'-0"

10' CEILING HEIGHT  
CRAFTSMAN

RIGHT HAND SET

SHEET DESCRIPTION <b>FIRST FLOOR PLAN</b>		SHEET REVISION INFO	
SERIAL NUMBER		TOLLARCHITECTURE	
DRAWN BY - K.SIDHUPURA		PHILADELPHIA - ORLANDO DALLAS - LOS ANGELES - SEATTLE	
CHECKED BY - TOLLARCH		250 Gibraltar Road, Hershram, PA 19044 P 215-293-5300   F 215-293-5314 A Division of Toll Brothers	
SHEET DATE - 03.13.2019		SET REVISION INFO 202347	
PRODUCT LINE		MODEL/PROJECT NAME <b>DUMONT</b>	
ELEVATION NAME <b>CRAFTSMAN</b>		ELEVATION NAME <b>CRAFTSMAN</b>	
SHEET NUMBER <b>A2_31</b>		SHEET NUMBER 1018.0	

ALL IDEAS, DESIGNS, ARRANGEMENTS AND PLANS INDICATED OR REPRESENTED BY THIS DRAWING ARE OWNED BY AND THE PROPERTY OF TOLL BROTHERS, INC. AND ARE COPYRIGHTED. THEY WERE CREATED, REVISED AND DEVELOPED FOR USE ON, AND IN CONNECTION WITH THE SPECIFIED PROJECT. NONE OF SUCH IDEAS, DESIGNS, ARRANGEMENTS OR PLANS SHALL BE USED BY OR DISCLOSED TO ANY PERSON, FIRM OR CORPORATION FOR ANY PURPOSE WHATSOEVER WITHOUT THE WRITTEN PERMISSION OF TOLL BROTHERS, INC. WRITTEN PERMISSIONS ON THESE DRAWINGS SHALL HAVE PRECEDENCE OVER SCALED DIMENSIONS CONTRACTORS SHALL VERIFY, AND BE RESPONSIBLE FOR ALL DIMENSIONS AND CONDITIONS ON THE JOB AND TOLL BROTHERS OFFICE MUST BE NOTIFIED OF ANY VARIATIONS FROM THE DIMENSIONS AND CONDITIONS SHOWN BY THESE DRAWINGS.



**SECOND FLOOR PLAN**  
SCALE: 1/4" = 1'-0"

9' CEILING HEIGHT  
CRAFTSMAN

HEADER HEIGHT  
FOR ALL THE  
WINDOWS ON  
2ND FLOOR: 7'-0"

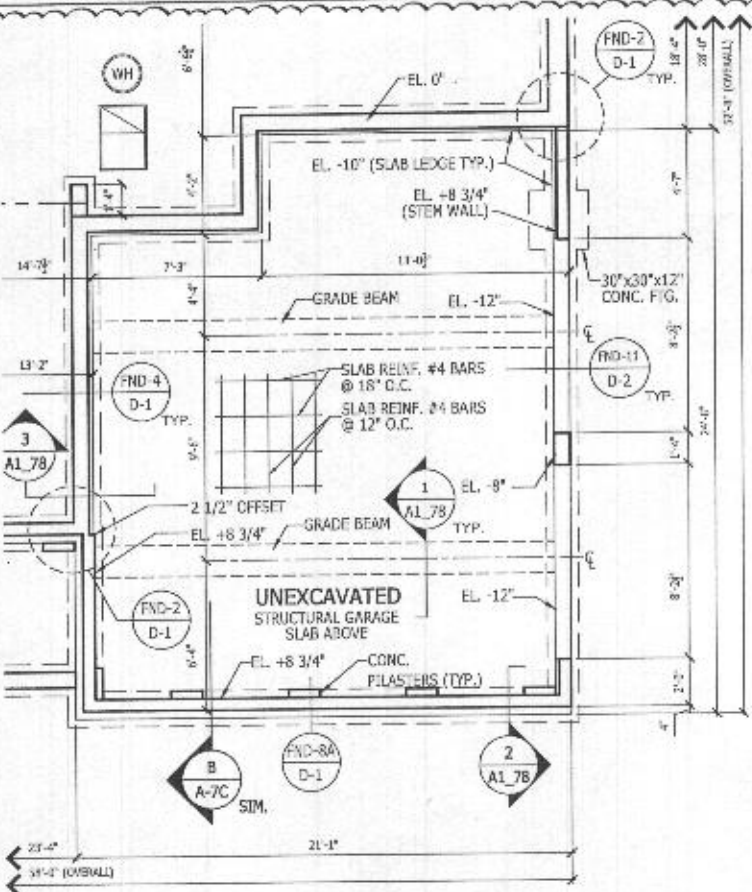
**LATERAL BRACING**  
THIS HOUSE HAS BEEN ENGINEERED TO RESIST ASCE 7-10 WIND LOAD USING AN ENGINEERED METHOD FOR 115 MPH BASIC WIND SPEED.  
FOR OSB + DRYWALL ATTACHMENT SEE A4L1 DETAIL SHEET

**RIGHT HAND SET**

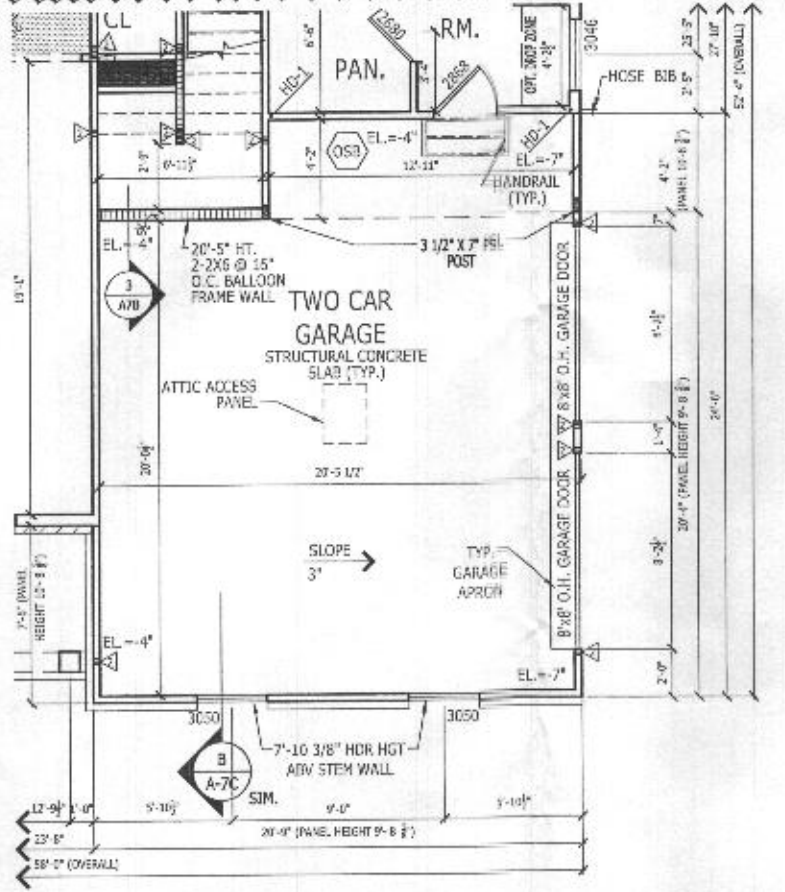
<b>TOLLARCHITECTURE</b>	
PHILADELPHIA · ORLANDO DALLAS · LOS ANGELES · SEATTLE 250 Gibraltar Road, Horsham, PA 19044 P 215-293-5300   F 215-293-5314 A Division of Toll Brothers	
<b>SHEET REVISION INFO</b>	<b>SET REVISION INFO</b>
PRODUCT LINE	SET REVISION INFO
MODEL/PROJECT NAME	202347
<b>DUMONT</b>	
ELEVATION NAME	
<b>CRAFTSMAN</b>	
<b>SECOND FLOOR PLAN</b>	
<b>A3_31</b>	
SHEET NUMBER	1018.0

© TB Proprietary Corp.

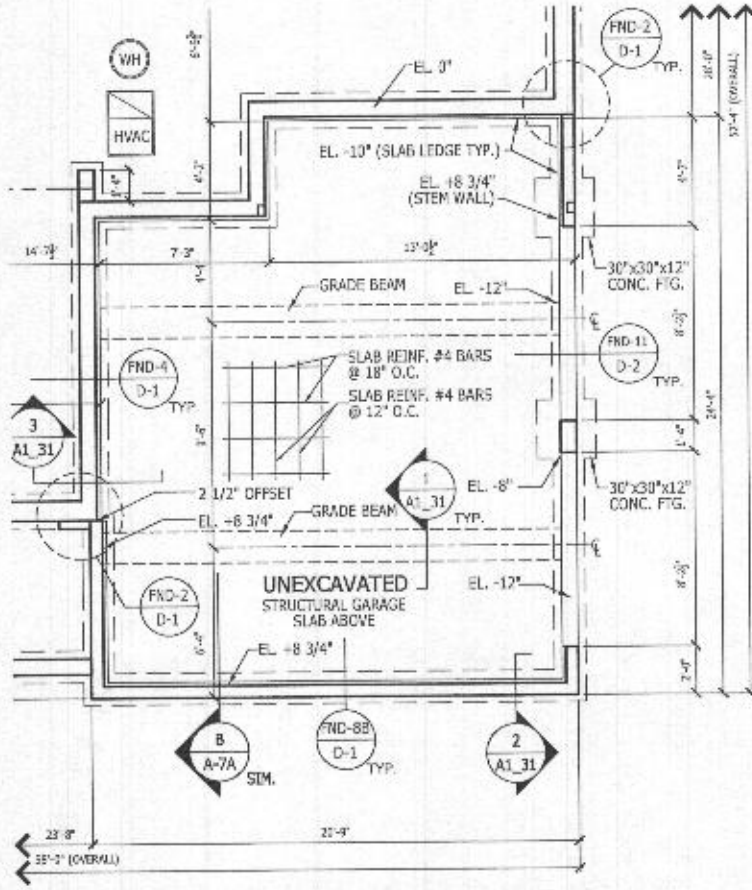
ALL IDEAS, DESIGNS, ARRANGEMENTS AND PLANS INDICATED OR REPRESENTED BY THIS DRAWING ARE OWNED BY AND THE PROPERTY OF TOLL BROTHERS, INC. AND ARE COPYRIGHTED. THEY WERE CREATED, EVOLVED AND DEVELOPED FOR USE ON, AND IN CONNECTION WITH THE SPECIFIED PROJECT. NONE OF SUCH IDEAS, DESIGNS, ARRANGEMENTS OR PLANS SHALL BE USED BY OR DISCLOSED TO ANY PERSON, FIRM OR CORPORATION FOR ANY PURPOSE WHATSOEVER WITHOUT THE WRITTEN PERMISSION OF TOLL BROTHERS, INC. WRITTEN PERMISSIONS ON THESE DRAWINGS SHALL HAVE PRECEDENCE OVER SCALED DIMENSIONS AND CONDITIONS SHOWN ON THE JOB AND TOLL BROTHERS OFFICE MUST BE NOTIFIED OF ANY VARIATIONS FROM THE DIMENSIONS AND CONDITIONS SHOWN BY THESE DRAWINGS.



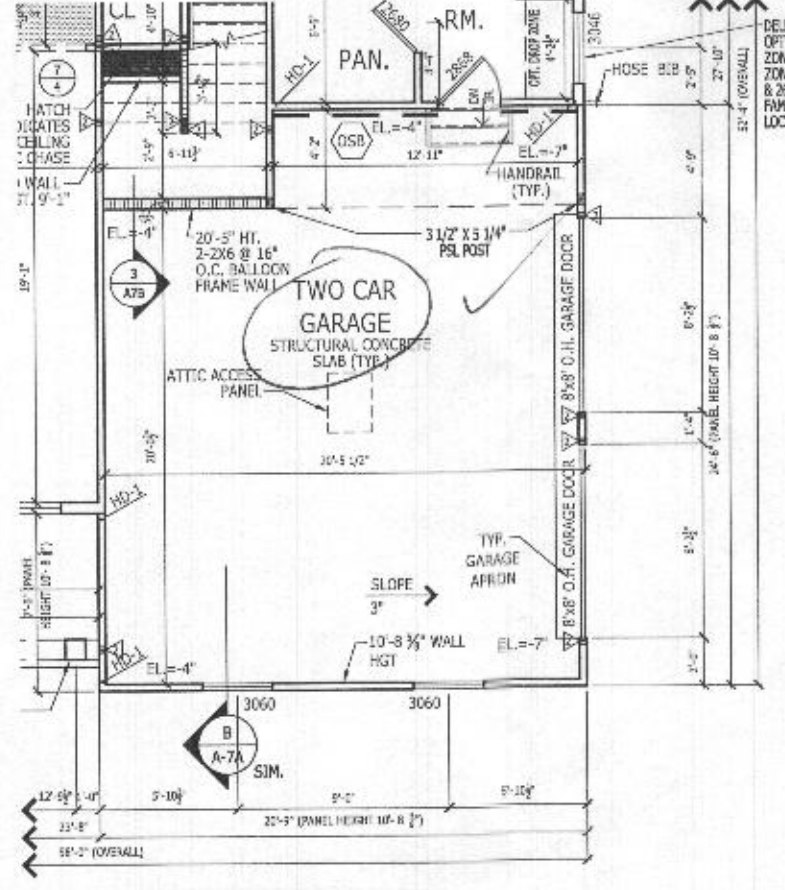
**PARTIAL BASEMENT FOUNDATION PLAN**  
FAIRVIEW SHOWN  
Scale: 1/4" = 1'-0"



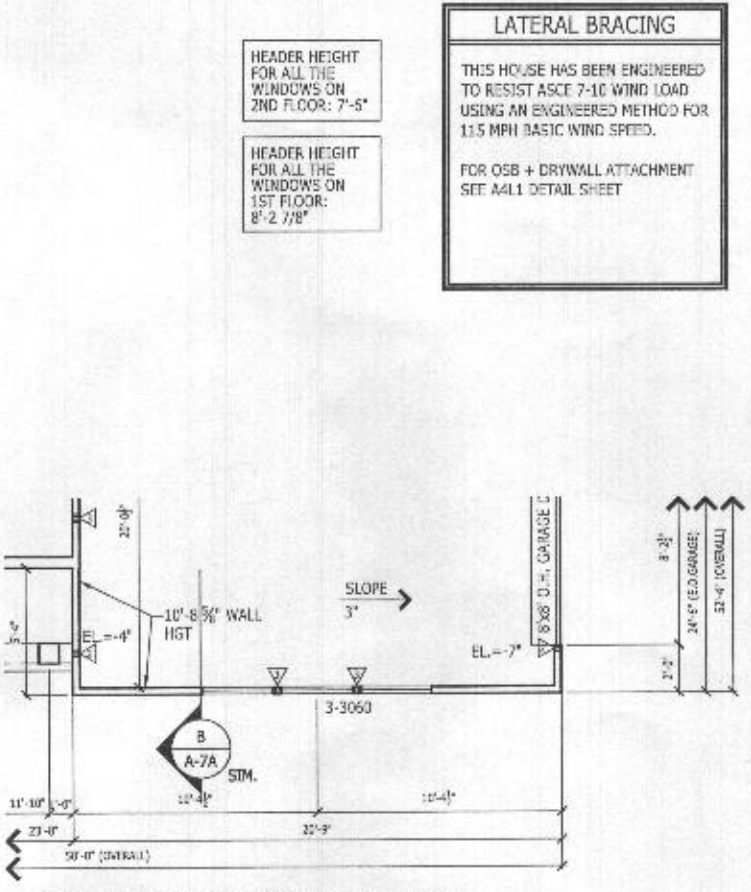
**PARTIAL FIRST FLOOR PLAN**  
FAIRVIEW SHOWN  
Scale: 1/4" = 1'-0"



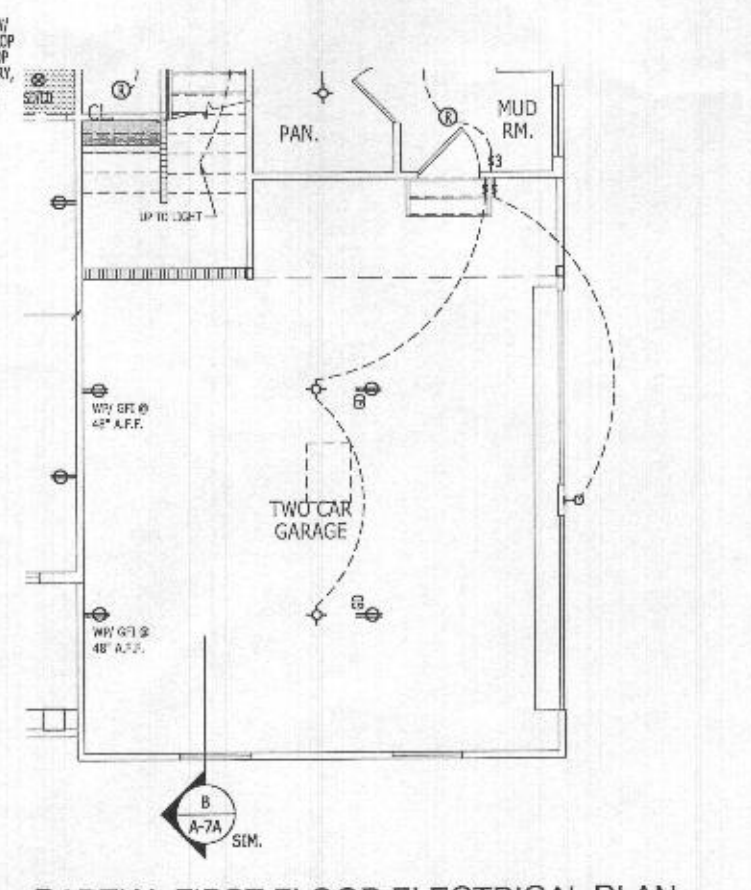
**PARTIAL BASEMENT FOUNDATION PLAN**  
CRAFTSMAN SHOWN (MANOR AND M. FARMHOUSE SIM.)  
Scale: 1/4" = 1'-0"



**PARTIAL FIRST FLOOR PLAN**  
CRAFTSMAN SHOWN (MANOR SIM.)  
Scale: 1/4" = 1'-0"



**PARTIAL FIRST FLOOR PLAN**  
MODERN FARMHOUSE SHOWN  
Scale: 1/4" = 1'-0"



**PARTIAL FIRST FLOOR ELECTRICAL PLAN**  
CRAFTSMAN SHOWN (MAN., MOD. & FRV. SIM.)  
Scale: 1/4" = 1'-0"

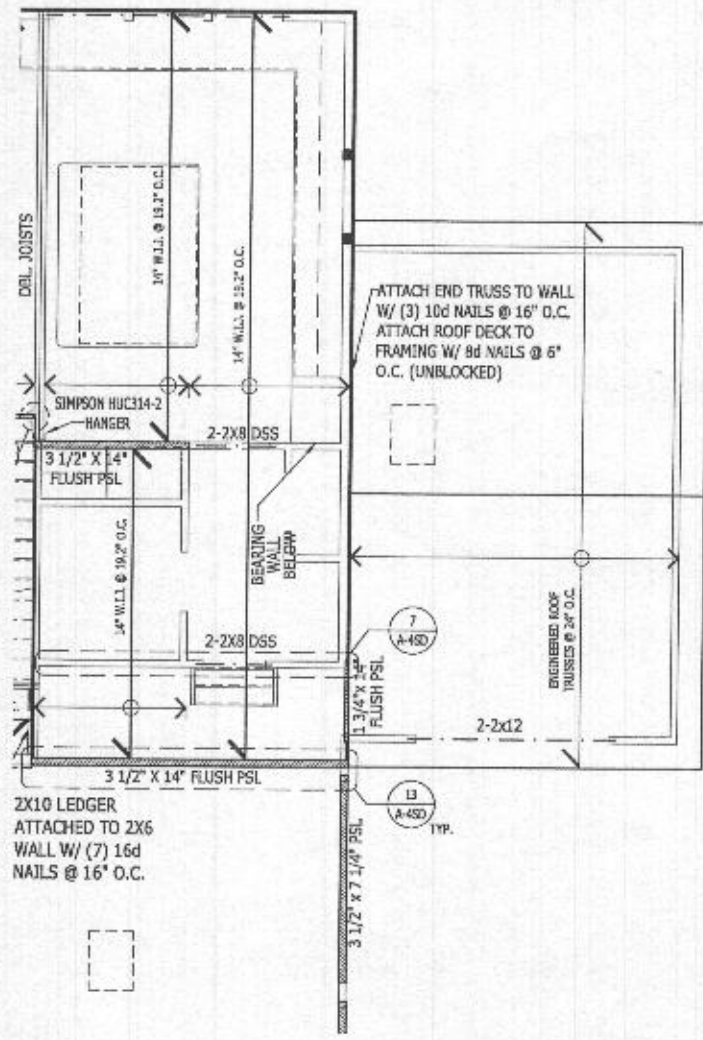
HEADER HEIGHT FOR ALL THE WINDOWS ON 2ND FLOOR: 7'-5"  
HEADER HEIGHT FOR ALL THE WINDOWS ON 1ST FLOOR: 8'-2 7/8"

**LATERAL BRACING**  
THIS HOUSE HAS BEEN ENGINEERED TO RESIST ASCE 7-10 WIND LOAD USING AN ENGINEERED METHOD FOR 115 MPH BASIC WIND SPEED.  
FOR OSB + DRYWALL ATTACHMENT SEE A4.1 DETAIL SHEET

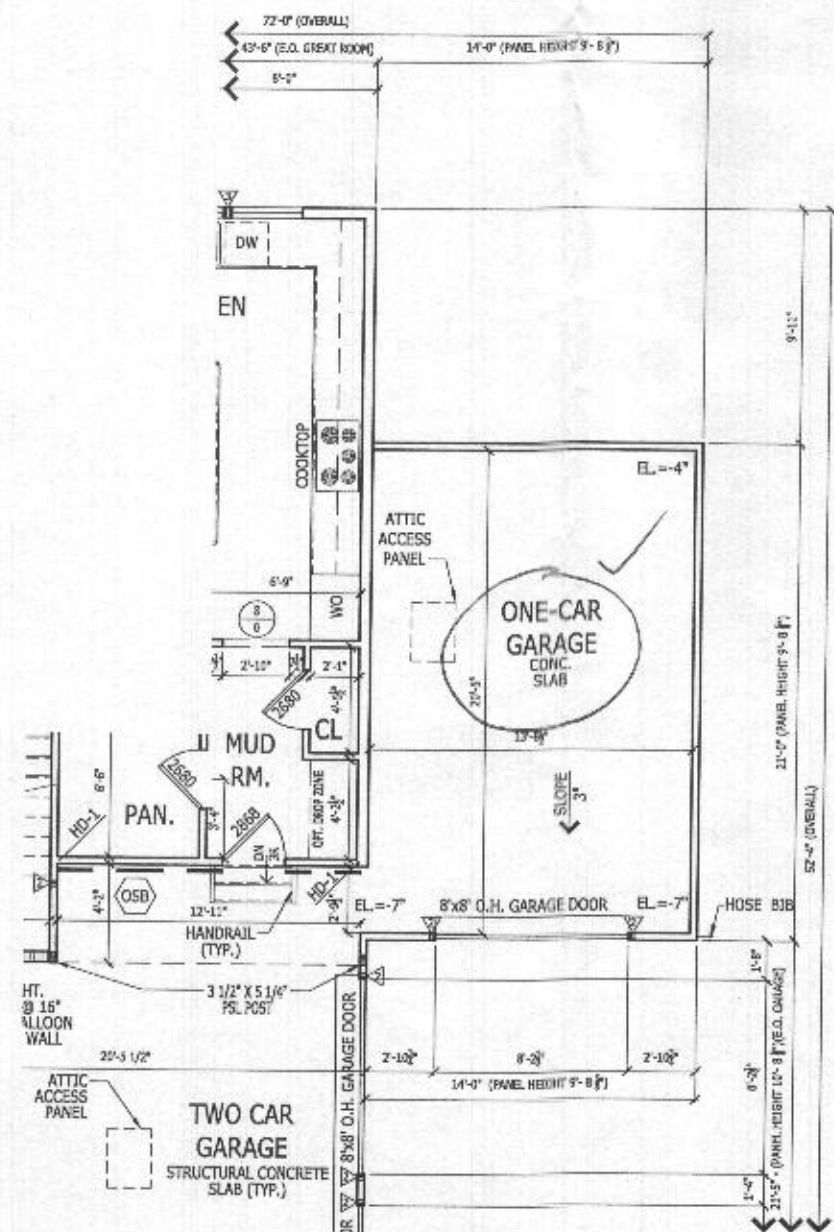
RIGHT HAND SET

<b>TOLLARCHITECTURE</b>	
PHILADELPHIA · ORLANDO DALLAS · LOS ANGELES · SEATTLE 1140 Virginia Drive, Fort Washington, PA 19004 P 215-293-5300   F 215-293-5314 A Division of Toll Brothers	
SHEET REVISION INFO 230625	SET REVISION INFO 202347
PRODUCT LINE DUMONT	ELEVATION NAME
DRAWN BY - K.SIDHUPURA	CHECKED BY - TOLLARCH
SHEET DATE - 03.13.2019	
SHEET DESCRIPTION OPT # 012- TWO CAR SIDE ENTRY GARAGE ILO STANDARD GARAGE CONFIGURATION	
SHEET NUMBER 012	SERIAL NUMBER 1018.0

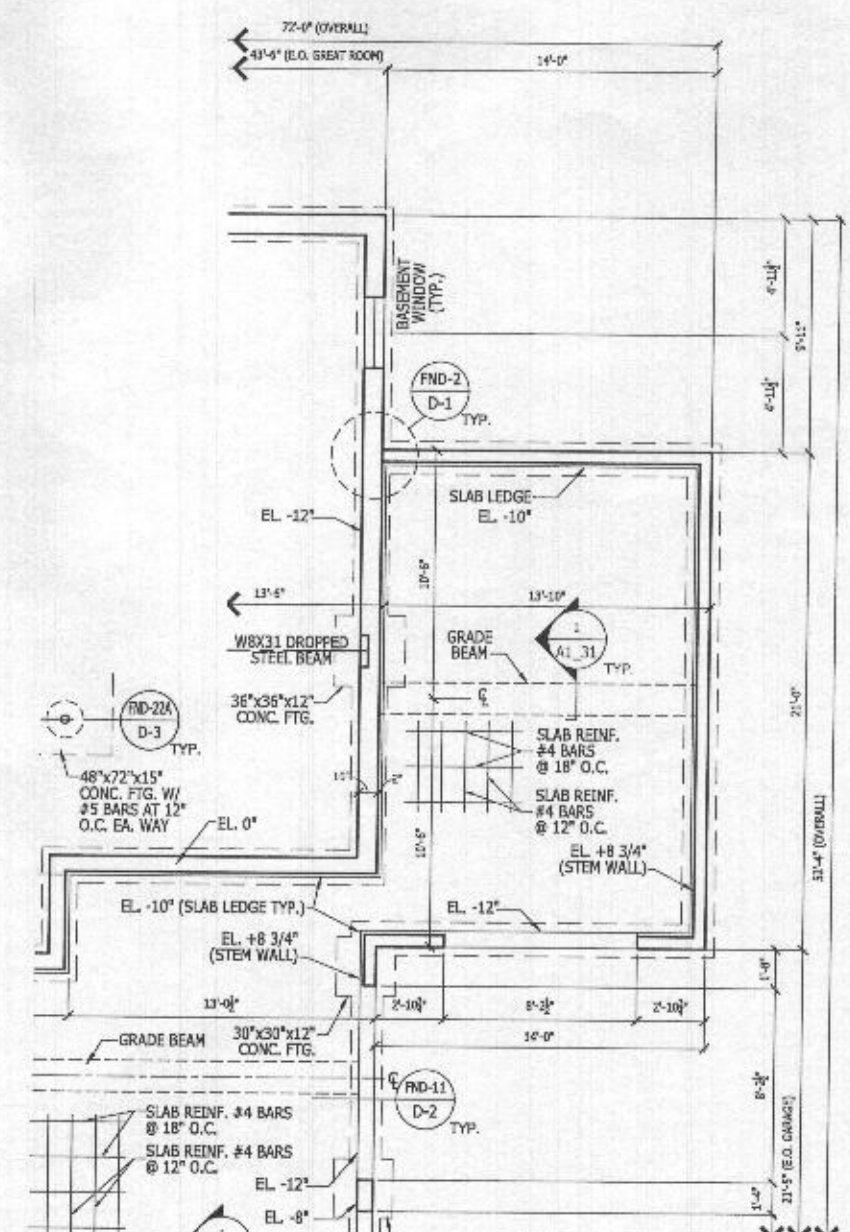
ALL IDEAS, DESIGNS, ARRANGEMENTS AND PLANS INDICATED OR REPRESENTED BY THIS DRAWING ARE OWNED BY AND THE PROPERTY OF TOLL BROTHERS, INC. AND ARE COPYRIGHTED. THEY WERE CREATED, EVOLVED AND DEVELOPED FOR USE ON, AND IN CONNECTION WITH THE SPECIFIED PROJECT. NONE OF SUCH IDEAS, DESIGNS, ARRANGEMENTS OR PLANS SHALL BE USED BY OR DISCLOSED TO ANY PERSON, FIRM OR CORPORATION FOR ANY PURPOSE WHATSOEVER WITHOUT THE WRITTEN PERMISSION OF TOLL BROTHERS, INC. WRITTEN DIMENSIONS ON THESE DRAWINGS SHALL HAVE PRECEDENCE OVER SCALED DIMENSIONS CONTRACTORS SHALL VERIFY, AND BE RESPONSIBLE FOR ALL DIMENSIONS AND CONDITIONS ON THE JOB AND TOLL BROTHERS OFFICE MUST BE NOTIFIED OF ANY VARIATIONS FROM THE DIMENSIONS AND CONDITIONS SHOWN BY THESE DRAWINGS.



**PARTIAL SECOND FLOOR FRAMING PLAN**  
Scale: 1/4" = 1'-0"  
CRAFTSMAN SHOWN (ALL ELEVATION SIM.)



**PARTIAL FIRST FLOOR PLAN**  
Scale: 1/4" = 1'-0"  
CRAFTSMAN SHOWN (ALL ELEVATION SIM.)



**PARTIAL BASEMENT FOUNDATION PLAN**  
Scale: 1/4" = 1'-0"  
CRAFTSMAN SHOWN (ALL ELEVATION SIM.)

**LATERAL BRACING**  
THIS HOUSE HAS BEEN ENGINEERED TO RESIST ASCE 7-10 WIND LOAD USING AN ENGINEERED METHOD FOR 115 MPH BASIC WIND SPEED.  
FOR OSB + DRYWALL ATTACHMENT SEE A4L1 DETAIL SHEET

HEADER HEIGHT FOR ALL THE WINDOWS ON 2ND FLOOR: 7'-6"

NOTE: SIDE ENTRY GARAGE OPTIONS 012 OR 001 MUST BE ORDERED WITH OPTION 263102

HEADER HEIGHT FOR ALL THE WINDOWS ON 1ST FLOOR: 8'-2 7/8"

THIS OPTION DETAIL SHOWS OPTION 263102 W/ OPTION 012

RIGHT HAND SET

SHEET DESCRIPTION  
OPT #263102- ADDITIONAL ONE CAR FRONT ENTRY GARAGE - 14'

SHEET NUMBER  
**263102**

SHEET REVISION INFO

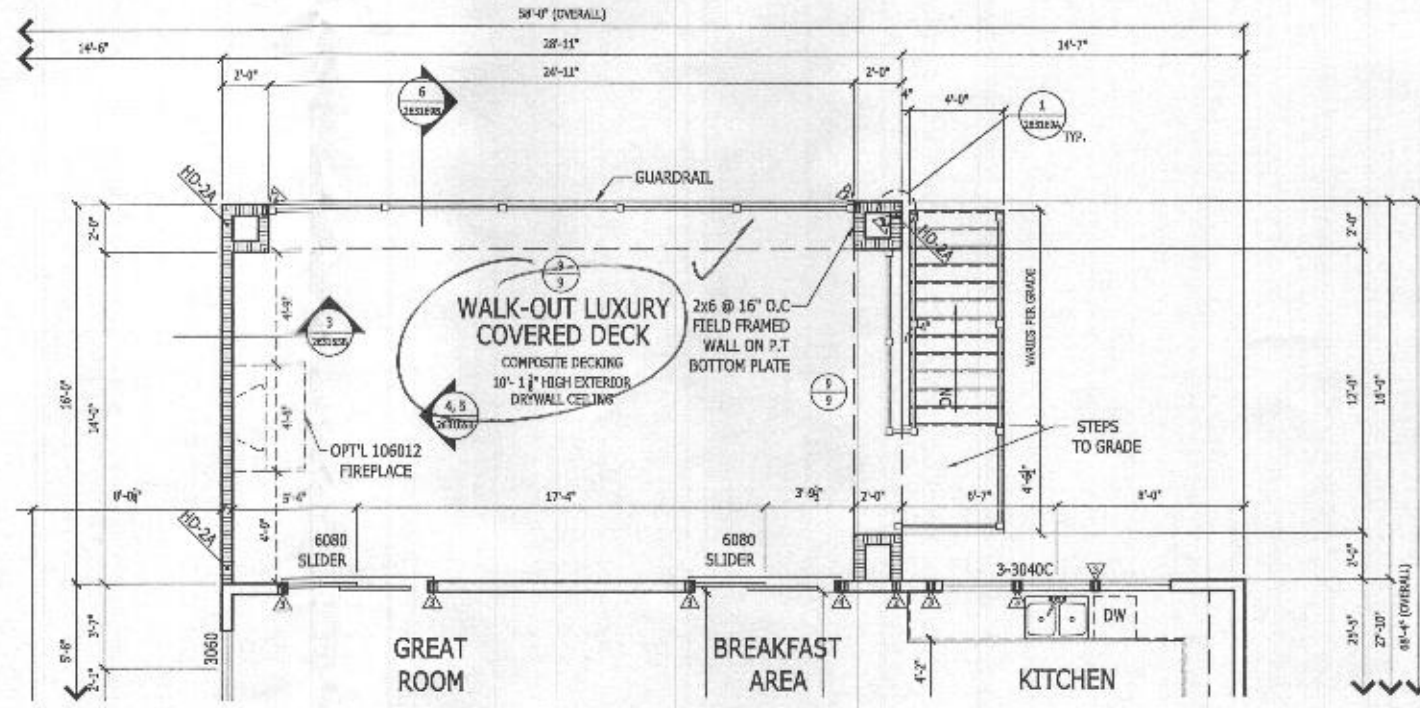
SET REVISION INFO  
202347

TOLLARCHITECTURE

PHILADELPHIA - ORLANDO  
DALLAS - LOS ANGELES - SEATTLE  
250 Gibraltar Road, Horsham, PA 19044  
P 215-293-5300 | F 215-293-5314  
A Division of Toll Brothers

SERIAL NUMBER  
1018.0

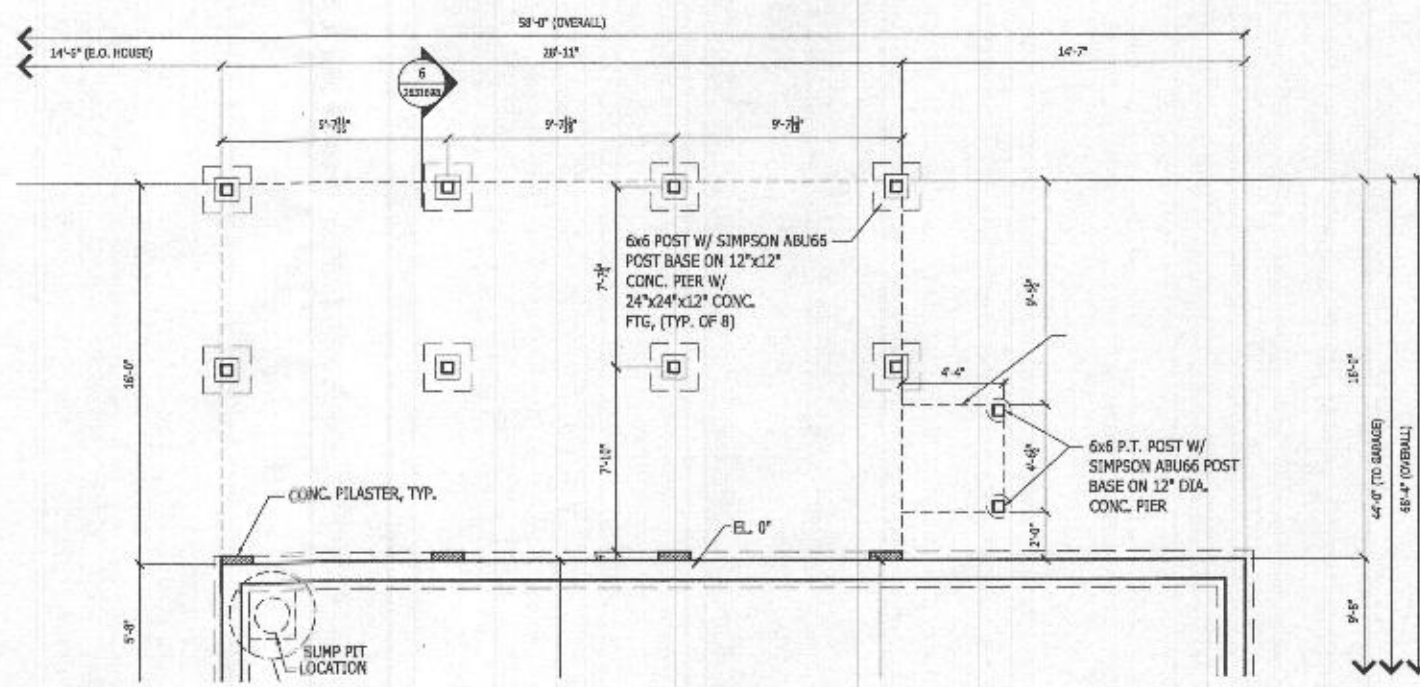
DATE: 08/26/19, 08:07:00, 19:00:00  
 ALL IDEAS, DESIGNS, ARRANGEMENTS AND PLANS INDICATED OR REPRESENTED BY THIS DRAWING ARE OWNED BY AND THE PROPERTY OF TOLL BROTHERS, INC. AND ARE COPYRIGHTED. THEY WERE CREATED, EVOLVED AND DEVELOPED FOR USE ON, AND IN CONNECTION WITH THE SPECIFIED PROJECT. NONE OF SUCH IDEAS, DESIGNS, ARRANGEMENTS OR PLANS SHALL BE USED BY OR DISCLOSED TO ANY PERSON, FIRM OR CORPORATION FOR ANY PURPOSE WHATSOEVER WITHOUT THE WRITTEN PERMISSION OF TOLL BROTHERS, INC. WRITTEN DIMENSIONS ON THESE DRAWINGS SHALL HAVE PRECEDENCE OVER SCALED DIMENSIONS CONTRACTORS SHALL VERIFY, AND BE RESPONSIBLE FOR ALL DIMENSIONS AND CONDITIONS ON THE JOB AND TOLL BROTHERS OFFICE MUST BE NOTIFIED OF ANY VARIATIONS FROM THE DIMENSIONS AND CONDITIONS SHOWN BY THESE DRAWINGS.



**PARTIAL FIRST FLOOR PLAN**

Scale: 1/4" = 1'-0"

CRAFTSMAN SHOWN



**PARTIAL BASEMENT FOUNDATION PLAN**

Scale: 1/4" = 1'-0"

CRAFTSMAN SHOWN

**LATERAL BRACING**  
 THIS HOUSE HAS BEEN ENGINEERED TO RESIST ASCE 7-10 WIND LOAD USING AN ENGINEERED METHOD FOR 115 MPH BASIC WIND SPEED.  
 FOR OSB + DRYWALL ATTACHMENT SEE A4L1 DETAIL SHEET

SEE OPT.263169 FOR ADDITIONAL PLANS AND DETAILS

HEADER HEIGHT FOR ALL THE WINDOWS ON 2ND FLOOR: 7'-6"

**RIGHT HAND SET**

<b>TOLLARCHITECTURE</b>	
PHILADELPHIA - ORLANDO DALLAS - LOS ANGELES - SEATTLE	250 Gibraltar Road, Horsham, PA 19044 P 215-293-5300   F 215-293-5314 A Division of Toll Brothers
<b>SHEET REVISION INFO</b>	<b>SET REVISION INFO</b>
	202347
<b>PRODUCT LINE</b>	<b>MODEL/PROJECT NAME</b>
	<b>DUMONT</b>
	<b>ELEVATION NAME</b>
<b>DRAWN BY - A. BERNSTEIN</b>	<b>CHECKED BY - TOLL ARCH.</b>
	<b>SHEET DATE - 08/26/19</b>
<b>SHEET DESCRIPTION</b>	
OPT # 263169- WALK-OUT LUXURY COVERED DECK	
<b>SHEET NUMBER</b>	<b>263169</b>
<b>SERIAL NUMBER</b>	1018.0