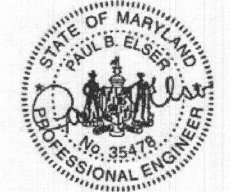


drawings, and content of this firm is the property of Keystone Custom Homes, Inc. and is protected under copyright law. Reproduction in any form without express written consent is strictly prohibited. All copyright notices are protected by United States Copyright Law (Title 17, United States Code) and the Berne Convention for the international protection of literary and artistic works. Federal and International Copyright protection laws extend to original and modified derivative plans, architectural works, concepts and designs, and is applicable to international and international infringements, and provides for specific statutory damages both civil and criminal.

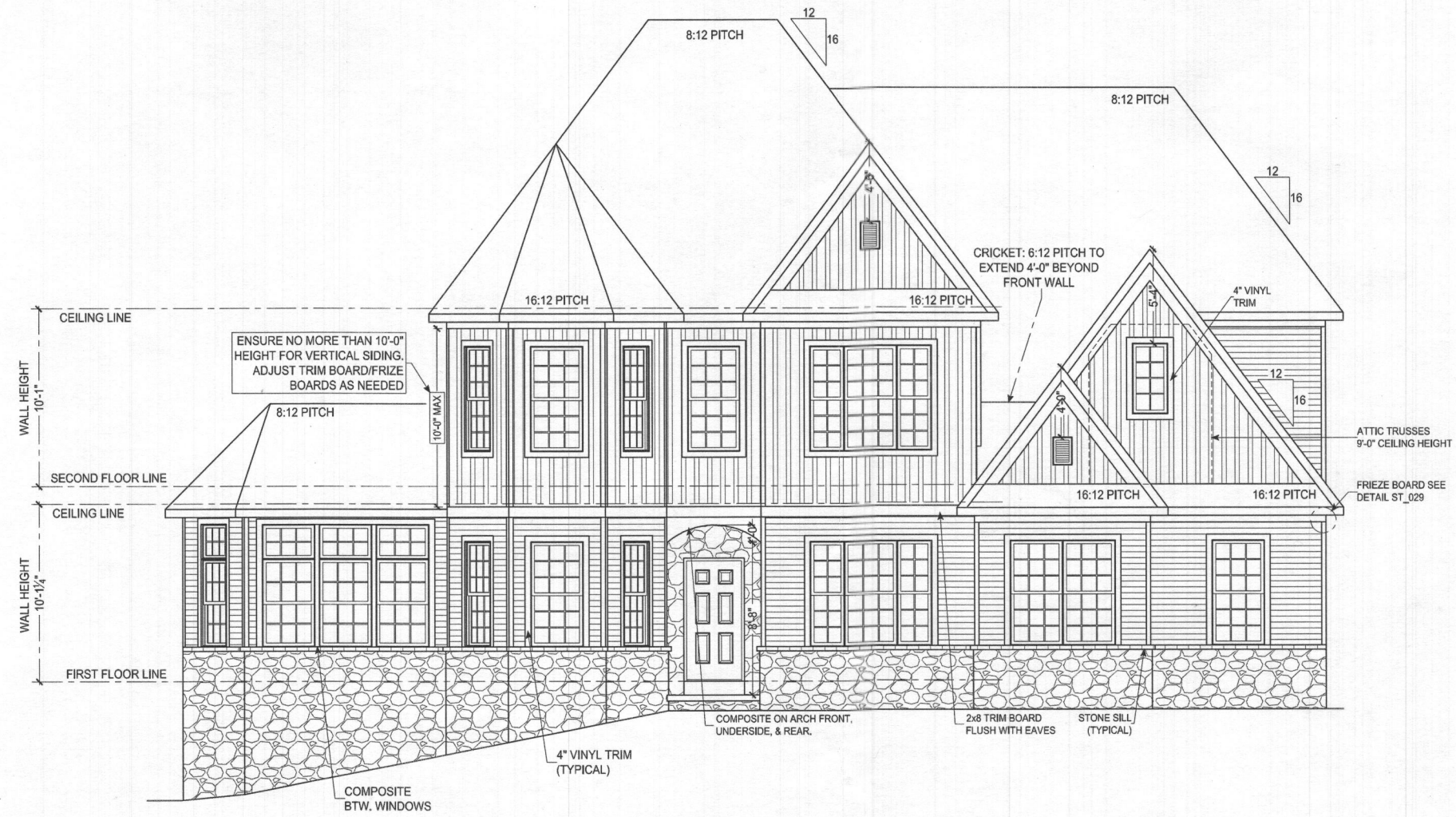
227 GRANITE RUN DRIVE, SUITE 100  
 LANCASTER, PENNSYLVANIA 17601  
 PH: (717) 464-9060 • FAX: (717) 464-9046  
 www.keystonectustomhome.com



KEYSTONE CUSTOM HOMES, INC.



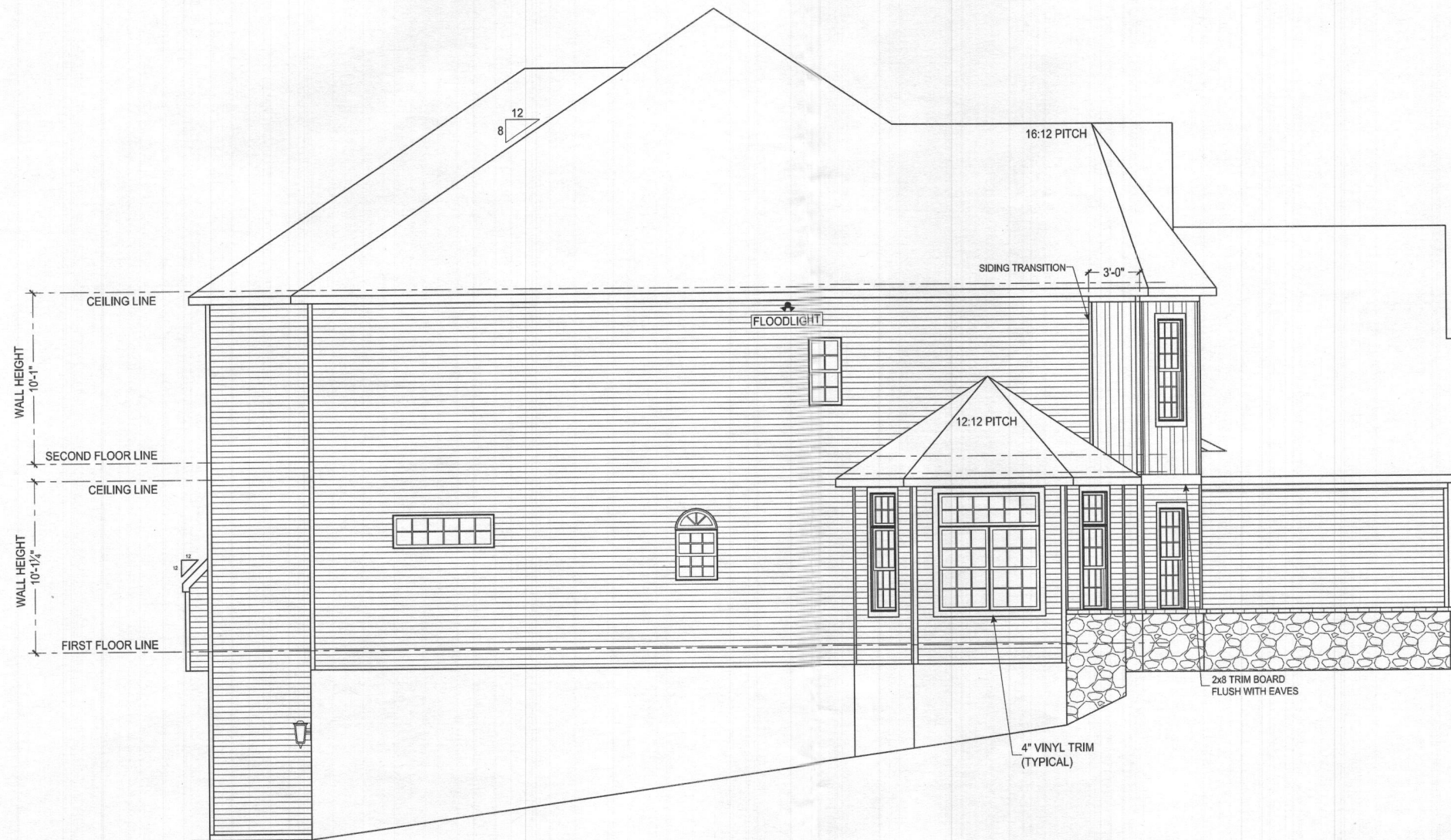
Professional Certification, I hereby certify that these documents were prepared or approved by me, and that I am a fully licensed professional engineer under the Laws of the State of Maryland. License No. 35478, Expiration Date: 05-16-2027.



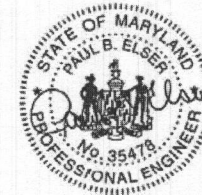
FRONT ELEVATION  
 SCALE: 3/16" = 1'-0"

SHEET DESCRIPTION:	FRONT ELEVATION
MODEL:	MRs007
	CUNNINGHAM
UPDATED:	NOV 22 2019
SCALE:	AS NOTED
DRAWN BY:	E. WEAVER
SHEET NO.	A1.0
PLANT:	2 5 10

Keystone Custom Homes, Inc.



**LIVING SIDE ELEVATION**  
SCALE: 3/16" = 1'-0"



"Professional Certification, I hereby certify that these documents were prepared or approved by me, and that I am a fully licensed professional engineer under the Laws of the State of Maryland. License No. 35478, Expiration Date: 06-16-2007."

All dimensions, notes, drawings, and content of this firm is the property of Keystone Custom Homes, Inc. and is protected under copyright law. Reproduction in any form without express written consent is strictly prohibited. All copyrighted works are protected by United States Copyright Law (Title 17, United States Code) and the Berne Convention for the International Protection of Literary and Artistic Works. Federal and International Copyright protection laws extend to original and modified derivative plans, architectural works, concepts and designs, and is applicable to international and uninternational infringements, and provides for specific statutory damages both civil and criminal.

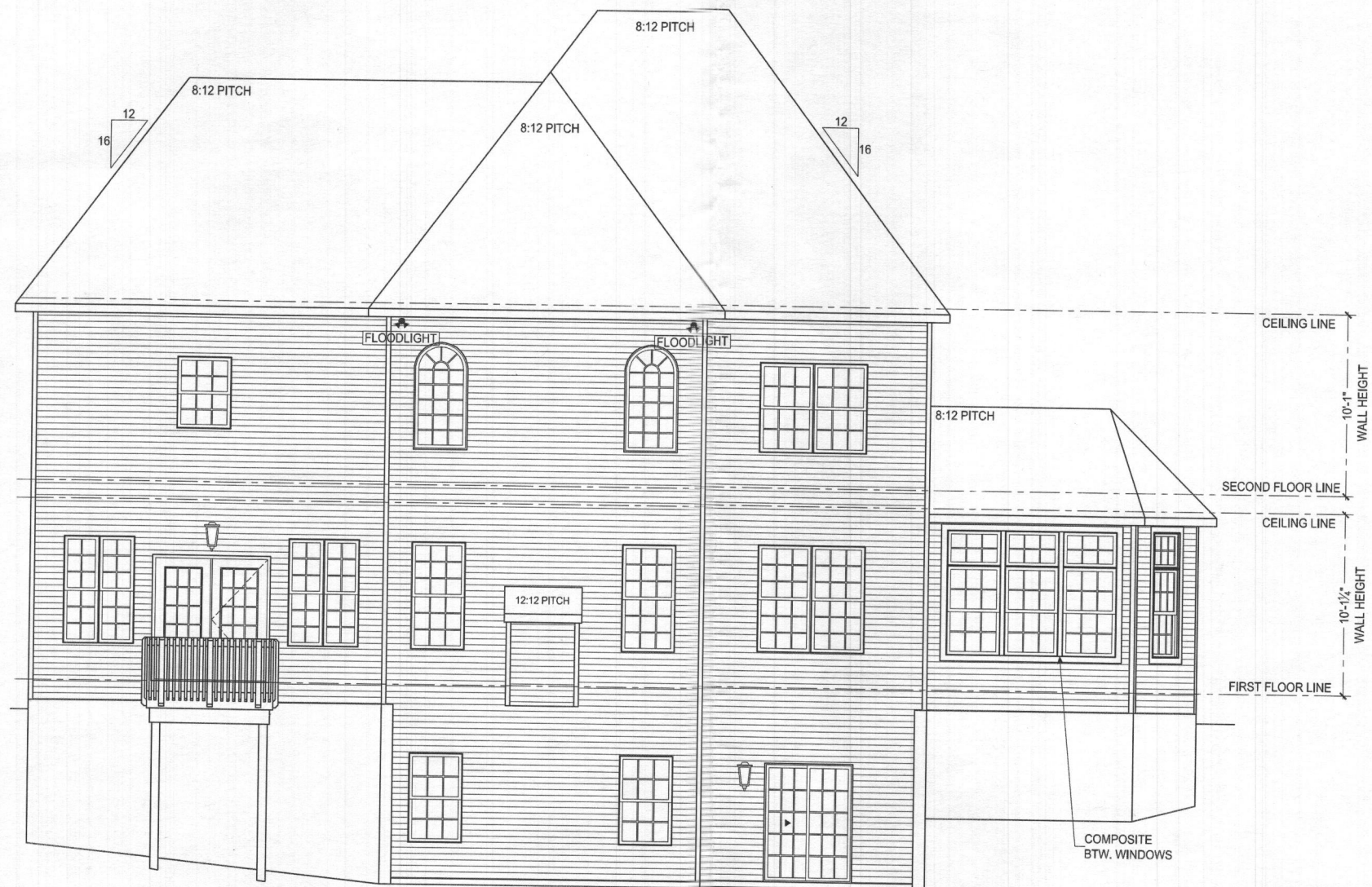
227 GRANITE RUN DRIVE, SUITE 100  
LANCASTER, PENNSYLVANIA 17601  
PH: (717) 464-9060 • FAX: (717) 464-9046  
www.keystoncustomhome.com



**KEYSTONE CUSTOM HOMES, INC.**

SHEET DESCRIPTION: LIVING SIDE ELEVATION	MODEL:	MR4007
		CUNNINGHAM
UPDATED:	NOV 22 2019	
SCALE:	AS NOTED	
DRAWN BY:	E. WEAVER	
SHEET NO.:	A1.1	
PLAN NO.:	2019-10	

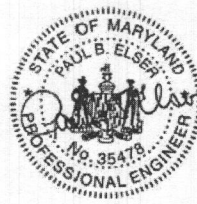
Keystone Custom Homes, Inc.



**REAR ELEVATION**  
SCALE 3/16" = 1'-0"

drawings, and content of this firm is the property of Keystone Custom Homes, Inc. and is protected under copyright law. Reproduction in any form without express written consent is strictly prohibited. All copyrighted works are protected by United States Copyright Law (Title 17, United States Code) and the Berne Convention for the International protection of literary and artistic works. Federal and International Copyright protection laws extend to original and modified derivative plans, architectural works, concepts and designs, and is applicable to International and uninternational arrangements, and provides for specific statutory damages both civil and criminal.

227 GRANITE RUN DRIVE, SUITE 100  
LANCASTER, PENNSYLVANIA 17601  
PH: (717) 464-9060 • FAX: (717) 464-9046  
www.keystonecustomhome.com

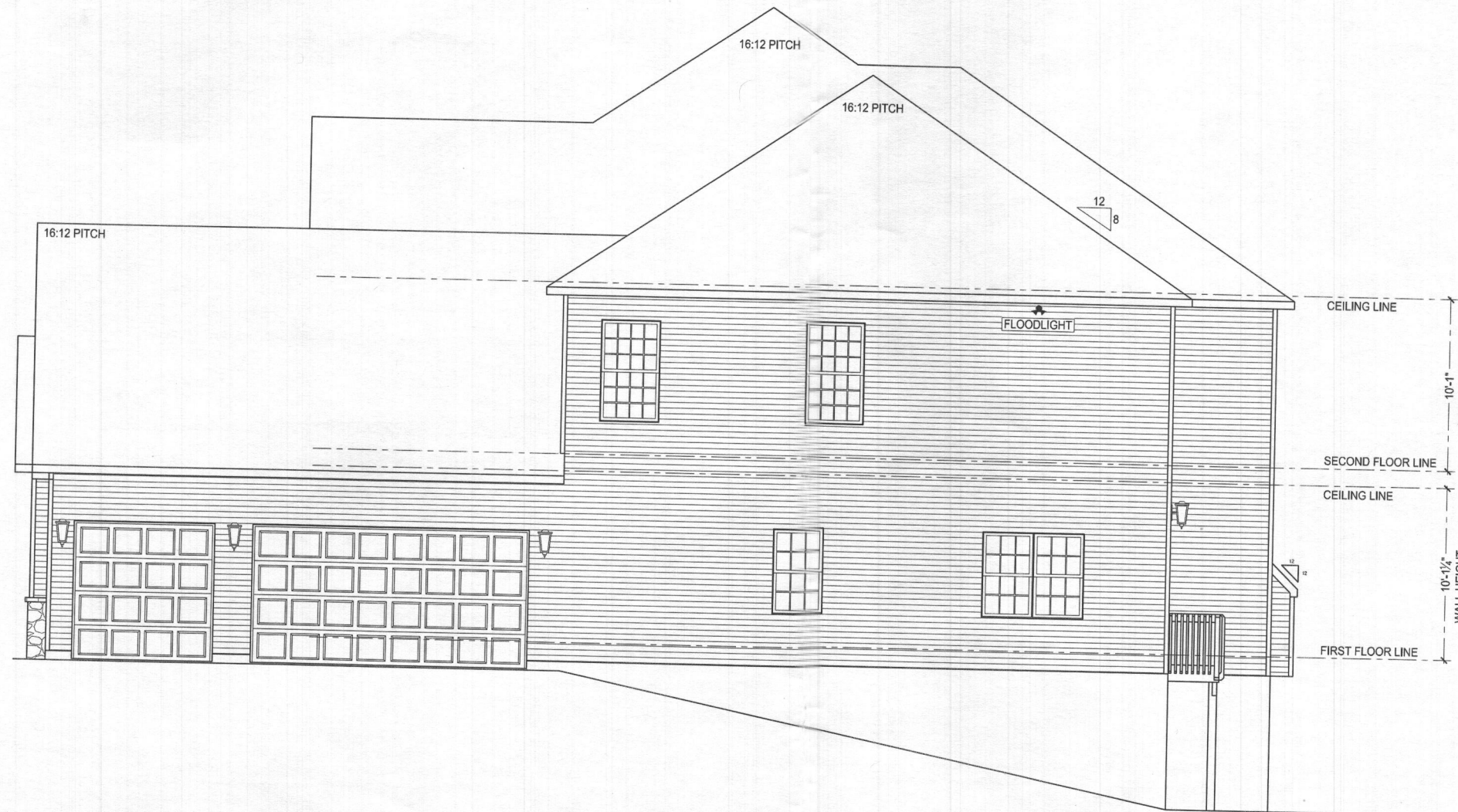


Professional Certification, I hereby certify that these documents were prepared or approved by me, and that I am a fully-licensed professional engineer under the Laws of the State of Maryland. License No. 35478, Expiration Date: 06-15-2027.



**KEYSTONE CUSTOM HOMES, INC.**

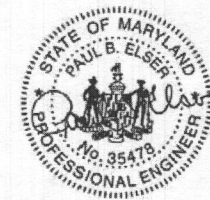
SHEET DESCRIPTION:	REAR ELEVATION
	MODEL: MRS007 CUNNINGHAM
UPDATED:	NOV 22 2019
SCALE:	AS NOTED
DRAWN BY:	E. WEAVER
SHEET NO.:	A12
PLAN ID:	2019-10



**GARAGE SIDE ELEVATION**  
SCALE: 3/16" = 1'-0"

The architectural design, drawings, and content of this firm is the property of Keystone Custom Homes, Inc. and is protected under copyright law. Reproduction in any form without express written consent is strictly prohibited. All copyrighted works are protected by United States Copyright Law (Title 17, United States Code) and the Berne Convention for the International Protection of Literary and Artistic Works. Federal and International Copyright protection laws extend to original and modified derivative plans, architectural works, concepts and designs, and is applicable to international and uninternational infringements, and provides for specific statutory damages both civil and criminal.

227 GRANITE RUN DRIVE, SUITE 100  
LANCASTER, PENNSYLVANIA 17601  
PH: (717) 464-9060 • FAX: (717) 464-9046  
www.keystonecustomhome.com



Professional Certification, I hereby certify that these documents were prepared or approved by me, and that I am a fully licensed professional engineer under the Laws of the State of Maryland. License No. 35478, Expiration Date: 05-18-2020.



**KEYSTONE CUSTOM HOMES, INC.**

SHEET DESCRIPTION: GARAGE SIDE ELEVATION  
MODEL: MRs007 CUNNINGHAM

UPDATED: NOV 22 2019  
SCALE: AS NOTED  
DRAWN BY: E.WEAVER

SHEET NO. **A1.3**

Keystone Custom Homes, Inc.

The architectural design, drawings, and content of this firm is the property of Keystone Custom Homes, Inc. and is protected under copyright law. Reproduction in any form without express written consent is strictly prohibited. All copyrighted works are protected by United States Copyright Law (Title 17, United States Code) and the Berne Convention for the International Protection of Literary and Artistic Works. Federal and International Copyright protection laws extend to original and modified derivative plans, architectural works, concepts and designs, and is applicable to International and uninternational infringements, and provides for specific statutory damages both civil and criminal.

227 GRANITE RUN DRIVE, SUITE 100  
LANCASTER, PENNSYLVANIA 17601  
PH: (717) 464-9060 • FAX: (717) 464-9046  
www.keystonecustomhomes.com



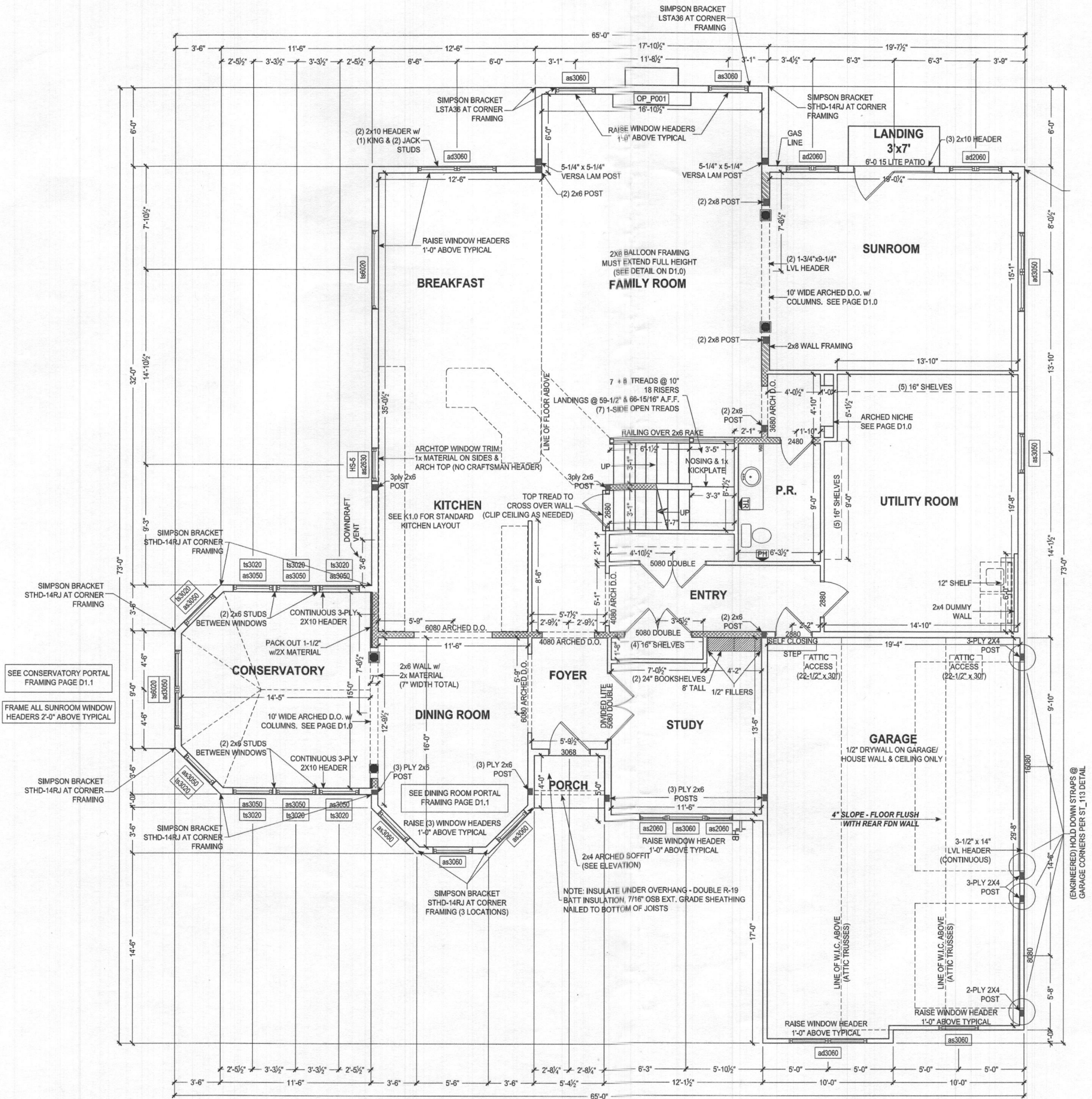
Professional Certification, I hereby certify that these documents were prepared or approved by me, and that I am a fully licensed professional engineer under the Laws of the State of Maryland. License No. 35478, Expiration Date: 06-16-2027.

**KEYSTONE CUSTOM HOMES, INC.**

SHEET DESCRIPTION: FIRST FLOOR PLAN  
MODEL: MRs007 CUNNINGHAM  
UPDATED: NOV 22 2019  
SCALE: AS NOTED  
DRAWN BY: E.WEAVER  
SHEET NO. P1.0

**FIRST FLOOR PLAN**  
SCALE: 3/16" = 1'-0"

ALL EXTERIOR WALLS ARE 100% CONT. STRUCTURAL SHEATHING (METHOD #3, PER ST\_112)  
GYPSUM BOARD, TWO SIDES  
2x6 INTERIOR WALL  
INTERIOR HALF WALL  
FRAMING POST



Professional Certification, I hereby certify that these documents were prepared or approved by me, and that I am a fully licensed professional engineer under the Laws of the State of Maryland. License No. 35478, Expiration Date: 06-16-2027.



