

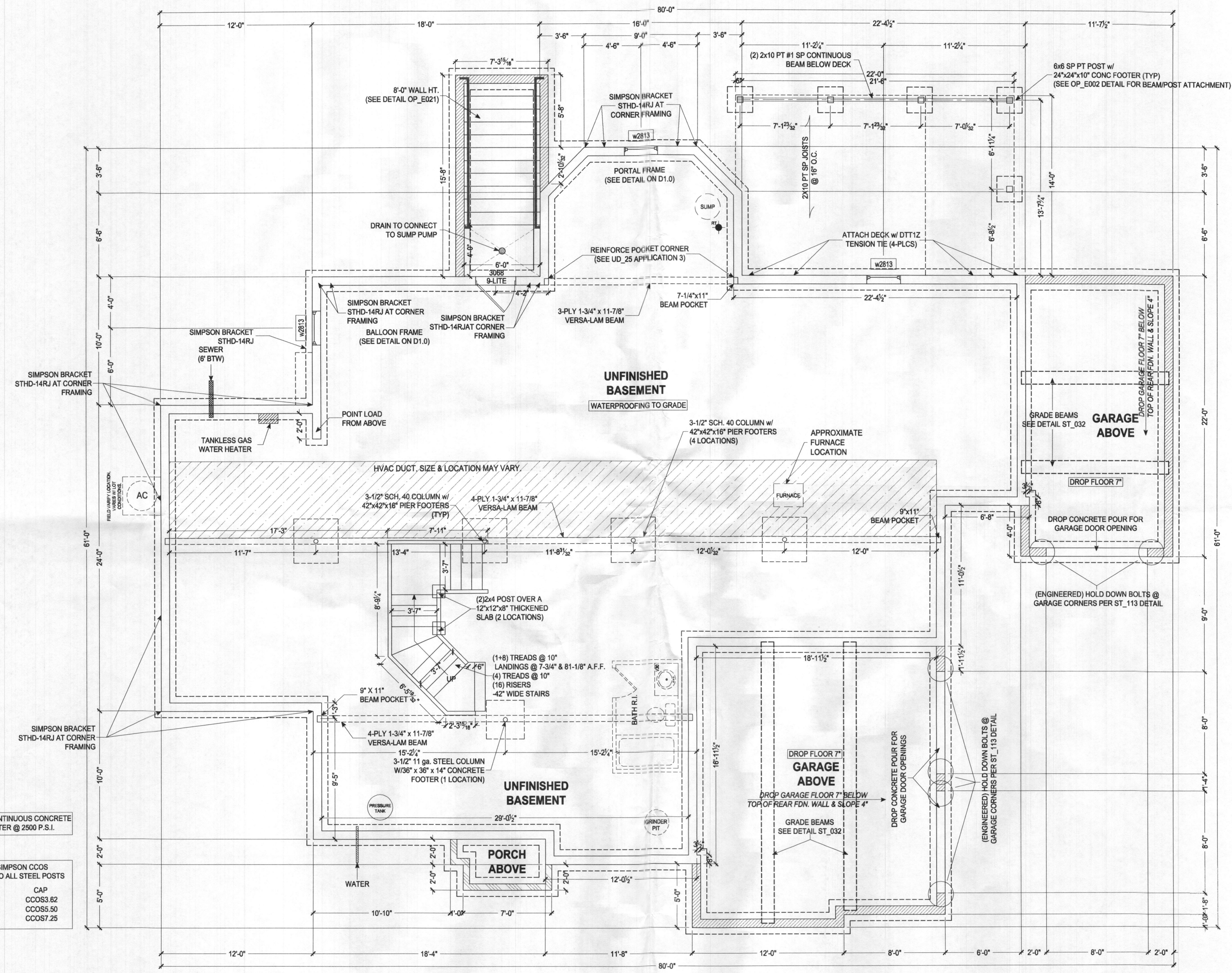
The architectural design, drawings, and contents of this firm is the property of Keystone Custom Homes, Inc. and is protected under copyright law. Reproduction in any form without express written consent is strictly prohibited. All copyrighted works are protected by United States Copyright Law (Title 17, United States Code) and the Berne Convention for the International Protection of Literary and Artistic Works. Federal and International Copyright protection laws extend to original and modified derivative plans, architectural works, concepts and designs, and is applicable to International and uninternational arrangements, and provisions for specific statutory damages both civil and criminal.

227 GRANITE RUN DRIVE, SUITE 100
LANCASTER, PENNSYLVANIA 17601
PH: (717) 464-9060 • FAX: (717) 464-9046
www.keystonecustomhome.com



KEYSTONE CUSTOM HOMES, INC.

FOUNDATION PLAN
ZhoDF1
RIZVI
MAR 9 2022
AS NOTED
L. JARMOSKA
P1.2
ads 10



SQUASH BLOCKS REQUIRED IN FLOOR FRAMING UNDER ALL POST LOADS, SAME SIZE AS POST

FOUNDATION PLAN
SCALE: 3/16" = 1'-0"



03/09/2022

Professional Certification. I hereby certify that these documents were prepared or approved by me, and that I am a duly licensed professional engineer under the laws of the State of Maryland, License No. 50358, Expiration Date: 12-12-2022

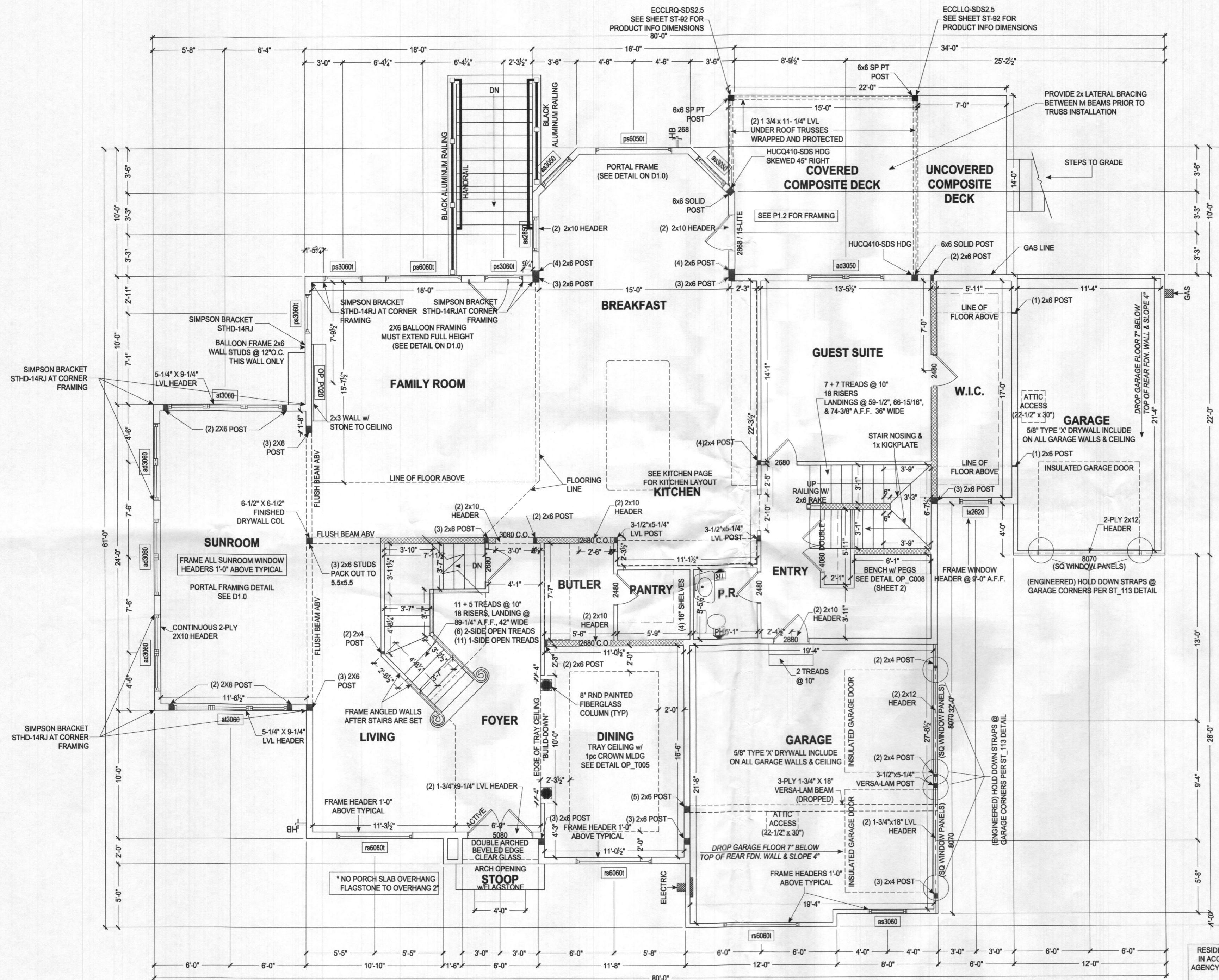
- 8" THICK POURED CONCRETE WALLS
- 9'-0" HIGH MAIN HOUSE BASEMENT WALLS STANDARD
- 6" THICK POURED CONCRETE WALLS
- CHECK P.O. FOR WALL HEIGHT OF CRAWL SPACE AND GARAGE WALLS
- 6" THICK POURED CONCRETE WALLS
- CHECK P.O. FOR WALL HEIGHT OF FRONT PORCH WALLS

NOTE TO HOMEOWNER(S): LOCATIONS SHOWN FOR HVAC, PLUMBING, AND OTHER MECHANICAL ITEMS WILL BE USED IF POSSIBLE. ACTUAL PLACEMENT OF FURNACE, WATER HEATER, SUMP PIT, ETC. MAY VARY DUE TO INDIVIDUAL SITE REQUIREMENTS.

Professional Certification. I hereby certify that these documents were prepared or approved by me, and that I am a duly licensed professional engineer under the laws of the State of Maryland, License No. 50358, Expiration Date: 12-12-2022



The architectural design, drawings, and content of this firm is the property of Keystone Custom Homes, Inc. and is protected under copyright law. Reproduction in any form without express written consent is strictly prohibited. All copyrighted works are protected by United States Copyright Law (Title 17, United States Code) and the Berne Convention for the International Protection of Literary and Artistic Works. Federal and International Copyright protection laws extend to original and modified derivative plans, architectural works, concepts and designs, and is applicable to international and international infringement, and provides for specific statutory damages both civil and criminal.



RESIDENTIAL SPRINKLER SYSTEM TO BE INSTALLED IN ACCORDANCE WITH THE 2018 IRC. THIRD PARTY AGENCY TO PROVIDE DRAWINGS AND INSTALL SYSTEM. CONCEALED

SQUASH BLOCKS REQUIRED IN FLOOR FRAMING UNDER ALL POST LOADS, SAME SIZE AS POST

FIRST FLOOR PLAN
SCALE: 3/16" = 1'-0"

ALL EXTERIOR WALLS ARE 100% CONT. STRUCTURAL SHEATHING (METHOD #3, PER ST_112)

2 x 6 INTERIOR WALL	INTERIOR HALF WALL	FRAMING POST

227 GRANITE RUN DRIVE, SUITE 100
LANCASTER, PENNSYLVANIA 17601
PH: (717) 464-9060 • FAX: (717) 464-9046
www.keystonecustomhomes.com



KEYSTONE CUSTOM HOMES, INC.

SHEET DESCRIPTION	FIRST FLOOR PLAN
MODEL	ZhoOF1 RIZVI
UPDATED	MAR 9 2022
SCALE	AS NOTED
DRAWN BY	L. JARMOSKA
SHEET NO.	P1.0
PLAN ID.	ads10

NOTE:
 HEIGHT OF EXTERIOR WALL-MOUNTED LIGHT FIXTURES TO BE
 4'-0" ABOVE THRESHOLD TO CENTER OF ELECTRICAL BOX.
 EXTERIOR LIGHT @ OVERHEAD GARAGE DOOR TO BE
 7'-0" ABOVE CONCRETE GARAGE FLOOR TO CENTER OF BOX)

The architectural design, drawings, and content of this firm is the property of Keystone Custom Homes, Inc. and is protected under copyright law. Reproduction in any form without express written consent is strictly prohibited. All copyrighted works are protected by United States Copyright Law (Title 17, United States Code) and the Berne Convention for the International Protection of Literary and Artistic Works. Federal and International Copyright protection laws extend to original and modified derivative plans, architectural works, concepts and designs, and is applicable to international and uninternational infringements, and provides for specific statutory damages both civil and criminal.

227 GRANITE RUN DRIVE, SUITE 100
 LANCASTER, PENNSYLVANIA 17601
 PH: (717) 464-9060 • FAX: (717) 464-9046
 www.keystonecustomhomes.com



KEYSTONE CUSTOM HOMES, INC.

ELECTRICAL LEGEND

LIGHTING			RECEPTACLES STD. RECEPTACLES: ARC FAULT / TAMPER RESISTANT		SWITCHES		UTILITY		
	CEILING MOUNTED		KEYLESS FIXTURE		DUPLEX		SMOKE DETECTOR		
	WALL MOUNTED		FLUORESCENT		220 VOLT		THREE-WAY		CARBON MONOXIDE/ SMOKE DETECTOR
	WALL SCONCE		PENDANT		GROUND FAULT INTERRUPT		FOUR-WAY		TELEVISION JACK
	DOUBLE HEAD FLOODLIGHT		RECESSED		WEATHERPROOF GFI		DIMMER		RCA JACK
	DOUBLE HEAD FLOODLIGHT W/ MOTION SENSOR		RECESSED EYEBALL		GARAGE DOOR OPENER (CEILING)		CANDLE LIGHT CIRCUIT		TELEPHONE JACK
	WALL LANTERN		RECESSED SHOWER		DEDICATED INDEPEND. CIRCUIT		CANDLE, WINDOW MOUNTED SYSTEM		NETWORK JACK
	ROUGH-IN BOX (CAPPED OFF)		RECESSED EXTERIOR		MICROWAVE				GARAGE DOOR OPENER KEYPAD
	EXHAUST FAN		RECESSED LOW PROFILE		CANDLE LIGHT				SPEAKER ROUGH-IN
	EXHAUST FAN WITH LIGHT		EXHAUST FAN, HEAT LAMP		SECURITY SYSTEM				SPEAKER HOME RUN
	CEILING FAN		EXHAUST FAN WITH LIGHT AND FORCED HOT AIR		QUADRUPLE				
	CEILING FAN, ROUGH-IN				FLOOR MOUNTED				

ELECTRICAL LEGEND
NO SCALE



SHEET DESCRIPTION: ELECTRICAL LEGEND
 MODEL: ZhoOF1 RIZVI
 UPDATED: MAR 9 2022
 SCALE: AS NOTED
 DRAWN BY: L. JARMOSKA
 SHEET NO: E1.0
 PLAN ID: ads10

NOTE TO HOMEOWNERS:
 LOCATIONS SHOWN FOR LIGHTS, RECEPTACLES, AND OTHER ELECTRICAL DEVICES ARE APPROXIMATE.
 ACTUAL LOCATIONS TO BE DETERMINED BY AN ELECTRICIAN BASED ON SITE CONDITIONS INCLUDING
 CONSTRAINTS OF FRAMING, HVAC PLACEMENT, ETC.
 LOCATIONS WILL ALWAYS MEET OR EXCEED THE MINIMUM REQUIREMENTS OF THE NATIONAL ELECTRIC CODE.

Professional Certification. I hereby certify that these documents were prepared or approved by me, and that I am a duly licensed professional engineer under the laws of the State of Maryland, License No. 50358, Expiration Date: 12-12-2022