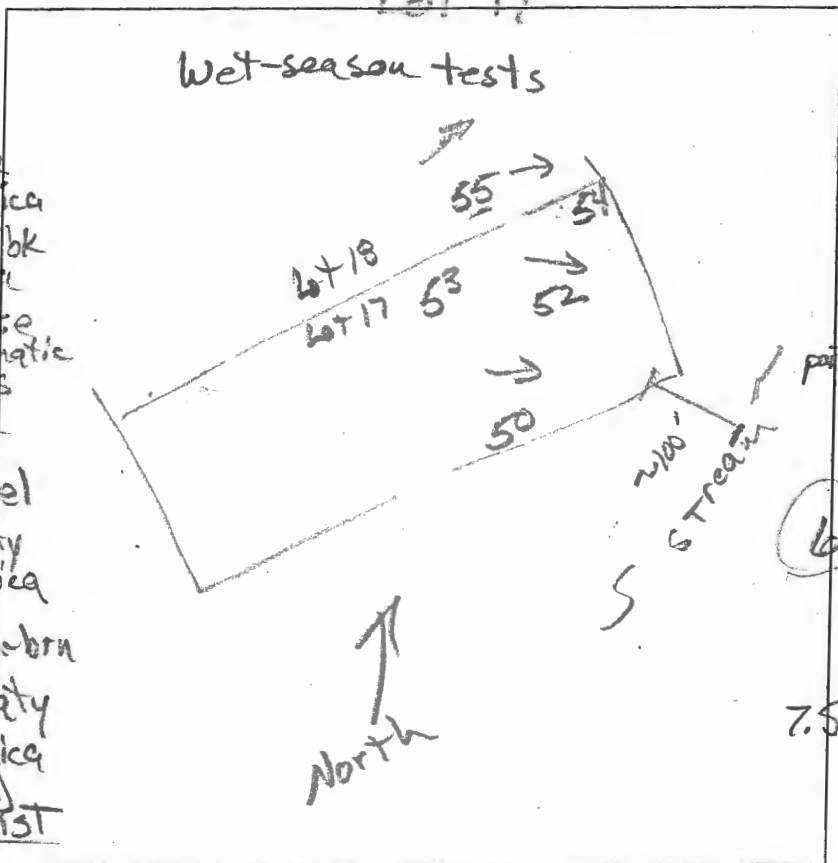


Lot 17

AVP

Wet-season tests



50
dk brn sl
brn sl, 2fsbk
common mica
brn fsl, 2msbk
common mica

1.6

brn L, coarse
clay coatings
few mica

2.8

brn & red-yel
fsl, thick platy
many fine mica

5.3

yel-red & red-brn

fs, thin platy
many fine mica
m1p (dk brn)
moist

12.3

water
thick platy
brn & dk brn

54

0.8
dk brn to brn
fsl, 2fsbk
brn L, coarse
common mica

3.2

red, red-yel
thick platy
many mica

4.0

brn & yel-red
fs, thick platy
many fine mica

9

water

dk brn &
pinkish-grey
fs, many fine
mica
platy

52

dk brn fsl
brn fsl, 2fsbk
common mica

0.7

brn fsl, 2msbk
common fine mica

1.5

brn L
wk, coarse prismatic
msbk
few mica

3

brn & red-yel
fsl, thick platy
many fine mica

6

yel-brn
& yel-red fs
thick platy
many fine mica

7.5

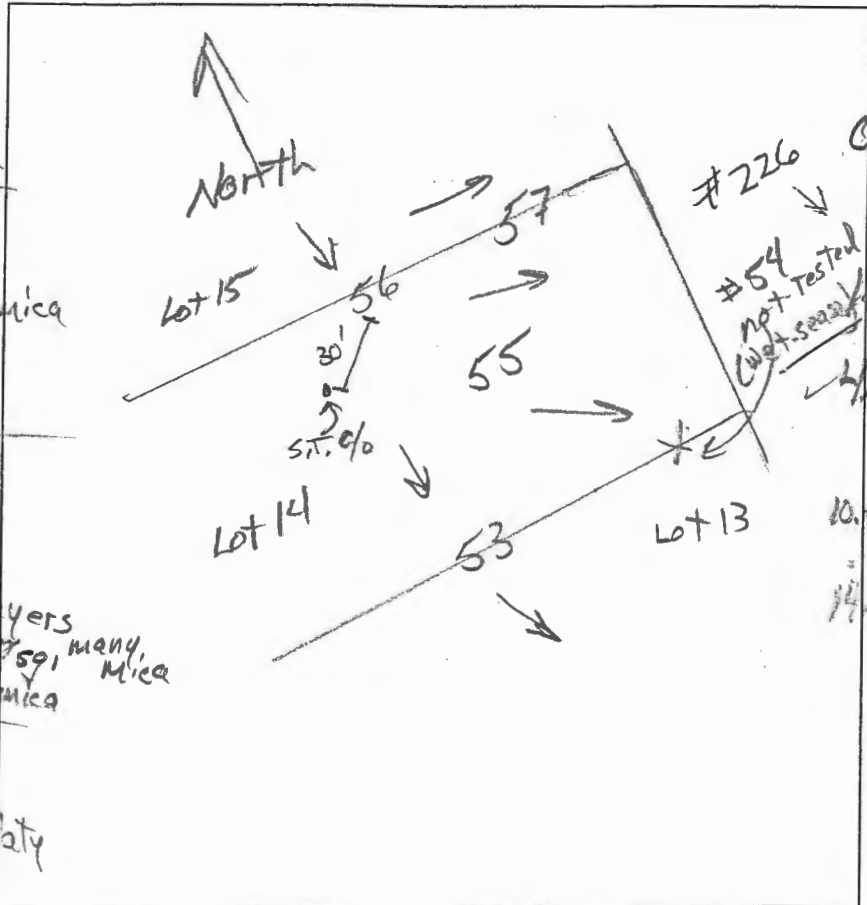
dk brn, red yel
& pinkish white
fs, thick
many mica
few channels

12

DATE	TEST #	DEPTH	START	BREAK 1" DROP	STOP 2" DROP	TIME OF 2ND INCH	P/F/H
3/19/15	50	7.3/23'	10:41	10:58	11:23	25	P
3/19/15	52	6.8/12'	10:48	10:52	11:01	9	P
3/19/15	54	5.1/9'	11:03	11:06	11:10	4	P

REMARKS _____
 SANITARIAN R Bicker BACKHOE Hatfield's OTHERS Art Leonard
 TEST HOLES USED IN SDA _____ AVG. PERC TIME _____ SQ. FT/BR _____
 TRENCH WIDTH _____ INLET DEPTH _____ MAX. BOT DEPTH _____ EFFECTIVE S/W _____

56
 dk brn L
 0.8' 2sg → 2ul sbk
 1.9' brn col, 1msbk
 2.1' yel-red col
 2msbk, few mica
 yel-red sl
 mod thin platy
 few mica
 2.3' H. brn lfs
 wk thin platy
 many mica
 3.5' alternating layers
 H. brn lfs, 1/2 sg, many mica
 2 red lfs, few mica
 9.9' brn ls, 1/2 sg
 many mica
 13' brn ls, thick platy
 mica ceous
 14'



55
 dk brn L, 1/2 sg
 red L, 1msbk
 0.7' yel-red sl
 wk thin platy
 common mica
 5.1' H. brn lfs
 many mica
 7.8' 1/2 sbk
 many mica
 11.3' brn ls
 many mica
 few channels
 remnant platy
 10.1' brn chls
 many mica
 14.2'

53
 dk brn L, 1/2 sg
 red L, 1/2 sbk
 1' com. mica
 1' H. brn & brn
 lfs, few mica
 2.1' 1/2 sbk
 4' brn lfs,
 medium platy
 nearly vertical
 micaceous
 7.5' H. grey s.
 1/2 sg. thick
 plates
 nearly vertical
 13.5' brn ls, many mica
 thick plates

DATE	TEST #	DEPTH	START	BREAK 1" DROP	STOP 2" DROP	TIME OF 2ND INCH	P/F/H
10/23/14	56	4.7' / 14'	9:44	9:46	9:49	3	P
10/23/14	53	4.5' / 13.5'	10:08	10:11	10:15	4	P
10/23/14	55	4.5' / 14.2'	10:25	10:26	10:28	2	P
10/23/14	57	5.5' / 14'	11:00	11:07	11:18	11	P

REMARKS _____
 SANITARIAN R. Bricker BACKHOE Atfield's (Dannie) OTHERS B. Rowe
 TEST HOLES USED IN SDA _____ AVG. PERC TIME _____ SQ. FT/BR _____
 TRENCH WIDTH _____ INLET DEPTH _____ MAX. BOT DEPTH _____ EFFECTIVE SW _____

lot 14

Lots 14 & 15



(24)
 dk brn sl
 1 fsbk
 0.7' brn fsl, 2 fsbk
 2.5' brn fsl, 2 msbk
 red chsl, dense
 thin platy
 5' red & lt brn
 lfs, few
 mica
 6' brn vchls
 platy 35% rock
 many mica
 pale brn chls
 13' om, many mica

(23)
 dk brn sl
 brn fsl, 2 fsbk
 brn chsl
 1 msbk
 1.9' yet red fsl
 om, dense
 3.5' lt. brn lfs
 om many
 mica
 some very
 coarse
 4.2' lt. brn & pale brn
 lfs, w/ medium
 platy
 many mica

(25)
 brn fsl, 1 fsbk
 1' brn fsl, 2 fsbk
 red brn fsl
 2 msbk to 1 msbk
 common mica

2.5' yet brn lfs
 om, many mica
 4' pale brn lfs
 w/ medium plate
 common mica, few channers

(21)
 dk brn sl, 1 fsbk
 0.8' brn fsl, 2 fsbk
 2' msbk
 1.7' brn lfs, 1 msbk
 common mica
 3' brn chls
 many mica
 1.7' red & brn chls
 medium platy
 common mica
 13'

(22)
 dk brn fsl, 1 fsbk
 0.4' brn fsl, 2 msbk
 1' to 1 msbk
 2' brn & pale brn
 lfs w/ thin platy
 few mica
 few channers
 3' pale brn lfs
 medium platy
 common mica
 few channers
 few flags at bottom

14' (offset 50' down hill from #22)
 brn fsl
 2.5' w/ki platy
 lt. brn lfs
 common mica
 ≤ 10% channers
 medium platy
 10'

DATE	TEST #	DEPTH	START	BREAK 1" DROP	STOP 2" DROP	TIME OF 2ND INCH	P/F/H
11/13/14	24	13'	Visual	5' to 8'	1.2 good	OK 1cr2	P
11/13/14	23	13'	Visual	3.5' to 8'	1.2 good	OK 1cr2	P
11/13/14	25	4 1/8'	1:33	1:35	1:38	3	P
11/13/14	21	4 1/8'	1:47	1:50	1:54	4	P
11/13/14	22	4 1/4'	1:58	2:00	2:03	3	P
11/13/14	22	offset 50'	10'	Visual	profile free of rock layers	OK	

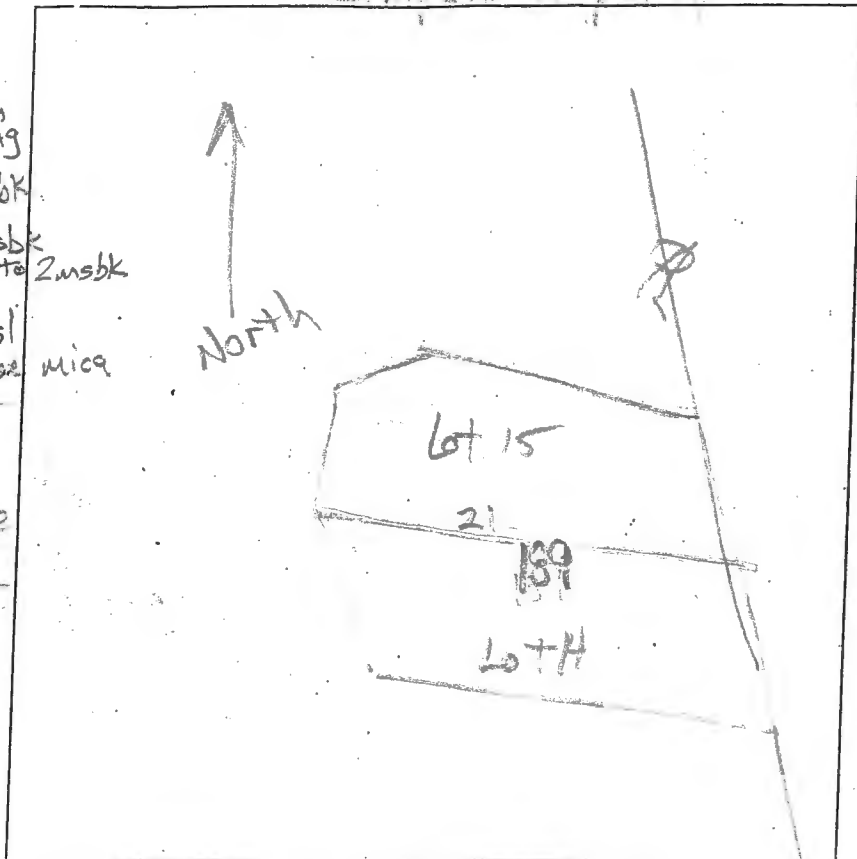
REMARKS
 SANITARIAN R. Bricker BACKHOE Hatfield OTHERS Art Leonard
 TEST HOLES USED IN SDA _____ AVG. PERC TIME _____ SQ. FT/BR _____
 TRENCH WIDTH _____ INLET DEPTH _____ MAX. BOT DEPTH _____ EFFECTIVE SW _____

Simpson Property

AP

189

0.5' yel-brn sl, 1fg
 yel-brn sl, 1 Rsbk
 yel-brn L, 1msbk
 few mica, ss to 2msbk
 1.8' yel-brn chsl
 common coarse mica
 3.8' 4. brn ls
 thick platy
 many coarse
 mica

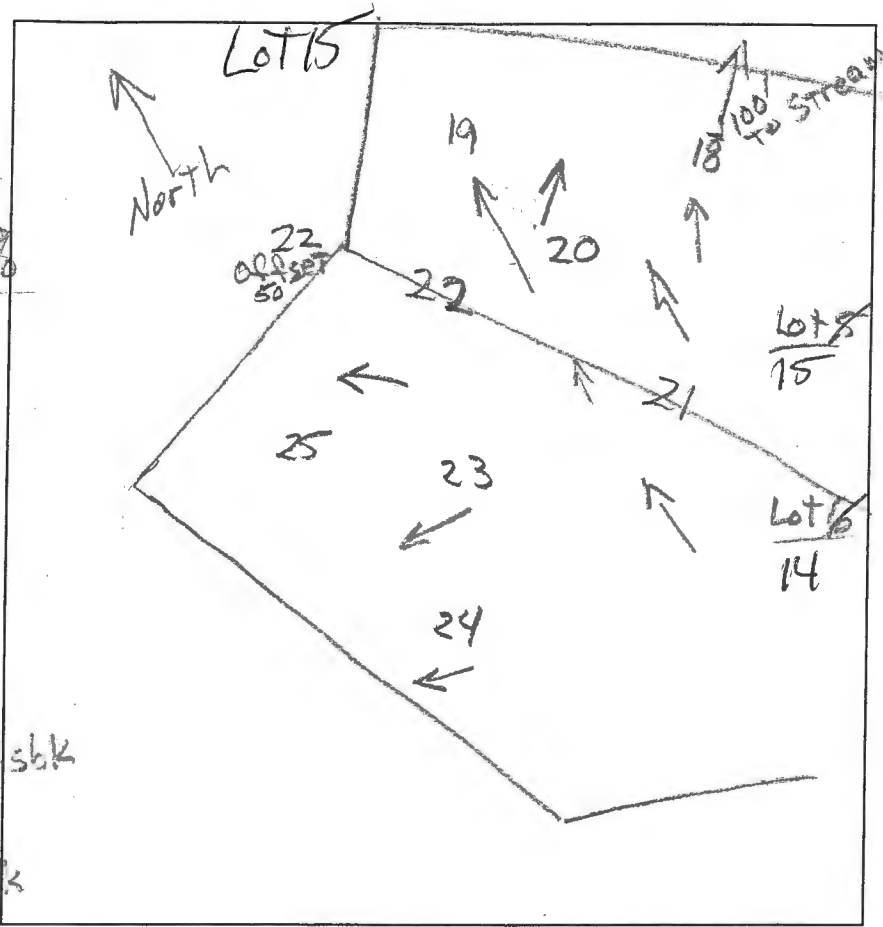


DATE	TEST #	DEPTH	START	BREAK 1" DROP	STOP 2" DROP	TIME OF 2ND INCH	P/F/H
7/2/15	189	5 1/2'	1:46	1:48	1:51	3	P

REMARKS _____
 SANITARIAN R. Bricker BACKHOE Hot Field's OTHERS Art Leonard
Donnie & Pedro
 TEST HOLES USED IN SDA _____ AVG. PERC TIME _____ SQ. FT/BR _____
 TRENCH WIDTH _____ INLET DEPTH _____ MAX. BOT DEPTH _____ EFFECTIVE SW _____

AVP

(20)
 0.4' dk brn sl
 1 f sbk
 11' brn vcls
 35' msbk 245-50%
 8' lt. brn ls
 ss, many
 fine & coarse
 mica
 13' lt. brn fls
 m, common
 mica



(19)
 0.5' dk brn fsl, 1 f sbk
 2' red-brn fsl
 2' msbk to 1 msbk
 2' brn & pale brn
 ls, common
 mica
 wk, medium
 platy
 6.5' chls
 12' medium platy
 common mica

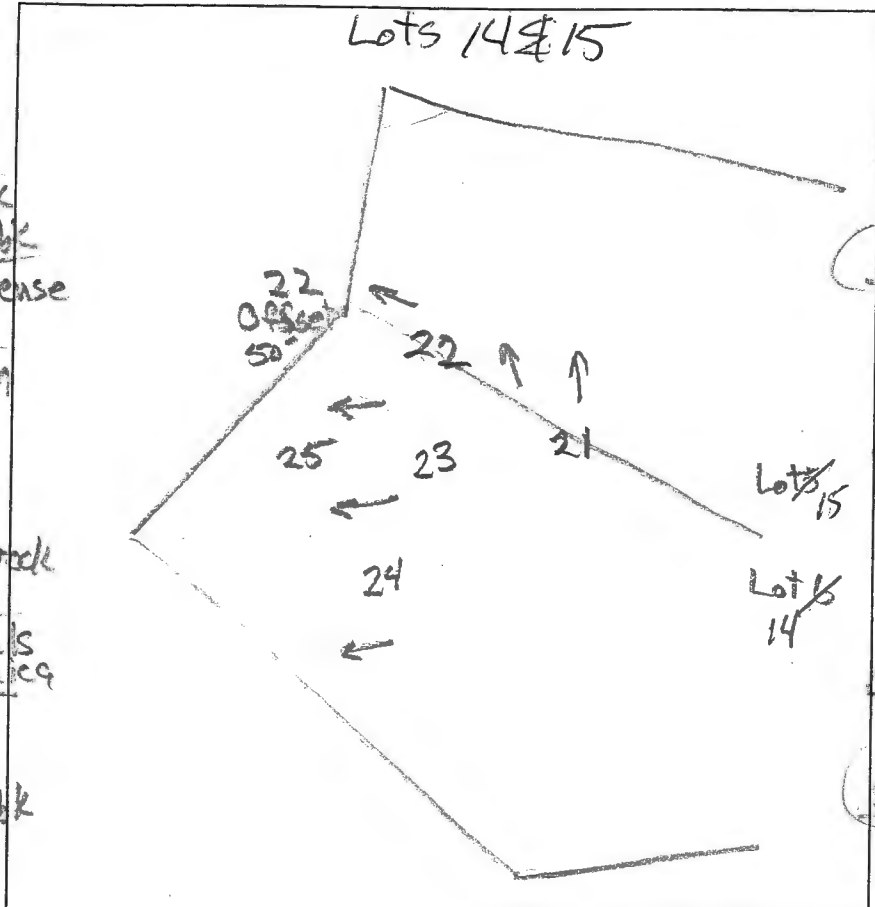
DATE	TEST #	DEPTH	START	BREAK 1" DROP	STOP 2" DROP	TIME OF 2ND INCH	P/F/H
11/13/14	20	5' / 13'	2:15	2:17	2:20	3	P
11/13/14	19	4' / 12'	2:25	2:27	2:29	2	P
11/13/14	18	35' / 13'	2:37	2:39	2:41	2	P

(18)
 0.5' brn fsl, 2 sbk
 few mica
 1.7' brn fsl, 2 msbk
 few mica
 2.7' lt. brn fsl
 2 sbk
 common mica
 7.5' lt. brn & pale brn
 11' ls, few
 coarse mica
 wk, medium
 platy
 11' grey brn ls
 medium platy, com. mica
 grey brn chls thick platy
 common mica

REMARKS
 SANITARIAN R. Bricker BACKHOE Hatfield's OTHERS Art Leonard
 TEST HOLES USED IN SDA Dannie AVG. PERC TIME _____ SQ. FT/BR _____
 TRENCH WIDTH _____ INLET DEPTH _____ MAX. BOT DEPTH _____ EFFECTIVE S/W _____

(Lot 5)

Lots 14 & 15



(24)
 dk brn sl
 1 fsbk
 0.7' brn fs, 2 fsbk
 2.5' brn fs, 2 msbk
 red chs, dense
 thin platy
 5' red & lt brn
 lfs, few mica
 6' brn chls
 platy 35% rock
 many mica
 pale brn chls
 13' om, many mica

(21)
 dk brn sl, 1 fs
 0.8' brn fs, 2 fsbk
 2' msbk common mica
 1.7' brn lfs, 1 msbk
 3' common mica
 brn chls thin platy
 many mica
 6.7' red & brn chls
 medium platy
 13' common mica

(23)
 dk brn sl
 brn fs, 2 fsbk
 brn chsl
 1 msbk
 1.9' yet red fs
 om, dense
 3.5' lt brn lfs
 om many mica
 some very coarse
 4.2' lt brn & pale brn
 lfs, w/ medium
 platy
 many mica

(22)
 dk brn fs, 1 fsbk
 0.4' brn fs, 2 msbk
 1' to 1 msbk few mica
 2' brn & pale brn
 lfs w/ thin platy
 few mica
 few channers
 3' pale brn lfs
 wk medium platy
 common mica
 few channers
 few flags at bottom

DATE	TEST #	DEPTH	START	BREAK 1" DROP	STOP 2" DROP	TIME OF 2ND INCH	P/F/H
11/13/14	24	13'	Visual	8" to 8"	1.2 good	OK per 2	P
11/13/14	23	13'	Visual	3.5" to 8"	1.2 good	OK per 2	P
11/13/14	25	4 1/2' / 13'	1:33	1:35	1:38	3	P
11/13/14	21	4 1/2' / 8'	1:47	1:50	1:54	4	P
11/13/14	22	4' / 14'	1:58	2:00	2:03	3	P
11/13/14	22	offset 50' / 10'	Visual	profile free of rock layers			OK

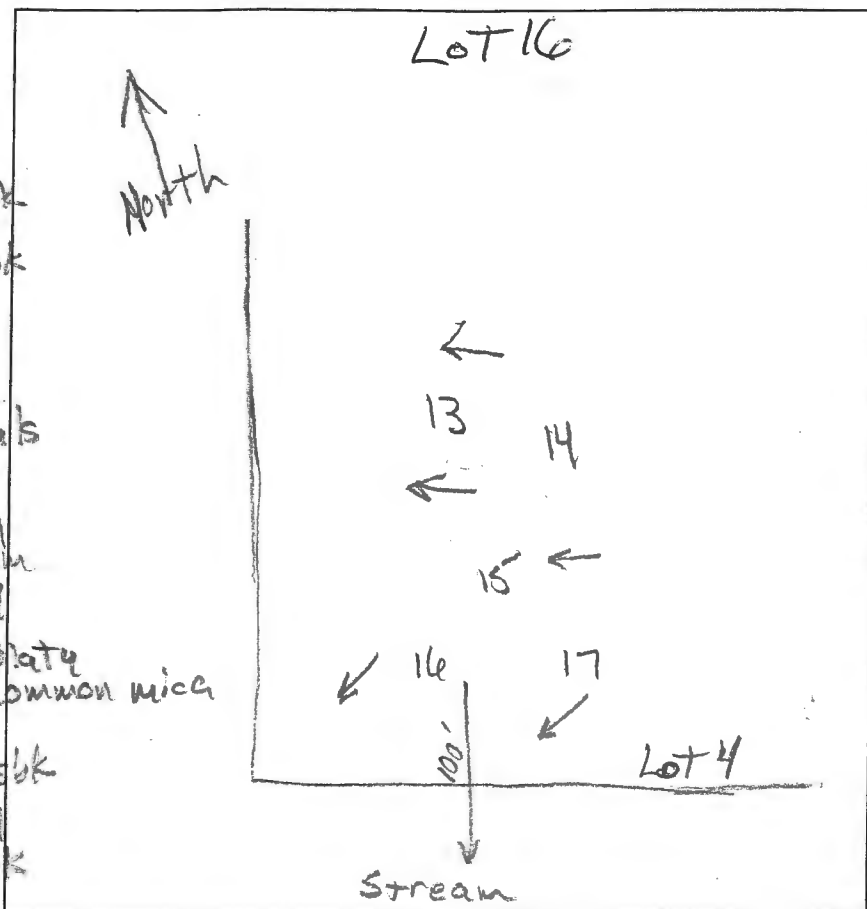
11' brn st lfs, om
 13' many mica
 (25)
 brn fs, 1 fsbk
 1' brn fs, 2 fsbk
 red brn fs
 2 msbk to 1 msbk
 common mica

14' offset 50'
 down hill
 from #22
 brn fs
 2.5' w/ platy
 lt brn lfs
 common mica
 < 10% channers
 medium platy
 10'

REMARKS
 SANITARIAN R. Bricker BACKHOE Hatfield OTHERS Art Leonard
 TEST HOLES USED IN SDA _____ AVG. PERC TIME _____ SQ. FT/BR _____
 TRENCH WIDTH _____ INLET DEPTH _____ MAX. BOT DEPTH _____ EFFECTIVE SW _____

25' yet brn lfs
 om, many mica
 4' pale brn lfs
 wk medium platy
 common mica, few channers

13'
 Lot 6



17
 0.9' dk brn sl
 1fsbk
 1/2' brn sl, 2msbk
 1.5' brn fs, 2msbk
 20' lt brn fs
 1' sm, dense
 25' yel-red vchls
 1' sm, dense
 6' red & grey ls, w/ medium platy
 11' manu mica
 14' lt. brn chls, platy
 common mica

16
 dk brn sl, 1fsbk
 vel-brn fs
 1/2' sbk to 2fsbk
 1' brn chls
 2msbk
 2.7' red-brn chls
 2msbk
 3' red-brn fs
 sm, dense
 3.5' red-brn vchls
 thin platy, mica
 4.5' pale red
 a pale brn ls
 sm few mica
 11' brn chls
 platy, coarse mica
 13.5'

15
 dk brn sl
 2fsbk
 1' lt. brn fs
 2msbk
 1' brn chls
 2fsbk
 1.5' yel-red sl
 4' 2fsbk,
 yel-red &
 pale brn ls
 w/ thin platy
 common mica
 13' green fs
 mica ls
 water

13
 dk brn sl
 lt. brn fs, 2fsbk
 2' brn fs, 2msbk
 2' brn vchls, sm
 dense
 3.4' red & brn
 vchls
 4.2' red & pale
 brn
 ls
 com. coarse mica
 few channers
 water
 sep
 grey f.!

14
 dk brn sl, 2fsbk
 1' brn fs, 2fsbk
 1.1' yel-red fs
 2.2' 2fsbk
 yel-red vchls
 sm dense
 3.2' red & pale brn
 ls
 many mica
 13.5'

DATE	TEST #	DEPTH	START	BREAK 1" DROP	STOP 2" DROP	TIME OF 2ND INCH	P/F/H
11/13/14	17	7.2' / 11.4'	2:59	3:03	3:12	9	P
11/13/14	16	5.5' / 13.5'	3:15	3:17	3:19	2	P
11/13/14	15	4.5' / 13'	3:29	3:31	3:33	2	P
11/13/14	13	4" / 12'	3:45	4:00	slow moving resbk		
	reshel	6" / 12'	4:01	4:11	4:24	13	P
11/13/14	14	4.4' / 13.5'	4:03	4:07	4:10	3	P

REMARKS _____
 SANITARIAN R. Bricker BACKHOE Hartfield's OTHERS AFT
 TEST HOLES USED IN SDA _____ AVG. PERC TIME 10 SQ. FT/BR 14
 TRENCH WIDTH _____ INLET DEPTH _____ MAX. BOT DEPTH _____ EFFECTIVE SW chls, sm
many mica

Lot 4

Lot 11a

A/P

(12)

dk brn L,

1 fsbk

lt. yel-brn L

2 fsbk

0.7'

brn L, 2msbk

1.1'

yel-red L

2msbk

2.4'

brn & yel-brn

sl. thin platy

many mica

(3)

red-yel & yel-brn

thin platy

many mica

1.5'

7.7'

yel-brn chls

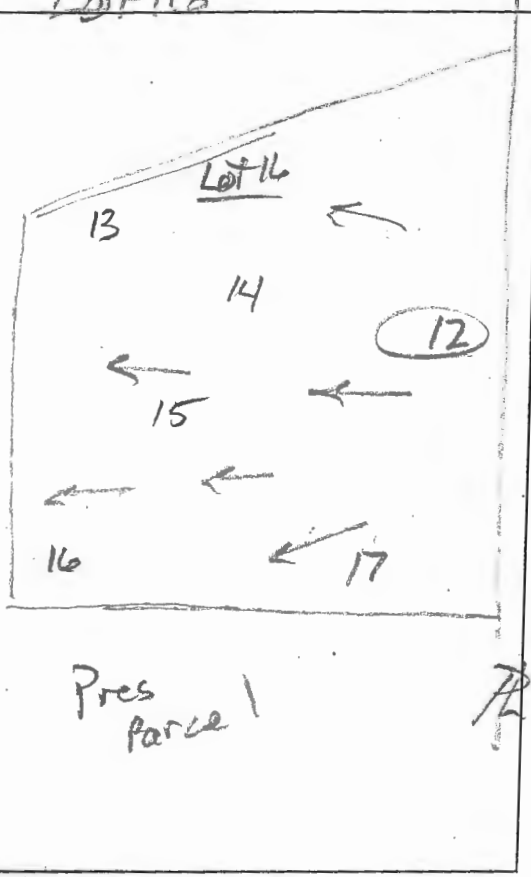
thick platy

common coarse mica

common fine mica

1.4'

North ↑



DATE	TEST #	DEPTH	START	BREAK 1" DROP	STOP 2" DROP	TIME OF 2ND INCH	P/F/H
3/9/5	12	4 1/4'	3:41	3:45	3:50	5	P

REMARKS _____
 SANITARIAN R. Bricker BACKHOE Hatfields OTHERS Art Leonard
 TEST HOLES USED IN SDA _____ AVG. PERC TIME _____ SQ. FT/BR _____
 TRENCH WIDTH _____ INLET DEPTH _____ MAX. BOT DEPTH _____ EFFECTIVE S/W _____