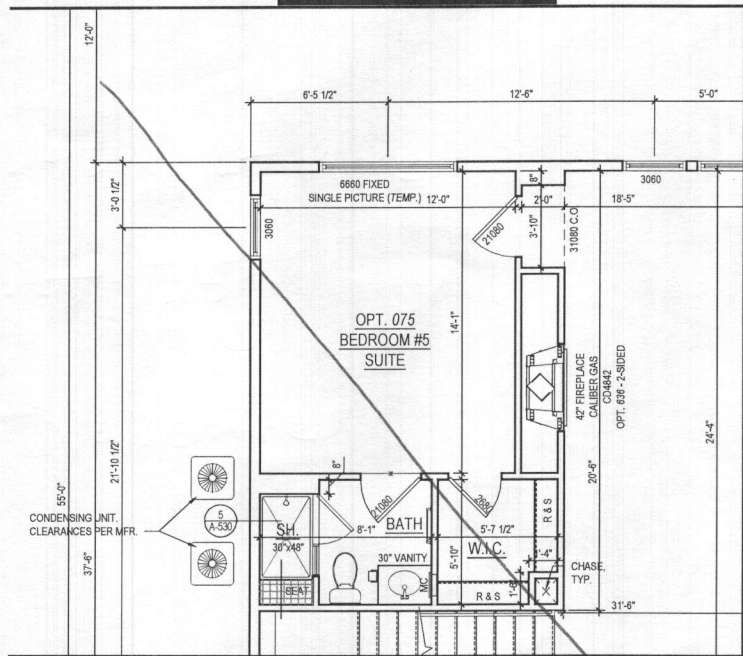
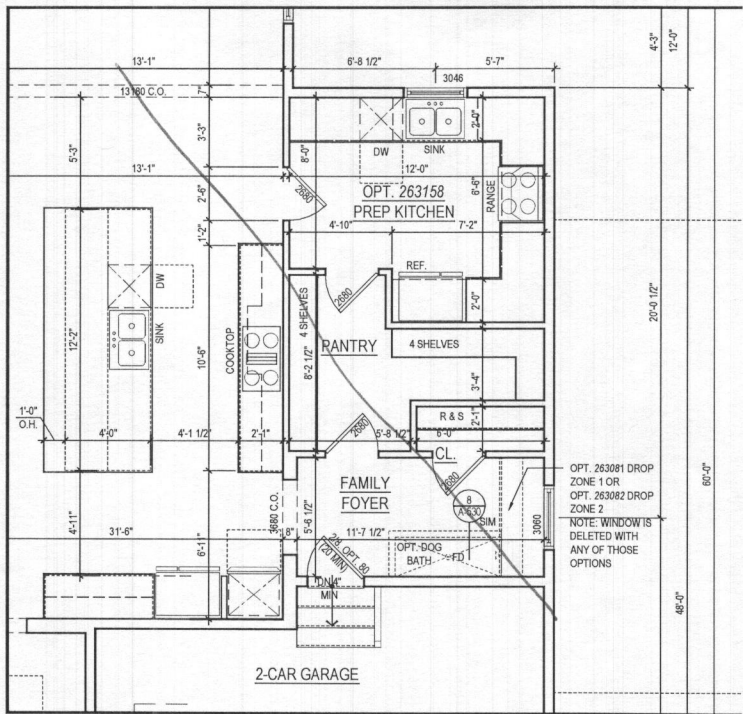




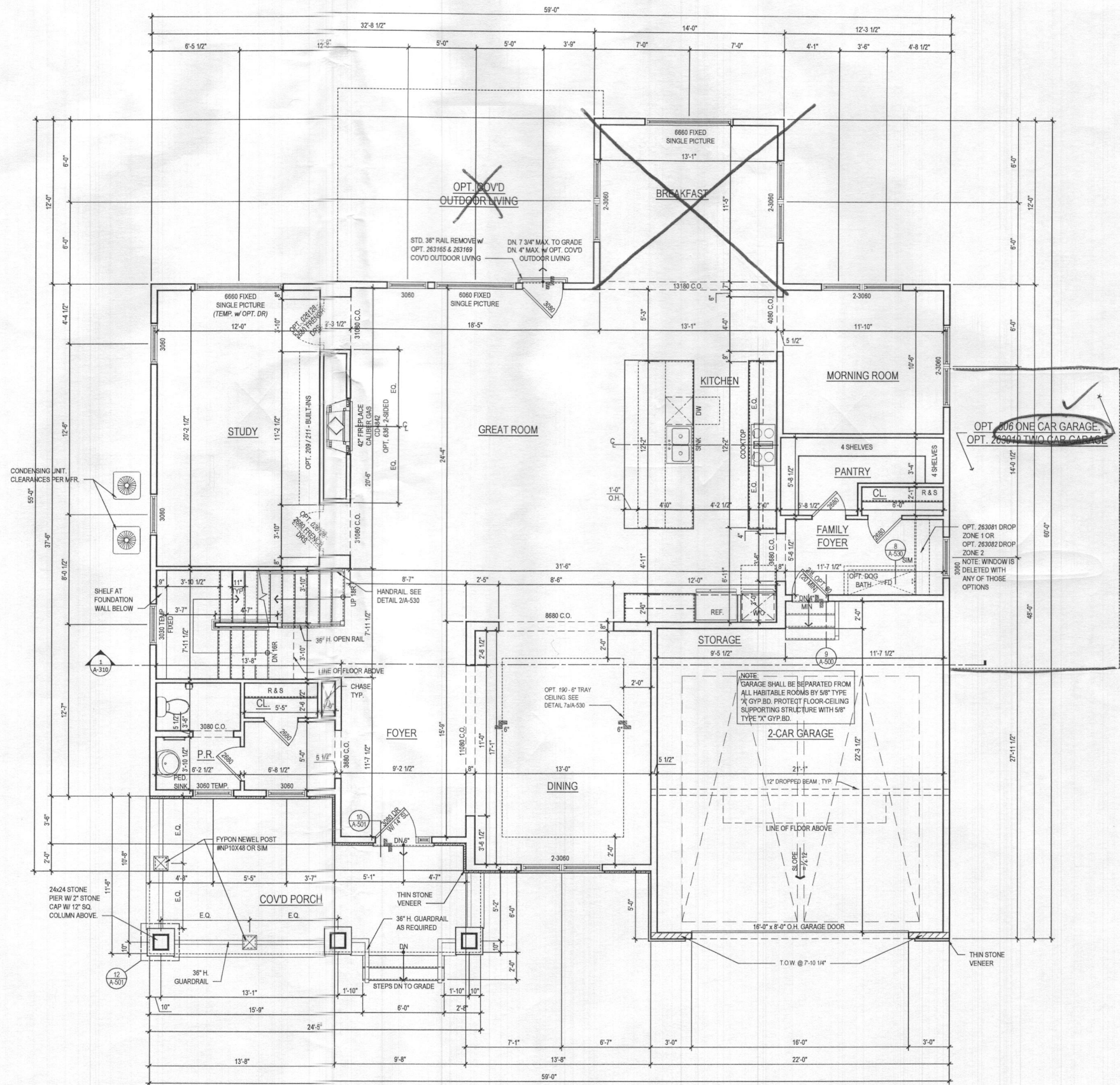
- GENERAL PLAN NOTES**
- A. ALL WOOD STUD PARTITIONS NOT DIMENSIONED ARE TO BE 3 1/2" FOR INTERIOR AND 5 1/2" FOR EXTERIOR WALLS UNLESS OTHERWISE NOTED.
  - B. ALL INTERIOR DIMENSIONS ARE TO FACE OF STUDS.
  - C. ALL EXTERIOR DIMENSIONS ARE TO FACE OF STUDS.
  - D. ALL DIMENSIONS GOVERN OVER SCALE.
  - E. ALL SMOKE DETECTORS ARE TO BE WIRED IN SUCH A MANNER THAT ACTIVATION OF ONE WILL ACTIVATE THEM ALL.
  - F. ENCLOSED ACCESSIBLE SPACE UNDER STAIRS SHALL HAVE WALLS AND SOFFITS PROTECTED ON ENCLOSED SIDE WITH 1/2" GYPSUM BOARD.
  - G. ALL WINDOWS SIZE ARE NOTED IN FEET + INCHES AS MEASURED FROM SASH TO SASH.
  - H. REFER TO ELEVATIONS FOR WINDOW HEAD HEIGHTS.
  - I. ALL DOORS ARE TO BE 6'-8" HIGH UNLESS OTHERWISE NOTED.
  - J. WASHER ALWAYS TO BE ON LEFT SIDE OF DRYER.
  - K. DISHWASHER ALWAYS TO BE ON RIGHT SIDE OF SINK.



**3 PART. FIRST FLOOR PLAN** w/ OPT. 075 BEDROOM #5 SUITE  
 A-110 SCALE: 1/4"=1'-0"  
 TOL081A\_A110.DWG



**2 PART. FIRST FLOOR PLAN** w/ OPT. 263158 PREP KITCHEN  
 A-110 SCALE: 1/4"=1'-0"  
 TOL081A\_A110.DWG



**1 FIRST FLOOR PLAN**  
 A-110 SCALE: 1/4"=1'-0"  
 TOL081A\_A110.DWG

@ ELEV. 1 - CRAFTSMAN *shown*  
 See add pages for "Fairview" elev.

ARCHITECT:

8521 Leesburg Pike  
 Suite 700 | Vienna, VA 22182  
 P: 571.830.1800 | F: 571.830.1801  
 www.lessarddesign.com

SEAL & SIGNATURE:

OWNER:

**TOLL BROTHERS**  
 7164 COLUMBIA GATEWAY DRIVE  
 COLUMBIA, MD 21046  
 P: 410.872.9105  
 CONTACT: MARK NOSAL  
 mnosal@tollbrothersinc.com

PROJECT NAME: **WILLOW CREEK**  
 HOWARD COUNTY, MD

SHEET TITLE: **RENWICK FLOOR PLANS**

ISSUE / REVISION		
NO.	DESCRIPTION	DATE
BID SET		08.19.19
PERMIT SET		09.16.19

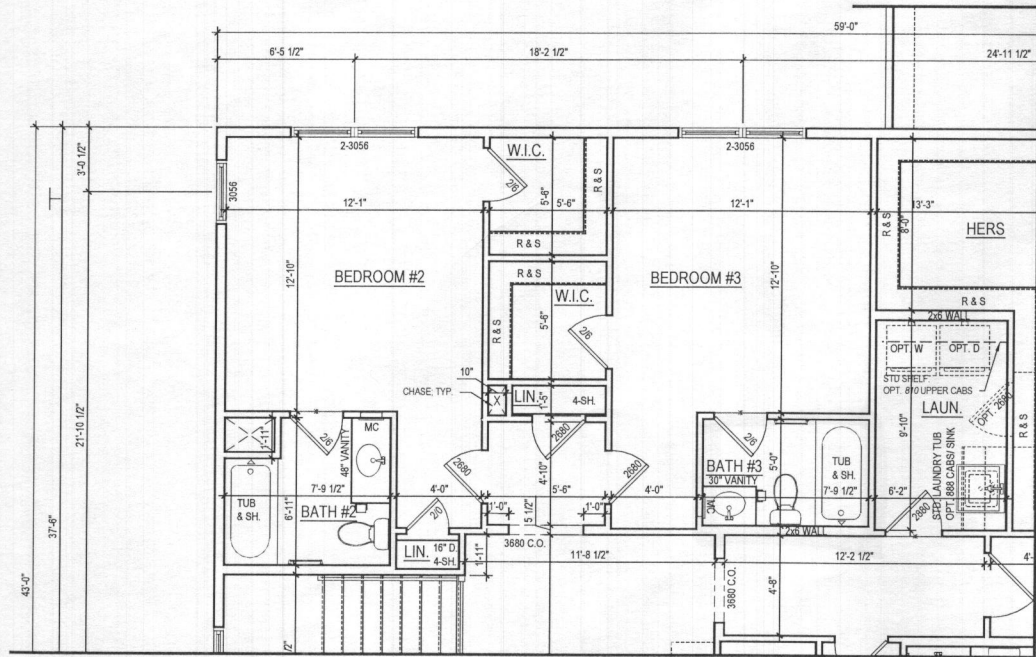
PROJECT No: TOL081A  
 DRAWN BY: AC/RB  
 CHECKED BY: JG  
 PLOT DATE: Sep. 13, 2019  
 FILE NAME: TOL081A\_A110.dwg

**A-110**

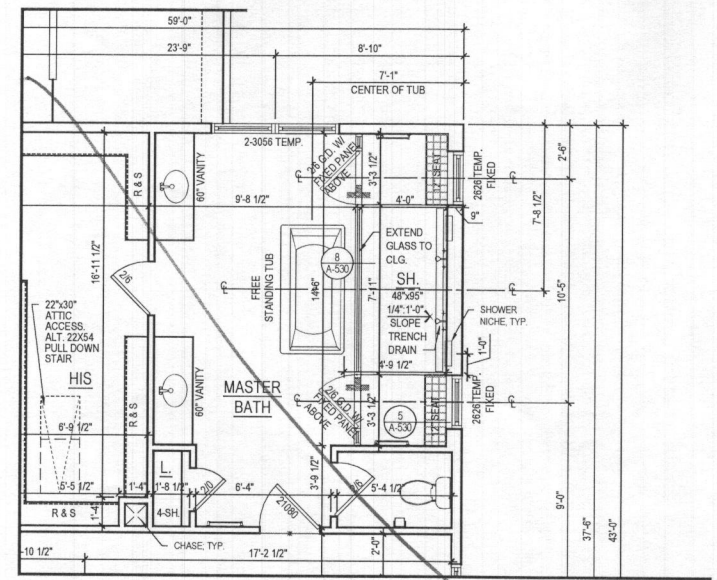
Plot By: snak

©2019 LESSARD DESIGN, INC. EXPRESSLY RESERVES ITS CONSTRUCTION RIGHTS IN THESE PLANS. THESE PLANS ARE NOT TO BE REPRODUCED, COPIED OR ANY PART OR WATER MARKED, NOR ARE THEY TO BE ASSIGNED TO ANY THIRD PARTY, WITHOUT FIRST OBTAINING THE EXPRESS WRITTEN PERMISSION AND CONSENT OF LESSARD DESIGN, INC.

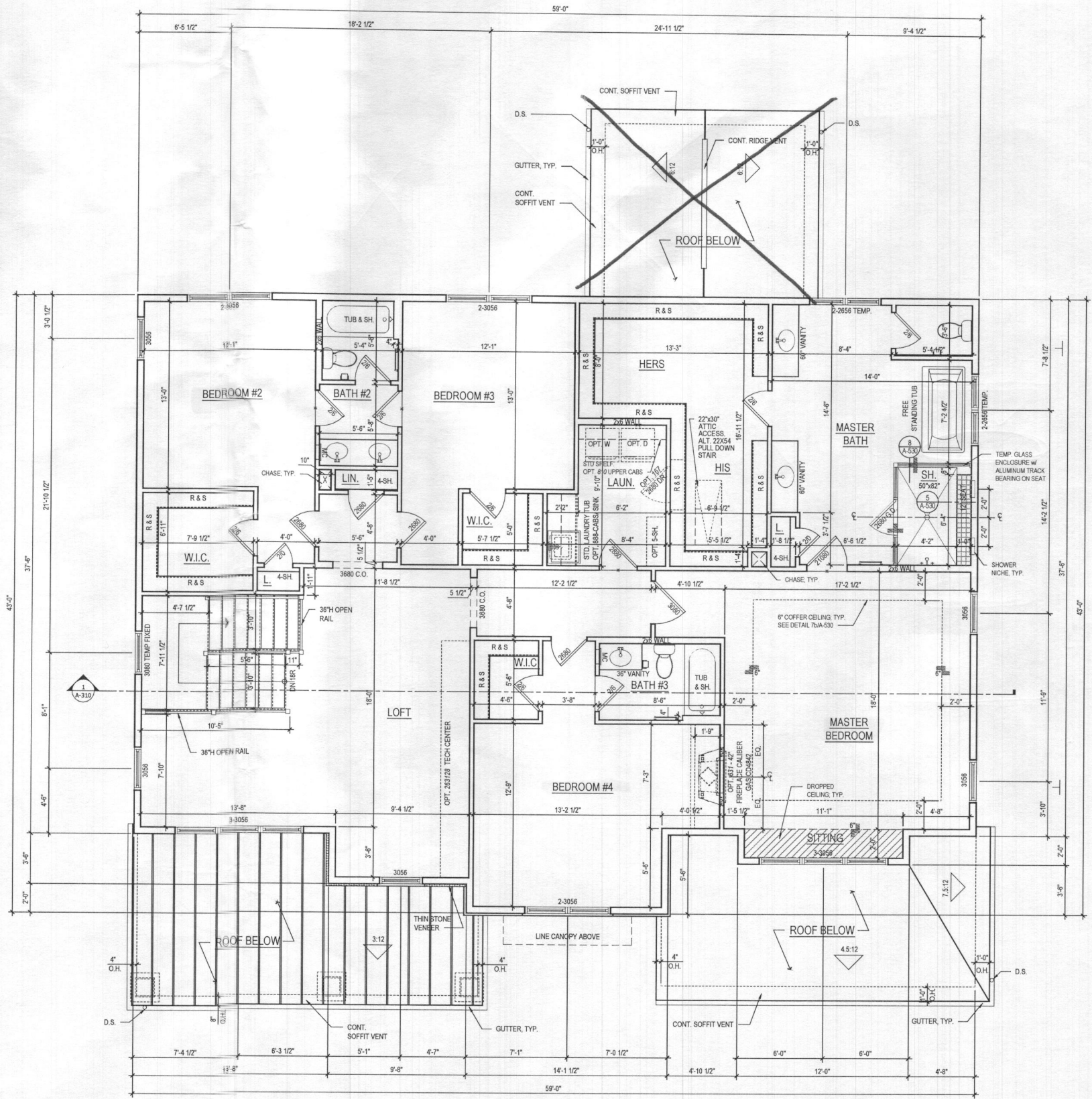
- GENERAL PLAN NOTES**
- A. ALL WOOD STUD PARTITIONS NOT DIMENSIONED ARE TO BE 3 1/2" FOR INTERIOR AND 5 1/2" FOR EXTERIOR WALLS UNLESS OTHERWISE NOTED.
  - B. ALL INTERIOR DIMENSIONS ARE TO FACE OF STUDS.
  - C. ALL EXTERIOR DIMENSIONS ARE TO FACE OF STUDS.
  - D. ALL DIMENSIONS GOVERN OVER SCALE.
  - E. ALL SMOKE DETECTORS ARE TO BE WIRED IN SUCH A MANNER THAT ACTIVATION OF ONE WILL ACTIVATE THEM ALL.
  - F. ENCLOSED ACCESSIBLE SPACE UNDER STAIRS SHALL HAVE WALLS AND SOFFITS PROTECTED ON ENCLOSED SIDE WITH 1/2" GYPSUM BOARD.
  - G. ALL WINDOWS SIZE ARE NOTED IN FEET + INCHES AS MEASURED FROM SASH TO SASH.
  - H. REFER TO ELEVATIONS FOR WINDOW HEAD HEIGHTS.
  - I. ALL DOORS ARE TO BE 6'-8" HIGH UNLESS OTHERWISE NOTED.
  - J. WASHER ALWAYS TO BE ON LEFT SIDE OF DRYER.
  - K. DISHWASHER ALWAYS TO BE ON RIGHT SIDE OF SINK.



**2 ALT. SECOND FLOOR PLAN**  
 A-120 SCALE: 1/4"=1'-0"  
 W/ OPT. 367 - BATHROOM #3  
 TOLUBIA, A120.DWG



**3 PART. SECOND FLOOR PLAN**  
 A-120 SCALE: 1/4"=1'-0"  
 W/ OPT. 055 - LUXURY MASTER BATH  
 TOLUBIA, A120.DWG



**1 SECOND FLOOR PLAN**  
 A-120 SCALE: 1/4"=1'-0"  
 @ ELEV. 1 - CRAFTSMAN *Shawn*  
 See add pages for "fairview" elev

ARCHITECT:

lessard  
DESIGN

8521 Leesburg Pike  
 Suite 700 | Vienna, VA 22182  
 P: 571.830.1800 | F: 571.830.1801  
 www.lessarddesign.com

SEAL & SIGNATURE:

OWNER:

**TOLL BROTHERS**  
 7164 COLUMBIA GATEWAY DRIVE  
 COLUMBIA, MD 21046  
 P: 410.872.9105  
 CONTACT: MARK NOSAL  
 mnosal@tollbrothersinc.com

**EXECUTIVE SERIES**

WILLOW CREEK  
 HOWARD COUNTY, MD

**RENWICK  
 FLOOR PLANS**

PROJECT NAME: SHEET TITLE:

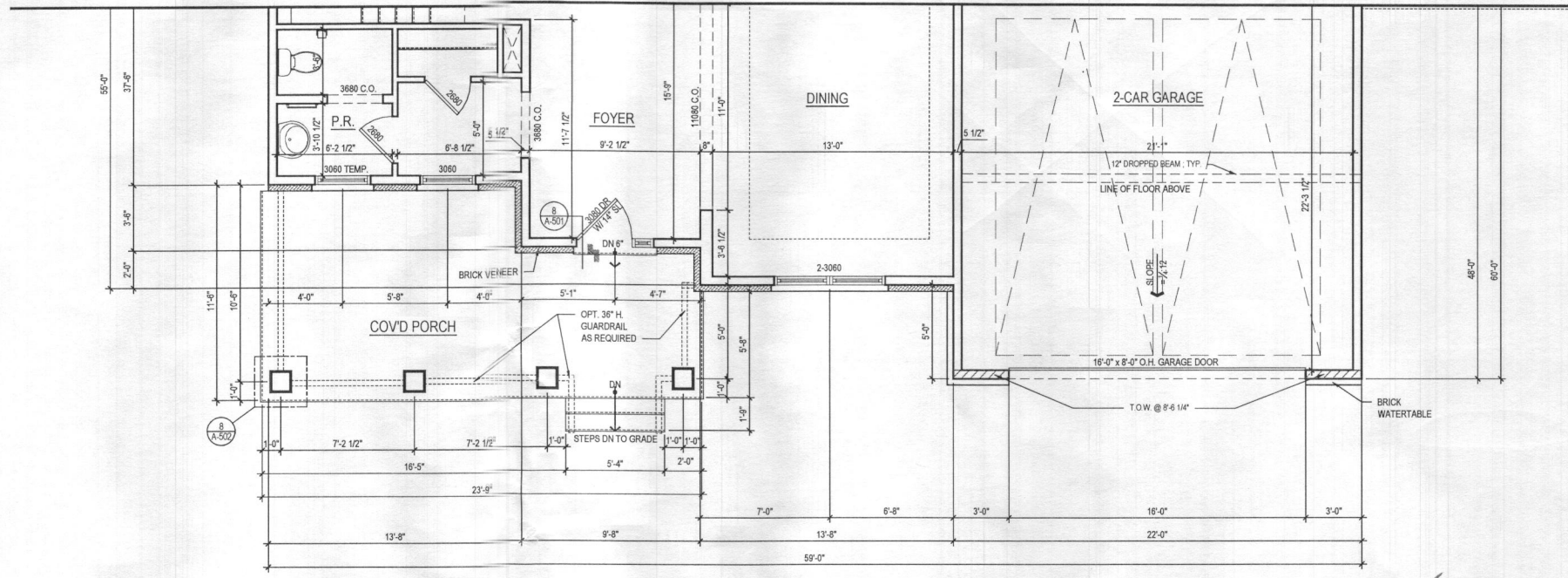
ISSUE / REVISION		
NO.	DESCRIPTION	DATE
BID SET		08.19.19
PERMIT SET		09.16.19

PROJECT NO: TOL 081a  
 DRAWN BY: AC/RN  
 CHECKED BY: AP  
 PLOT DATE: Sep. 13, 2019  
 FILE NAME: TOL081a\_A120.dwg

**A-120**

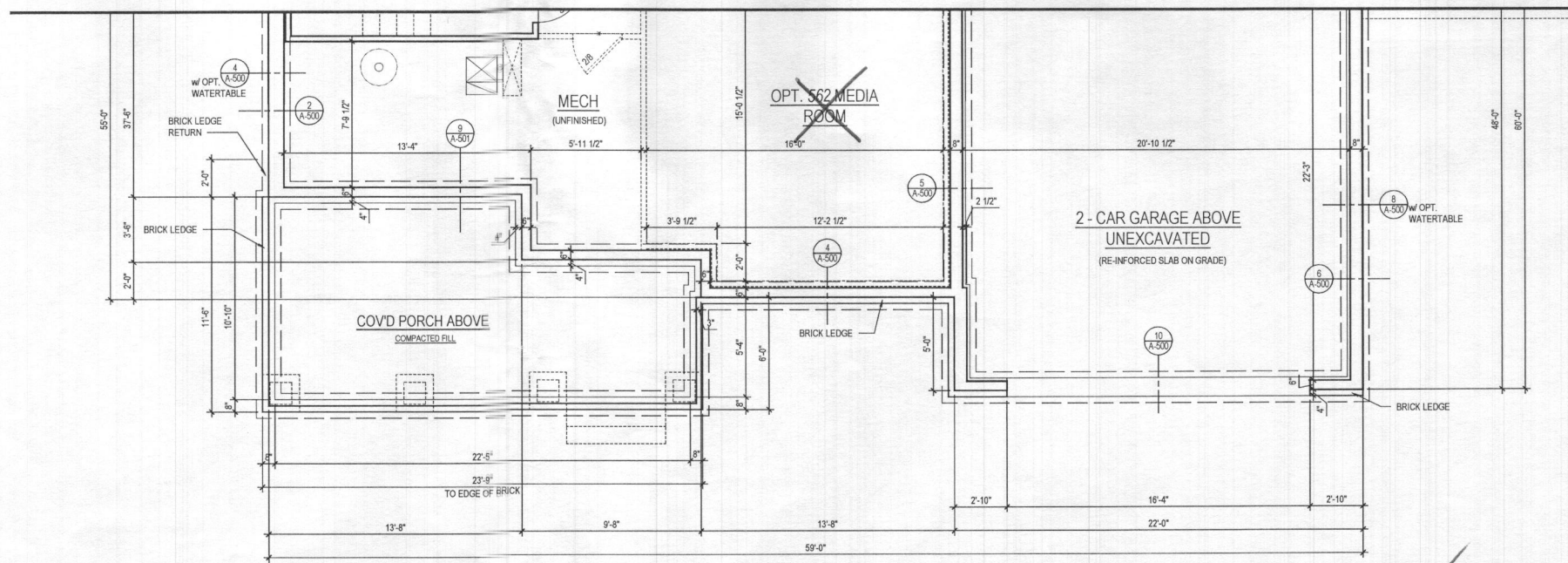
File No: TOL081a\_A120.dwg  
 Plot By: amalk

- GENERAL PLAN NOTES**
- A. ALL WOOD STUD PARTITIONS NOT DIMENSIONED ARE TO BE 3 1/2" FOR INTERIOR AND 3 1/2" FOR EXTERIOR WALLS UNLESS OTHERWISE NOTED.
  - B. ALL INTERIOR DIMENSIONS ARE TO FACE OF STUDS.
  - C. ALL EXTERIOR DIMENSIONS ARE TO FACE OF STUDS.
  - D. ALL DIMENSIONS GOVERN OVER SCALE.
  - E. ALL SMOKE DETECTORS ARE TO BE WIRED IN SUCH A MANNER THAT ACTIVATION OF ONE WILL ACTIVATE THEM ALL.
  - F. ENCLOSED ACCESSIBLE SPACE UNDER STAIRS SHALL HAVE WALLS AND SOFFITS PROTECTED ON ENCLOSED SIDE WITH 1/2" GYPSUM BOARD.
  - G. ALL WINDOWS SIZE ARE NOTED IN FEET + INCHES AS MEASURED FROM SASH TO SASH.
  - H. REFER TO ELEVATIONS FOR WINDOW HEAD HEIGHTS.
  - I. ALL DOORS ARE TO BE 6'-8" HIGH UNLESS OTHERWISE NOTED.
  - J. WASHER ALWAYS TO BE ON LEFT SIDE OF DRYER.
  - K. DISHWASHER ALWAYS TO BE ON RIGHT SIDE OF SINK.



**2 FIRST FLOOR PLAN**  
A-170 SCALE: 1/4"=1'-0"  
TOL081a\_A170.dwg

@ ELEV. 5 - FAIRVIEW



**1 BASEMENT PLAN**  
A-170 SCALE: 1/4"=1'-0"  
TOL081a\_A170.dwg

@ ELEV. 5 - FAIRVIEW

ARCHITECT:

8521 Leesburg Pike  
Suite 700 | Vienna, VA 22182  
P: 571.830.1800 | F: 571.830.1801  
www.lessarddesign.com

SEAL & SIGNATURE:

OWNER:

**TOLL BROTHERS**  
7164 COLUMBIA GATEWAY DRIVE  
COLUMBIA, MD 21046  
P: 410.872.9105  
CONTACT: MARK NOSAL  
mnosal@tollbrothersinc.com

PROJECT NAME:  
WILLOW CREEK  
HOWARD COUNTY, MD

SHEET TITLE:  
RENWICK  
FLOOR PLANS

ISSUE / REVISION		
NO.	DESCRIPTION	DATE
BID SET		08.19.19
PERMIT SET		09.16.19

PROJECT NO: TOL081a  
DRAWN BY: AC/RA  
CHECKED BY: AP  
PLOT DATE: Sep. 13, 2019  
FILE NAME: TOL081a\_A170.dwg

**A-170**

