

125
 dk brn fsl
 2 fsl
 0.7' yel-red fsl
 2' msbk
 6.4' brn fsl
 many mica
 2' yel-red fsl
 dense
 4.8' brn & pale brn
 fsl many mica
 9' brn chls, thin platy
 125' 2' 2' rock flag

126
 grey-brn
 fsl, 2 fsl
 1 to 2' msbk
 2.7' yel-red fsl
 2' msbk, ss
 2' yellow fsl
 within platy
 3' 2d (blk)
 3' red-yellow
 11' grey-brn
 fsl, thick
 near platy
 vertical
 13d (blk)
 11' grey-brn
 v flls thick
 platy
 13'

127
 dk brn fsl
 2 fsl
 0.4' brn fsl
 2' msbk to 2 fsl
 6.7' brn & pale brn
 fsl 1' msbk
 2.5' com. new mica
 3' brn fsl, dense
 yellow, brn
 & pale brn
 fsl, dense
 9.5' grey-brn
 chls, many
 mica
 13.5'

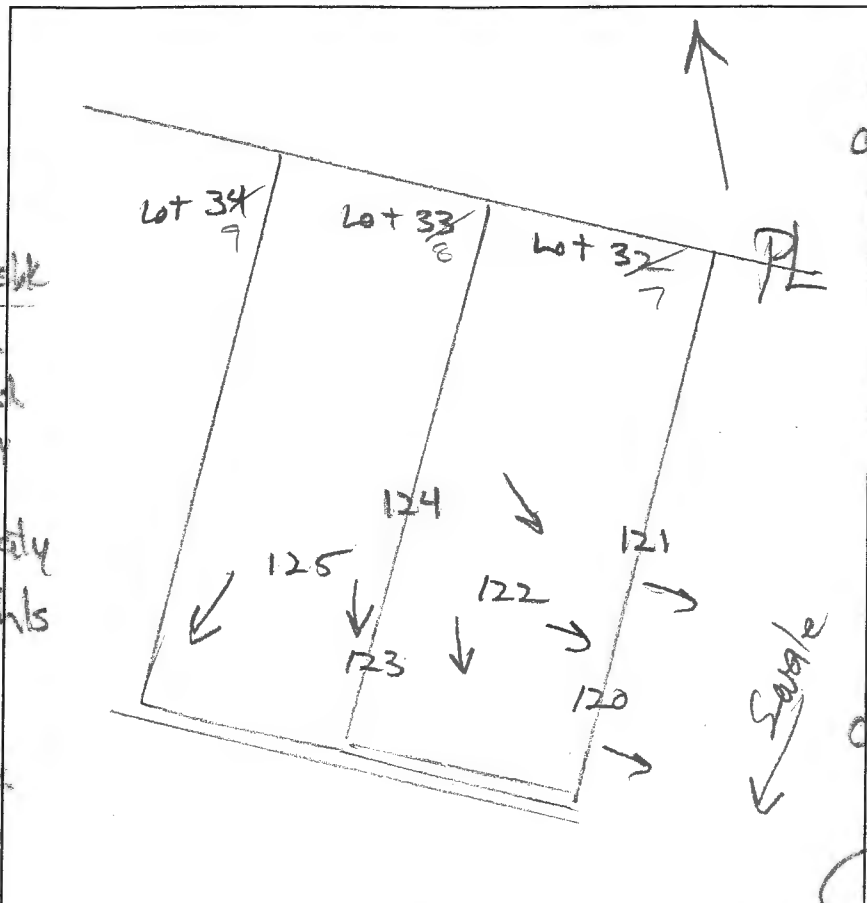
DATE	TEST #	DEPTH	START	BREAK 1" DROP	STOP 2" DROP	TIME OF 2ND INCH	P/F/H
11/7/14	125	5.3 / 12.5	1:23	1:25	1:28	3	P
11/7/14	127	4.1 / 13.5	1:35	1:38	13:43	5	P
11/7/14	126	5.1 / 11'	0	1.5	5.5	4	P

REMARKS _____
 SANITARIAN R Bricker BACKHOE Hatfield's (Dannie) Art Leonard OTHERS _____
 TEST HOLES USED IN SDA _____ AVG. PERC TIME _____ SQ. FT/BR _____
 TRENCH WIDTH _____ INLET DEPTH _____ MAX. BOT DEPTH _____ EFFECTIVE S/W _____

121
 dk brn L
 2fg to 2fsbk
 0.7
 brn L
 2msbk to 1msbk
 2.2
 brn fsL, 2m
 3
 pale brn to yel-red
 10s, thin platy
 4
 brn lfs
 wk, medium platy
 7.5
 grey-brn chls
 14.5

120
 brn L 2msbk
 1 to 2fsbk
 1
 brn vch to
 micaceous
 thin platy
 1.5
 yellow, red
 pale brn lfs
 2m few mica
 3.1
 yel-red & pale brn
 lfs, many mica
 few channers
 9.5
 brn chls
 13.3

122
 dk brn L
 2fg to 2fsbk
 0.6
 brn L, 2msbk
 1.8
 brn fsL, 1msbk
 few mica
 2.4
 red & h. brn
 chls
 3.7
 red & pale brn
 lfs, many mica
 7.5
 brn & grey-brn
 chls, many mica
 14



124
 dk brn fsL
 2fg to 2fsbk
 0.8
 brn fsL
 medium platy
 2.3
 yel-red
 pale brn
 lfs, many mica
 wk medium platy
 7.5
 brn chls
 10.5
 brn vchls
 12
 35-40% rock

123
 dk brn L
 2fg to 2fsbk
 0.7
 brn fsL
 fsbk, ss
 2d (bls)
 2
 yel-brn chls
 2.6
 yel-red
 pale brn lfs
 many mica
 7
 yel-red &
 brn vchls
 11
 35% channers
 13.5

DATE	TEST #	DEPTH	START	BREAK 1" DROP	STOP 2" DROP	TIME OF 2ND INCH	P/F/H
11/2/14	121	4' / 14.5'	12:44	12:46	12:50	4	P
11/7/14	120	13.3'	Visual	Sidewall	1.5-2	1	P
11/7/14	122	14'	Visual	Sidewall	2.4-8	1.2	P
11/7/14	124	4.3' / 13.5'	12:55	12:57	1:00	3	P
11/7/14	123	3.8' / 13.5'	1:13	1:16	1:21	5	P

REMARKS _____
 SANITARIAN R Bricker BACKHOE Hatfield's (Donnie) OTHERS Art Leonard
 TEST HOLES USED IN SDA _____ AVG. PERC TIME _____ SQ. FT/BR _____
 TRENCH WIDTH _____ INLET DEPTH _____ MAX. BOT DEPTH _____ EFFECTIVE SW _____

Lot 32

