

Bureau of Environmental Health

8930 Stanford Boulevard, Columbia, MD 21045

Main: 410-313-2640 | Fax: 410-313-2648

TDD 410-313-2323 | Toll Free 1-866-313-6300

www.hchealth.org

Facebook: www.facebook.com/hocohealth

Twitter: HowardCoHealthDep

Maura J. Rogssman, M.D., Health Officer

SEWAGE DISPOSAL SYSTEM SPECIFICATIONS WORKSHEET

Address: _____

Subdivision: Simpson & Renault Properties Lot: 44

204 Initial system: Application rate: 1.2 Effective area beginning depth: 3.5 Bottom maximum depth: 0

206 1st Replacement: Application rate: 1.2 Effective area beginning depth: 3.5 Bottom maximum depth: 0

207 2nd Replacement: Application rate: 0.8 Effective area beginning depth: 1 Bottom maximum depth: 3

Design Flow = 150 gallons per day per bedroom

Design flow + application rate = square footage of drainfield required

Linear length of trench required = drainfield square footage x sidewall reduction percentage ÷ trench width

Sidewall reduction credit formula:

$$\frac{W+2}{W+1+2D} \times 100 = \text{Percent of length of standard trench where } W=\text{trench width and } D=\text{depth between effective area beginning depth and trench bottom.}$$

Standard design requirements:

- All trenches must be equal length unless low pressure dosed
- All trenches must be on contour
- Minimum trench spacing: 10' for all trenches utilizing sidewall reduction credit. Additional spacing may be necessary for any trench using over 3.5' of effective sidewall. In those cases, the spacing formula is 2D +W up to a maximum spacing of 18'.
- Minimum trench spacing for trenches with no sidewall credit (bottom area only) is 6' for a 2' wide trench and 9' for a 3' wide trench (spacing is measured edge to edge)
- Maximum trench length is 100'
- Maximum pipe depth is 4'

Additional requirements:

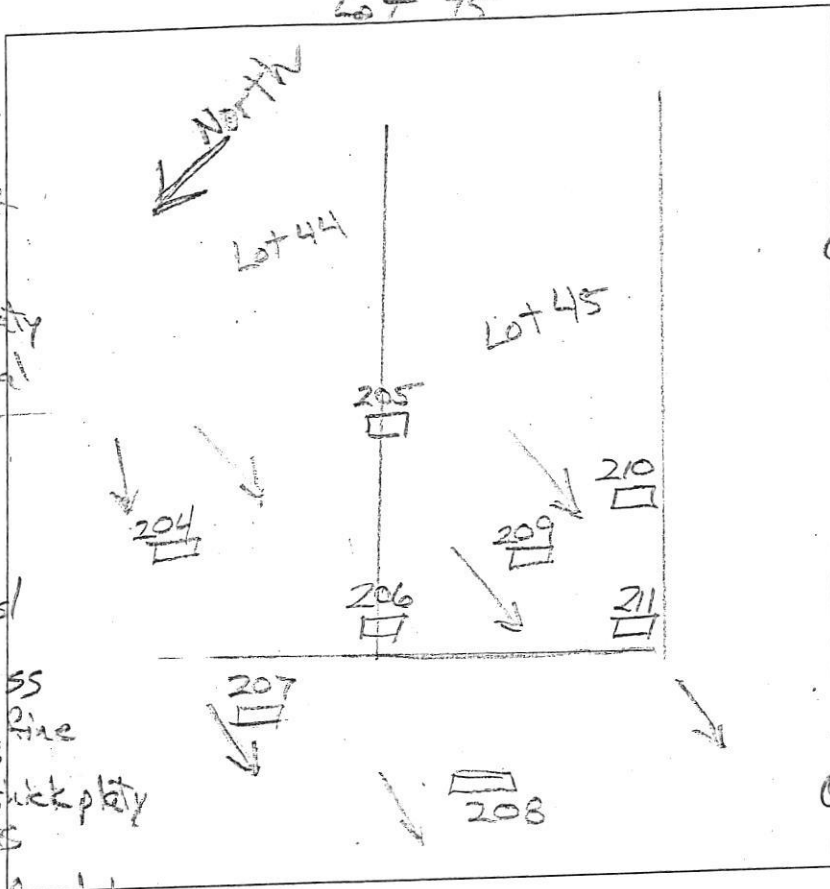
Field run 1' contours required for lower SDA on OSDS Plan.

Approved: R. Bricker

Date: 2/13/2018

Lot 45

AVP



207

0.6' dk red-brn sl, 2 f sbk
 yet-red & red-yel ls, thick platy
 few mica
 water

208

0.2' dk red-brn sl
 1' gr
 0.2' red-brn L, ss
 2 f sbk, many fine roots
 0.6' red-brn sl, thick platy
 2' few fine roots
 yet-red & red-yel ls
 thick platy, clay skins on plate surface

211

0.4' dk brn L
 2 f sbk, ss
 red-brn L
 2 f sbk, ss
 few mica
 0.8' yet-red sl
 thick platy
 1.5' yet-red & red-yel ls, thick platy
 few mica
 9' water

210

0.5' dk brn L, 2 f sbk
 brn sl, 1 f sbk
 common mica
 yet-red sl
 1 f sbk, many mica
 2' red-yel & yet-red
 & yet-brn ls, thick platy
 13' water

209

0.5' dk brn L
 2 f sbk, mica
 yet-red L
 2 f sbk
 3 f sbk
 yet-red sl
 thick platy
 many mica

35

yet-red & brn ls, thick platy
 many mica
 saturated ls
 thick platy
 water

DATE	TEST #	DEPTH	START	BREAK 1" DROP	STOP 2" DROP	TIME OF 2ND INCH	P/F/H
3/3/16	207	3 7/8'	12:02	12:08	12:14	6	P
3/3/16	208	4 8/8'	12:13	12:39	1:09	730	F
3/3/16	211	4 9/8'	12:40	12:46	12:53	7	P
3/3/16	210	3 8/13'	12:56	1:02	1:10	8	P
3/3/16	209	5 1/14'	1:20	1:23	1:26	3	P
3/3/16	206	6 1/12'	1:28	1:32	1:37	5	P

REMARKS
 SANITARIAN R. Bricker BACKHOE Hot Fields OTHERS _____
 TEST HOLES USED IN SDA S. Collins AVG. PERC TIME _____ SQ. FT/BR _____
 TRENCH WIDTH _____ INLET DEPTH _____ MAX. BOT DEPTH _____ EFFECTIVE SAW _____

* >50% consolidated rock
 9' water

Lots 40, 41 & 45

A/P

307

dk brn L 3/4 sbsk
few mica
brn L 2/3 sbsk
few mica

dk brn L 2/3 sbsk
common mica

yel-red cl. ss
2/3 sbsk, common mica
10% cobbles & stones

yel-red cbl.
1/3 sbsk common mica

5.5-5.8

dk brn L 2/3 sbsk
many fine roots
green weeds
stony

305

brn L 2/3 sbsk

0.3

yel-red sbsk
2/3 sbsk
many fine mica

1.8

yel-red
1/2 thick platy
many f. & v.f. mica

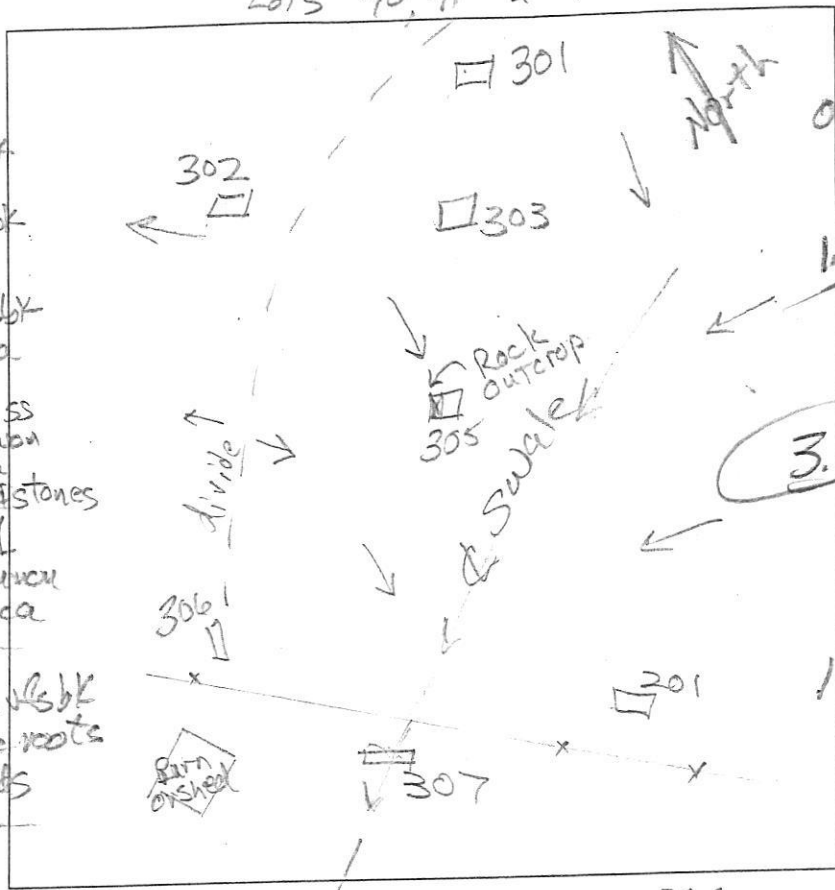
10.5

grey brn
& red-yel
1/2 thick platy, many mica

failed sidewalk

NW end of hole
is rocky
& laggy

to water



206

dk brn L
2/3 sbsk
brn sbsk
common mica

1.5
yel-red sbsk
thick platy
many fine
& v.f. mica

3.3

yel-red
& red-yel

1/2 thick platy
many mica

12' water

302

dk brn L
2/3 sbsk

0.4

brn sbsk
to yel-red sbsk
1/2 sbsk
many fine mica

1.8

yel-red & brn
1/2 thick platy
many f. & v.f. mica
few channels

13

DATE	TEST #	DEPTH	START	BREAK 1" DROP	STOP 2" DROP	TIME OF 2ND INCH	P/F/H	
3/3/16	307	5.2/16.5	11:27	11:34			F	
3/3/16	307	5.5	Visual		top of and fill water		F	
			location appears to have been dug to topography is poor					
3/3/16	206	6/12	1:28	1:32	1:37	5	P	
3/3/16	305	4.3/10.5	3:52	3:55	3:59	4	P	
3/3/16	302	3.5/11.8	4:13	4:15	4:18	3	P	
3/3/16	201	5	Visual		leans to 21'		F	

REMARKS

#305 rock at NW end would be outcrop except for prior agricultural practices - 25 ft sbsk

SANITARIAN

R. Hatcher, S. Collins

BACKHOE

Others

Others

Jean Alexander

TEST HOLES USED IN SDA

AVG. PERC TIME

SQ. FT/BR

TRENCH WIDTH

INLET DEPTH

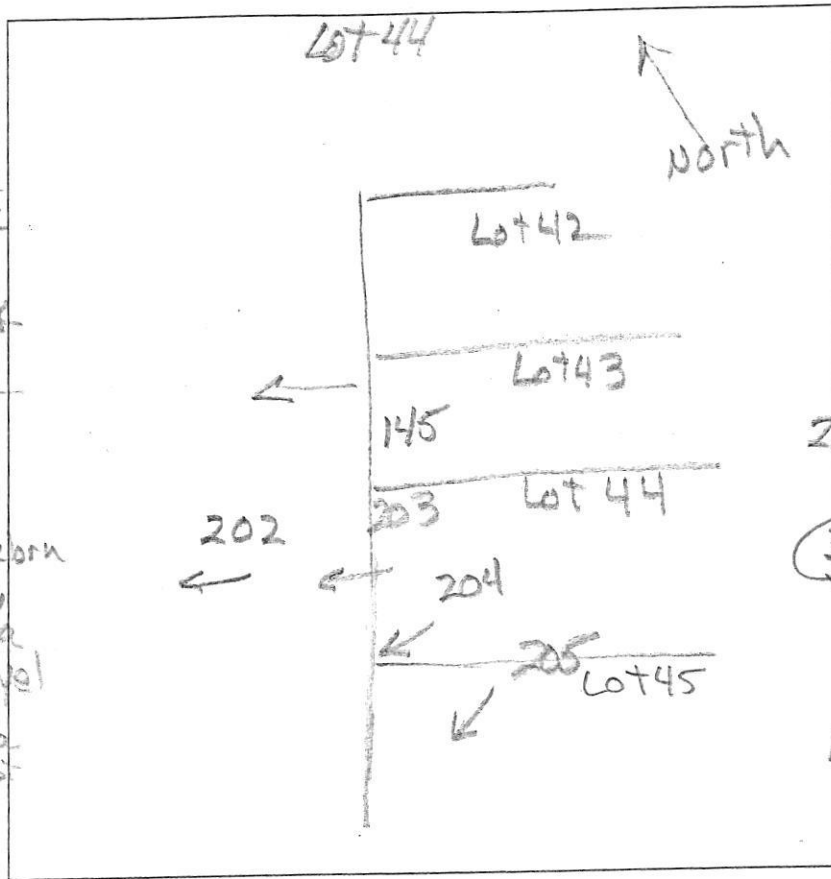
MAX. BOT DEPTH

EFFECTIVE SW

A/P _____

(203)
 0.2' dk brn L, 1/2 sbk, few mica
 0.5' brn L, 2/3 sbk, few mica
 2.2' brn L, 2msbk, few mica
 3.3' red-brn sl, thick platy, few mica
 10.5' vel-red & pale brn ls, thin platy, 100 micron mica
 12.5' chls, many mica, platy, moist, no water

(202)
 0.6' dk brn sl, to brn sl, 1/2 sbk
 2.4' vel-red & pale brn ls, thick platy, many mica
 4.5' red-yel ls, thick platy, many mica
 10.5' red-yel, pale yel, & H. grey chls
 13' moist grey, dk, brn, & red-yel chls, many mica, platy, water



(204)
 0.2' dk brn L, 2/3 sbk
 0.9' red-brn L, 2/3 sbk, ss
 1.5' red-brn L, 2msbk, ss
 2.5' vel-red & pale brn sl, thick platy, few channels, few thin black minerals veins
 3.4' vel-red & yellow & pale brn ls, thin platy, common mica, few channels
 11' dk, brn chls, platy, many mica
 13' no water

(205)
 0.6' brn sl, 2/3 sbk, 1/2 channels
 6.5' brn chsl, 1/2 sbk
 3' vel-red & brn sl, 1msbk, many mica
 5' red-brn & brn vstsl, dense, fine
 10' H. red & brn ls, thin platy, few mica
 13' brn ls, platy, many mica

DATE	TEST #	DEPTH	START	BREAK 1" DROP	STOP 2" DROP	TIME OF 2ND INCH	P/F/H
11/23/15	203	4.3' / 10.5'	2:18	2:20	2:24	4	P
11/23/15	202	4' / 10.5'	2:39	2:43	2:51	8	P
11/23/15	204	4.5' / 13'	2:59	3:01	3:03	2	P
11/23/15	205	5.7' / 13'	3:24	3:27	3:31	4	P

REMARKS _____
 SANITARIAN R. Bricker BACKHOE Art Field's OTHERS Joson Alexander
 TEST HOLES USED IN SDA _____ AVG. PERC TIME _____ SQ. FT/BR _____
 TRENCH WIDTH _____ INLET DEPTH _____ MAX. BOT DEPTH _____ EFFECTIVE SW _____