



93
 dk brn L 2 fsk
 1' brn L, 1 fsk
 1.8' brn sl, 2 msbk
 1.4' brn sl, 3 msbk
 2.4' lt brn sl, 1 cm
 4.5' dense
 red & brn
 st sl, dense
 5.5' yel-red
 vst ls, 0.5 g.
 9' 40%
 yellow-red
 & pale brn ls
 14.5' 0.5 g.

89
 brn L, 2 fsk
 to 2 msbk
 0.7' brn L, 2 msbk
 1.4' H. brn L
 2 fsk
 1.8' yel-br sl
 2 msbk
 few chnns
 2.5' H. brn chsl
 7 fsk
 3.7' H. brn & yellow
 1 fsk, 0.5 g.
 12' pale yellow
 & pale brn fsk
 14'

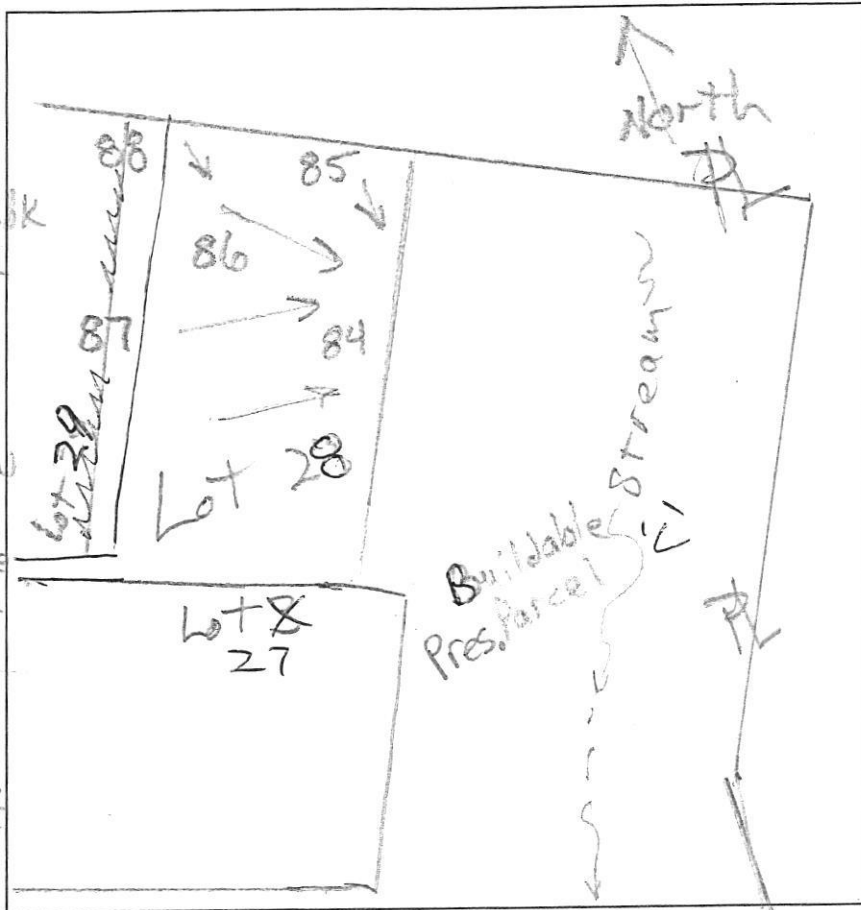
91
 dk brn L
 3 fsk
 0.7' brn L, 1 fsk
 1.6' brn L, 2 fsk
 2.6' brn sl, 1 msbk
 dense
 yel-red
 pale yellow
 st sl, 1 cm, dense
 5.3' yel-red
 & lt. brn chls
 0.5 g., mica
 6.7' pale yellow
 & lt. brn fsk, many mica
 10.8' pale brn
 chls, mica
 12.8'

90
 brn L, 2 fsk
 1' brn L, 1 msbk
 H. brn sl
 2 fsk
 2.4' brn & lt. brn
 fsk, thin
 platy
 H. brn &
 pale yellow fsk
 13.5'

DATE	TEST #	DEPTH	START	BREAK 1" DROP	STOP 2" DROP	TIME OF 2ND INCH	P/F/H
10/24/14	88	7' 1/2'	2:36	2:43	2:57	9	P
10/24/14	89	5' 1/4'	2:59	3:01	3:06	5	P
10/24/14	90	4' 3/5'	3:22	3:24	3:29	5	P
10/24/14	91	6' 2 1/2' / 12.8'	3:33	3:46	4:16	30	P

REMARKS
 SANITARIAN R Bricker BACKHOE Hatfield's OTHERS any
 TEST HOLES USED IN SDA _____ AVG. PERC TIME _____ SQ. FT/BR _____
 TRENCH WIDTH _____ INLET DEPTH _____ MAX. BOT DEPTH _____ EFFECTIVE SW _____

Lot 24



84
 dk brn L
 0.8' 2vlsbk to 1fsbk
 brn L, 2msbk
 1.4' to 3csbk
 1' yel-brn sl
 4csbk
 2.5' yel-red & pale yellow
 4' 1fs, 2msbk
 yel-red & pale yellow
 1fs, 0sg
 13.5'

85
 dk brn L
 1' 3fg to 2msbk
 1' brn chsl
 7msbk
 1.7' red-brn sl
 2msbk
 3' lt. brn ls
 within platy
 few channels
 many fine mica
 4.8' pale brn
 & pale yellow
 1fs, 0sg
 2' pale yellow
 many mica
 thick platy
 13'

86
 dk brn L
 0.7' brn L, 2csbk
 1' brn L, 3csbk
 1.5' brn chsl
 2csbk
 2' yel-brn sl
 0.1' dense
 4.2' red & brn
 1fs, thin platy
 5' pale brn
 & pale yellow
 1fs, 0sg
 common mica
 7.8' pale brn
 chsl, thick
 platy
 13.5'

87
 dk brn L, 2fg
 brn L, 1csbk
 brn L, 2msbk
 1.2' yel-brn sl
 1.9' csbk, mica
 1' lt. brn 1fs
 0sg, few mica
 common roots
 3.5' lt. brn & pale
 yellow
 1fs, 0sg
 few roots
 12'

DATE	TEST #	DEPTH	START	BREAK 1" DROP	STOP 2" DROP	TIME OF 2ND INCH	P/F/H
10/24/14	84	13.5'	Visual	Sidewall	1.2 gpd	3'-8" / 12+2	P
10/24/14	85	13'	Visual	Sidewall	1.2 gpd	3'-8" / 12+2	P
10/24/14	86	5' / 13.5'	2:02	2:06	2:15	9	P
10/24/14	87	3.5' / 12'	2:25	2:28	2:35	7	P
10/24/14	88	7' / 14.5'	2:36	2:43	2:51	8	P

REMARKS _____
 SANITARIAN RBricker BACKHOE Harfield's (Donnie) OTHERS Lot
 TEST HOLES USED IN SDA _____ AVG. PERC TIME _____ SQ. FT/BR _____
 TRENCH WIDTH _____ INLET DEPTH _____ MAX. BOT DEPTH _____ EFFECTIVE SW _____