



LIVING SIDE ELEVATION
SCALE 3/8" = 1'



02/04/2022

Professional Certification, I hereby certify that these documents were prepared or approved by me, and that I am a duly licensed professional engineer under the laws of the State of Maryland, License No. 00358, Expiration Date: 12-12-2022.

The information on this drawing is the property of Keystone Custom Homes, Inc. and is provided under copyright law. It is not to be copied, reproduced, or otherwise used without the express written consent of Keystone Custom Homes, Inc. All copyright notices are hereby acknowledged. © 2022 Keystone Custom Homes, Inc. All rights reserved. This drawing is the property of Keystone Custom Homes, Inc. and is provided under copyright law. It is not to be copied, reproduced, or otherwise used without the express written consent of Keystone Custom Homes, Inc. All copyright notices are hereby acknowledged. © 2022 Keystone Custom Homes, Inc. All rights reserved.

227 GRANITE RUN DRIVE, SUITE 100
LANCASTER, PENNSYLVANIA 17601
PH: (717) 464-9060 • FAX: (717) 464-9046
www.keystonecustomhomes.com



KEYSTONE CUSTOM HOMES, INC.

PROJECT NO.	LIVING SIDE ELEVATION
DATE	FEB 03 2022
BY	AS NOTED
CHKD BY	T. BECNET
SCALE	MRS031 PARK
SHEET NO.	ALL pages 80



REAR ELEVATION
SCALE 3/8" = 1'-0"



Professional Certification: I hereby certify that these documents were prepared or approved by me, and that I am a duly licensed professional engineer under the laws of the State of Maryland, License No. 36338, Expiration Date: 12-12-2022.

The architect of record, drawings, and specifications for this project are the property of Keystone Custom Homes, Inc. and its affiliates. All rights reserved. No part of these drawings may be reproduced, stored in a retrieval system, or transmitted in any form or by any means, electronic, mechanical, photocopying, recording, or by any information storage and retrieval system, without the prior written permission of Keystone Custom Homes, Inc. All rights reserved. Keystone Custom Homes, Inc. is a registered professional engineering firm in the State of Maryland. License No. 36338, Expiration Date: 12-12-2022.

227 GRANITE RUN DRIVE, SUITE 100
LANCASTER, PENNSYLVANIA 17601
PH: (717) 464-9060 • FAX: (717) 464-9046
www.keystonecustomhomes.com



KEYSTONE CUSTOM HOMES, INC.

PROJECT	REAR ELEVATION
DATE	FEB 03 2022
SCALE	AS NOTED
DRAWN BY	T. DEMONT
CHECKED BY	MRS031 PARK
DATE	02/04/2022
SCALE	AS NOTED
DRAWN BY	T. DEMONT
CHECKED BY	MRS031 PARK
DATE	02/04/2022
SCALE	AS NOTED
DRAWN BY	T. DEMONT
CHECKED BY	MRS031 PARK
DATE	02/04/2022



GARAGE SIDE ELEVATION
SCALE: 3/8" = 1'-0"



Professional Certification: I hereby certify that these documents were prepared or approved by me, and that I am a duly licensed professional engineer under the laws of the State of Maryland, License No. 30726, Expiration Date: 12-12-2022.

The Architectural Design, drawings and/or set of Plans are the property of Keystone Custom Homes, Inc. and are intended as the complete set. They are not to be used in whole or in part, copied, reproduced, or otherwise used without the express written consent of the Architect. All copyright notices are provided by the Architect. Copyright © 2022 by Keystone Custom Homes, Inc. All rights reserved. No part of this document may be reproduced, stored in a retrieval system, or transmitted in any form or by any means, electronic, mechanical, photocopying, recording, or by any information storage and retrieval system, without the prior written permission of the Architect. For more information, contact the Architect at 227 Granite Run Drive, Lancaster, PA 17601. Phone: (717) 464-9060. Fax: (717) 464-9046. Website: www.keystonemcustomhomes.com

227 GRANITE RUN DRIVE, SUITE 100
LANCASTER, PENNSYLVANIA 17601
PH: (717) 464-9060 • FAX: (717) 464-9046
www.keystonemcustomhomes.com



KEYSTONE CUSTOM HOMES, INC.

SHEET NO. 01
GARAGE SIDE ELEVATION
PROJECT: MRS031
PARK

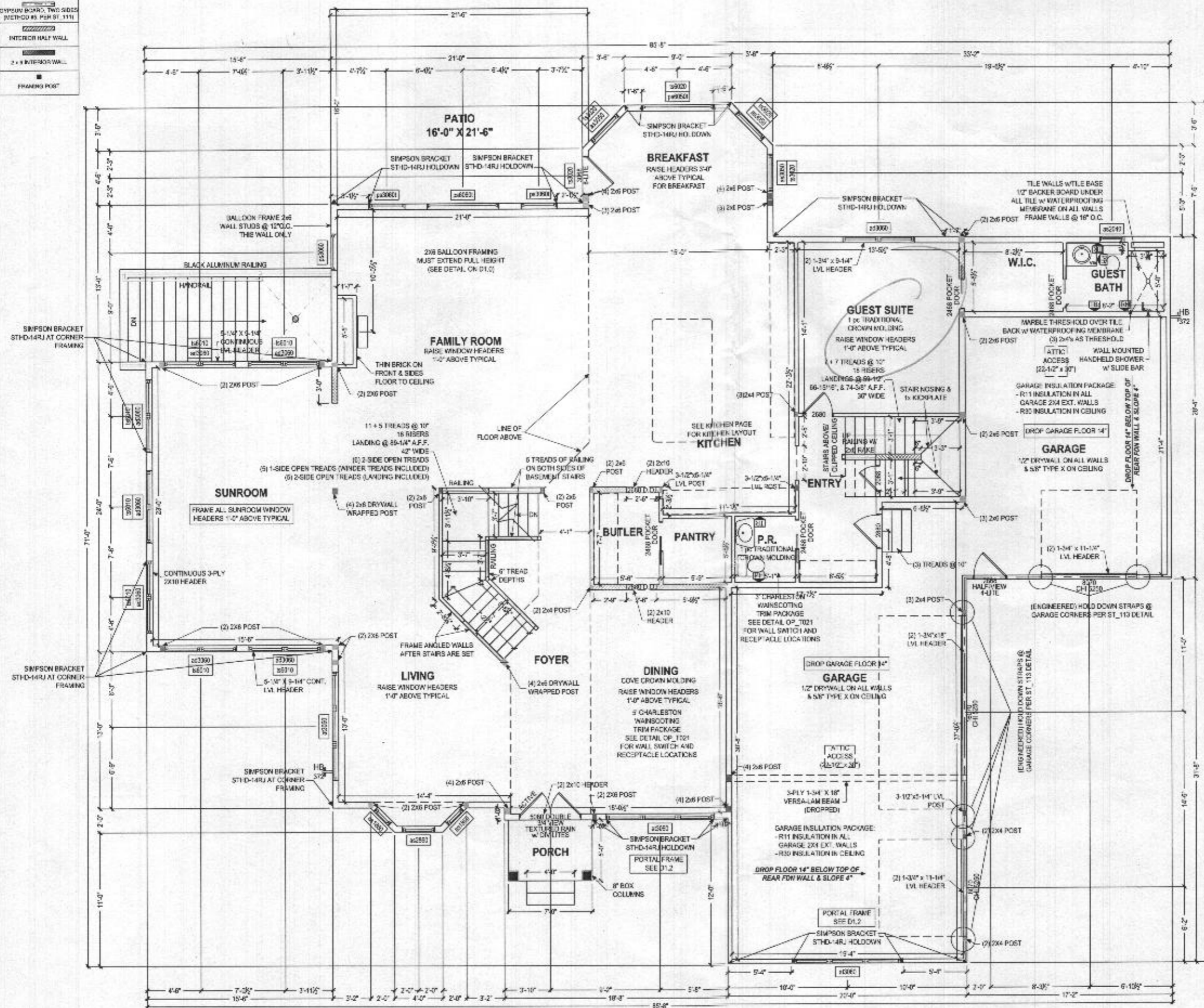
DATE: FEB 03 2022
SCALE: AS NOTED
DRAWN BY: T.BEWENT

SHEET NO. **A13**
PAGE **ad s 80**

ALL EXTERIOR WALLS ARE 100% CONTINUOUS STRUCTURAL SHEATHING METHOD AS PER ST. 113

- SIMPSON BRKD, TWO SIDED METHOD AS PER ST. 113
- INTERIOR HALL WALL
- 2x4 INTERIOR WALL
- FRAMING POST

Professional Certification: I hereby certify that these documents were prepared or approved by me, and that I am a duly licensed professional engineer under the laws of the State of Maryland, License No. 23559.
 Expiration Date: 12-31-2022



SQUASH BLOCKS REQUIRED IN FLOOR FRAMING UNDER ALL POST LOADS, SAME SIZE AS POST

NOTE: CRAFTSMAN INTERIOR TRIM PACKAGE - ALLOW 6" FOR ALL WINDOW/DOOR HEADER TRIM

RESIDENTIAL SPRINKLER SYSTEM TO BE INSTALLED IN ACCORDANCE WITH THE IBC'S IRC. THIRD PARTY AGENCY TO PROVIDE DRAWINGS AND INSTALL SYSTEM CONCEALED SPRINKLER HEADS

FIRST FLOOR PLAN
 SCALE: 3/16" = 1'-0"

227 GRANITE RUN DRIVE, SUITE 100
 LANCASTER, PENNSYLVANIA 17601
 PH: (717) 464-9060 • FAX: (717) 464-9046
 www.keystonecustomhomes.com



KEYSTONE CUSTOM HOMES, INC.

PROJECT LOCATION: MRS031 PARK

DATE: FEB 03 2022
 SCALE: AS NOTED
 DRAWN BY: T.BEWENT

PL.0
 P.10
 a s 80

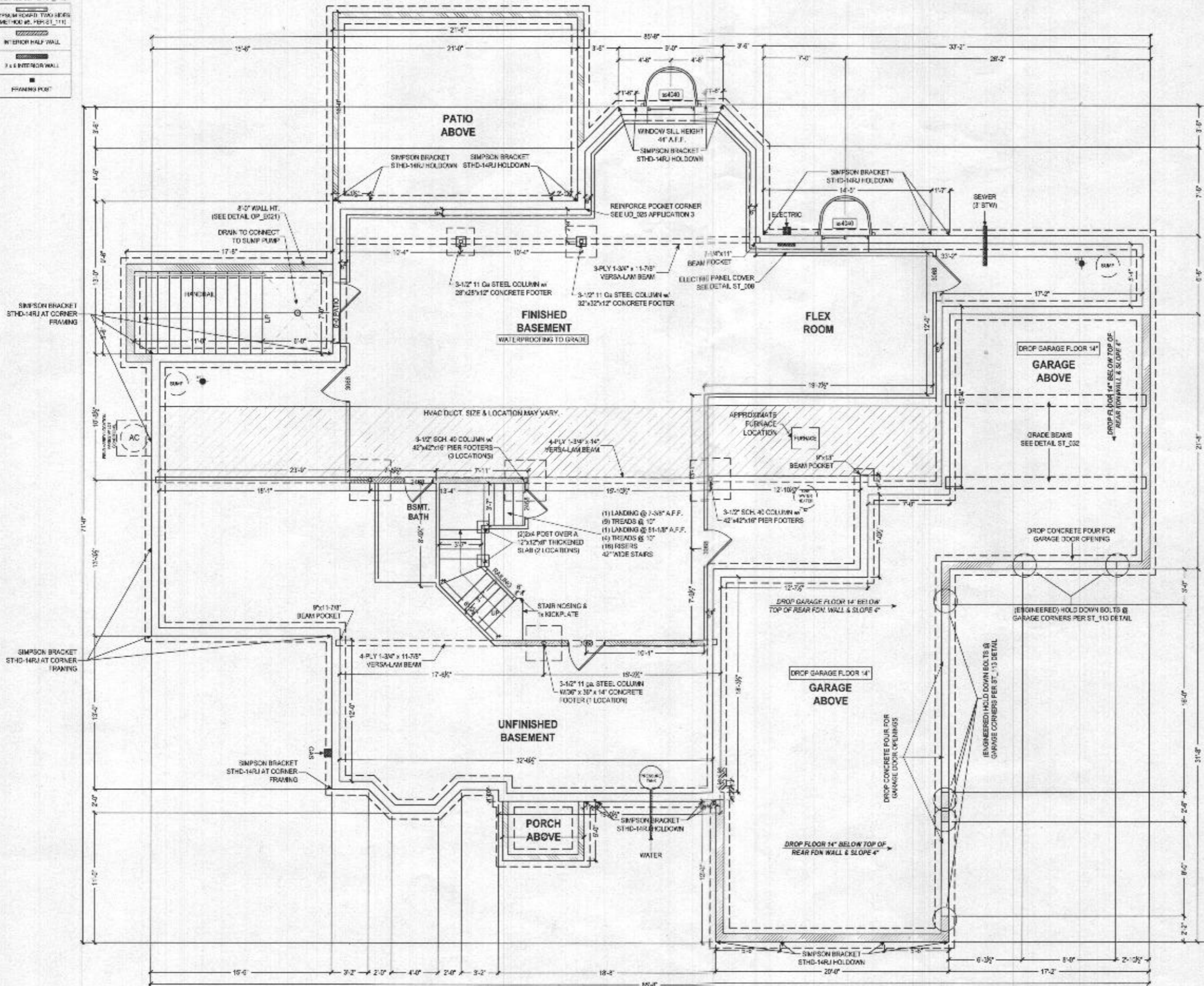
ALL EXTERIOR WALLS ARE 12" O.C. CONCRETE WITH STRUCTURAL REINFORCEMENT PER DETAIL ST_113

SYMPSON BRACKET TWO BEAMS (METHOD NO. PER ST_111)

INTERIOR HALF WALL

3 x 6 INTERIOR WALL

FRAMING POST



FOUNDATION PLAN
SCALE: 1/8" = 1'-0"

NOTE TO HOMEOWNER:
LOCATIONS SHOWN FOR HVAC, PLUMBING, AND OTHER MECHANICAL ITEMS WILL BE USED IF POSSIBLE. ACTUAL PLACEMENT OF FURNACE, WATER HEATER, SUMP PUMP, ETC. MAY VARY DUE TO INDIVIDUAL SITE REQUIREMENTS.

Professional Certification: I hereby certify that these specifications have been prepared or approved by me, and that I am a duly licensed professional engineer under the laws of the State of Maryland, License No. 50355, Expiration Date: 12-12-2022



The architect design drawings are the property of Keystone Custom Homes, Inc. and its products are copyrighted. No part of these drawings may be reproduced, stored in a retrieval system, or transmitted in any form or by any means, electronic, mechanical, photocopying, recording, or by any information storage and retrieval system, without the prior written consent of Keystone Custom Homes, Inc. or its authorized representative. This drawing is not to be used for any other project without the prior written consent of Keystone Custom Homes, Inc. or its authorized representative.

227 GRANITE RUN DRIVE, SUITE 100
LANCASTER, PENNSYLVANIA 17601
PH: (717) 464-9060 • FAX: (717) 464-9046
www.keystonecustomhomes.com



KEYSTONE CUSTOM HOMES, INC.

FOUNDATION PLAN
PROJECT: MRS031 PARK
DATE: FEB 02 2022
SCALE: AS NOTED
DRAWN BY: J. BENNETT

PROJECT NO. P1.2
JOB NO. ads 80

7x20" CONTINUOUS CONCRETE FOOTER @ 2500 P.S.I.
SOLUBLE BLOCKS REQUIRED IN FLOOR FRAMING UNDER ALL POST LOADS SAME SIZE AS POST

CHEFS PKG INCL:

- Three Maple Cabinet Style - May Upgrade Separately
- Small / Angled Crown Molding
- Door Trays
- **Drawer Bank(s)
- **Upper Glass Wall Cabinets w/ Lighting
- Installed for Kneer Line
- **Tracked Recessed Light Package w/ White Tiles for Level 20 Kitchen Sink
- Kitchen Faucet Upgrade
- Appliance Upgrade incl: 36" Gas Cooking, Double Electric Wall Oven, Sub in Microwave, 36" Vented Range Hood, Dishwasher
- **Roll-Out Shelves
- **Line Range Base Cabinet for Under Cooktop
- **Oven Cabinet for Double Wall Oven
- **Waste Secret Polished Cabinet
- **Specialty Kitchen Window
- **Ultrix Cabinet with Fixed Shelf Kit
- **24" Deep Refrigerator Wall Cabinet w/ In-Door Refrigerator End Panel(s) (REP)
- **42" Wide Refrigerator Cooking

** THESE INCLUDES ARE NOT FOR HOUSE OCCUPANCY. PLEASE SEE PLAN FOR SPECIFIC INFORMATION ON REQUIREMENTS, SIZE AND LOCATION.

KITCHEN SYMBOL LEGEND:

IN THE ABOVE SYMBOL LEGEND, THE SYMBOLS ARE FOR INFORMATION ONLY. THE SYMBOLS ARE NOT TO BE USED FOR ORDERING. THE SYMBOLS ARE NOT TO BE USED FOR ORDERING. THE SYMBOLS ARE NOT TO BE USED FOR ORDERING.

DB	Drawer Bank
GL	Glass Doors
SS	Slide Out Shelf
WB	Waste Bin
MW	Microwave (to be installed in cabinet)
UC	Under Cabinet Light

GEN. KITCHEN NOTES:

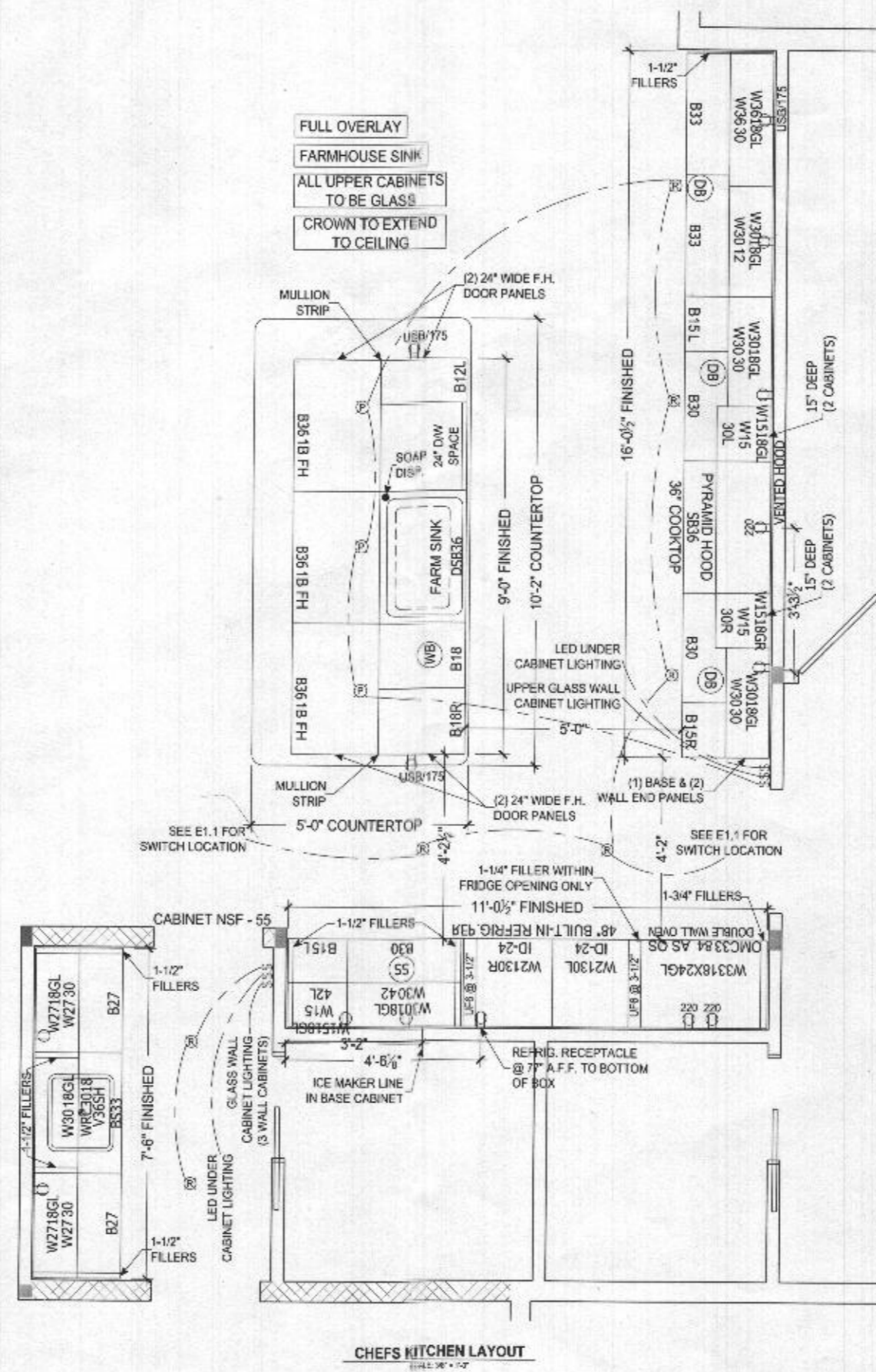
NON-VENTED HOOD FRAMING DIMENSION FROM SLAB OVER TO UNDERSIDE OF CABINET TO RANGE IS 6'-10" (30" H. CABINETS) 6'-0" (42" H. CABINETS)

FRAMING DIMENSIONS UNLESS OTHERWISE NOTED

ALL COUNTERTOP RECEPTACLES ARE GFI PROTECTED

TYPICAL WINDOW CASING REQUIRED, DO NOT USE WINDOW TRIM OPTION ON WINDOW

36" x 71" REFRIGERATOR SPACE



CHEFS KITCHEN LAYOUT
SCALE: 3/8" = 1'-0"

The information on this drawing is the property of Keystone Custom Homes, Inc. and is intended for the use of the client only. Reproduction or distribution of this drawing without the written consent of Keystone Custom Homes, Inc. is strictly prohibited. All materials and workmanship are to be in accordance with the contract documents. Keystone Custom Homes, Inc. is not responsible for any errors or omissions on this drawing. The client is responsible for verifying all dimensions and locations before construction begins. Keystone Custom Homes, Inc. is not responsible for any delays or cost overruns caused by the client or third parties. Keystone Custom Homes, Inc. is not responsible for any damage to the property caused by the client or third parties. Keystone Custom Homes, Inc. is not responsible for any other matters not specifically mentioned in the contract documents.

227 GRANITE RUN DRIVE, SUITE 100
LANCASTER, PENNSYLVANIA 17601
PH: (717) 464-9060 • FAX: (717) 464-9046
www.keystonecustomhomes.com



KEYSTONE CUSTOM HOMES, INC.



Professional Certification: I hereby certify that these documents were prepared or approved by me, and that I am a duly licensed professional engineer under the laws of the State of Maryland, License No. 20338, Expiration Date: 12-12-2022.

DATE: FEB 03 2022
AS NOTED
T.BEWCNT
KT1.0
ads80

8500000853

