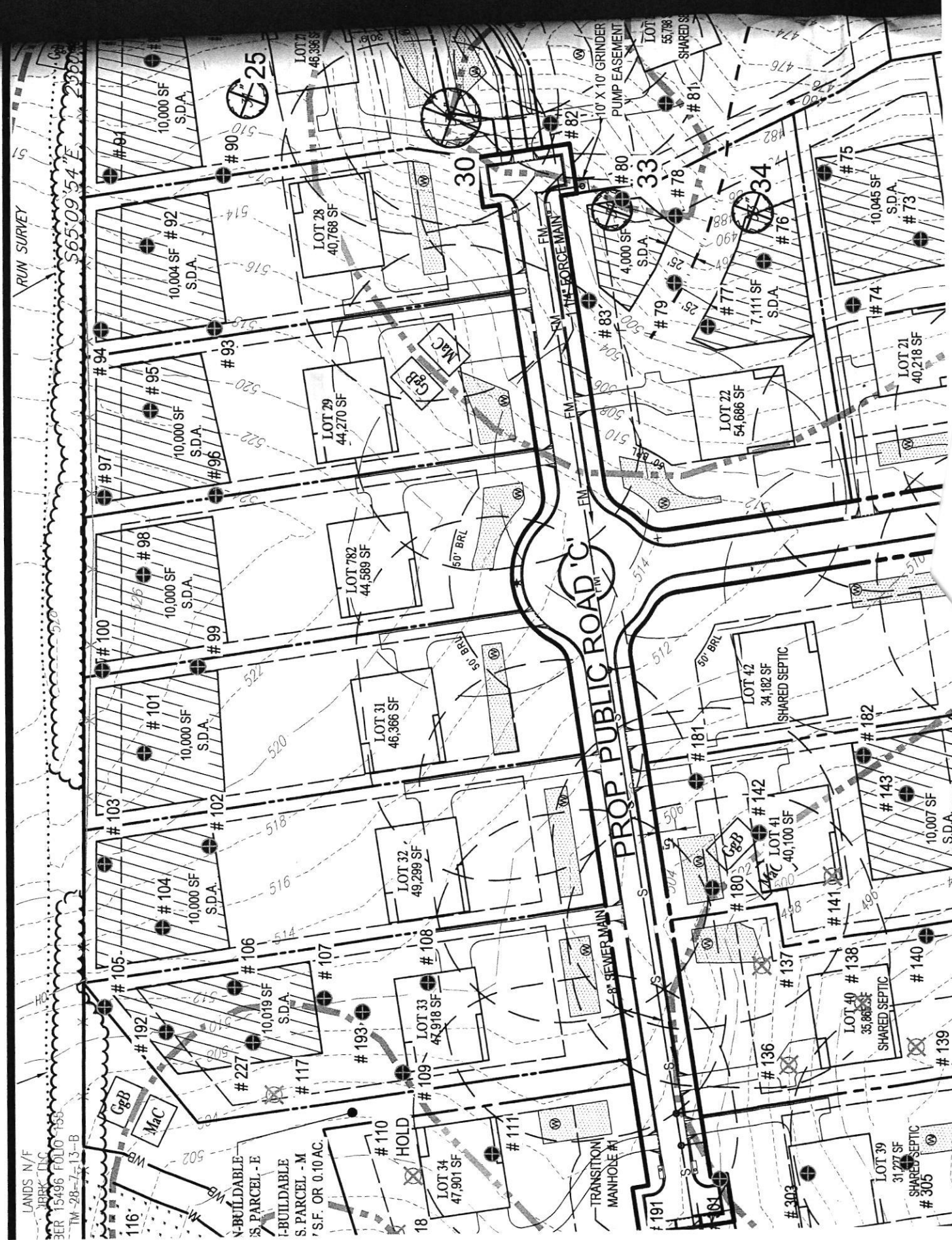


Part cart signed 6.19.19



LANDS N/F

NEWARK LLC

3ER 15496 FOLIO 183

TM-28-7-13-B

N-BUILDABLE

S. PARCEL - E

I-BUILDABLE

S. PARCEL - M

7 S.F. OR 0.10 AC.

#110

HOLD

LOT 34

47,901 SF

#111

TRANSITION

MANHOLE #1

#191

#192

#193

#194

#195

#196

#197

#198

#199

#200

LOT 39

31,277 SF

SHARED SEPTIC

#305

CgB

MaC

#227

#117

#192

#105

#106

#107

#108

#109

#110

#111

#112

#113

#114

#115

#116

#117

#118

#119

#120

#121

#122

#123

#124

#125

#126

#127

#128

#129

#192

#105

#106

#107

#108

#109

#110

#111

#112

#113

#114

#115

#116

#117

#118

#119

#120

#121

#122

#123

#124

#125

#126

#127

#128

#129

#130

#131

#132

#133

#192

#105

#106

#107

#108

#109

#110

#111

#112

#113

#114

#115

#116

#117

#118

#119

#120

#121

#122

#123

#124

#125

#126

#127

#128

#129

#130

#131

#132

#133

#192

#105

#106

#107

#108

#109

#110

#111

#112

#113

#114

#115

#116

#117

#118

#119

#120

#121

#122

#123

#124

#125

#126

#127

#128

#129

#130

#131

#132

#133

#192

#105

#106

#107

#108

#109

#110

#111

#112

#113

#114

#115

#116

#117

#118

#119

#120

#121

#122

#123

#124

#125

#126

#127

#128

#129

#130

#131

#132

#133

#192

#105

#106

#107

#108

#109

#110

#111

#112

#113

#114

#115

#116

#117

#118

#119

#120

#121

#122

#123

#124

#125

#126

#127

#128

#129

#130

#131

#132

#133

#192

#105

#106

#107

#108

#109

#110

#111

#112

#113

#114

#115

#116

#117

#118

#119

#120

#121

#122

#123

#124

#125

#126

#127

#128

#129

#130

#131

#132

#133

#192

#105

#106

#107

#108

#109

#110

#111

#112

#113

#114

#115

#116

#117

#118

#119

#120

#121

#122

#123

#124

#125

#126

#127

#128

#129

#130

#131

#132

#133

#192

#105

#106

#107

#108

#109

#110

#111

#112

#113

#114

#115

#116

#117

#118

#119

#120

#121

#122

#123

#124

#125

#126

#127

#128

#129

#130

#131

#132

#133

#192

#105

#106

#107

#108

#109

#110

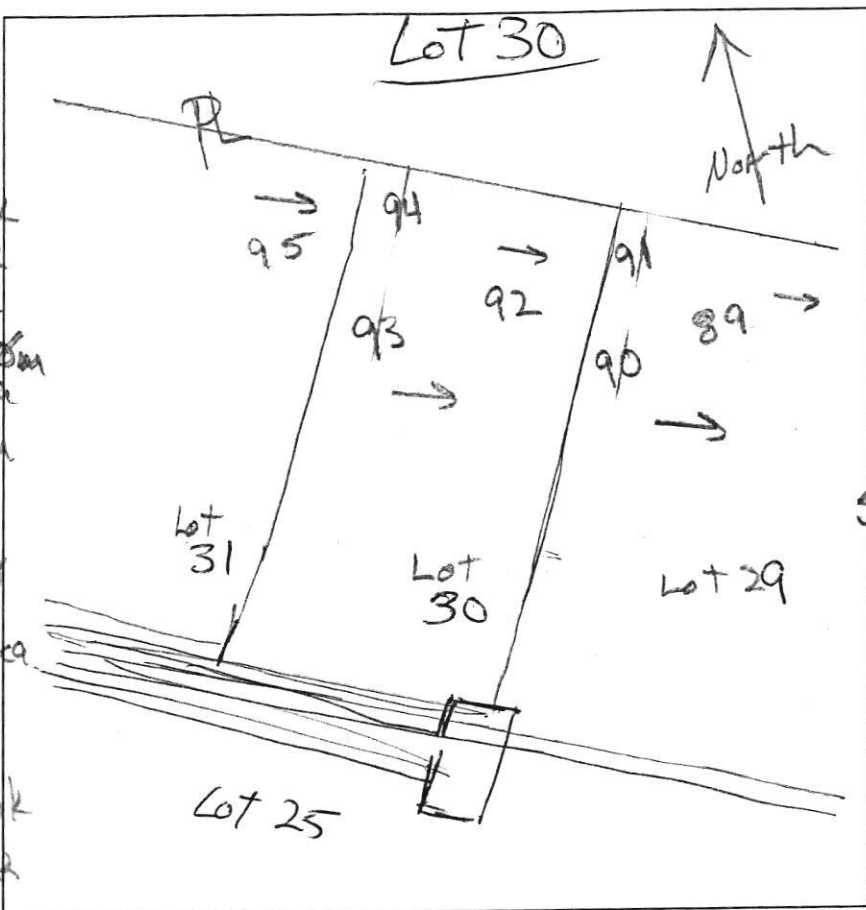
</

92

0.5 dk brn L  
2fg → 2f sbk  
brn L, 2 f sbk  
brn L, 3 f sbk  
3 yel-brn L, 2 f sbk  
4 red-brn sl, 1 m  
common mica  
dk brn, lt brn  
2 yel-red fgs  
many f mica  
wk. med. platy  
7.3 lt. brn fgs  
10 m, many mica  
13

93

dk brn L, 2 f sbk  
brn L, 2 m sbk  
to 1 m sbk  
2.4 red fgs, 1 m  
many mica  
3.2 red & yel-brn  
fgs, 1 m, many  
mica  
few angular rock  
5.7 lt. brn fgs  
10 m, many mica  
13 low rock frag.



94

dk brn L  
2fg → 1 f sbk  
brn sl  
2 m sbk  
1.6 yel-brn sl  
3 f sbk  
2.9 yel-brn  
kols  
35% angular rock  
5.8 red & brn  
fgs 1 m dense  
few cobbles  
common mica  
7 yel-red & lt brn  
fgs, 1 m, many  
mica  
13

DATE	TEST #	DEPTH	START	BREAK 1" DROP	STOP 2" DROP	TIME OF 2ND INCH	P/F/H
11/5/14	92	4.4 / 13'	10:47	10:54	11:07	16	P
11/5/14	94	7.5 / 13'	10:59	11:02	11:09	7	P
11/5/14	93	4.2 / 13'	11:17	11:20	11:25	5	P

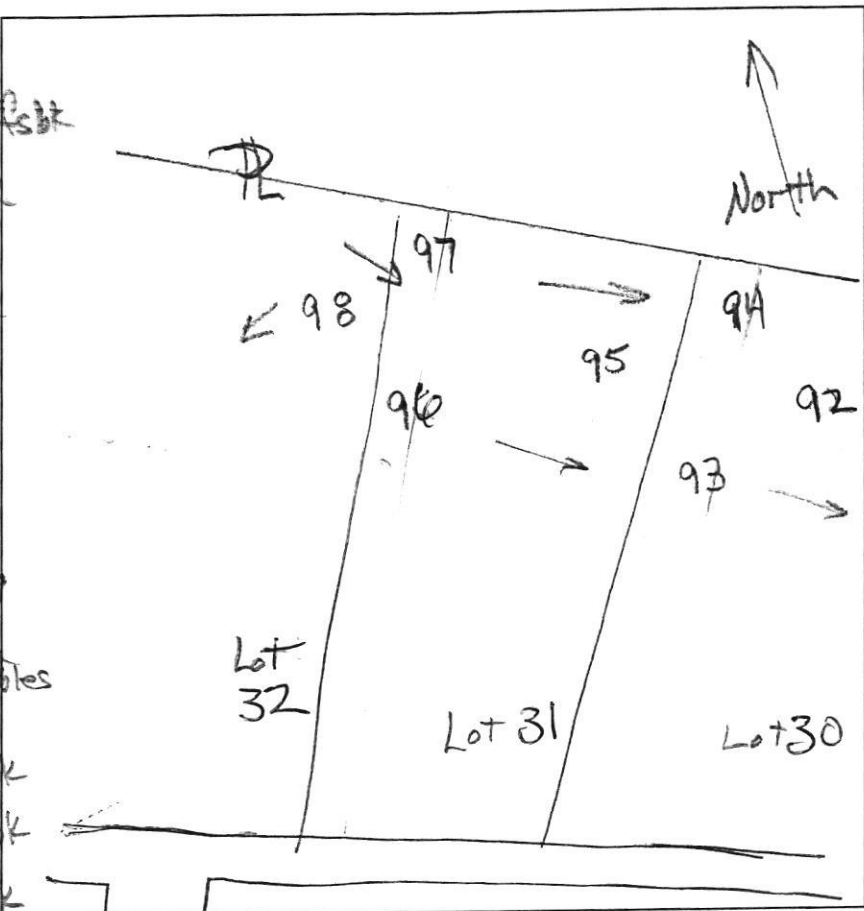
REMARKS \_\_\_\_\_  
 SANITARIAN Pricker BACKHOE Hot Field's (Downie) OTHERS B. Rowe  
 TEST HOLES USED IN SDA \_\_\_\_\_ AVG. PERC TIME \_\_\_\_\_ SQ. FT/BR \_\_\_\_\_  
 TRENCH WIDTH \_\_\_\_\_ INLET DEPTH \_\_\_\_\_ MAX. BOT DEPTH \_\_\_\_\_ EFFECTIVE S/W \_\_\_\_\_

Lot 25

A/P

95

dk brn L, 2v fsk  
 brn L, 3 fsk  
 to 1msbk  
 2 red sl, 0m  
 common mica  
 3 yel-red, yel-brn  
 & pale brn ls  
 many mica  
 wk, thin platy  
 6.5 lt brn vcol  
 8.5 35% rock frag  
 lt brn lfs  
 0m, many mica  
 few angular cobbles



96

1 dk brn sl, 2v fsk  
 1.8 yel-brn L, 2 fsk  
 2.8 brn L, 1msbk  
 yel-brn & yel-red  
 9 lfs, 0m  
 many mica  
 14 brn chls  
 many mica

97

dk brn sl, 2v fsk  
 0.8 brn sl, 1 fsk  
 1.6 brn L, 2 fsk  
 2.5 brn sl, 1msbk  
 common mica  
 red & yel-brn  
 lfs many mica  
 14 wk thin platy

DATE	TEST #	DEPTH	START	BREAK 1" DROP	STOP 2" DROP	TIME OF 2ND INCH	P/F/H
11/5/14	95	5.8 / 13	11:30	11:33	11:38	5	P
11/5/14	97	3.5 / 14	11:42	11:44	11:47	3	P
11/5/14	96	4 / 14	11:45	11:48	11:53	5	P

REMARKS \_\_\_\_\_  
 SANITARIAN R. Bricker BACKHOE Hatfield's (Donnie) B. Rowe OTHERS \_\_\_\_\_  
 TEST HOLES USED IN SDA \_\_\_\_\_ AVG. PERC TIME \_\_\_\_\_ SQ. FT/BR \_\_\_\_\_  
 TRENCH WIDTH \_\_\_\_\_ INLET DEPTH \_\_\_\_\_ MAX. BOT DEPTH \_\_\_\_\_ EFFECTIVE S/W \_\_\_\_\_

Lot 26

