

Lots 26 & 27

(9)

AP

(10)

0.7' dk brn sl, 1fg  
brn sl, 1fsbk  
10% channels  
few stones

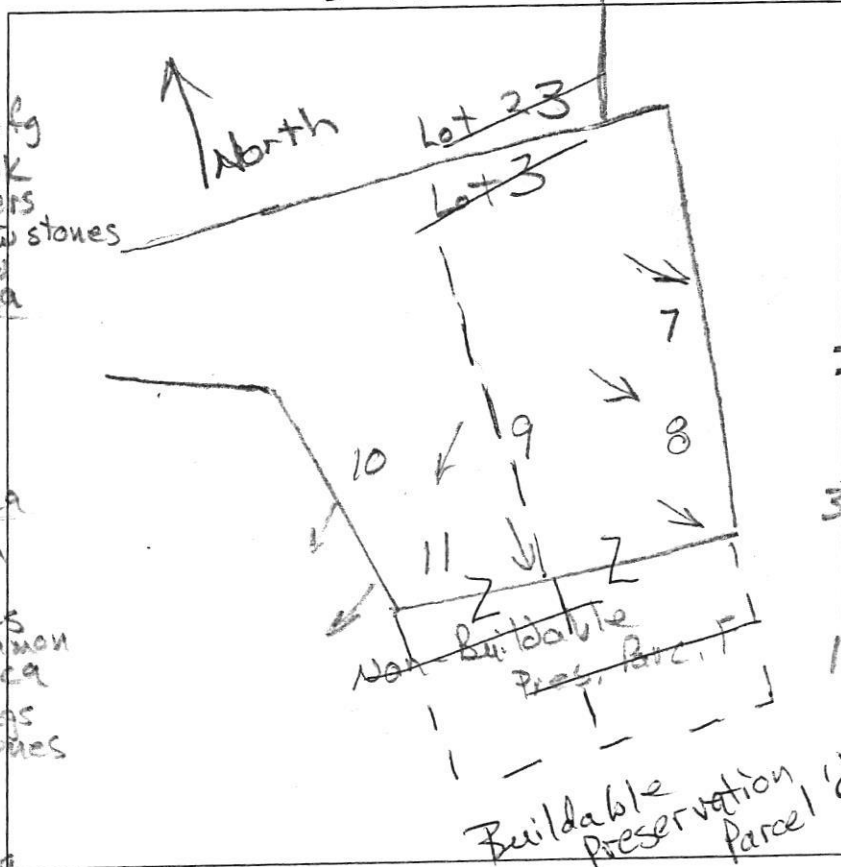
1.4' brn fs, few  
3fsbk, mica

2.6' red-brn  
cos  
2msbk

5' brn fs, few  
thin platy, mica

6.3' H. brn ls, com  
few mica

12.5' yel-brn lfs  
com, mica  
10%-15% flags  
stones



0.5' dk brn sl, 1fg  
brn fs, 1fsbk

1' brn l, 2fsbk  
ss

1.7' red-brn l  
2msbk, ss

2.4' brn fs, 2msbk  
common mica

3.8' H. brn & pale  
brn  
lfs, wk. medium  
platy mica

12.5' pale brn &  
pale yellow  
lfs, few  
channels

(11)

2' dk brn sl, 1fg  
brn fs, 2fsbk

3' red-brn l  
3fsbk, ss

3.3' red-brn fs  
2msbk,

5' red-brn vchls  
40-45% rock

10' H. brn & pale brn  
lfs, com, mica  
10%-15% flags  
& boulders

(7)

0.7' dk brn sl, 1fg  
brn fs, 10%  
channel  
1fsbk to 2fsbk

1.9' red & brn fs  
2msbk  
10%-15% channels

4' red & brn  
vchls, wk. platy  
35-40% rock

13.5' brn, dk. brn  
& grey  
chls  
medium platy  
few mica

DATE	TEST #	DEPTH	START	BREAK 1" DROP	STOP 2" DROP	TIME OF 2ND INCH	P/F/H
11/14/14	10	5.5' 2.5'	9:40	9:45	9:58	13	P
11/14/14	11	5.3' 1.0'	10:06	10:16	10:32	16	P
11/14/14	9	4.5' 1.25'	10:27	10:29	10:32	3	P
11/14/14	8	4.3' 1.25'	10:50	10:53	10:57	4	P
11/14/14	7	4.5' 1.35'	11:05	11:07	11:10	3	P

(8)

0.9' dk brn sl, 1fg  
brn fs, 2fsbk

1.5' brn fs, 2msbk

3.9' red & brn chls  
common coarse mica

12.5' pale brn  
& H. grey lfs  
wk. medium platy, common mica  
few angular cobbles

13.5'

REMARKS → indicates direction of runoff

SANITARIAN R. Bricker BACKHOE Hot Fields (Danne) OTHERS Art Leonard

TEST HOLES USED IN SDA \_\_\_\_\_ AVG. PERC TIME \_\_\_\_\_ SQ. FT/BR \_\_\_\_\_

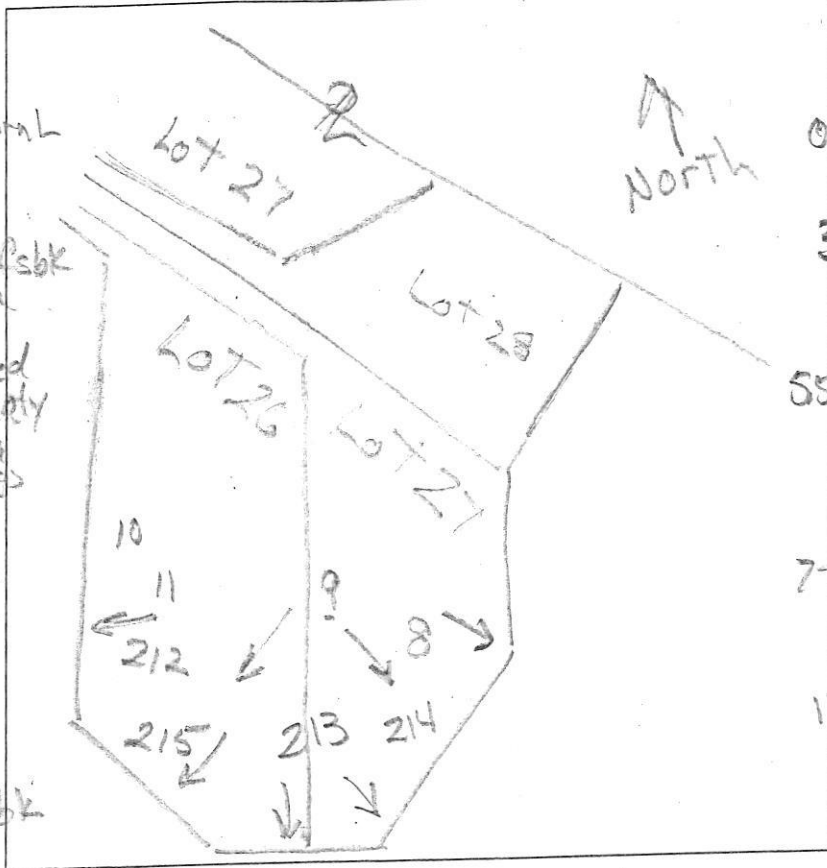
TRENCH WIDTH \_\_\_\_\_ INLET DEPTH \_\_\_\_\_ MAX. BOT DEPTH \_\_\_\_\_ EFFECTIVE S/W \_\_\_\_\_

Lot 3

lots 26 & 27

A/P

**212**  
 0.5' dk brn L to brn L  
 2 fsbk  
 brn & yel-red  
 L, 2 fsbk to 7 fsbk  
 common mica  
 SS  
 2' brn & yel-red  
 sl, thick platy  
 common mica  
 black coatings  
 2.5' red-yellow  
 H, brn & blk.  
 to common  
 mica  
 thin platy  
 13.8'



**212**  
 0.6' dk brn L, 1 fsbk  
 brn L, 2 fsbk  
 3' brn & yel-red  
 chsl, 1 fsbk  
 55' brn, blk  
 & yel-red  
 v. flls, dense  
 yel-red & pale brn  
 chsl platy  
 many mica  
 7' pale brn  
 chls many  
 mica  
 thick platy  
 few flags  
 13'

**214**  
 0.5' dk brn L  
 to brn L, 2 fsbk  
 6.8' brn L  
 2 fsbk SS  
 few mica  
 2.8' yel-red  
 & yel-brn  
 sl, thick platy  
 common mica  
 7.5' red-yellow  
 fsl, thin platy  
 few mica  
 13' pale brn  
 & red-yellow  
 common  
 mica  
 few flags  
 to 10%  
 flags  
 line, w/ depth

DATE	TEST #	DEPTH	START	BREAK 1" DROP	STOP 2" DROP	TIME OF 2ND INCH	P/F/H
11/23/15	213	4 1/3.8'	12:46	12:48	12:52	4	P
11/23/15	214	4.5' / 13'	12:59	1:04	1:12	7	P
11/23/15	212	5.2' / 13'	1:21	1:38	2:01	33	H
11/23/15	212	13'	Visual	Shallow	1:20	5.5-8	P
11/23/15	215	4.5' / 13'	1:40	1:43	1:48	5	P

**215**  
 dk brn sl  
 to brn sl, 2 fsbk  
 common mica  
 yel-brn &  
 yel-red  
 thick platy  
 many mica  
 2.8' pale brn  
 & pale yel-red  
 ls thick platy  
 many mica  
 4.5' pale brn  
 ls, thick  
 platy  
 many mica  
 few channers  
 13'

REMARKS \_\_\_\_\_  
 SANITARIAN R. Bricker BACKHOE Hatfield's OTHERS Jason Alexander  
Double Jason Van Kirk  
 TEST HOLES USED IN SDA \_\_\_\_\_ AVG. PERC TIME \_\_\_\_\_ SQ. FT/BR \_\_\_\_\_  
 TRENCH WIDTH \_\_\_\_\_ INLET DEPTH \_\_\_\_\_ MAX. BOT DEPTH \_\_\_\_\_ EFFECTIVE SW \_\_\_\_\_