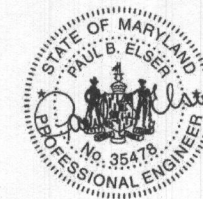


LIVING SIDE ELEVATION
SCALE: 1/4" = 1'-0"



Professional Certification. I hereby certify that these documents were prepared or approved by me, and that I am a fully licensed professional engineer under the law of the State of Maryland. License No. 35478, Expiration Date 06-18-2022.

The architectural design, drawings, and content of this firm is the property of Keystone Custom Homes, Inc. and is protected under copyright law. Reproduction in any form without express written consent is strictly prohibited. All copyrighted works are protected by United States Copyright Law (Title 17, United States Code) and the Berne Convention for the International Protection of Literary and Artistic Works. Federal and International Copyright protection laws extend to original and modified drawings, plans, architectural works, concepts and designs, and is applicable to International and non-international infringements, and provides for specific statutory damages both civil and criminal.

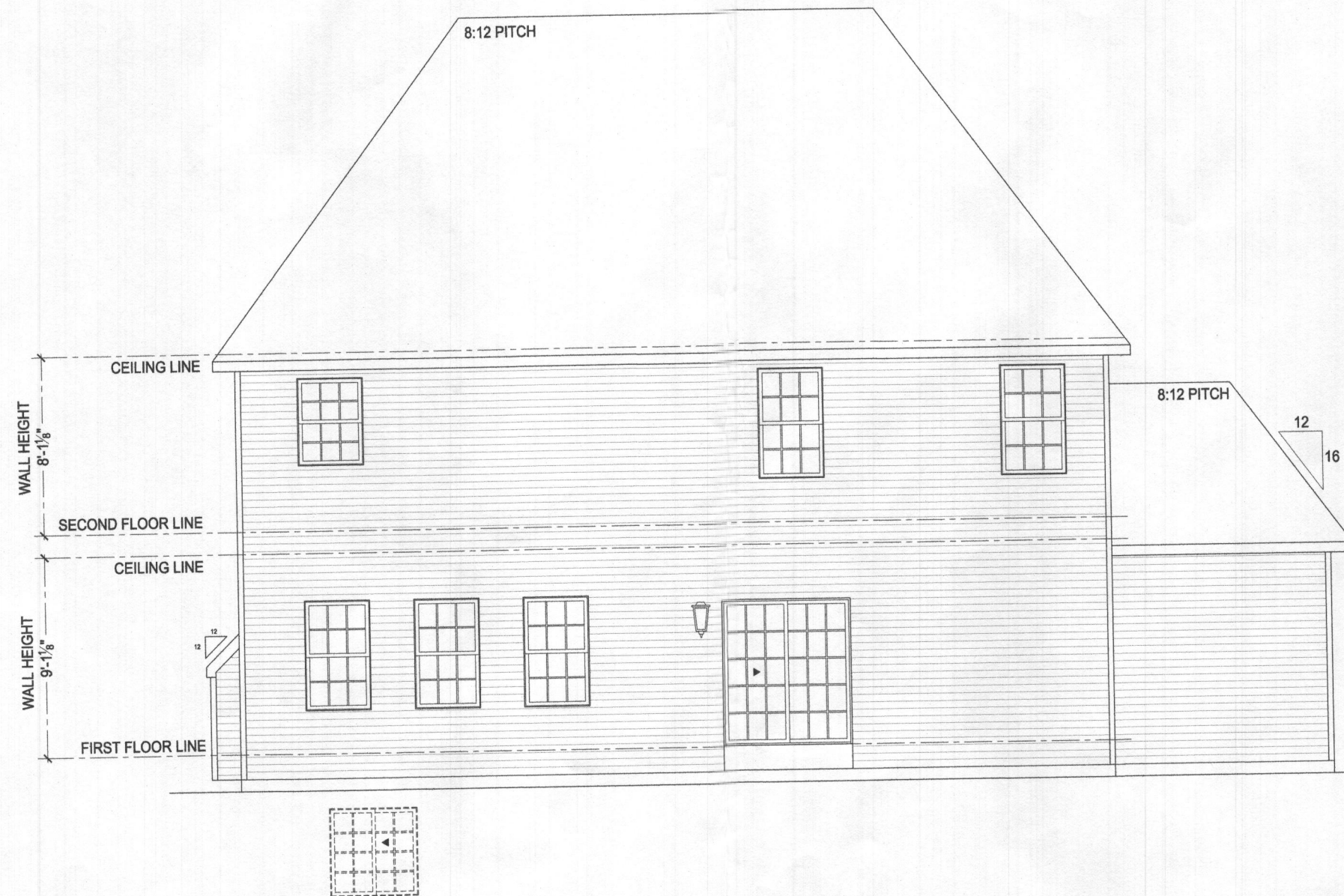
227 GRANITE RUN DRIVE, SUITE 100
LANCASTER, PENNSYLVANIA 17601
PH: (717) 464-9060 • FAX: (717) 464-9046
www.keystonecustomhome.com



KEYSTONE CUSTOM HOMES, INC.

SHEET DESCRIPTION:	LIVING SIDE ELEVATION
MODEL:	EA8005
	POHL
UPDATED:	OCT 5 2020
SCALE:	AS NOTED
DRAWN BY:	L.JARMOSKA
SHEET NO.:	A11
PLAN ID:	acv40

© Keystone Custom Homes, Inc.



REAR ELEVATION
SCALE: 1/4" = 1'-0"



Professional Certification. I hereby certify that these documents were prepared or approved by me, and that I am a fully licensed professional engineer under the law of the State of Maryland. License No. 35478, Expiration Date 06-18-2022

The architectural design, drawings, and content of this firm is the property of Keystone Custom Homes, Inc. and is protected under copyright law. Reproduction in any form without express written consent is strictly prohibited. All copyrighted works are protected by United States Copyright Law (Title 17, United States Code) and the Berne Convention for the International Protection of Literary and Artistic Works. Federal and International Copyright protection laws extend to original and modified derivative plans, architectural works, concepts and designs, and is applicable to International and uninternational infringements, and provides for specific statutory damages both civil and criminal.

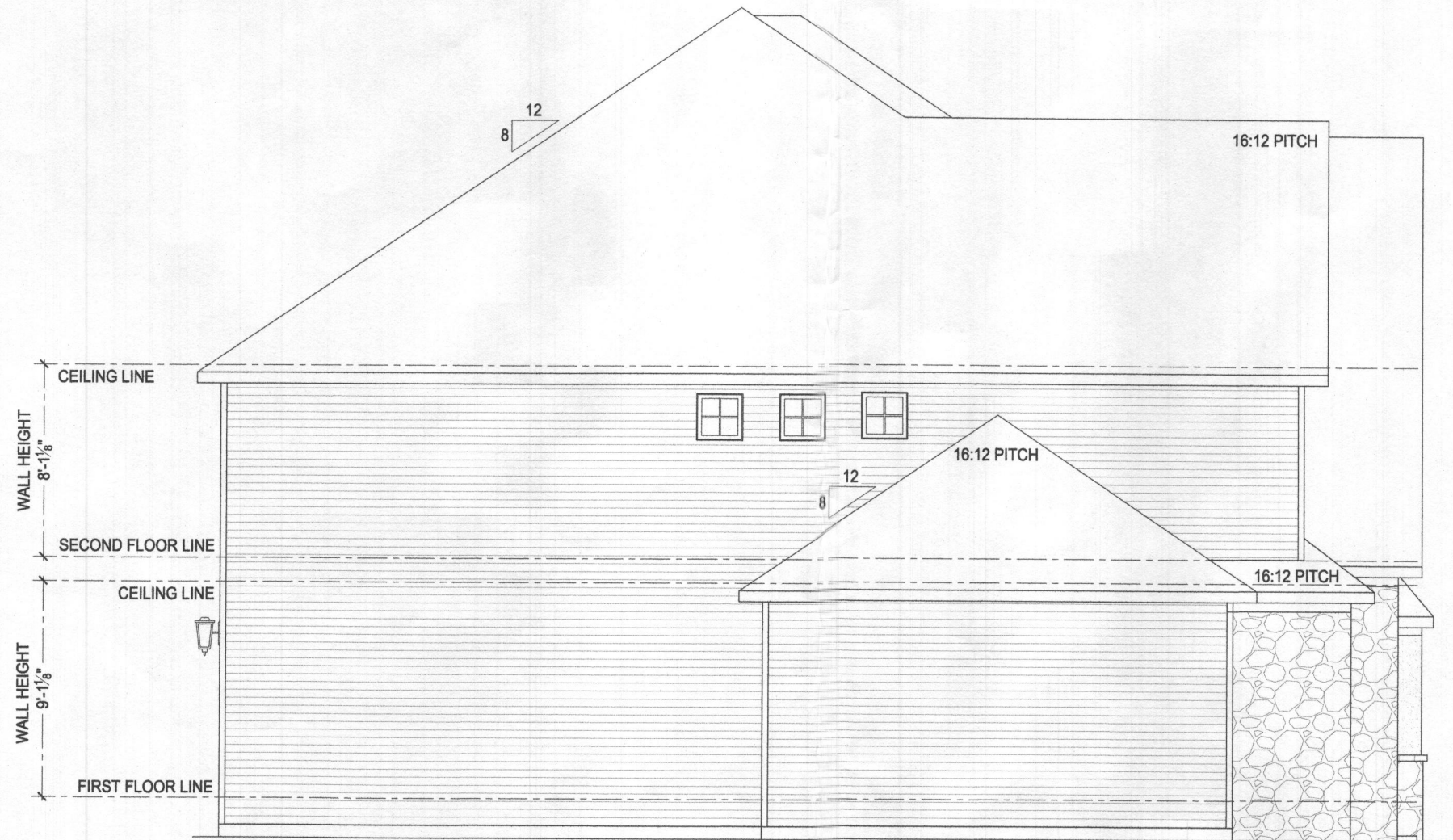
227 GRANITE RUN DRIVE, SUITE 100
LANCASTER, PENNSYLVANIA 17601
PH: (717) 464-9060 • FAX: (717) 464-9046
www.keystonecustomhome.com



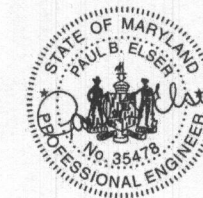
KEYSTONE CUSTOM HOMES, INC.

SHEET DESCRIPTION:	REAR ELEVATION
MODEL:	EAS005
POHL:	POHL
UPDATED:	OCT 5 2020
SCALE:	AS NOTED
DRAWN BY:	L. JARMOSKA
SHEET NO.:	A1.2
PLAN ID:	acv40

© Keystone Custom Homes, Inc.



GARAGE SIDE ELEVATION
SCALE: 1/4" = 1'-0"



Professional Certification. I hereby certify that these documents were prepared or approved by me, and that I am a fully licensed professional engineer under the laws of the State of Maryland. License No. 35478, Expiration Date 06-18-2022

The architectural design, drawings, and content of this firm is the property of Keystone Custom Homes, Inc. and is protected under copyright law. Reproduction in any form without express written consent is strictly prohibited. All copyrighted works are protected by United States Copyright Law (Title 17, United States Code) and the Berne Convention for the International Protection of Literary and Artistic Works. Federal and International Copyright protection laws extend to original and modified derivative plans, architectural works, concepts and designs, and is applicable to international and extrajurisdictional infringements, and provides for specific statutory damages both civil and criminal.

227 GRANITE RUN DRIVE, SUITE 100
LANCASTER, PENNSYLVANIA 17601
PH: (717) 464-9060 • FAX: (717) 464-9046
www.keystonecustomhome.com



KEYSTONE CUSTOM HOMES, INC.

SHEET DESCRIPTION: GARAGE SIDE ELEVATION
MODEL: EAs005 POHL

UPDATED: OCT 5 2020
SCALE: AS NOTED
DRAWN BY: L. JARMOSKA

SHEET NO. **A13**
PLAN ID: **acv40**

© Keystone Custom Homes, Inc.

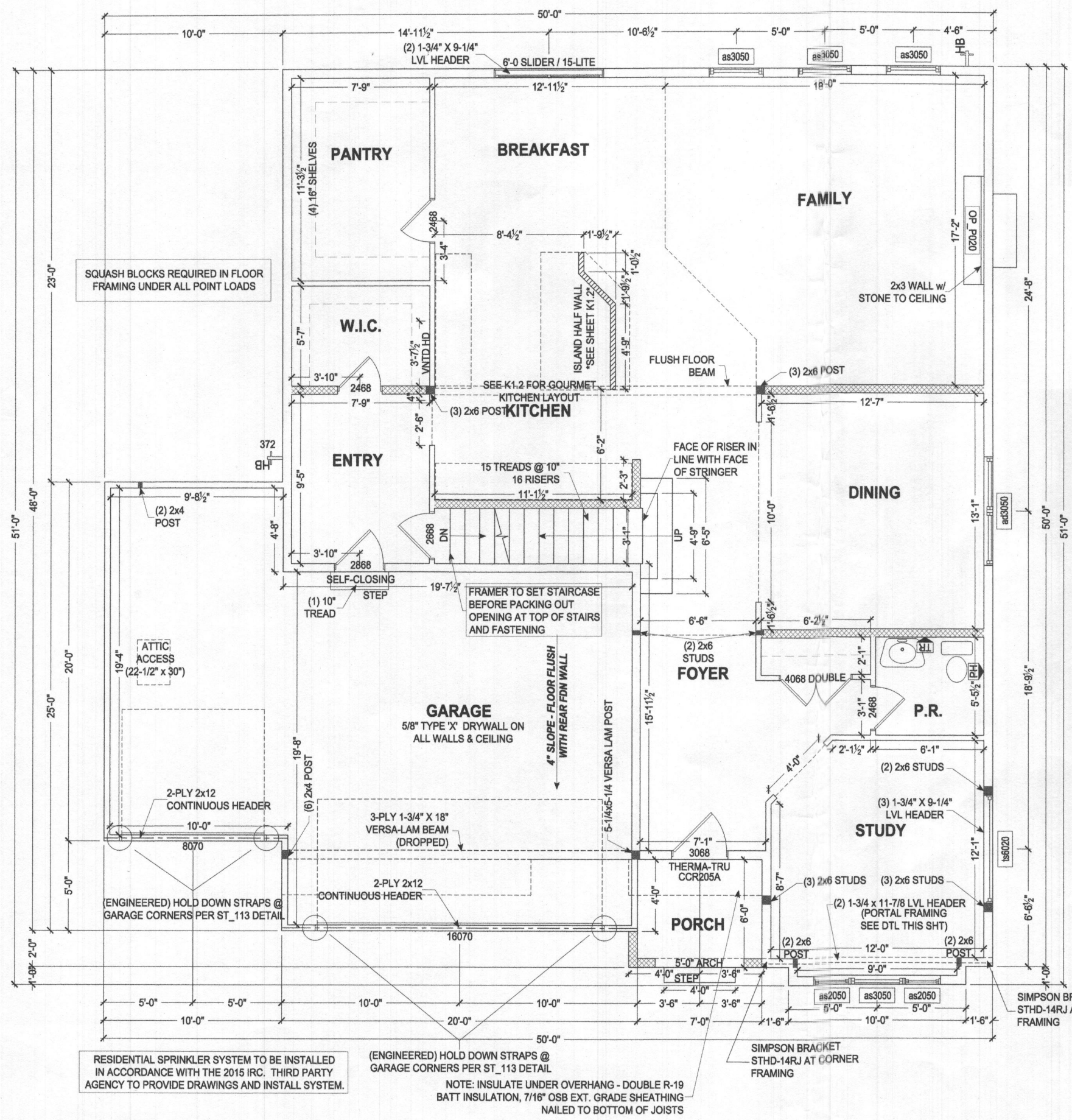
The architectural design, drawings, and content of this firm is the property of Keystone Custom Homes, Inc. and is protected under copyright law. Reproduction in any form without express written consent is strictly prohibited. All copyrighted works are protected by United States Copyright Law (Title 17, United States Code) and the Berne Convention for the International Protection of Literary and Artistic Works. Federal and International Copyright protection laws extend to original and modified derivative plans, architectural works, concepts and designs, and are applicable to international and unilateral infringements, and provides for specific statutory damages both civil and criminal.

227 GRANITE RUN DRIVE, SUITE 100
LANCASTER, PENNSYLVANIA 17601
PH: (717) 464-9060 • FAX: (717) 464-9046
www.keystonecustomhome.com

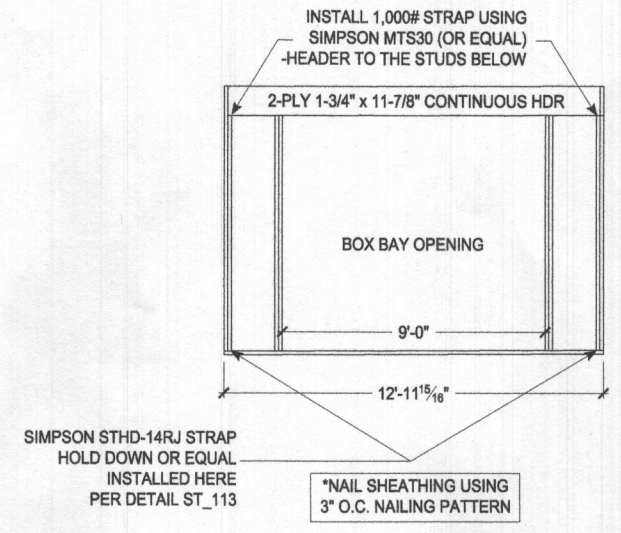


KEYSTONE CUSTOM HOMES, INC.

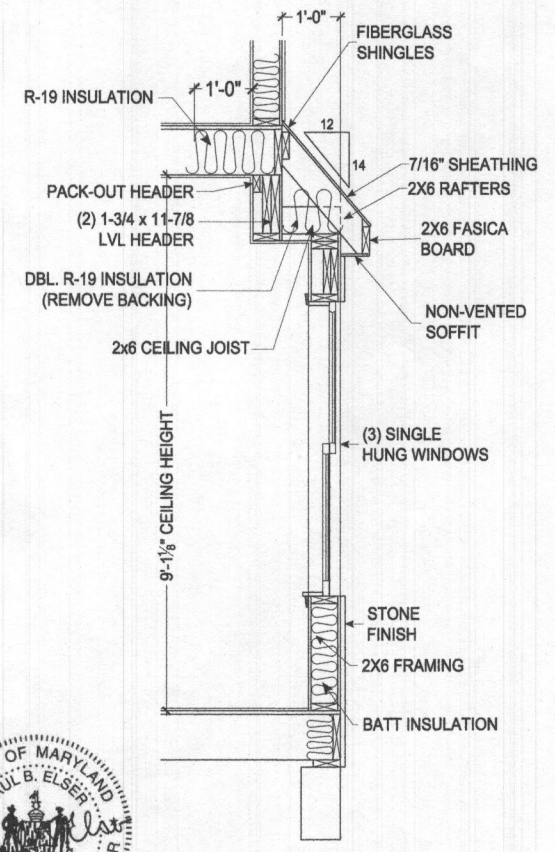
SHEET DESCRIPTION: FIRST FLOOR PLAN
MODEL: EA005
POHL
UPDATED: OCT 5 2020
SCALE: AS NOTED
DRAWN BY: L. JARMOSKA
SHEET NO. P1.0
PLAN ID: acv40



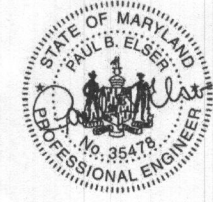
BRACED WALL DESIGN FRONT HOUSE WALL (STUDY) LIVING SIDE FOLLOW DETAIL ST_113 NARROW WALL BRACING



PORTAL FRAMING DETAIL SCALE: 1/4" = 1'-0"

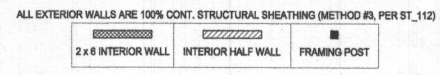


BOX BAY SECTION 9 FT. CEILING HEIGHT SCALE: 1/2" = 1'-0"



Professional Certification. I hereby certify that these documents were prepared or approved by me, and that I am a fully licensed professional engineer under the law of the State of Maryland. License No. 35478, Expiration Date 06-18-2022.

FIRST FLOOR PLAN SCALE: 1/4" = 1'-0"



ALL EXTERIOR WALLS ARE 100% CONT. STRUCTURAL SHEATHING (METHOD #3, PER ST_112)