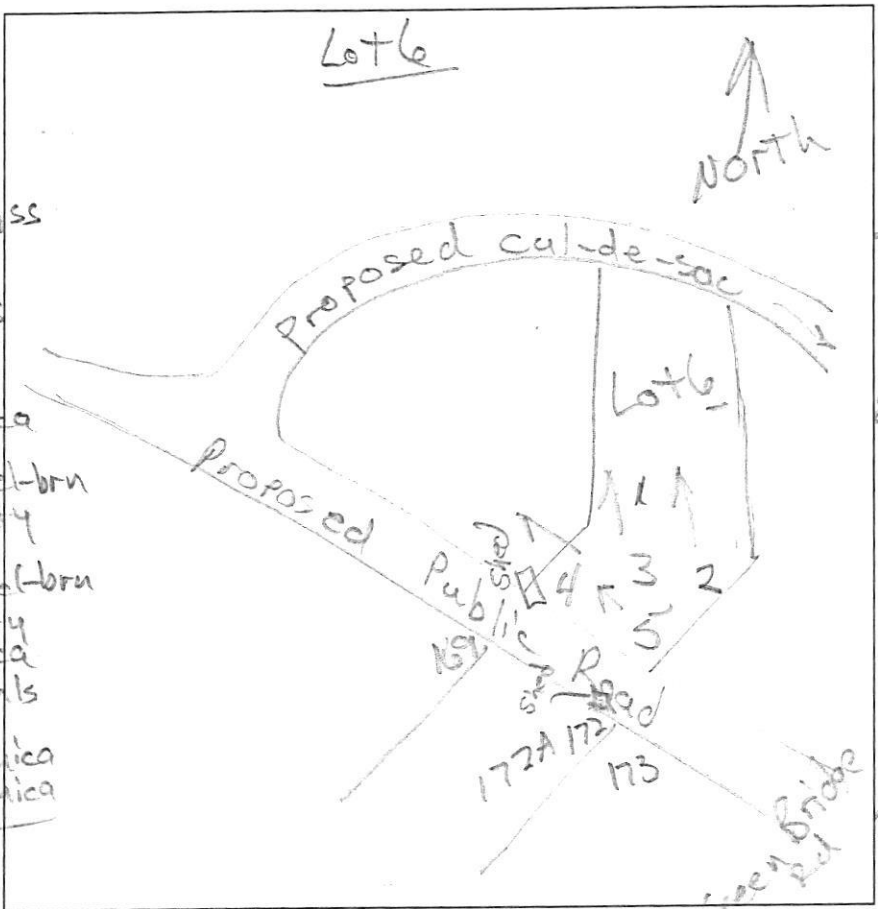


Lot 6

North ↑



5
0.9' dk brn L
brn L, 2 f sbk
brn cl, 2 msbk, ss
few mica
1.6' yel-red & brn
L, 2 msbk, ss
3' yel-red L
thick platy
common mica
4' yel-red & yel-brn
sl, thin platy
many mica
4.7' yel-red & yel-brn
ls, thin platy
many mica
10' yel-brn chls
thick platy
com. coarse mica
com. fine mica
14'

21
1.5' dk brn L
brn L, 2 f sbk
brn L, 2 msbk
com. mica
3.5' yel-red & brn
L, thick platy
common mica
yel-red
& brn ls
thin platy
many mica
8.8' yel-brn chls
thick platy
12.2'

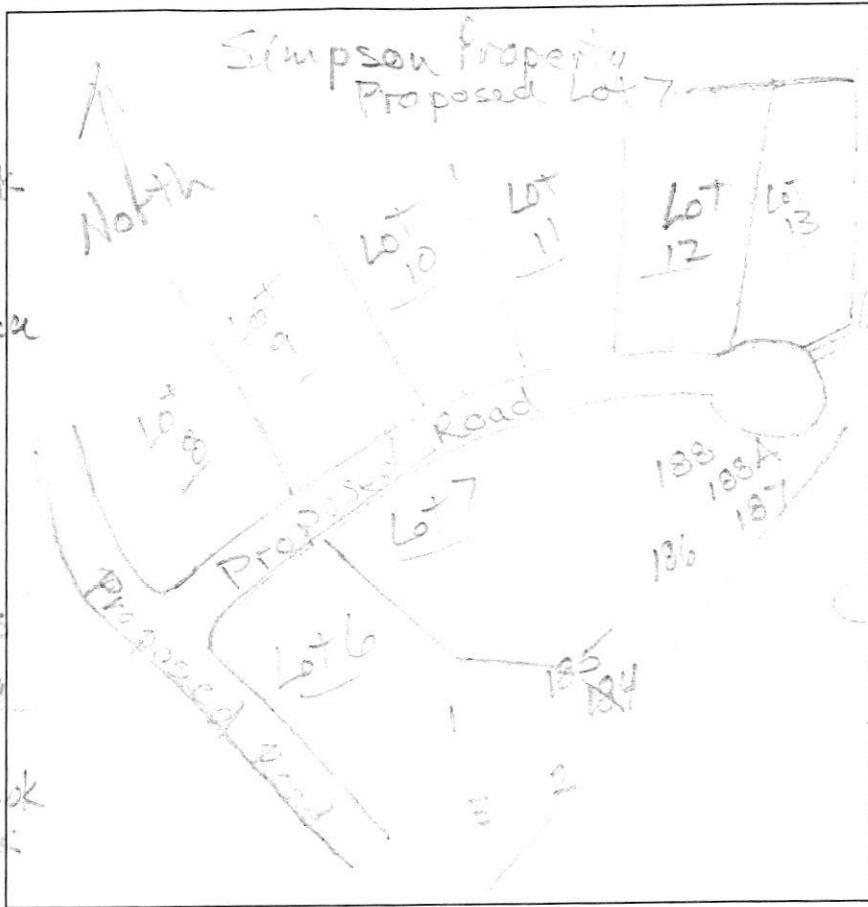
2 & 3
0.8' dk brn L
brn L, 2 f sbk
brn L, 2 msbk
common mica
1.6' yel-red & brn
L, 1 msbk
2.6' yel-red sl
thick platy
3.5' yel-red & brn
yel-brn sl
thick platy
many mica
9.5' yel-brn chls
com. coarse mica
com. fine mica
thick platy
2'

7
1' dk brn sl
to brn sl, common
mica
2 f sbk
brn L, few
mica
2 msbk to 2 f sbk
2.2' yel-red & brn
sl, thin platy
many mica
3.4' yel-red
& yel-brn ls
many coarse
thin platy
8' yel-brn chls
thick platy
many coarse mica
13'

DATE	TEST #	DEPTH	START	BREAK 1" DROP	STOP 2" DROP	TIME OF 2ND INCH	P/F/H
3/18/15	5	5.5/14'	1:52	1:54	2:00	6	P
3/18/15	3	5.7/12'	2:11	2:14	2:20	6	P
3/18/15	4	5.8/12.2'	2:28	2:32	2:39	7	P
3/18/15	1	5'/13'	2:43	2:45	2:50	5	P
3/18/15	2	6'/14'	2:55	2:57	3:02	5	P

#2
Similar
to #3
but dug
to 14'

REMARKS _____
 SANITARIAN R Bricker BACKHOE Hatfields OTHERS Art Leonard
Eric Van Slyke
 TEST HOLES USED IN SDA _____ AVG. PERC TIME _____ SQ. FT/BR _____
 TRENCH WIDTH _____ INLET DEPTH _____ MAX. BOT DEPTH _____ EFFECTIVE SW _____



12' dk brn L, 2' sbk
brn L, 2' sbk
yel-red L, 2' sbk
common mica
3' yel-red sl
thick platy
many mica
3.5' yel-red ls
thick platy
many mica
5' yel-red
ls
thick platy
many mica
12'

187
dk brn L, 2' sbk
brn L, 2' sbk
brn L, 2' sbk
few mica
brn vch sl
thick platy
45% rock
3.7' yel-red
dk brn
ch sl, thick
platy

5' dk brn, dk brn
yel-red chls
red-ye
brn ls, thin
platy
many mica
12.5' vch grey brn
ls, 40-50% rock
14'

188A
dk brn L, 1' sbk
brn L, 1' sbk
brn L, 1' sbk
few mica, channel

3.2' red-ye & brn
sl, thick platy
common mica
few channels
4.5' red-ye & yel-red
dk brn & pale brn
ls
many mica
thick platy
10.8' saturated
red-ye ls
11' water level

DATE	TEST #	DEPTH	START	BREAK 1" DROP	STOP 2" DROP	TIME OF 2ND INCH	P/F/H
7/8/15	184	6' 12"	9:54	9:56	9:59	3	P
7/8/15	186	4.5' 12"	10:08	10:11	10:14	3	P
7/8/15	188	4' 7.7"	10:19	10:21	10:23	2	H
7/8/15	187	4.3' 10.5"	10:43	10:50	pulled, reshelf		
	187	6' 12.5"	10:56	11:03	pulled, reshelf		
	187	8.2' 10.5"	11:02	11:10	11:13	3	P
7/8/15	188A	5.8' 10.5"	11:18	11:20	11:23	3	P
7/8/15	185	5.3' 11"	11:36	11:38	11:41	3	P

186
dk brn L, 2' sbk
brn L, 2' sbk
red-ye sl
thick platy
common mica
3' yel-red & brn
ls, thick
platy
many mica
12'

188
dk brn sl
1' sbk
1.2' brn L, 1' sbk
brn L, 2' sbk
few mica
2.5' brn & red sl
thick platy
many mica
3' brn & red ls
thin platy, many mica
4.8' grey-brn
& yel-red chls
thick platy, many mica
7.7'

REMARKS _____
 SANITARIAN Bricker BACKHOE Mat Lieb's OTHERS Art Leonard
 TEST HOLES USED IN SDA _____ AVG. PERC TIME _____ SQ. FT/BR _____
 TRENCH WIDTH _____ INLET DEPTH _____ MAX. BOT DEPTH _____ EFFECTIVE S/W _____

Saturated ^{Some coarse} grey-brn ls / 8.0' sidewall failure
 8.2' visible water seeps