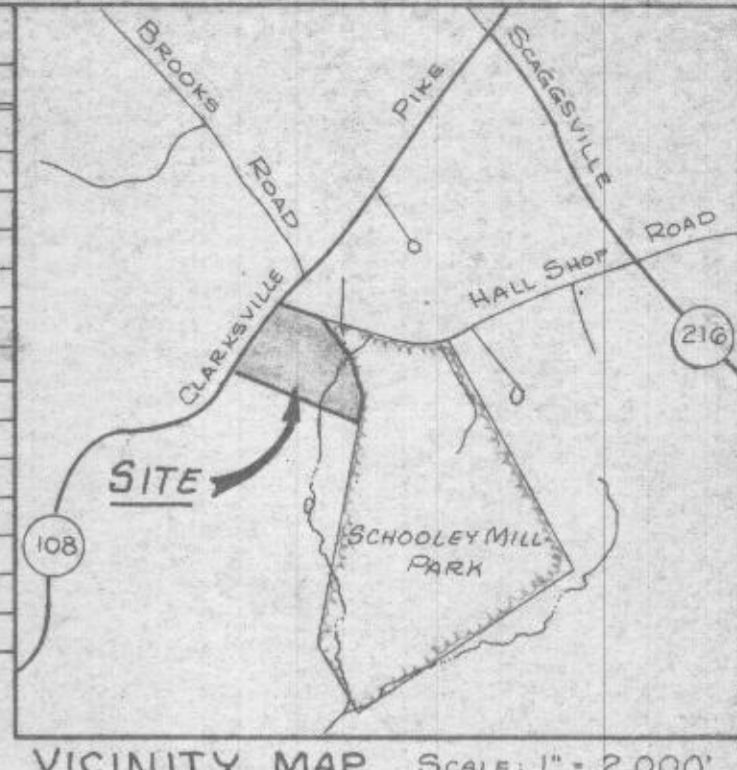


LEGEND CONT.

- △ INDICATES PROP. WELL LOCATION
- ▨ THIS AREA DESIGNATES A PRIVATE SEWAGE BASEMENT OF 10000 SF, AS REQUIRED BY THE MD. STATE DEPT. OF HEALTH AND MENTAL HYGIENE FOR INDIVIDUAL SEWAGE DISPOSAL IMPROVEMENT OF ANY NATURE IN THIS AREA IS RESTRICTED UNTIL PUBLIC SEWAGE IS AVAILABLE. THESE EASEMENTS SHALL BECOME NULL AND VOID UPON CONNECTION TO A PUBLIC SEWAGE SYSTEM. THE COUNTY HEALTH OFFICER SHALL HAVE AUTHORITY TO GRANT VARIANCES FOR ENCROACHMENTS INTO THE PRIVATE SEWAGE BASMT. RECREATION OF A MODIFIED SEWAGE EASEMENT SHALL NOT BE NECESSARY.

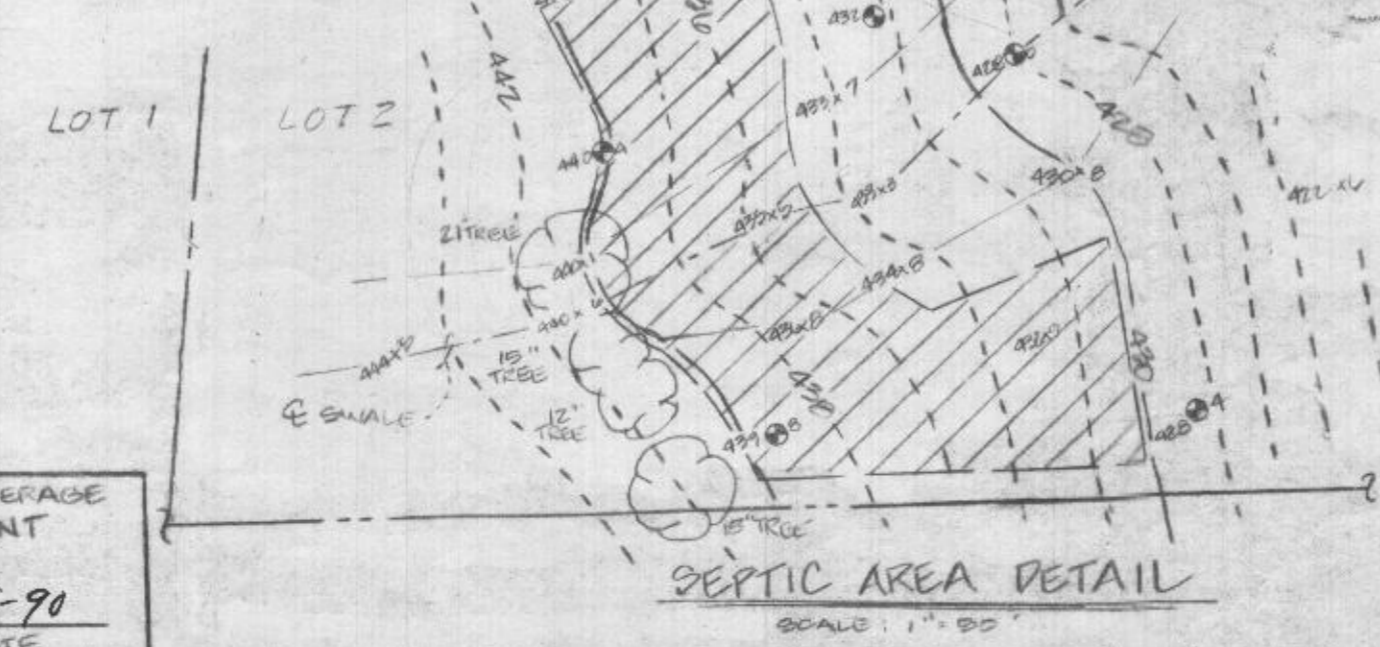
COORDINATE TABLE		
NO.	NORTHING	EASTING
1	487,035.6089	810,203.9461
2	485,644.401	810,862.890
3	485,282.5585	810,412.4785
4	486,346.4160	809,165.4291
5	486,669.2012	809,366.6185
6	486,919.6396	809,526.2732
7	487,145.5626	809,706.0935
8	487,001.2966	810,220.1981
9	487,056.2897	809,971.1985
10	487,099.6372	809,774.9281
11	487,085.4682	809,734.9476
12	486,884.7346	809,575.1765
13	486,637.2050	809,417.3761
14	486,307.0391	809,211.5864



LEGEND

- INDICATES CONCRETE MONUMENT
- INDICATES IRON PIPE OR IRON BAR
- ∇ INDICATES WETLAND AREA

- NOTES**
- 1) SOIL TYPES SHOWN HEREON ARE AS PER THE JULY, 1968 SOIL SURVEY OF HOWARD COUNTY. PROPERTY SHOWN HEREON IS LOCATED ON PAGE 20 OF SAID SURVEY.
 - 2) PERC TESTS INDICATED THUS ⊕ WERE FIELD LOCATED BY KIDDE CONSULTANTS INC. ON 2.2.89
 - 3) ○ INDICATES PROPOSED PERC TESTS.



CAP 11-15-90 REV. HSE. LOC.
 CAP 1-4-90 REV. TO H.D. COMMENTS
 SK 11-3-89 REV. PERC. LOC. NOT 2

OWNER/DEVELOPER
WARREN MATZEN
BELTSVILLE, MD 20705

PLAT OF PERCOLATION
LOTS 1 & 2

MAT-PET ESTATES

TAX MAP 40, PARCEL 43
FIFTH ELECTION DISTRICT
HOWARD COUNTY, MARYLAND

SCALE: 1" = 100' DATE: SEPT 21, 1989 SHEET 1 OF 1

KIDDE CONSULTANTS, INC.
1100 WEST STREET SUITE 100
LAUREL, MARYLAND 20707

BALTIMORE (301) 792-8086 WASHINGTON (301) 953-1821

APPROVED: FOR PRIVATE WATER & PRIVATE SEWAGE SYSTEMS HOWARD COUNTY HEALTH DEPARTMENT

Juan Boyda 2-5-90
 HW COUNTY HEALTH OFFICER DATE

? assume @ 1-31-90 transmitted