

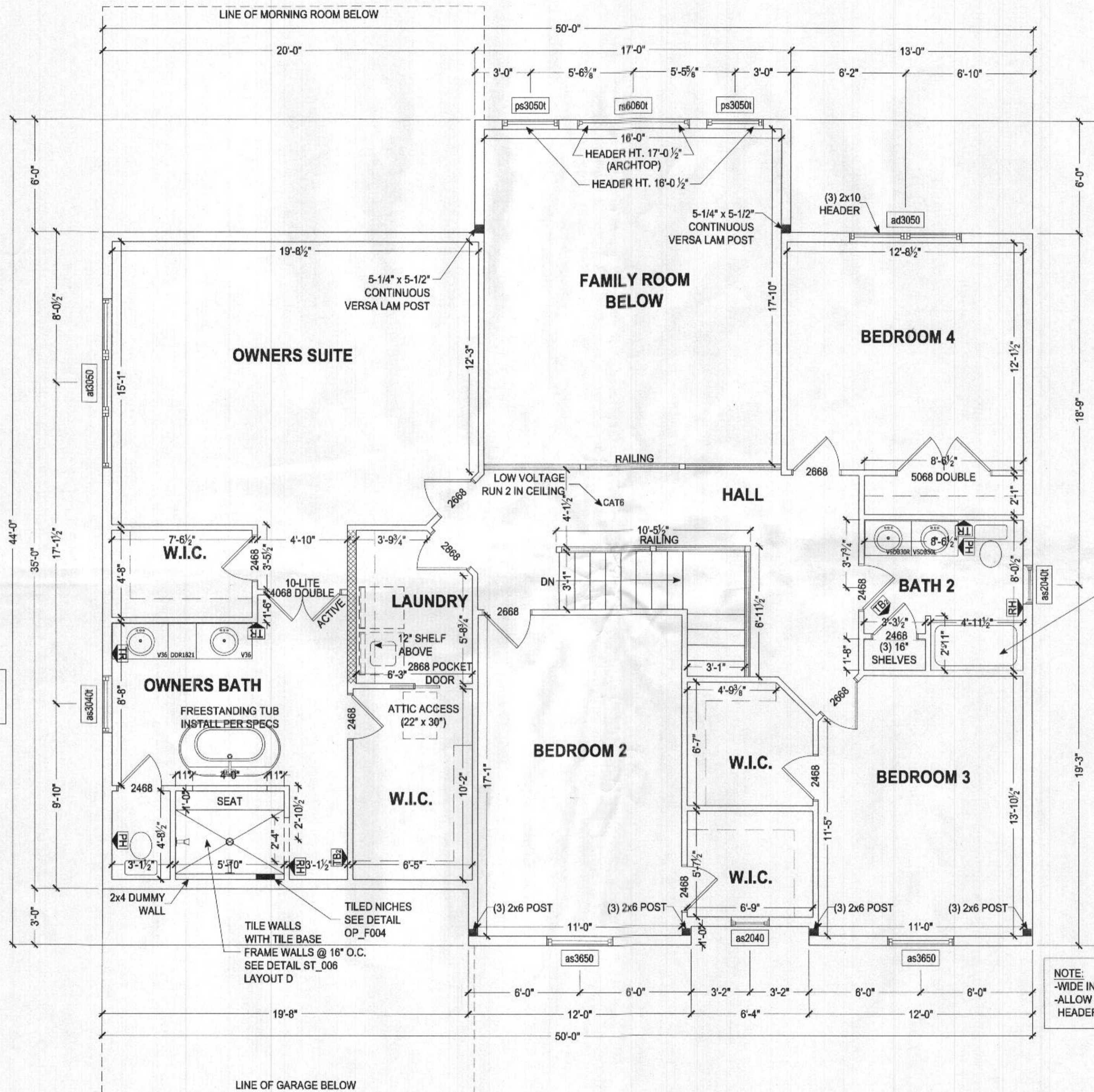
ALL EXTERIOR WALLS ARE 100% CONTINUOUS STRUCTURAL SHEATHING (METHOD #3, PER ST_112)

GYPSUM BOARD, TWO SIDES (METHOD #5, PER ST_111)

INTERIOR HALF WALL

2 x 6 INTERIOR WALL

FRAMING POST



SQUASH BLOCKS REQUIRED IN FLOOR FRAMING UNDER ALL POST LOADS SAME SIZE AS POST

NOTE:
-WIDE INTERIOR TRIM PACKAGE
-ALLOW 4" FOR ALL WINDOW/DOOR HEADER TRIM

SECOND FLOOR PLAN
SCALE: 1/4" = 1'-0"



Professional Certification. I hereby certify that these documents were prepared or approved by me, and that I am a duly licensed professional engineer under the laws of the State of Maryland, License No. 50358, Expiration Date: 12-12-2022

The architectural design, drawings, and content of this firm is the property of Keystone Custom Homes, Inc. and is protected under copyright law. Reproduction in any form without express written consent is strictly prohibited. All copyrighted works are protected by United States Copyright Law (Title 17, United States Code) and the Berne Convention for the International Protection of Literary and Artistic Works. Federal and International Copyright protection laws extend to original and modified derivative plans, architectural works, concepts and designs, and is applicable to international and non-international infringements, and provides for specific statutory damages both civil and criminal.

227 GRANITE RUN DRIVE, SUITE 100
LANCASTER, PENNSYLVANIA 17601
PH: (717) 464-9060 • FAX: (717) 464-9046
www.keystonecustomhomes.com



KEYSTONE CUSTOM HOMES, INC.

SHEET DESCRIPTION	SECOND FLOOR PLAN
MODEL	ZHOFR2 SCHUCK
UPDATED:	OCT 11 2021
SCALE:	AS NOTED
DRAWN BY:	T. BEMONT
SHEET NO.	P1.1
DATE	10/13/2021
SCALE	1/4" = 1'-0"

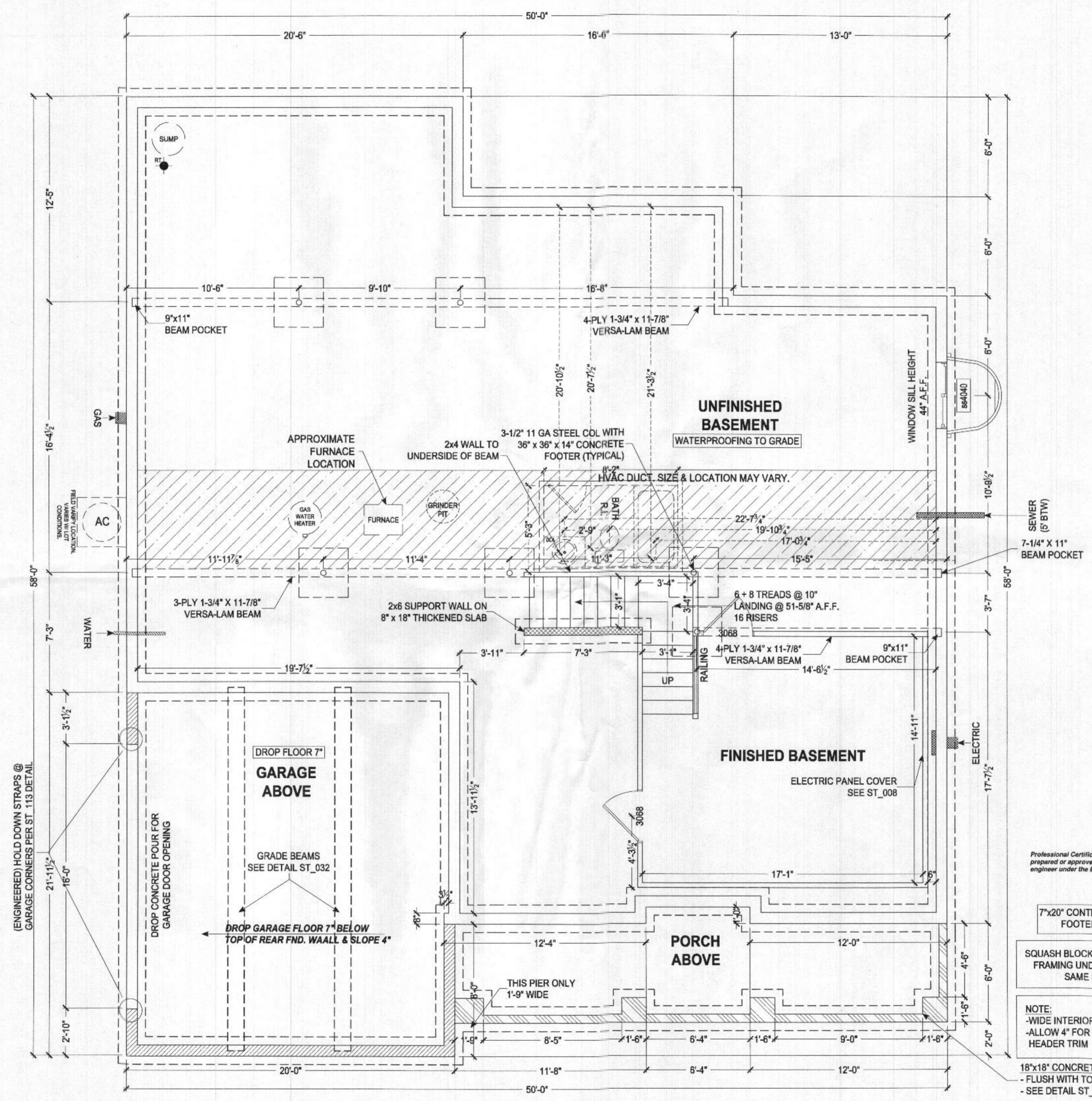
The architectural design, drawings, and content of this firm is the property of Keystone Custom Homes, Inc. and is protected under copyright law. Reproduction in any form without express written consent is strictly prohibited. All copyrighted works are protected by United States Copyright Law (Title 17, United States Code) and the Berne Convention for the International Protection of Literary and Artistic Works. Federal and International Copyright protection laws extend to original and modified drawings, plans, architectural works, concepts and designs, and is applicable to international and ornamental infringements, and provides for specific statutory damages both civil and criminal.

227 GRANITE RUN DRIVE, SUITE 100
LANCASTER, PENNSYLVANIA 17601
PH: (717) 464-9060 • FAX: (717) 464-9046
www.keystonecustomhomes.com



KEYSTONE CUSTOM HOMES, INC.

FOUNDATION PLAN
ZHOFR2
SCHUCK
OCT 11 2021
AS NOTED
T.BEMONT
P1.2
a h w 20



Professional Certification. I hereby certify that these documents were prepared or approved by me, and that I am a duly licensed professional engineer under the laws of the State of Maryland, License No. 50358, Expiration Date: 12-12-2022

7"x20" CONTINUOUS CONCRETE FOOTER @ 2500 P.S.I.

SQUASH BLOCKS REQUIRED IN FLOOR FRAMING UNDER ALL POST LOADS SAME SIZE AS POST

NOTE:
-WIDE INTERIOR TRIM PACKAGE
-ALLOW 4" FOR ALL WINDOW/DOOR HEADER TRIM

18"x18" CONCRETE PIERS
- FLUSH WITH TOP OF PORCH WALL
- SEE DETAIL ST_024 SHEET E.

NOTE TO HOMEOWNER(S):
LOCATIONS SHOWN FOR HVAC, PLUMBING, AND OTHER MECHANICAL ITEMS WILL BE USED IF POSSIBLE. ACTUAL PLACEMENT OF FURNACE, WATER HEATER, SUMP PIT, ETC. MAY VARY DUE TO INDIVIDUAL SITE REQUIREMENTS.

6" THICK POURED CONCRETE WALLS
9'-0" HIGH MAIN HOUSE BASEMENT WALLS STANDARD
8" THICK POURED CONCRETE WALLS
CHECK P.O. FOR WALL HEIGHT OF CRAWL SPACE AND GARAGE WALLS
6" THICK POURED CONCRETE WALLS
CHECK P.O. FOR WALL HEIGHT OF FRONT PORCH WALLS

FOUNDATION PLAN
SCALE: 1/4" = 1'-0"

NOTE:
HEIGHT OF EXTERIOR WALL-MOUNTED LIGHT FIXTURES TO BE
8'-4" ABOVE THRESHOLD TO CENTER OF ELECTRICAL BOX.
(EXTERIOR LIGHT @ OVERHEAD GARAGE DOOR TO BE
7'-0" ABOVE CONCRETE GARAGE FLOOR TO CENTER OF BOX)

ELECTRICAL LEGEND

The architectural design, drawings, and content of this file is the property of Keystone Custom Homes, Inc. and is protected under copyright law. Reproduction in any form without express written consent is strictly prohibited. All copyrighted works are protected by United States Copyright Law (Title 17, United States Code) and the Berne Convention for the International Protection of Literary and Artistic Works. Federal and International Copyright protection laws extend to original and modified derivative plans, architectural works, concepts and designs, and is applicable to International and United States copyright laws. This document is provided for specific statutory damages both civil and criminal.

227 GRANITE RUN DRIVE, SUITE 100
LANCASTER, PENNSYLVANIA 17601
PH: (717) 464-9060 • FAX: (717) 464-9046
www.keystonecustomhomes.com



KEYSTONE CUSTOM HOMES, INC.

ELECTRICAL
SHEET DESCRIPTION: ZHOFR2
MODEL: SCHUCK
UPDATED: OCT 11 2021
SCALE: AS NOTED
DRAWN BY: T.BEMONT
SHEET NO. E1.0
PLAN ID: a h w 20

LIGHTING				RECEPTACLES STD. RECEPTACLES: ARC FAULT / TAMPER RESISTANT		SWITCHES		UTILITY	
	CEILING MOUNTED		KEYLESS FIXTURE		DUPLEX	\$	SINGLE POLE		SMOKE DETECTOR
	WALL MOUNTED		FLUORESCENT	220 	220 VOLT	3 \$	THREE-WAY		CARBON MONOXIDE/ SMOKE DETECTOR
WS 	WALL SCONCE		PENDANT	GFI 	GROUND FAULT INTERRUPT	4 \$	FOUR-WAY		TELEVISION JACK
	DOUBLE HEAD FLOODLIGHT		RECESSED	WP 	WEATHERPROOF GFI	DM \$	DIMMER		RCA JACK
MS 	DOUBLE HEAD FLOODLIGHT W/ MOTION SENSOR	E 	RECESSED EYEBALL	GDO 	GARAGE DOOR OPENER (CEILING)	CL \$	CANDLE LIGHT CIRCUIT		TELEPHONE JACK
	WALL LANTERN	S 	RECESSED SHOWER	D 	DEDICATED INDEPEND. CIRCUIT	WC \$	CANDLE, WINDOW MOUNTED SYSTEM		NETWORK JACK
RI 	ROUGH-IN BOX (CAPPED OFF)	X 	RECESSED EXTERIOR	MW 	MICROWAVE			KEYPAD	GARAGE DOOR OPENER KEYPAD
	EXHAUST FAN		EXHAUST FAN, HEAT LAMP	CL 	CANDLE LIGHT			SPKR-RI	SPEAKER ROUGH-IN
	EXHAUST FAN WITH LIGHT		EXHAUST FAN WITH LIGHT AND FORCED HOT AIR	SO 	SECURITY SYSTEM			SPKR-HR	SPEAKER HOME RUN
	CEILING FAN		CEILING FAN, ROUGH-IN	Q 	QUADRUPLE				
				F 	FLOOR MOUNTED				

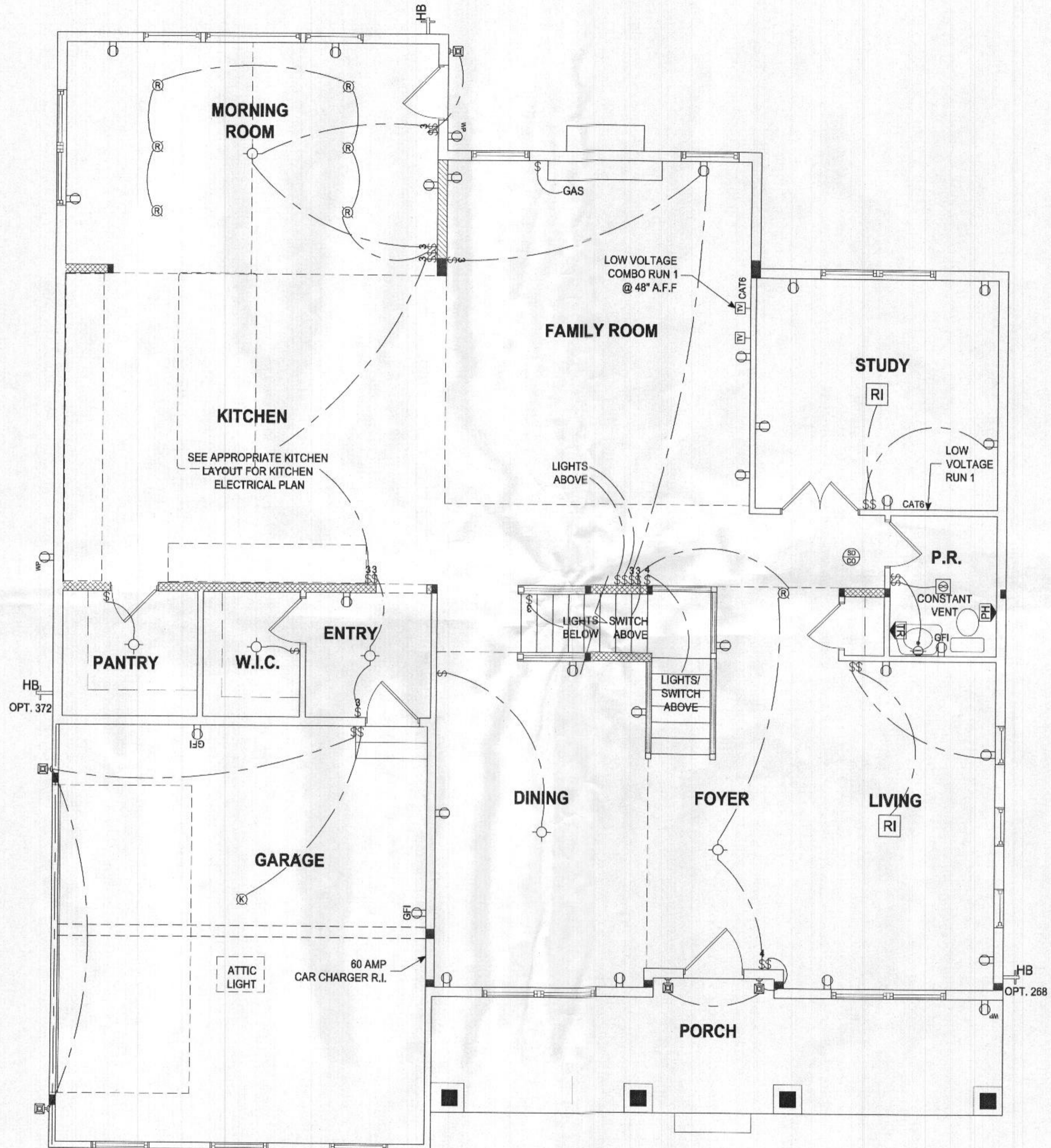
ELECTRICAL LEGEND
NO SCALE

NOTE TO HOMEOWNER(S):
LOCATIONS SHOWN FOR LIGHTS, RECEPTACLES, AND OTHER ELECTRICAL DEVICES ARE APPROXIMATE.
ACTUAL LOCATIONS TO BE DETERMINED BY AN ELECTRICIAN BASED ON SITE CONDITIONS INCLUDING
CONSTRAINTS OF FRAMING, HVAC PLACEMENT, ETC.
LOCATIONS WILL ALWAYS MEET OR EXCEED THE MINIMUM REQUIREMENTS OF THE NATIONAL ELECTRIC CODE.

Professional Certification. I hereby certify that these documents were prepared or approved by me, and that I am a duly licensed professional engineer under the laws of the State of Maryland, License No. 50358, Expiration Date: 12-12-2022



NOTE:
 HEIGHT OF EXTERIOR WALL-MOUNTED LIGHT FIXTURES TO BE
 6'-0" ABOVE THRESHOLD TO CENTER OF ELECTRICAL BOX.
 (EXTERIOR LIGHT @ OVERHEAD GARAGE DOOR TO BE
 7'-0" ABOVE CONCRETE GARAGE FLOOR TO CENTER OF BOX)



NOTE TO HOMEOWNER(S):
 LOCATIONS SHOWN FOR LIGHTS, RECEPTACLES, AND OTHER ELECTRICAL DEVICES ARE APPROXIMATE.
 ACTUAL LOCATIONS TO BE DETERMINED BY AN ELECTRICIAN BASED ON SITE CONDITIONS INCLUDING
 CONSTRAINTS OF FRAMING, HVAC PLACEMENT, ETC.
 LOCATIONS WILL ALWAYS MEET OR EXCEED THE MINIMUM REQUIREMENTS OF THE NATIONAL ELECTRIC CODE.

FIRST FLOOR - ELECTRICAL
 SCALE: 1/4" = 1'-0"



Professional Certification. I hereby certify that these documents were prepared or approved by me, and that I am a duly licensed professional engineer under the laws of the State of Maryland, License No. 50358, Expiration Date: 12-12-2022

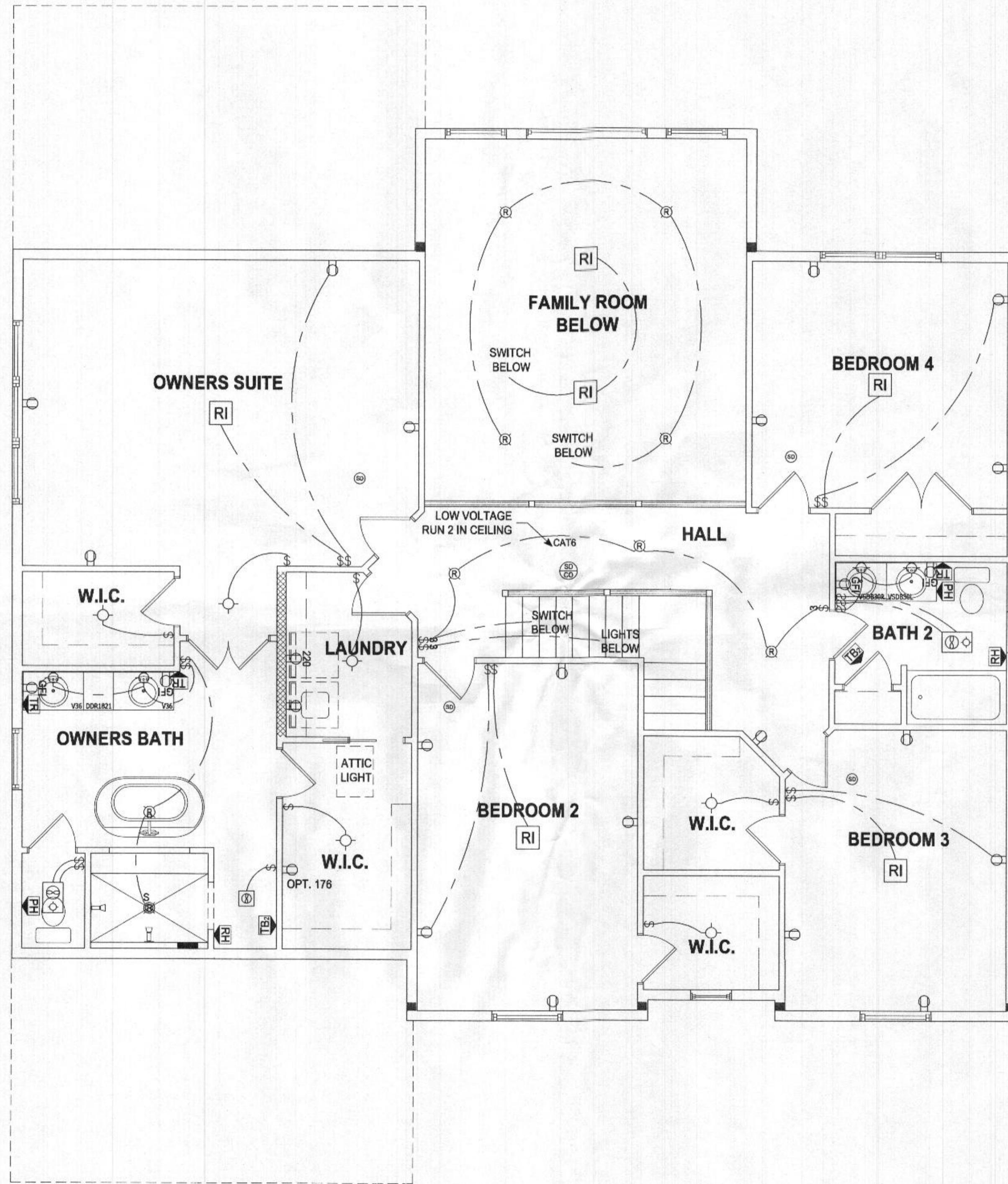
The architectural design, drawings, and content of this firm is the property of Keystone Custom Homes, Inc. and is protected under copyright law. Reproduction is an act without express written consent is strictly prohibited. All copyrighted works are protected by United States Copyright Law (Title 17, United States Code) and the Berne Convention for the International Protection of Literary and Artistic Works. Federal and International Copyright protection laws extend to original and modified derivative plans, architectural works, concepts and designs, and is applicable to international and uninternational infringements, and provides for specific statutory damages both civil and criminal.

227 GRANITE RUN DRIVE, SUITE 100
 LANCASTER, PENNSYLVANIA 17601
 PH: (717) 464-9060 • FAX: (717) 464-9046
 www.keystonecustomhome.com



KEYSTONE CUSTOM HOMES, INC.

SHEET DESCRIPTION	FIRST FLOOR ELECTRICAL
MODEL	ZHOFR2 SCHUCK
UPDATED	OCT 11 2021
SCALE	AS NOTED
DRAWN BY	T. BEMONT
SHEET NO.	E1.1
PLANTED	ahw 20



SECOND FLOOR - ELECTRICAL

SCALE: 1/4" = 1'-0"



Professional Certification. I hereby certify that these documents were prepared or approved by me, and that I am a duly licensed professional engineer under the laws of the State of Maryland, License No. 50358, Expiration Date: 12-12-2022

The architectural design, drawings, and content of this firm is the property of Keystone Custom Homes, Inc. and is protected under copyright law. Reproduction in any form without express written consent is strictly prohibited. All copyrighted works are protected by United States Copyright Law (Title 17, United States Code) and the Berne Convention for the International Protection of Literary and Artistic Works. Federal and International Copyright protection laws extend to original and modified derivative plans, architectural works, concepts and designs, and is applicable to International and uninternational infringements, and provides for specific monetary damages both civil and criminal.

227 GRANITE RUN DRIVE, SUITE 100
LANCASTER, PENNSYLVANIA 17601
PH: (717) 464-9060 • FAX: (717) 464-9046
www.keystonecustomhome.com

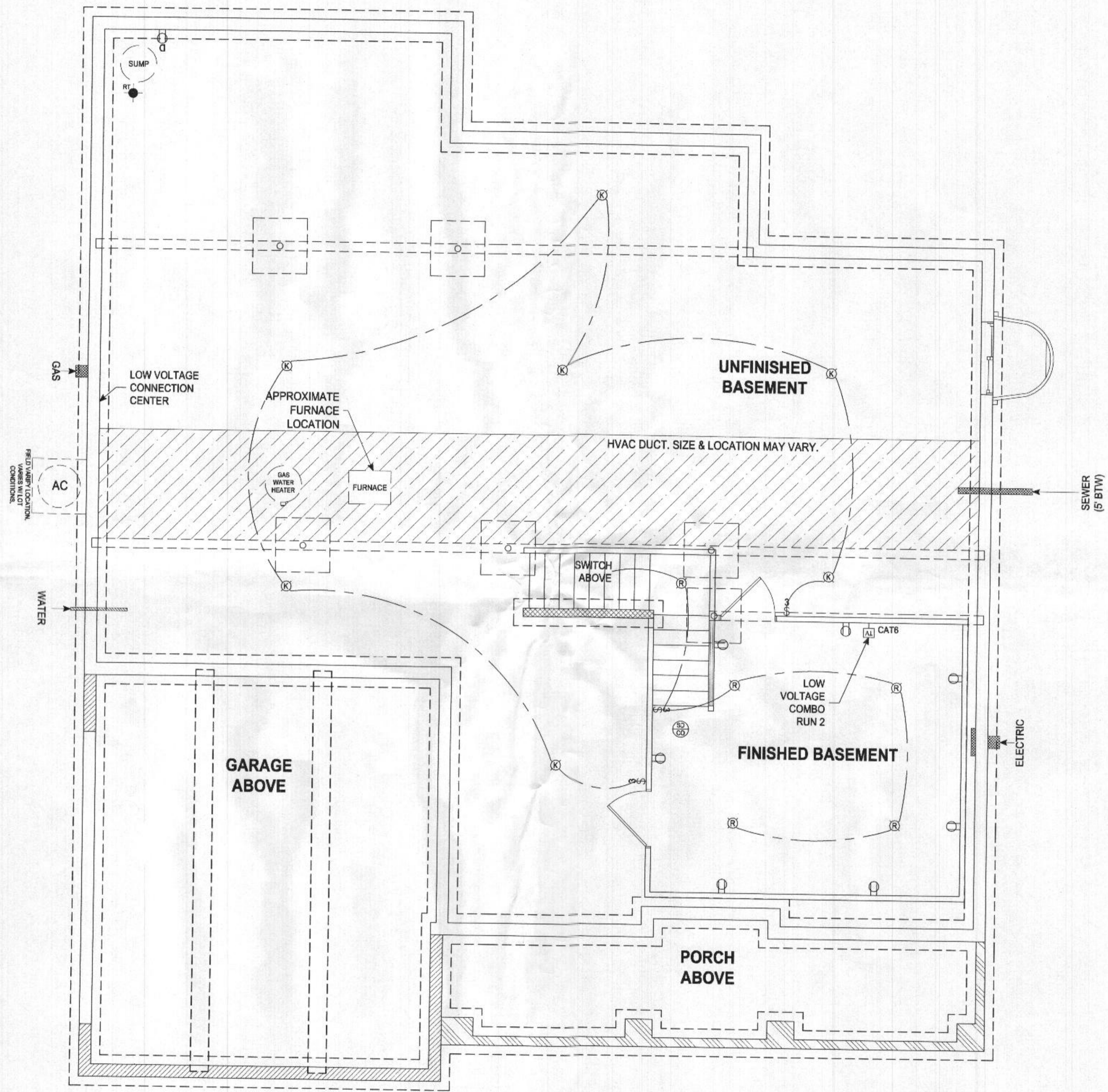


KEYSTONE CUSTOM HOMES, INC.

SHEET DESCRIPTION: SECOND FLOOR ELECTRICAL
MODEL: ZHOFR2 SCHUCK

UPDATED: OCT 11 2021
SCALE: AS NOTED
DRAWN BY: T.BEMONT

SHEET NO. E1.2
PLAN ID. ahw20



FOUNDATION - ELECTRICAL
SCALE: 1/4" = 1'-0"



Professional Certification, I hereby certify that these documents were prepared or approved by me, and that I am a duly licensed professional engineer under the laws of the State of Maryland, License No. 50358, Expiration Date: 12-12-2022

The architectural design, drawings, and content of this firm is the property of Keystone Custom Homes, Inc. and is protected under copyright law. Reproduction in any form without express written consent is strictly prohibited. All copyrighted works are protected by United States Copyright Law (Title 17, United States Code) and the Berne Convention for the International Protection of Literary and Artistic Works. Federal and International Copyright protection laws extend to original and modified drawings, plans, architectural works, concepts and designs, and is applicable to international and unimpaired infringements, and provides for specific statutory damages both civil and criminal.

227 GRANITE RUN DRIVE, SUITE 100
LANCASTER, PENNSYLVANIA 17601
PH: (717) 464-9060 • FAX: (717) 464-9046
www.keystonecustomhome.com



KEYSTONE CUSTOM HOMES, INC.

FOUNDATION ELECTRICAL

ZHOFR2
SCHLUCK

UPDATED:
OCT 11 2021
SCALE:
AS NOTED
DRAWN BY:
T.BEMONT

SHEET NO.
E1.3
PLAN ID
ahw20

The architectural design, drawings, and content of this firm is the property of Keystone Custom Homes, Inc. and is protected under copyright law. Reproduction in any form without express written consent is strictly prohibited. All copyrighted works are protected by United States Copyright Law (Title 17, United States Code) and the Berne Convention for the International Protection of Literary and Artistic Works. Federal and International Copyright protection laws extend to original and modified derivative plans, architectural works, concepts and designs, and is applicable to international and domestic infringements, and provides for specific statutory damages both civil and criminal.

227 GRANITE RUN DRIVE, SUITE 100
 LANCASTER, PENNSYLVANIA 17601
 PH: (717) 464-9060 • FAX: (717) 464-9046
 www.keystonecustomhome.com



KEYSTONE CUSTOM HOMES, INC.

SHEET DESCRIPTION:
 FIRST FLOOR-FLOORING
 MODEL:
 ZHOPR2
 SCHUCK

UPDATED:
 OCT 11 2021
 SCALE:
 AS NOTED
 DRAWN BY:
 T.BEMONT

SHEET NO.
F1.0
 PLAN ID:
 a h w 20



Professional Certification. I hereby certify that these documents were prepared or approved by me, and that I am a duly licensed professional engineer under the laws of the State of Maryland, License No. 50358, Expiration Date: 12-12-2022



FIRST FLOOR - FLOORING
 SCALE: 1/4" = 1'-0"
 FLOORCOVERING AREA
 (NSF = NET SQUARE FOOTAGE)

FLOORING LEGEND	
[Pattern]	= CARPET
[Pattern]	= VINYL
[Pattern]	= VINYL PLANKS
[Pattern]	= CERAMIC TILE
[Pattern]	= WOOD

FLOORING TYPES ARE FOR REPRESENTATION ONLY.
 FLOORING PATTERN & DIRECTION MAY VARY PER HOME