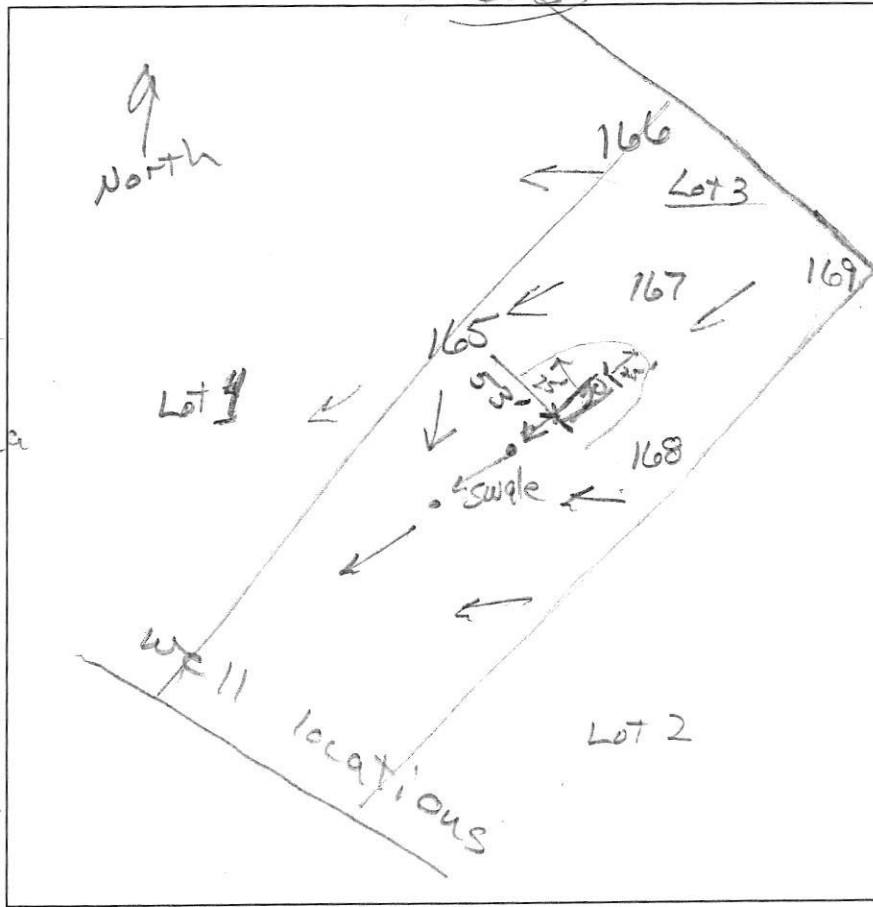


A/P \_\_\_\_\_

167  
 dk brns sl  
 brns sl  
 1.7' brn loam  
 2 m sbk  
 3.7' common mica  
 yel-red sl  
 thin platy  
 common mica  
 4.5' yel-red  
 & brn chls  
 & ss, many  
 mica  
 13'

166  
 dk brns sl  
 brns sl, ss  
 2 m sbk  
 2.5' brns sl  
 1 m sbk  
 3' yel-red  
 & brns sl  
 & m  
 6' grey-brn  
 common  
 byls, mica  
 8' grey-brn  
 15' thick  
 platy  
 many mica  
 13'



169  
 dk brns sl  
 brn L to  
 yel-red L  
 2 m sbk,  
 ss  
 1.5' yel-red L  
 thin platy  
 ss, 10%  
 angular  
 cobbles  
 5.2' yel-red sl  
 thin platy  
 few mica  
 6.5' yel-red sl  
 & m, few  
 mica  
 7.7' grey-brn  
 stls, & m  
 common mica  
 13'

168  
 dk brn L  
 1.8' brn L  
 2 m sbk  
 2.3' brns sl  
 2 m sbk  
 3.5' yel-red  
 sl, thin  
 platy  
 ss  
 4.3' yel-red  
 & brn sl  
 thick platy  
 grey-brn  
 15' thick  
 platy  
 many mica  
 11'

DATE	TEST #	DEPTH	START	BREAK 1" DROP	STOP 2" DROP	TIME OF 2ND INCH	P/F/H
3/3/15	167	5.8' 13'	12:49	12:51	12:55	4	P
3/3/15	166	3.5' 13'	1:07	1:15	1:30	15	P
3/3/15	169	7.3' 12'	1:18	1:39	2:11	32	P
3/3/15	168	5.6' 11'	12:33	12:35	12:37	2	P

REMARKS ss = slightly sticky by = boundary  
street & freezing rain falling while testing #169

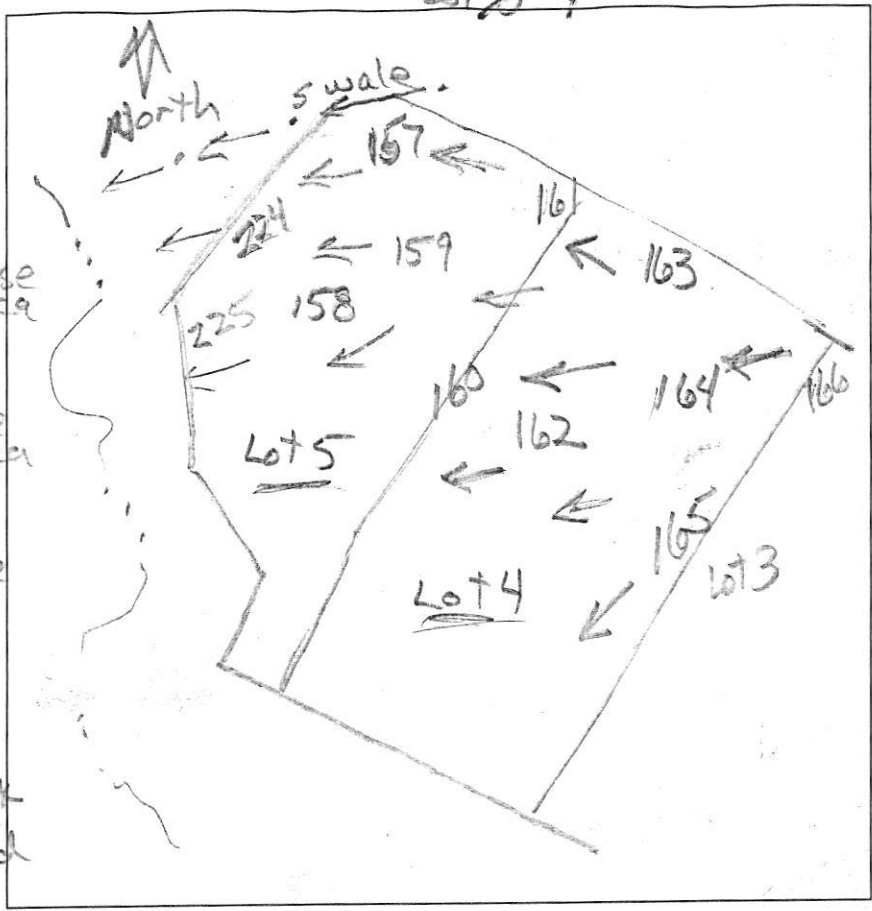
SANITARIAN \_\_\_\_\_ BACKHOE \_\_\_\_\_ OTHERS \_\_\_\_\_

TEST HOLES USED IN SDA \_\_\_\_\_ AVG. PERC TIME \_\_\_\_\_ SQ. FT/BR \_\_\_\_\_

TRENCH WIDTH \_\_\_\_\_ INLET DEPTH \_\_\_\_\_ MAX. BOT DEPTH \_\_\_\_\_ EFFECTIVE SW \_\_\_\_\_

AP

Lot 4



163  
 dk brn sl  
 brn sl  
 2msbk  
 common coarse mica  
 0.9'  
 brn ls  
 thin platy  
 many coarse mica  
 2.4'  
 variegated  
 ls, many  
 coarse mica  
 thin platy  
 11.5'

162  
 dk brn sl  
 brn sl, 2msbk  
 0.7'  
 brn & yel-red  
 sl, 2msbk  
 common mica  
 3'  
 brn & yel-red  
 ls, thin platy  
 many mica  
 12'

164  
 dk brn sl  
 12'  
 brn sl  
 2msbk  
 common mica  
 26'  
 brn ls  
 common mica  
 3.5'  
 thin platy  
 8'  
 grey-brn  
 ls, thin platy  
 12'  
 brn & yel-red  
 chls

165  
 dk brn sl  
 brn sl  
 2msbk  
 1'  
 yel-red sl  
 thin platy  
 clay skins  
 1.9'  
 ss  
 yel-red sl  
 thin platy  
 4.7'  
 brn & yel-red  
 ls, thick  
 platy  
 many mica

168  
 dk brn  
 brn  
 2msbk  
 1.0'  
 brn sl  
 2msbk  
 2.3'  
 yel-red  
 sl, thin  
 platy  
 3.5'  
 ss  
 yel-red  
 & brn sl  
 thick platy  
 4.3'  
 grey brn  
 ls, thick  
 platy  
 many mica  
 11'

DATE	TEST #	DEPTH	START	BREAK 1" DROP	STOP 2" DROP	TIME OF 2ND INCH	P/F/H
3/3/15	163	3.7' / 11.5'	10:44	10:46	10:48	2	P
3/3/15	162	4.2' / 12'	11:40	11:42	11:46	4	P
3/3/15	164	3.7' / 12'	11:54	11:56	12:00	4	P
3/3/15	165	5' / 12.3'	12:10	12:14	12:20	6	P
3/3/15	168	5.6' / 11'	12:33	12:35	12:37	2	P

REMARKS \_\_\_\_\_  
 SANITARIAN R. Bricker BACKHOE Dannie OTHERS Art  
Sarah Collins (Chattfields)  
 TEST HOLES USED IN SDA \_\_\_\_\_ AVG. PERC TIME \_\_\_\_\_ SQ. FT/BR \_\_\_\_\_  
 TRENCH WIDTH \_\_\_\_\_ INLET DEPTH \_\_\_\_\_ MAX. BOT DEPTH \_\_\_\_\_ EFFECTIVE S/W \_\_\_\_\_