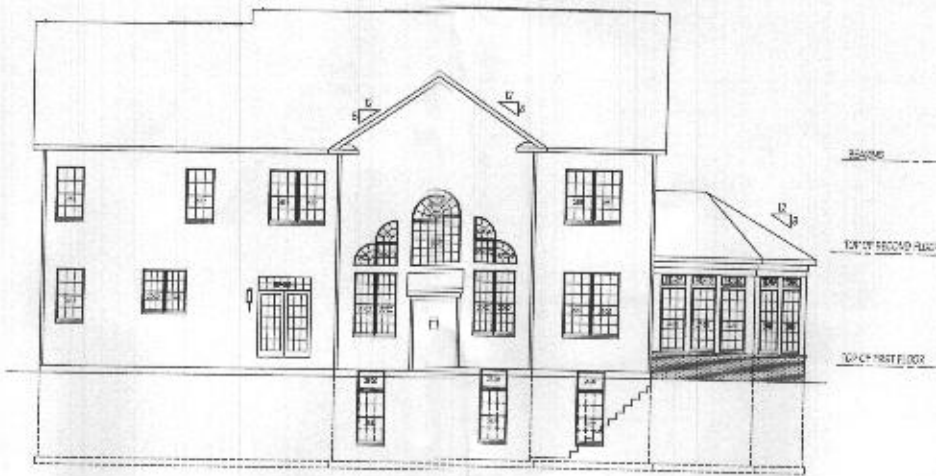
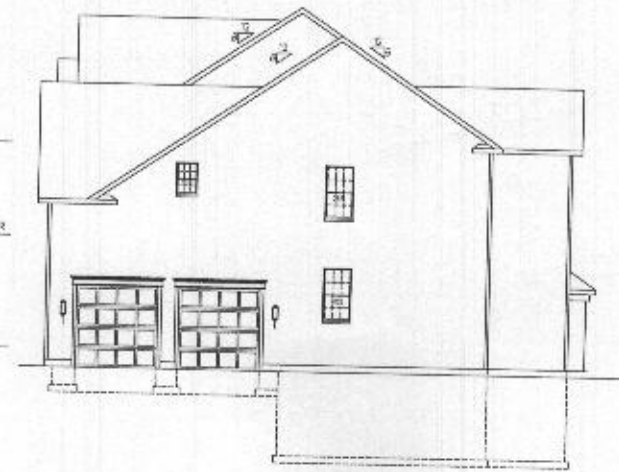


LEFT SIDE ELEVATION 1/8" = 1'-0"
OPTIONAL CONSERVATORY



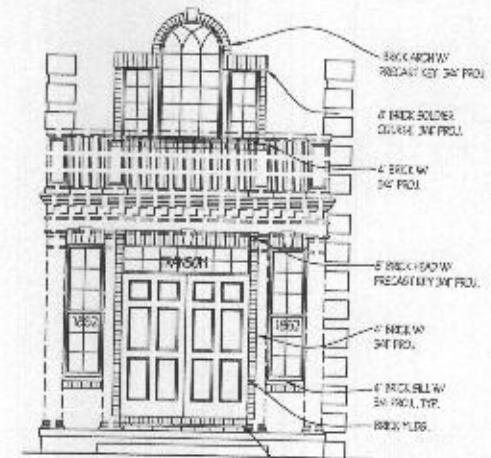
REAR ELEVATION 1/8" = 1'-0"
OPTIONAL WALL OF WINDOWS AND CONSERVATORY



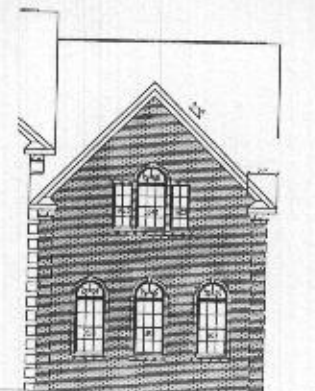
RIGHT SIDE ELEVATION 1/8" = 1'-0"



FRONT ELEVATION 1/4" = 1'-0"
SHOWN WITH OPTIONAL POSTICD PORCH, BRICK VENEER AND CONSERVATORY



FRONT ENTRY 1/4" = 1'-0" BRICK DETAILS



SIDE ELEVATION 1/8" = 1'-0"



ALTERNATIVE FRONT

Plymouth Road Architects
640 Plymouth Road, Caronsville, MD 21229 410-788-0281

DATE	REVISION

Date: 6/15
Scale: NOTED
Drawn: TIM

Drawing: ELEVATION 4
Project: WILLIAMSBURG GROUP
DORCHESTER
ESTATE HOME

1067 D4E
Project No.

1d

REVISED 7/18

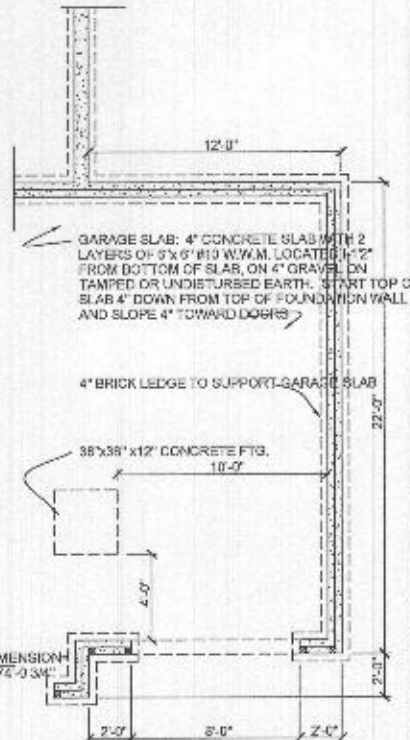
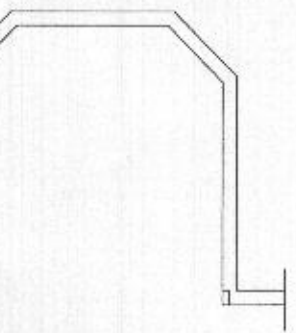
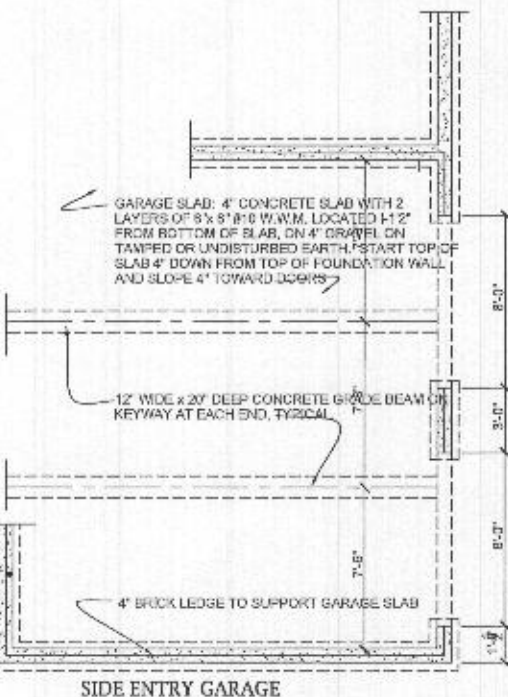
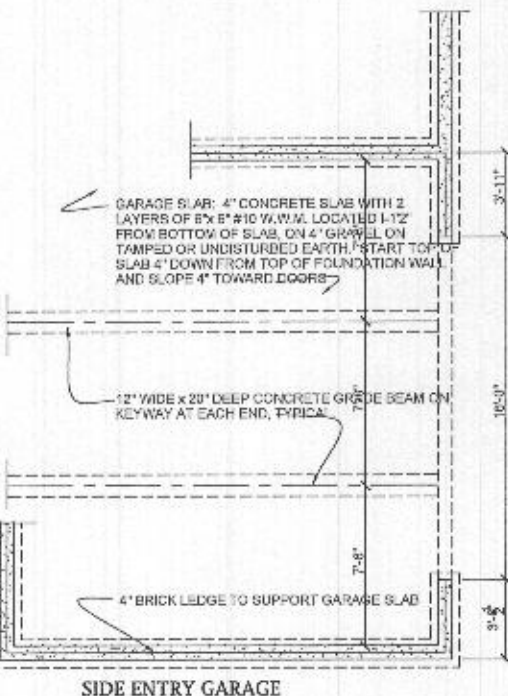
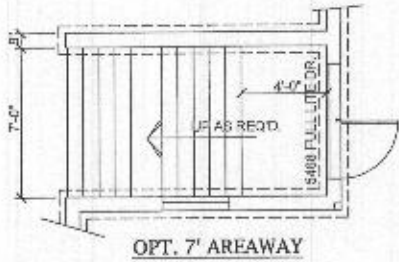
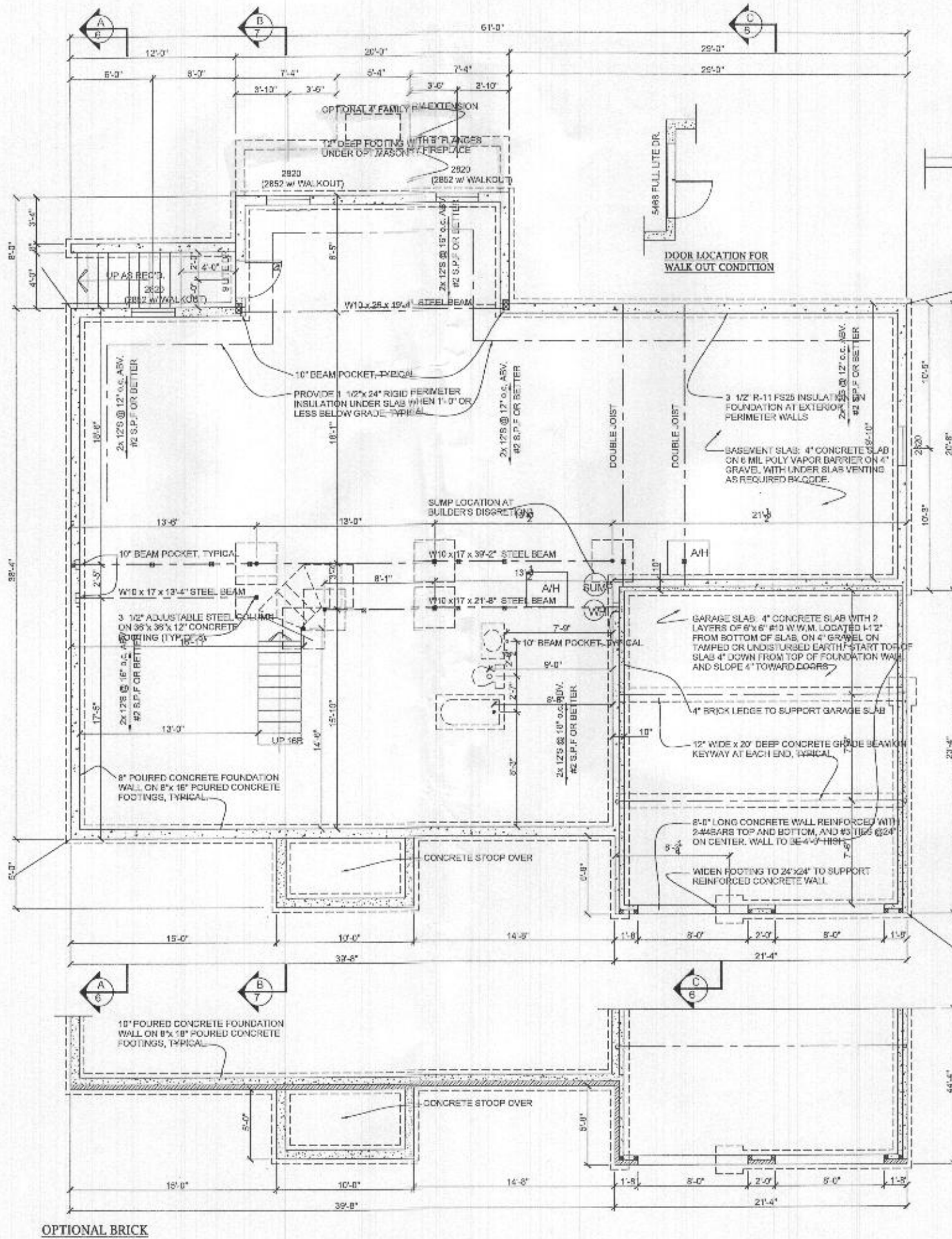
DATE	REVISION	DATE	REVISION
8/15	changed to 16" steel headed garage		

Date: 6/15
 Scale: 1/4" = 1'-0"
 Drawn: TIM

Drawing: BSMT/FOUNDATION PLAN
 Project: WILLIAMSBURG GROUP
 DORCHESTER 4
 ESTATE HOME

1067.D4E
 Project No.

2a

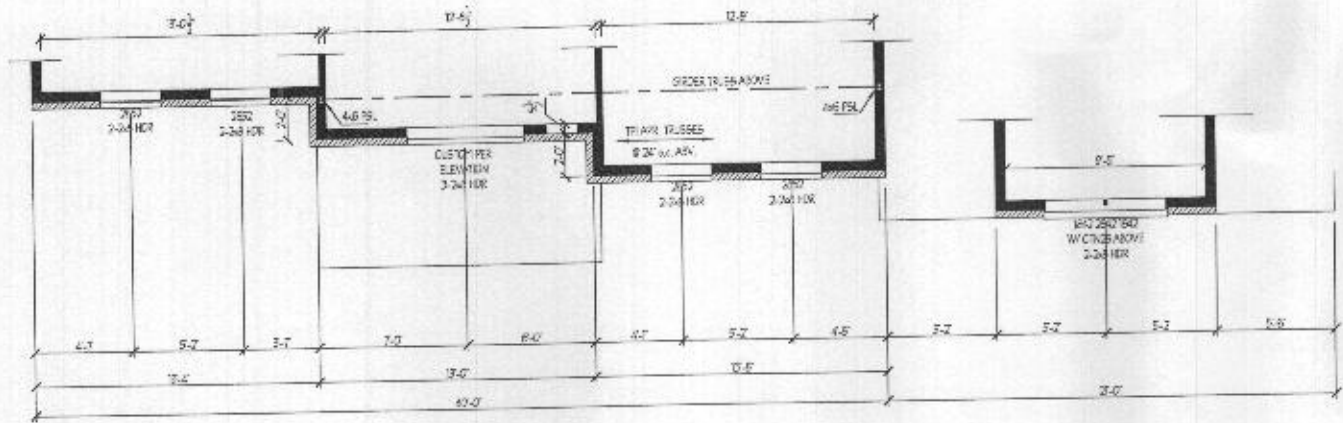


NOTE: SUBSTITUTION OF ENGINEERED I-JOISTS DESIGNED BY OTHERS IN LIEU OF DIMENSIONAL 2x LUMBER SPECIFIED FOR FLOOR FRAMING IS ACCEPTABLE.

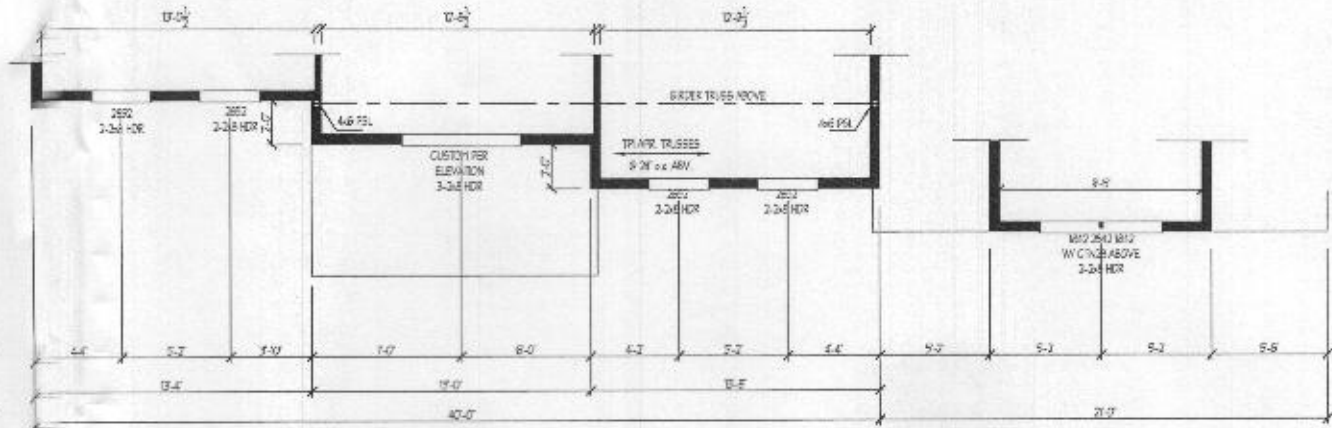
NOT BASEMENT COLUMNS ARE PERMITTED 3 STANDARD STEEL (SCHEDULE 40) PIPE COLUMNS (MAX. 32.4K VERTICAL LOAD W/250PSI CONCRETE, MAX. 48.0K W/3000PSI CONCRETE), 11 GAUGE STEEL CONDUIT PERMITTED.

REVISED 4/21

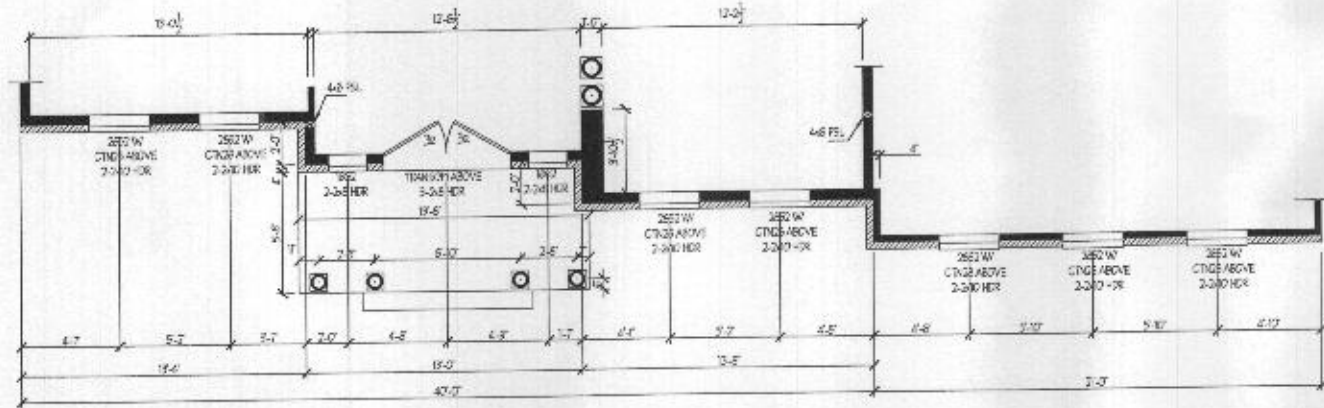
OPTIONAL BRICK



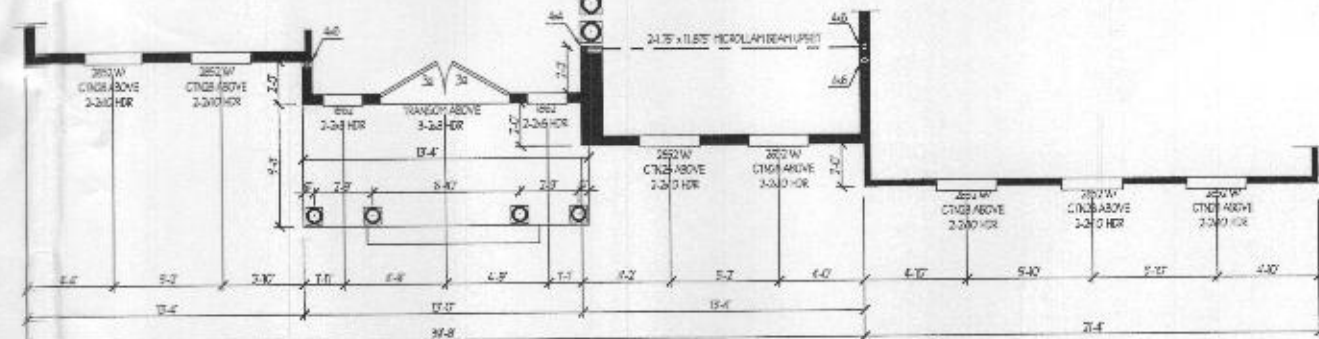
PARTIAL SECOND FLOOR PLAN
ELEVATION 4- BRICK



PARTIAL SECOND FLOOR PLAN
ELEVATION 4- SIDING

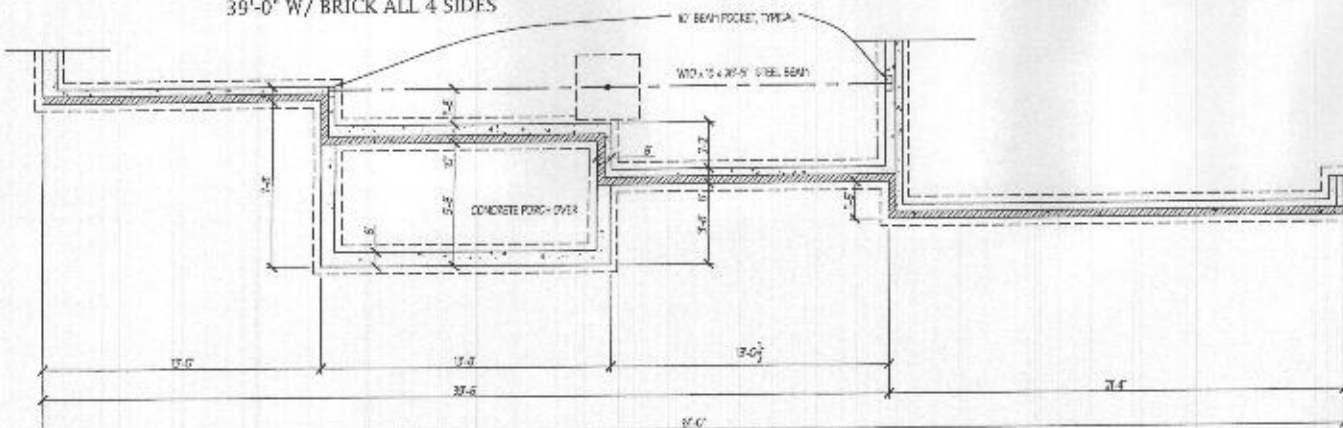


PARTIAL FIRST FLOOR PLAN
ELEVATION 4- BRICK

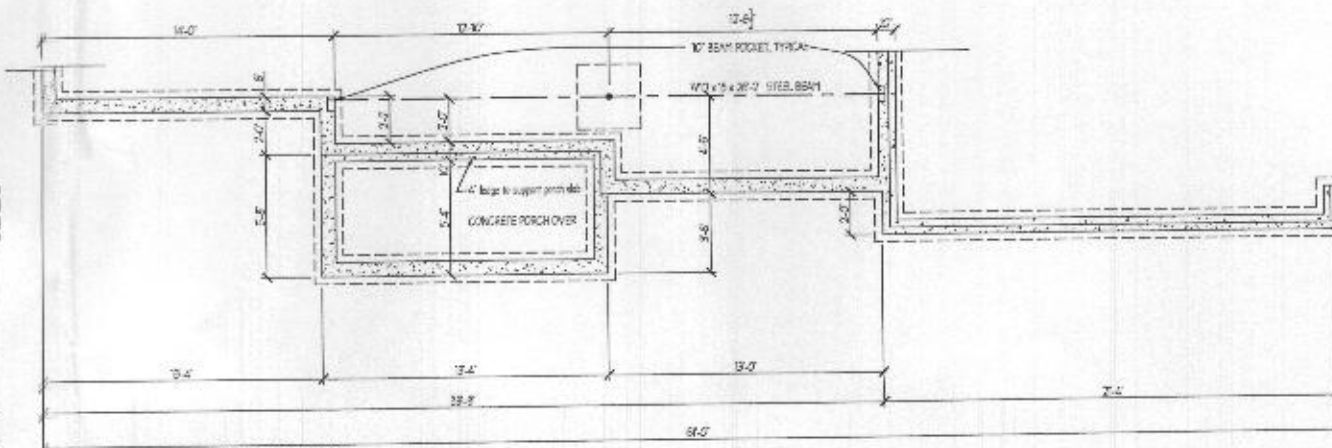


PARTIAL FIRST FLOOR PLAN
ELEVATION 4- SIDING

OVERALL DEPTH - 38'-4"
38'-8\"/>



PARTIAL FOUNDATION PLAN
ELEVATION 4- BRICK



PARTIAL FOUNDATION PLAN
ELEVATION 4- SIDING

DATE	REVISION

Date: 6/15
Scale: 1/4"=1'-0"
Drawn: TIM

Drawing: PARTIAL PLANS- ELEVATION 4
Project: WILLIAMSBURG GROUP
DORCHESTER 4
ESTATE HOME

1067.D4E
Project No.

5d

REVISED 4/21

