

The architect, designer, drafter, and content of this plan is the property of Keystone Custom Homes, Inc. and is protected under copyright law. Reproduction in any form without express written consent is strictly prohibited. All copyright notices are protected by United States Copyright Law Title 17, Section 107. The architect, designer, drafter, and content of this plan is the property of Keystone Custom Homes, Inc. and is protected under copyright law. Reproduction in any form without express written consent is strictly prohibited. All copyright notices are protected by United States Copyright Law Title 17, Section 107.

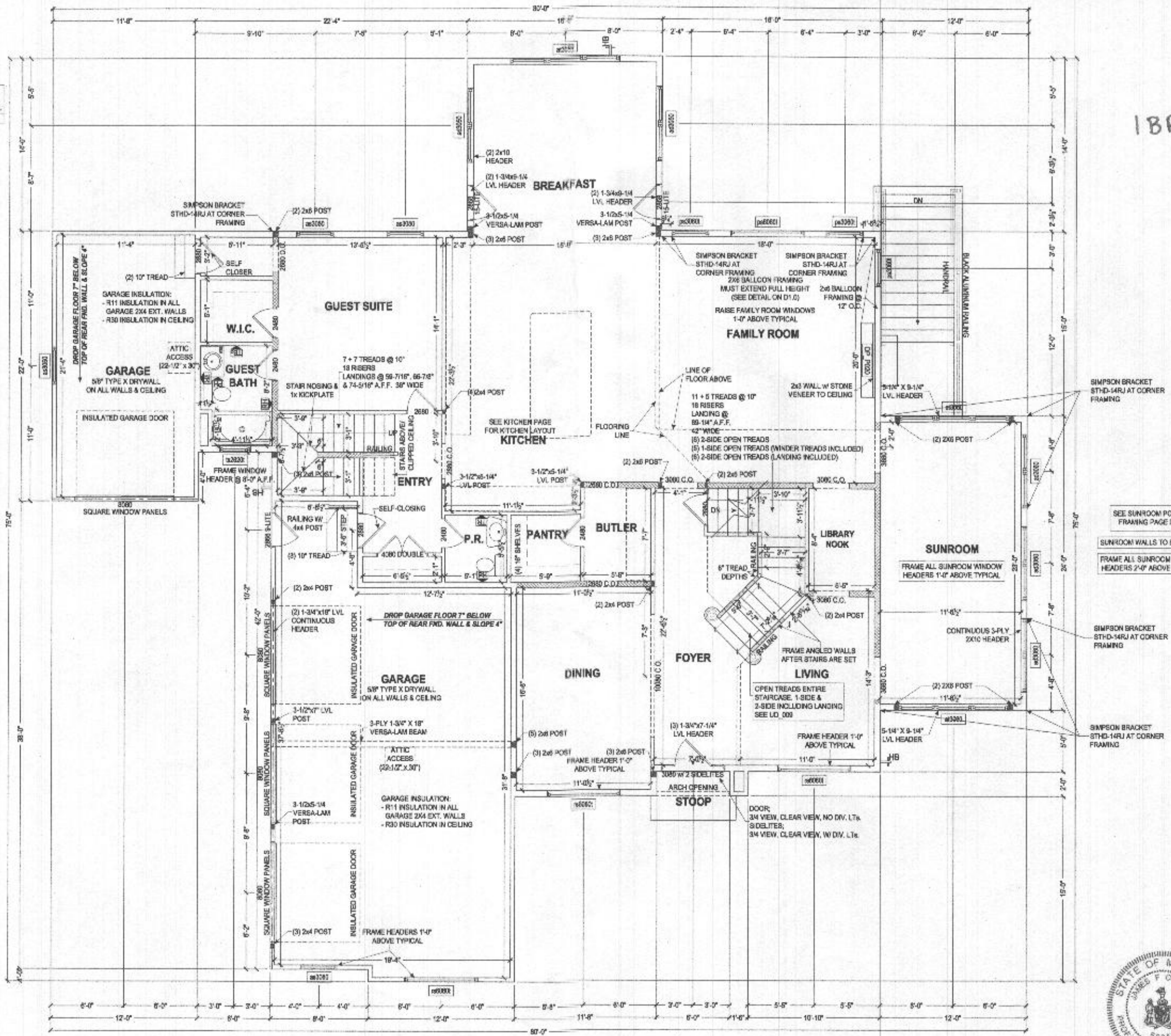
227 GRANITE RUN DRIVE, SUITE 100
LANCASTER, PENNSYLVANIA 17601
PH: (717) 464-9060 FAX: (717) 464-9046
www.keystonecustomhomes.com



KEYSTONE CUSTOM HOMES, INC.

PROJECT DESCRIPTION:	FIRST FLOOR PLAN
DATE:	EAS003
DESIGNER:	EDWARD
DATE:	APR 12 2021
SCALE:	AS NOTED
DRAWN BY:	C.FOX
CHECKED BY:	
DATE:	04/12/2021
PROFESSIONAL CERTIFICATION:	Professional Certification. I hereby certify that these documents were prepared or approved by me, and that I am a duly licensed professional engineer under the laws of the State of Maryland, License No. 55358, Expiration Date: 12-12-2022
SHEET NO.:	P1.0
TOTAL SHEETS:	acv 30

1BR

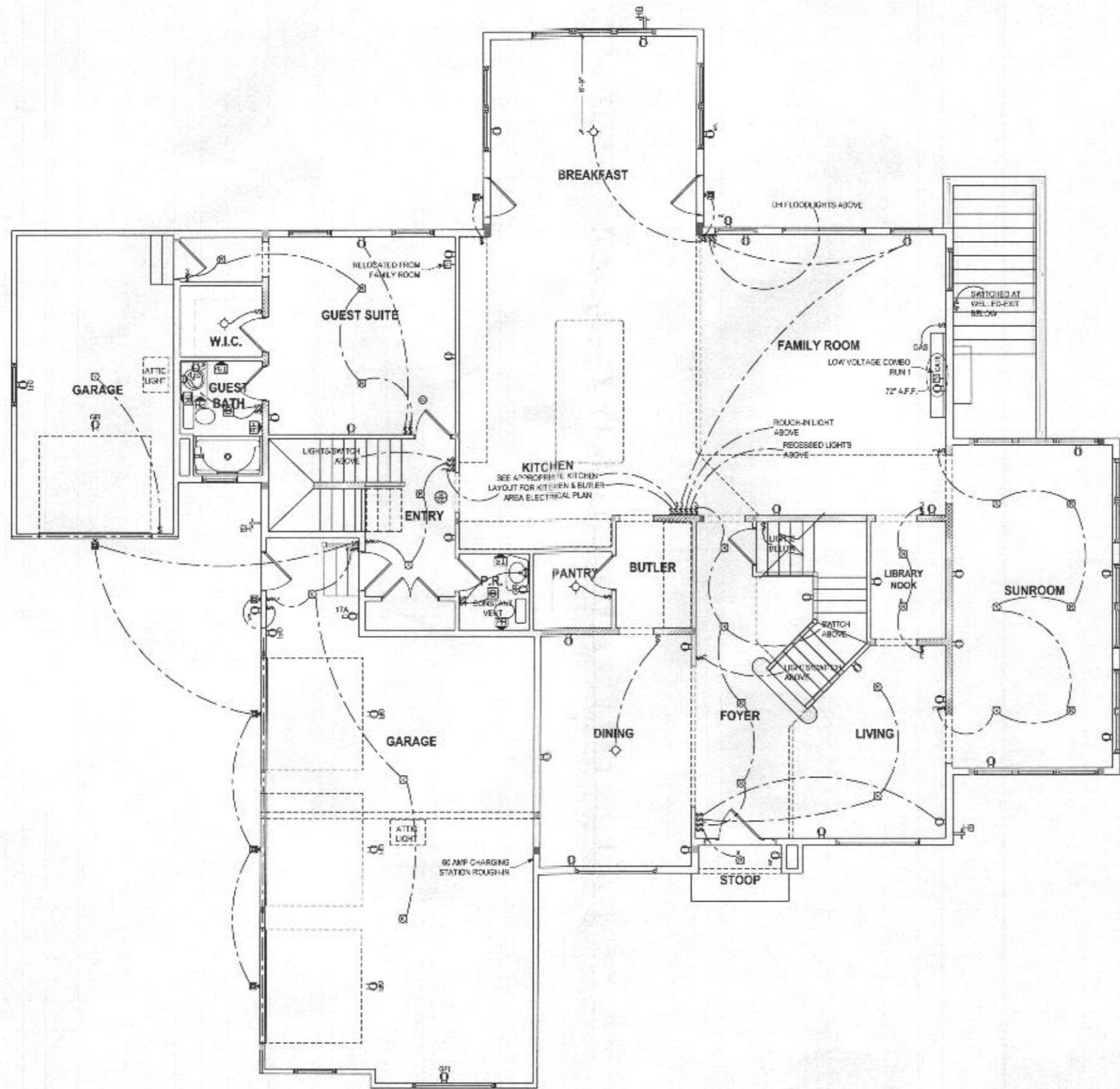


ALL EXTERIOR WALLS ARE 100% CONT. STRUCTURAL SHEATHING (METHOD XL PER ST. 112)
GYPSUM BOARD, TWO SIDES
METHOD #2 PER ST. 111

FIRST FLOOR PLAN
SCALE: 3/16" = 1'-0"

Professional Certification. I hereby certify that these documents were prepared or approved by me, and that I am a duly licensed professional engineer under the laws of the State of Maryland, License No. 55358, Expiration Date: 12-12-2022

NOTE:
 HEIGHT OF EXTERIOR WALL-MOUNTED LIGHT FIXTURES TO BE
 5'-0" ABOVE FINISHED TO CENTER OF ELECTRICAL BOX.
 EXTERIOR LIGHT & OVERHEAD GARAGE DOOR TO BE
 4'-0" ABOVE CONCRETE GARAGE FLOOR TO CENTER OF BUSH



NOTE TO CONDUCTOR:
 LOCATIONS SHOWN FOR LIGHTS, RECEPTACLES, AND OTHER ELECTRICAL DEVICES ARE APPROXIMATE.
 ACTUAL LOCATIONS TO BE DETERMINED BY AN ELEC. TECH. PRIOR TO CONSTRUCTION BASED ON SITE CONDITIONS INCLUDING
 CONSTRUCTION OF WALLS, FLOOR PLACEMENT, ETC.
 LOCATIONS WILL ALWAYS MEET OR EXCEED THE MINIMUM REQUIREMENTS OF THE NATIONAL ELECTRICAL CODES

FIRST FLOOR - ELECTRICAL
 SCALE 3/8" = 1'-0"

The electrical design, drawings, and specifications are the property of Keystone Custom Homes, Inc. and are prepared under contract for the client. No part of this document may be reproduced, stored in a retrieval system, or transmitted in any form or by any means, electronic, mechanical, photocopying, recording, or by any information storage and retrieval system, without the prior written permission of Keystone Custom Homes, Inc. All copyright and other rights are reserved by Keystone Custom Homes, Inc. This document is the property of Keystone Custom Homes, Inc. and is not to be used for any other project without the prior written permission of Keystone Custom Homes, Inc. All rights reserved. Keystone Custom Homes, Inc. is a registered professional engineering firm in the State of Maryland. License No. 10358. Expiration Date: 12-31-2021.

227 GRANITE RUN DRIVE, SUITE 100
 LANCASTER, PENNSYLVANIA 17601
 PH: (717) 464-9060 • FAX: (717) 464-9046
 www.keystonecustomhomes.com



KEYSTONE CUSTOM HOMES, INC.



Professional Certification: I hereby certify that these documents were prepared or approved by me, and that I am a duly licensed professional engineer under the laws of the State of Maryland, License No. 50338, Expiration Date: 12-31-2021.

PROJECT	FIRST FLOOR ELECTRICAL
DATE	JULY 28 2021
SCALE	AS NOTED
DESIGNER	J. HARRIS
CHECKED BY	E.A.S.003 EDWARD
DATE	08-02-2021
PROJECT NO.	E1.1
SCALE	AS NOTED
DATE	08-02-2021

The architectural design, drawings, and contract of this project are the property of Keystone Custom Homes, Inc. and shall remain the property of Keystone Custom Homes, Inc. in whole or in part. No part of this design, drawings, or contract shall be reproduced, stored in a retrieval system, or transmitted in any form or by any means, electronic, mechanical, photocopying, recording, or by any information storage and retrieval system, without the prior written permission of Keystone Custom Homes, Inc. All applicable laws and regulations shall be followed. Keystone Custom Homes, Inc. is not responsible for any errors or omissions in this document. Keystone Custom Homes, Inc. is not a contractor and does not provide construction services. Keystone Custom Homes, Inc. is a design-build firm. Keystone Custom Homes, Inc. is not a general contractor and does not provide construction services. Keystone Custom Homes, Inc. is not a real estate agent and does not provide real estate services. Keystone Custom Homes, Inc. is not a lender and does not provide financial services. Keystone Custom Homes, Inc. is not a broker and does not provide brokerage services. Keystone Custom Homes, Inc. is not a title company and does not provide title insurance services. Keystone Custom Homes, Inc. is not a mortgage lender and does not provide mortgage services. Keystone Custom Homes, Inc. is not a home inspector and does not provide home inspection services. Keystone Custom Homes, Inc. is not a pest control company and does not provide pest control services. Keystone Custom Homes, Inc. is not a landscaping company and does not provide landscaping services. Keystone Custom Homes, Inc. is not a pool contractor and does not provide pool construction services. Keystone Custom Homes, Inc. is not a window contractor and does not provide window installation services. Keystone Custom Homes, Inc. is not a door contractor and does not provide door installation services. Keystone Custom Homes, Inc. is not a cabinet contractor and does not provide cabinet installation services. Keystone Custom Homes, Inc. is not a countertop contractor and does not provide countertop installation services. Keystone Custom Homes, Inc. is not a tile contractor and does not provide tile installation services. Keystone Custom Homes, Inc. is not a flooring contractor and does not provide flooring installation services. Keystone Custom Homes, Inc. is not a painting contractor and does not provide painting services. Keystone Custom Homes, Inc. is not a drywall contractor and does not provide drywall installation services. Keystone Custom Homes, Inc. is not a plaster contractor and does not provide plaster installation services. Keystone Custom Homes, Inc. is not a masonry contractor and does not provide masonry services. Keystone Custom Homes, Inc. is not a concrete contractor and does not provide concrete services. Keystone Custom Homes, Inc. is not a foundation contractor and does not provide foundation services. Keystone Custom Homes, Inc. is not a roof contractor and does not provide roof services. Keystone Custom Homes, Inc. is not a siding contractor and does not provide siding services. Keystone Custom Homes, Inc. is not a gutter contractor and does not provide gutter services. Keystone Custom Homes, Inc. is not a HVAC contractor and does not provide HVAC services. Keystone Custom Homes, Inc. is not a plumbing contractor and does not provide plumbing services. Keystone Custom Homes, Inc. is not an electrical contractor and does not provide electrical services. Keystone Custom Homes, Inc. is not a mechanical contractor and does not provide mechanical services. Keystone Custom Homes, Inc. is not a fire alarm contractor and does not provide fire alarm services. Keystone Custom Homes, Inc. is not a security contractor and does not provide security services. Keystone Custom Homes, Inc. is not a landscape contractor and does not provide landscape services. Keystone Custom Homes, Inc. is not a irrigation contractor and does not provide irrigation services. Keystone Custom Homes, Inc. is not a lighting contractor and does not provide lighting services. Keystone Custom Homes, Inc. is not a audio/visual contractor and does not provide audio/visual services. Keystone Custom Homes, Inc. is not a smart home contractor and does not provide smart home services. Keystone Custom Homes, Inc. is not a home automation contractor and does not provide home automation services. Keystone Custom Homes, Inc. is not a home theater contractor and does not provide home theater services. Keystone Custom Homes, Inc. is not a home office contractor and does not provide home office services. Keystone Custom Homes, Inc. is not a home gym contractor and does not provide home gym services. Keystone Custom Homes, Inc. is not a home theater contractor and does not provide home theater services. Keystone Custom Homes, Inc. is not a home office contractor and does not provide home office services. Keystone Custom Homes, Inc. is not a home gym contractor and does not provide home gym services.

227 GRANITE RUN DRIVE, SUITE 100
 LANCASTER, PENNSYLVANIA 17601
 TEL: (717) 464-9060 • FAX: (717) 464-9046
 www.keystonecustomhomes.com



KEYSTONE CUSTOM HOMES, INC.

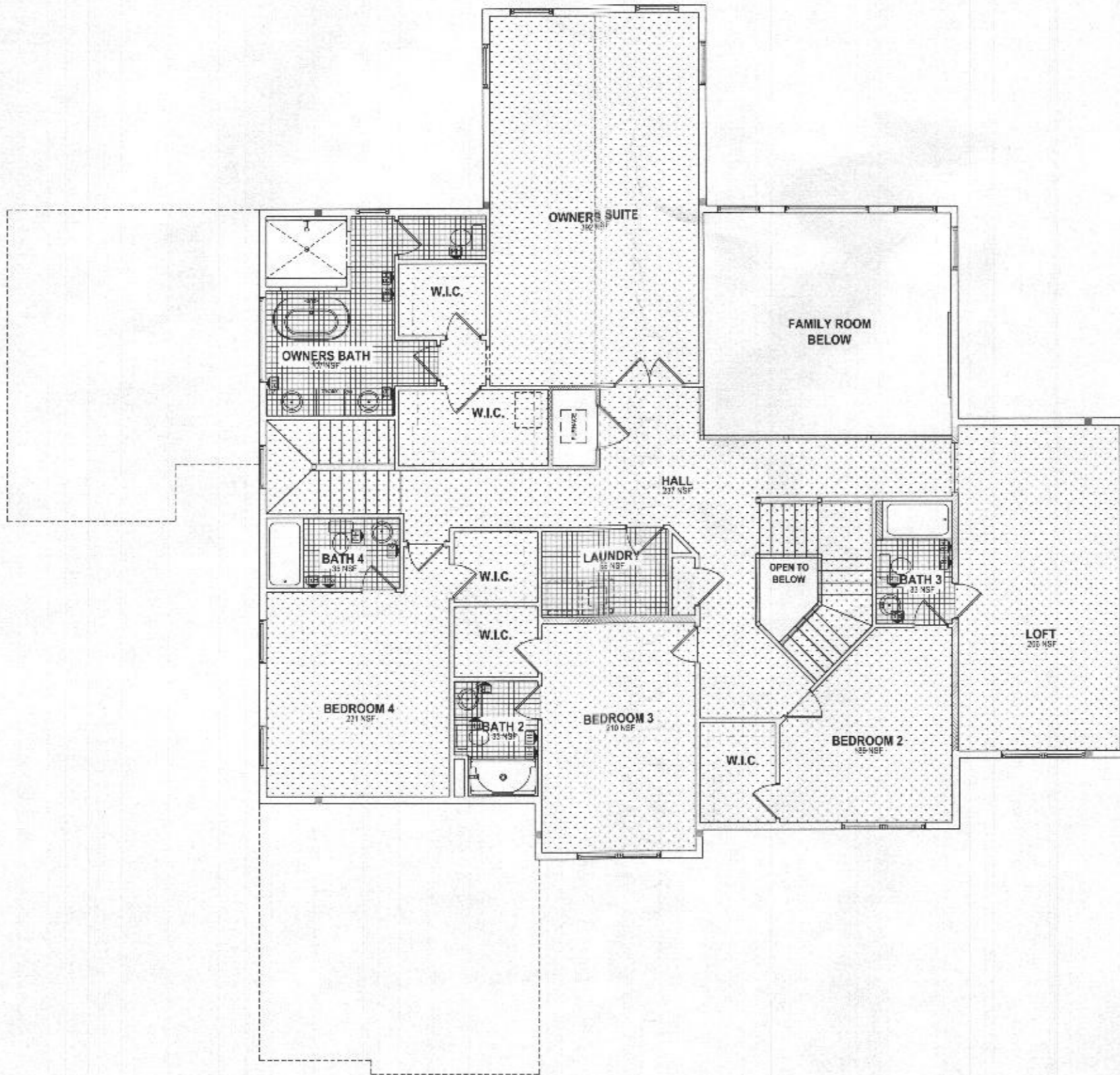
PROJECT DESCRIPTION: SECOND FLOOR FLOORING
 USER: EAS003 EDWARD

DATE: JULY 28 2021
 SCALE: AS NOTED
 DRAWN BY: T. HARRIS

SHEET NO. F1.1
 OF 10



Professional Certification: I hereby certify that these documents were prepared or approved by me, and that I am a duly licensed professional engineer under the laws of the State of Maryland, License No. 60358, Expiration Date: 12-12-2022



SECOND FLOOR - FLOORING
 SCALE: 1/4" = 1'-0"
 FLOORCOVERING AREA:
 (NSF = NET SQUARE FOOTAGE)



ALL BRACED WALLS CS-WSP UNLESS NOTED OTHERWISE

SIMPSON BRACKET LSTA36 AT CORNER FRAMING

Keystone Custom Homes		Braced Wall Line Requirement Calculations 2018 IRC Table R602.10.3(1) Footnotes												EA0003 Edward Harris March 29, 2021					
Adjustment Factors																			
Grided Wall Lines	2A	2B	2C	2D	2E	2F	2G	2H	2I	2J	2K	2L	2M	2N	2O	2P	2Q	2R	2S
1. Wind Speed (mph)	1.24	1.25	1.26	1.27	1.28	1.29	1.30	1.31	1.32	1.33	1.34	1.35	1.36	1.37	1.38	1.39	1.40	1.41	1.42
2. Exposure Category	1.00	1.00	1.00	1.00	1.00	1.00	1.00	1.00	1.00	1.00	1.00	1.00	1.00	1.00	1.00	1.00	1.00	1.00	1.00
3. Roof Height (ft)	1.00	1.00	1.00	1.00	1.00	1.00	1.00	1.00	1.00	1.00	1.00	1.00	1.00	1.00	1.00	1.00	1.00	1.00	1.00
4. Number of Braced Wall Lines	1.00	1.00	1.00	1.00	1.00	1.00	1.00	1.00	1.00	1.00	1.00	1.00	1.00	1.00	1.00	1.00	1.00	1.00	1.00
5. Seismic Risk Category	1.00	1.00	1.00	1.00	1.00	1.00	1.00	1.00	1.00	1.00	1.00	1.00	1.00	1.00	1.00	1.00	1.00	1.00	1.00

Grid	Braced Wall Line	Bracing Method	Height (ft)	Adjusted Height (ft)	Wind Factor	Total System Factor	Panel with Heat Covers	Total required bracing length (ft)	Bracing length provided (ft)	Status
2A	CS-WSP	42	5.3	7.61	1	N/A	N/A	10.11	10.5	
2B	CS-WSP	28	4.7	7.07	1	N/A	N/A	7.95	12.5	ENDS WITH THE 2 STORY PORTAL
2C	CS-WSP	74	5.2	7.56	1	N/A	N/A	6.32	10.5	
2D	CS-WSP	70	2.9	3.86	1	N/A	N/A	5.73	7	
2E	CS-WSP	12	2.5	3.29	1	N/A	N/A	2.93	7	
2F	CS-WSP	27	4.55	6.14	1	N/A	N/A	6.15	6	
2G	CS-WSP	18	2.6	3.37	1	N/A	N/A	2.77	6	
2H	CS-WSP	16	2.9	3.81	1	N/A	N/A	4.97	6.5	
2I	CS-WSP	17	2.9	3.81	1	N/A	N/A	4.97	6.5	

SECOND FLOOR PLAN
SCALE: 1/4" = 1'-0"



Professional Certification. I hereby certify that these documents were prepared or approved by me, and that I am a duly licensed professional engineer under the laws of the State of Maryland, License No. 13-03-0002, Expiration Date: 12-31-2022.

The architectural design, drawings, and/or specifications are the property of Keystone Custom Homes, Inc. and are to be used only for the project and site specifically identified. No reproduction or use of any part of these documents is permitted without the express written consent of Keystone Custom Homes, Inc. in writing. All copyright and other intellectual property rights are reserved by Keystone Custom Homes, Inc. in the United States and other countries. No part of these documents may be reproduced, stored in a retrieval system, or transmitted in any form or by any means, electronic, mechanical, photocopying, recording, or by any information storage and retrieval system, without the prior written permission of Keystone Custom Homes, Inc.

227 GRANITE RUN DRIVE, SUITE 100
LANCASTER, PENNSYLVANIA 17601
PH: (717) 464-9060 • FAX: (717) 464-9046
www.keystonecustomhomes.com



KEYSTONE CUSTOM HOMES, INC.

PROJECT: SECOND FLOOR PLAN
DATE: JULY 28, 2021
SCALE: AS NOTED
DRAWN BY: T. HARRIS
ELECTRICAL: B1.1
PLUMBING: ads10