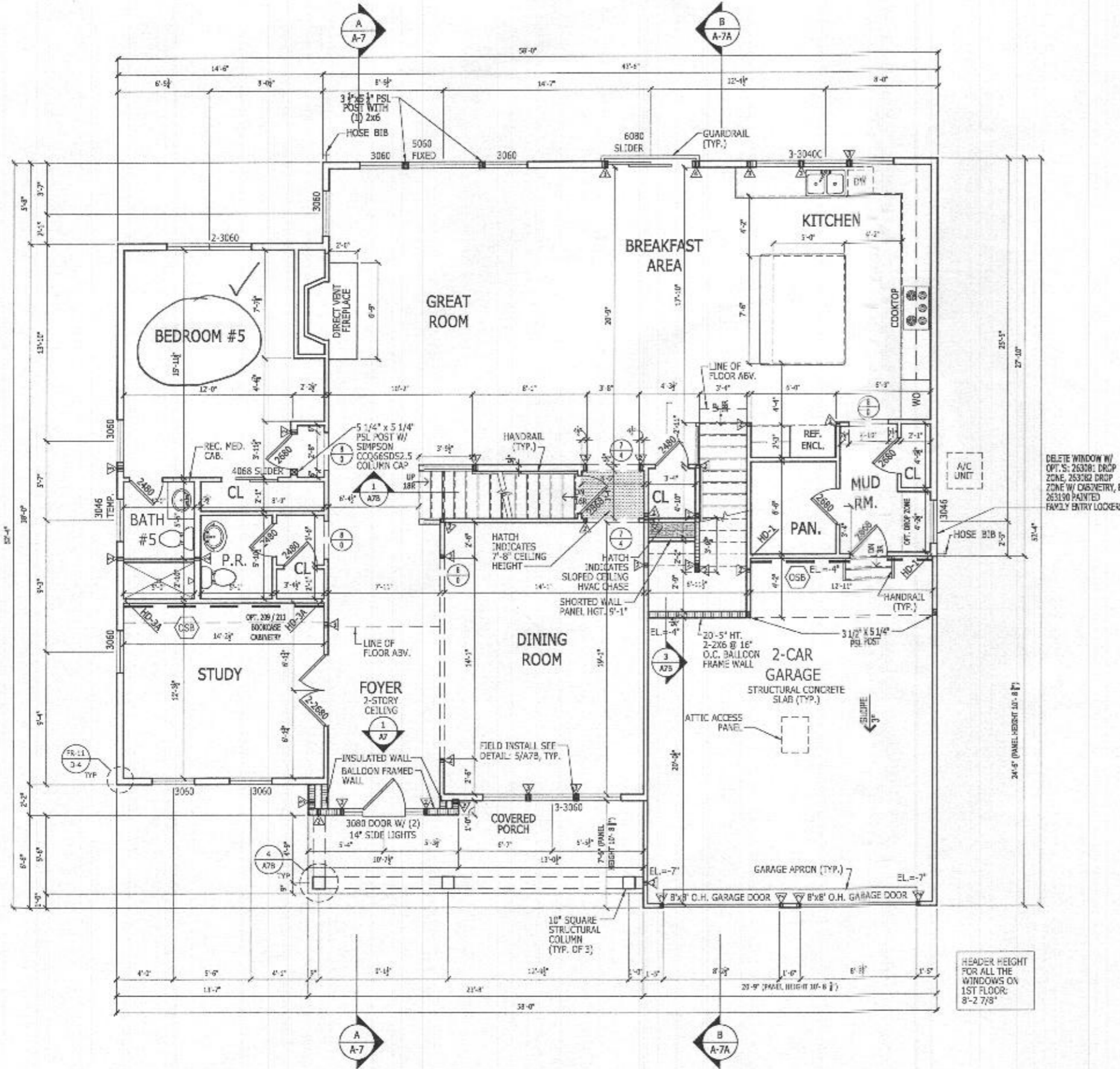




ALL IDEAS, DESIGNS, ARRANGEMENTS AND PLANS INDICATED OR REPRESENTED BY THIS DRAWING ARE OWNED BY AND THE PROPERTY OF TOLL BROTHERS, INC. AND ARE COPYRIGHTED. THEY WERE CREATED, EVOLVED AND DEVELOPED FOR USE ON, AND IN CONNECTION WITH THE SPECIFIED PROJECT. NONE OF SUCH IDEAS, DESIGNS, ARRANGEMENTS OR PLANS SHALL BE USED BY OR DISCLOSED TO ANY PERSON, FIRM OR CORPORATION FOR ANY PURPOSE WHATSOEVER WITHOUT THE WRITTEN PERMISSION OF TOLL BROTHERS, INC. WRITTEN DIMENSIONS OR THESE DRAWINGS SHALL HAVE PRECEDENCE OVER SCALED DIMENSIONS AND CONDITIONS SHOWN BY THESE DRAWINGS. TOLL BROTHERS OFFICE MUST BE NOTIFIED OF ANY VARIATIONS FROM THE DIMENSIONS AND CONDITIONS SHOWN BY THESE DRAWINGS.



**LATERAL BRACING**  
 THIS HOUSE HAS BEEN ENGINEERED TO RESIST ASCE 7-10 WIND LOAD USING AN ENGINEERED METHOD FOR 115 MPH BASIC WIND SPEED.  
 FOR OSB + DRYWALL ATTACHMENT SEE MLI DETAIL SHEET

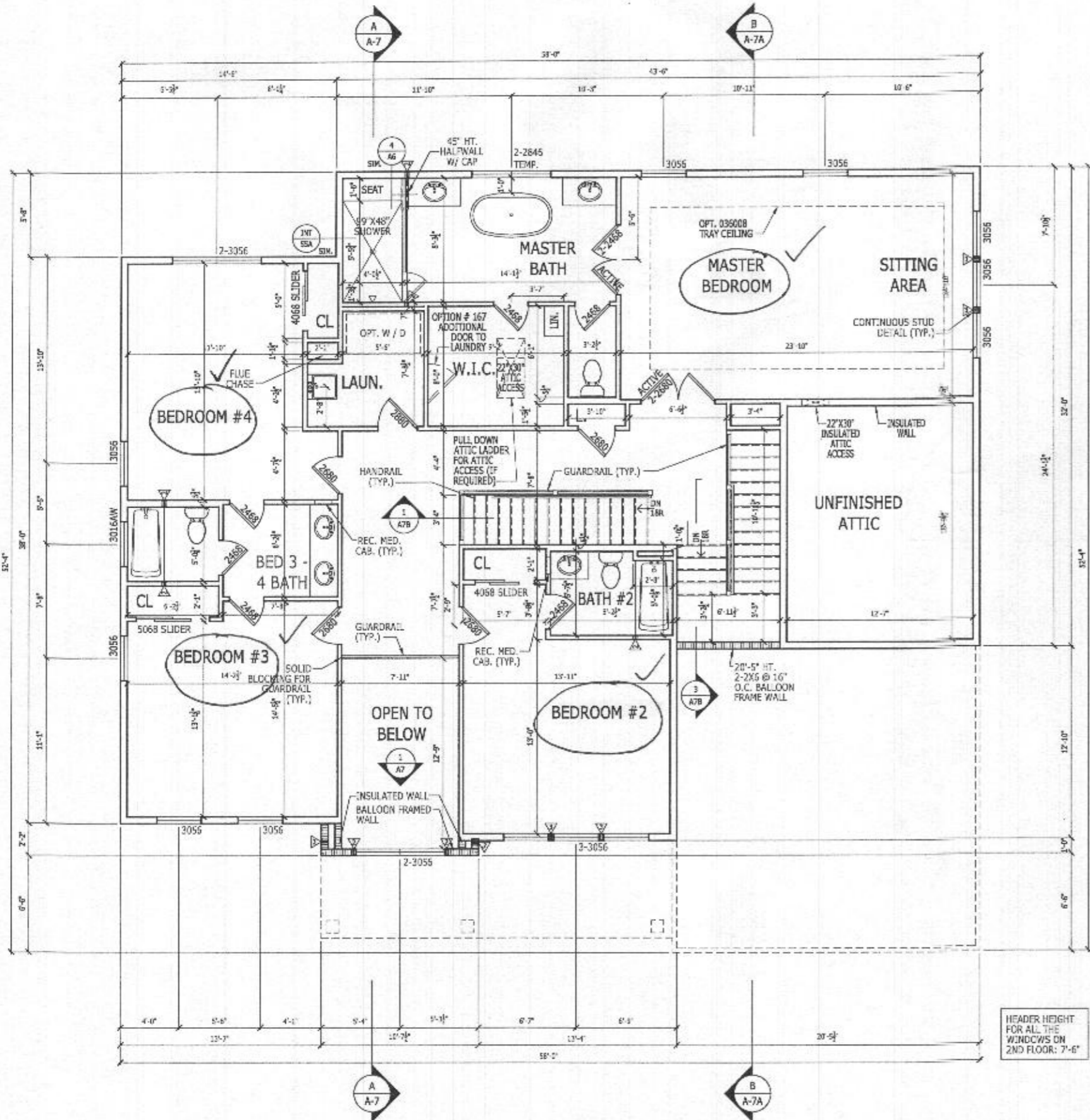
**FIRST FLOOR PLAN**  
 SCALE: 1/4" = 1'-0"

10' CEILING HEIGHT  
 CRAFTSMAN

RIGHT HAND SET

SHEET DESCRIPTION FIRST FLOOR PLAN		DRAWN BY - K.SIDHUPURA		SHEET REVISION INFO		TOLL ARCHITECTURE	
SERIAL NUMBER		CHECKED BY - TOLLARCH		SET REVISION INFO		PHILADELPHIA • ORLANDO DALLAS • LOS ANGELES • SEATTLE	
SHEET NUMBER		SHEET DATE - 03.13.2019		202347		250 Gibraltar Road, Horsham, PA 19044 P 215-293-5300   F 215-293-5314 A Division of Toll Brothers	
A2_31		DUMONT		CRAFTSMAN			
		ELEVATION NAME					
		MODEL/PROJECT NAME					
		PRODUCT LINE					

ALL IDEAS, DESIGNS, ARRANGEMENTS AND PLANS INDICATED OR REPRESENTED BY THIS DRAWING ARE OWNED BY AND THE PROPERTY OF TOLL BROTHERS, INC. AND ARE COPYRIGHTED. THEY WERE CREATED, EVOLVED AND DEVELOPED FOR USE ON, AND IN CONNECTION WITH THE SPECIFIED PROJECT. NONE OF SUCH IDEAS, DESIGNS, ARRANGEMENTS OR PLANS SHALL BE USED BY OR DISCLOSED TO ANY PERSON, FIRM OR CORPORATION FOR ANY PURPOSE WHATSOEVER WITHOUT THE WRITTEN PERMISSION OF TOLL BROTHERS, INC. WRITTEN DIMENSIONS ON THESE DRAWINGS SHALL HAVE PRECEDENCE OVER SCALED DIMENSIONS CONTRACTORS SHALL VERIFY, AND BE RESPONSIBLE FOR ALL DIMENSIONS AND CONDITIONS ON THE JOB AND TOLL BROTHERS OFFICE MUST BE NOTIFIED OF ANY VARIATIONS FROM THE DIMENSIONS AND CONDITIONS SHOWN BY THESE DRAWINGS.



**SECOND FLOOR PLAN**  
SCALE: 1/4" = 1'-0"

9' CEILING HEIGHT  
CRAFTSMAN

HEADER HEIGHT FOR ALL THE WINDOWS ON 2ND FLOOR: 7'-6"

**LATERAL BRACING**  
THIS HOUSE HAS BEEN ENGINEERED TO RESIST ASCE 7-10 WIND LOAD USING AN ENGINEERED METHOD FOR 115 MPH BASIC WIND SPEED.  
FOR OSB + DRYWALL ATTACHMENT SEE A4L1 DETAIL SHEET

RIGHT HAND SET

SHEET DESCRIPTION  
SECOND FLOOR PLAN

SHEET NUMBER  
1018.0

DRAWN BY - K. SIDHPUVA

CHECKED BY - TOLLARCH

SHEET DATE - 03.13.2019

PRODUCT LINE

MODEL/PROJECT NAME  
DUMONT

ELEVATION NAME  
CRAFTSMAN

SHEET REVISION INFO

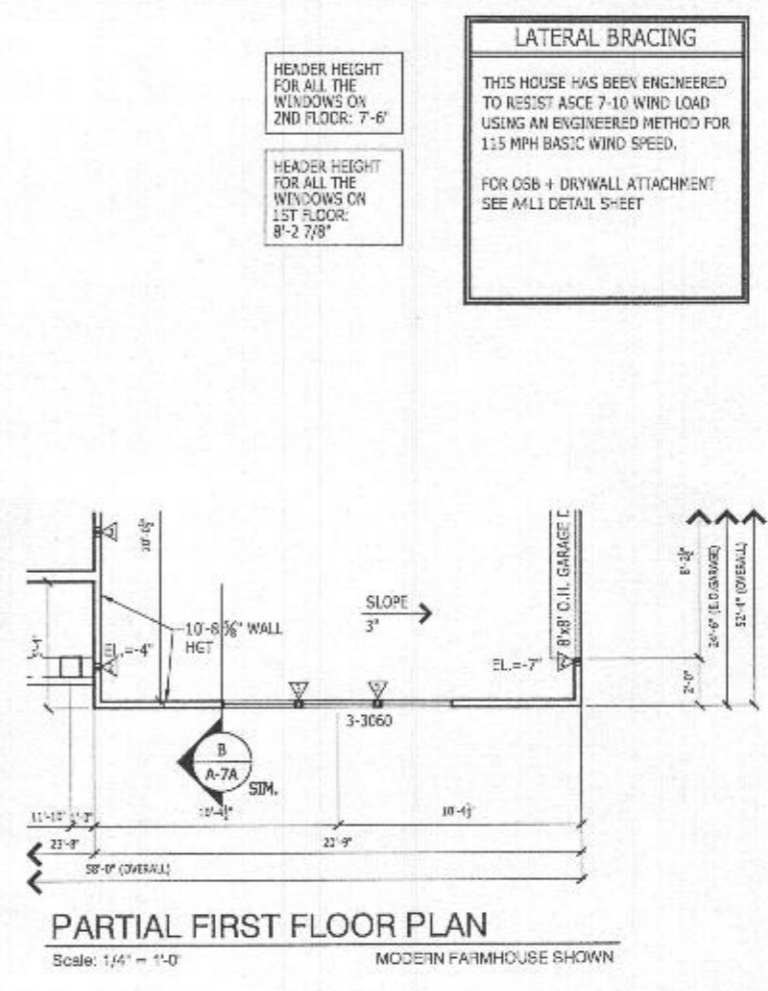
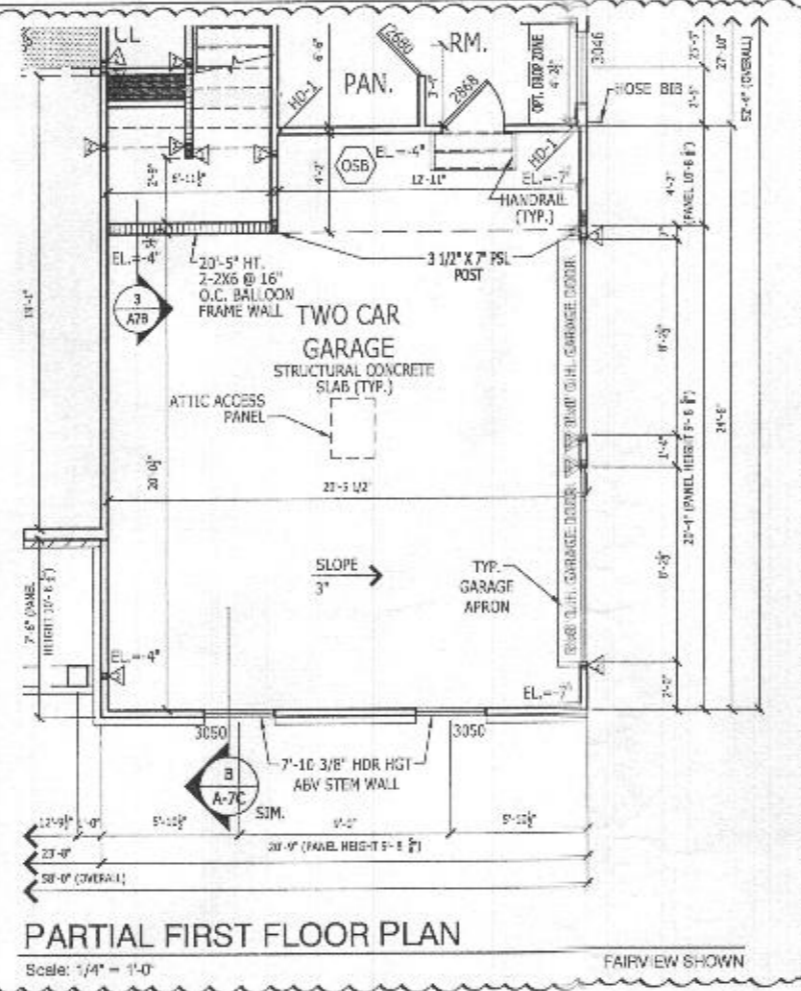
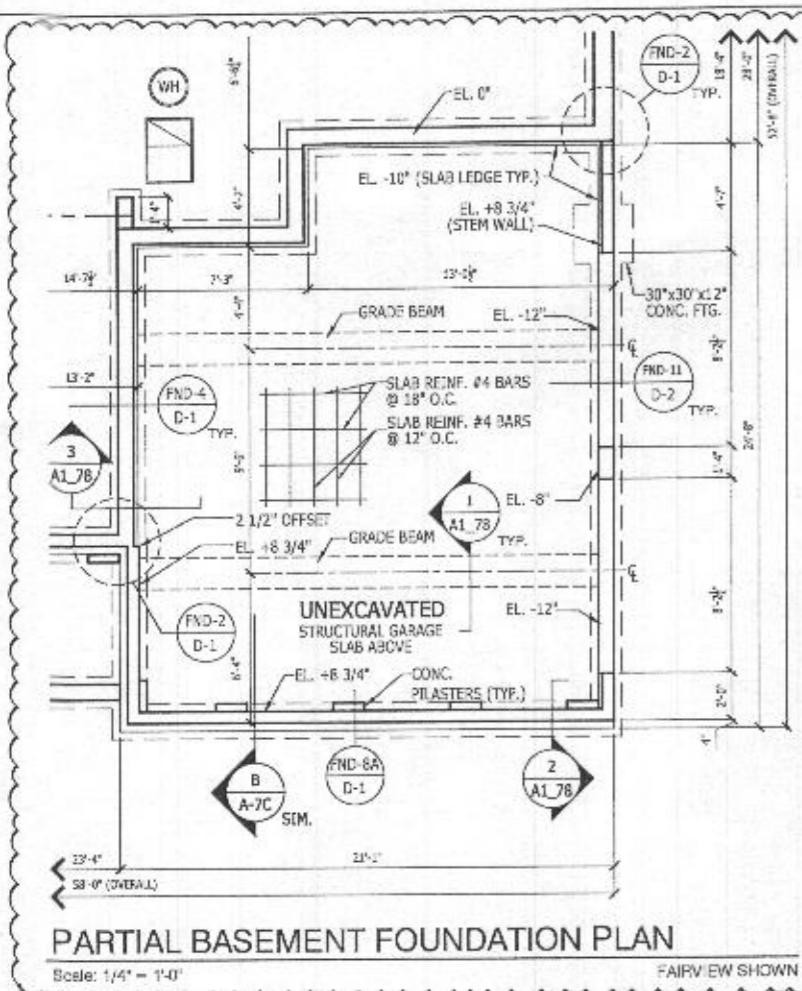
SET REVISION INFO  
202347

TOLLARCHITECTURE

PHILADELPHIA · ORLANDO  
DALLAS · LOS ANGELES · SEATTLE  
250 Gibraltar Road, Horsham, PA 19044  
P 215-293-5300 | F 215-293-5314  
A Division of TollBrothers

A3\_31

ALL IDEAS, DESIGNS, ARRANGEMENTS AND PLANS INDICATED OR REPRESENTED BY THIS DRAWING ARE OWNED BY AND THE PROPERTY OF TOLL BROTHERS, INC. AND ARE COPYRIGHTED. THEY WERE CREATED, EVOLVED AND DEVELOPED FOR USE ON, AND IN CONNECTION WITH THE SPECIFIED PROJECT. NONE OF SUCH IDEAS, DESIGNS, ARRANGEMENTS OR PLANS SHALL BE USED BY OR DISCLOSED TO ANY PERSON, FIRM OR CORPORATION FOR ANY PURPOSE WHATSOEVER WITHOUT THE WRITTEN PERMISSION OF TOLL BROTHERS, INC. WRITTEN DIMENSIONS ON THESE DRAWINGS SHALL HAVE PRECEDENCE OVER SCALED DIMENSIONS CONTRACTORS SHALL VERIFY, AND BE RESPONSIBLE FOR ALL DIMENSIONS AND CONDITIONS ON THE JOB AND TOLL BROTHERS OFFICE MUST BE NOTIFIED OF ANY VARIATIONS FROM THE DIMENSIONS AND CONDITIONS SHOWN BY THESE DRAWINGS.



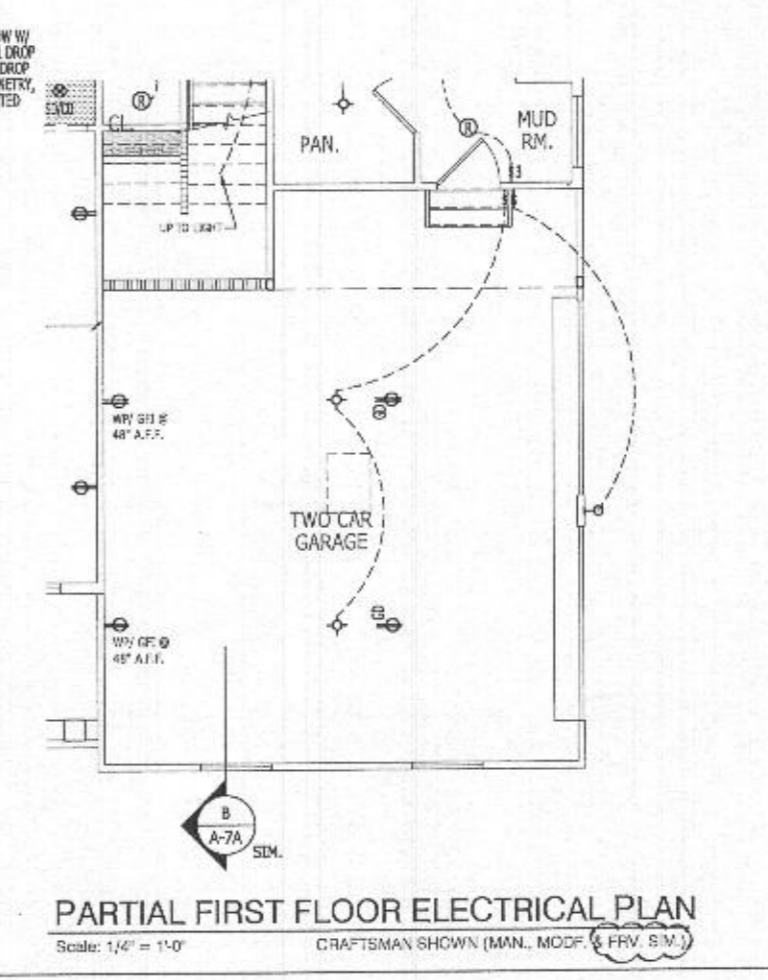
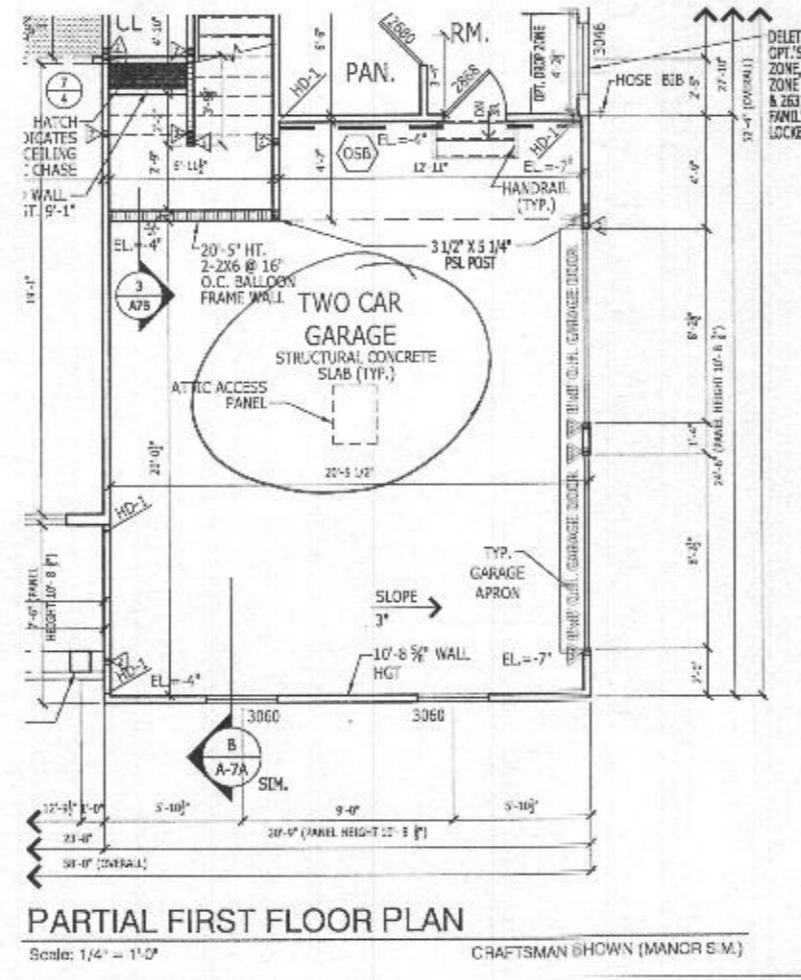
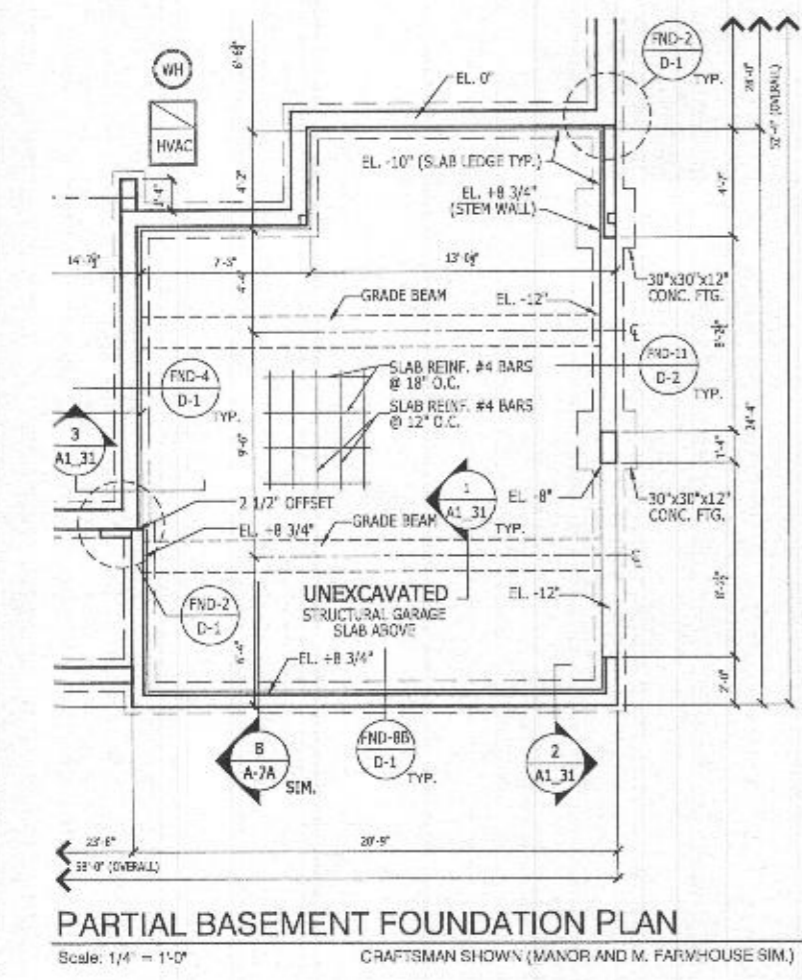
**LATERAL BRACING**

THIS HOUSE HAS BEEN ENGINEERED TO RESIST ASCE 7-10 WIND LOAD USING AN ENGINEERED METHOD FOR 115 MPH BASIC WIND SPEED.

FOR OSB + DRYWALL ATTACHMENT SEE ALL DETAIL SHEET

HEADER HEIGHT FOR ALL THE WINDOWS ON 2ND FLOOR: 7'-6"

HEADER HEIGHT FOR ALL THE WINDOWS ON 1ST FLOOR: 8'-2 7/8"

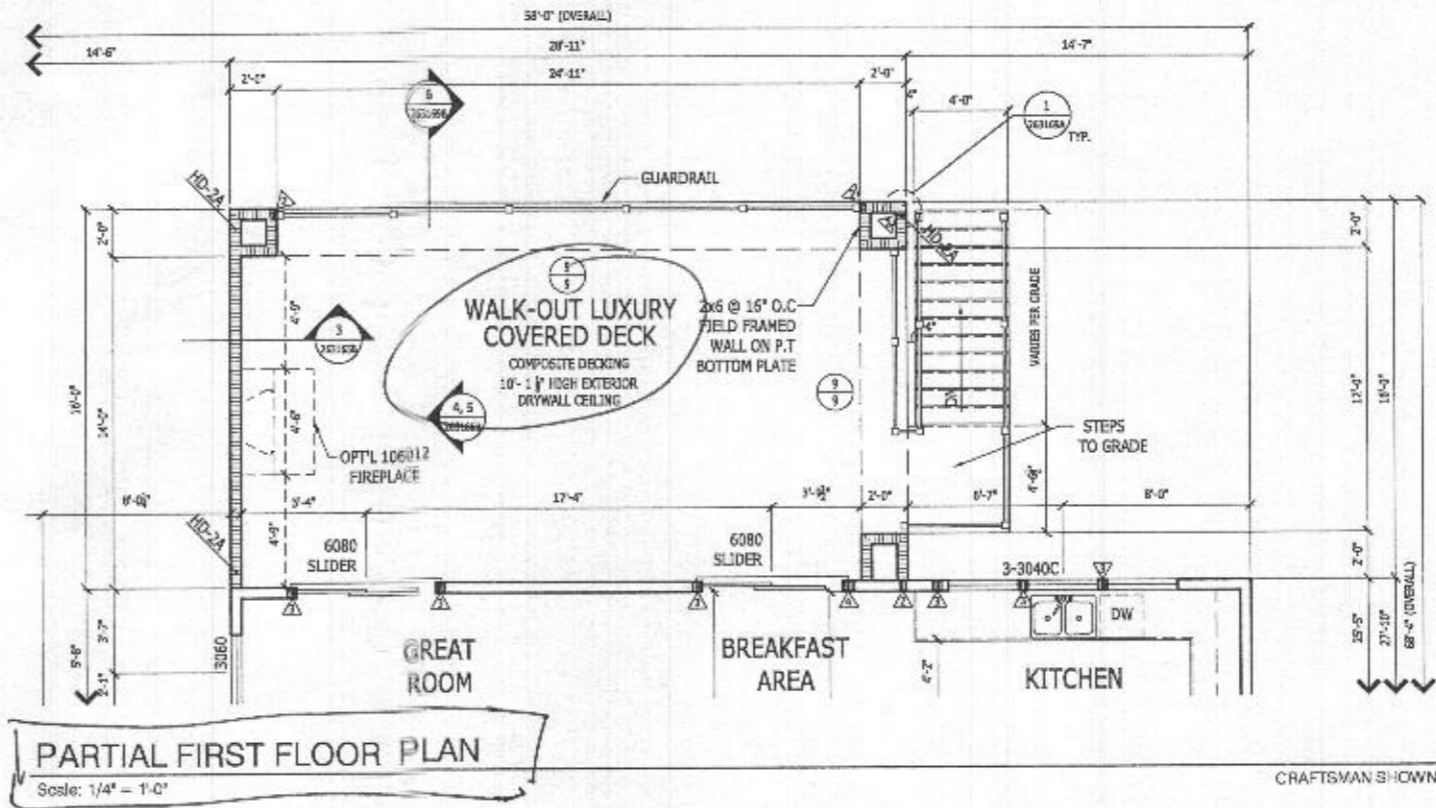


**RIGHT HAND SET**

<b>TOLLARCHITECTURE</b>	
PHILADELPHIA · ORLANDO DALLAS · LOS ANGELES · SEATTLE 1140 Virginia Drive · Fort Washington, PA 19004 P 215-293-5300   F 215-293-5314 A Division of Toll Brothers	
SHEET REVISION INFO 230525	SET REVISION INFO 202347
PRODUCT LINE	MODEL/PROJECT NAME <b>DUMONT</b>
	ELEVATION NAME
DRAWN BY - K.SIDHUPURA	CHECKED BY - TOLLARCH
SHEET DATE - 03.13.2019	
SHEET DESCRIPTION <b>OPT # 012- TWO CAR SIDE ENTRY GARAGE ILO STANDARD GARAGE CONFIGURATION</b>	
SHEET NUMBER	<b>012</b>
SERIAL NUMBER	1018.0

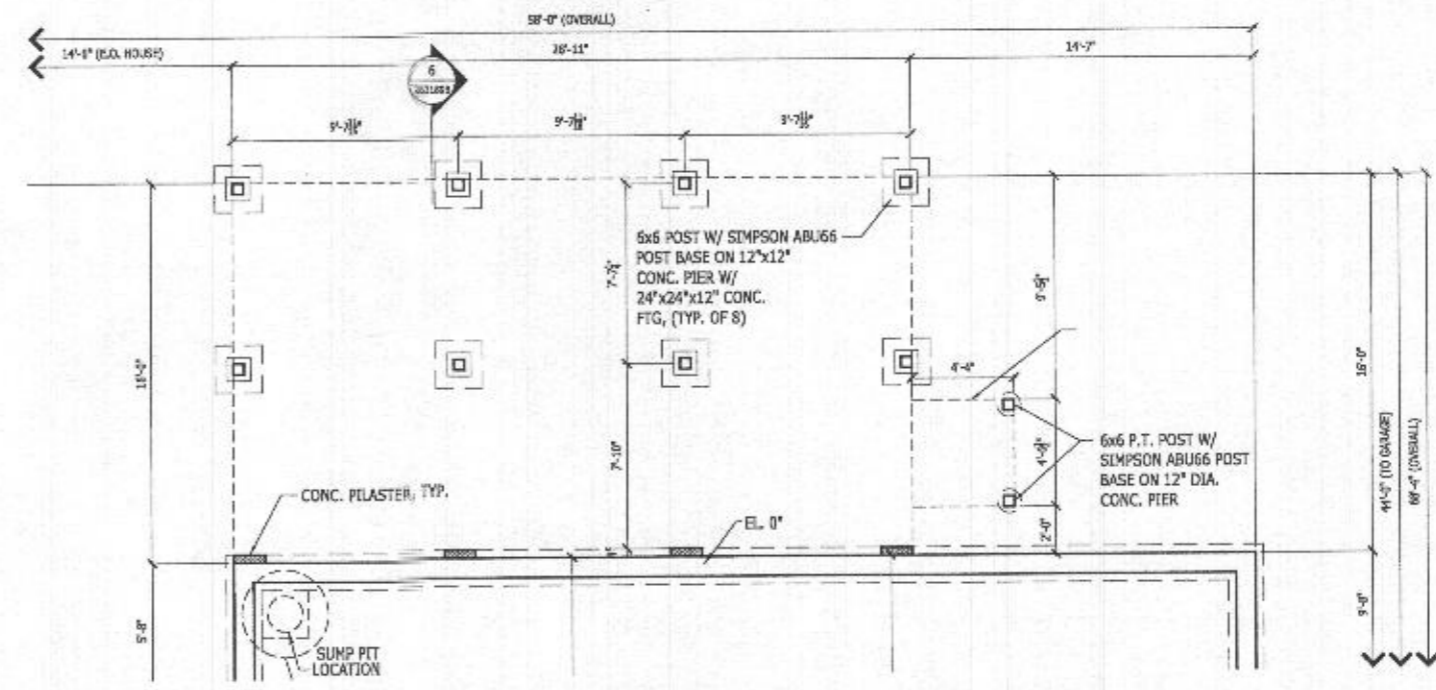
ALL IDEAS, DESIGNS, ARRANGEMENTS AND PLANS INDICATED OR REPRESENTED BY THIS DRAWING ARE OWNED BY AND THE PROPERTY OF TOLL BROTHERS, INC. AND ARE COPYRIGHTED. THEY WERE CREATED, EVOLVED AND DEVELOPED FOR USE ON, AND IN CONNECTION WITH THE SPECIFIED PROJECT. NONE OF SUCH IDEAS, DESIGNS, ARRANGEMENTS OR PLANS SHALL BE USED BY OR DISCLOSED TO ANY PERSON, FIRM OR CORPORATION FOR ANY PURPOSE WHATSOEVER WITHOUT THE WRITTEN PERMISSION OF TOLL BROTHERS, INC. WRITTEN DIMENSIONS ON THESE DRAWINGS SHALL HAVE PRECEDENCE OVER SCALED DIMENSIONS CONTRACTORS SHALL VERIFY, AND BE RESPONSIBLE FOR ALL DIMENSIONS AND CONDITIONS ON THE JOB AND TOLL BROTHERS OFFICE MUST BE NOTIFIED OF ANY VARIATIONS FROM THE DIMENSIONS AND CONDITIONS SHOWN BY THESE DRAWINGS.

© TB Proprietary Corp.



**PARTIAL FIRST FLOOR PLAN**  
Scale: 1/4" = 1'-0"

CRAFTSMAN SHOWN



**PARTIAL BASEMENT FOUNDATION PLAN**  
Scale: 1/4" = 1'-0"

CRAFTSMAN SHOWN

**RIGHT HAND SET**

<b>TOLLARCHITECTURE</b>	
PHILADELPHIA - ORLANDO DALLAS - LOS ANGELES - SEATTLE	
250 Gibraltar Road, Horsham, PA 19044 P 215-293-5300   F 215-293-5314 A Division of Toll Brothers	
SHEET REVISION INFO	SET REVISION INFO
	202347
PRODUCT LINE	MODEL/PROJECT NAME
	<b>DUMONT</b>
	ELEVATION NAME
DRAWN BY - A. BIERSTEIN	CHECKED BY - TOLL ARCH.
	SHEET DATE - 08/26/19
SHEET DESCRIPTION	
OPT # 263169- WALK-OUT LUXURY COVERED DECK	
SHEET NUMBER	1016.0
<b>263169</b>	