

A/P

58

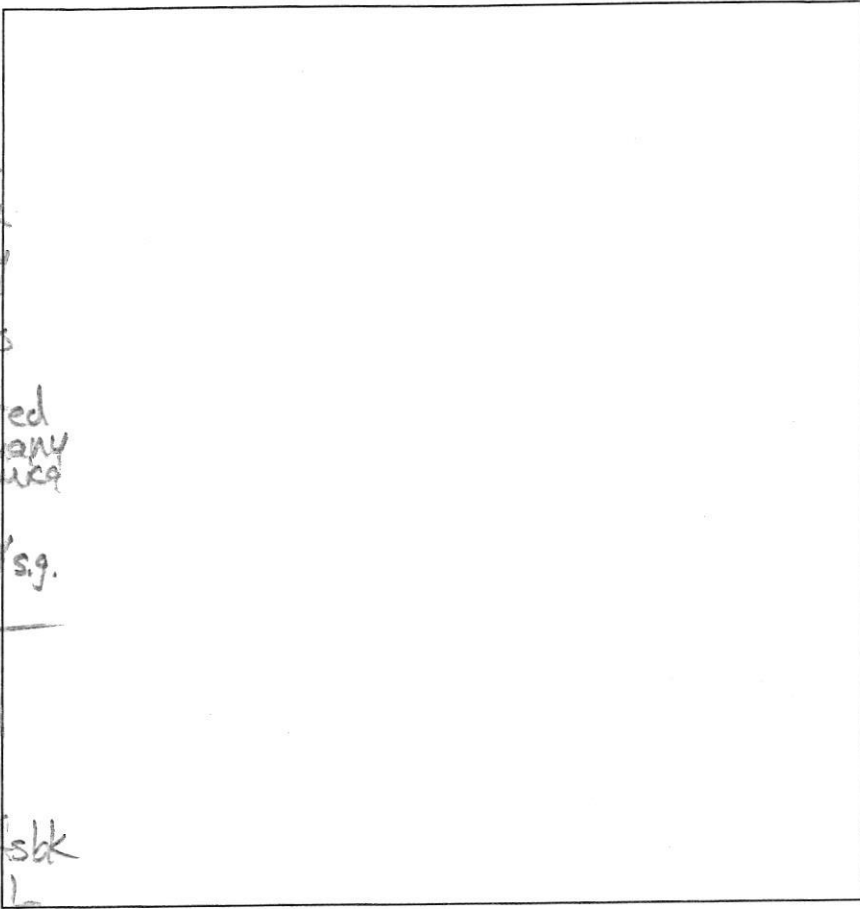
to
0.8' dk brn L, 2 fsbk
red L, 2msbk
Slightly sticky
2' red sl, thin
3' many mica plates
H. brn & vel-red
ls, 1msbk, many mica
4' few clauvers
H. brn ls, 0'sg.
many mica
15.3

57

Fill
1.2' grey-brn sl
many mica
1.5' dk. brn L, 2v fsbk
1.5' vel-red chl
2msbk connum mica
2.2' vel-red chsl
remnant platy
many mica
4' alternating
layers
grey brn chls, micaceous
2' vel-red ls, 0'sg.
brn ls, many mica
14' 0'sg.

59

0.7' dk brn L, 2fsbk
vel-red chl, 2msbk
SS, few mica
2.2' vel-red sl (heavy)
0m, many mica
3.5' vel-red ls
many mica
4.5' grey-brn ls
thin platy
many mica
14.5'



DATE	TEST #	DEPTH	START	BREAK 1" DROP	STOP 2" DROP	TIME OF 2ND INCH	P/F/H
10/23/14	58	4.5' / 15.3'	10:44	10:47	10:58	11	P
10/23/14	57	5.5' / 14'	11:00	11:07	11:18	11	P
	59	5' / 14.5'	11:23	11:24	11:29	5	P
	61	3.5' / 13'	1:32	1:39	1:52	13	P
10/23/14	60	3.5' / 12'	1:54	1:57	2:07	10	P

61

0.6' dk brn L
2'sg
14' brn sl (heavy)
2msbk
many mica
H. brn sl
2msbk, many mica
3' vel-red &
pale brn ls
0m
10.5' brn & pale brn
ls, many mica
10% stones
13'

60

0.8' dk brn L
2v fsbk
1.5' brn sl
3msbk few mica
2.7' vel-red sl
2msbk
H. brn & pale
yellow mica
8.5' 0m
12' brn chls
0'sg.

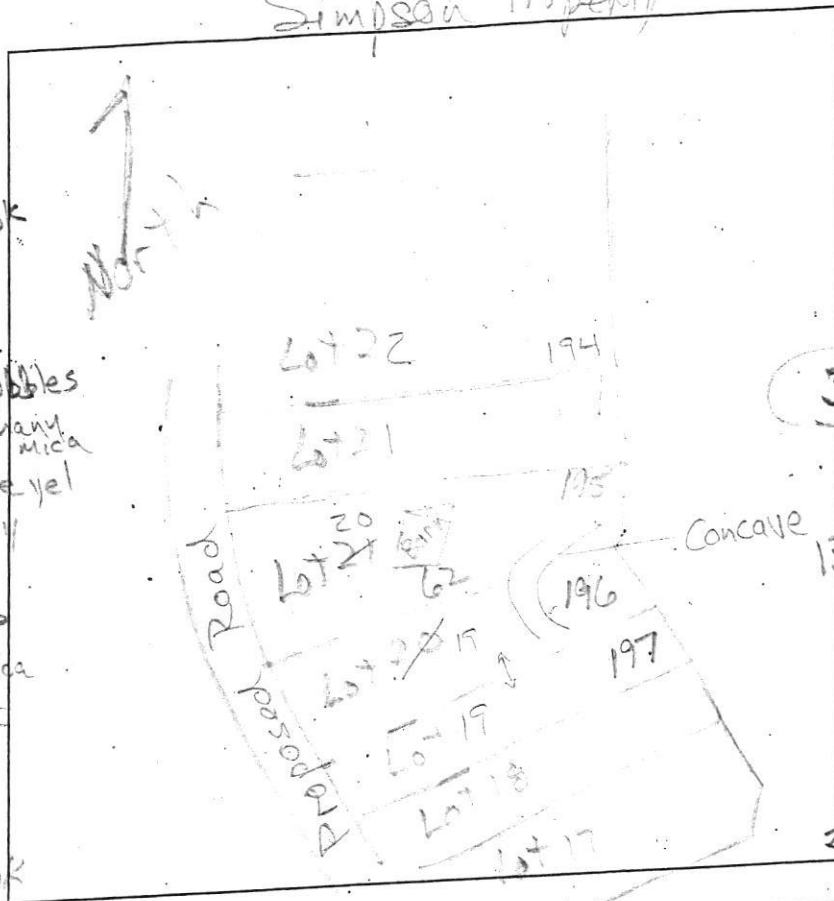
REMARKS
SANITARIAN Rbricker BACKHOE Hottfield's (Connie) B. Rowe OTHERS _____

TEST HOLES USED IN SDA _____ AVG. PERC TIME _____ SQ. FT/BR _____

TRENCH WIDTH _____ INLET DEPTH _____ MAX. BOT DEPTH _____ EFFECTIVE SW _____

Lots 15 & 16

Simpson Property



AP
 185
 dk brn sl
 2 f sbk
 1' brn sl f sbk
 0.7' red-brn L
 2 f sbk
 15' red-yel sl
 few angular cobbles
 thick platy many mica
 5' yel-red & pale yel
 ls, thick platy
 many mica
 8' pale brn chls
 thick platy
 many mica
 13.7'

194
 dk brn L 2 f sbk
 0.7' brn L, 2 f sbk
 red-brn L
 2 f sbk
 1.8' yel-red
 & lt. brn sl
 thick platy
 many mica
 3.3' yel-red
 & pale brn ls
 thick platy
 many mica

196
 dk brn sl
 2 f sbk
 1' brn sl 7 f sbk
 1' brn L
 2 f sbk
 2.3' yel-red & brn
 L thick
 sls platy
 3.3' yel-red &
 brn chsl
 thick platy
 4' yel-red & brn
 sl, thick platy
 common fine mica
 6' yel-red stsl
 7.9' yel-red ls
 thick platy
 many mica
 9' yel-red & pale yellow
 chls, platy
 10.3' grey ls
 thick platy
 many mica
 11.5'

197
 dk brn sl 2 f sbk
 1' brn chsl 2 f sbk
 1' yel-red & brn L
 2 f sbk
 2.5' red-yel & yel-red
 sl, thick platy
 many fine mica
 4.5' red-yel & pale brn
 ls, thick platy
 many mica
 11.5' red-yel & grey
 ls, saturated
 thick platy
 many mica
 12' - cave-in
 14' - water level

DATE	TEST #	DEPTH	START	BREAK 1" DROP	STOP 2" DROP	TIME OF 2ND INCH	P/F/H
7/8/15	195	5.3' 13.7'	2:22	2:26	2:33	7	P
7/8/15	196	6' 10.3'	2:40	3:10 ⁺			F
7/8/15	194	4.7' 13'	3:17	3:19	3:22	3	P
7/8/15	197	7' 11.5'	3:35	3:37	3:42	5	P

REMARKS #196 in concave and form

SANITARIAN R. Bricker BACKHOE Hatfield's OTHERS Art Leonard

TEST HOLES USED IN SDA _____ AVG. PERC TIME _____ SQ. FT/BR _____

TRENCH WIDTH _____ INLET DEPTH _____ MAX. BOT DEPTH _____ EFFECTIVE SW _____