

1/7/93
1/14/93
ASAP #LX76

PERMIT 04-353684

P 48670
A 43376

SEWAGE DISPOSAL SYSTEM

DEPARTMENT OF HEALTH AND MENTAL HYGIENE

DISTRICT 4th

INDEXED

DATE 11/06/92

HOWARD COUNTY HEALTH DEPARTMENT

BUREAU OF ENVIRONMENTAL HEALTH

~~ADDRESS~~ 313-2640

DATE SYSTEM APPROVED 1-14-93

INSPECTOR R. Bell

Masonry Contractors, Inc. (FULL) IS PERMITTED TO INSTALL X ALTER

ADDRESS 4219 Hanover Pike, Manchester, Maryland 21102 PHONE 410-239-8330

SUBDIVISION Cabin Branch Farms LOT 1 ROAD 3200 Starting Gate Court

PROPERTY OWNER Cabin Branch Ltd Partnership

ADDRESS _____

SEPTIC TANK CAPACITY 1250 GALLONS

NUMBER OF BEDROOMS 4

180 SQUARE FEET PER BEDROOM

LINEAR FEET OF TRENCH REQUIRED 180

TRENCHES - Trench to be 2 feet wide. Inlet 3½ feet below original grade. Bottom maximum depth 7½ feet below original grade. Effective area begins at 3½ feet below original grade. 4 feet of stone below distribution pipe.

LOCATION - Place distribution box 160 feet from the rear lot line and 210 feet from the right lot line as seen when facing the property from Starting Gate Court. Run trenches along contour toward right side of property.

NOTES - No trench to exceed 100 feet in length. Provide 6" - 8" diameter cleanout and cap to grade or above on septic tank. OK 11/10/92 RH

PLANS APPROVED BY C. Williams DATE 11/05/92

COVER NO WORK UNTIL INSPECTED AND APPROVED

NEITHER THE HOWARD COUNTY COUNCIL NOR THE HEALTH DEPARTMENT IS RESPONSIBLE FOR THE SUCCESSFUL OPERATION OF ANY SYSTEM

NOTE: CLEANOUT REQUIRED EVERY 70 FEET OF SEWER LINE AND/OR AT 90° SWEEPS IN LINES FROM HOUSE TO DRAIN FIELDS, 90° ELBOWS NOT ACCEPTABLE.

NOTE: ALL PARTS OF SEPTIC SYSTEMS (I.E. TANK, DISTRIBUTION BOX TRENCHES) TO BE 100 FEET FROM WELL (UNLESS OTHERWISE SPECIFICALLY AUTHORIZED)

NOTE: IF DEEP TRENCH(ES) ARE USED CALL FOR INSPECTION BEFORE AND AFTER PLACING GRAVEL IN TRENCH(ES)

NOTE: NO DRY WELL SHALL EXCEED 15 FOOT IN DIAMETER NO ABSORPTION TRENCH TO EXCEED 100 FEET IN LENGTH

NOTE: ALL PIPE FROM HOUSE TO SEPTIC TANK MUST BE CAST IRON OR SCHEDULE 35/40 PVC OR ABS

PERMIT VOID AFTER TWO YEARS

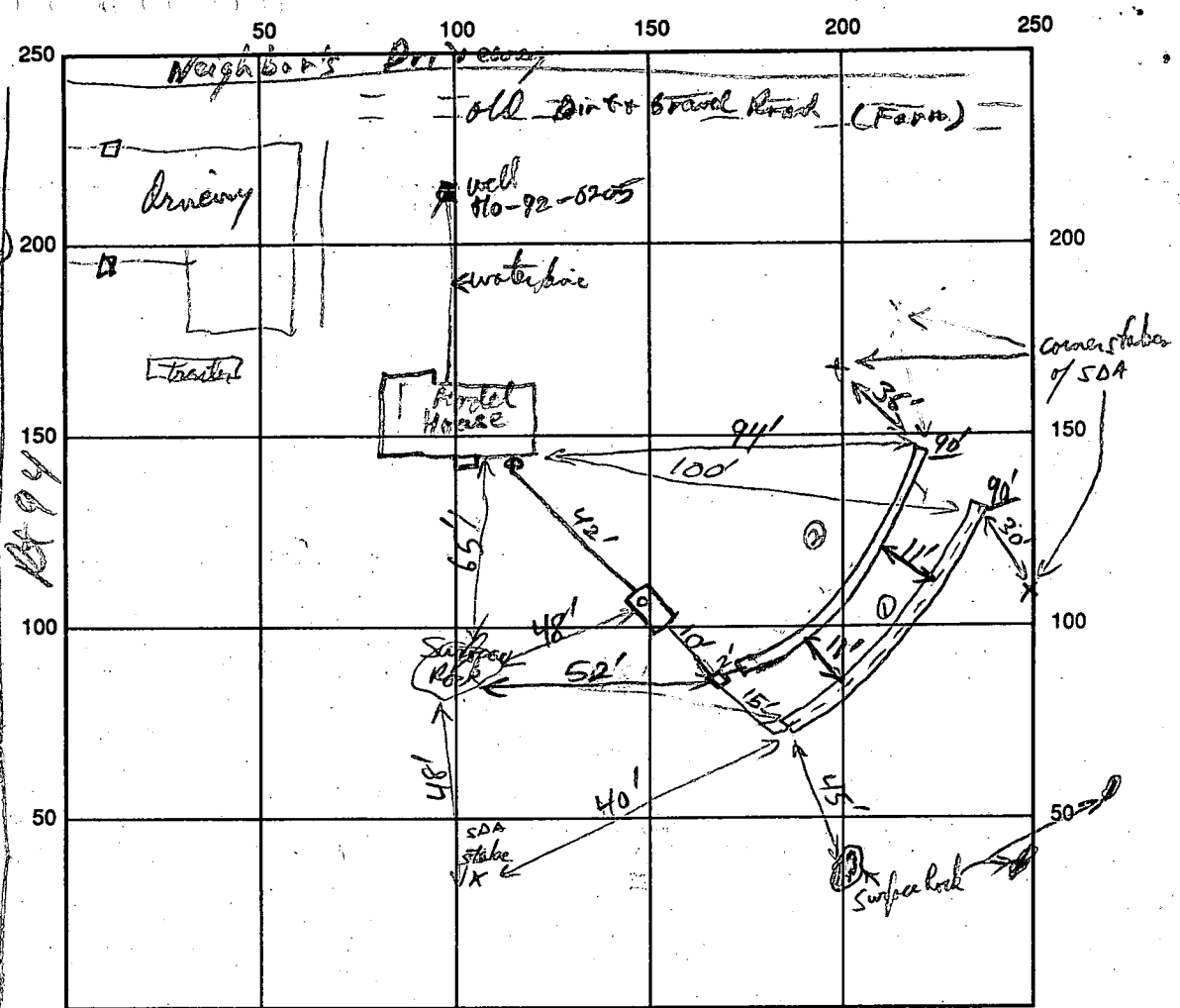
NOTE: INSTALL STAND PIPE ON SEPTIC TANK AND DRY WELL STAND PIPES MUST BE 6 INCHES IN DIAMETER CAST IRON. CONCRETE OR TERRA COTTA OR PVA OR ABS ACCEPTED. IF TOP OF SEPTIC TANK IS DEEPER THAN 3 FEET. MANHOLE TO GRADE REQUIRED.

NOTE: DISTRIBUTION BOXES MUST HAVE BAFFLES

***INSTALLER IS RESPONSIBLE FOR OBTAINING FINAL APPROVAL ON THIS PERMIT**

A
43376

Tranch 1
 3' 1/2 gal Bra Si CL
 2 fms sk
 Red h CL
 6' 1/2 fms
 1 m - CS 6k
 Reddish orange
 gr. CL
 mfr 30% gravel
 1/2 2 ft. stone on
 bottom



INDICATE NORTH - NAME ADJOINING ROADWAY AS BASE LINE

SEPTIC TANK LEVEL 1250 gal CLEANOUTS HSE & CT
 DISTRIBUTION BOX LEVEL OK
 DRAIN FIELD/TITLE DEPTH 7 1/2 FT. TRENCH WIDTH 2 FT. INLET DEPTH 3.5/3 FT.
 EFFECTIVE GRAVEL DEPTH 4 FT. TOTAL LENGTH 90'/90 FT.
 NUMBER OF TRENCHES 2 ONE SIDEWALL/AREA 720 SQ. FT.
 DRYWALL INSIDE DIAMETER — FT. EFFECTIVE DEPTH BELOW INLET — FT.
 ABSORBENT AREA — SQ. FT.

REMARKS: ST Hole dug North of house to care RIP 1/7/92 Septic Tank Set OK to to care. Home connect 1/7/93 + S.T.
 Home Thread dug - Red Clay to 6' below grade (see Tranch Soil Description) RIP 1/11/92 This system will probably work on Bottom
 Area Only - Future Repairs should design on 5-6' clay to surface - only 1 1/2 ft of sidewall / L.O.F. of Tranch
 2nd Tranch OK to gravel fill, 1/14/93 RIP OK to care 1/14/93 RIP

Note - Limited Repair Area between house Tranch & Surface Rock - 1/2 SDA remains as part of initial system for future repair

DATE SYSTEM APPROVED 1-14-93 INSPECTOR RJ Pralle

S

THIS PROJECT IS BASED ON
PLANS NO. 3428001 AND
COMPREHENSIVE ZONING PLAN

2/16/89 AND P-90-03

SECTION 16-113-C-10, TO
THE MINIMUM LENGTH
SECTION, SNOW REMOVAL
AT THE JUNCTION OF THE
SIDEWALK AND NOT ON
THE SIDEWALK.
EASEMENT OF
MARYLAND

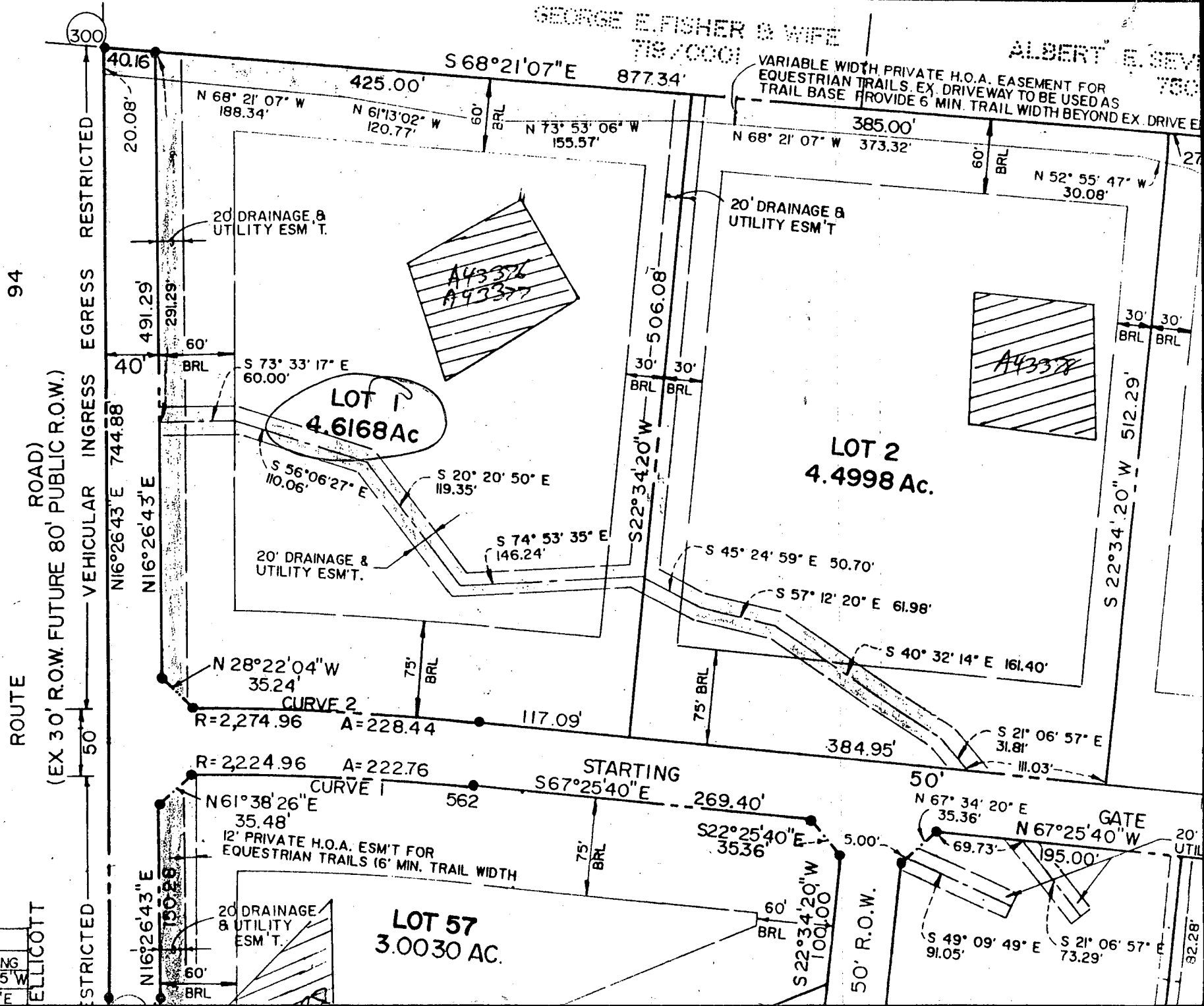
MOVEMENTS OF ANY
UNTIL PUBLIC SEWAGE
IS NULL AND
EASEMENT SYSTEM. THE
THE AUTHORITY TO
BE INTO THE PRIVATE
MODIFIED SEWAGE
PERMITTED WITHIN WET-

ROUTE 94, AS
THE GENERAL
ED 1982.
LOCATION CHART.
ALL NOT BE DISTURBED
AND IS OPEN TO THE

NO. 90-0229-5.
ON 16.116 (C)(6) TO PERMIT
LANDS FOR CONSTRUCTION

500

SEGMENT	CHORD	CH. BEARING
147'	222.66	N70°17'45"W
228.34'		S70°18'16"E



GEORGE E. FISHER & WIFE
7/9/0001

ALBERT E. SEV...
7/9/0001

VARIABLE WIDTH PRIVATE H.O.A. EASEMENT FOR
EQUESTRIAN TRAILS. EX. DRIVEWAY TO BE USED AS
TRAIL BASE PROVIDE 6 MIN. TRAIL WIDTH BEYOND EX. DRIVE EX.

94

ROUTE 94
(EX 30' R.O.W. FUTURE 80' PUBLIC R.O.W.)

RESTRICTED
VEHICULAR INGRESS

50

ELLICOTT

300

40.16

20.08'

491.29'

291.29'

40'

744.88'

N16°26'43"E

N16°26'43"E

N16°26'43"E

N16°26'43"E

N16°26'43"E

N16°26'43"E

60'

60'

60'

60'

60'

60'

60'

60'

60'

60'

60'

60'

60'

60'

60'

60'

60'

60'

60'

60'

60'

60'

60'

60'

60'

60'

60'

60'

60'

425.00'

188.34'

120.77'

188.34'

120.77'

188.34'

120.77'

188.34'

120.77'

188.34'

120.77'

188.34'

120.77'

188.34'

120.77'

188.34'

120.77'

188.34'

120.77'

188.34'

120.77'

188.34'

120.77'

188.34'

120.77'

188.34'

120.77'

188.34'

120.77'

877.34'

155.57'

155.57'

155.57'

155.57'

155.57'

155.57'

155.57'

155.57'

155.57'

155.57'

155.57'

155.57'

155.57'

155.57'

155.57'

155.57'

155.57'

155.57'

155.57'

155.57'

155.57'

155.57'

155.57'

155.57'

155.57'

155.57'

155.57'

155.57'

60'

60'

60'

60'

60'

60'

60'

60'

60'

60'

60'

60'

60'

60'

60'

60'

60'

60'

60'

60'

60'

60'

60'

60'

60'

60'

60'

60'

60'

60'

60'

60'

60'

60'

60'

60'

60'

60'

60'

60'

60'

60'

60'

60'

60'

60'

60'

60'

60'

60'

60'

60'

60'

60'

60'

60'

60'

60'

60'

60'

60'

60'

60'

60'

60'

60'

60'

60'

60'

60'

60'

60'

60'

60'

60'

60'

60'

60'

60'

60'

60'

60'

60'

60'

60'

60'

60'

60'

60'

60'

60'

60'

60'

60'

60'

60'

60'

60'

60'

60'

60'

60'

60'

60'

60'

60'

60'

60'

60'

60'

60'

60'

60'

60'

60'

60'

60'

60'

60'

60'

60'

60'

60'

60'

60'

60'

60'

60'

60'

60'

60'

60'

60'

60'

60'

60'

60'

60'

60'

60'

60'

60'

60'

60'

60'

60'

60'

60'

60'

60'

60'

60'

60'

60'

60'

60'

60'

60'

60'

60'

60'

60'

60'

60'

60'

60'

60'

60'

60'

60'

60'

60'

60'

60'

60'

60'

60'

60'

60'

60'

60'

60'

60'

60'

60'

60'

60'

60'

60'

60'

60'

60'

60'

60'

60'

60

LOT-1
CABIN BRANCH FARM

- INVERT OUT OF HOUSE 590
- INVERT INTO SEPTIC TANK 589.6
- INVERT OUT OF SEPTIC TANK 589.25
- INVERT INTO DIST. BOX 589
- INVERT INTO TRENCH 588.5
- EXISTING GRADE @ TANK 593
- EXISTG GRADE @ BOX 592
- EXISTING GRADE @ TRENCH 592
- WELL ELEVATION 598

TWO TRENCHES OF EQUAL LENGTH

QUESTIONS

Bill Coleman
410-239-8330

ELLCOTT ROAD
 (EXISTING, 30' PUBLIC R/W - FUTURE)

George E. Fisher & Wife
719/0001
Zoned R

750/0105
(Zoned R)

VARIABLE WIDTH HOA EASEMENT FOR EQUET
EXISTING DRIVEWAY TO BE USED AS TRAIL
PROVIDE 6' MIN. TRAIL WIDTH BEYOND

S68°21'07" E

877.33'

