



LIVING SIDE ELEVATION
SCALE: 3/16" = 1'-0"

The information on this drawing is the property of Keystone Custom Homes, Inc. and is not to be used, copied, or reproduced in any form without the written consent of Keystone Custom Homes, Inc. All rights are reserved. © 2020 Keystone Custom Homes, Inc. All rights reserved. Keystone Custom Homes, Inc. is a registered professional engineering firm in the State of Maryland. License No. 35478. The information on this drawing is the property of Keystone Custom Homes, Inc. and is not to be used, copied, or reproduced in any form without the written consent of Keystone Custom Homes, Inc. All rights are reserved. © 2020 Keystone Custom Homes, Inc. All rights reserved. Keystone Custom Homes, Inc. is a registered professional engineering firm in the State of Maryland. License No. 35478. The information on this drawing is the property of Keystone Custom Homes, Inc. and is not to be used, copied, or reproduced in any form without the written consent of Keystone Custom Homes, Inc. All rights are reserved. © 2020 Keystone Custom Homes, Inc. All rights reserved. Keystone Custom Homes, Inc. is a registered professional engineering firm in the State of Maryland. License No. 35478.

227 GRANITE RUN DRIVE, SUITE 100
LANCASTER, PENNSYLVANIA 17601
PH: (717) 464-9060 • FAX: (717) 464-9046
www.keystonecustomhomes.com

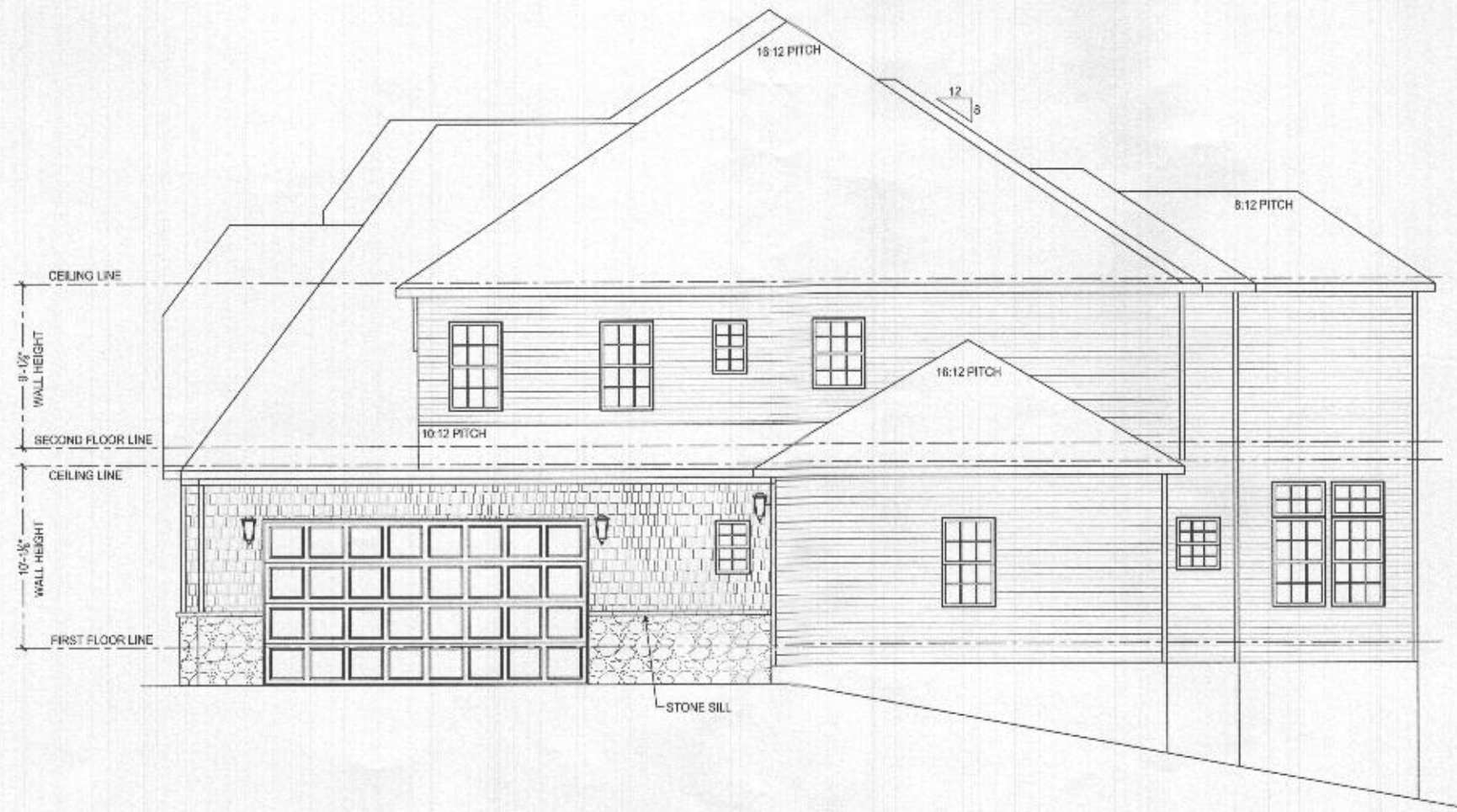


KEYSTONE CUSTOM HOMES, INC.



I, the undersigned, hereby certify that these drawings were prepared by me, or under my direct supervision and professional engineering, and the laws of the State of Maryland, License No. 35478, Expire Date 05-16-2027

PROJECT NO:	LIVING SIDE ELEVATION
DATE:	APRIL 7 2020
SCALE:	AS NOTED
DESIGNED BY:	MHERSHEY
CHECKED BY:	SKLAR
SHEET NO.:	A1.1
PLANS:	ads 20



GARAGE SIDE ELEVATION
SCALE: 1/8" = 1'-0"



Professional Certification: I hereby certify that
Paul E. Elser is a duly licensed professional engineer
under the laws of the State of Maryland
License No. 35473, Expiration Date: 04-01-2027.

The technical design
shown on this drawing is
the property of
Keystone Custom Homes,
Inc. and is to be used only
for the project and site
shown. No part of this
drawing may be reproduced
without the written consent
of Keystone Custom Homes,
Inc. All rights reserved.
This drawing is not to be
used for any other project
without the written consent
of Keystone Custom Homes,
Inc. All rights reserved.
Keystone Custom Homes,
Inc. is not responsible for
any errors or omissions
on this drawing. The user
of this drawing is advised
to verify all dimensions
and specifications
before construction.
Keystone Custom Homes,
Inc. is not responsible for
any errors or omissions
on this drawing.

227 GRANITE RUN DRIVE, SUITE 100
LANCASTER, PENNSYLVANIA 17601
PH: (717) 464-9060 • FAX: (717) 464-9046
www.keystonecustomhomes.com



KEYSTONE CUSTOM HOMES, INC.

PROJECT: GARAGE SIDE ELEVATION
DATE: APRIL 7 2020
DRAWN BY: MHERSHEY
CHECKED BY: SKLAR

SCALE: AS NOTED
DRAWN BY: MHERSHEY
CHECKED BY: SKLAR
DATE: APRIL 7 2020
PROJECT: GARAGE SIDE ELEVATION

© Keystone Custom Homes, Inc.

The architect, engineer, and contractor shall be jointly and severally liable for the accuracy of the information provided herein. The architect, engineer, and contractor shall be jointly and severally liable for the accuracy of the information provided herein. The architect, engineer, and contractor shall be jointly and severally liable for the accuracy of the information provided herein.

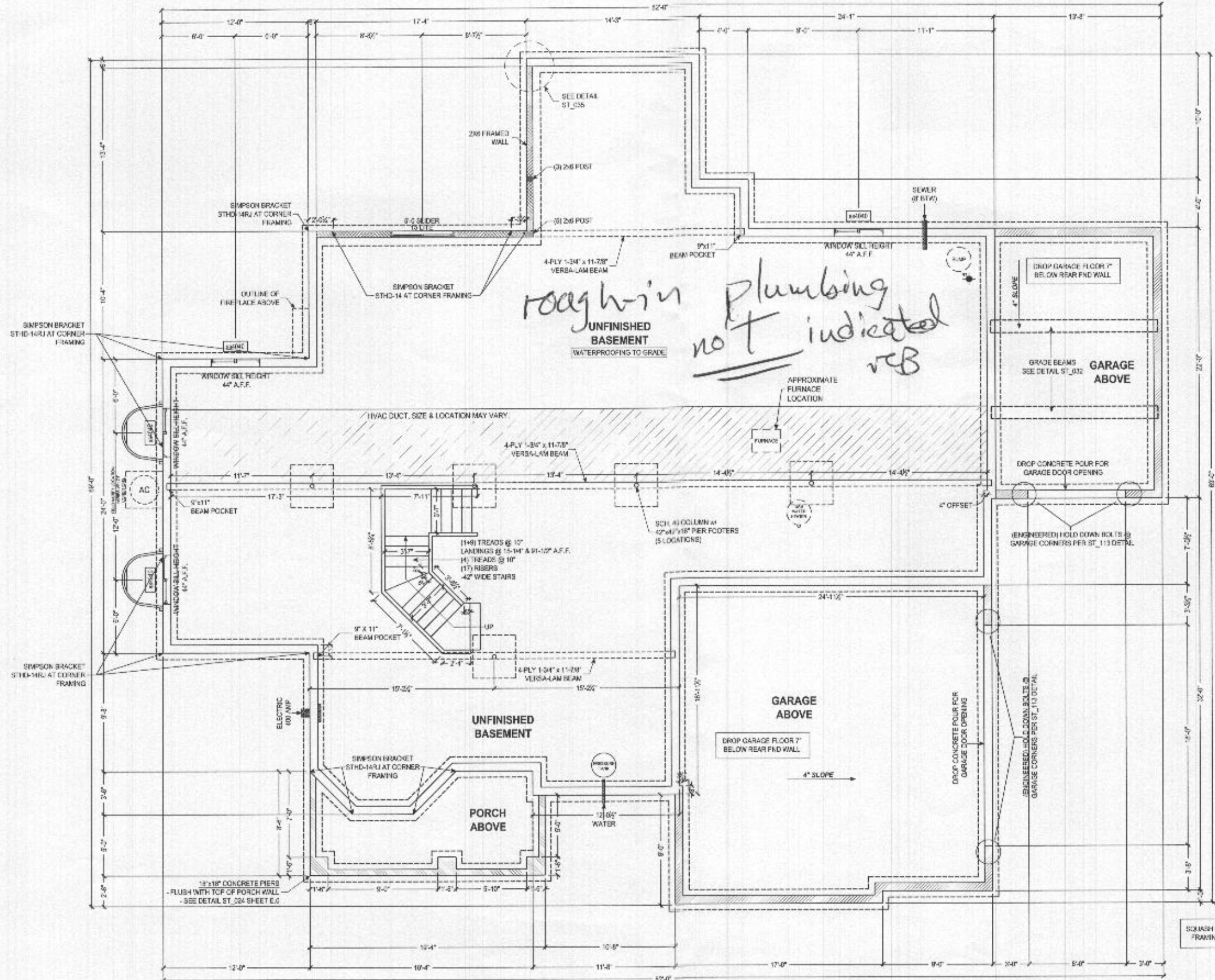
227 GRANITE RUN DRIVE, SUITE 100
LANCASTER, PENNSYLVANIA 17601
PH: (717) 464-9060 • FAX: (717) 464-9046
www.keystonecustomhomes.com



KEYSTONE CUSTOM HOMES, INC.



Professional Engineer, State of Maryland
Paul B. Elser, No. 95478
Professional Engineer



FOUNDATION PLAN
SCALE: 3/8" = 1'-0"

- 8" THICK POLISHED CONCRETE WALLS
- 12" HIGH CMU HOUSE BASEMENT WALLS 5/8" REBAR
- 4" THICK POLISHED CONCRETE WALLS
- CHECK P.I. FOR WALL HEIGHT OF CRACK SPACE AND GARAGE WALLS
- 8" THICK POLISHED CONCRETE WALLS
- CHECK P.I. FOR WALL HEIGHT OF FRONT PORCH WALLS

NOTE TO HOMEOWNERS:
LOCATIONS SHOWN FOR HVAC, PLUMBING, AND OTHER MECHANICAL ITEMS WILL BE LIMITED BY POSSIBLE ACTUAL PLACEMENT OF FURNACE, WATER HEATER, SUMP PUMP, ETC. ANY VARIATION TO BE CLARIFIED BY REQUIREMENTS.

FOUNDATION PLAN	MIR-021
NO.:	SKLAR
DATE:	APRIL 7 2020
SCALE:	AS NOTED
DRAWN BY:	M. HERSHEY
CHECKED BY:	P.L.2
DATE:	ADS 20