

PARTIAL BASEMENT PLAN

W/ OPT. GUEST BEDROOM

1/4"=1'-0"

UNLESS OTHERWISE NOTED ALL INTERIOR PARTITIONS TO BE 3/2" UNLESS OTHERWISE NOTED WINDOW ROUGH OPENING HEIGHT TO BE 6'-11" A.T.O.S.

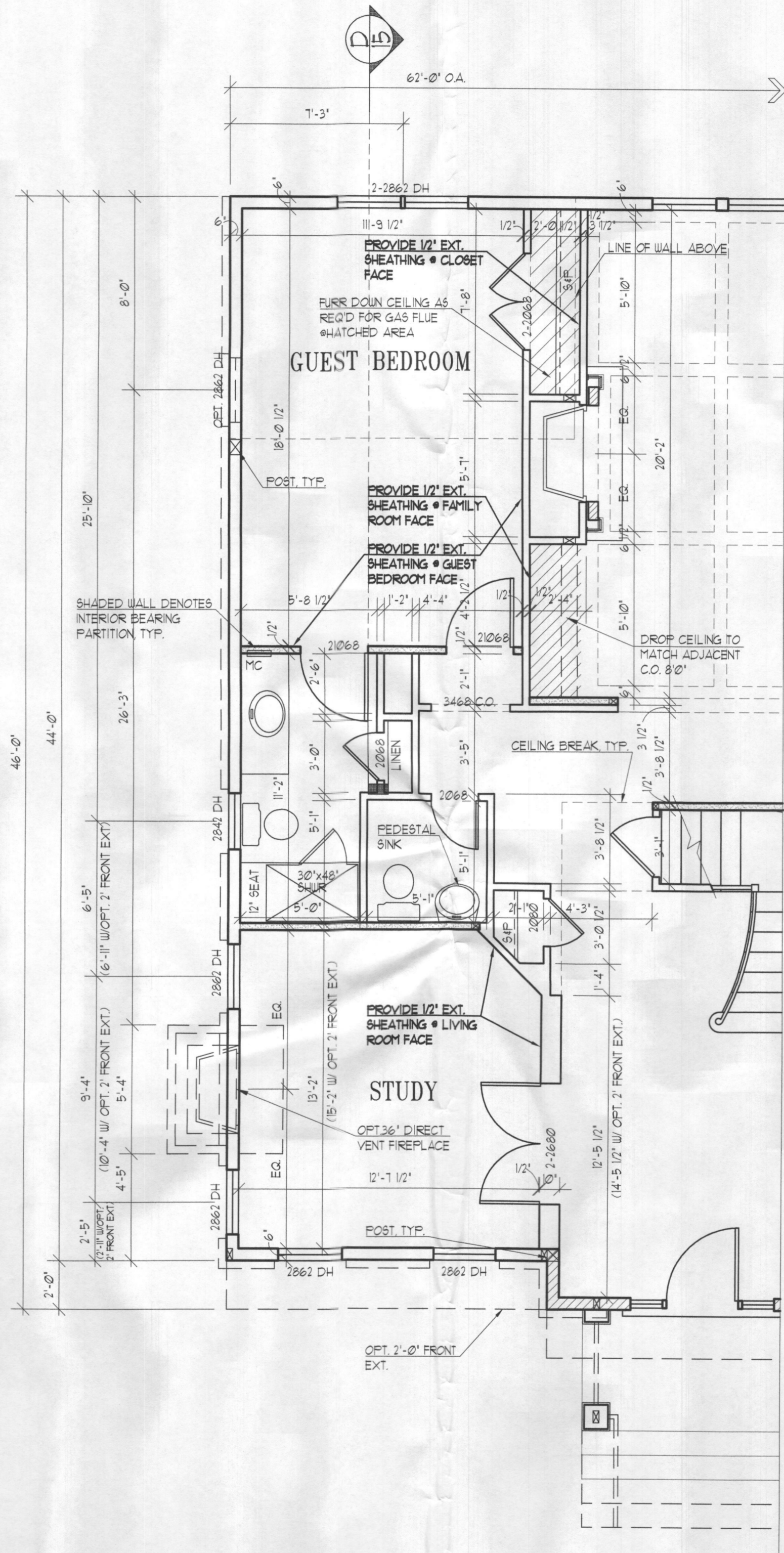
REFER TO STANDARD BSMT.FNDN. & LOWER FLOOR PLAN FOR INFORMATION NOT SHOWN OR LABELED IN PARTIAL

NOTE: FOR LATERAL WALL BRACING INFORMATION & REQUIREMENTS, REFER TO 8-xx SHEETS.

ADJUSTABLE STEEL COLUMNS

THE FOLLOWING ARE APPROVED 2 GAUGE (0.120 IN.) ADJUSTABLE STEEL COLUMNS FOR USE AS SPECIFIED AS "ADJ. STL. COL." IN THESE CONSTRUCTION DRAWINGS:

- 1) ARCO - 12" ADJUSTABLE COLUMN (CC-ES REPORT: ESR-1482)
- 2) AKRON - FIXED & ADJUSTABLE COLUMNS (CC-ES REPORT: ESR-161)
- 3) MARSHALL - EXTEND-O-COLUMN (AT-ES CODE COMPLIANCE REPORT: CORR-0148)



PARTIAL LOWER FLOOR PLAN

W/ OPT. GUEST BEDROOM

1/4"=1'-0"

UNLESS OTHERWISE NOTED ALL INTERIOR PARTITIONS TO BE 3/2" UNLESS OTHERWISE NOTED WINDOW ROUGH OPENING HEIGHT TO BE 8'-3" A.S.F.

Yes

Date	AC 03/01/16 CS
	FS 05/04/16 AM
	BS 09/01/16 JR
	CS 7/16/18 JSU

Project Number: 13051-06

ASHBROOKE

MITCHELL BEST HOMES

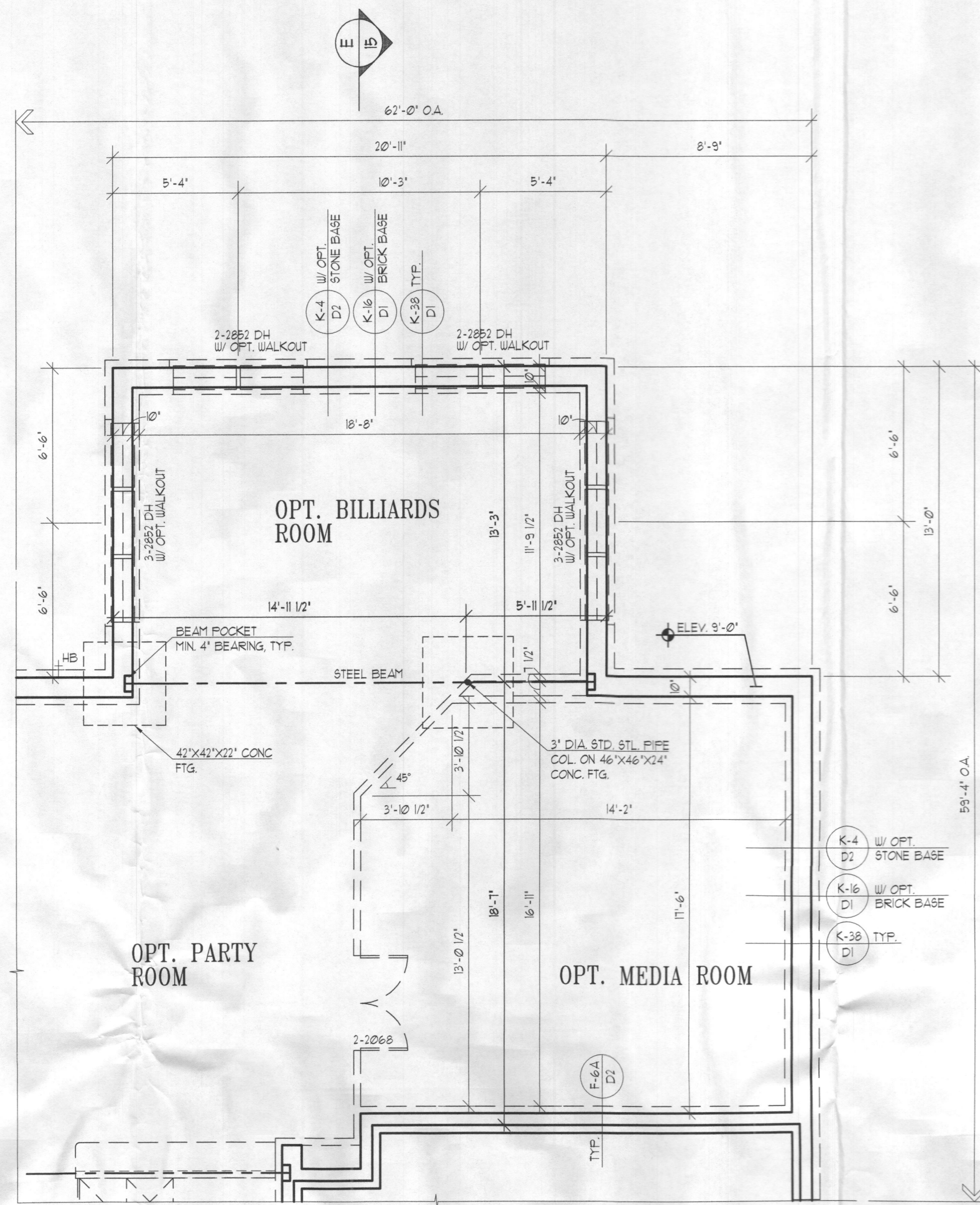
Architect

SUTTON YANTIS ASSOCIATES ARCHITECTS

8300 Boone Blvd. Tel: 703.734.9733
 Vienna, VA 22186 Fax: 703.847.0171
 www.syaa.com

Sheet Number

6



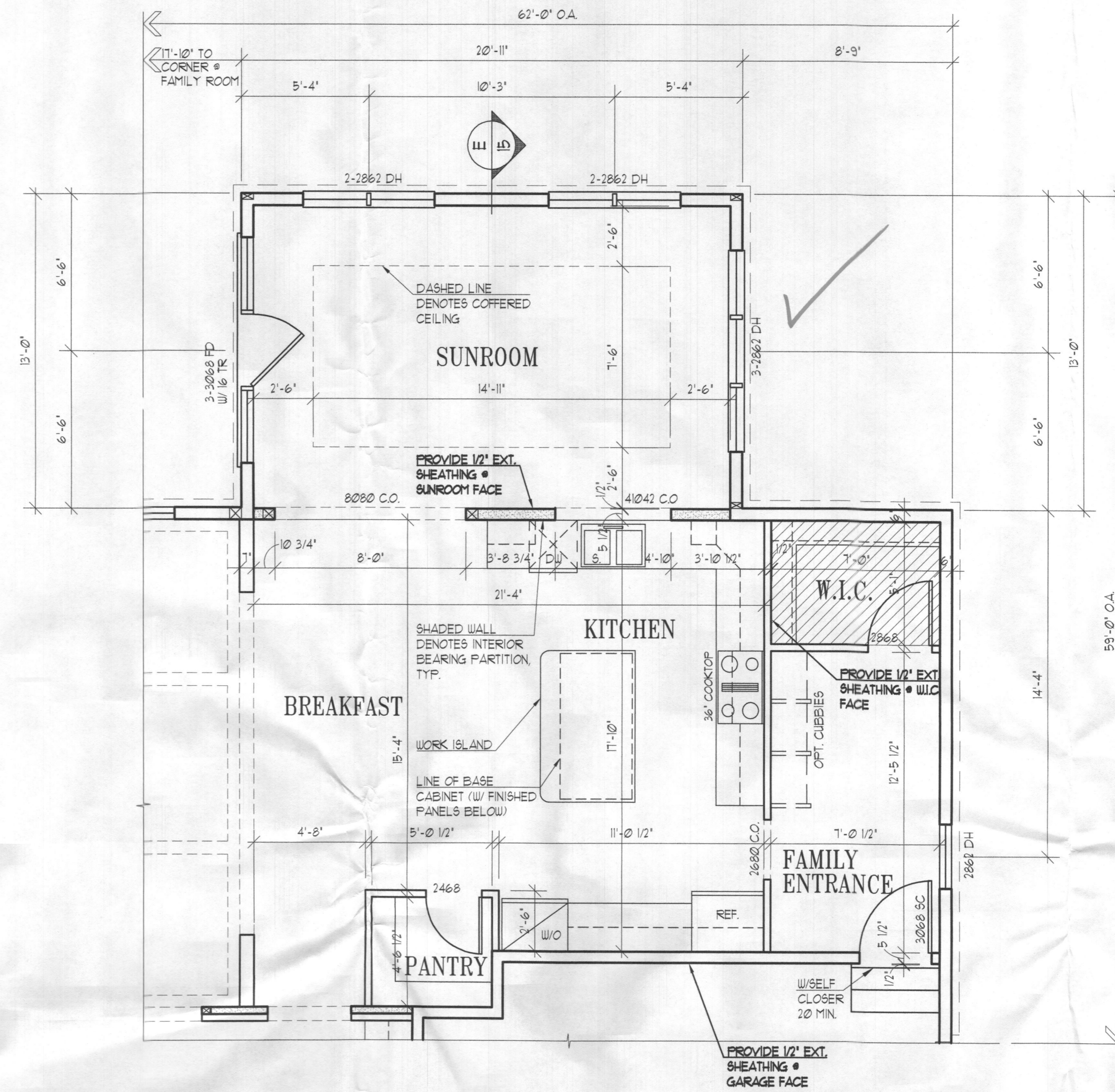
REFER TO STANDARD BSMT.FIN PLAN FOR INFORMATION NOT SHOWN OR LABELED IN PARTIAL

PARTIAL BASEMENT PLAN

W/ OPT. REAR SUNROOM

1/4"=1'-0"

UNLESS OTHERWISE NOTED ALL INTERIOR PARTITIONS TO BE 3/2"
UNLESS OTHERWISE NOTED WINDOW ROUGH OPENING HEIGHT TO BE 6'-11" AT OS.



REFER TO STANDARD LOWER FLOOR PLAN FOR INFORMATION NOT SHOWN OR LABELED IN PARTIAL

PARTIAL LOWER FLOOR PLAN

W/ OPT. REAR SUNROOM

1/4"=1'-0"

UNLESS OTHERWISE NOTED ALL INTERIOR PARTITIONS TO BE 3/2"
UNLESS OTHERWISE NOTED WINDOW ROUGH OPENING HEIGHT TO BE 8'-3" A.S.F.

NOTE:
FOR LATERAL WALL BRACING
INFORMATION & REQUIREMENTS,
REFER TO 3-x SHEETS.

Date	AC 03/07/16 CS
	FS 05/04/16 AM
	BS 03/01/16 JR
	CS 11/21/16 JSU

Project Number: 13051-01

ASHBROOKE
MITCHELL BEST HOMES

Architect

SUTTON
YANTIS
ASSOCIATES

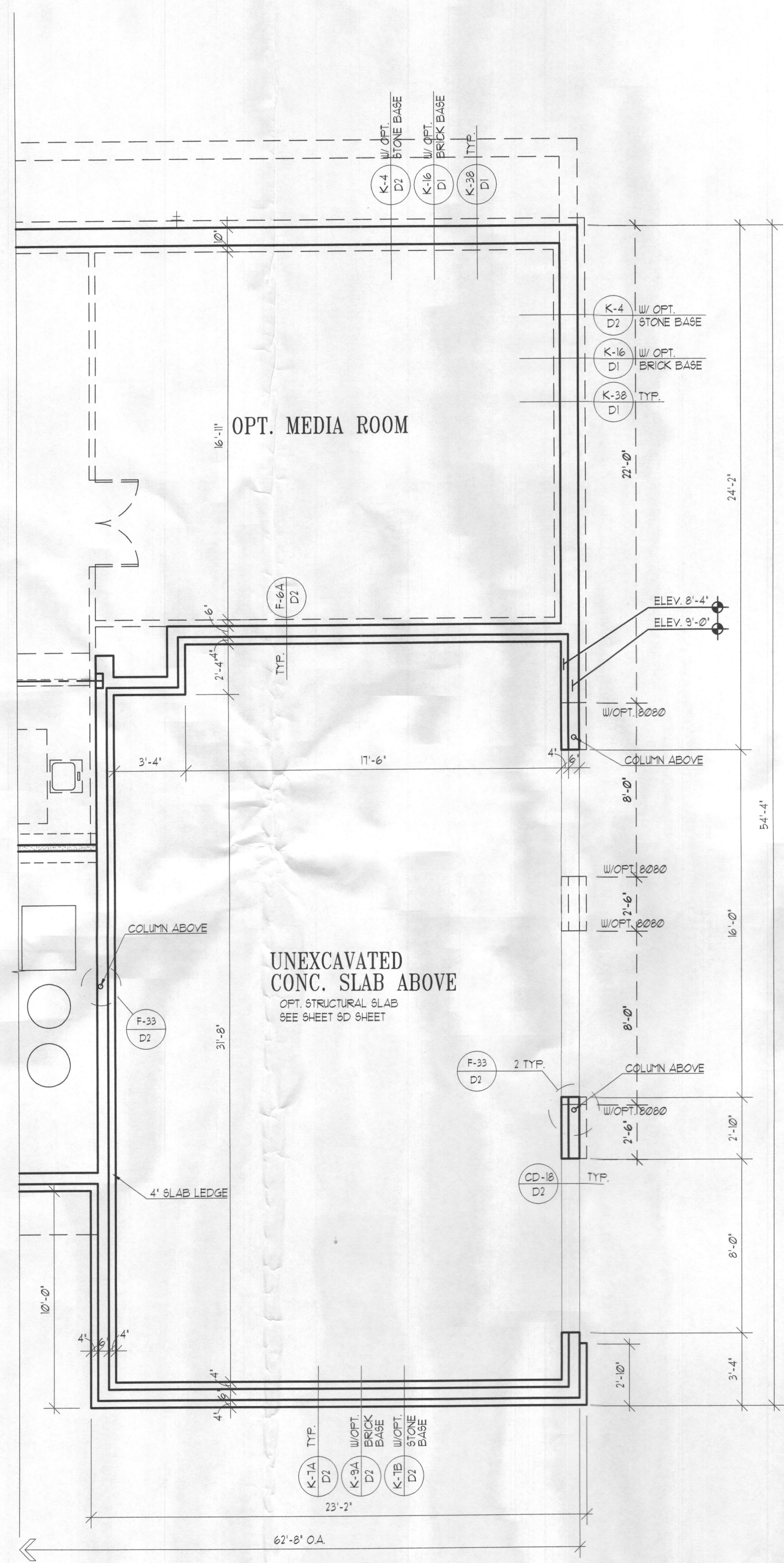
ARCHITECTS

8300 Boone Blvd. Tel: 703.734.9733
Vienna, VA 22182 Fax: 703.847.0171

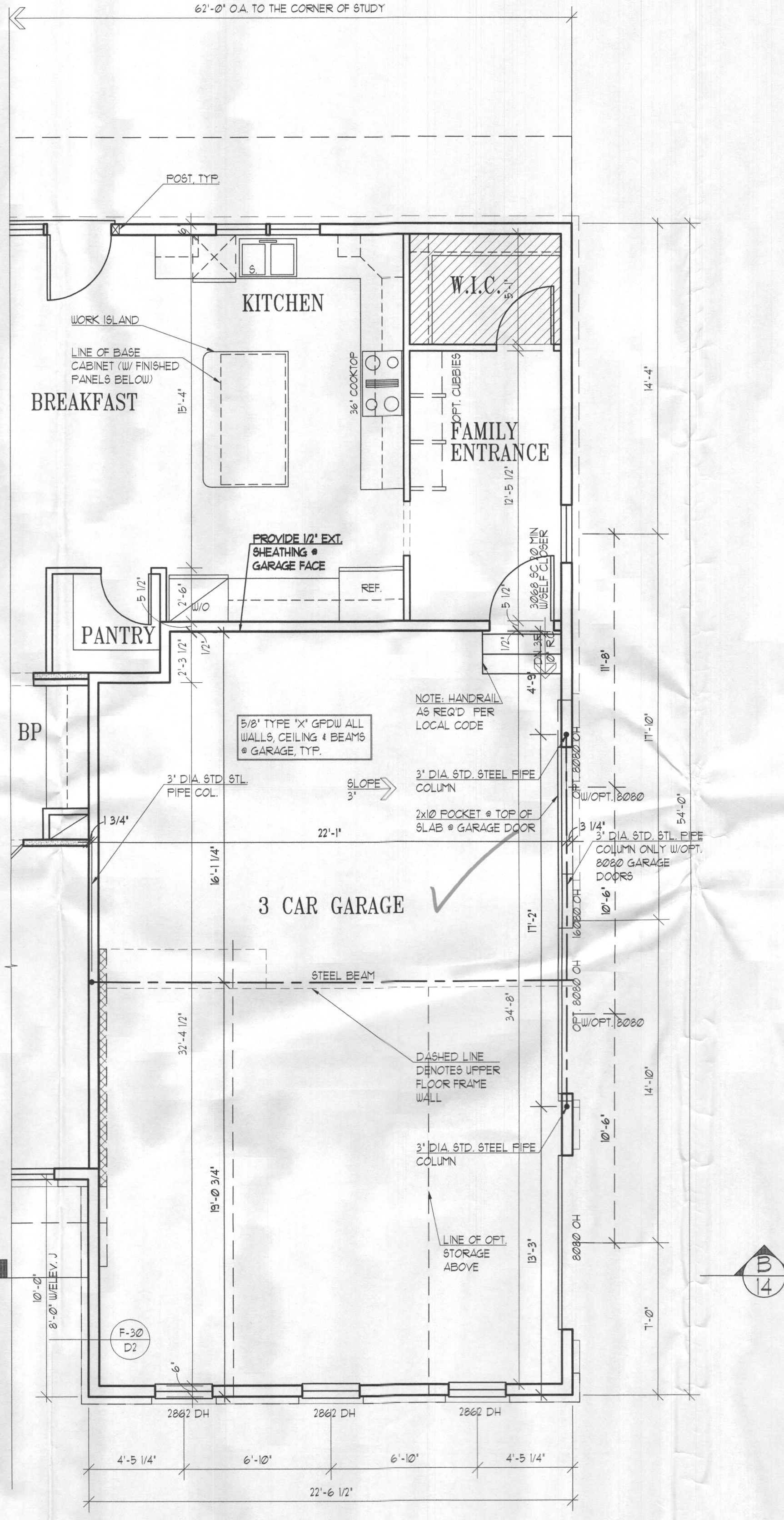
WWW.SYGA.COM

Sheet Number

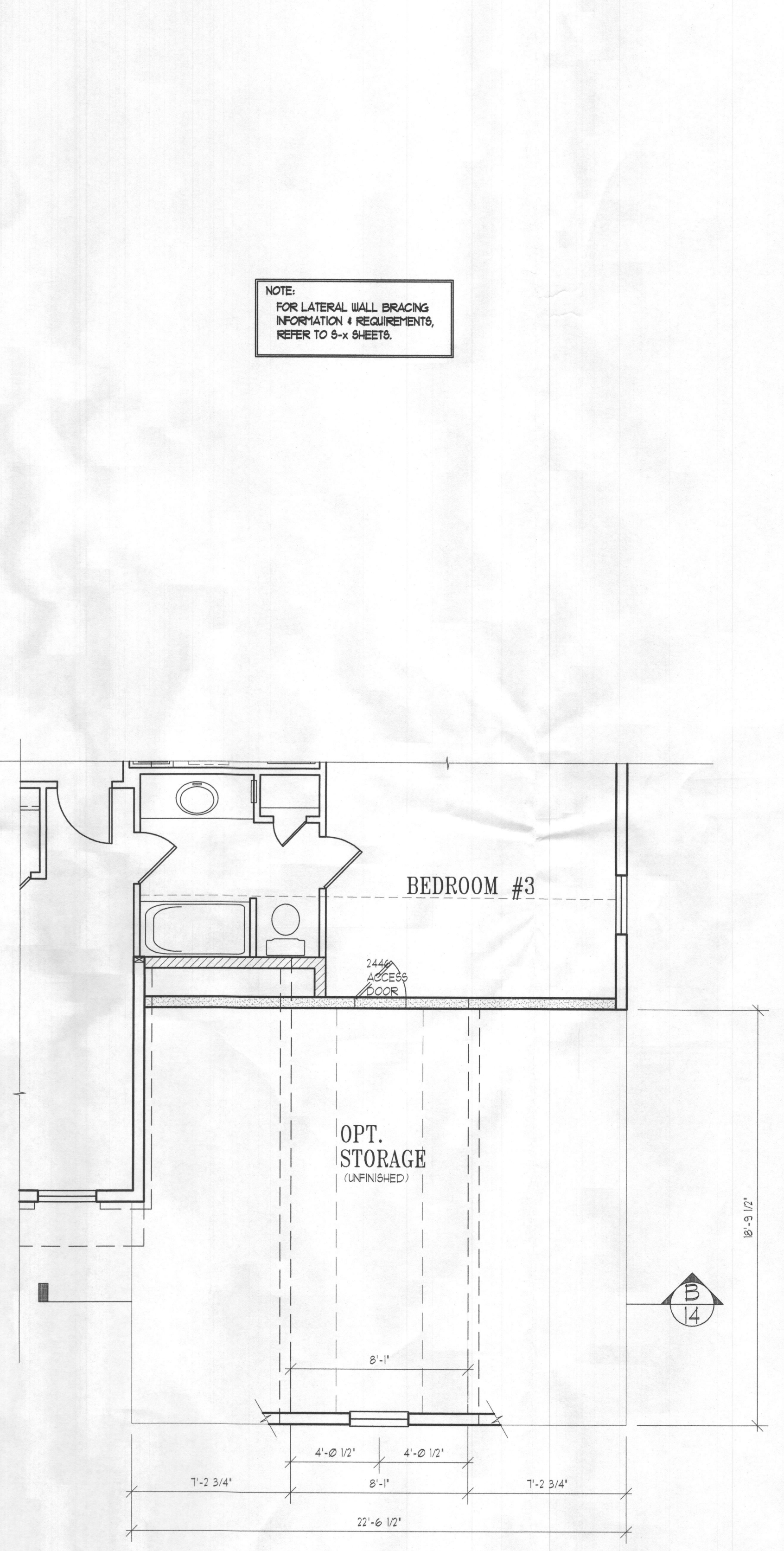
7



PARTIAL FOUNDATION/BASEMENT FLOOR PLAN
W/OPT. 3-CAR SIDELOAD GARAGE 1/4"=1'-0"



PARTIAL LOWER FLOOR PLAN
W/OPT. 3-CAR SIDELOAD GARAGE 1/4"=1'-0"



PARTIAL UPPER FLOOR PLAN
W/OPT. 3-CAR SIDELOAD GARAGE 1/4"=1'-0"

Date	AC 03/07/16 CS
PS 05/04/16 AT	
BS 09/01/16 JR	
CS 12/08/16 JSJ	

Project Number: 130251-09

**ASHBROOKE
MITCHELL BEST HOMES**

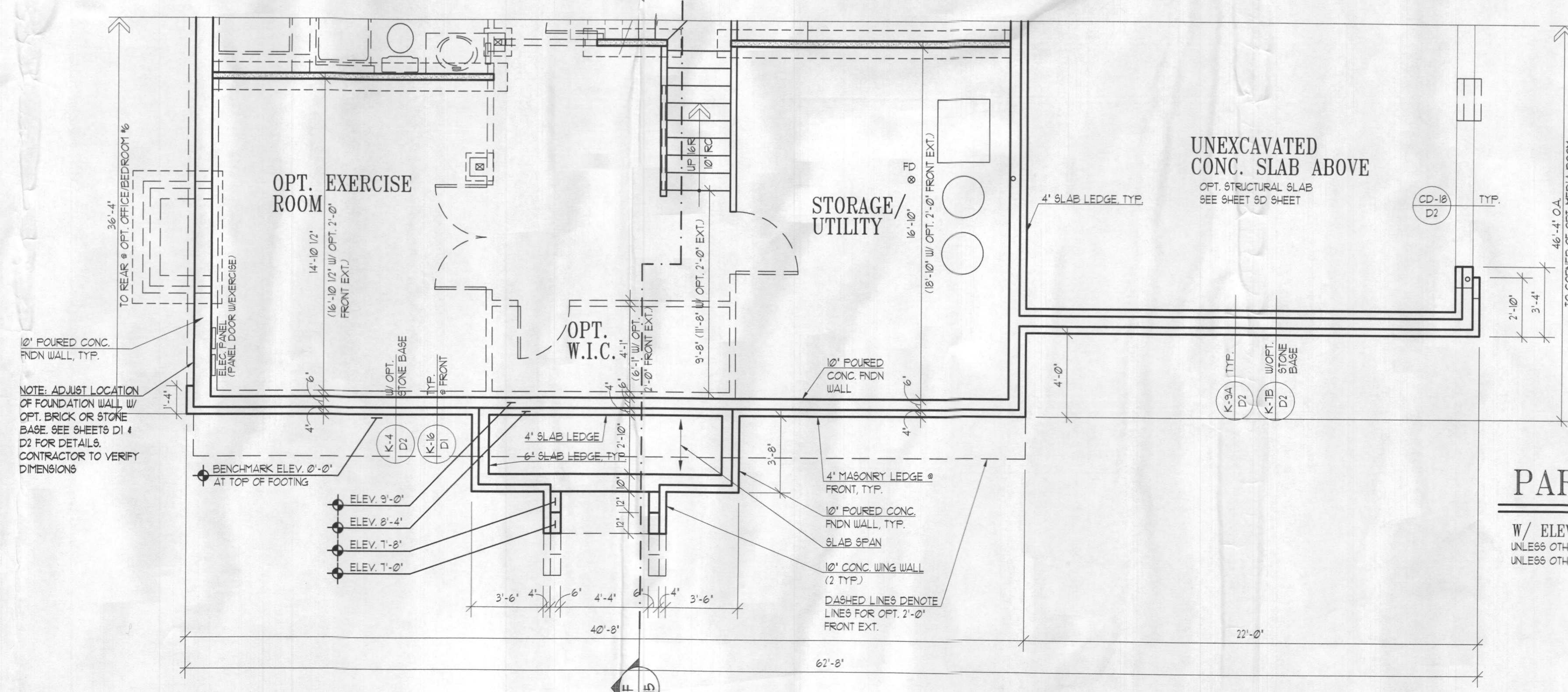
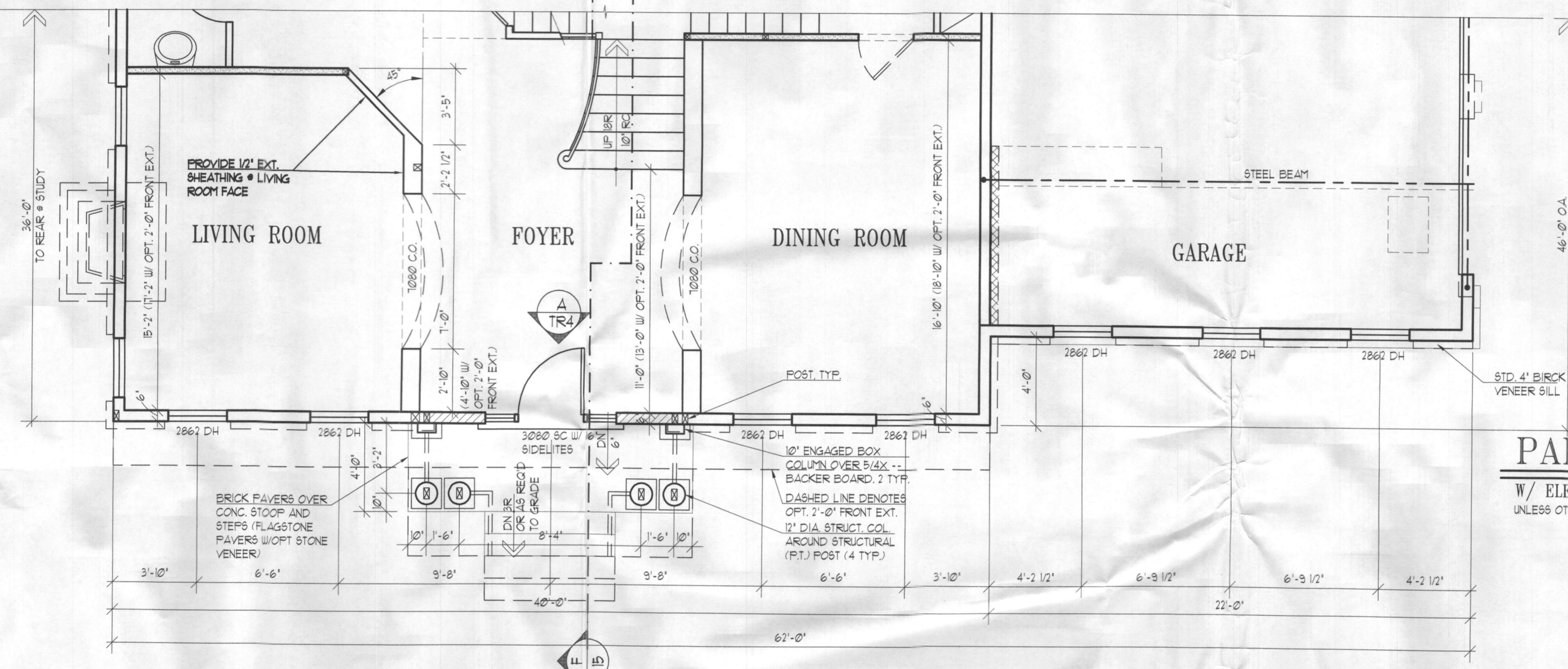
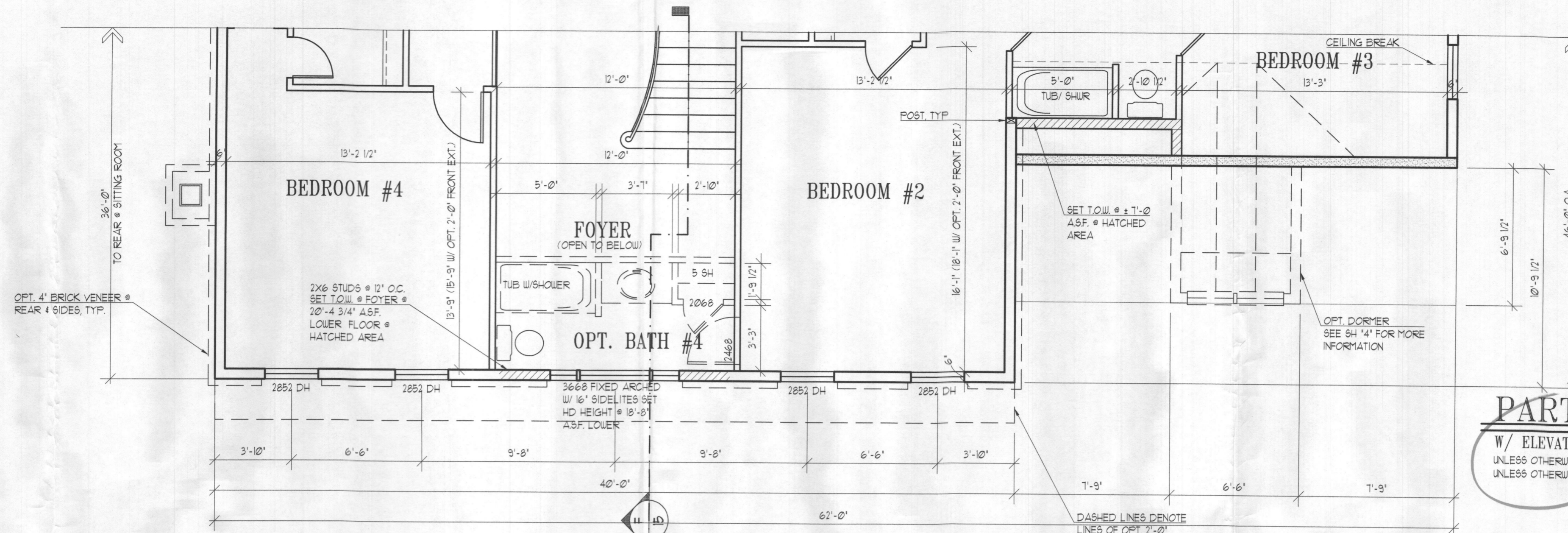
Architect

**SUTTON
YANTIS
ASSOCIATES**

ARCHITECTS

8300 Boone Blvd., Tel: 703.734.9733
Vienna, VA 22182 Fax: 703.847.9171

www.syaa.com



Date	AC 03/07/16 CS
PS	05/04/16 AM
BS	03/01/16 JR
CS	11/06/16 BH

Project Number: 15051-10

ASHBROOKE MITCHELL BEST HOMES

Architect

SUTTON YANTIS ASSOCIATES ARCHITECTS

www.syaab.com
 4800 Peachtree Ave., Ste. 700, Atlanta, GA 30340
 404.525.1111

Sheet Number

10