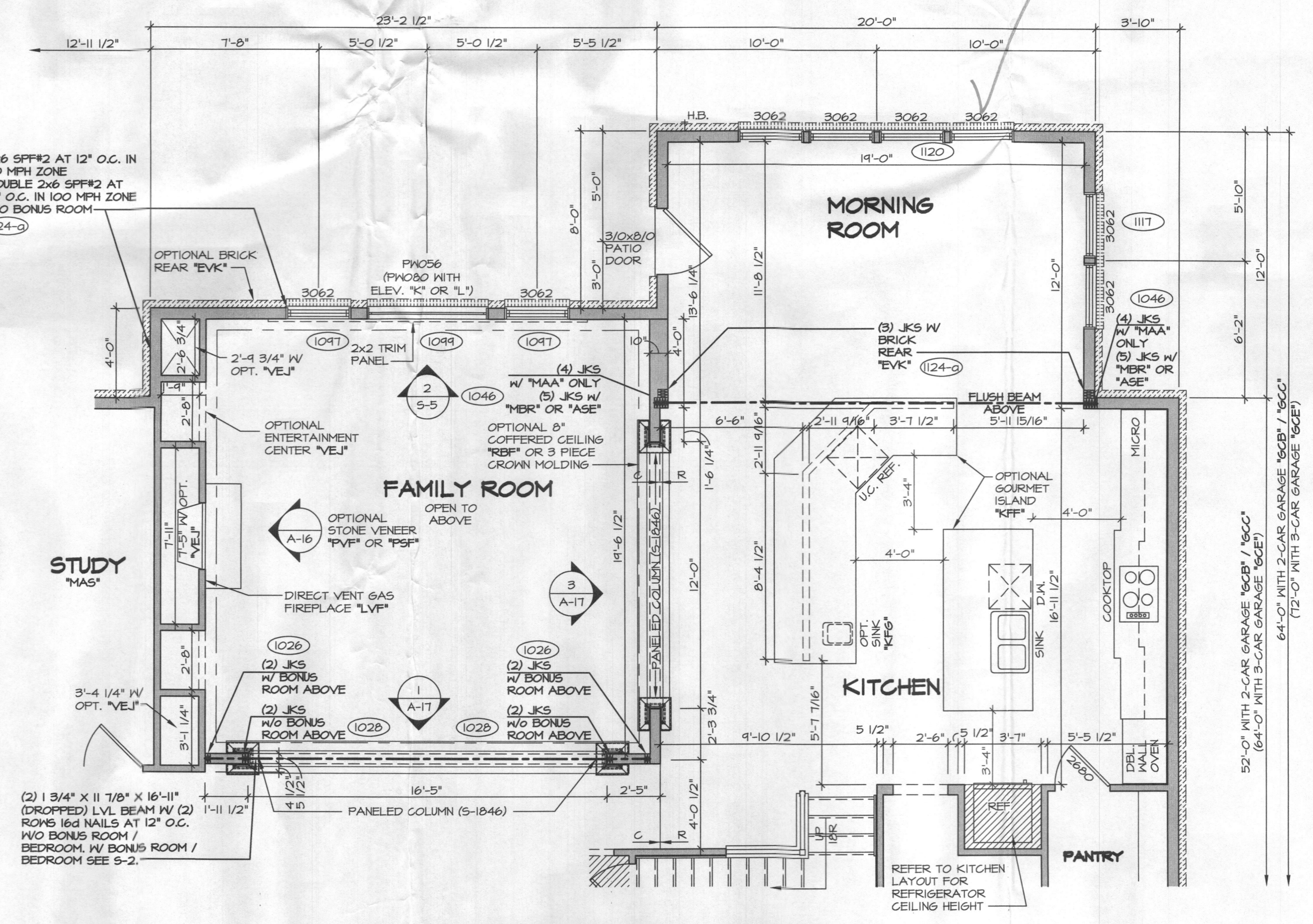
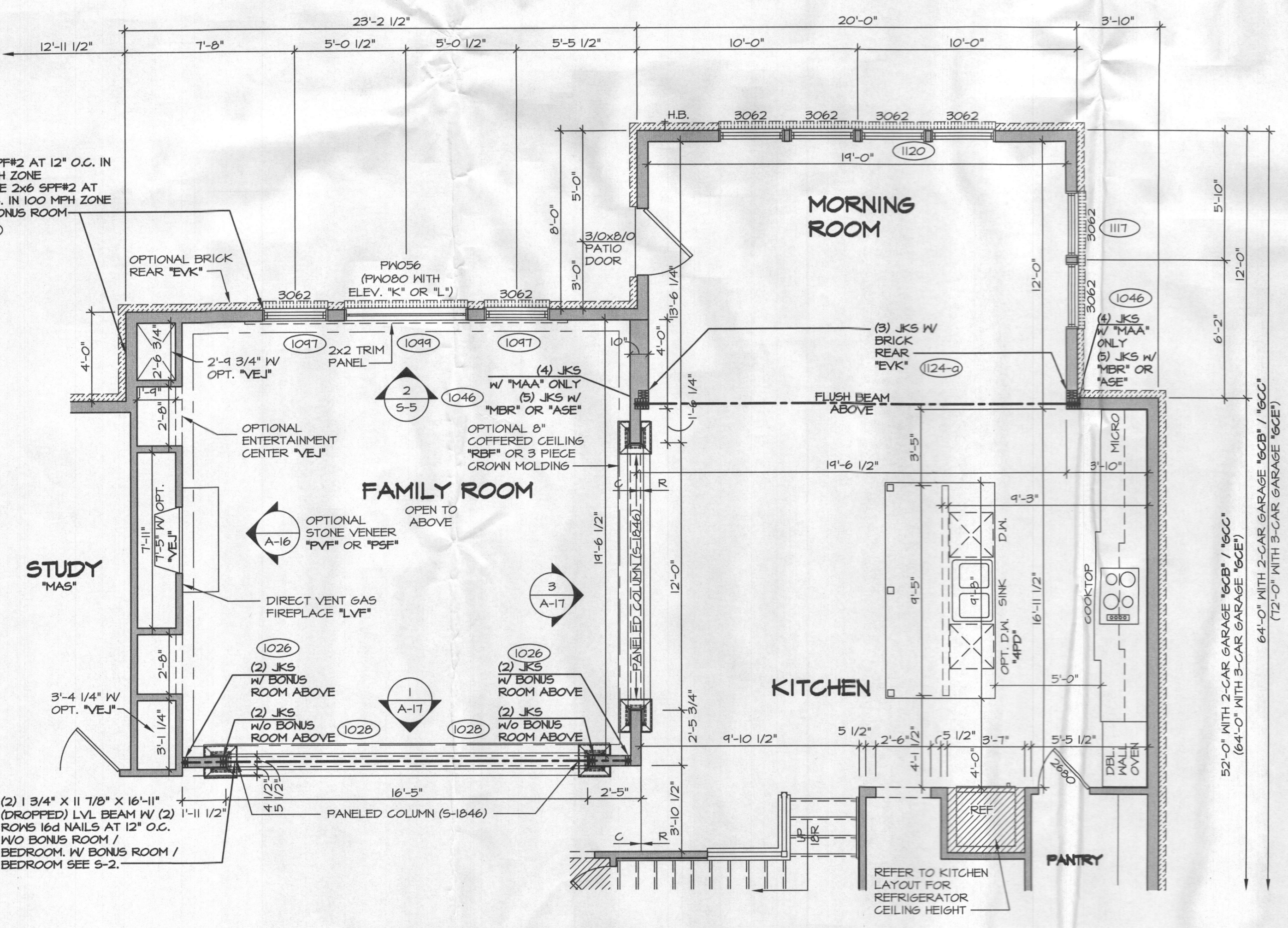
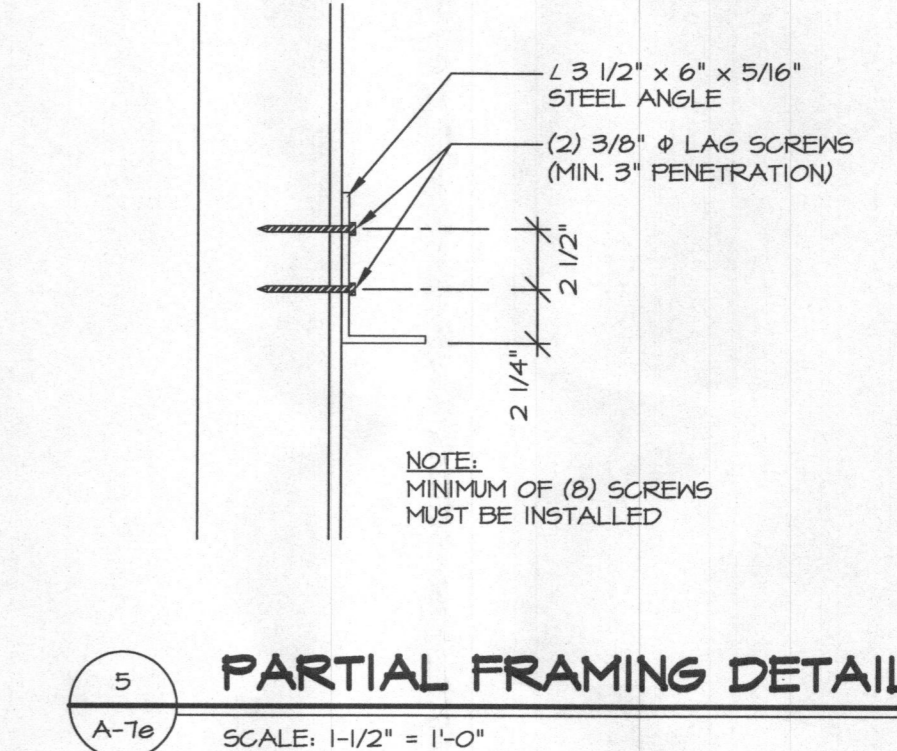
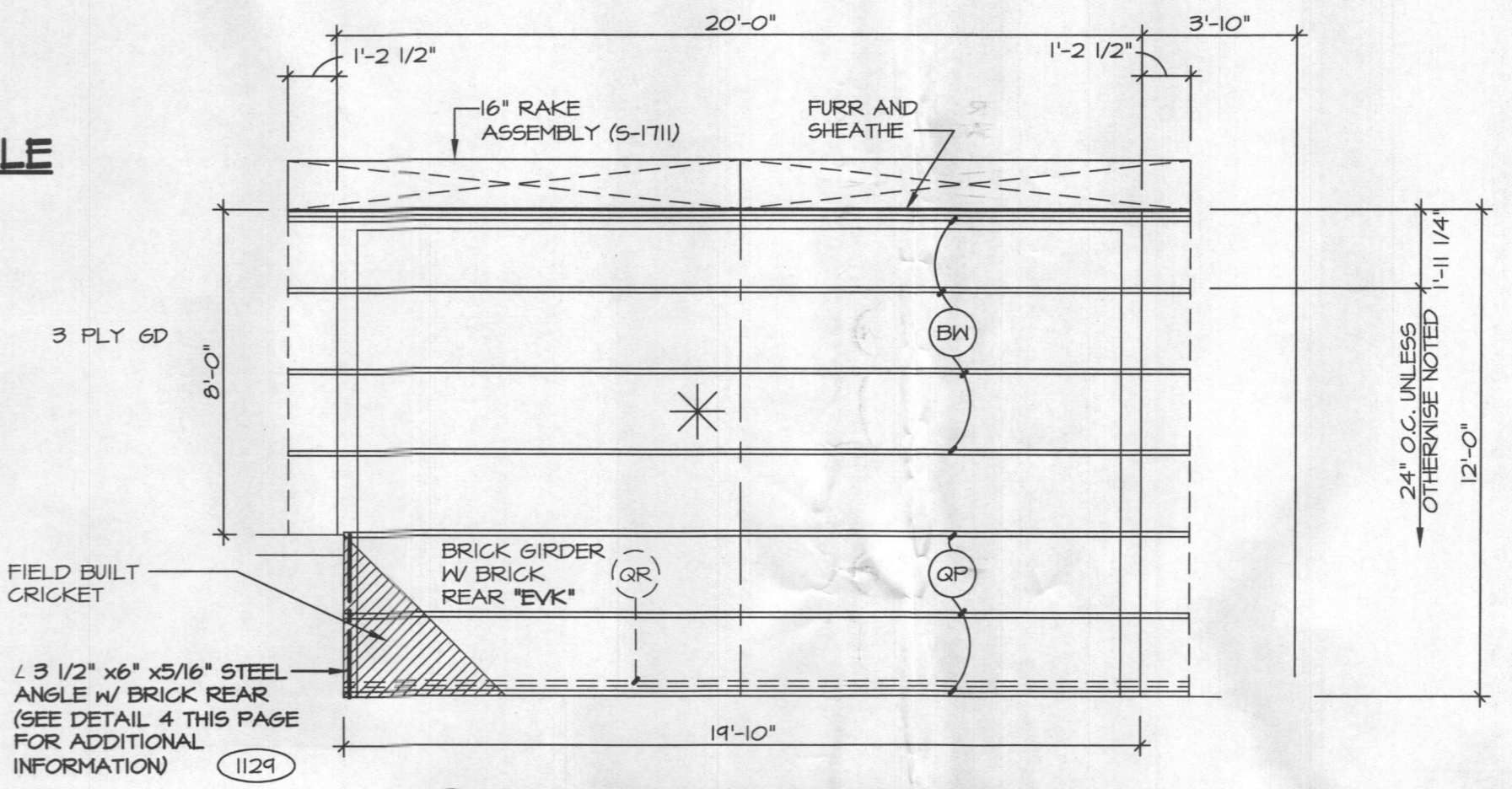


TRUSS SCHEDULE

(BK)	NV-00066	NS-00066	19'-11"	5/12
(QP)	NV-01303	NS-01303	19'-4 1/2"	5/12
(QR)	NV-01304	NS-01304	19'-4 1/2"	5/12

ROOF VENTILATION (A/300)

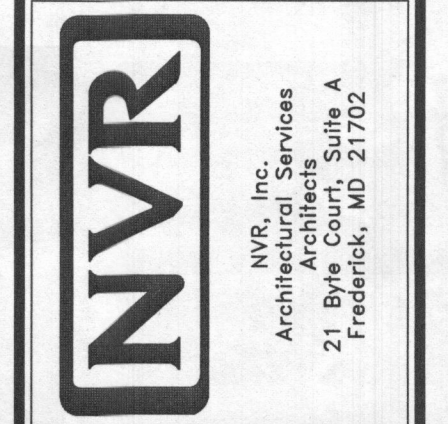
TOTAL PLAN AREA:	42,631	SQ./IN.
TOTAL VENTILATION REQ'D:	142	SQ./IN.
ACTUAL VENTILATION:		
RIDGE VENT:	262	SQ./IN.
ROOF VENT - HIGH:	172	SQ./IN.
SOFFIT VENT:	12	SQ./IN.
ROOF VENT - LOW:	12	SQ./IN.
ACTUAL VENTILATION TOTAL:	334	SQ./IN.



REMARKS

REV. NO.	DATE	DESCRIPTION
1	5/29/15	5/29/15 SHPK - REVISED KITCHEN ISLAND W/ OPTION "KFF" PAR 30712
2	6/2/15	5/29/15 SHPK - REVISED KITCHEN ISLAND W/ OPTION "KFF" PAR 30712
3	6/2/15	5/29/15 SHPK - REVISED KITCHEN ISLAND W/ OPTION "KFF" PAR 30712
4	6/2/15	5/29/15 SHPK - REVISED KITCHEN ISLAND W/ OPTION "KFF" PAR 30712
5	6/2/15	5/29/15 SHPK - REVISED KITCHEN ISLAND W/ OPTION "KFF" PAR 30712
6	6/2/15	5/29/15 SHPK - REVISED KITCHEN ISLAND W/ OPTION "KFF" PAR 30712
7	6/2/15	5/29/15 SHPK - REVISED KITCHEN ISLAND W/ OPTION "KFF" PAR 30712
8	6/2/15	5/29/15 SHPK - REVISED KITCHEN ISLAND W/ OPTION "KFF" PAR 30712
9	6/2/15	5/29/15 SHPK - REVISED KITCHEN ISLAND W/ OPTION "KFF" PAR 30712

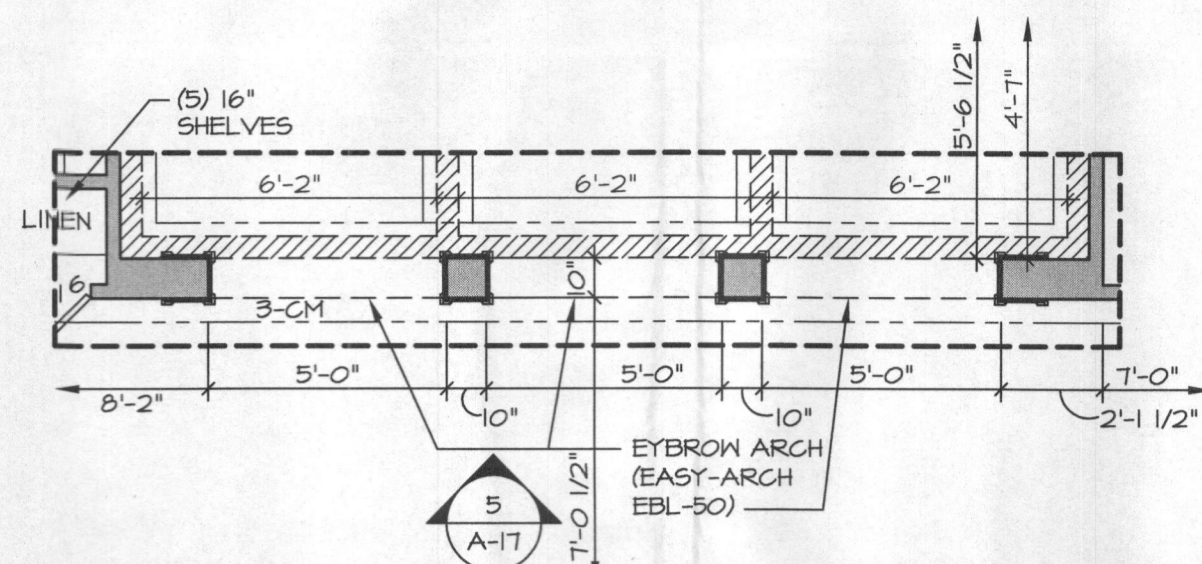
NVR, Inc., owner, expressly reserves its common law copyright and other property rights in these plans. These plans are not to be reproduced, copied, or otherwise used in any way without the prior written consent of NVR, Inc. The expressed written consent of NVR, Inc.



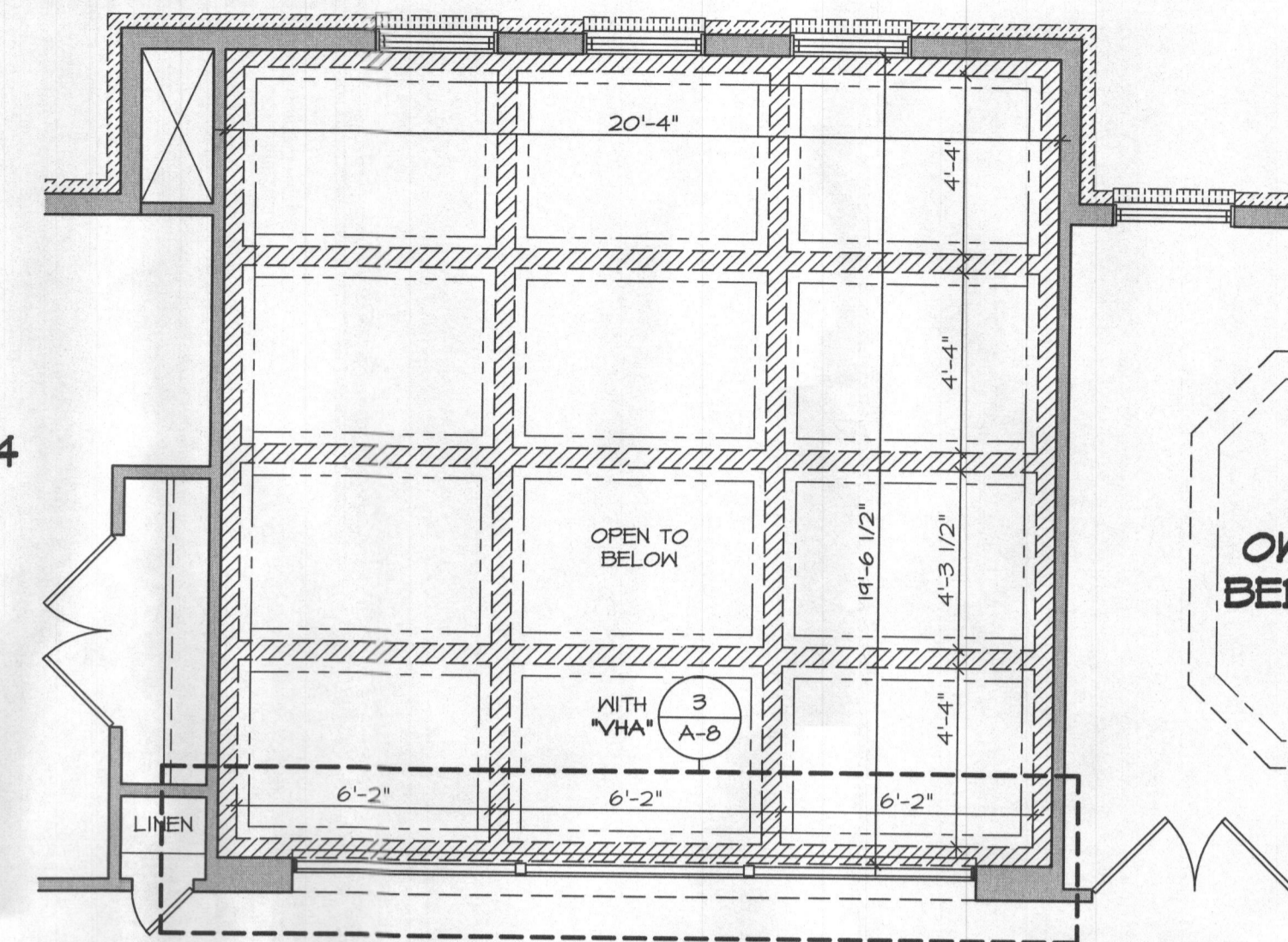
SET NO. 10200
VERSION 01
DRAWN BY JEA
DATE: 5/14/15
OPTION
EEN

MODEL
REGENT'S PARK II
DRAWING TITLE
FIRST FLOOR PLAN PARTIAL
OPTION DESCRIPTION
4'-0" EXTENSION TO FAMILY ROOM

SHEET NO.
A-7e
53

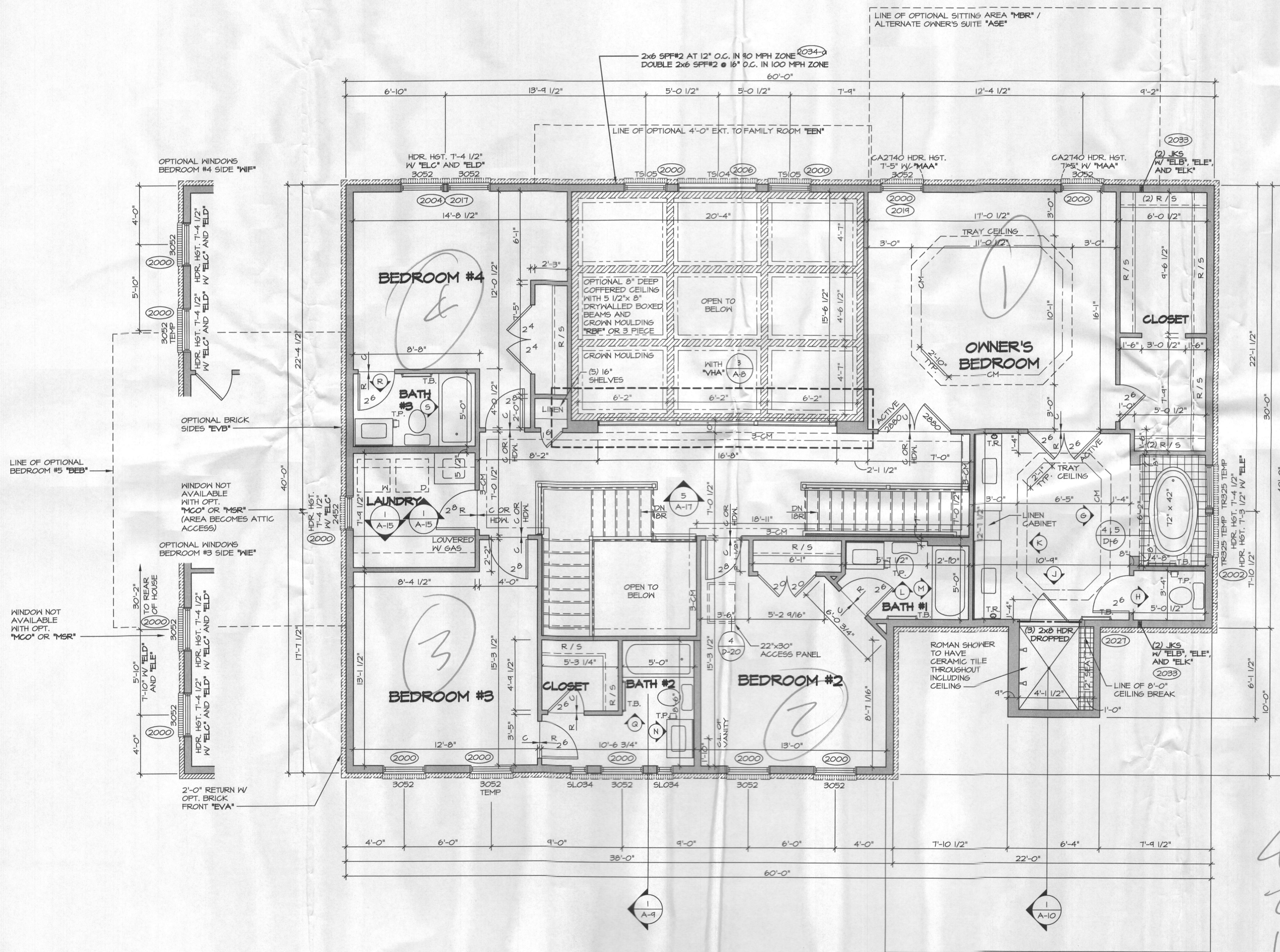


3 SECOND FLOOR PLAN PARTIAL
SCALE: 1/4" = 1'-0" OPTIONAL MEDITERRANEAN TRIM "VHA"



BEDROOM #4

2 SECOND FLOOR PLAN PARTIAL
SCALE: 1/4" = 1'-0" OPTIONAL COFFERED CEILING "RBF" AND 4'-0" EXTENSION TO FAMILY ROOM "EEN"



1 SECOND FLOOR PLAN
SCALE: 1/4" = 1'-0" ELEVATION "A" "ELA"

*4 Bedrooms
2nd floor
1st floor
Basement
6 Bedrooms*

NOTES:

1. ALL HEADERS ARE (3) 2x6, UNLESS OTHERWISE NOTED.
2. ALL EXTERIOR WALLS ARE 6" UNLESS OTHERWISE NOTED. ALL INTERIOR WALLS ARE 3 1/2" UNLESS OTHERWISE NOTED.
3. HATCHED AREAS INDICATE DROPPED CEILINGS.
4. ALL CASED OPENINGS AT 6'-11", UNLESS OTHERWISE NOTED.
5. WASHER ALWAYS ON THE LEFT PER PLAN OR REVERSE PLAN (WHERE APPLICABLE).

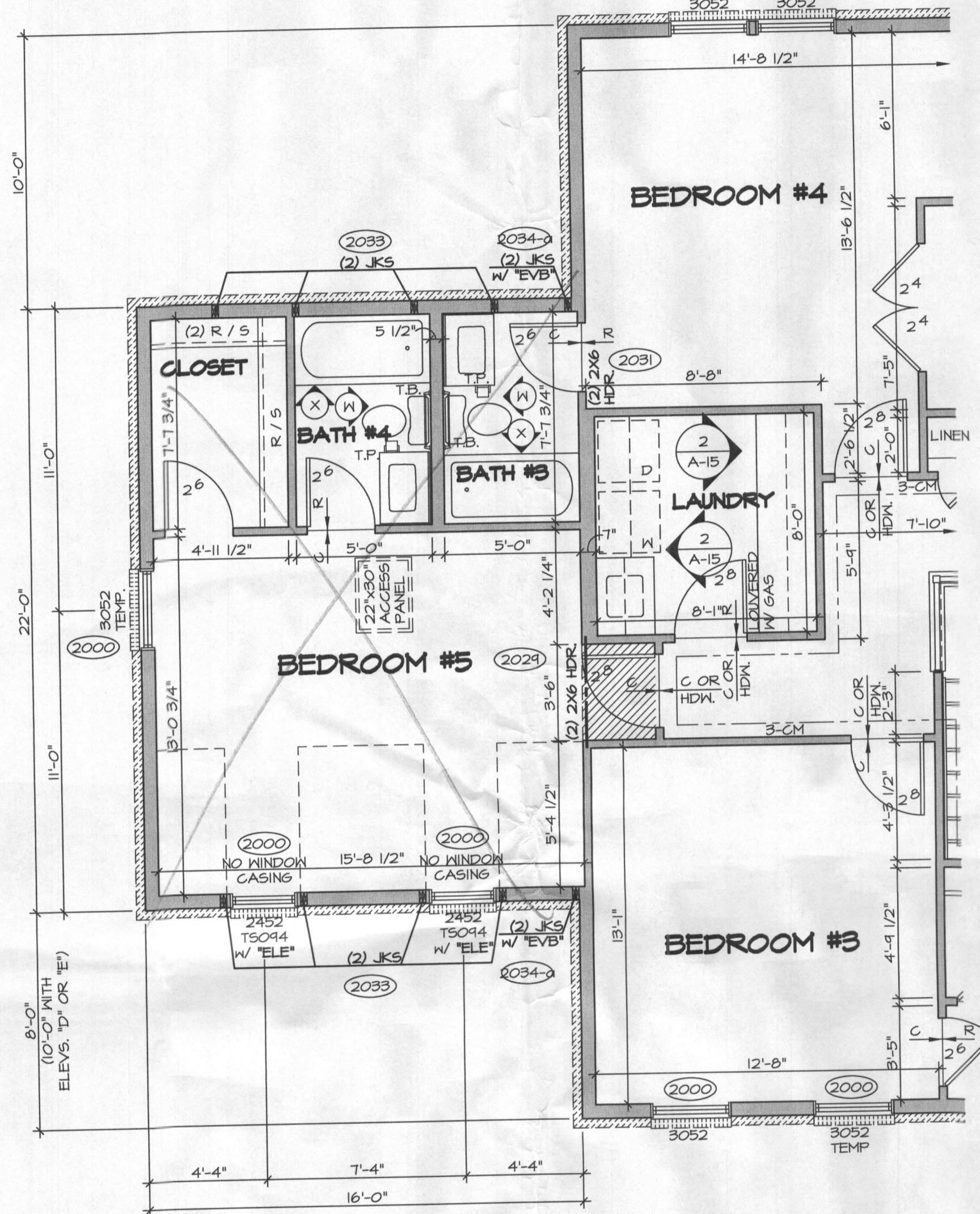
NOTE:

SEE SHEET S-5 FOR BRACED WALL PANEL LOCATIONS

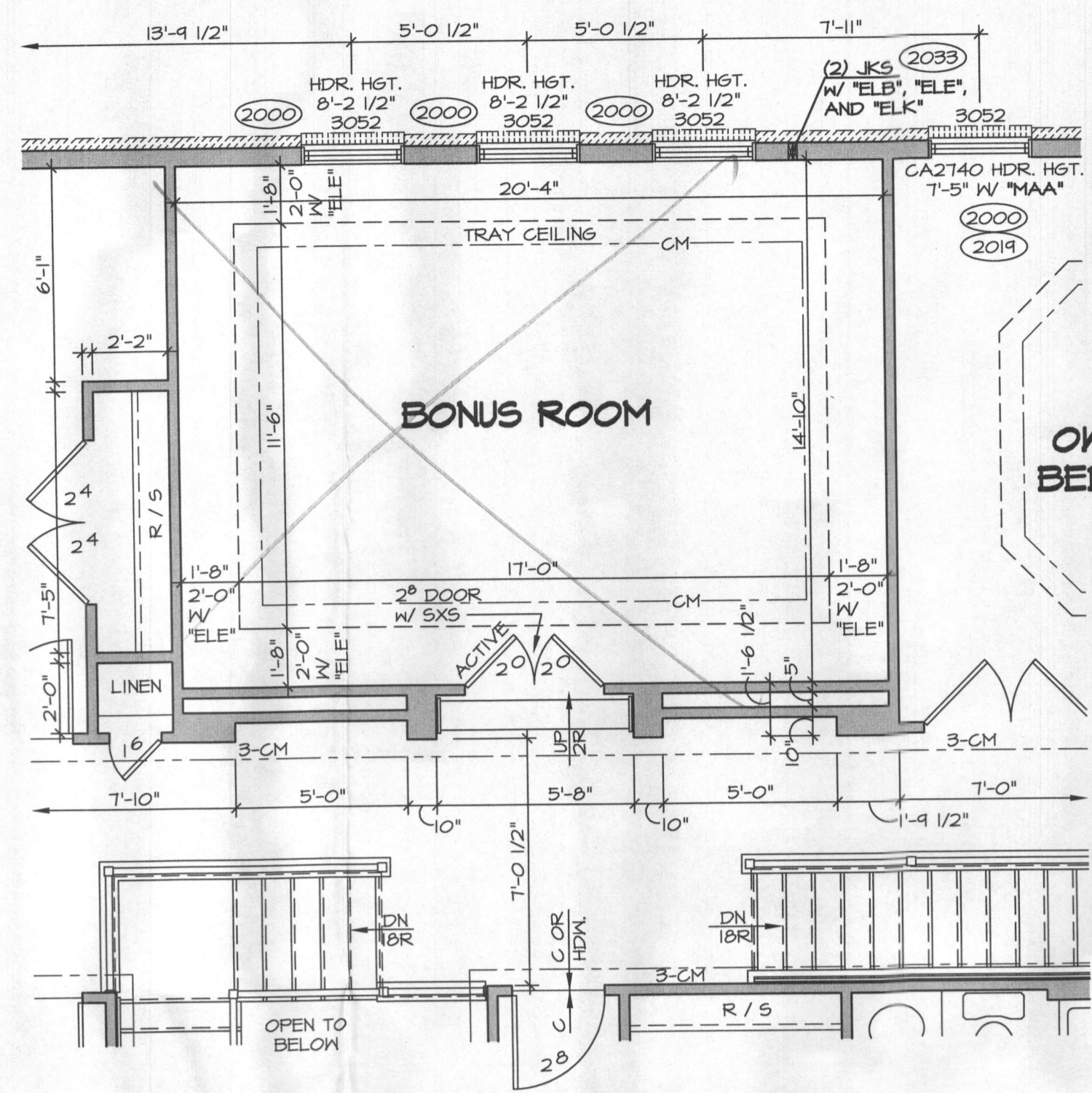
REV. NO.	DATE	DESCRIPTION	REMARKS
10	9/7/15	DDB - AUDIT REVISIONS	
11	2/20/17	KAD - PROJECT #1055 - ADDED CENTER TOP LAYOUT FOR OWNER'S BATH	
12	10/15/14	RVS - INCREASE LAUNDRY BY 2', DECREASE BRNS #4 (28/26/4)	
13	10/16/14	LJR - SHORTENED REAR STAIRS (2' FOUND THRU PAR #28/5)	
14	11/7/14	CSB - TRIM AUDIT REVISIONS	
15	2/10/15	SKM - ADDED DETAIL BUBBLE FOR TUB ACCESS PANEL PAR 30/152	
16	3/17/15	SKM - ADDED PAD WALL TO OWNER'S SHOWER	
17	3/17/15	SKM - ADDED DOOR TO LAUNDRY ROOM	
18	4/20/15	SKM - PAR #32/456 - CENTERED DOOR TO LAUNDRY ROOM	
19	5/15/15	SKM - SHIFTED LAUNDRY / BATH TO ACCOMMODATE DOOR TRIM PAR 32/456	

NVR
NVR, Inc. Services
Architectural Suite A
21 Bye Court, Suite A
Frederick, MD 21702

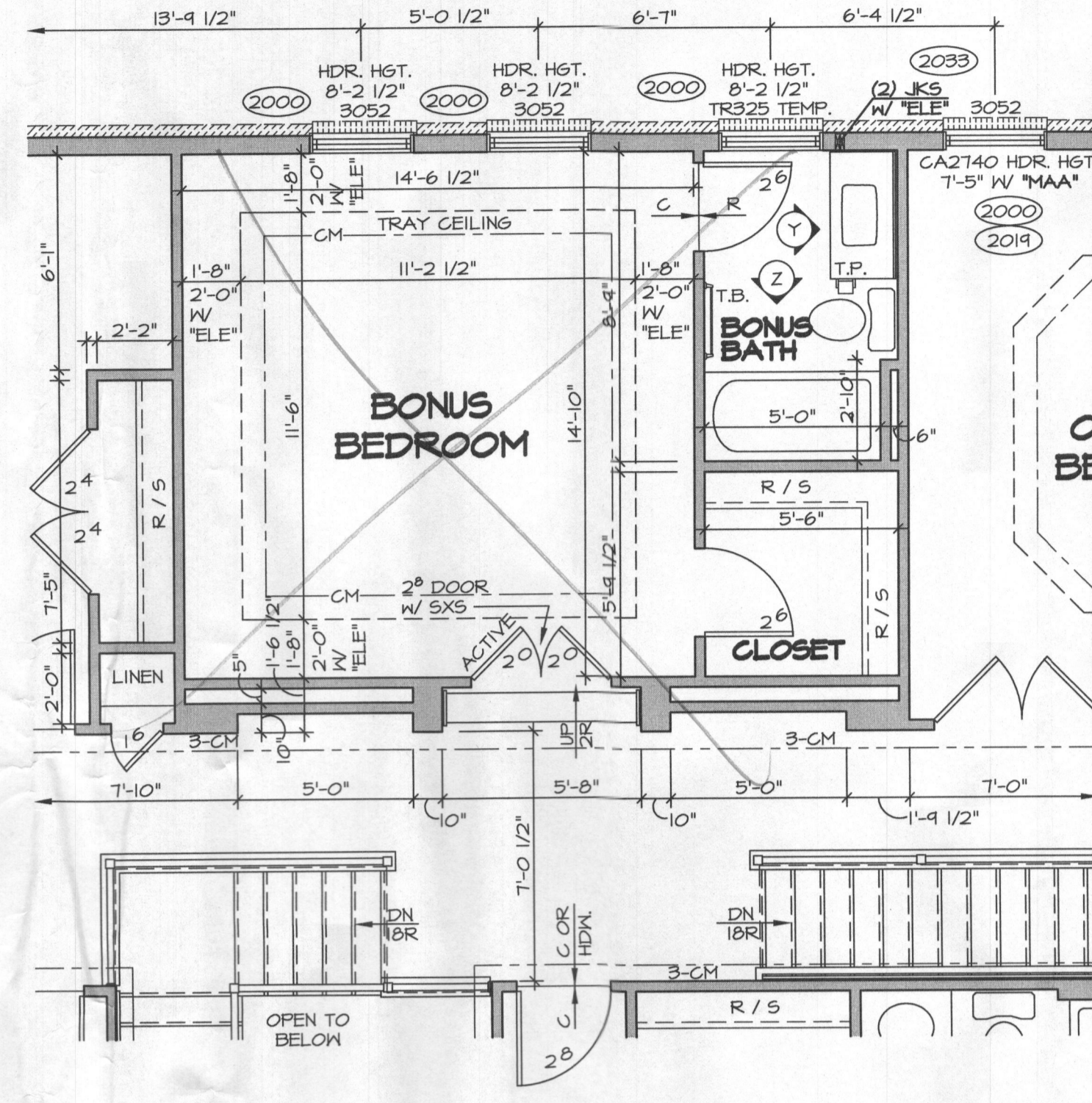
MODEL	REGENT'S PARK II
VERSION	01
DRAWN BY	DRA
DATE	3/14/15
OPTION	OPTION
SHEET NO.	A-8
DRAWING TITLE	SECOND FLOOR PLAN
OPTION DESCRIPTION	
SHEET NO.	54



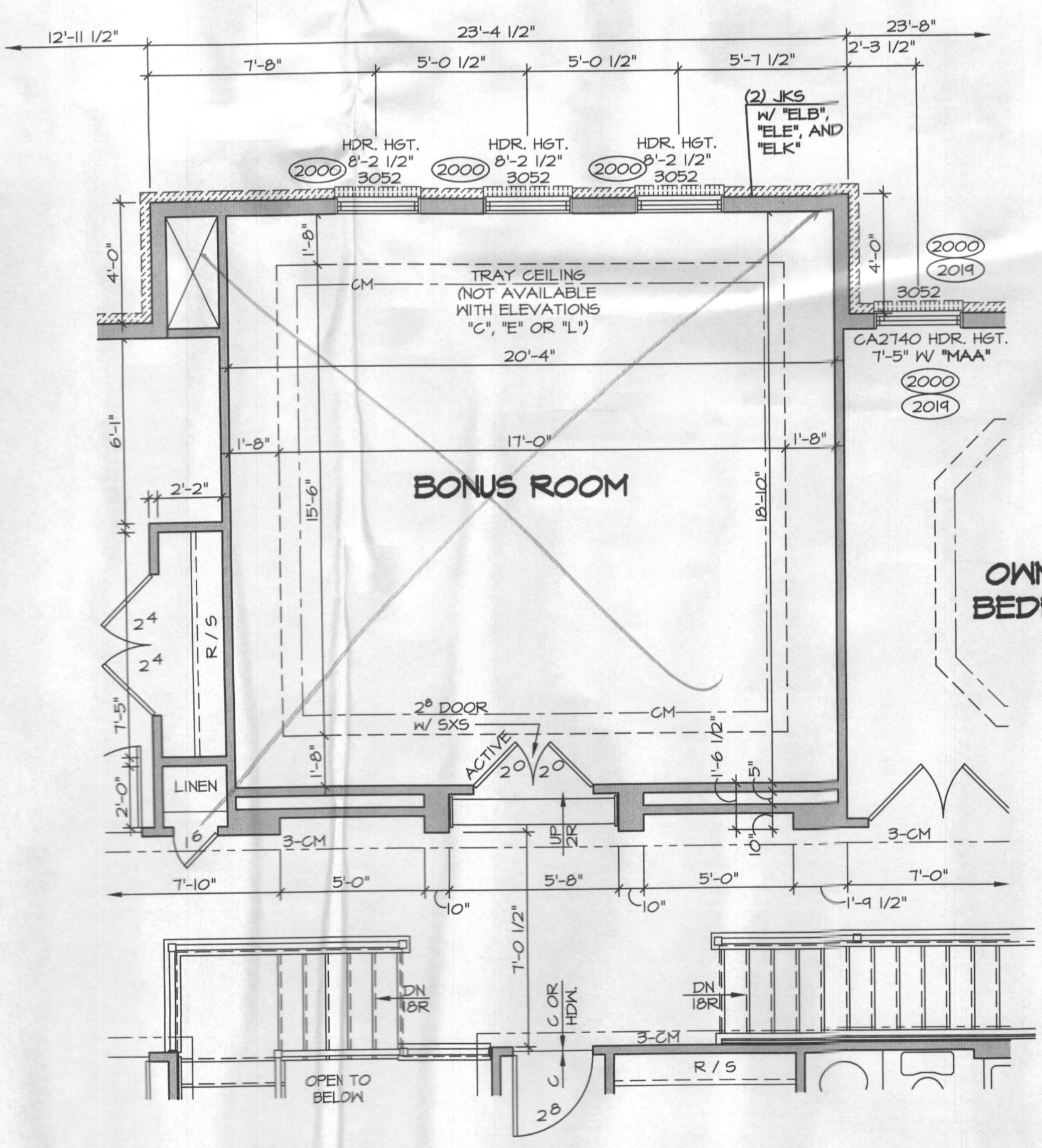
1 SECOND FLOOR PLAN PARTIAL
 SCALE: 1/4" = 1'-0"
 BEDROOM #5 "BEB"



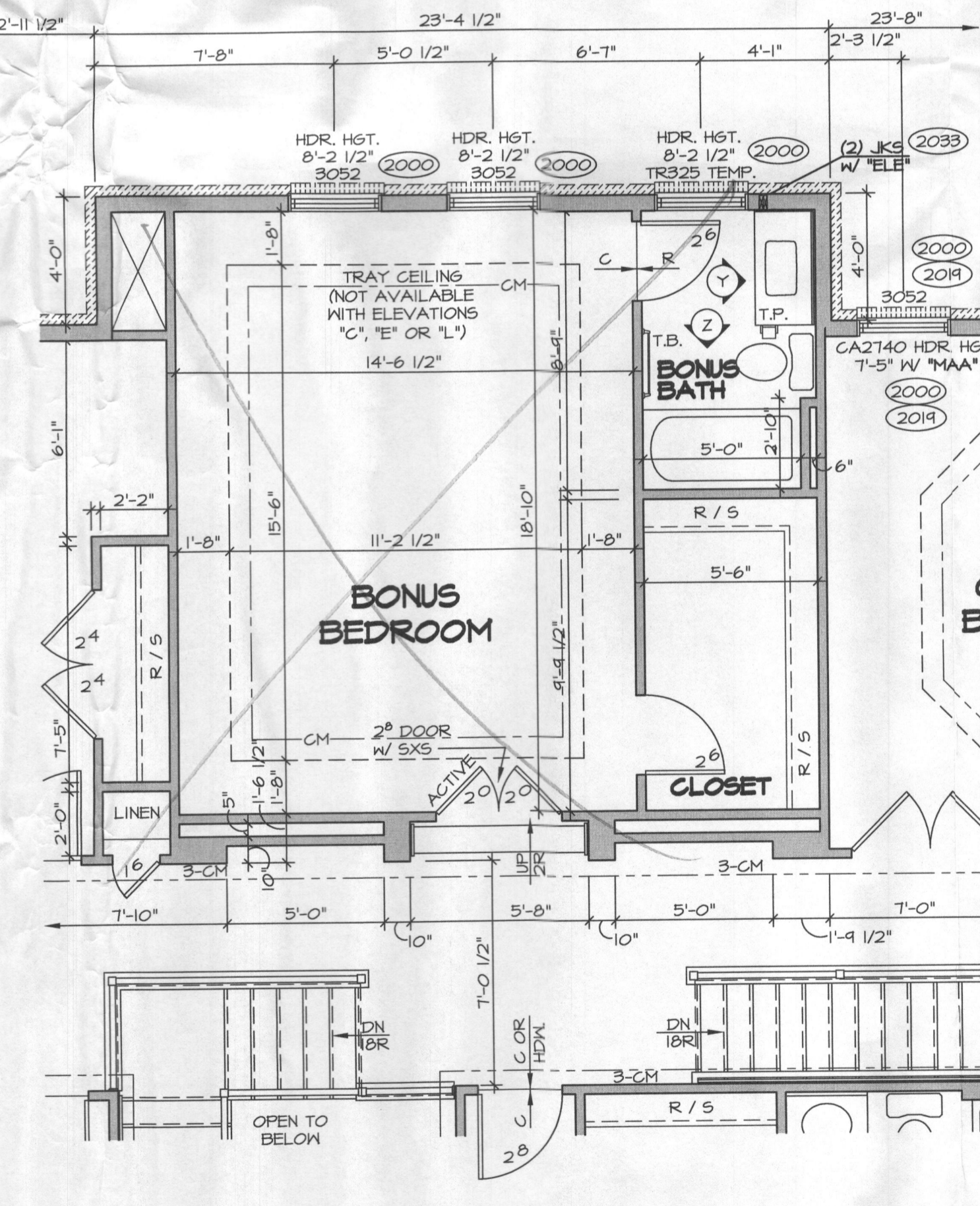
2 SECOND FLOOR PLAN PARTIAL
 SCALE: 1/4" = 1'-0"
 BONUS ROOM "MAV" NO EXTENSION



3 SECOND FLOOR PLAN PARTIAL
 SCALE: 1/4" = 1'-0"
 BONUS BEDROOM "BVV" NO EXTENSION



4 SECOND FLOOR PLAN PARTIAL
 SCALE: 1/4" = 1'-0"
 BONUS ROOM "MAV" W/ 4'-0" EXTENSION TO FAMILY ROOM "EEN"



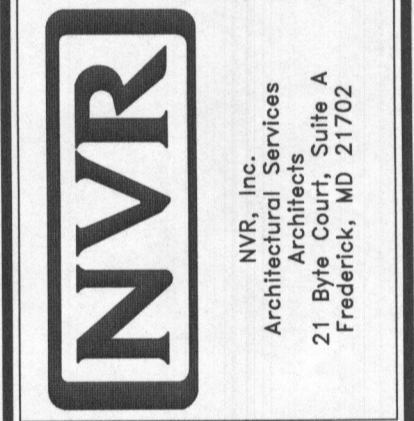
5 SECOND FLOOR PLAN PARTIAL
 SCALE: 1/4" = 1'-0"
 BONUS BEDROOM "BVV" W/ 4'-0" EXTENSION TO FAMILY ROOM "EEN"

- NOTES:**
- ALL HEADERS ARE (3) 2x6, UNLESS OTHERWISE NOTED.
 - ALL EXTERIOR WALLS ARE 6" UNLESS OTHERWISE NOTED.
 - ALL INTERIOR WALLS ARE 3 1/2" UNLESS OTHERWISE NOTED.
 - HATCHED AREAS INDICATE DROPPED CEILING.
 - ALL CASED OPENINGS AT 7'-11", UNLESS OTHERWISE NOTED.
 - WASHER ALWAYS ON THE LEFT PER PLAN OR REVERSE PLAN (WHERE APPLICABLE).
 - JACKS MUST EXTEND THROUGH TOP PLATES OF WALL TO BEAR DIRECTLY ON BOTTOM CHORD OF GIRDER TRUSS AT LOCATIONS NOTED.

NOTE:
 SEE SHEET 5-5 FOR BRACED WALL PANEL LOCATIONS

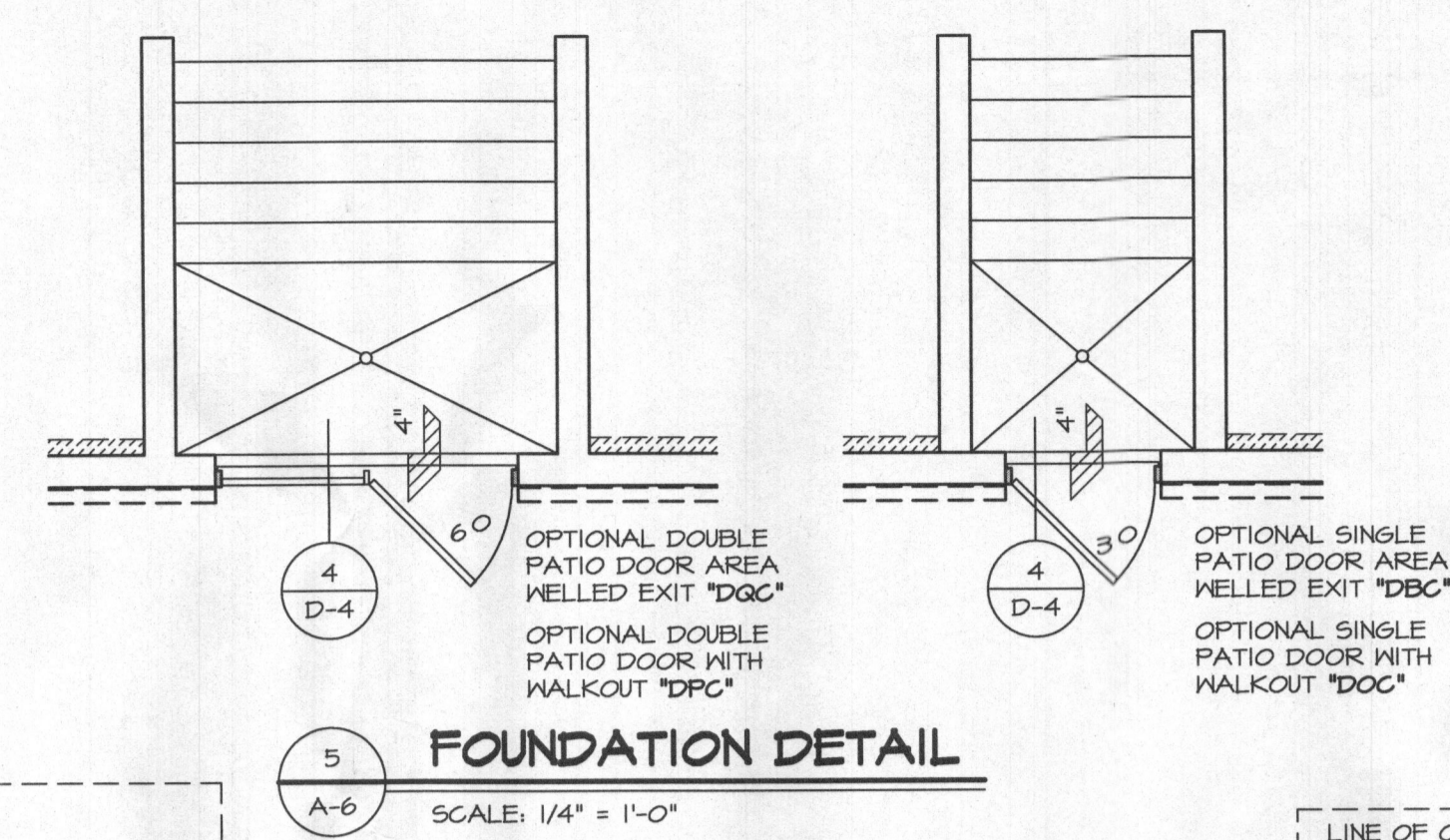
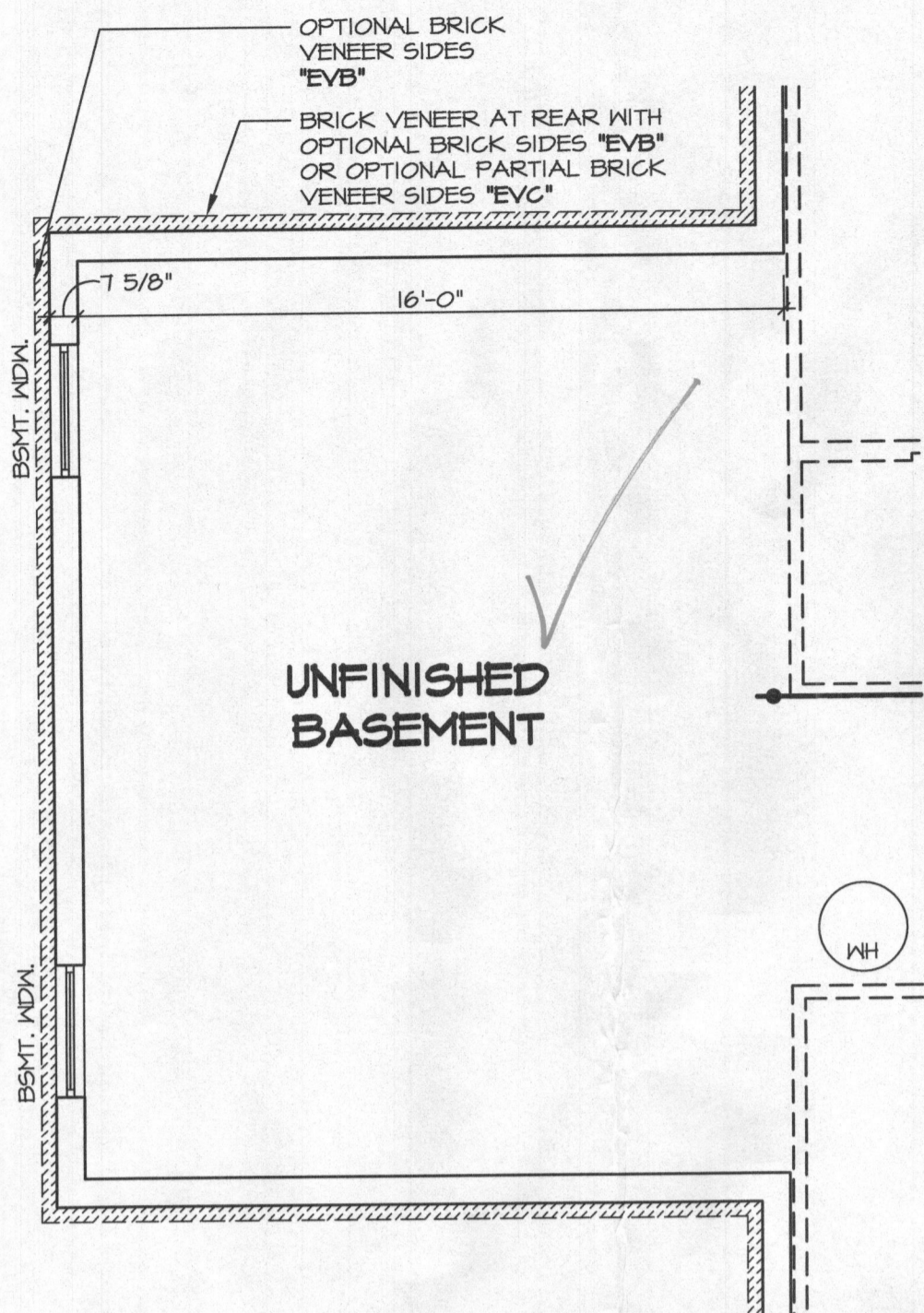
REV. NO.	DATE	REMARKS
1	2/20/11	KAD - PROJECT #1055 - ADDED COUNTERTOP LAYOUT FOR OWNER'S BATH
2	8/20/11	CHB - REMOVED STUD SPACING NOTES FROM "BVV" AND "MAV" (PAR 4.7) (6/2)
3	1/23/14	BEB - RIV/S/0016 TRAP
4	2/19/14	CL5 - ADJUST ELEVATION "L"
5	4/21/14	TE5 - ADJUST TUB CONVERSIONS
6	5/14/14	ZM4 - REVISED OWNER'S ENTRY DOOR SIZE - PAR #23516
7	5/29/14	DIAS - ADJUST REVISIONS
8	7/16/14	BEB - ADJUSTED LINEN CLOSET WIDTH (PAR 25124)
9	10/16/14	LER - SHORTENED REAR STAIRS (7' TO 6'8") (PAR #29151)

NVR, Inc. hereby expressly reserves all copyright and other property rights in these plans. These plans are not to be reproduced, changed, or copied in any form or manner whatsoever, without the prior written consent of NVR, Inc.

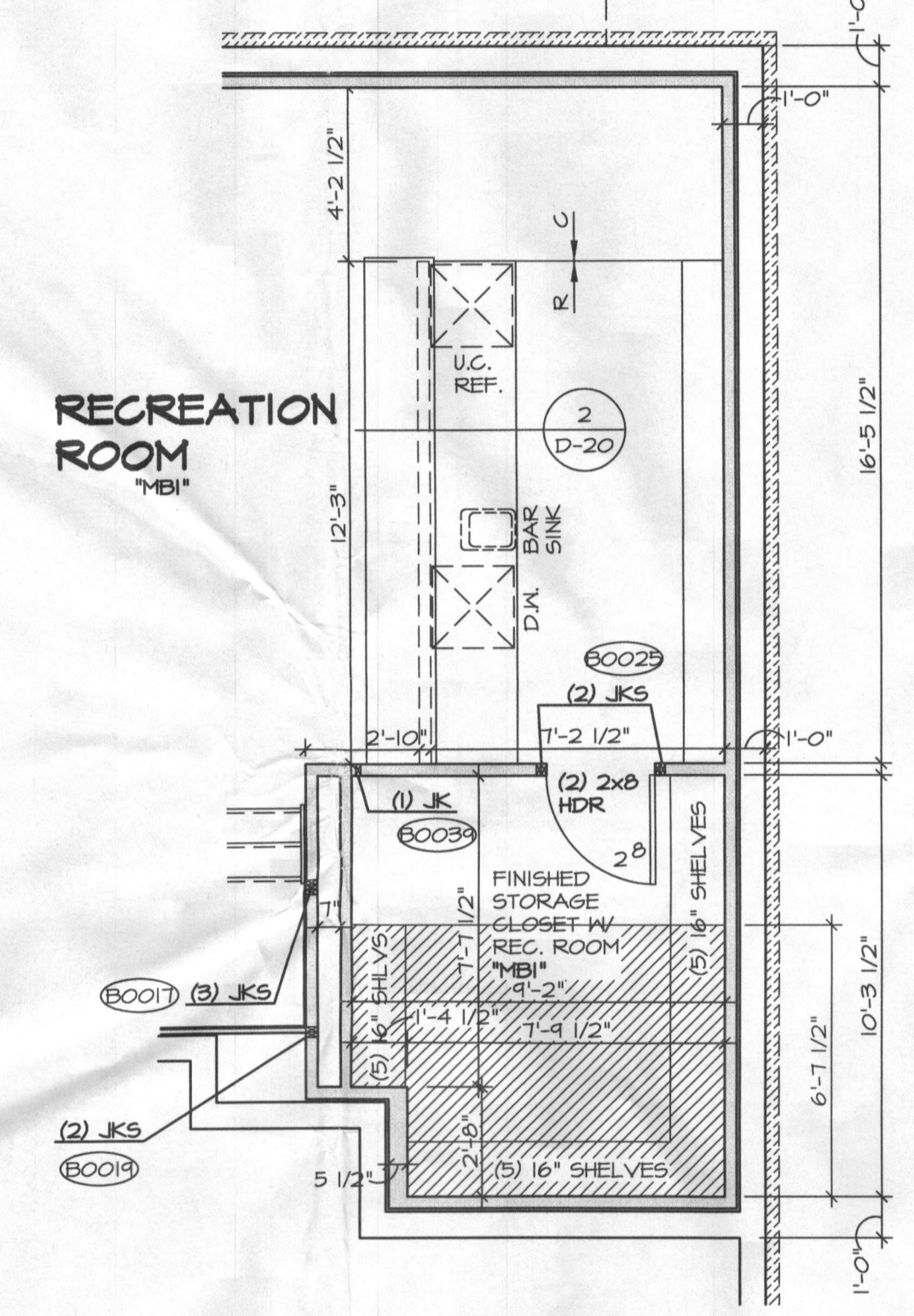
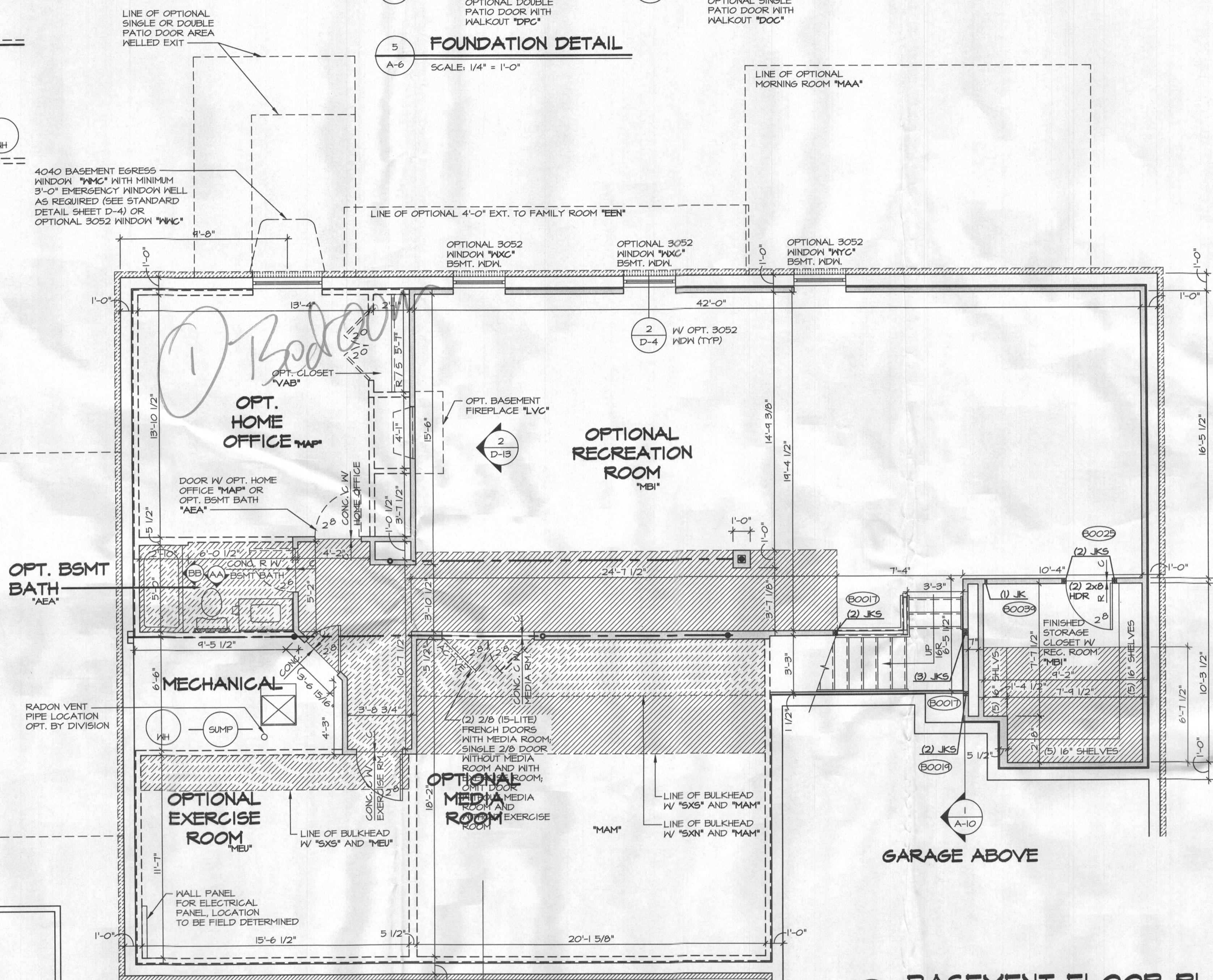


SET NO. 10200	VERSION 01
DRAWN BY JEA	DATE: 3/14/13
OPTION BEE	BEDROOM #5
OPTION MAY, BVV	BONUS ROOM, BONUS BEDROOM
OPTION EEN	4'-0" EXTENSION TO FAMILY ROOM

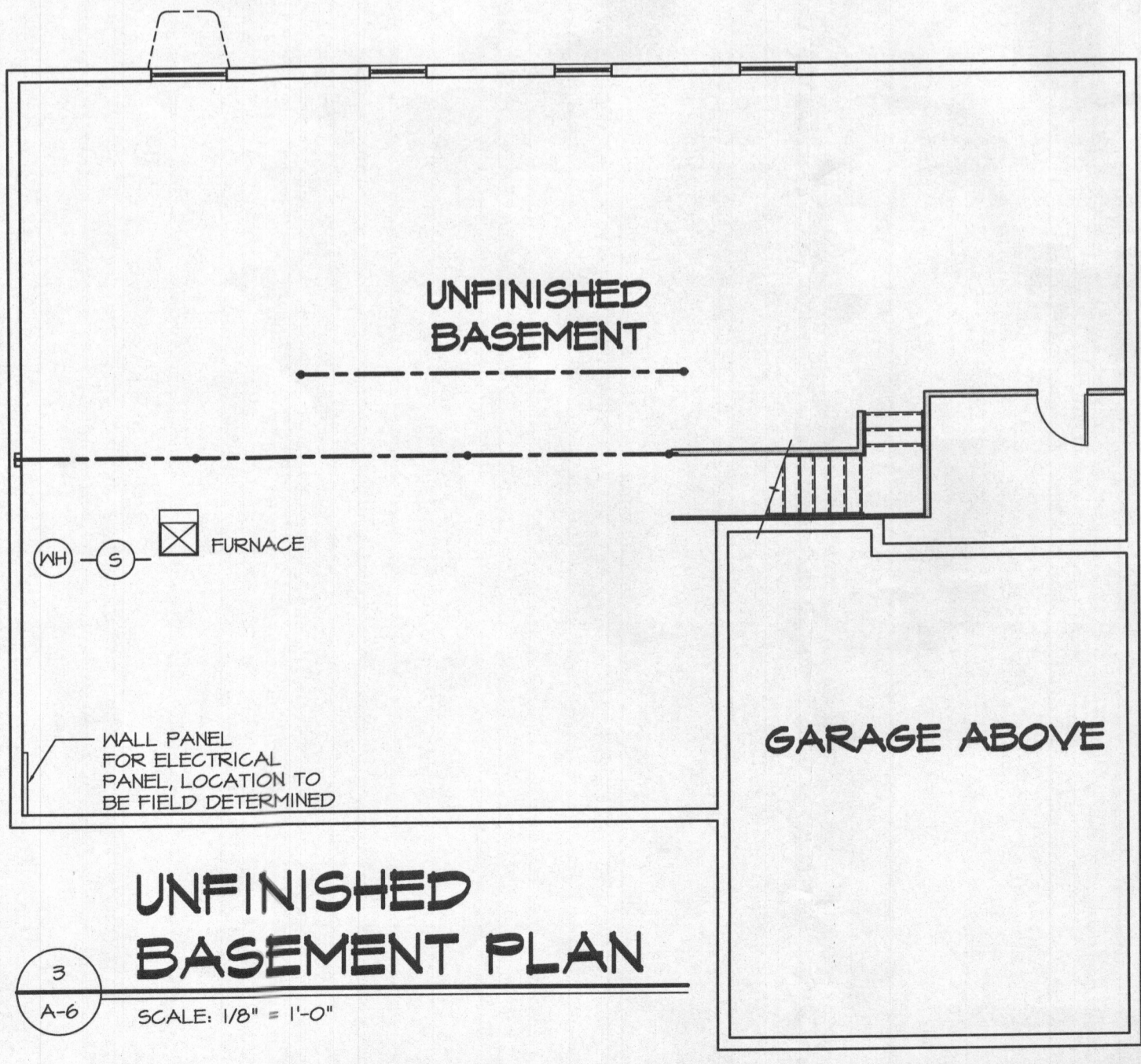
SHEET NO. A-8d	MODEL REGENT'S PARK II
50	DRAWING TITLE SECOND FLOOR PLAN PARTIAL
	OPTION BEDROOM #5
	BONUS ROOM, BONUS BEDROOM
	4'-0" EXTENSION TO FAMILY ROOM



2
A-6
BASEMENT FLOOR PLAN PARTIAL
SCALE: 1/4" = 1'-0"
CONSERVATORY "MCO" / FIRST FLOOR SUITE "MFR"



4
A-6
BASEMENT FLOOR PLAN PARTIAL
SCALE: 1/4" = 1'-0"
OPT. NET BAR "VAZ"



1
A-6
BASEMENT FLOOR PLAN
SCALE: 1/4" = 1'-0"

WITH OPTION "SG1" - DRYWALL UNFINISHED BASEMENT CEILING AREA
NOTES:
• 1/2" GYPSUM WALL BOARD REQUIRED ON CEILING IN UNFINISHED AREAS WHEN NO SPRINKLER SYSTEM IS INSTALLED
• A MAXIMUM AREA OF 80 SQ FT MAY BE OMITTED AS NEEDED FOR INSTALLATION OF PLUMBING, ELECTRICAL, AND/OR HVAC (TYPICALLY AN 8'-0"x8'-0" CEILING SPACE ABOVE MECHANICAL AREA)
• PROVIDE FIRE BLOCKING AS REQUIRED AT PERIMETER OF ANY AREAS WHERE DRYWALL HAS BEEN OMITTED.

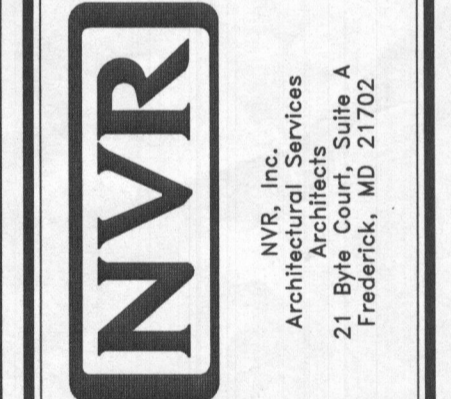
- NOTES:
1. ALL HEADERS ARE (3) 2x6, UNLESS OTHERWISE NOTED.
2. ALL EXTERIOR WALLS ARE 6" UNLESS OTHERWISE NOTED.
3. ALL INTERIOR WALLS ARE 3 1/2" UNLESS OTHERWISE NOTED.
4. HATCHED AREAS INDICATE DROPPED CEILING.
5. ALL GATED OPENINGS AT 1'-11", UNLESS OTHERWISE NOTED.
6. WASHER ALWAYS ON THE LEFT PER PLAN OR REVERSE PLAN (WHERE APPLICABLE).

NOTE:
SEE SHEET S-5 FOR BRACED WALL PANEL LOCATIONS

1 Bedroom in Basement

REV. NO.	DATE	REMARKS
10	2/24/15	GL5 - ADDED NOTE FOR "SG1" OPTION (PAR ID 3117)
11	4/22/15	MBT - RELOCATED THE NET BAR (PAR ID: 32442)
12	9/1/15	DPB - AUDIT REVISION ADD "MAA" LINE
13	9/14/15	SB5 - PAR #9504 - REVISED "MMP" DOOR LOCATION FOR TRIM
14	11/1/15	AK5 - MECHANICAL DOOR STD. CLARIFIED MEDIA ROOM DOOR NOTE (PAR 3619)
15	11/21/16	SB5 - PAR #42410 - REVISED WALLS / PANELS TO MATCH FOR UNFINISHED STAIR
16	5/6/17	KAD - ADDED SQUARE BOYL VANITIES (PAR #45914)
17	11/7/14	CEL - ADIT - ADDED NOTE TO HOME OFFICE DOOR
18	11/6/15	BEB - ADDED BUILT DOWN CEILING IN STORAGE CLOSET FOR HVAC (PAR 30166)

NVR, Inc. owner, expressly reserves its common law copyright and other property rights in these plans. These plans are not to be copied, reproduced, or otherwise used in any way without the prior written consent of NVR, Inc.



SET NO. 10200	VERSION 01	DRAWN BY JEA	DATE: 8/14/15
MODEL REGENTS PARK II			OPTION

SHEET NO. A-6	DRAWING TITLE BASEMENT FLOOR PLAN	OPTION DESCRIPTION
47		