

**GENERAL NOTES:**

1. CONDITIONAL USE AS REQUESTED IN SECTION 131.52.
2. AREA OF PROPERTY: 50.00+/- AC.
3. COMMERCIAL SOLAR OPERATIONAL AREA: 13.85 AC. (13.56 AC. FENCE AREA + 0.09 AC. NEW ACCESS ROAD)
4. TIMONIS GROUP + VOGEL ENGINEERING DEED MOSAIC AS COMPILED BY
5. TOPOGRAPHY SHOWN HEREON FROM HOWARD COUNTY, MD GIS.
6. OLD FREDERICK ROAD (MD ROUTE 99) IS A MAJOR COLLECTOR.
7. PROPERTY ADDRESS: SYKESVILLE, MD DISTRICT
8. PROPERTY IS LOCATED IN THE 3RD ELECTION DISTRICT.
9. THE SUBJECT PROPERTY IS ZONED RC-DEO.
10. ADJACENT PROPERTY LINES AND THE ULTIMATE RIGHT OF WAY LINE 50' BARRIERS (SEE 20' IN HEIGHT).
11. A TYPE 'D' BUFFER 20' IN HEIGHT.
12. OF THE CONDITIONAL USE AREA, UNLESS THE PERMITTER REQUESTS OTHERWISE, THE HEARING AUTHORITY SHALL PROVIDE A SECURITY FENCING IS PROVIDED BETWEEN THE LANDSCAPING AND SOLAR FACILITY.
13. A TYPE 'D' BUFFER 20' IN HEIGHT.
14. A TYPE 'D' BUFFER 20' IN HEIGHT.
15. A TYPE 'D' BUFFER 20' IN HEIGHT.
16. A TYPE 'D' BUFFER 20' IN HEIGHT.
17. A TYPE 'D' BUFFER 20' IN HEIGHT.

**NOTES:**

1. MAKE SURE TO BE WOVEN WIRE FABRIC INSTALLED AT A MINIMUM OF 10' ABOVE THE GROUND.
2. TYPE 'D' BUFFER TREES SHALL CONSIST OF A DOUBLE ROW OF OFFSET EVERGREEN TREES PLANTED AT INTERVALS OF 10' ON EITHER SIDE OF THE BUFFER. ROWS OFFSET 15'.
3. EVERGREEN TREE SPECIES MAY INCLUDE:
  - a. CYPRIPRESS, OXYRIPARIS LEYLANDI/LEYLAND CYPRESS (5'-6' HGT.)
  - b. TAXODIUM DISTICHUM (6'-8' HGT.)
  - c. PINUS STROBILIFERA (6'-8' HGT.)
4. DECIDUOUS TREE SPECIES MAY INCLUDE:
  - a. ACER GINNALA / AMUR MAPLE (2 1/2"-3" CAL.)
  - b. BETULA NIGRA HERITAGE / HERITAGE CLUMP BIRCH (2 1/2"-3" CAL.)
  - c. ACER RUBRUM / OCTOBER GLORY / OCTOBER GLORY RED MAPLE (2 1/2"-3 1/2" CAL.)
5. OTHER SPECIES TO BE APPROVED, MAY BE SUBSTITUTED OR UTILIZED.

**PERIMETER LANDSCAPE EDGE**

CATEGORY	PERIMETER/FRONTAGE DESIGNATION	13.56 AC. FENCE AREA
LINEAR FEET OF FENCE	D	1,394'
CREDIT FOR EXISTING VEGETATION (YES: NO. LINEAR FEET; NO: NO. LINEAR FEET)		*0
CREDIT FOR WALL, FENCE OR BERM (YES: NO. LINEAR FEET; NO: NO. LINEAR FEET)		0
NUMBER OF PLANTS REQUIRED		149 00
NUMBER OF PLANTS PROVIDED		362
NUMBER OF PLANTS SHORTAGE		213
OTHER TREES (2:1 SUBSTITUTION) DESCRIBE PLANT SUBSTITUTION CREDITS BELOW IF NEEDED		

**GENERAL NOTES:**

1. CONDITIONAL USE AS REQUESTED IN SECTION 131.52.
2. AREA OF PROPERTY: 50.00+/- AC.
3. COMMERCIAL SOLAR OPERATIONAL AREA: 13.85 AC. (13.56 AC. FENCE AREA + 0.09 AC. NEW ACCESS ROAD)
4. TIMONIS GROUP + VOGEL ENGINEERING DEED MOSAIC AS COMPILED BY
5. TOPOGRAPHY SHOWN HEREON FROM HOWARD COUNTY, MD GIS.
6. OLD FREDERICK ROAD (MD ROUTE 99) IS A MAJOR COLLECTOR.
7. PROPERTY ADDRESS: SYKESVILLE, MD DISTRICT
8. PROPERTY IS LOCATED IN THE 3RD ELECTION DISTRICT.
9. THE SUBJECT PROPERTY IS ZONED RC-DEO.
10. ADJACENT PROPERTY LINES AND THE ULTIMATE RIGHT OF WAY LINE 50' BARRIERS (SEE 20' IN HEIGHT).
11. A TYPE 'D' BUFFER 20' IN HEIGHT.
12. OF THE CONDITIONAL USE AREA, UNLESS THE PERMITTER REQUESTS OTHERWISE, THE HEARING AUTHORITY SHALL PROVIDE A SECURITY FENCING IS PROVIDED BETWEEN THE LANDSCAPING AND SOLAR FACILITY.
13. A TYPE 'D' BUFFER 20' IN HEIGHT.
14. A TYPE 'D' BUFFER 20' IN HEIGHT.
15. A TYPE 'D' BUFFER 20' IN HEIGHT.
16. A TYPE 'D' BUFFER 20' IN HEIGHT.
17. A TYPE 'D' BUFFER 20' IN HEIGHT.

**NOTES:**

1. STRUCTURAL DESIGN TO BE PROVIDED BY FENCE SUPPLIER. SEE SUPPLIER DRAWING FOR ADDITIONAL DETAILS.
2. ALL POSTS SHALL BE TREATED WOOD.
3. ALL METALLIC PARTS SHALL BE GALVANIZED.

**TRACKER CROSS SECTION**  
NOT TO SCALE

**SECURITY FENCE DETAIL**  
NOT TO SCALE

**MODULE DETAIL**  
NOT TO SCALE

**STRING INVERTER DETAIL**  
NOT TO SCALE

**INVERTER / XFMR STATION DETAIL**  
NOT TO SCALE

**84 MODULE (3 STRING) TRACKER**  
NOT TO SCALE

**56 MODULE (2 STRING) TRACKER**  
NOT TO SCALE

**STRING INVERTER DETAIL**  
NOT TO SCALE

**MODULE DETAIL**  
NOT TO SCALE

**INVERTER / XFMR STATION DETAIL**  
NOT TO SCALE

**84 MODULE (3 STRING) TRACKER**  
NOT TO SCALE

**56 MODULE (2 STRING) TRACKER**  
NOT TO SCALE

**TYPE 'D' BUFFER PLANTING PATTERN DETAIL**  
NOT TO SCALE

**TRACKER CROSS SECTION**  
NOT TO SCALE

**SECURITY FENCE DETAIL**  
NOT TO SCALE

**MODULE DETAIL**  
NOT TO SCALE

**STRING INVERTER DETAIL**  
NOT TO SCALE

**INVERTER / XFMR STATION DETAIL**  
NOT TO SCALE

**84 MODULE (3 STRING) TRACKER**  
NOT TO SCALE

**56 MODULE (2 STRING) TRACKER**  
NOT TO SCALE

**TYPE 'D' BUFFER PLANTING PATTERN DETAIL**  
NOT TO SCALE

**TRACKER CROSS SECTION**  
NOT TO SCALE

**SECURITY FENCE DETAIL**  
NOT TO SCALE

**MODULE DETAIL**  
NOT TO SCALE

**STRING INVERTER DETAIL**  
NOT TO SCALE

**INVERTER / XFMR STATION DETAIL**  
NOT TO SCALE

**84 MODULE (3 STRING) TRACKER**  
NOT TO SCALE

**56 MODULE (2 STRING) TRACKER**  
NOT TO SCALE

**TYPE 'D' BUFFER PLANTING PATTERN DETAIL**  
NOT TO SCALE

**TRACKER CROSS SECTION**  
NOT TO SCALE

**SECURITY FENCE DETAIL**  
NOT TO SCALE

**MODULE DETAIL**  
NOT TO SCALE

**STRING INVERTER DETAIL**  
NOT TO SCALE

**INVERTER / XFMR STATION DETAIL**  
NOT TO SCALE

**84 MODULE (3 STRING) TRACKER**  
NOT TO SCALE

**56 MODULE (2 STRING) TRACKER**  
NOT TO SCALE

**TYPE 'D' BUFFER PLANTING PATTERN DETAIL**  
NOT TO SCALE

**TRACKER CROSS SECTION**  
NOT TO SCALE

**SECURITY FENCE DETAIL**  
NOT TO SCALE

**MODULE DETAIL**  
NOT TO SCALE

**STRING INVERTER DETAIL**  
NOT TO SCALE

**INVERTER / XFMR STATION DETAIL**  
NOT TO SCALE

**84 MODULE (3 STRING) TRACKER**  
NOT TO SCALE

**56 MODULE (2 STRING) TRACKER**  
NOT TO SCALE

**TYPE 'D' BUFFER PLANTING PATTERN DETAIL**  
NOT TO SCALE

**TRACKER CROSS SECTION**  
NOT TO SCALE

**SECURITY FENCE DETAIL**  
NOT TO SCALE

**MODULE DETAIL**  
NOT TO SCALE

**STRING INVERTER DETAIL**  
NOT TO SCALE

**INVERTER / XFMR STATION DETAIL**  
NOT TO SCALE

**84 MODULE (3 STRING) TRACKER**  
NOT TO SCALE

**56 MODULE (2 STRING) TRACKER**  
NOT TO SCALE

**TYPE 'D' BUFFER PLANTING PATTERN DETAIL**  
NOT TO SCALE

**TRACKER CROSS SECTION**  
NOT TO SCALE

**SECURITY FENCE DETAIL**  
NOT TO SCALE

**MODULE DETAIL**  
NOT TO SCALE

**STRING INVERTER DETAIL**  
NOT TO SCALE

**INVERTER / XFMR STATION DETAIL**  
NOT TO SCALE

**84 MODULE (3 STRING) TRACKER**  
NOT TO SCALE

**56 MODULE (2 STRING) TRACKER**  
NOT TO SCALE

**TYPE 'D' BUFFER PLANTING PATTERN DETAIL**  
NOT TO SCALE

**TRACKER CROSS SECTION**  
NOT TO SCALE

**SECURITY FENCE DETAIL**  
NOT TO SCALE

**MODULE DETAIL**  
NOT TO SCALE

**STRING INVERTER DETAIL**  
NOT TO SCALE

**INVERTER / XFMR STATION DETAIL**  
NOT TO SCALE

**84 MODULE (3 STRING) TRACKER**  
NOT TO SCALE

**56 MODULE (2 STRING) TRACKER**  
NOT TO SCALE

**TYPE 'D' BUFFER PLANTING PATTERN DETAIL**  
NOT TO SCALE

**TRACKER CROSS SECTION**  
NOT TO SCALE

**SECURITY FENCE DETAIL**  
NOT TO SCALE

**MODULE DETAIL**  
NOT TO SCALE

**STRING INVERTER DETAIL**  
NOT TO SCALE

**INVERTER / XFMR STATION DETAIL**  
NOT TO SCALE

**84 MODULE (3 STRING) TRACKER**  
NOT TO SCALE

**56 MODULE (2 STRING) TRACKER**  
NOT TO SCALE

**TYPE 'D' BUFFER PLANTING PATTERN DETAIL**  
NOT TO SCALE

**TRACKER CROSS SECTION**  
NOT TO SCALE

**SECURITY FENCE DETAIL**  
NOT TO SCALE

**MODULE DETAIL**  
NOT TO SCALE

**STRING INVERTER DETAIL**  
NOT TO SCALE

**INVERTER / XFMR STATION DETAIL**  
NOT TO SCALE

**84 MODULE (3 STRING) TRACKER**  
NOT TO SCALE

**56 MODULE (2 STRING) TRACKER**  
NOT TO SCALE

**TYPE 'D' BUFFER PLANTING PATTERN DETAIL**  
NOT TO SCALE

**TRACKER CROSS SECTION**  
NOT TO SCALE

**SECURITY FENCE DETAIL**  
NOT TO SCALE

**MODULE DETAIL**  
NOT TO SCALE

**STRING INVERTER DETAIL**  
NOT TO SCALE

**INVERTER / XFMR STATION DETAIL**  
NOT TO SCALE

**84 MODULE (3 STRING) TRACKER**  
NOT TO SCALE

**56 MODULE (2 STRING) TRACKER**  
NOT TO SCALE

**TYPE 'D' BUFFER PLANTING PATTERN DETAIL**  
NOT TO SCALE

**TRACKER CROSS SECTION**  
NOT TO SCALE

**SECURITY FENCE DETAIL**  
NOT TO SCALE

**MODULE DETAIL**  
NOT TO SCALE

**STRING INVERTER DETAIL**  
NOT TO SCALE

**INVERTER / XFMR STATION DETAIL**  
NOT TO SCALE

**84 MODULE (3 STRING) TRACKER**  
NOT TO SCALE

**56 MODULE (2 STRING) TRACKER**  
NOT TO SCALE

**TYPE 'D' BUFFER PLANTING PATTERN DETAIL**  
NOT TO SCALE

**TRACKER CROSS SECTION**  
NOT TO SCALE

**SECURITY FENCE DETAIL**  
NOT TO SCALE

**MODULE DETAIL**  
NOT TO SCALE

**STRING INVERTER DETAIL**  
NOT TO SCALE

**INVERTER / XFMR STATION DETAIL**  
NOT TO SCALE

**84 MODULE (3 STRING) TRACKER**  
NOT TO SCALE

**56 MODULE (2 STRING) TRACKER**  
NOT TO SCALE

**TYPE 'D' BUFFER PLANTING PATTERN DETAIL**  
NOT TO SCALE

**TRACKER CROSS SECTION**  
NOT TO SCALE

**SECURITY FENCE DETAIL**  
NOT TO SCALE

**MODULE DETAIL**  
NOT TO SCALE

**STRING INVERTER DETAIL**  
NOT TO SCALE

**INVERTER / XFMR STATION DETAIL**  
NOT TO SCALE

**84 MODULE (3 STRING) TRACKER**  
NOT TO SCALE

**56 MODULE (2 STRING) TRACKER**  
NOT TO SCALE

**TYPE 'D' BUFFER PLANTING PATTERN DETAIL**  
NOT TO SCALE

**TRACKER CROSS SECTION**  
NOT TO SCALE

**SECURITY FENCE DETAIL**  
NOT TO SCALE

**MODULE DETAIL**  
NOT TO SCALE

**STRING INVERTER DETAIL**  
NOT TO SCALE

**INVERTER / XFMR STATION DETAIL**  
NOT TO SCALE

**84 MODULE (3 STRING) TRACKER**  
NOT TO SCALE

**56 MODULE (2 STRING) TRACKER**  
NOT TO SCALE

**TYPE 'D' BUFFER PLANTING PATTERN DETAIL**  
NOT TO SCALE

**TRACKER CROSS SECTION**  
NOT TO SCALE

**SECURITY FENCE DETAIL**  
NOT TO SCALE

**MODULE DETAIL**  
NOT TO SCALE

**STRING INVERTER DETAIL**  
NOT TO SCALE

**INVERTER / XFMR STATION DETAIL**  
NOT TO SCALE

**84 MODULE (3 STRING) TRACKER**  
NOT TO SCALE

**56 MODULE (2 STRING) TRACKER**  
NOT TO SCALE

**TYPE 'D' BUFFER PLANTING PATTERN DETAIL**  
NOT TO SCALE

**TRACKER CROSS SECTION**  
NOT TO SCALE

**SECURITY FENCE DETAIL**  
NOT TO SCALE

**MODULE DETAIL**  
NOT TO SCALE

**STRING INVERTER DETAIL**  
NOT TO SCALE

**INVERTER / XFMR STATION DETAIL**  
NOT TO SCALE

**84 MODULE (3 STRING) TRACKER**  
NOT TO SCALE

**56 MODULE (2 STRING) TRACKER**  
NOT TO SCALE

**TYPE 'D' BUFFER PLANTING PATTERN DETAIL**  
NOT TO SCALE

**TRACKER CROSS SECTION**  
NOT TO SCALE

**SECURITY FENCE DETAIL**  
NOT TO SCALE

**MODULE DETAIL**  
NOT TO SCALE

**STRING INVERTER DETAIL**  
NOT TO SCALE

**INVERTER / XFMR STATION DETAIL**  
NOT TO SCALE

**84 MODULE (3 STRING) TRACKER**  
NOT TO SCALE

**56 MODULE (2 STRING) TRACKER**  
NOT TO SCALE

**TYPE 'D' BUFFER PLANTING PATTERN DETAIL**  
NOT TO SCALE

**TRACKER CROSS SECTION**  
NOT TO SCALE

**SECURITY FENCE DETAIL**  
NOT TO SCALE

**MODULE DETAIL**  
NOT TO SCALE

**STRING INVERTER DETAIL**  
NOT TO SCALE

**INVERTER / XFMR STATION DETAIL**  
NOT TO SCALE

**84 MODULE (3 STRING) TRACKER**  
NOT TO SCALE

**56 MODULE (2 STRING) TRACKER**  
NOT TO SCALE

**TYPE 'D' BUFFER PLANTING PATTERN DETAIL**  
NOT TO SCALE

**TRACKER CROSS SECTION**  
NOT TO SCALE

**SECURITY FENCE DETAIL**  
NOT TO SCALE

**MODULE DETAIL**  
NOT TO SCALE

**STRING INVERTER DETAIL**  
NOT TO SCALE

**INVERTER / XFMR STATION DETAIL**  
NOT TO SCALE

**84 MODULE (3 STRING) TRACKER**  
NOT TO SCALE

**56 MODULE (2 STRING) TRACKER**  
NOT TO SCALE

**TYPE 'D' BUFFER PLANTING PATTERN DETAIL**  
NOT TO SCALE

**TRACKER CROSS SECTION**  
NOT TO SCALE

**SECURITY FENCE DETAIL**  
NOT TO SCALE

**MODULE DETAIL**  
NOT TO SCALE

**STRING INVERTER DETAIL**  
NOT TO SCALE

**INVERTER / XFMR STATION DETAIL**  
NOT TO SCALE

**84 MODULE (3 STRING) TRACKER**  
NOT TO SCALE

**56 MODULE (2 STRING) TRACKER**  
NOT TO SCALE

**TYPE 'D' BUFFER PLANTING PATTERN DETAIL**  
NOT TO SCALE

**TRACKER CROSS SECTION**  
NOT TO SCALE

**SECURITY FENCE DETAIL**  
NOT TO SCALE

**MODULE DETAIL**  
NOT TO SCALE

**STRING INVERTER DETAIL**  
NOT TO SCALE

**INVERTER / XFMR STATION DETAIL**  
NOT TO SCALE

**84 MODULE (3 STRING) TRACKER**  
NOT TO SCALE

**56 MODULE (2 STRING) TRACKER**  
NOT TO SCALE

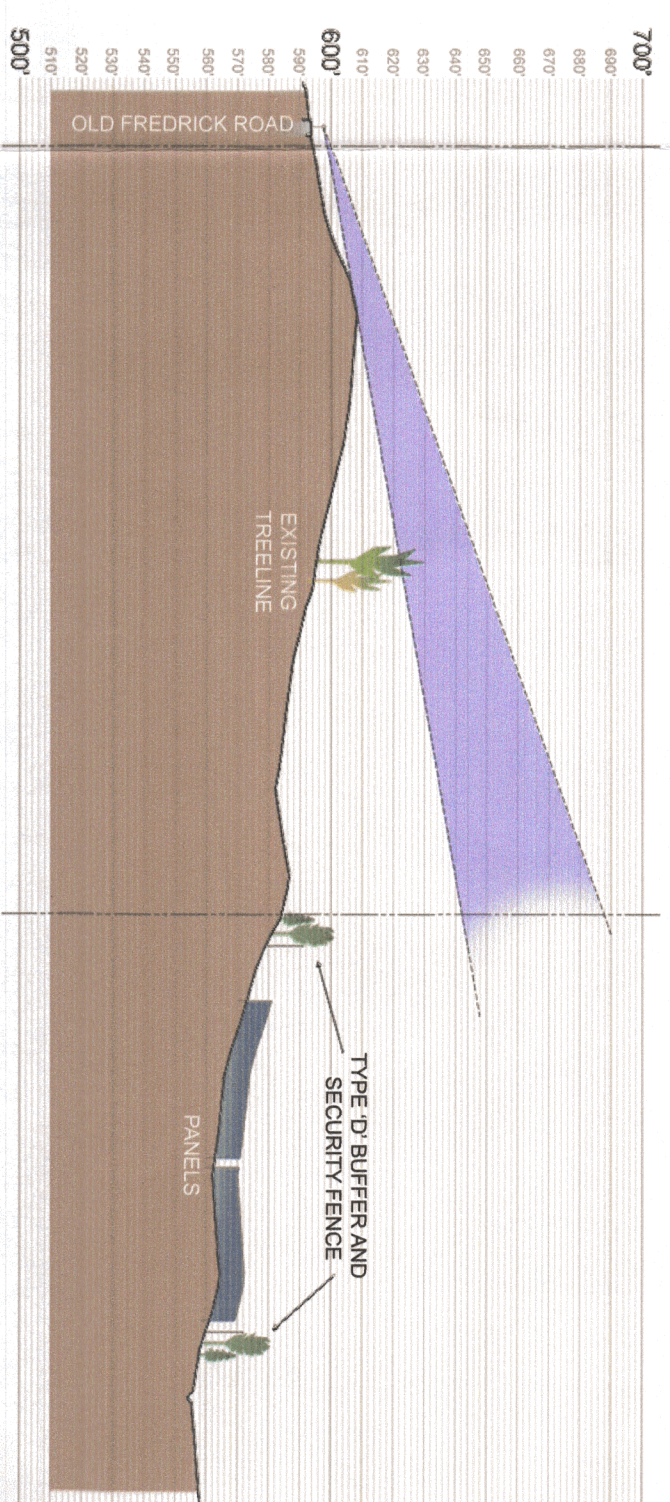
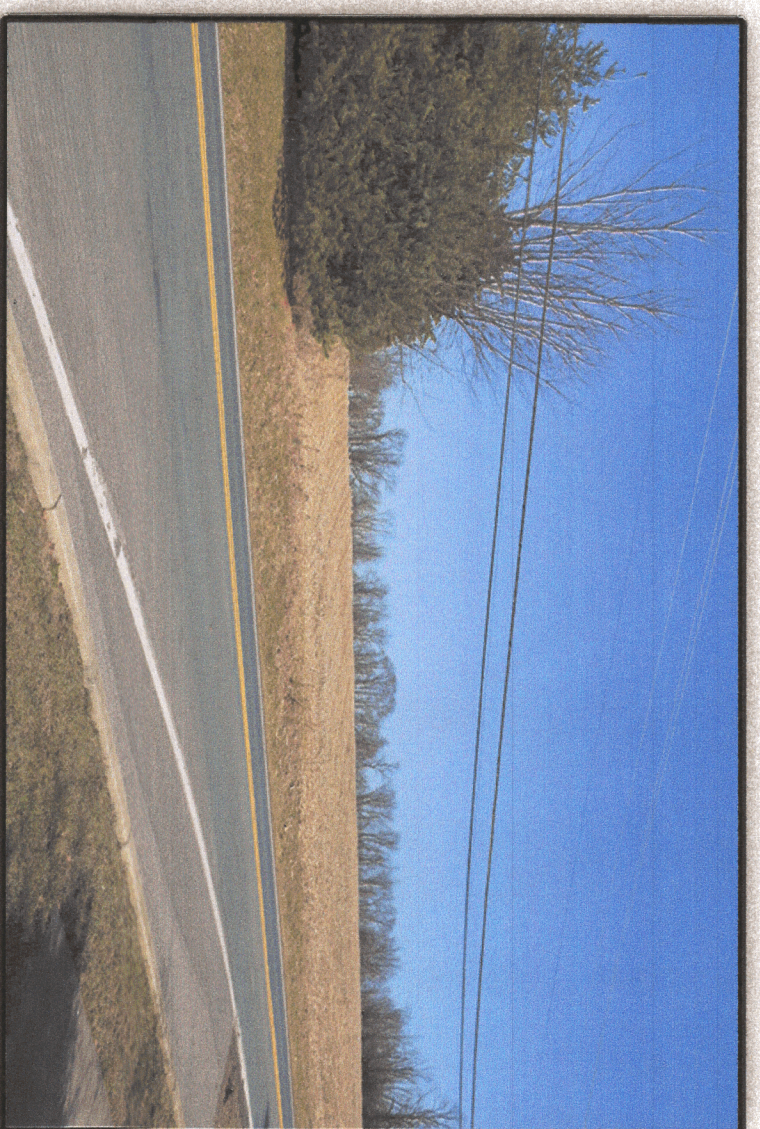
**TYPE 'D' BUFFER PLANTING PATTERN DETAIL**  
NOT TO SCALE

**TRACKER CROSS SECTION**  
NOT TO SCALE

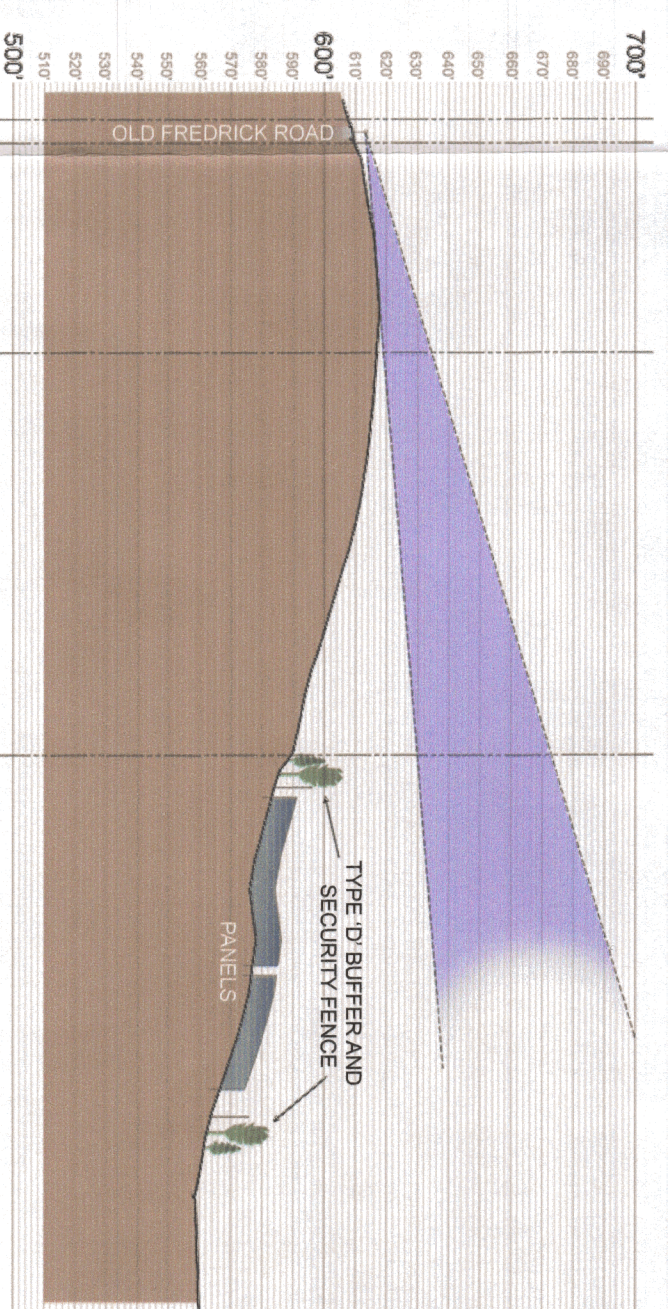
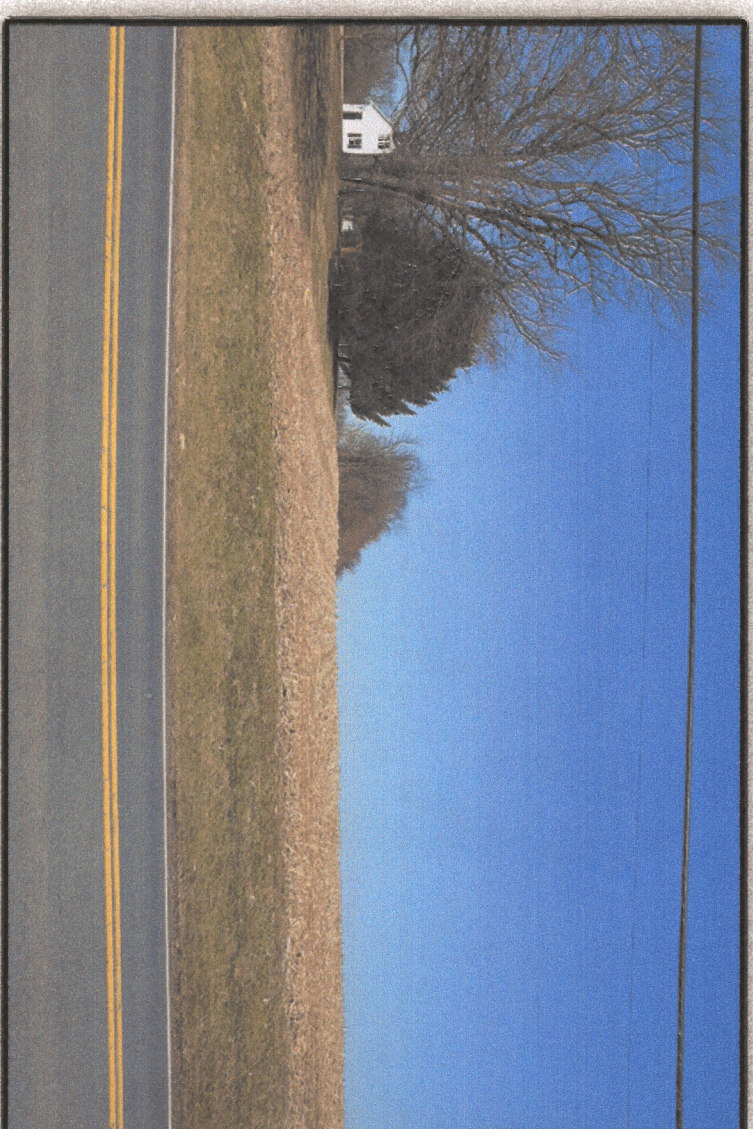
**SECURITY FENCE DETAIL**  
NOT TO SCALE

**MODULE DETAIL**  
NOT TO SCALE

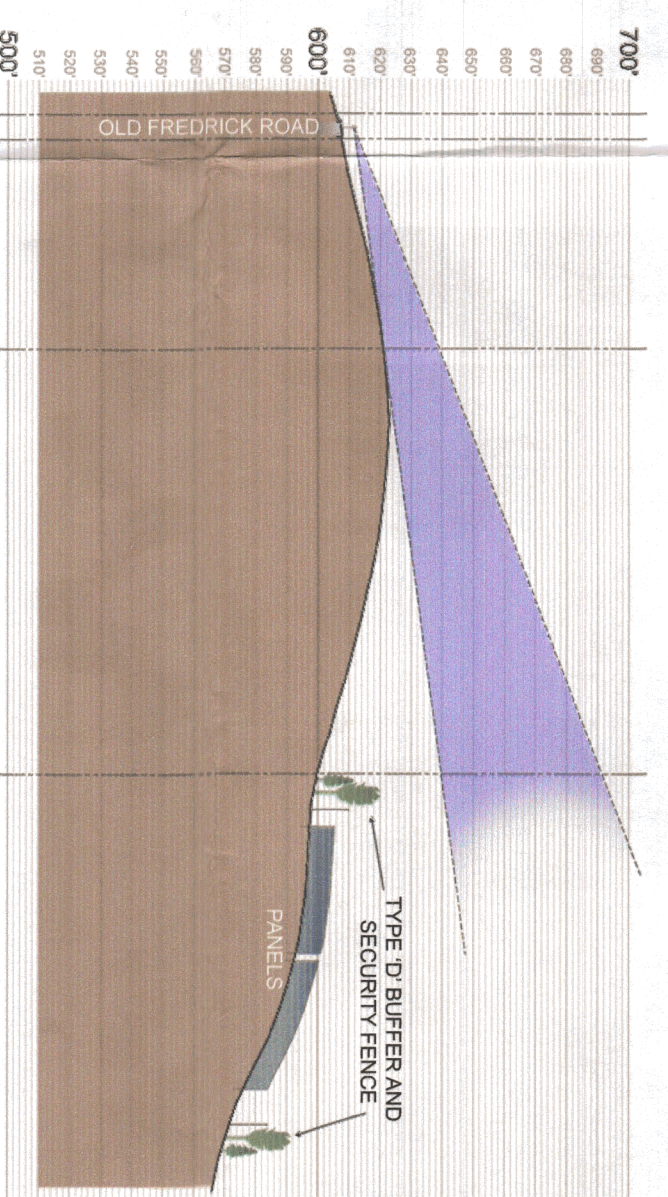
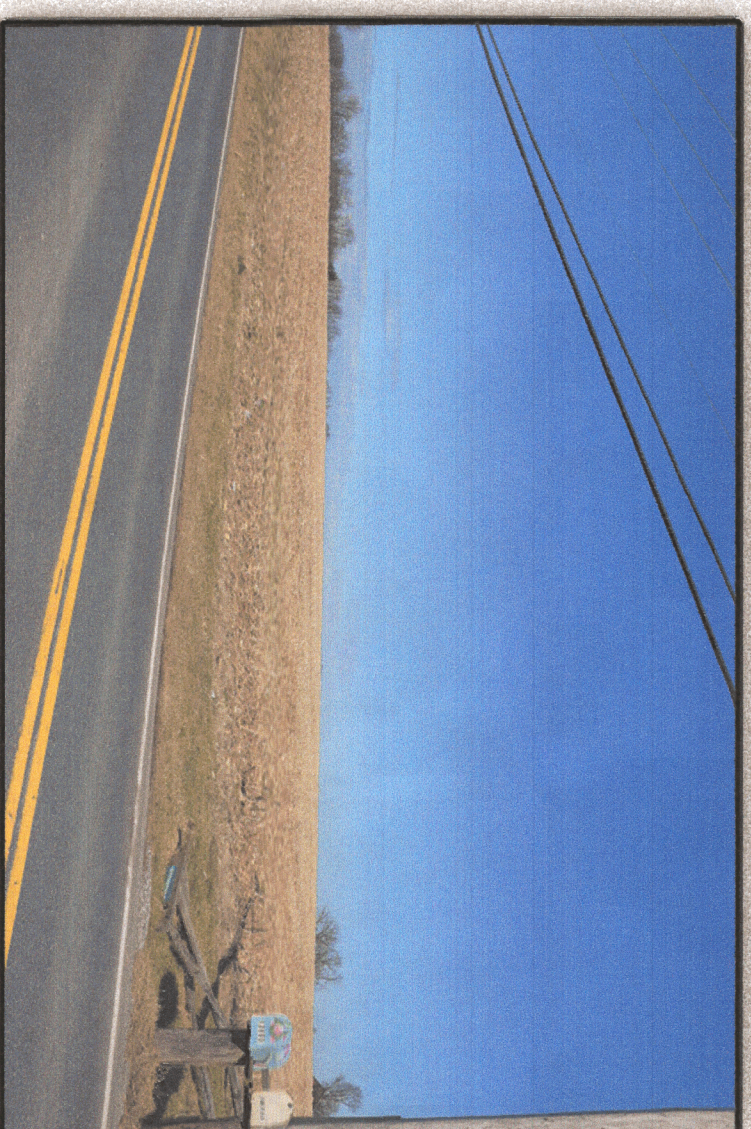
**STRING INVERTER DETAIL**  
NOT TO SCALE



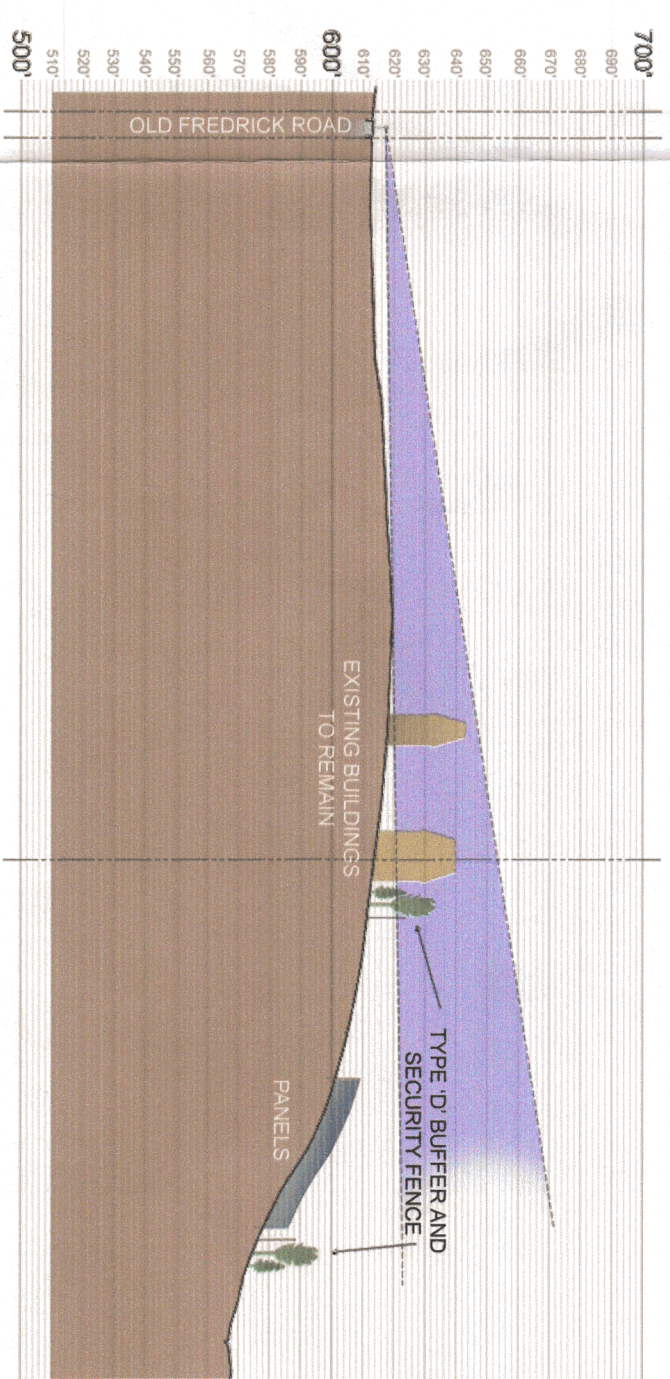
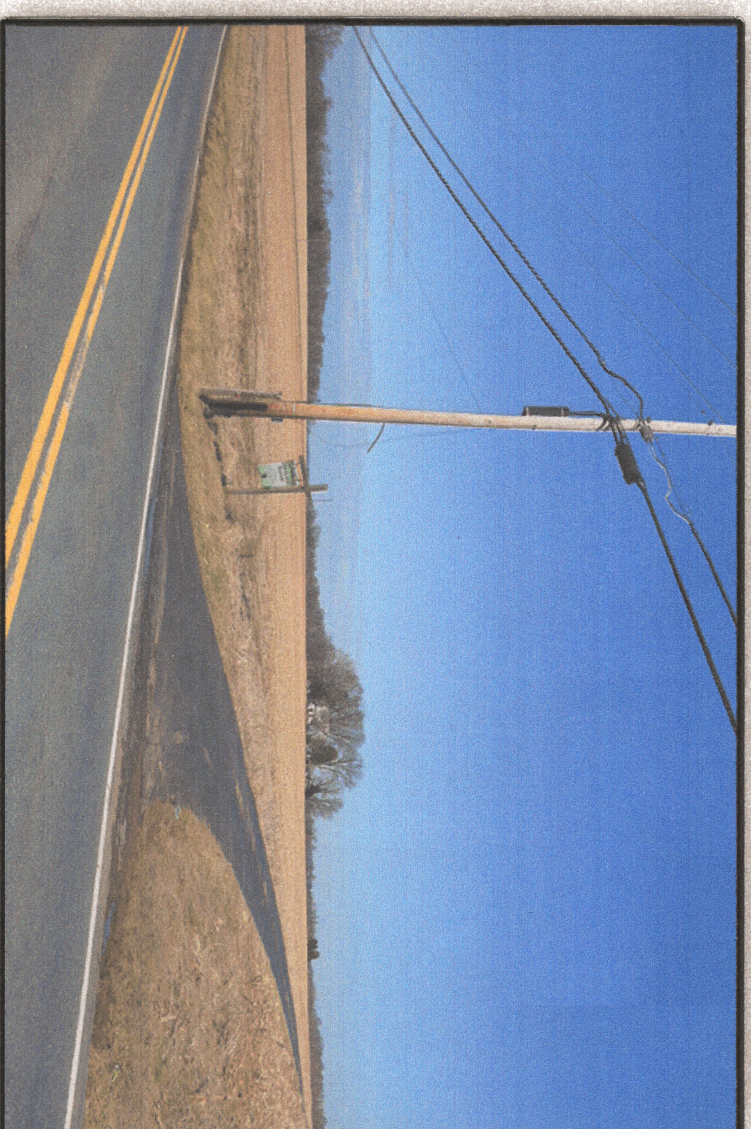
Section 1



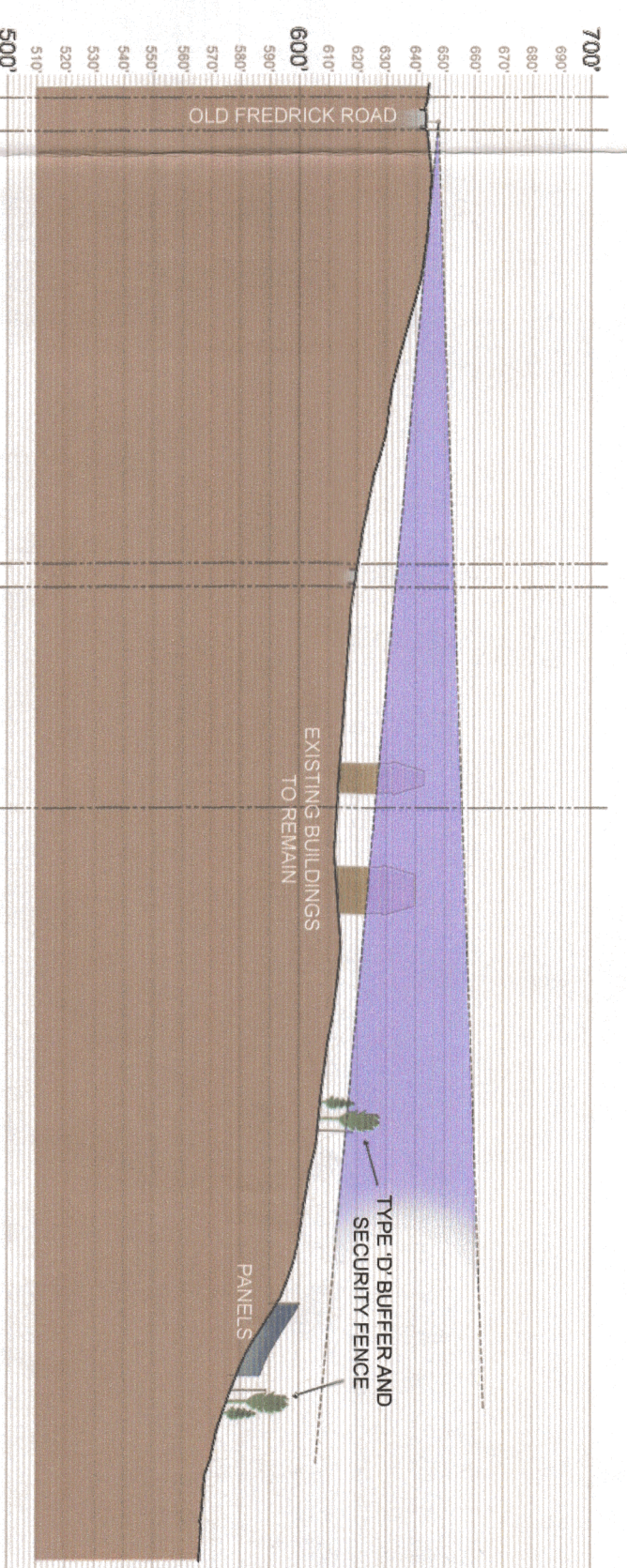
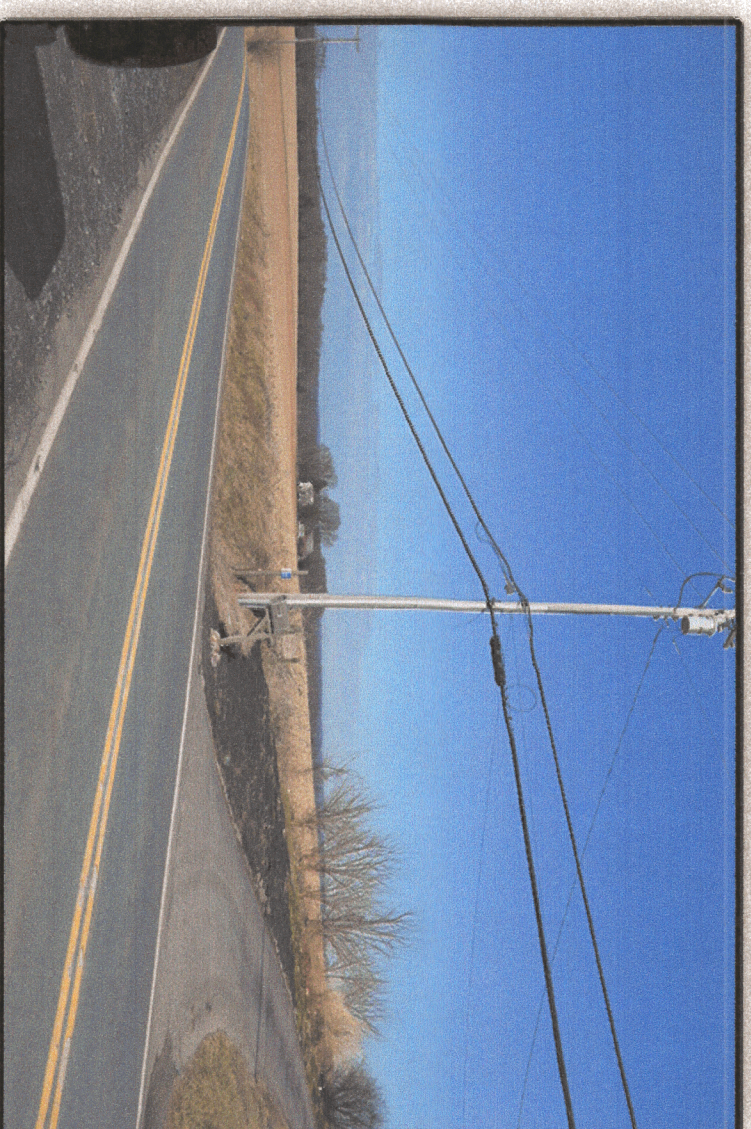
Section 2



Section 3

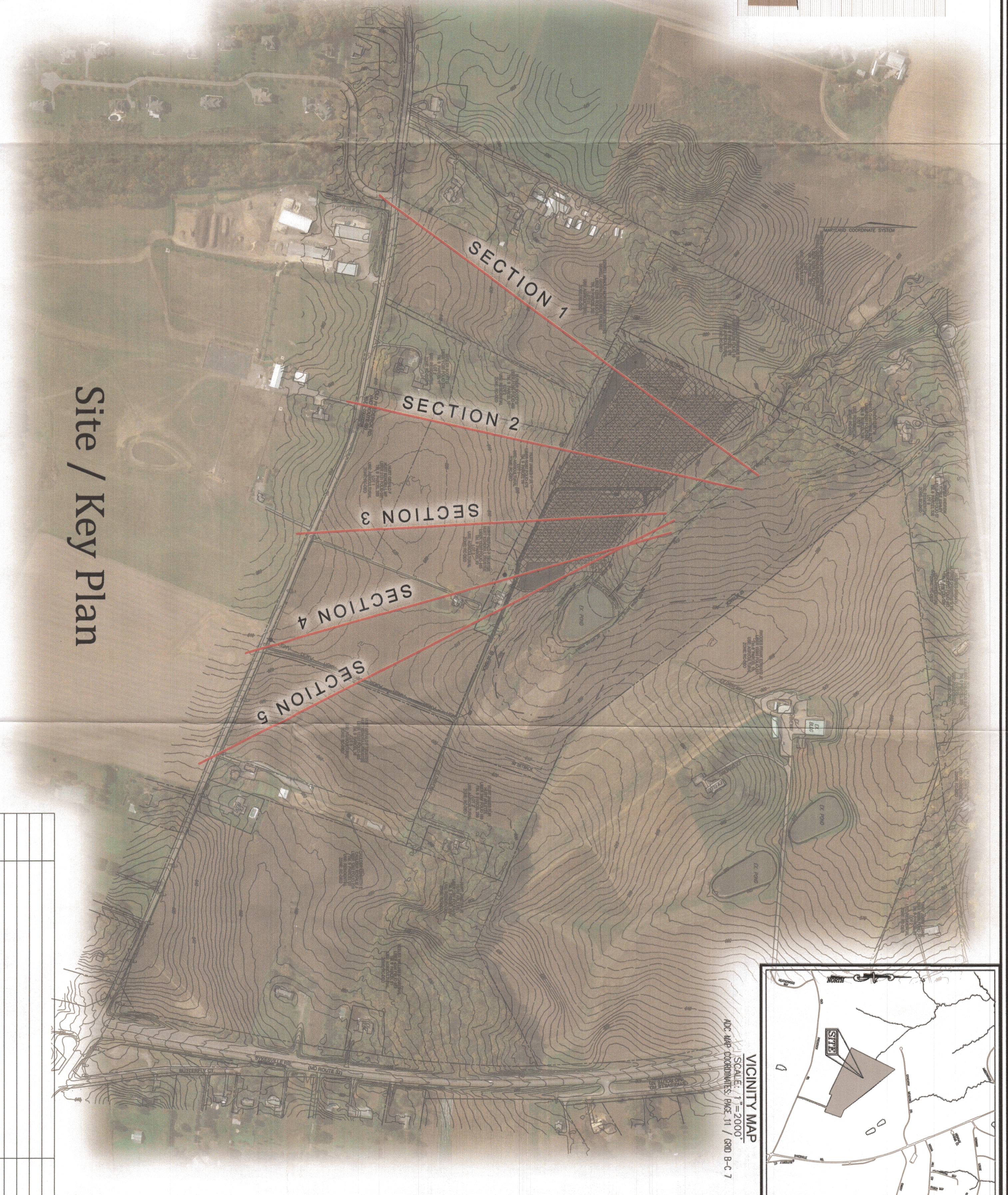


Section 4

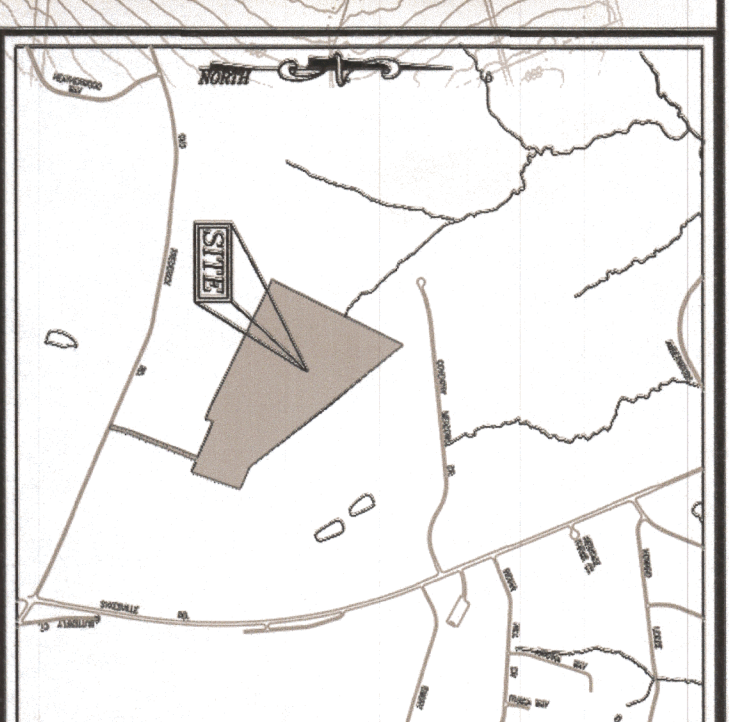


Section 5

Site sections are shown at 5:1 scale.



Site / Key Plan



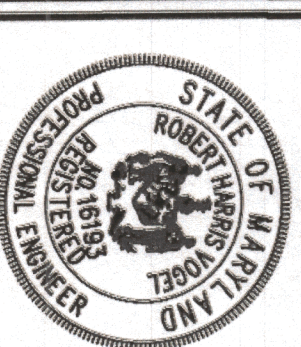
VICINITY MAP  
SCALE: 1" = 2000'  
NAD 83 COORDINATES: POC: 11 / 980 B-4-7

SECTIONS 1, 2, AND 3: THE SITE, INCLUDING PERIMETER FENCE AND LANDSCAPING, IS FULLY BLOCKED FROM VIEW BY EXISTING TOPOGRAPHY.  
SECTIONS 4 AND 5: VIEWS OF PANELS ARE FULLY BLOCKED BY EXISTING TERRAIN. THE TOP OF THE PERIMETER FENCE AND LANDSCAPING WILL BE VISIBLE FROM THE ROAD BEYOND THE EXISTING BUILDINGS.

NO.	REVISION	DATE

**VICEROY SOLAR**  
 12800 OLD FREDERICK RD, SYKESVILLE, MD 21784  
 DEED L15397 F.476  
 ZONED RC-B20  
 PARCEL 19  
 3RD ELECTION DISTRICT  
 HOWARD COUNTY, MARYLAND

**ROBERT H. VOGEL ENGINEERING, INC.**  
 ENGINEERS • SURVEYORS • PLANNERS  
 2300 N. RIDGE ROAD  
 ELICOTT CITY, MD 21043  
 TEL: 410.461.7666  
 FAX: 410.461.8961



DESIGN BY: RHV  
 DRAWN BY: KG  
 CHECKED BY: RHV  
 DATE: MARCH 2019  
 SCALE: AS SHOWN  
 W.O. NO.: 41993

PROFESSIONAL CERTIFICATE  
 I HEREBY CERTIFY THAT THESE DOCUMENTS  
 HAVE BEEN PREPARED BY ME OR UNDER MY  
 DIRECT SUPERVISION AND THAT I AM A  
 LICENSED PROFESSIONAL ENGINEER IN THE  
 DISTRICT OF COLUMBIA AND THE STATE OF  
 MARYLAND UNDER THE NAME OF THE STATE  
 OF MARYLAND, LICENSE NO. 16018193