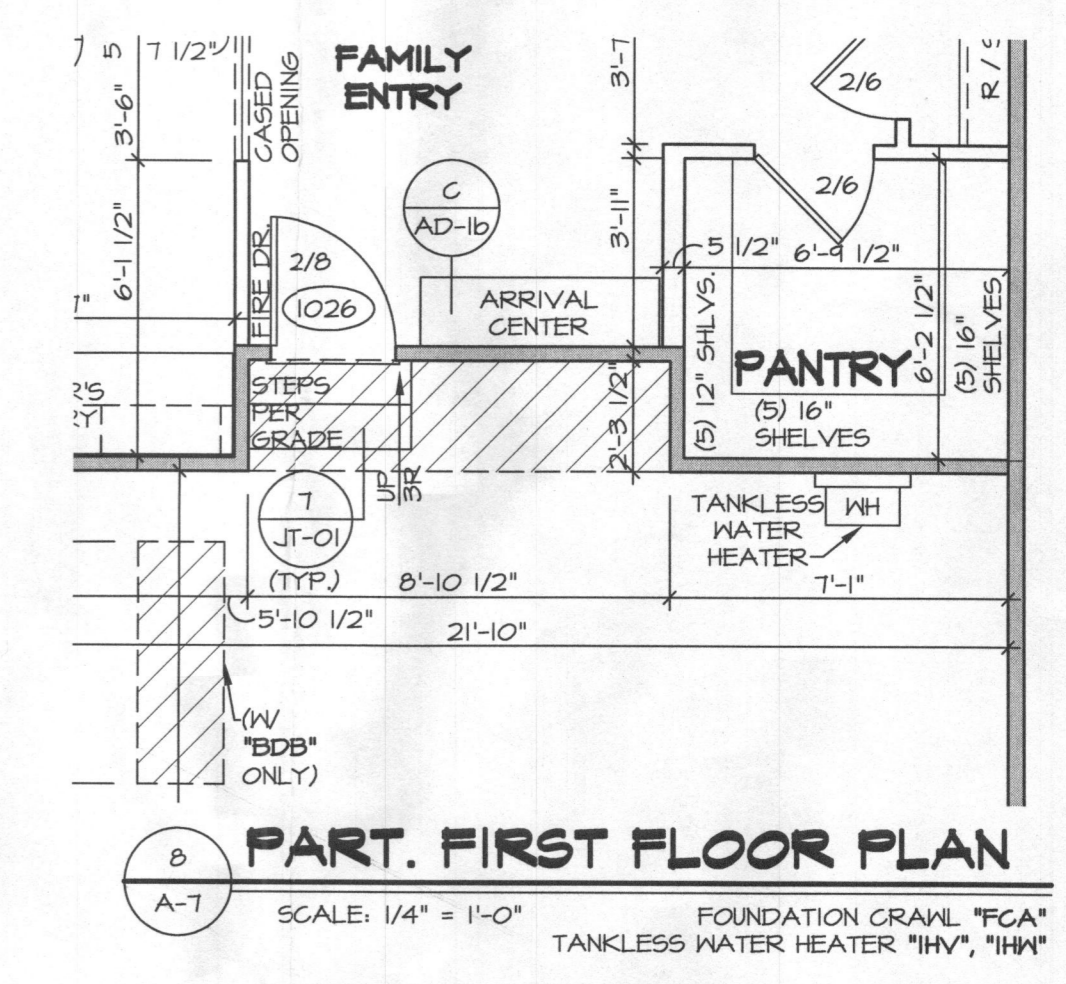
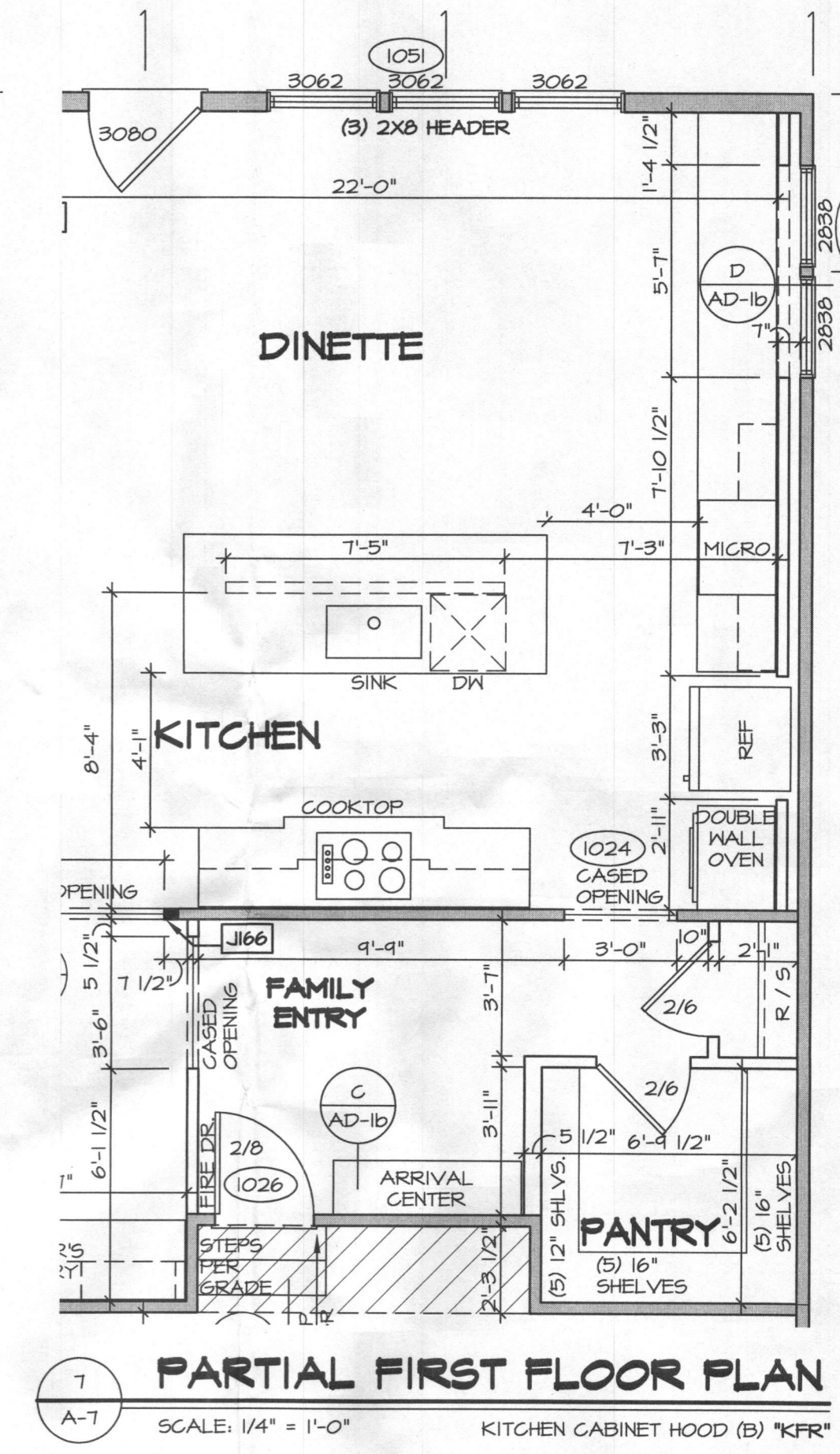


- NOTES:**
- GENERAL NOTES (N-1)
 - SCHEDULES (N-2)
 - LVL NAILINGS SCHEDULE (N-1)
 - SEE GENERAL NOTES (N-1) FOR ADDITIONAL INFORMATION.
- NOTE: ALL WINDOW HEADER HEIGHTS ARE 8'-0 1/2" UNLESS OTHERWISE NOTED
- LEGEND**
- BEARING WALL
 - NON BEARING WALL
 - INDICATES BEARING FROM POINT-LOAD ABOVE
 - JACKS
 - BEAM/HEADER
 - PAD FOOTING
 - STEEL COLUMN
 - PORTAL FRAME
 - JOIST/TRUSS
 - LVL
 - ENGINEERING PAGE NUMBER
- SEE FC DETAILS FOR FRAMING CONNECTORS



REMARKS

- ADDED NOTE FOR DROPPED CEILING HEIGHT PER PAR 30372
- ATK - REVISED BULKHEAD ABOVE GARAGE ENTRY DOOR (PAR ID 46458)
- ATK - REVISED RECESSED LIGHT AT BSH STAIRS TO LED FIXTURE PER DHR 1043
- GIE - CORRECTED FRONT TO BACK DIM. OF FIRST FLOOR BATH - ROUGH AUDIT
- JAB - ADDED FRONT TO BACK DIMENSION AT PANTRY - ROUGH AUDIT
- JAB - ADDED ENGINEERING # TO CASED OPENING (POTER/FAM, BHU) - ROUGH AUDIT
- JAB - ADDED DETAIL 11/11/11 - ROUGH AUDIT
- HW - TANKLESS WATER HEATER PROJECT DHR 111
- HW - TANKLESS WATER HEATER PROJECT DHR 111
- HW - TANKLESS WATER HEATER PROJECT DHR 111
- ZDM - UPDATED HALLWAY FIELD FRAME FOR LIGHT (PAR 44044)

REV. NO.	DATE	DESCRIPTION
1	10/20/16	ISSUED FOR PERMIT
2	11/10/16	REVISED PER DHR 1043
3	11/10/16	REVISED PER DHR 1043
4	11/10/16	REVISED PER DHR 1043
5	11/10/16	REVISED PER DHR 1043
6	11/10/16	REVISED PER DHR 1043
7	11/10/16	REVISED PER DHR 1043
8	11/10/16	REVISED PER DHR 1043
9	11/10/16	REVISED PER DHR 1043

NVR, Inc. owner, expressly reserves its common law copyright and all other rights in this drawing, and no part of this drawing may be reproduced, stored in a retrieval system, or transmitted in any form or by any means, electronic, mechanical, photocopying, recording, or by any information storage and retrieval system, without the prior written consent of NVR, Inc.

NVR
Architectural Services
5285 Washview Drive, Suite 100
Frederick, MD 21703

SET NO. 11900
VERSION 01
DRAWN BY BIM
DATE: 9/12/16
OPTION

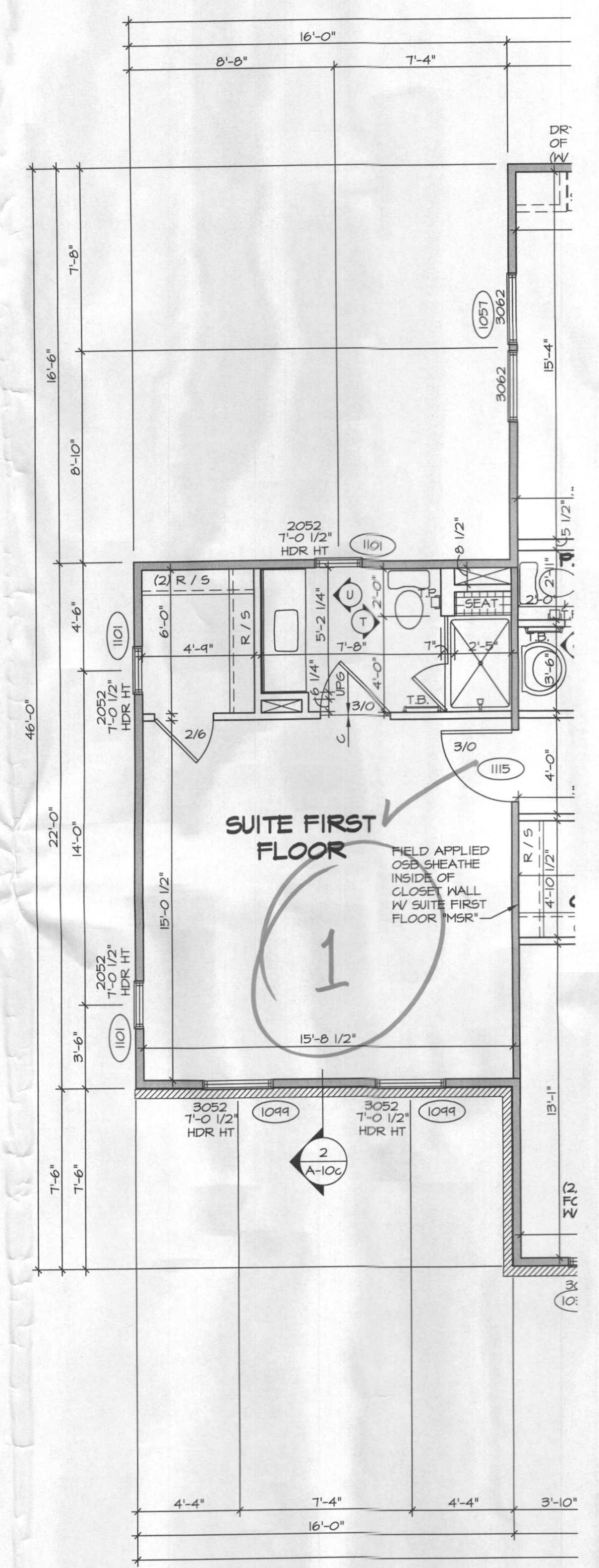
STRATFORD HALL
FIRST FLOOR PLAN

OPTION DESCRIPTION

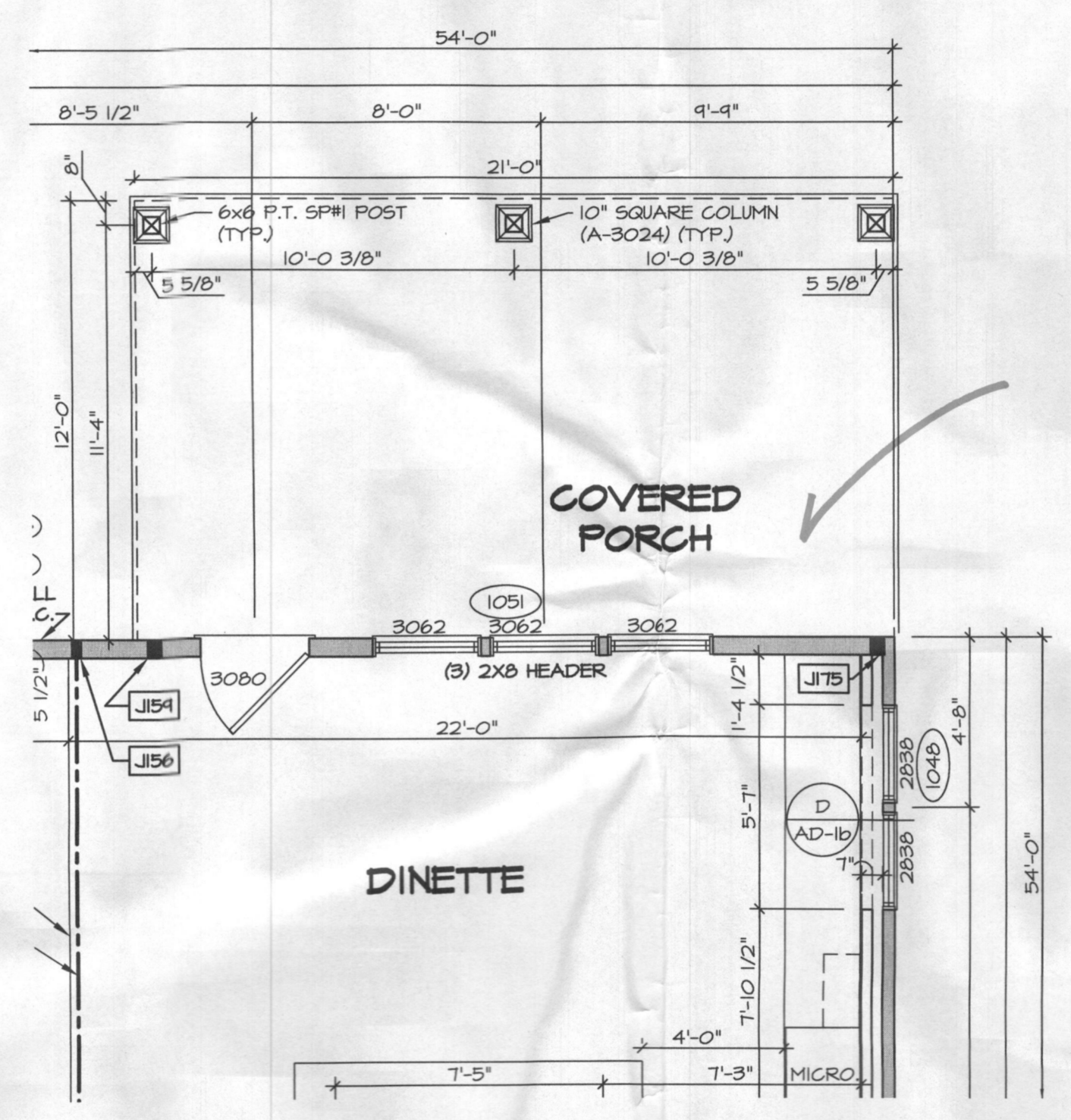
A-7

29

C:\NVR\Solves\STRATFORD HALL_11900_01_52_Sheets\Master_Sat_First_Floor_Plan.dwg 02/26/18 5:02 PM



1
A-7c PARTIAL FIRST FLOOR PLAN
SCALE: 1/4" = 1'-0" SUITE FIRST FLOOR "MSR"



2
A-7c PARTIAL FIRST FLOOR PLAN
SCALE: 1/4" = 1'-0" COVERED PORCH "EPE"

NOTES:
1. GENERAL NOTES (N-1)
2. SCHEDULES (N-2)
3. LVL NAILING SCHEDULE (N-1)
4. SEE GENERAL NOTES (N-1) FOR ADDITIONAL INFORMATION.

NOTE: ALL WINDOW HEADER HEIGHTS ARE 8'-0 1/2" UNLESS OTHERWISE NOTED

LEGEND

	BEARING WALL
	NON BEARING WALL
	INDICATES BEARING FROM POINT-LOAD ABOVE
	JACKS
	BEAM/HEADER
	PAD FOOTING
	STEEL COLUMN
	PORTAL FRAME
	JOIST/TRUSS
	LVL
	ENGINEERING PAGE NUMBER

SEE FC DETAILS FOR FRAMING CONNECTORS

ONE BEDROOM
FIRST FLOOR

SHEET NO. A-7c	MODEL STRATFORD HALL	SET NO. 11900	DATE	REV. NO.	REMARKS
	DRAWING TITLE FIRST FLOOR PLAN PARTIALS	VERSION 01	01/24/17	1	11M - STANDARD DETAILS B/D
	OPTION DESCRIPTION SUITE FIRST FLOOR	DRAWN BY MSG	4/10/17	2	11K - PROPOSED ADDED POST AT COVERED PORCH FOR RAILING SUPPORT
	COVERED PORCH	DATE: 4/13/16	5/25/17	3	1158 - RELOCATED ATTIC ACCESS IN 1ST FLR. SUITE. ADDED NOTE (PAR #4691)
	3.1	OPTION MSR EPE	MSR EPE	4	6/22/17 1159 - MOVED ATT. ACC. FROM 1ST FLR. SUITE TO 2ND FLR. LAIN. (PAR #4691)
			5	8/1/17 1159A - REVISED PLACEMENT OF "EPE" COLUMNS PER DTL (DET-8)	

NVR
NVR, Inc.
Architectural Services
5285 Westview Drive, Suite 100
Frederick, MD 21703

LEGEND

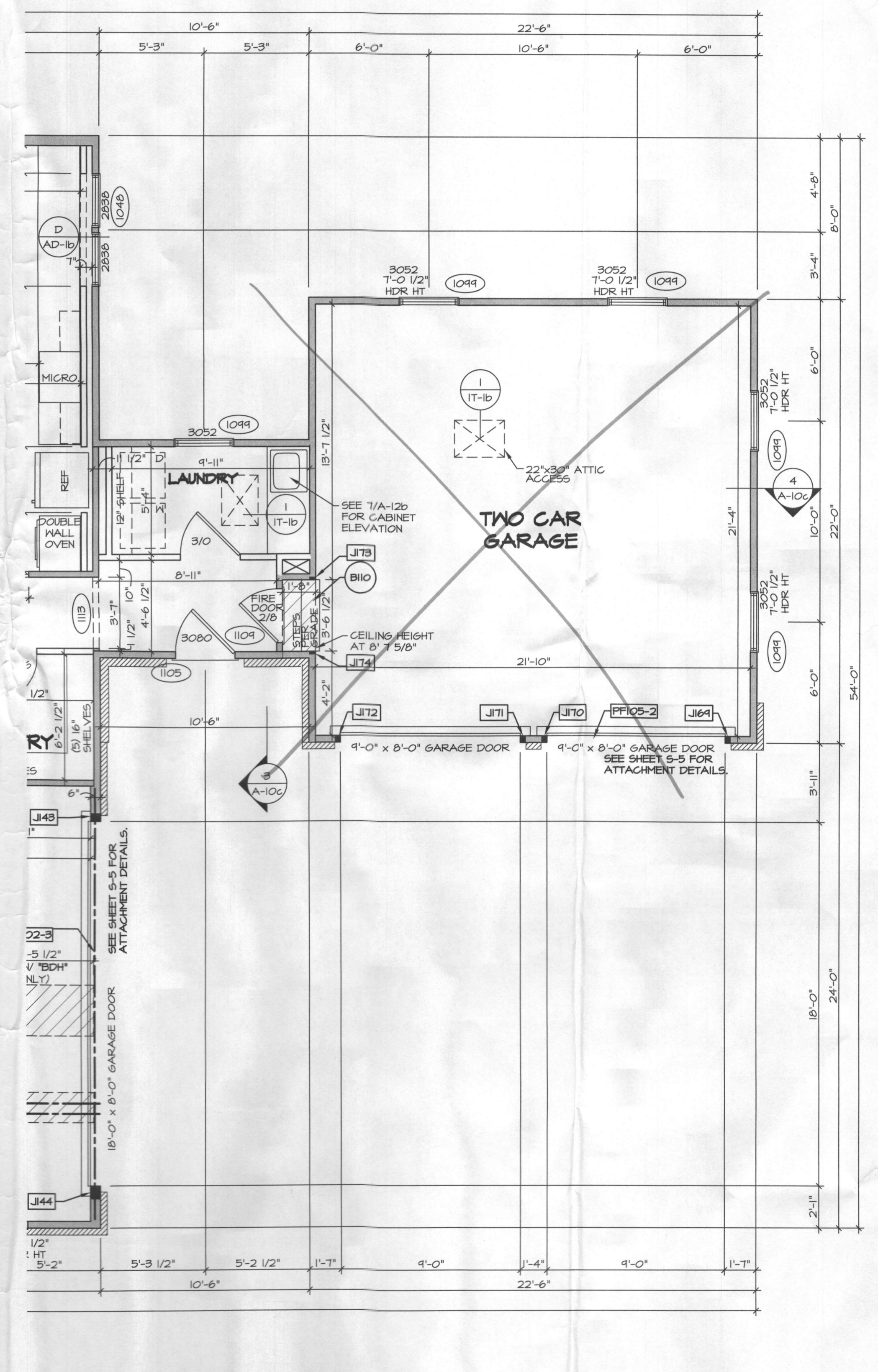
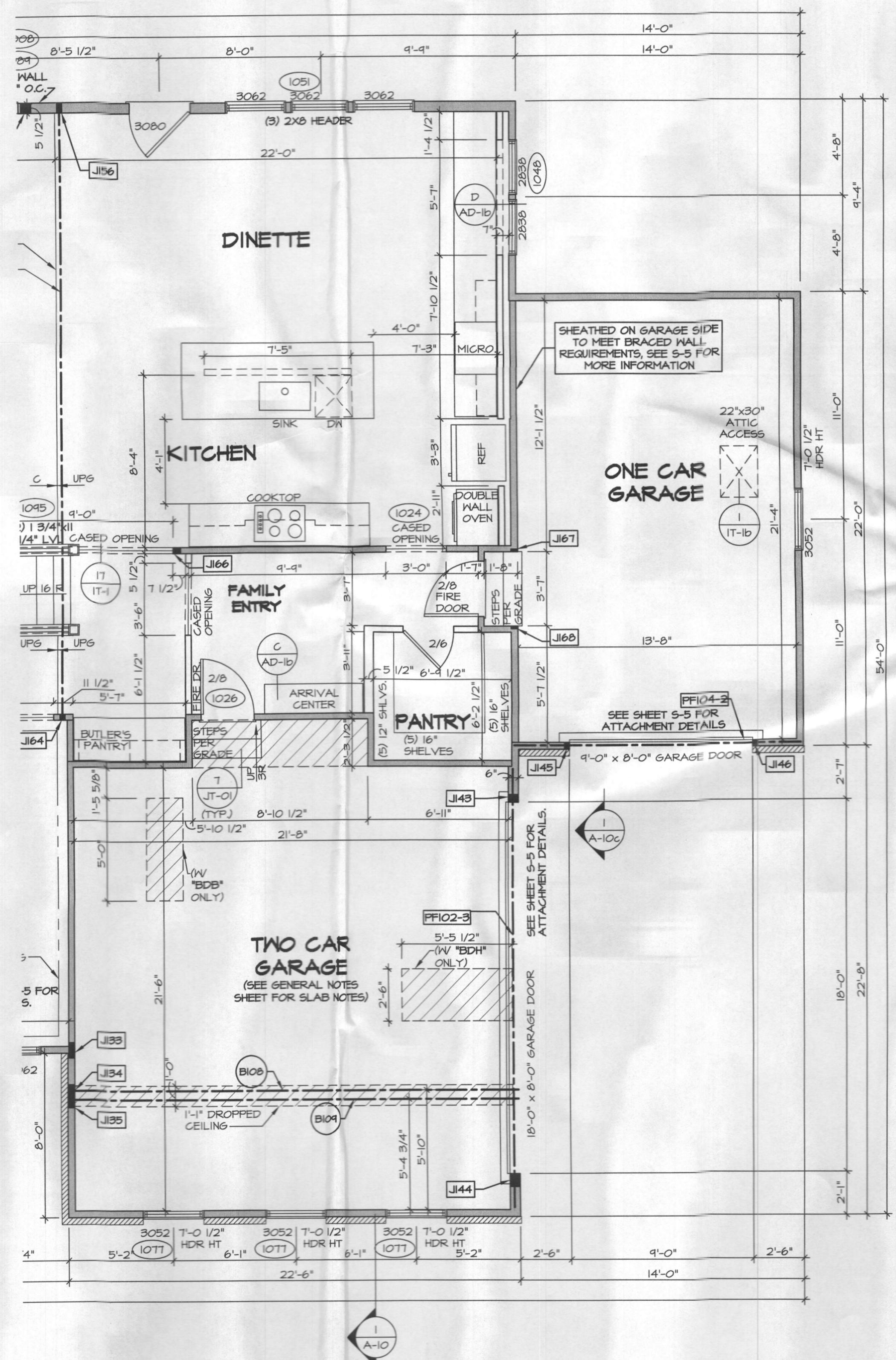
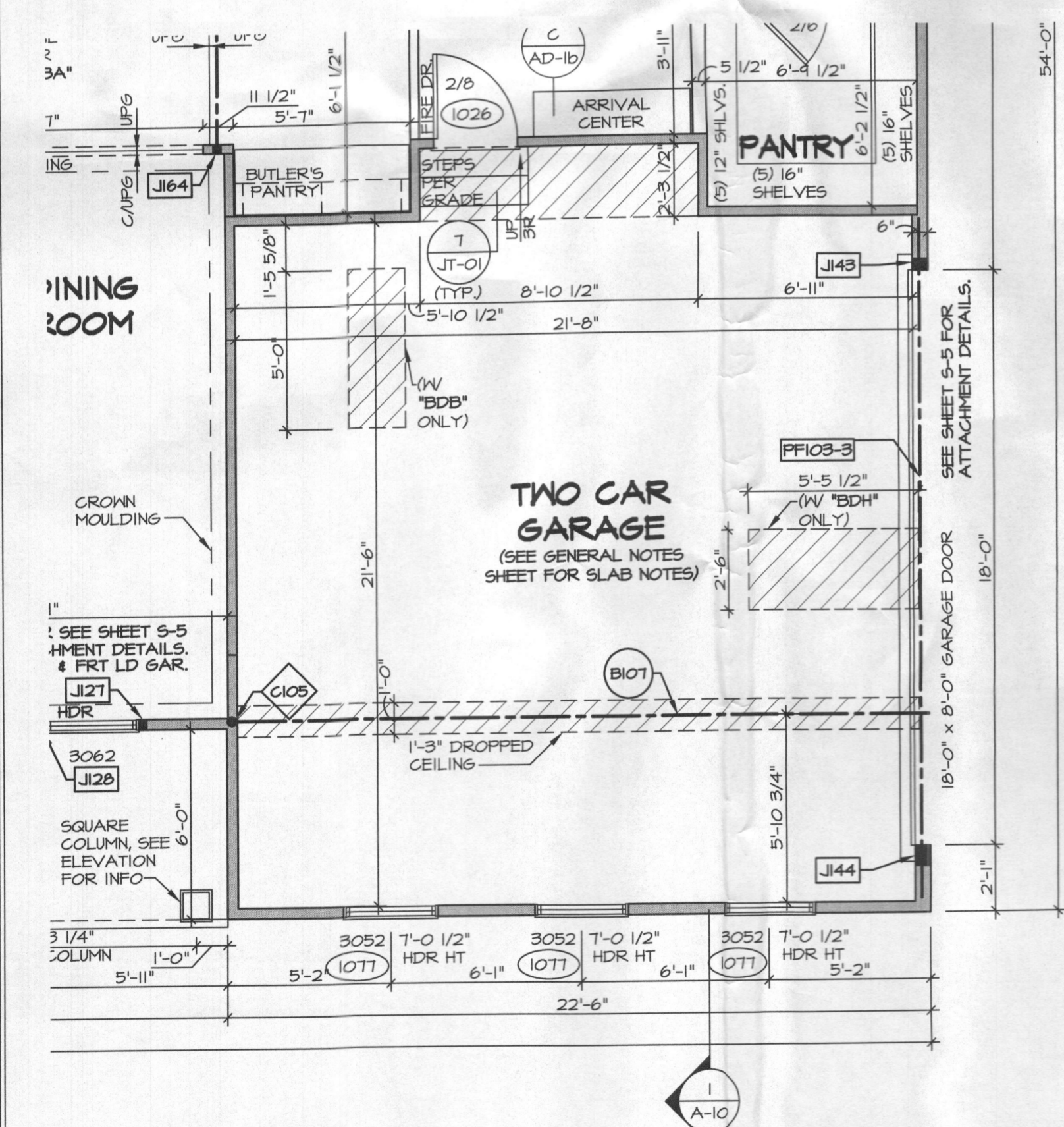
- BEARING WALL
- - - NON BEARING WALL
- ⊙ INDICATES BEARING FROM POINT-LOAD ABOVE
- ⊥ JACKS
- ⊖ BEAM/HEADER
- ⊖ PAD FOOTING
- ⊖ STEEL COLUMN
- ⊖ PORTAL FRAME
- ⊖ JOIST/TRUSS
- ⊖ LVL
- ⊖ ENGINEERING PAGE NUMBER

SEE FC DETAILS FOR FRAMING CONNECTORS

NOTES:

- GENERAL NOTES (N-1)
- SCHEDULES (N-2)
- LVL NAILING SCHEDULE (N-1)
- SEE GENERAL NOTES (N-1) FOR ADDITIONAL INFORMATION.

NOTE: ALL WINDOW HEADER HEIGHTS ARE 8'-0 1/2" UNLESS OTHERWISE NOTED



REMARKS

REV. NO.	DATE	DESCRIPTION
1	07/24/11	TM - STANDARD DETAILS 3.0
2	6/12/11	ATK - REVISED BULKHEAD ABOVE GARAGE ENTRY DOOR (PAR ID 46458)
3	7/2/11	JAB - ADDED DETAIL "T1711" - ROUGH ADIT
4	7/9/11	ATK - MOVED LAUNDRY ROOM WALL FOR DRYER VENT (PAR ID 47219)
5	8/1/11	SPH - REPLACED FIRE RATED ATTIC ACCESS W/ STD. ACCESS (6C-ITEM #96059)
6	11/2/11	SPH - REMOVED 2/8 CAGED OPENING AT FAMILY ENTRY AND "6AB" PER CODE
7	1/6/12	ATK - REMOVED FLUSH BEAM WITH NOTE AND JACKS (PAR ID 44844)
8	1/6/12	ATK - ADDED ELEVATION REFERENCE TO LAUNDRY WITH 6AB (PAR ID 44859)

STRATFORD HALL
DRAWING TITLE
FIRST FLOOR PLAN PARTIALS

OPTION DESCRIPTION
TWO CAR SIDE ENTRY GARAGE
ONE CAR SIDE ATTACHED FRONT ENTRY GARAGE
TWO CAR SIDE ATTACHED FRONT ENTRY GARAGE

SHEET NO. **A-7d**
3.12

SET NO. 11900
VERSION 01
DRAWN BY MEG
DATE: 4/13/16
OPTION
GCC
GAA
GAB

NVR, Inc. reserves the common law copyright and all other rights in and to the drawings, specifications, and any other information contained herein, without first obtaining the expressed written consent of NVR, Inc.

NVR
NVR, Inc.
Architectural Services
5285 Westview Drive, Suite 100
Frederick, MD 21703

C:\NVA\Solves\STRATFORD_HALL_11900_01_52A_Sheets\Master_Sch\Floor Plan\3.1.2_A-7d_Plan_1_GAR.dwg 02/26/18 - 5:03 PM

NOTES:
 1. GENERAL NOTES (N-1)
 2. SCHEDULES (N-2)
 3. LVL NAILING SCHEDULE (N-1)
 4. SEE GENERAL NOTES (N-1) FOR ADDITIONAL INFORMATION.

LEGEND

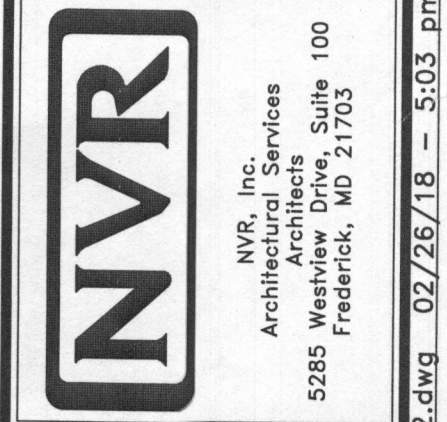
	BEARING WALL
	NON BEARING WALL
	INDICATES BEARING FROM POINT-LOAD ABOVE
	JACKS
	BEAM/HEADER
	PAD FOOTING
	STEEL COLUMN
	PORTAL FRAME
	JOIST/TRUSS
	LVL
	ENGINEERING PAGE NUMBER

SEE PG DETAILS FOR FRAMING CONNECTORS

REMARKS

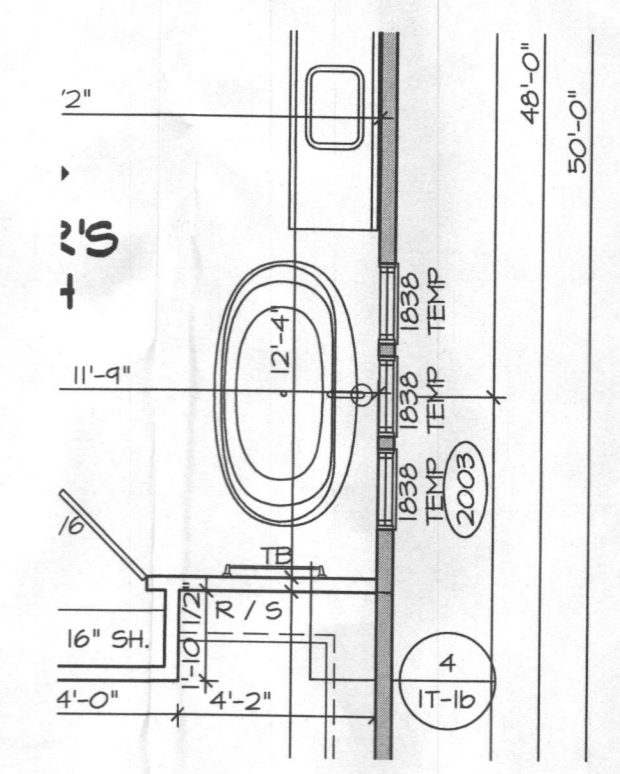
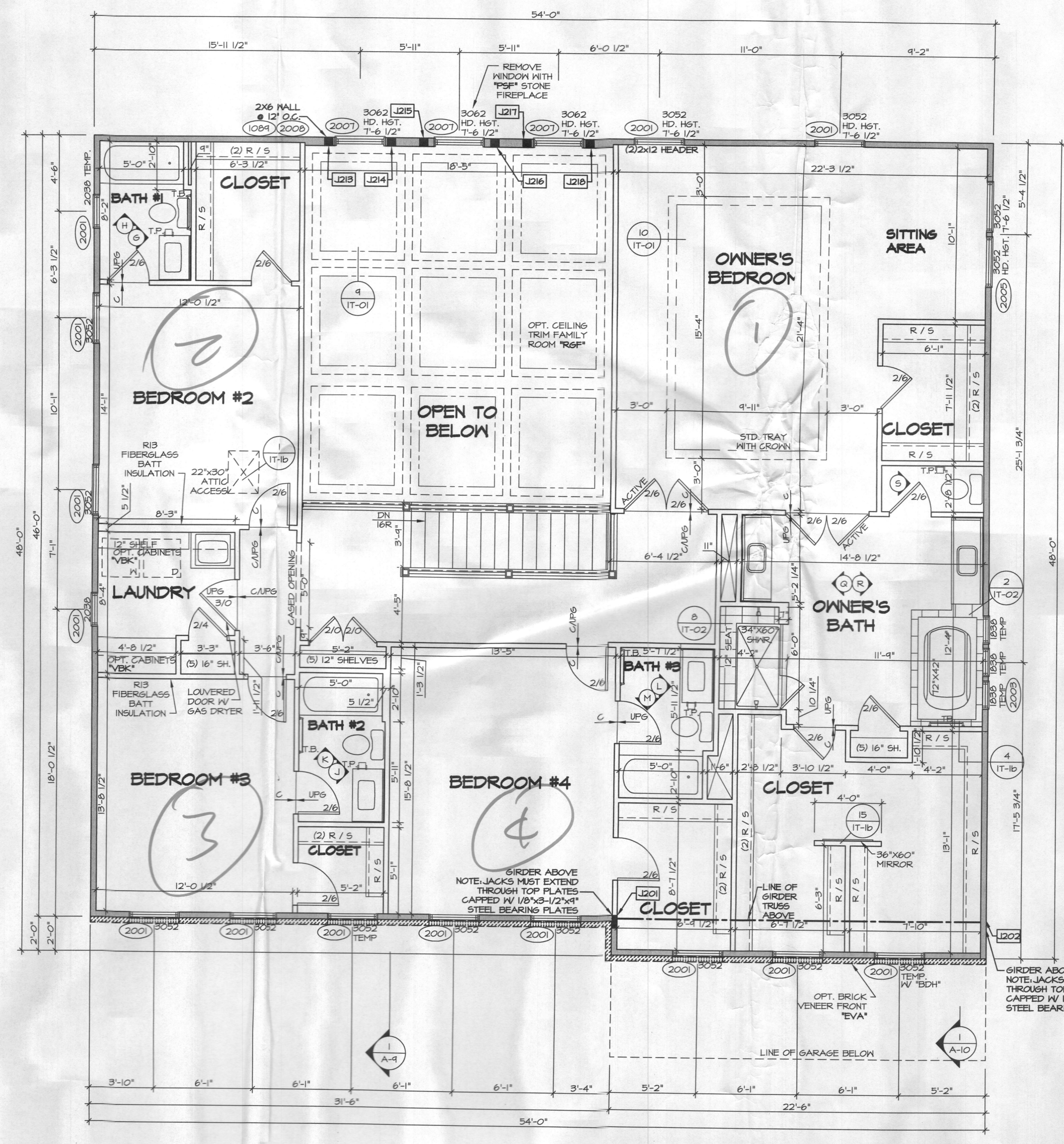
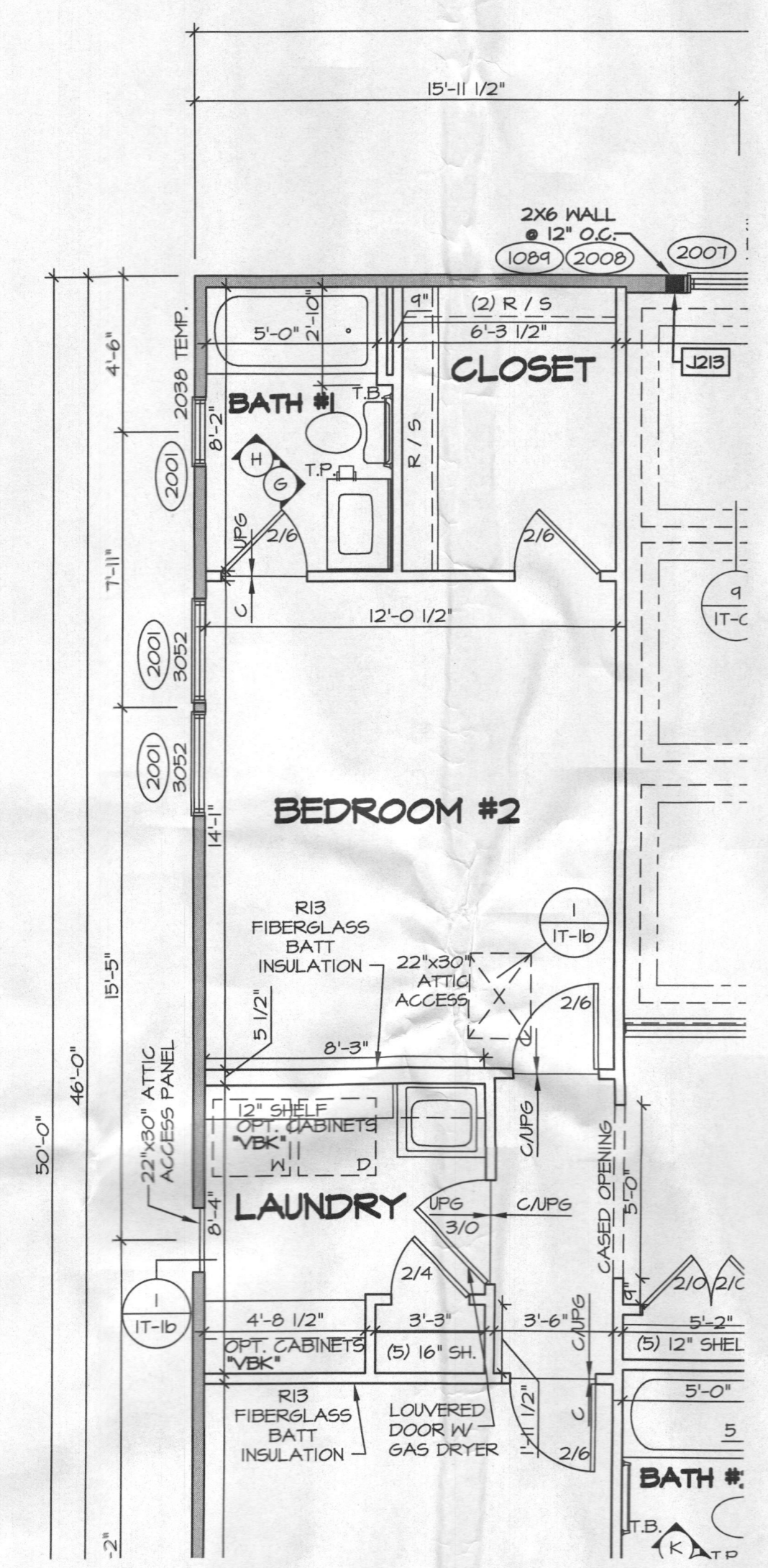
REV. NO.	DATE	DESCRIPTION
1	01/24/11	TM - STANDARD DETAILS 3/0
2	01/27/11	M56 - ADDED ACCESS PANEL IN LAIN TO REACH "MSR" ATTIC (PAR 448217)
3	01/28/11	TNG - ADDED CEILING TRIM OPTION
4	10/30/11	M56 - ADDED TB, REMOVED T.S.'S FROM OWNER'S BATH (PAR 448294)

NVR, Inc. owner, expressly reserves the common law copyright and all other rights in and to the drawings, specifications, schedules, and other documents, or any part thereof, and no one else is to be assigned or licensed to reproduce, copy, or otherwise use these drawings, specifications, schedules, or other documents, or any part thereof, without the express written consent of NVR, Inc.



MODEL NO. 11900-01-5A	SHEET NO. 32.1
PROJECT TITLE STRATFORD HALL SECOND FLOOR PLAN	DATE: 9/7/2016
OPTION DESCRIPTION	OPTION

SHEET NO. A-8	32.1
---------------	------



FOUR BEDROOM SECOND FLOOR

ELEVATION A "ELA"
 ELEVATION K "ELK"
 FOUR BEDROOM "BDB"
 OWNER'S BATHROOM SOAKING TUB & ROMAN SHOWER "AMH"