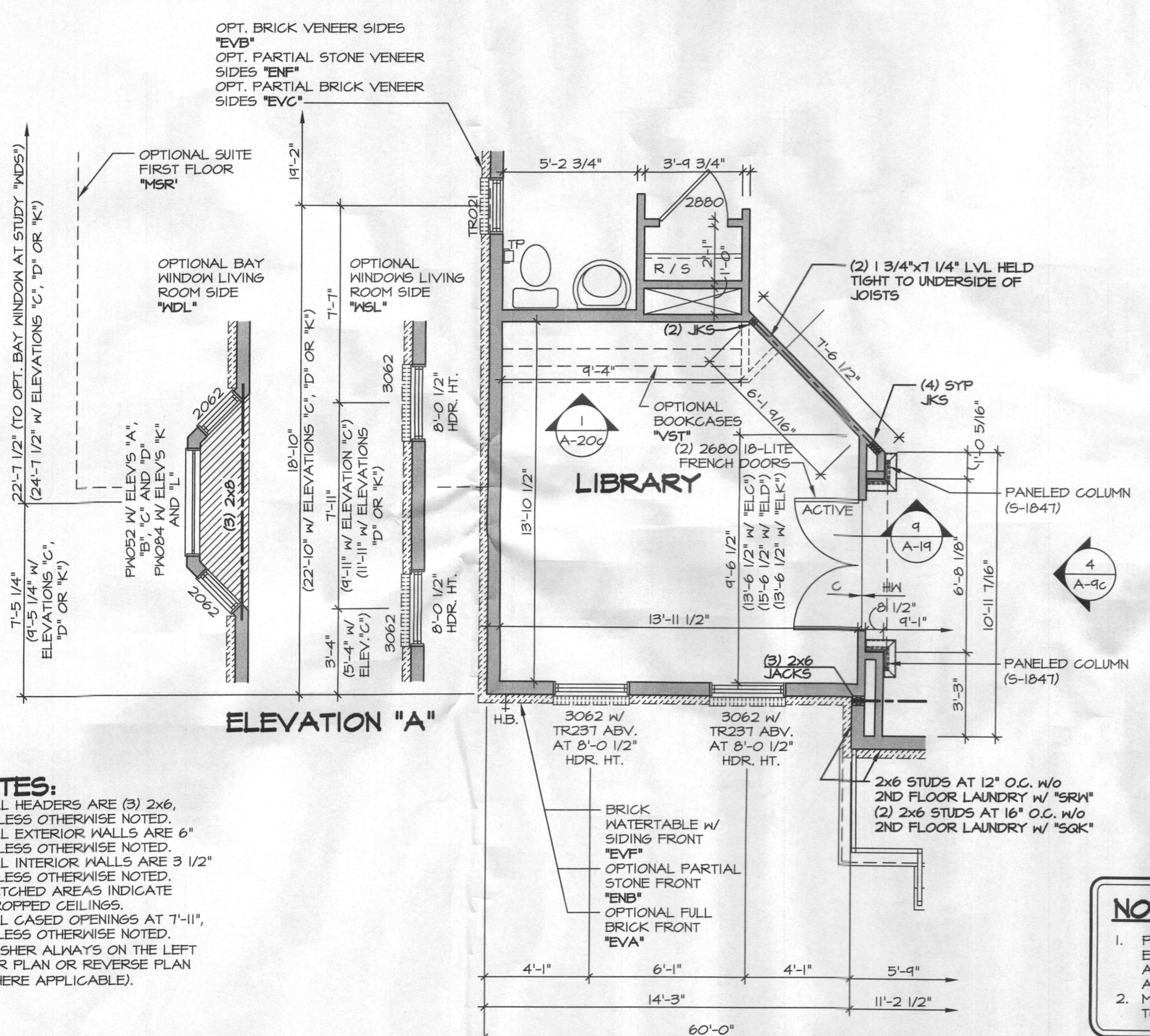


PARTIAL ELEVATION
SCALE: 1/4" = 1'-0"
LIBRARY "MAT"



ELEVATION "A"

- NOTES:**
1. ALL HEADERS ARE (3) 2x6, UNLESS OTHERWISE NOTED.
 2. ALL EXTERIOR WALLS ARE 6" UNLESS OTHERWISE NOTED.
 3. ALL INTERIOR WALLS ARE 3 1/2" UNLESS OTHERWISE NOTED.
 4. HATCHED AREAS INDICATE DROPPED CEILINGS.
 5. ALL GATED OPENINGS AT 7'-11", UNLESS OTHERWISE NOTED.
 6. WASHER ALWAYS ON THE LEFT PER PLAN OR REVERSE PLAN (WHERE APPLICABLE).

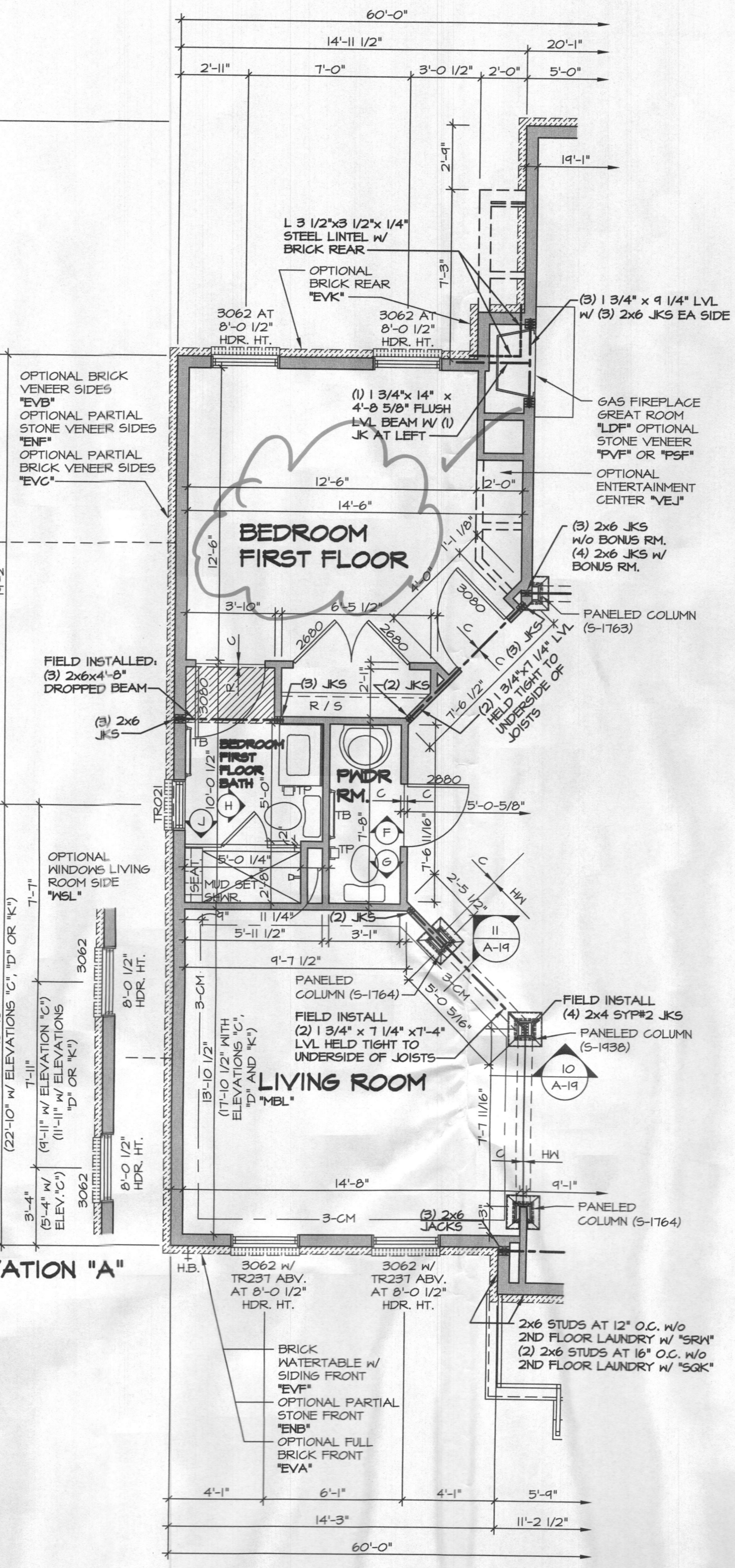
NOTE:
SEE SHEET S-6 FOR BRACED WALL PANEL LOCATIONS

PARTIAL FLOOR PLAN
SCALE: 1/4" = 1'-0"
LIBRARY "MAT"
NOTE: N/A W/ OPT. CONSERVATORY "MCO"

NOTE:

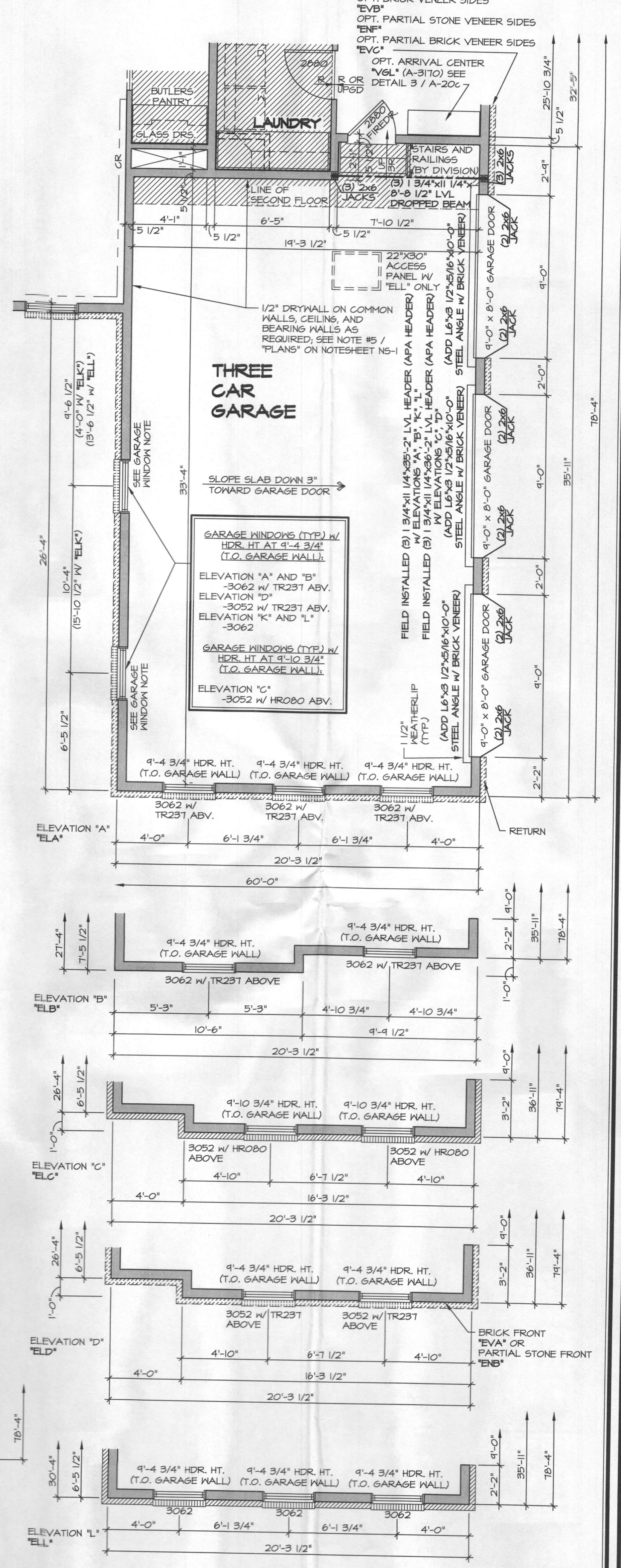
1. PARTIAL PLANS SHOWN W/ ELEVATION "A". SEE SHEET A-9 AND A-10 FOR ADDITIONAL INFORMATION.
2. MATCH VENEER ACCORDING TO SELECTED ELEVATION.

FOR SEPTIC DESIGN:
1 BEDROOM THIS FLOOR.



ELEVATION "A"

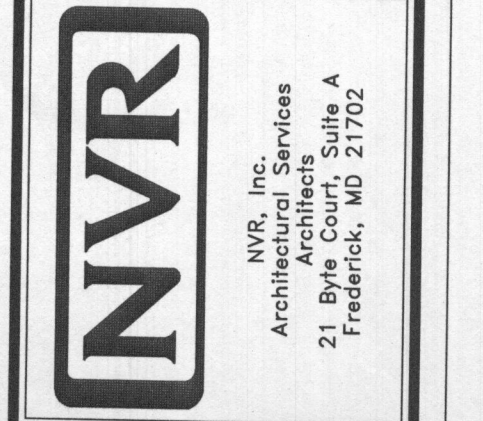
PARTIAL FLOOR PLAN
SCALE: 1/4" = 1'-0"
BEDROOM FIRST FLOOR "BAR"
NOTE: N/A W/ OPT. SUITE FIRST FLOOR "MSR"



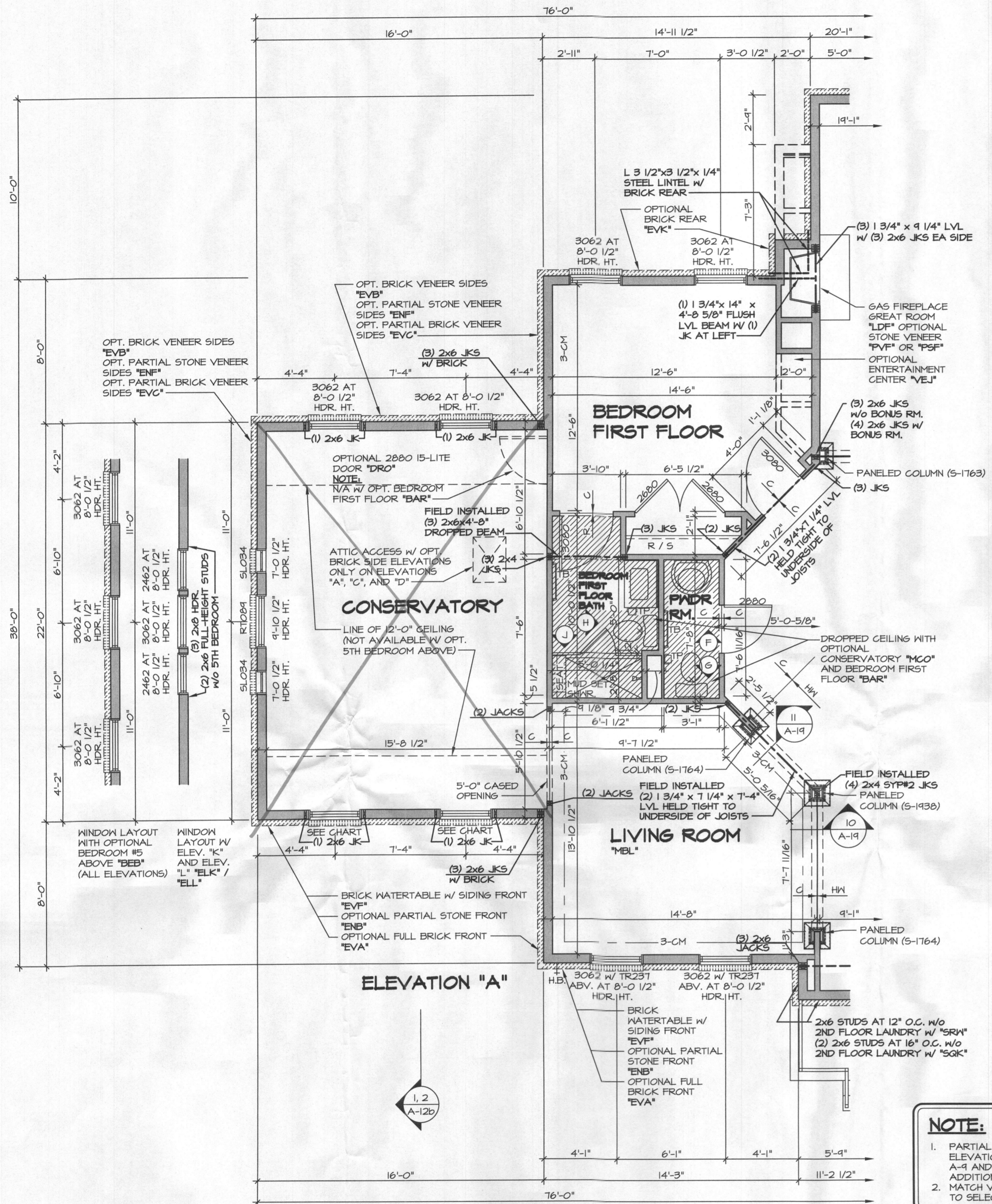
THREE CAR GARAGE

PARTIAL FLOOR PLAN
SCALE: 1/4" = 1'-0"
THREE CAR GARAGE SIDE ENTRY "6CE"

REV. NO.	DATE	REMARKS
1	11/20/24	EL5 - REVISED SHOWER WIDTH IN BEDROOM FIRST FLOOR BATH (PAR 28059)
2	11/25/24	56A - ADJUST DIMENSIONS
3	12/25/24	56B - PAR 83478 - ROTATED JACKS IN FOTER COLUMNS & REVISED TO FIELD INSTALLED
4	6/18/25	CL5 - SHIFTER DOOR INTO FIRST FLOOR BEDROOM FOR CASING (PAR ID 33954)
5	6/18/25	CL6 - FLAT BULL ARRIVAL CENTER PROJECT
6	8/6/25	CL5 - REVISED FIREDOOR INTO GARAGE TO A 2800 (PAR ID 34928)
7	10/31/25	EBP - 2022 VA CODE UPDATE
8	12/17/25	585 - PAR 196384 - REVISED GARAGE SLAB HEIGHT
9	2/21/26	15AD - PROJECT #1855 - ADDED COUNTERTOP LAYOUTS FOR OWNERS BATH



MODEL	CLIFTON PARK II
DRAWING TITLE	FIRST FLOOR PARTIAL PLANS
DATE:	1/2/25
OPTION	MAT
BAR	EAR
GCE	GCE
SHEET NO.	A-9c
OPTION DESCRIPTION	LIBRARY BEDROOM FIRST FLOOR THREE CAR SIDE ENTRY GARAGE
50	

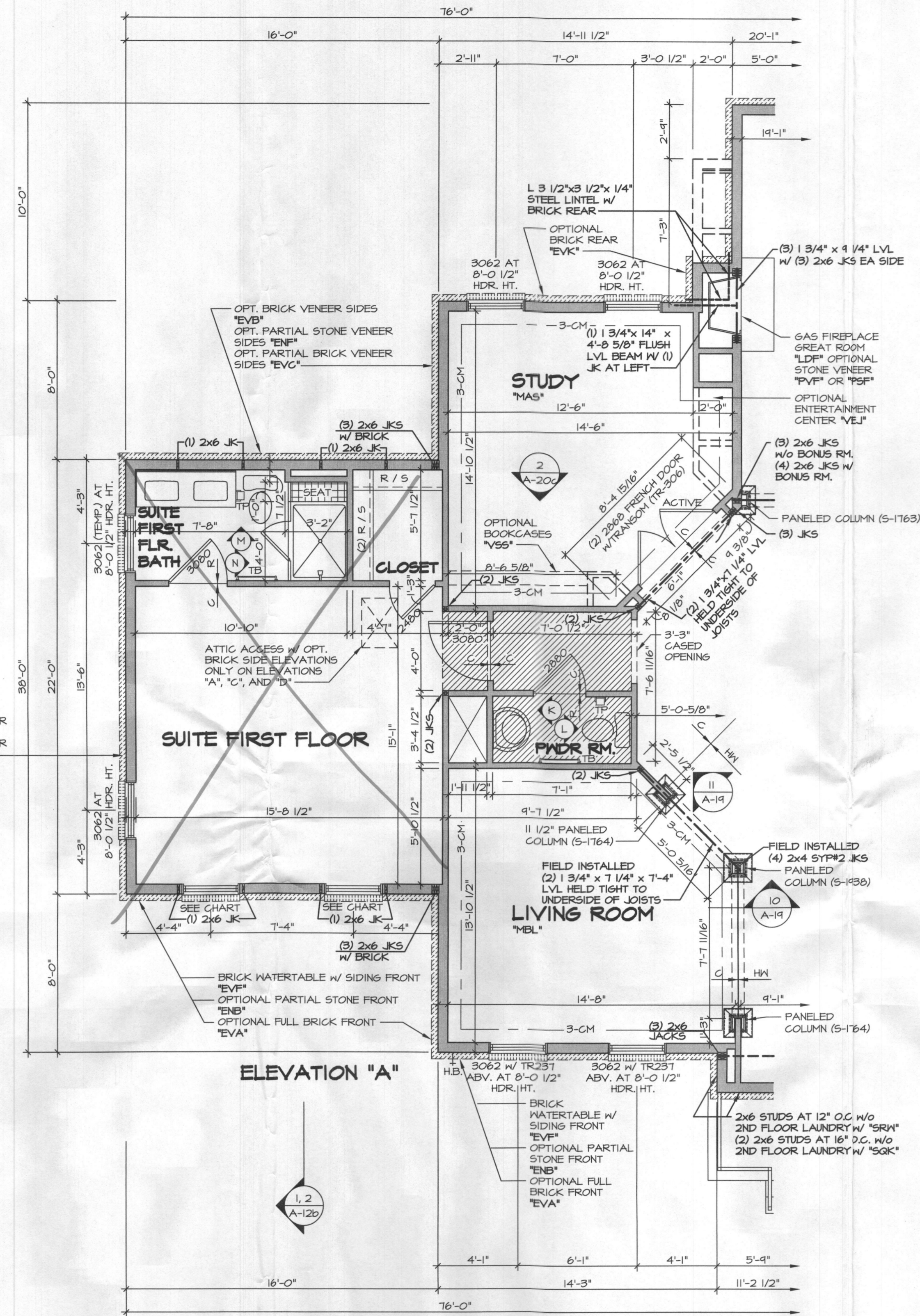


1 PARTIAL FLOOR PLAN
SCALE: 1/4" = 1'-0"

CONSERVATORY "MCO"
SHOWN WITH FIRST FLOOR BEDROOM "BAR"
NOTE: CONSERVATORY "N/A" W/ OPT. LIBRARY "MAT"

FRONT WINDOWS OF CONSERVATORY OR SUITE FIRST FLOOR (TYP.) W/ STANDARD SOLE BEDROOM PLAN AT T-0 1/2" HDR. HT.	FRONT WINDOWS OF CONSERVATORY OR SUITE FIRST FLOOR (TYP.) W/ OPTIONAL FIVE BEDROOM PLAN AT T-0 1/2" HDR. HT.
ELEVATION "A" AND "B" -3062	ELEVATION "A" AND "B" -3062 W/ TR231 ABV.
ELEVATION "C", "D", "K", AND "L" -3062	ELEVATION "C", "K" AND "L" -3062
ELEVATION "D" -3062 W/ TR231 ABV.	

NOTE:
1. PARTIAL PLANS SHOWN W/ ELEVATION "A". SEE SHEET A-9 AND A-9D FOR ADDITIONAL INFORMATION.
2. MATCH VENEER ACCORDING TO SELECTED ELEVATION.



2 PARTIAL FLOOR PLAN
SCALE: 1/4" = 1'-0"

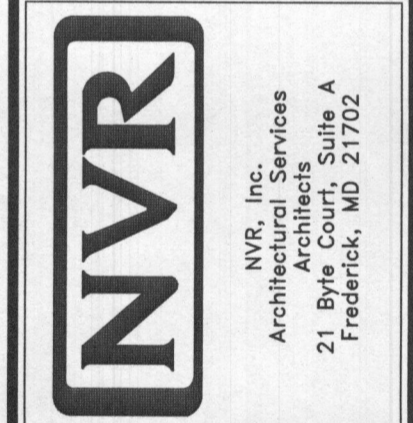
SUITE FIRST FLOOR "MSR"
NOTE: N/A W/ BEDROOM FIRST FLOOR "BAR"

NOTES:
1. ALL HEADERS ARE (3) 2x6, UNLESS OTHERWISE NOTED.
2. ALL EXTERIOR WALLS ARE 6" UNLESS OTHERWISE NOTED.
3. ALL INTERIOR WALLS ARE 3 1/2" UNLESS OTHERWISE NOTED.
4. HATCHED AREAS INDICATE DROPPED CEILING.
5. ALL CASED OPENINGS AT T-11", UNLESS OTHERWISE NOTED.
6. WASHER ALWAYS ON THE LEFT PER PLAN OR REVERSE PLAN (WHERE APPLICABLE).

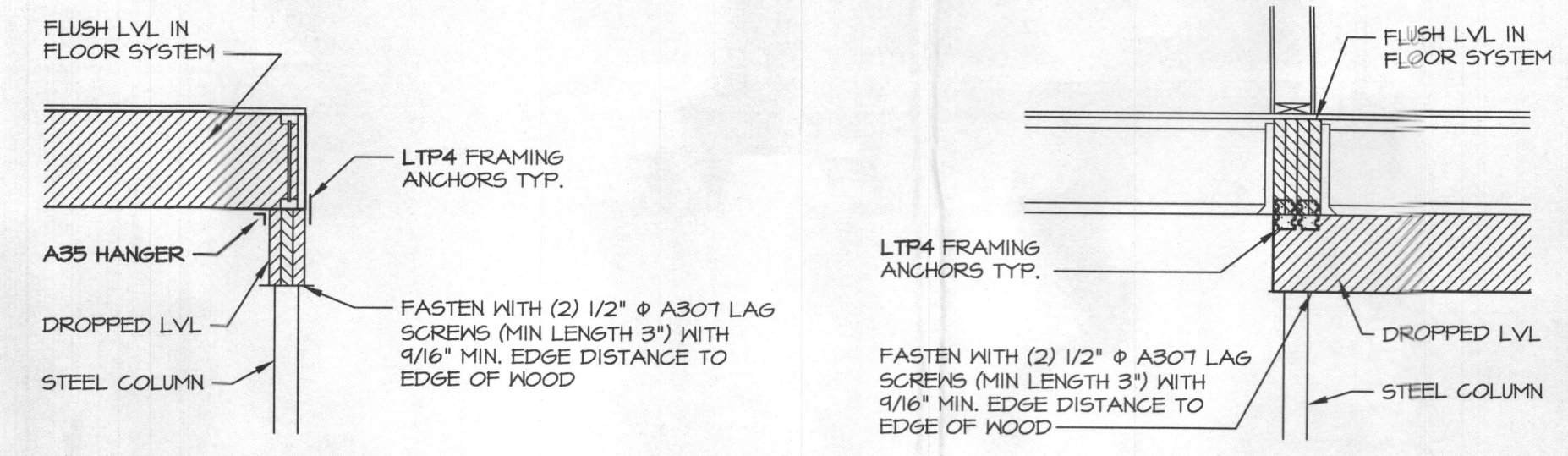
NOTE:
SEE SHEET S-6 FOR BRACED WALL PANEL LOCATIONS

REV. NO.	DATE	REMARKS
10	1/14/15	5444 - SHIFTED WINDOWS FOR SUITE FIRST FLOOR "MSR" 9" PAR 3012T
11	4/29/15	585 - PAR #2476 - ROTATED JACKS IN FOTER COLUMNS I REVISED TO FIELD INSTALLED
12	10/25/15	EBB - 2012 VA CODE UPDATE
13	12/25/16	585 - PAR #2605 - CREATED PARTIAL FOR BAR / REVISED LOST LAYOUT 45-1 FOR BAR
14	2/21/17	KAD - PROJECT #1955 - ADDED CENTER TOP LAYOUTS FOR OWNERS BATH
15	4/24/14	515 - ADJUSTED WALLS AT STUDY BOOKCASE AREA
7	5/1/14	A.H. - PAR # 23945 (ADDED ATTIC ACCESS)
6	5/9/14	A.H. - ADDED ELEVATION "L" TO SET
5	8/13/14	J.R. - REVISED FULL COLUMN FROM S-1162 TO S-1936 (PAR #26613)

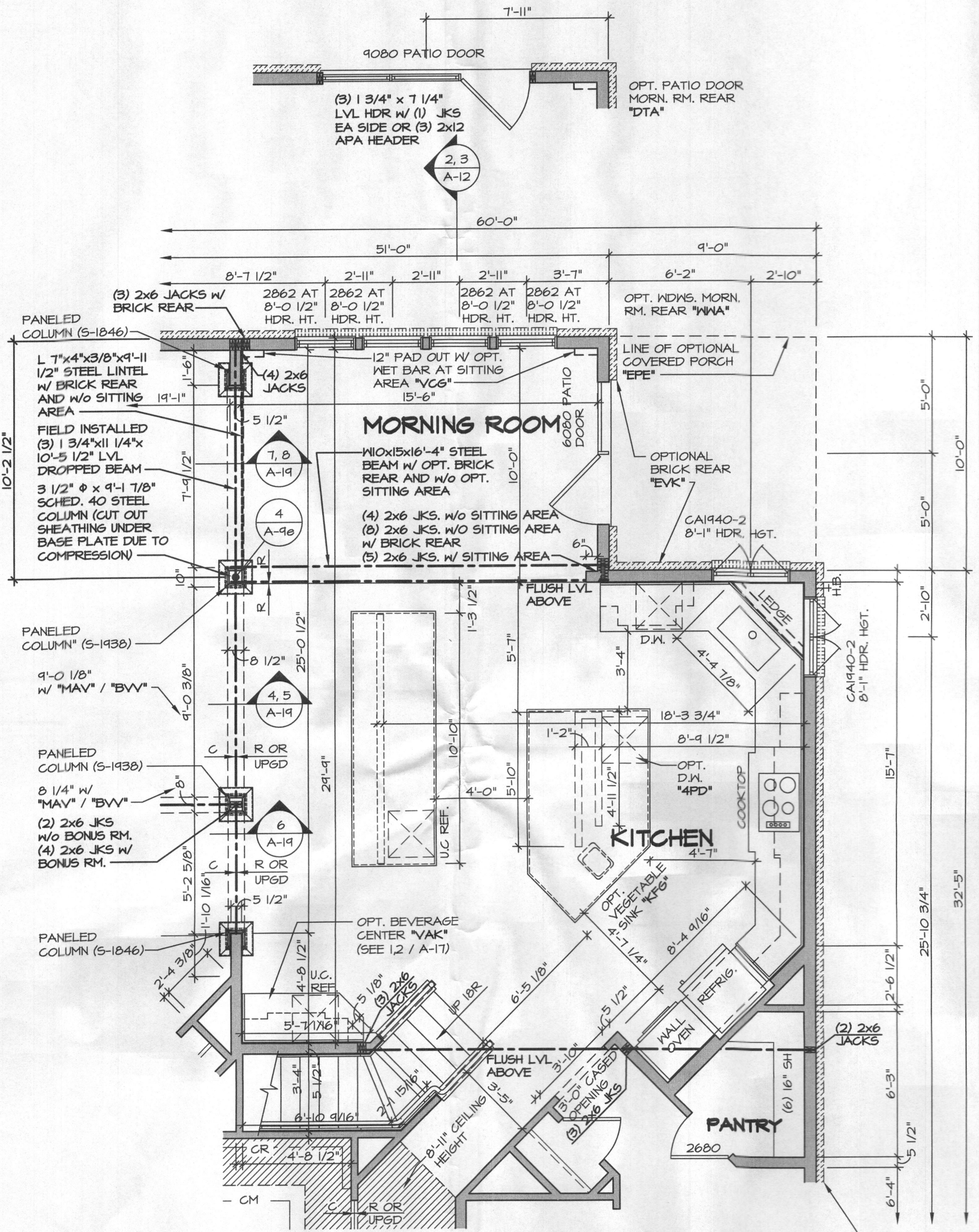
NVR, Inc., owner, expressly reserves its common law copyright and all other rights in and to the drawings, specifications, and other documents, in whole or in part, reproduced, changed, or copied in any form or manner whatsoever, without the prior written consent of NVR, Inc.



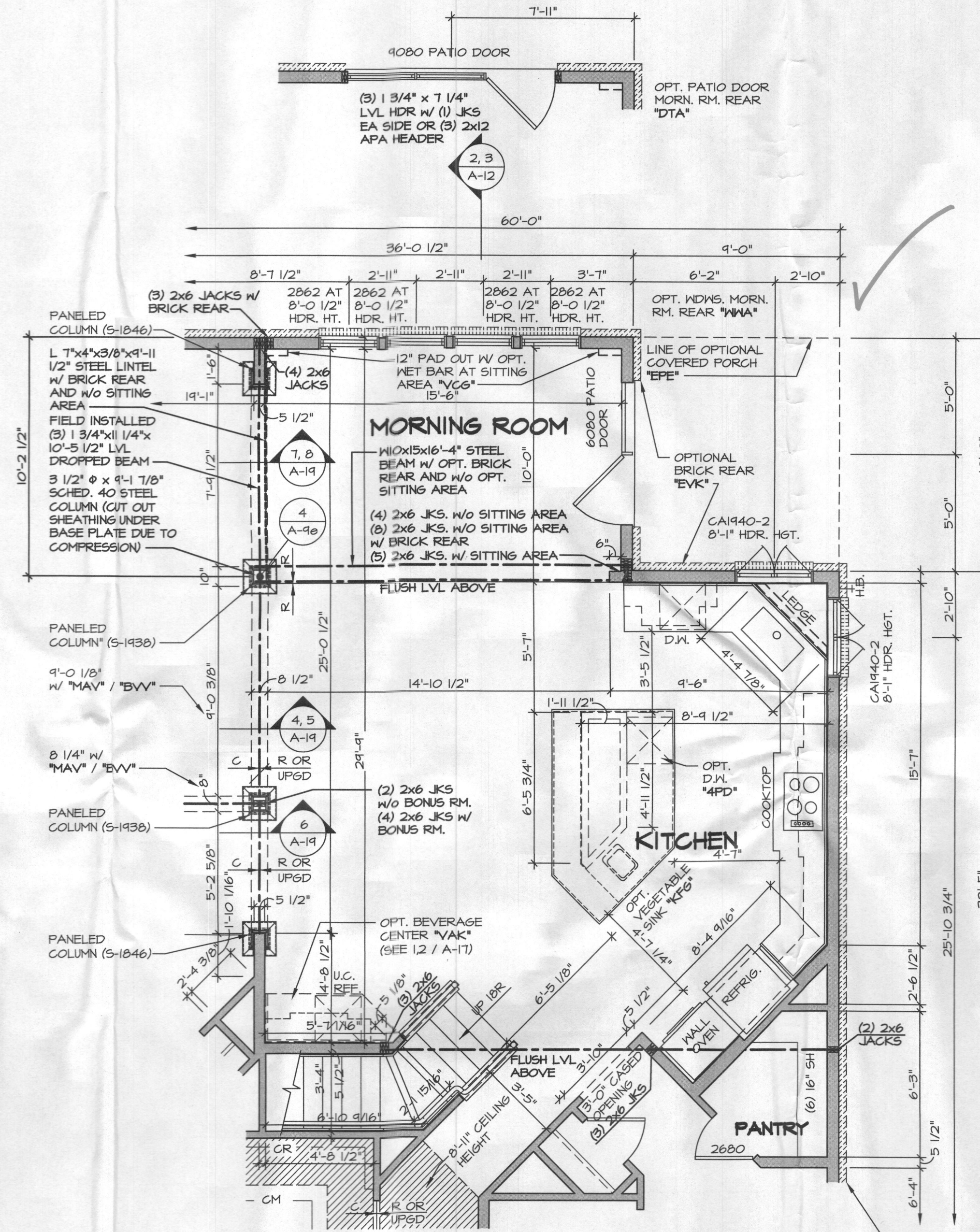
SHEET NO.	MODEL	SET NO.	VERSION	DATE:	OPTION
A-9d	CLIFTON PARK II	10300	01	1/2/15	MCO
	DRAWING TITLE				MSR
	FIRST FLOOR PARTIAL PLANS				
	CONSERVATORY				
	SUITE FIRST FLOOR				
51					



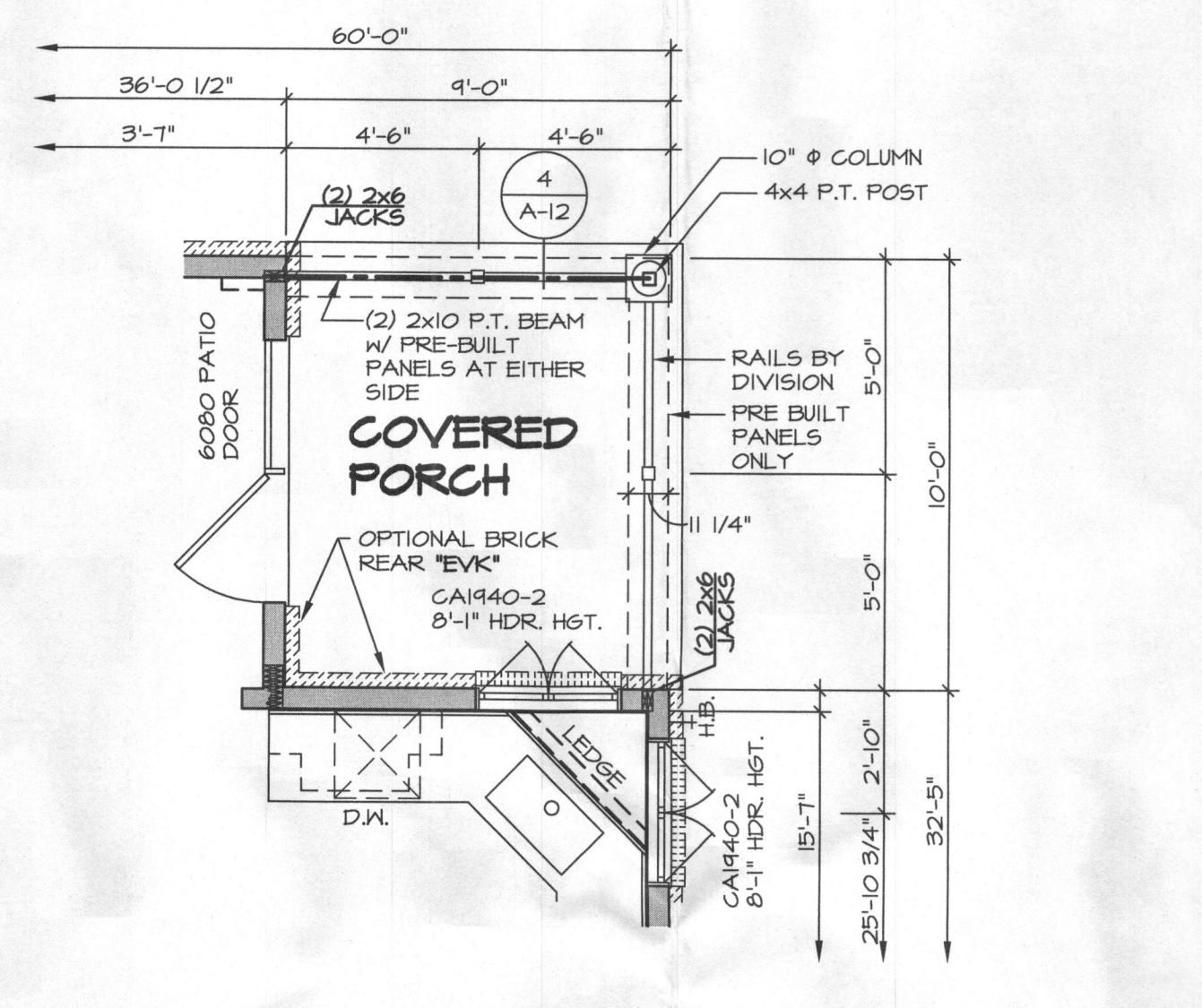
4 ATTACHMENT DETAIL
SCALE: 1/2" = 1'-0"



2 PARTIAL FLOOR PLAN
SCALE: 1/4" = 1'-0"
MORNING ROOM W/
GOURMET ISLAND
"MAA" / "KFF"



1 PARTIAL FLOOR PLAN
SCALE: 1/4" = 1'-0"
MORNING ROOM
"MAA"



3 PARTIAL FLOOR PLAN
SCALE: 1/4" = 1'-0"
COVERED PORCH
"EVE"
NOTE: ONLY
AVAILABLE W/ "MAA"

NOTE:
1. PARTIAL PLANS SHOWN W/
ELEVATION "A". SEE SHEET
A-9 AND A-9b FOR
ADDITIONAL INFORMATION.
2. MATCH VENEER ACCORDING
TO SELECTED ELEVATION.

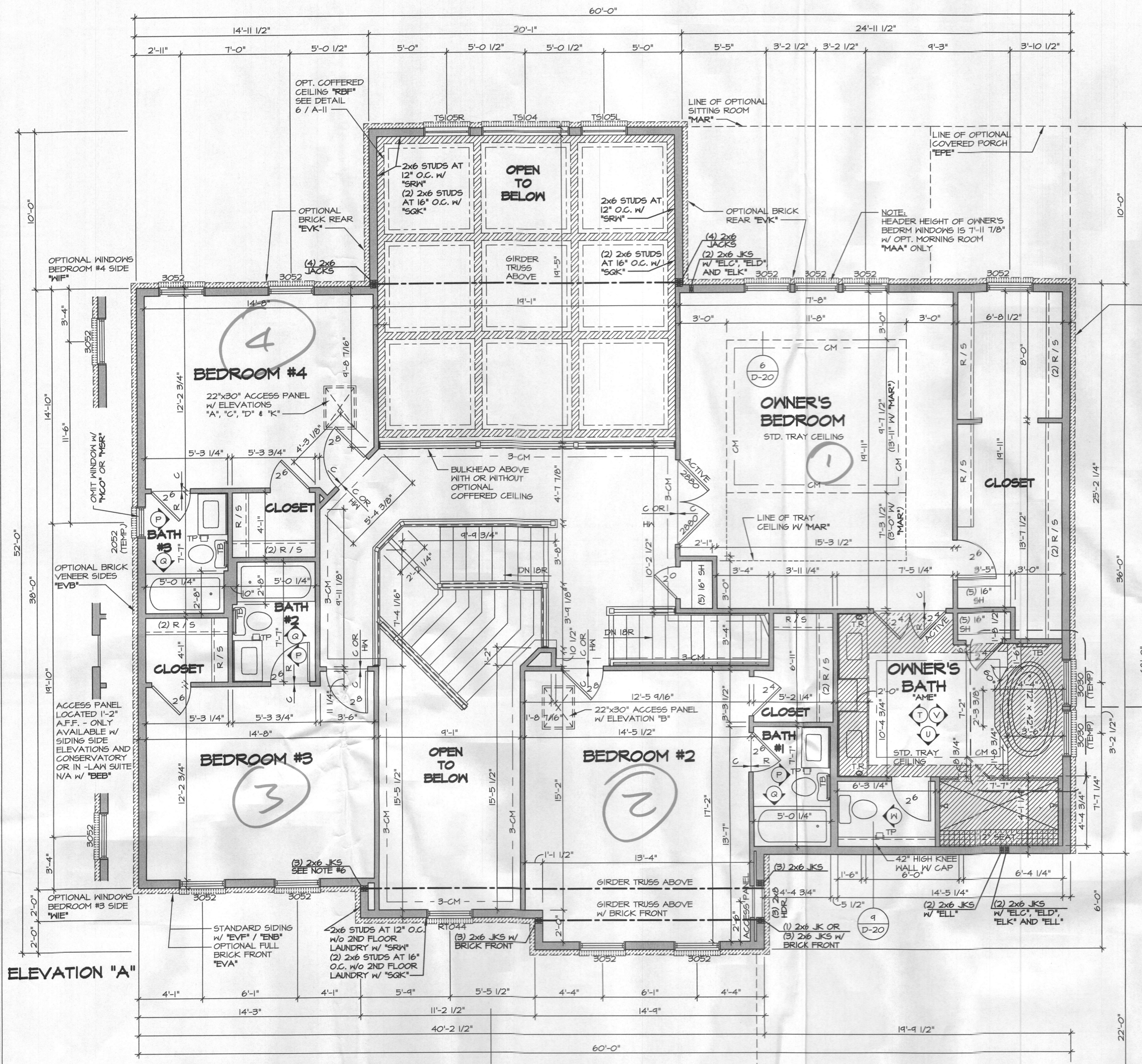
NOTES:
1. ALL HEADERS ARE (3) 2x6,
UNLESS OTHERWISE NOTED.
2. ALL EXTERIOR WALLS ARE 6"
UNLESS OTHERWISE NOTED.
ALL INTERIOR WALLS ARE 3 1/2"
UNLESS OTHERWISE NOTED.
3. HATCHED AREAS INDICATE
DROPPED CEILING.
4. ALL GASED OPENINGS AT 7'-11",
UNLESS OTHERWISE NOTED.
5. WASHER ALWAYS ON THE LEFT
PER PLAN OR REVERSE PLAN
(WHERE APPLICABLE).

NOTE:
SEE SHEET 5-6 FOR BRACED
WALL PANEL LOCATIONS

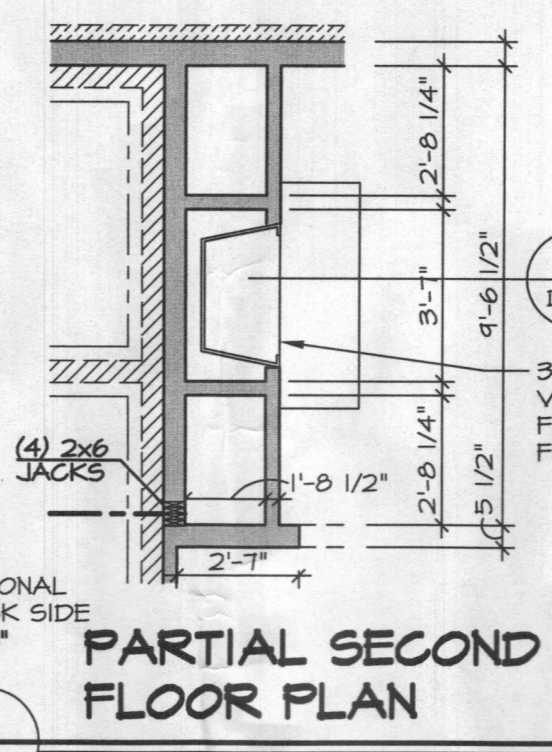
REV. NO.	DATE	REMARKS
10	10/21/14	CEL - ADDED DIMENSION FOR 9080 PATIO DOOR
11	11/24/14	CLS - ADDED ATTACHMENT DETAIL 4/ A-9b (PAR ID 28596)
12	11/25/14	LSA - ADIT REVISIONS
13	12/15/14	LSA - REVISED HANDRAIL IN REAR STAIR (PAR 28489)
14	3/18/15	DKS - REVISED WALL CABINET LAYOUT AND ADDED 6" TO WALL FOR CABINETS
15	7/16/15	AKS - MOVED RIGHT REAR HOSE BIB TO SIDE (94044)
16	9/16/15	CSB - FIELD ADIT REVISIONS
17	7/20/17	IKAD - ADJUST WALL LOCATION AT KITCHEN SINK LEDGE
18	10/15/14	CLS - REVISED HEADER HEIGHT OF CA1940-2 KITCHEN WINDOWS (PAR ID 28212)

NVR
NVR, Inc.
Architectural Services
21 Bye Court, Suite A
Frederick, MD 21702

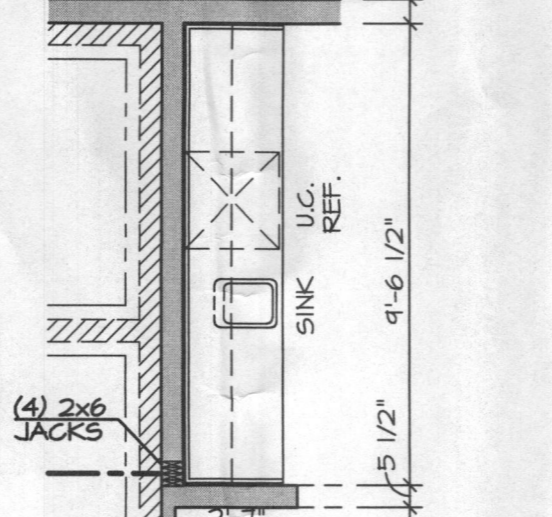
SHEET NO.	MODEL	SET NO.	DATE	OPTION
A-9e	CLIFTON PARK II	10500	1/4/13	MAA
DRAWING TITLE	DRAWN BY	VERSION 01		
FIRST FLOOR PARTIAL PLANS	A-JH			
OPTION DESCRIPTION				
MORNING ROOM				
SHEET NO.				
52				



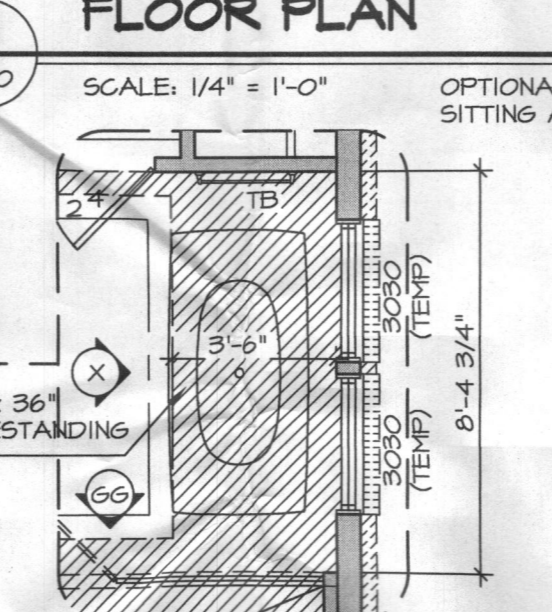
1 SECOND FLOOR PLAN
A-10 SCALE: 1/4" = 1'-0"



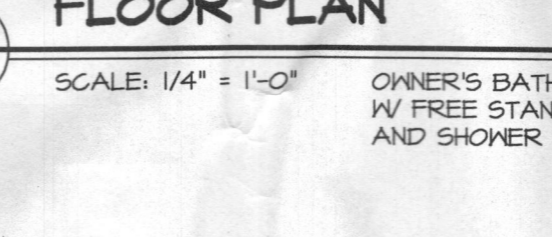
2 PARTIAL SECOND FLOOR PLAN
A-10 SCALE: 1/4" = 1'-0"



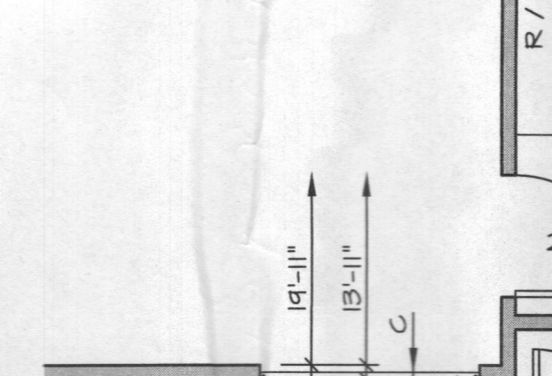
3 PARTIAL SECOND FLOOR PLAN
A-10 SCALE: 1/4" = 1'-0"



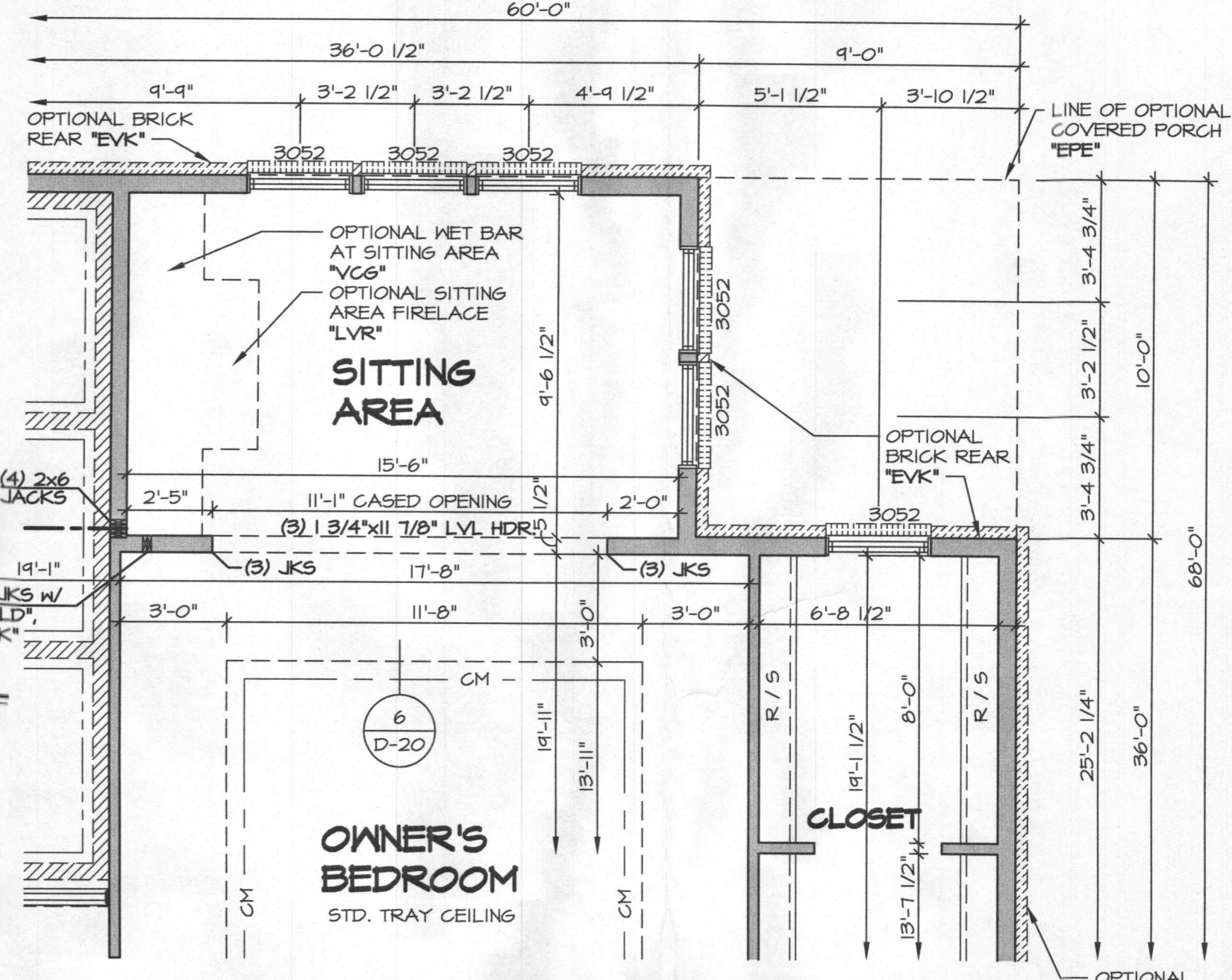
4 PARTIAL SECOND FLOOR PLAN
A-10 SCALE: 1/4" = 1'-0"



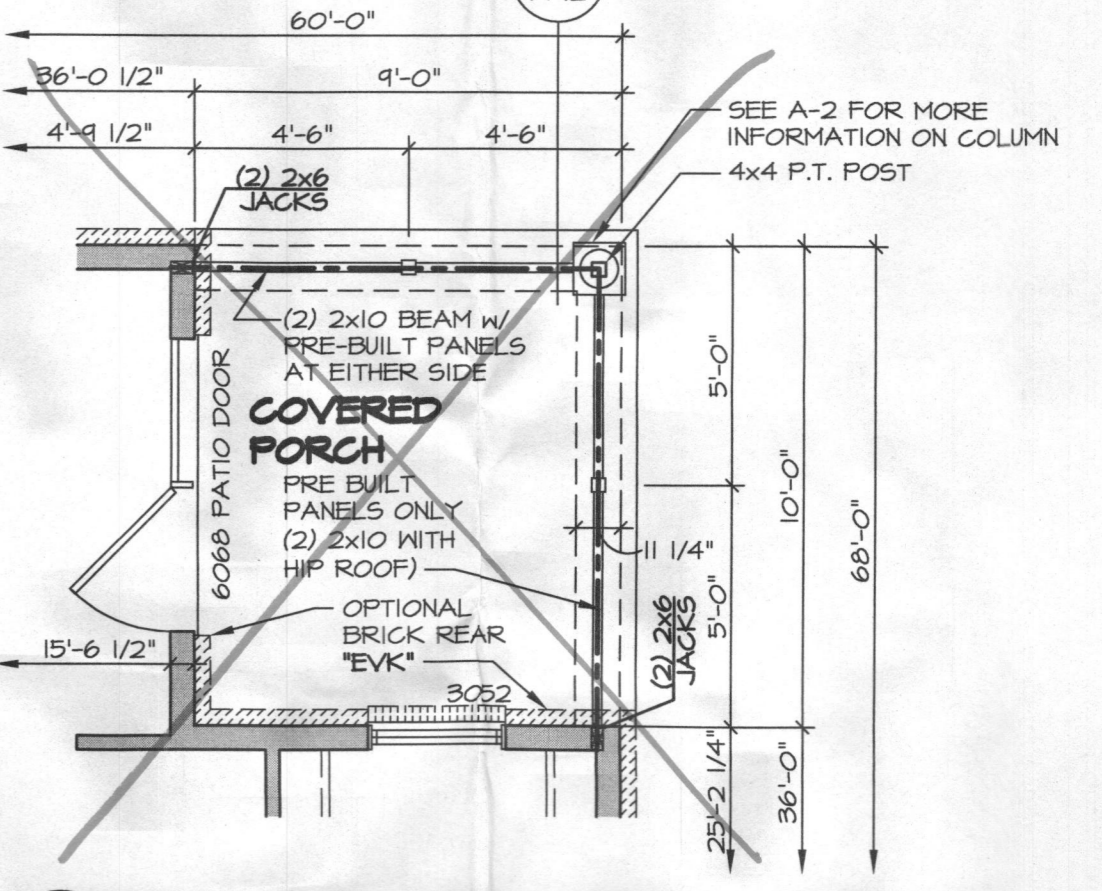
5 PARTIAL SECOND FLOOR PLAN
A-10 SCALE: 1/4" = 1'-0"



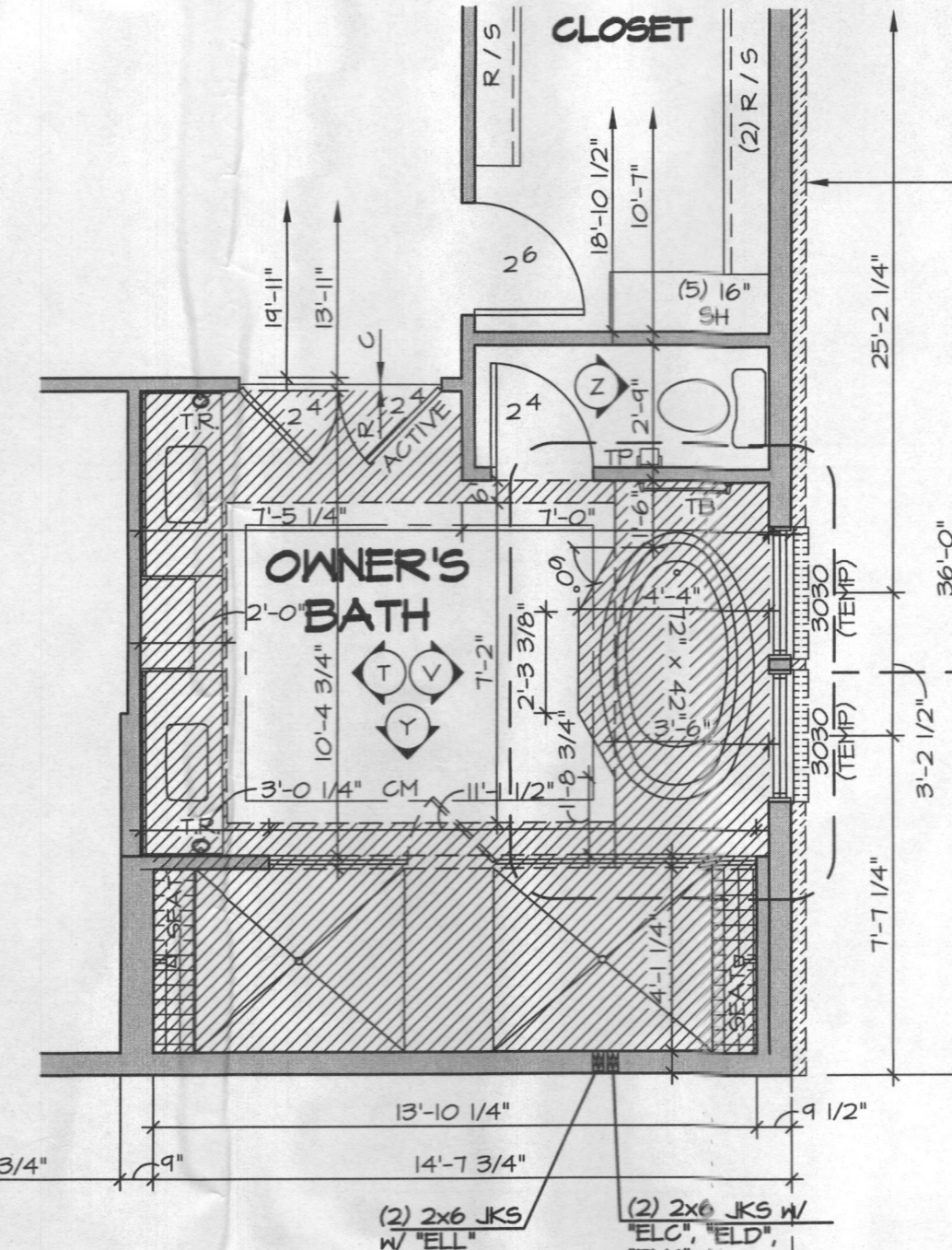
6 PARTIAL SECOND FLOOR PLAN
A-10 SCALE: 1/4" = 1'-0"



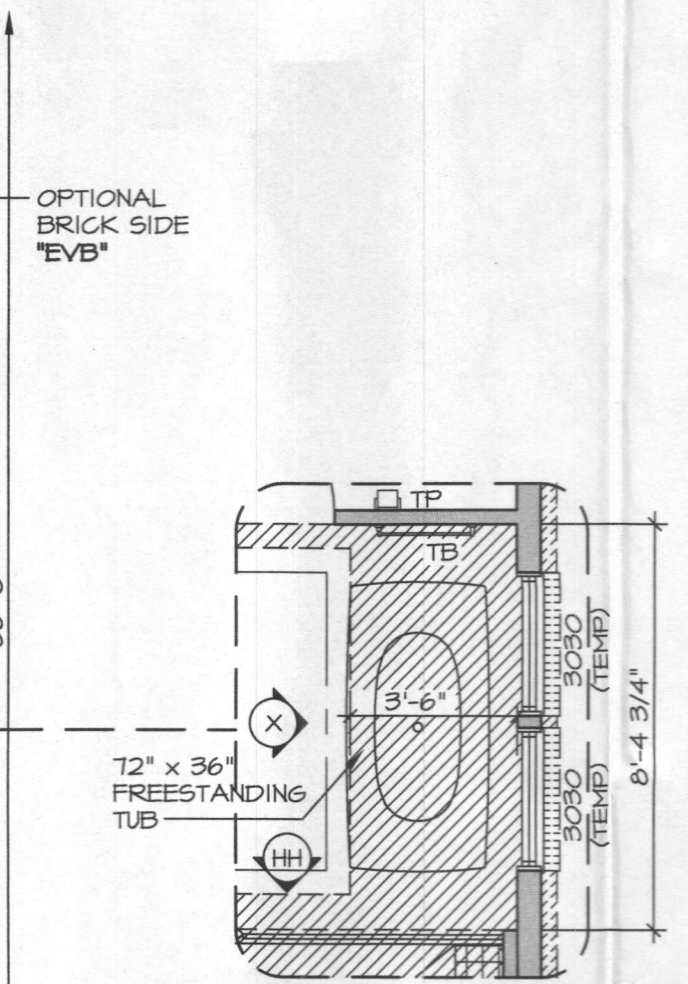
2 PARTIAL SECOND FLOOR PLAN
A-10 SCALE: 1/4" = 1'-0"



5 PARTIAL SECOND FLOOR PLAN
A-10 SCALE: 1/4" = 1'-0"



6 PARTIAL SECOND FLOOR PLAN
A-10 SCALE: 1/4" = 1'-0"



8 PARTIAL SECOND FLOOR PLAN
A-10 SCALE: 1/4" = 1'-0"

- NOTES:**
1. ALL HEADERS ARE (B) 2x6, UNLESS OTHERWISE NOTED.
 2. ALL EXTERIOR WALLS ARE 6" UNLESS OTHERWISE NOTED.
 3. ALL INTERIOR WALLS ARE 3 1/2" UNLESS OTHERWISE NOTED.
 4. HATCHED AREAS INDICATE DROPPED CEILINGS.
 5. ALL CASED OPENINGS AT 7'-11", UNLESS OTHERWISE NOTED.
 6. WASHER ALWAYS ON THE LEFT PER PLAN OR REVERSE PLAN (WHERE APPLICABLE).
 7. JACKS MUST EXTEND THROUGH TOP PLATES OF WALL TO BEAR DIRECTLY ON BOTTOM CHORD OF GIRDER TRUSS AT LOCATIONS NOTED.

NOTE:
SEE SHEET 5-7 FOR BRACED WALL PANEL LOCATIONS

FOR SEPTIC DESIGN:
4 BEDROOMS
THIS FLOOR

REV. NO.	DATE	REMARKS
1	2/21/11	KAD - PROJECT #195 - ADDED COUNTERTOP LAYOUTS FOR OWNERS BATH
2	10/14/14	CL5 - REVISED TRAY CEILING W/ "MAR" TO MATCH ROOF DRAWING (PAR 12/21/11)
3	11/25/14	56A - ADPT REVISIONS
4	1/6/15	JEA - REVISED HANDRAIL IN REAR STAIR (PAR 2/19/15)
5	1/22/15	JEA - REVISED BALUNDAIR IN REAR STAIR (PAR 1/30/15)
6	02/12/15	MBT - REVISED REAR PORCH COLUMN NOTES
7	02/12/15	DLR - REV. STAIR RISER PLATFORM TO KINDER TO ACCOMMODATE (PAR 3/30/15)
8	2/24/16	DLR - ADDED TOILET RINGS OWNERS BATH VANITY (PAR 3/17/16)
9	9/26/16	BBB - MODIFIED HEADER HEIGHT OF OWNERS BEDROOM WINDOWS (PAR 4/11/16)

NVR
NVR, Inc.
Architectural Services
21 Bye Court, Suite A
Frederick, MD 21702

MODEL	CLIFTON PARK II
SHEET NO.	A-10
VERSION	OPTION
DRAWN BY	A-JH
DATE	12/21/12
OPTION DESCRIPTION	
SHEET NO.	54

