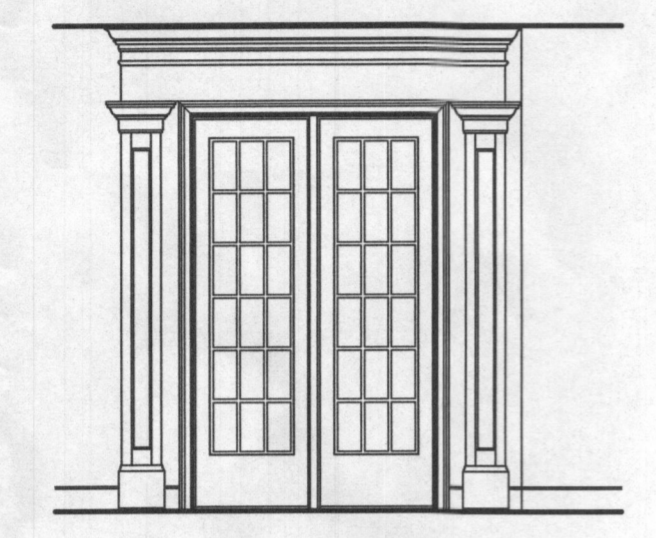
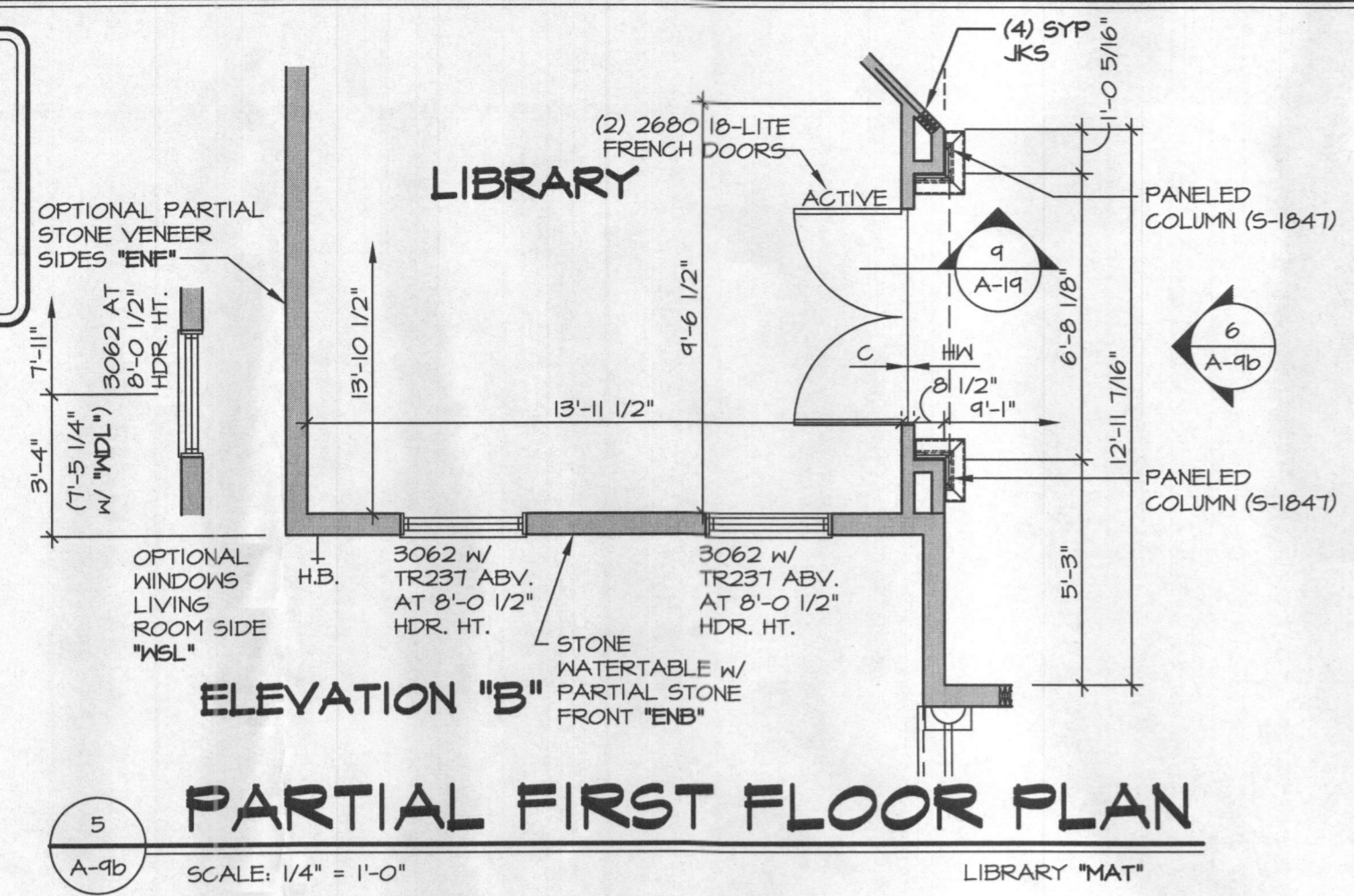
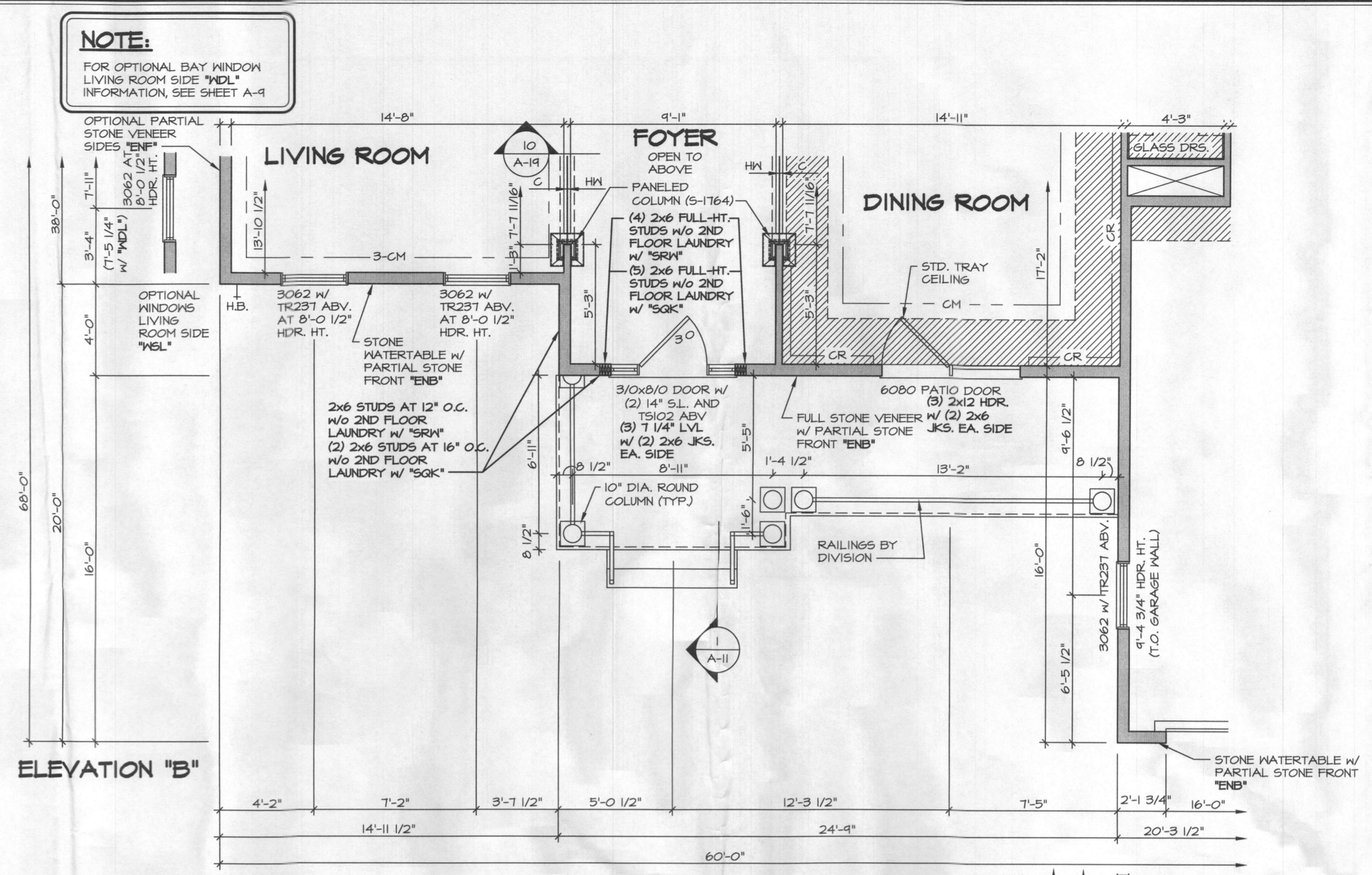


NOTE:
FOR OPTIONAL BAY WINDOW LIVING ROOM SIDE "MDL" INFORMATION, SEE SHEET A-4
FOR OPTIONAL BOOKCASE "VST" INFORMATION, SEE SHEET A-9C

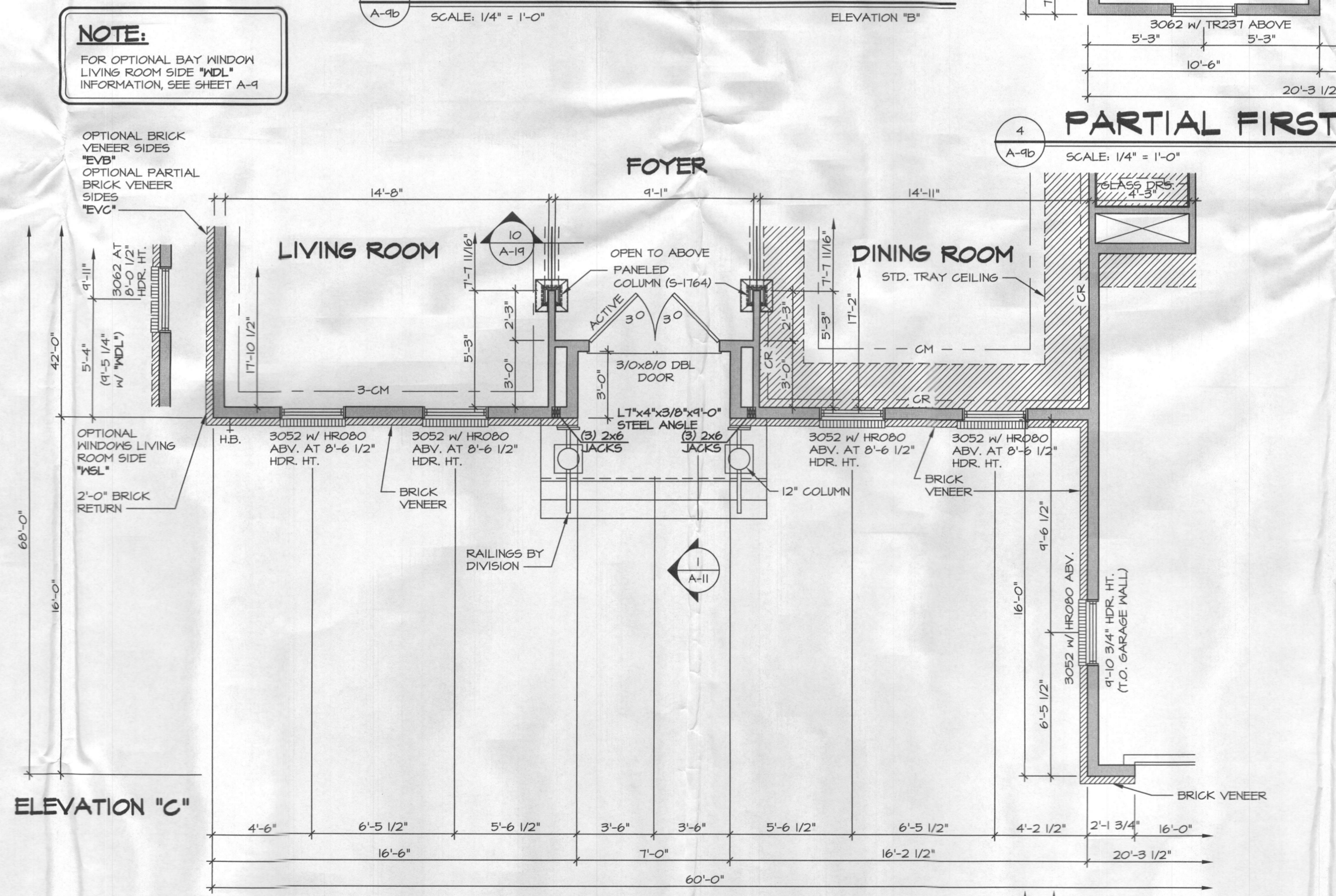


PARTIAL FIRST FLOOR PLAN
SCALE: 1/4" = 1'-0"
LIBRARY "MAT"

NOTE:
FOR OPTIONAL BAY WINDOW LIVING ROOM SIDE "MDL" INFORMATION, SEE SHEET A-4



NOTE:
FOR OPTIONAL BAY WINDOW LIVING ROOM SIDE "MDL" INFORMATION, SEE SHEET A-4

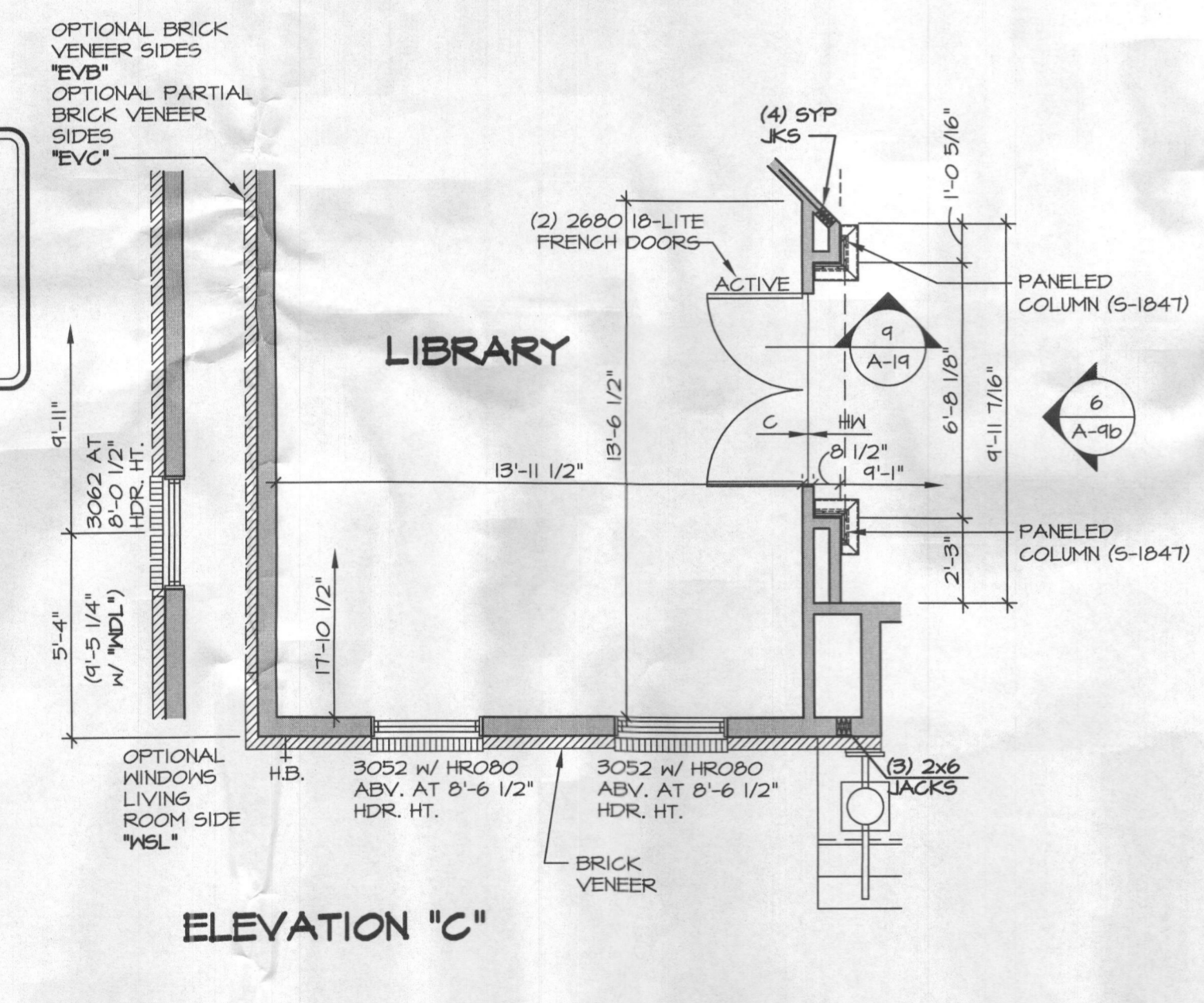


NOTE:
FOR ADDITIONAL GARAGE AND FIRST FLOOR INFORMATION, SEE SHEET A-4

- NOTES:**
- ALL HEADERS ARE (3) 2x6, UNLESS OTHERWISE NOTED.
 - ALL EXTERIOR WALLS ARE 6" UNLESS OTHERWISE NOTED.
 - ALL INTERIOR WALLS ARE 3 1/2" UNLESS OTHERWISE NOTED.
 - HATCHED AREAS INDICATE DROPPED CEILINGS.
 - ALL CASED OPENINGS AT 7'-11", UNLESS OTHERWISE NOTED.
 - WASHER ALWAYS ON THE LEFT PER PLAN OR REVERSE PLAN (WHERE APPLICABLE).

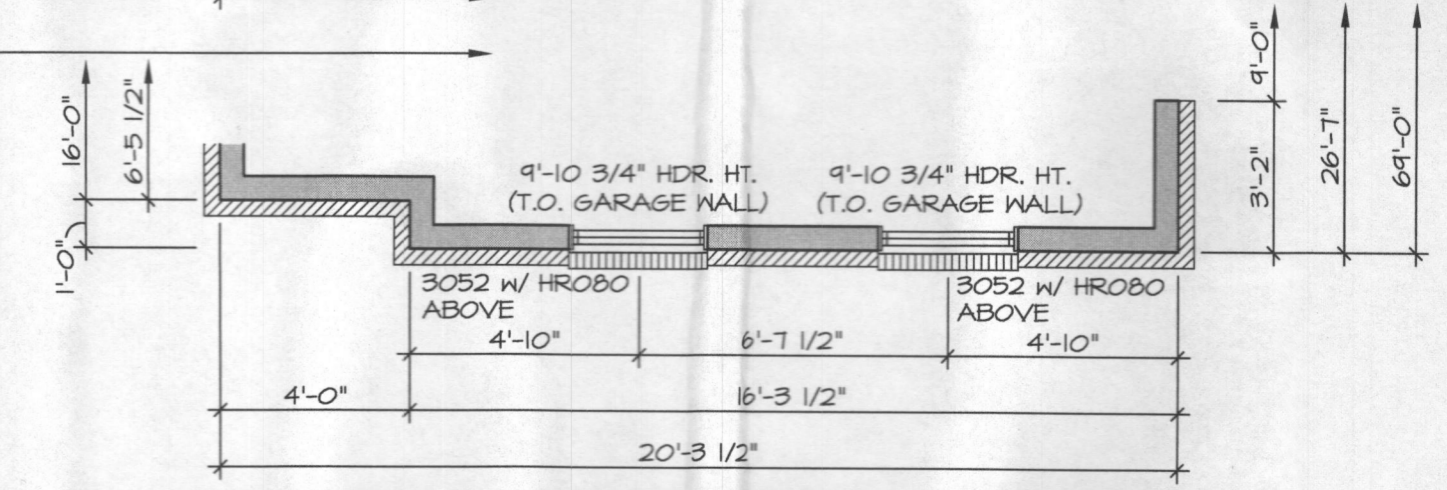
NOTE:
SEE SHEET 5-6 FOR BRACED WALL PANEL LOCATIONS

NOTE:
FOR OPTIONAL BAY WINDOW LIVING ROOM SIDE "MDL" INFORMATION, SEE SHEET A-4
FOR OPTIONAL BOOKCASE "VST" INFORMATION, SEE SHEET A-9C



PARTIAL FIRST FLOOR PLAN
SCALE: 1/4" = 1'-0"
LIBRARY "MAT"

PARTIAL FIRST FLOOR PLAN
SCALE: 1/4" = 1'-0"
ELEVATION "C"

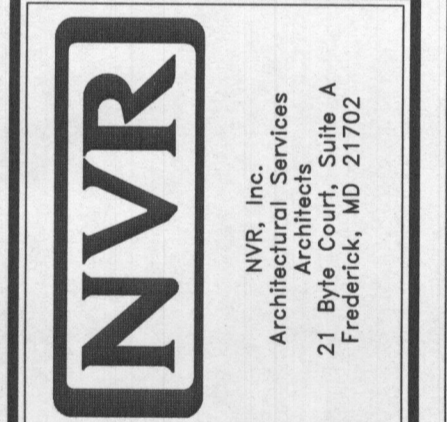


PARTIAL FIRST FLOOR PLAN
SCALE: 1/4" = 1'-0"
TWO CAR SIDE ENTRY GARAGE "600"

REV. NO.	DATE	REMARKS
1	3/28/14	A.J.H. - ADJIT RIV. 5X 001
2	8/6/15	ARS - REVISED CHASE BEHIND BUTLERS PANTRY TO BE 3" DEEFER (B43929)
3	12/7/15	585 - PAR #96391 - REVISED GARAGE SLAB HEIGHT

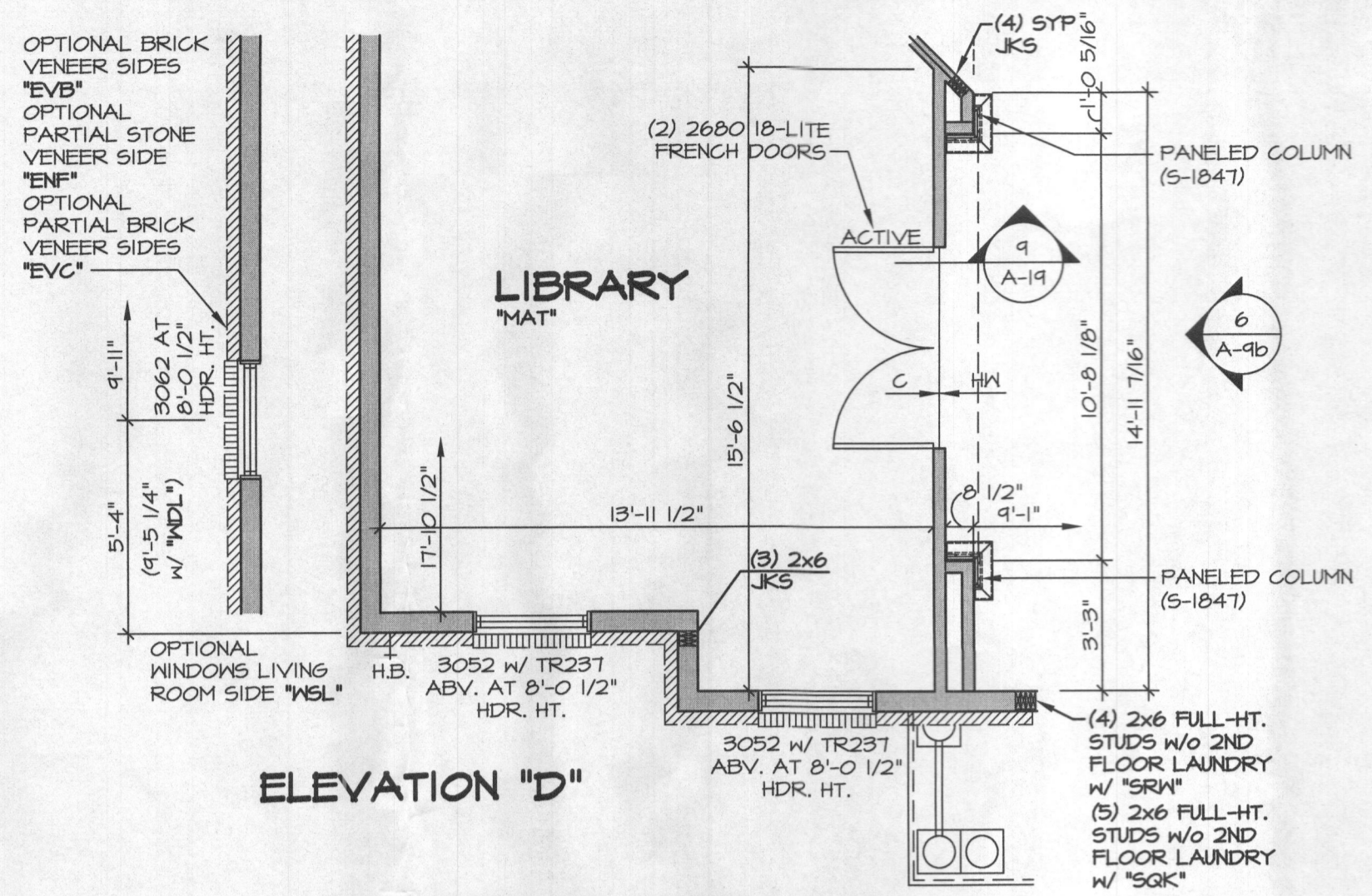
SET NO. 10500	VERSION C1	DATE: 12/2/12
MODEL CLIFTON PARK II	DRAWN BY A.J.H.	OPTION E.L.B.
DRAWING TITLE FIRST FLOOR PARTIAL PLANS		ELC
A-9b		

SHEET NO. A-9b	OPTION DESCRIPTION ELEVATION "B" ELEVATION "C"	48
----------------	--	----

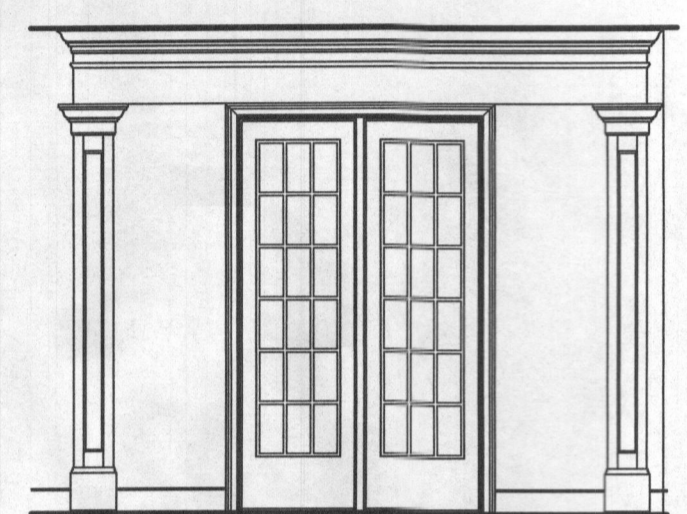


Model: CLIFTON PARK II
Drawing Title: FIRST FLOOR PARTIAL PLANS
Sheet No: A-9b
Option Description: ELEVATION "B" ELEVATION "C"
Sheet Count: 48

NOTE:
FOR OPTIONAL BAY WINDOW LIVING ROOM SIDE "NDL" INFORMATION, SEE SHEET A-4
FOR OPTIONAL BOOKCASE "VST" INFORMATION, SEE SHEET A-9C

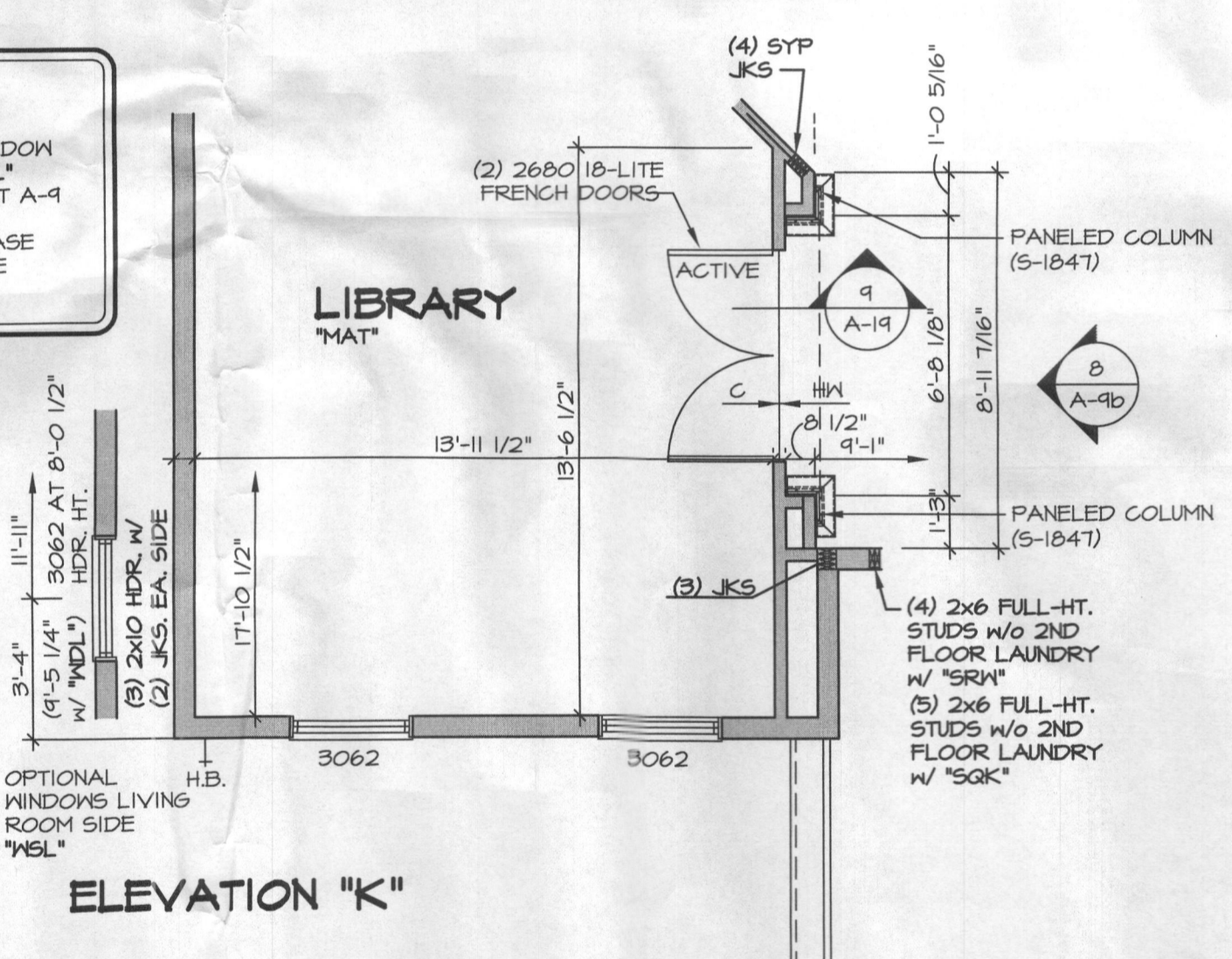


ELEVATION "D"
PARTIAL FIRST FLOOR PLAN
SCALE: 1/4" = 1'-0"
LIBRARY "MAT"

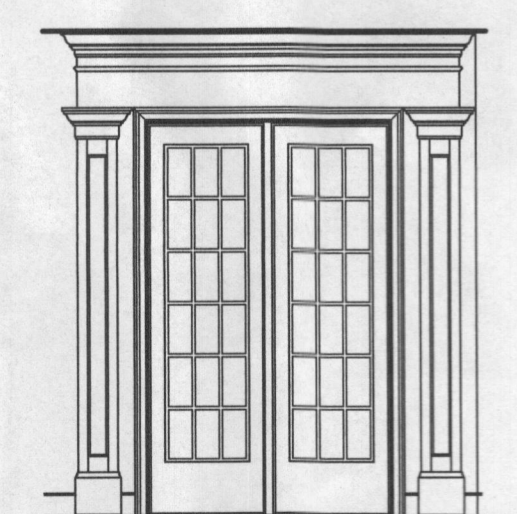


PARTIAL ELEVATION
SCALE: 1/4" = 1'-0"
LIBRARY "MAT" ELEVATION "D" "ELD"

NOTE:
FOR OPTIONAL BAY WINDOW LIVING ROOM SIDE "NDL" INFORMATION, SEE SHEET A-4
FOR OPTIONAL BOOKCASE "VST" INFORMATION, SEE SHEET A-9C

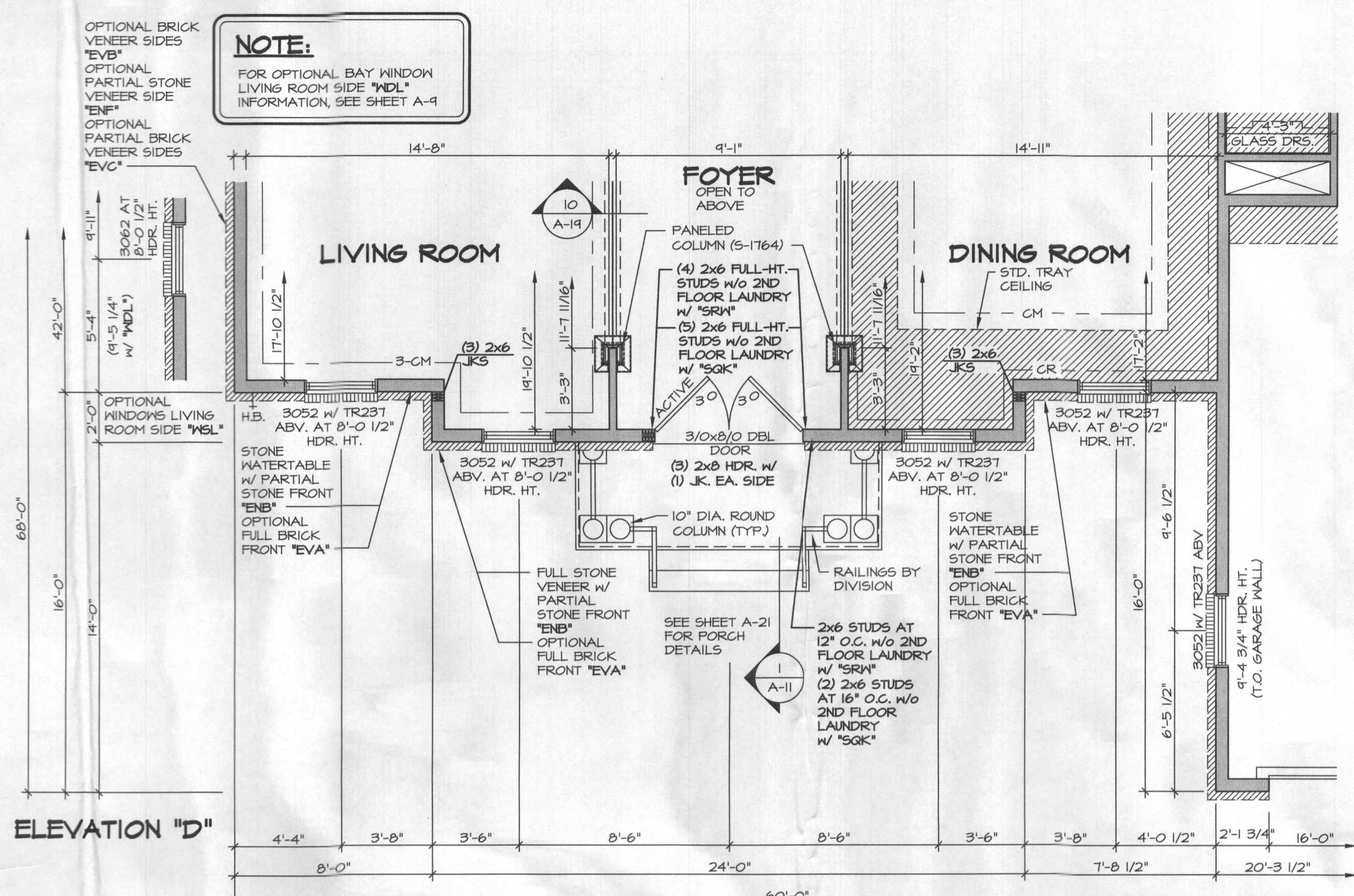


ELEVATION "K"
PARTIAL FIRST FLOOR PLAN
SCALE: 1/4" = 1'-0"
LIBRARY "MAT"

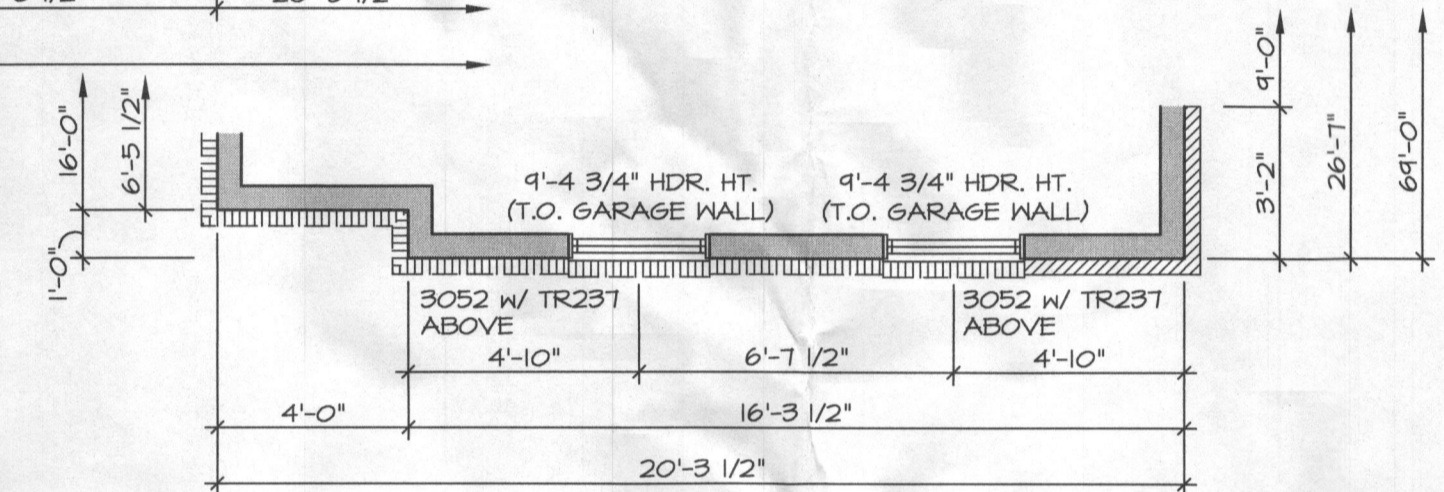


PARTIAL ELEVATION
SCALE: 1/4" = 1'-0"
LIBRARY "MAT" ELEVATION "K" "ELK"

NOTE:
FOR OPTIONAL BAY WINDOW LIVING ROOM SIDE "NDL" INFORMATION, SEE SHEET A-4

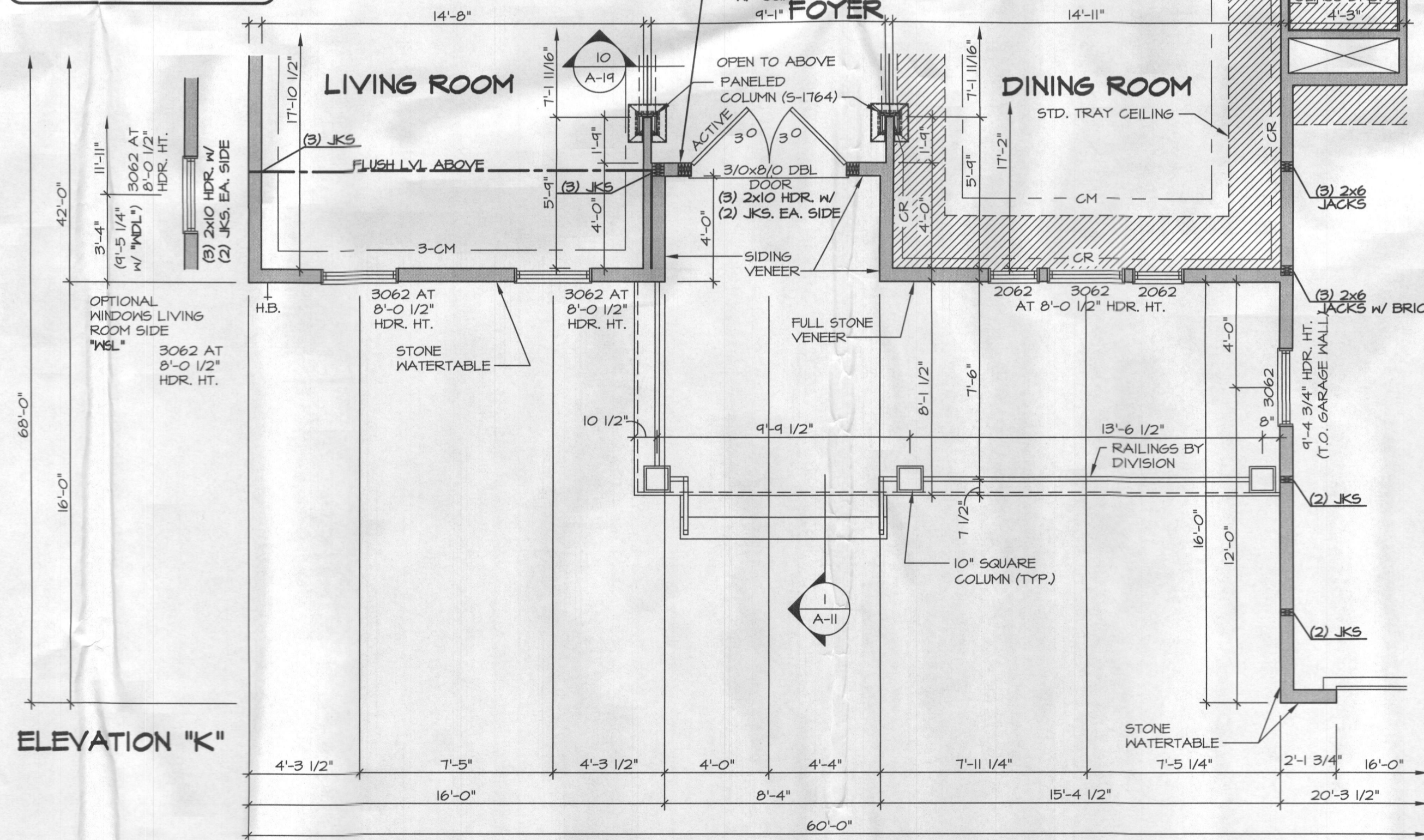


PARTIAL FIRST FLOOR PLAN
SCALE: 1/4" = 1'-0"
ELEVATION "D"

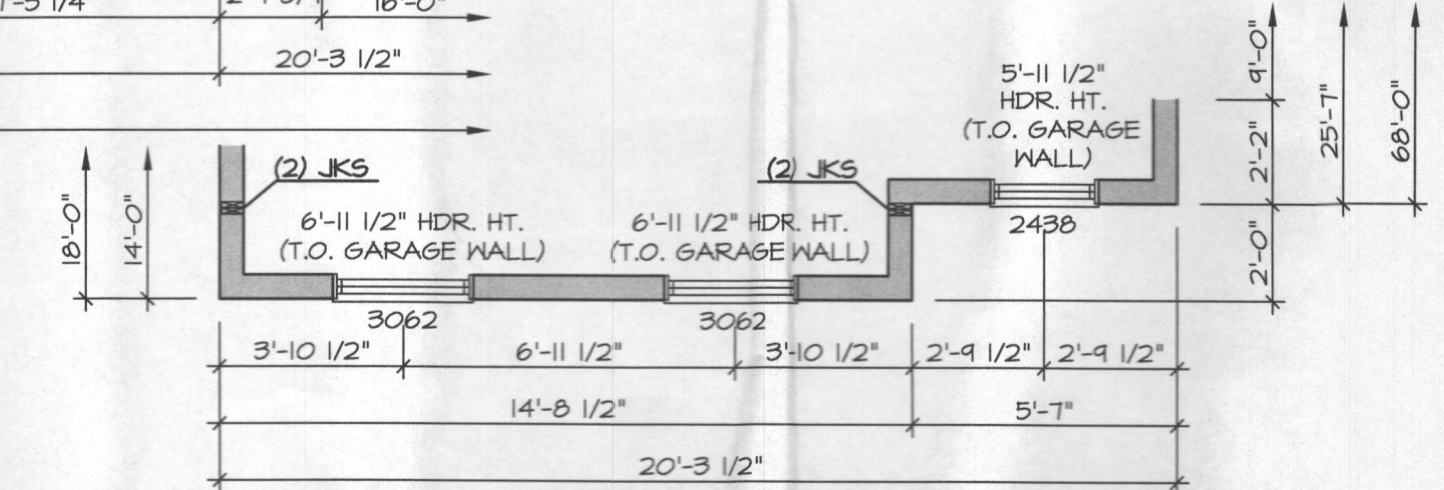


PARTIAL FIRST FLOOR PLAN
SCALE: 1/4" = 1'-0"
TWO CAR SIDE ENTRY GARAGE "GCC"

NOTE:
FOR OPTIONAL BAY WINDOW LIVING ROOM SIDE "NDL" INFORMATION, SEE SHEET A-4



PARTIAL FIRST FLOOR PLAN
SCALE: 1/4" = 1'-0"
ELEVATION "K"



PARTIAL FIRST FLOOR PLAN
SCALE: 1/4" = 1'-0"
TWO CAR SIDE ENTRY GARAGE "GCC"

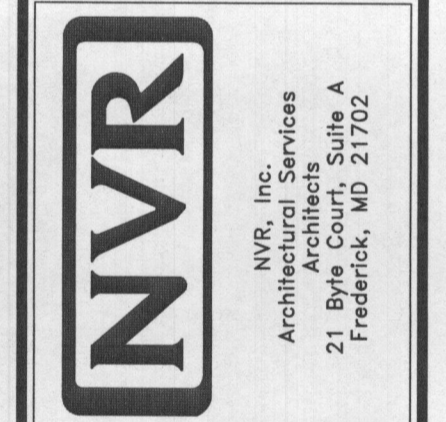
NOTE:
FOR ADDITIONAL GARAGE AND FIRST FLOOR INFORMATION, SEE SHEET A-4

- NOTES:**
1. ALL HEADERS ARE (3) 2x6, UNLESS OTHERWISE NOTED.
 2. ALL EXTERIOR WALLS ARE 6" UNLESS OTHERWISE NOTED.
 3. ALL INTERIOR WALLS ARE 3 1/2" UNLESS OTHERWISE NOTED.
 4. ALL CASED OPENINGS AT 7'-11", UNLESS OTHERWISE NOTED.
 5. WASHES ALWAYS ON THE LEFT PER PLAN OR REVERSE PLAN (WHERE APPLICABLE).

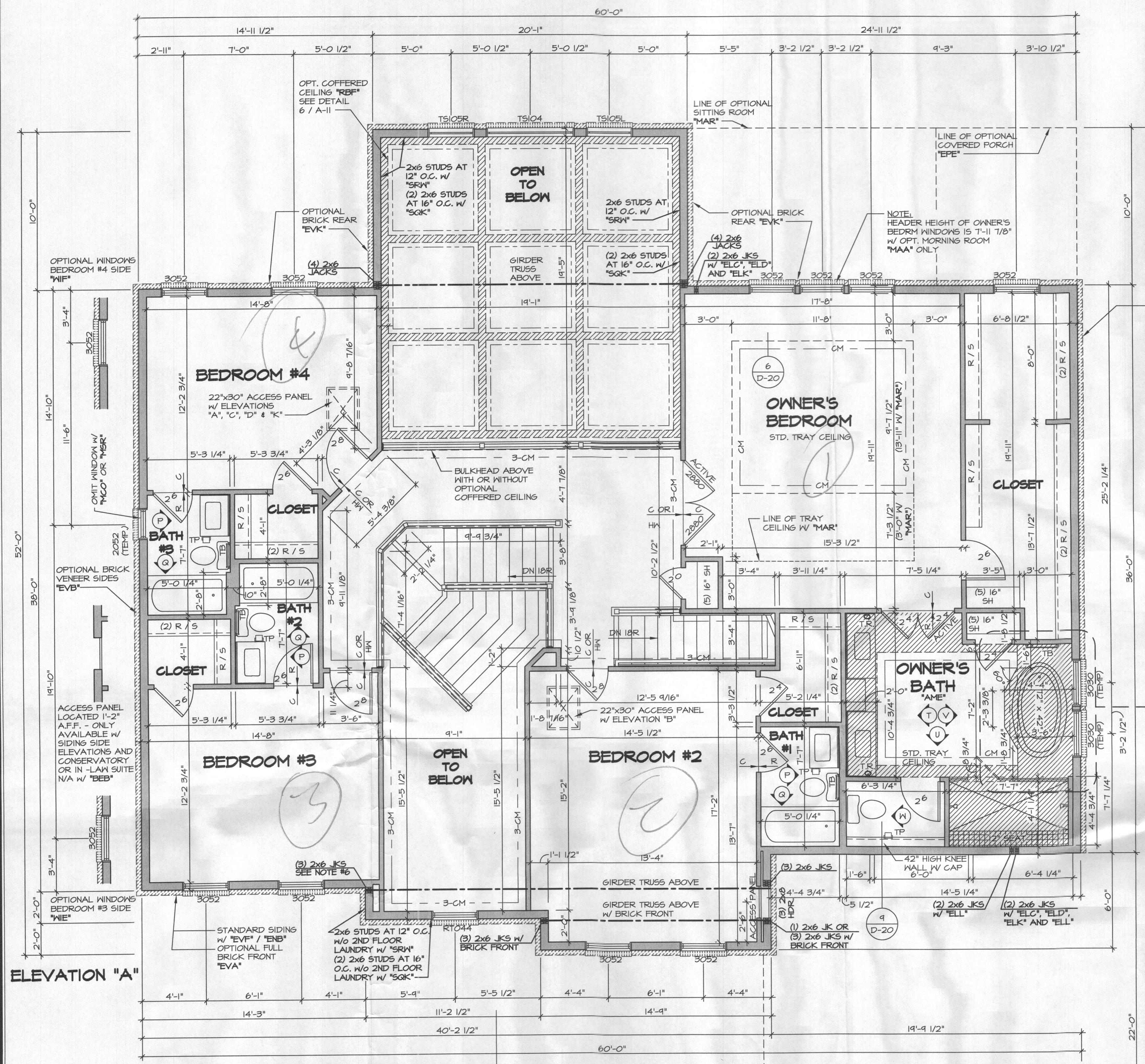
NOTE:
SEE SHEET S-6 FOR BRACED WALL PANEL LOCATIONS

REV. NO.	DATE	REMARKS
10	12/7/15	5855 - PAR #262804 - REVISED GARAGE SLAB HEIGHT
11	1/26/16	J65 - ADDED VENEER NOTES TO ELK (PAR #37939)
12	4/13/16	J65 - ADDED JACKS FOR ELK GARAGE GIRDS (PAR #41603)
4	6/26/14	JLR - REVISED ELEVATION "D" PORCH
5	10/21/14	CEL - ADDED JACKS AT ELK PORCH BEAM
6	10/21/14	CEL - REVISED WINDOW LOCATION FOR "ELD" LEFT SIDE WINDOW "NSL" (PAR. 9012R)
7	5/7/15	SKK - ADDED ACTIVE TO LEFT FRONT DOOR ELEVATION B PAR 32054
8	6/16/15	ABS - REVISED CHASE BEHIND BUTLERS PANTRY TO BE 3" DEEPER (PAR 49393)
9	9/16/15	CSB - FIELD AUDIT REVISIONS

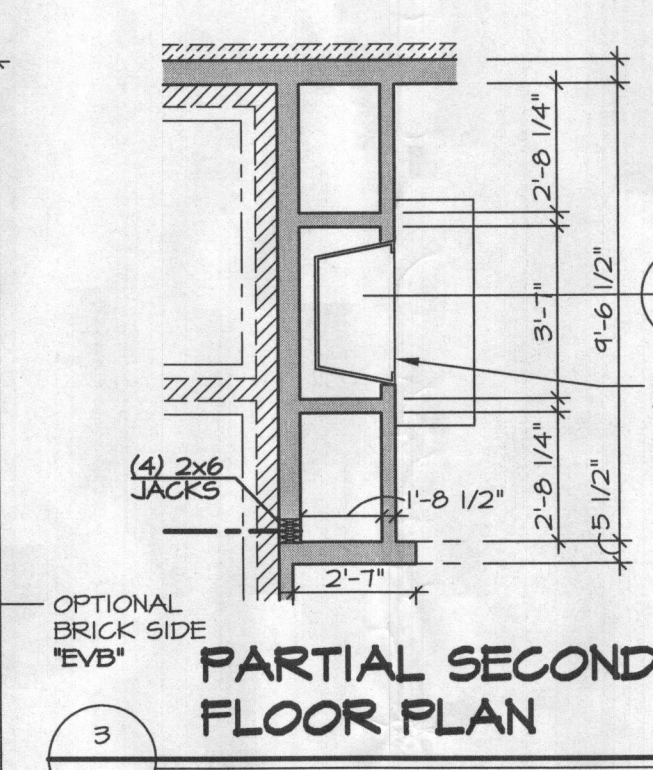
NVR, Inc., owner, expressly reserves its common law copyright and other rights in these plans. These plans are not to be used, copied, or reproduced in any way without the prior written consent of NVR, Inc.



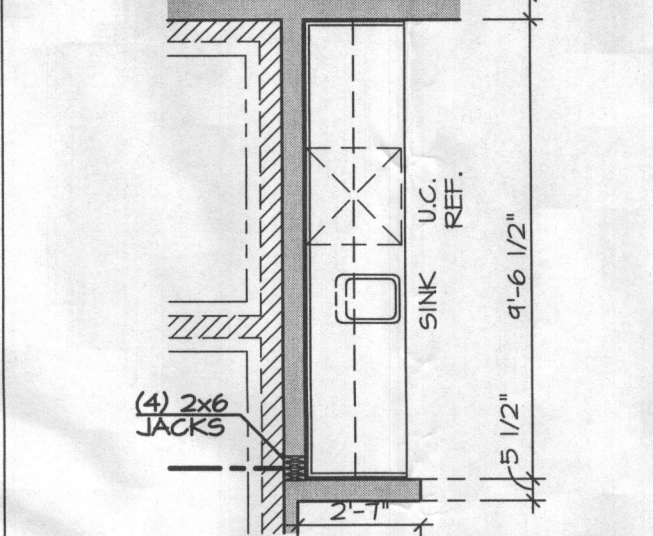
SHEET NO.	MODEL	SET NO.	DATE	OPTION
A-9b	CLIFTON PARK II	10500	12/2/12	ELD
	DRAWING TITLE	VERSION 01	DRAWN BY	ELK
	FIRST FLOOR PARTIAL PLANS		A-JH	
	ELEVATION "D"			
	ELEVATION "K"			
	49.1			



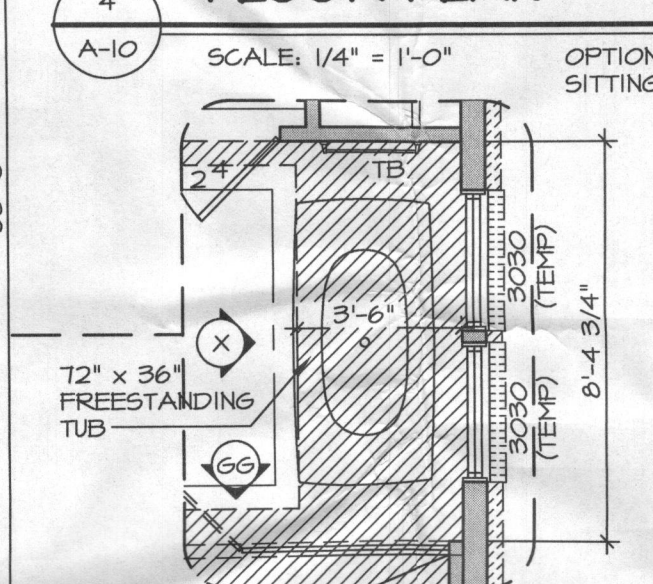
1 SECOND FLOOR PLAN
SCALE: 1/4" = 1'-0"



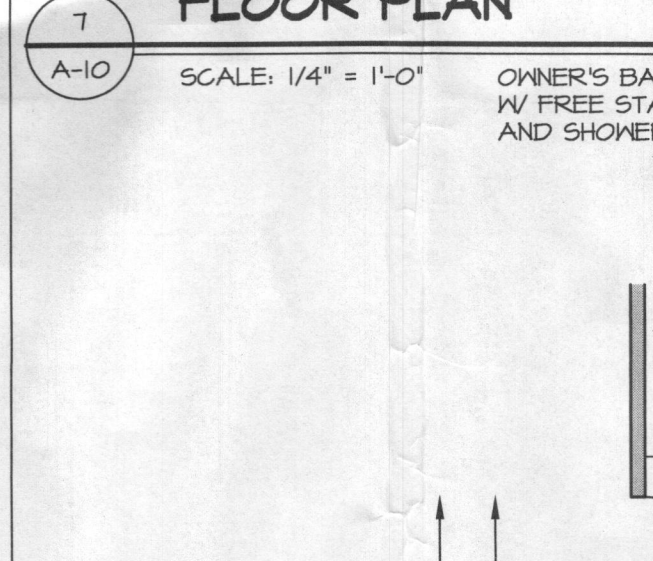
3 PARTIAL SECOND FLOOR PLAN
SCALE: 1/4" = 1'-0"



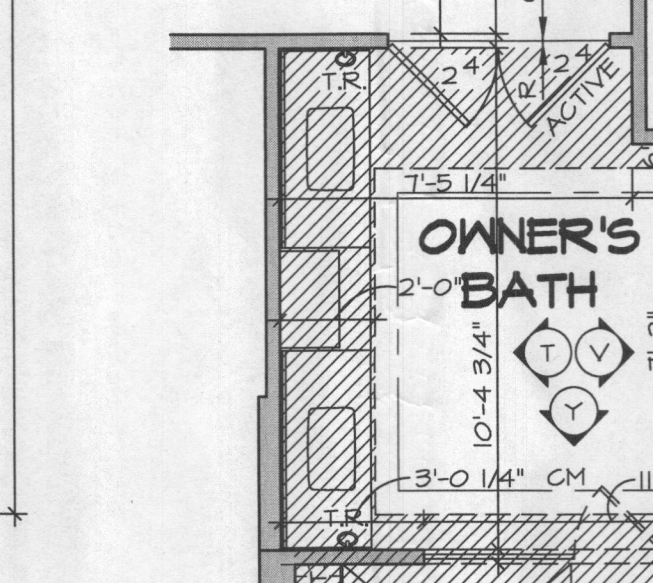
4 PARTIAL SECOND FLOOR PLAN
SCALE: 1/4" = 1'-0"



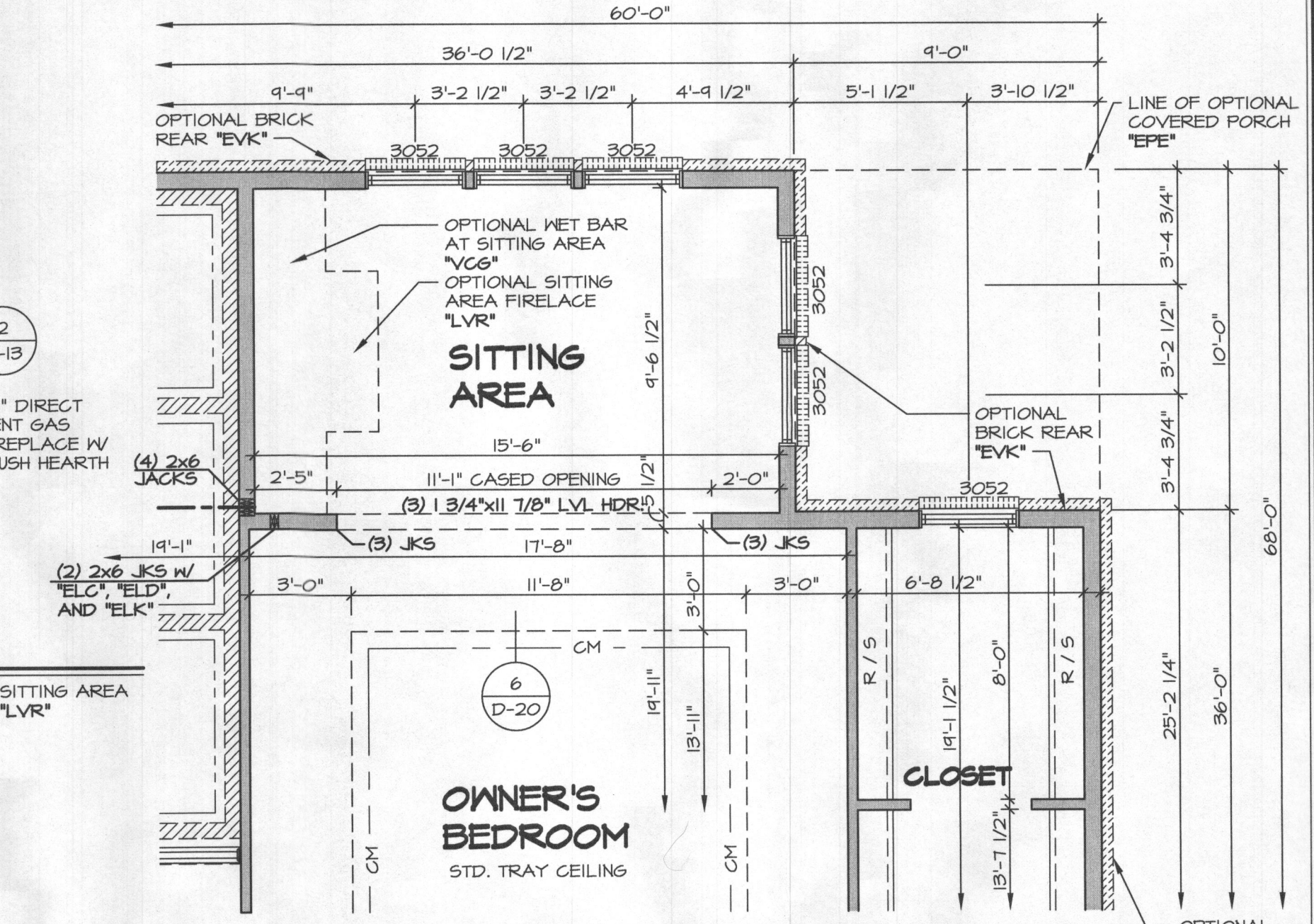
7 PARTIAL SECOND FLOOR PLAN
SCALE: 1/4" = 1'-0"



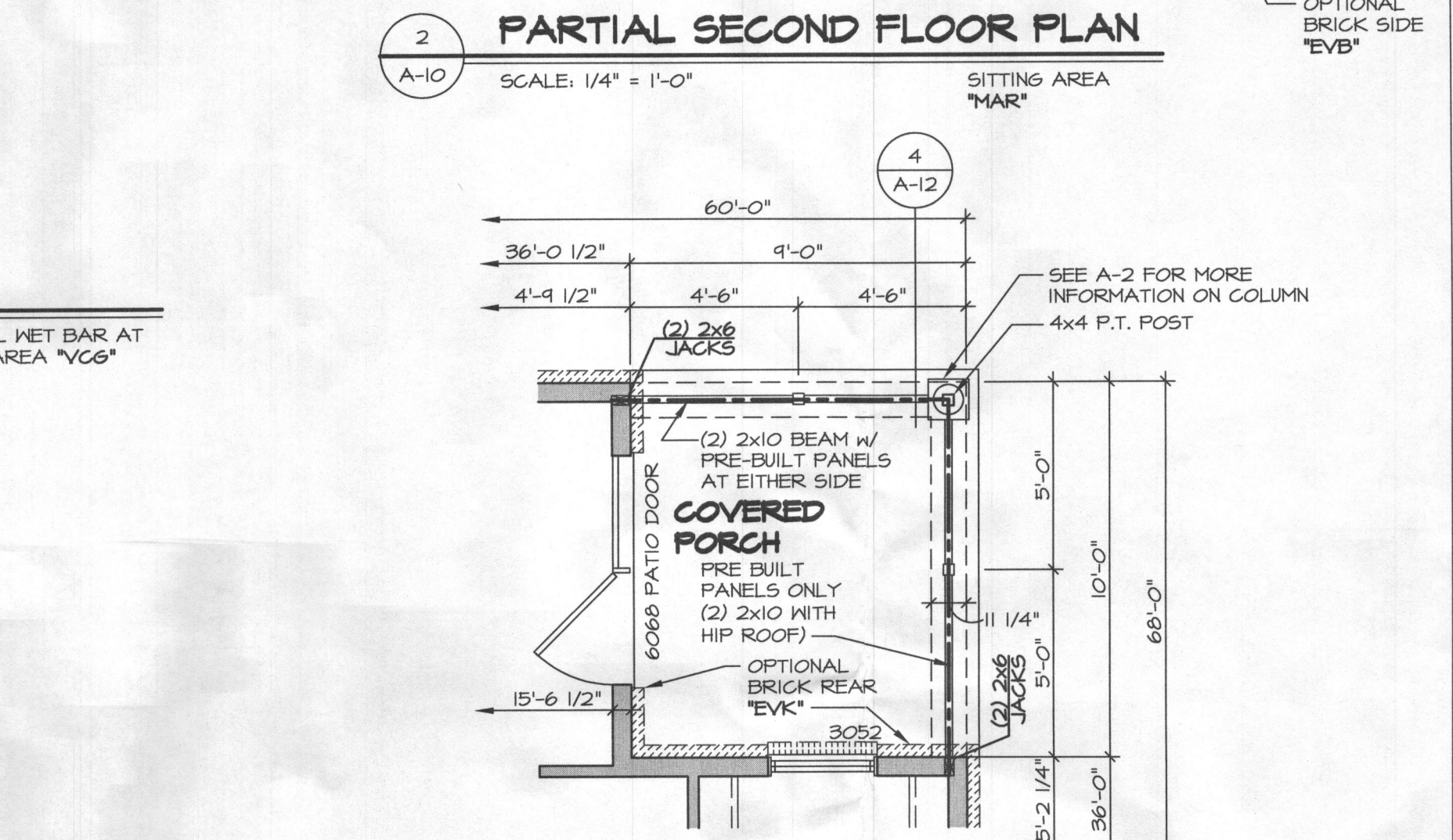
8 PARTIAL SECOND FLOOR PLAN
SCALE: 1/4" = 1'-0"



6 PARTIAL SECOND FLOOR PLAN
SCALE: 1/4" = 1'-0"



2 PARTIAL SECOND FLOOR PLAN
SCALE: 1/4" = 1'-0"



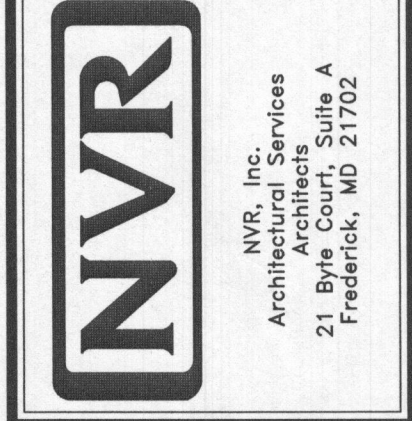
5 PARTIAL SECOND FLOOR PLAN
SCALE: 1/4" = 1'-0"

- NOTES:**
- ALL HEADERS ARE (3) 2x6, UNLESS OTHERWISE NOTED.
 - ALL EXTERIOR WALLS ARE 6" UNLESS OTHERWISE NOTED. ALL INTERIOR WALLS ARE 3/2" UNLESS OTHERWISE NOTED.
 - HATCHED AREAS INDICATE DROPPED CEILINGS.
 - ALL CASED OPENINGS AT T-11, UNLESS OTHERWISE NOTED.
 - WASHER ALWAYS ON THE LEFT PER PLAN OR REVERSE PLAN (WHERE APPLICABLE).
 - JACKS MUST EXTEND THROUGH TOP PLATES OF WALL TO BEAR DIRECTLY ON BOTTOM CHORD OF GIRDER TRUSS AT LOCATIONS NOTED.

NOTE:
SEE SHEET 5-1 FOR BRACED WALL PANEL LOCATIONS

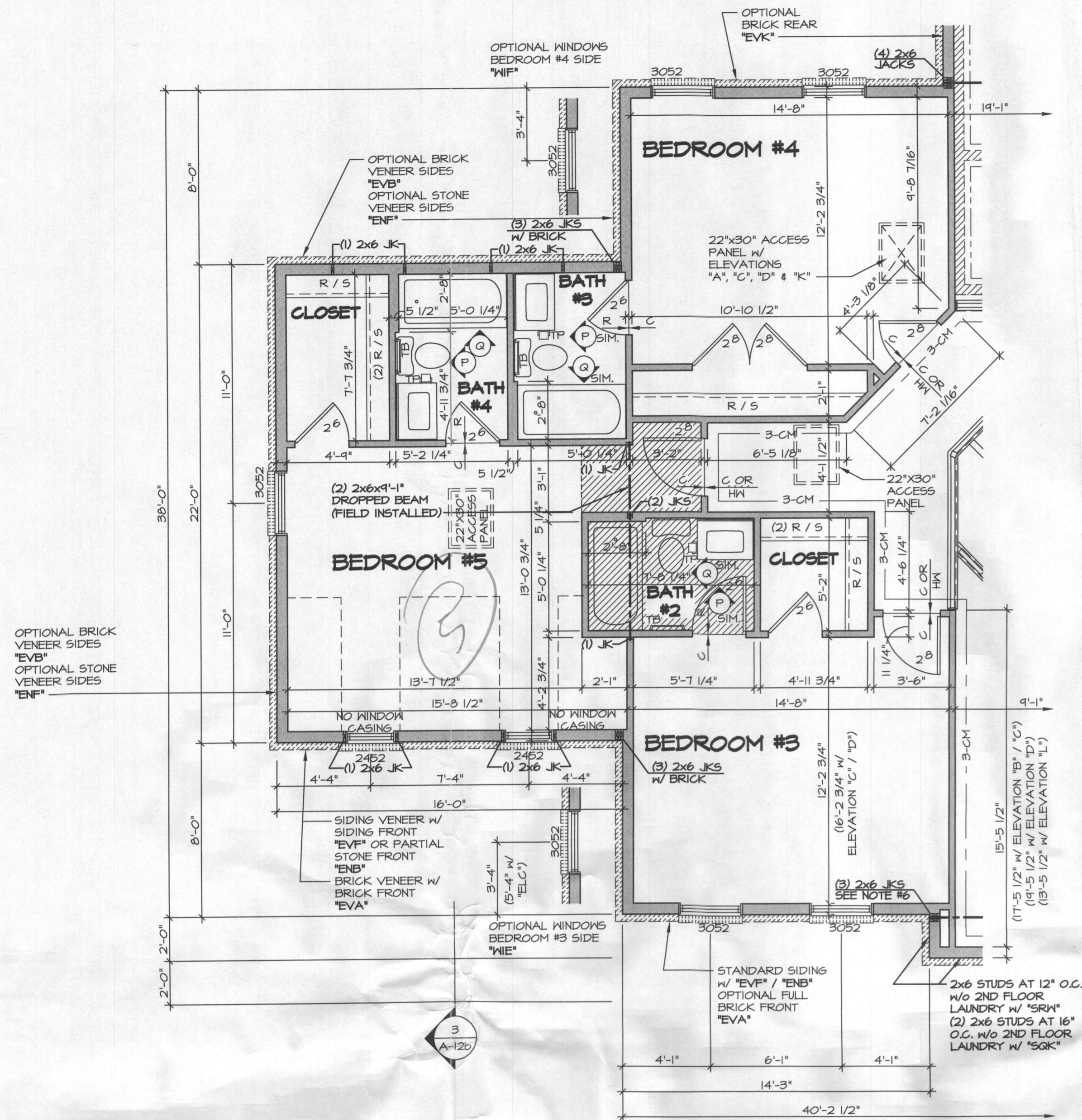
REV. NO.	DATE	REMARKS
1	2/21/17	KAD - PROJECT REVISIONS - ADDED CENTERCUT LAYOUTS FOR OWNER'S BATH
2	07/14/14	GLS - REVISED TRAY CEILING W/ MAR' TO MATCH ROOF DRAWING (PAR 10 2821)
3	11/29/14	SEA - ADJUST REVISIONS
4	10/15/15	LEA - REVISED HANDRAIL IN REAR STAIR (PAR 2488B)
5	02/12/15	LEA - REVISED BULKHEAD NOTE AT OVERLOOK INTO FAMILY ROOM (PAR 4504TD)
6	02/22/15	LEA - REVISED REAR PORCH NOTES
7	02/22/15	DLR - REV. STAIR RISER PLATFORM TO ACCOMMODATE (PAR 3352S)
8	2/24/16	DLR - ADDED TOWER RINGS OWNER'S BATH VANITY (PAR 3119F)
9	4/26/16	BBB - MODIFIED HEADER HEIGHT OF OWNER'S BEDROOM WINDOWS (PAR 411TD)

NVR, Inc. owns and is the author of the copyright in the drawings and specifications. No part of these drawings and specifications may be reproduced, stored in a retrieval system, or transmitted in any form or by any means, electronic, mechanical, photocopying, recording, or by any information storage and retrieval system, without the prior written consent of NVR, Inc.



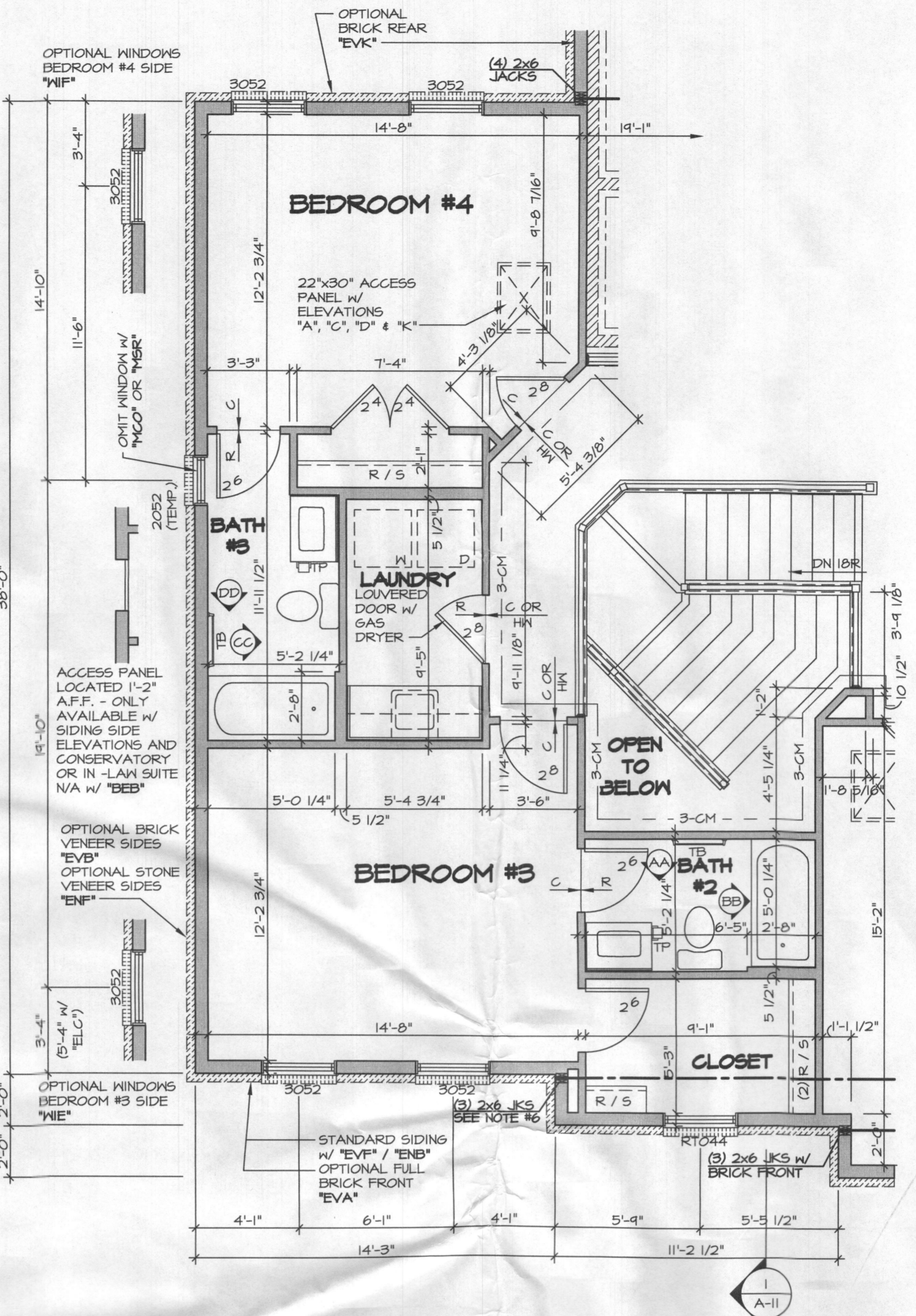
SET NO. 10300
VERSION 0
DRAWN BY ALH
DATE: 12/21/12
OPTION

SHEET NO. 54
MODEL CLIFTON PARK II
DRAWING TITLE SECOND FLOOR PLAN
OPTION DESCRIPTION



1 PARTIAL SECOND FLOOR PLAN
SCALE: 1/4" = 1'-0"

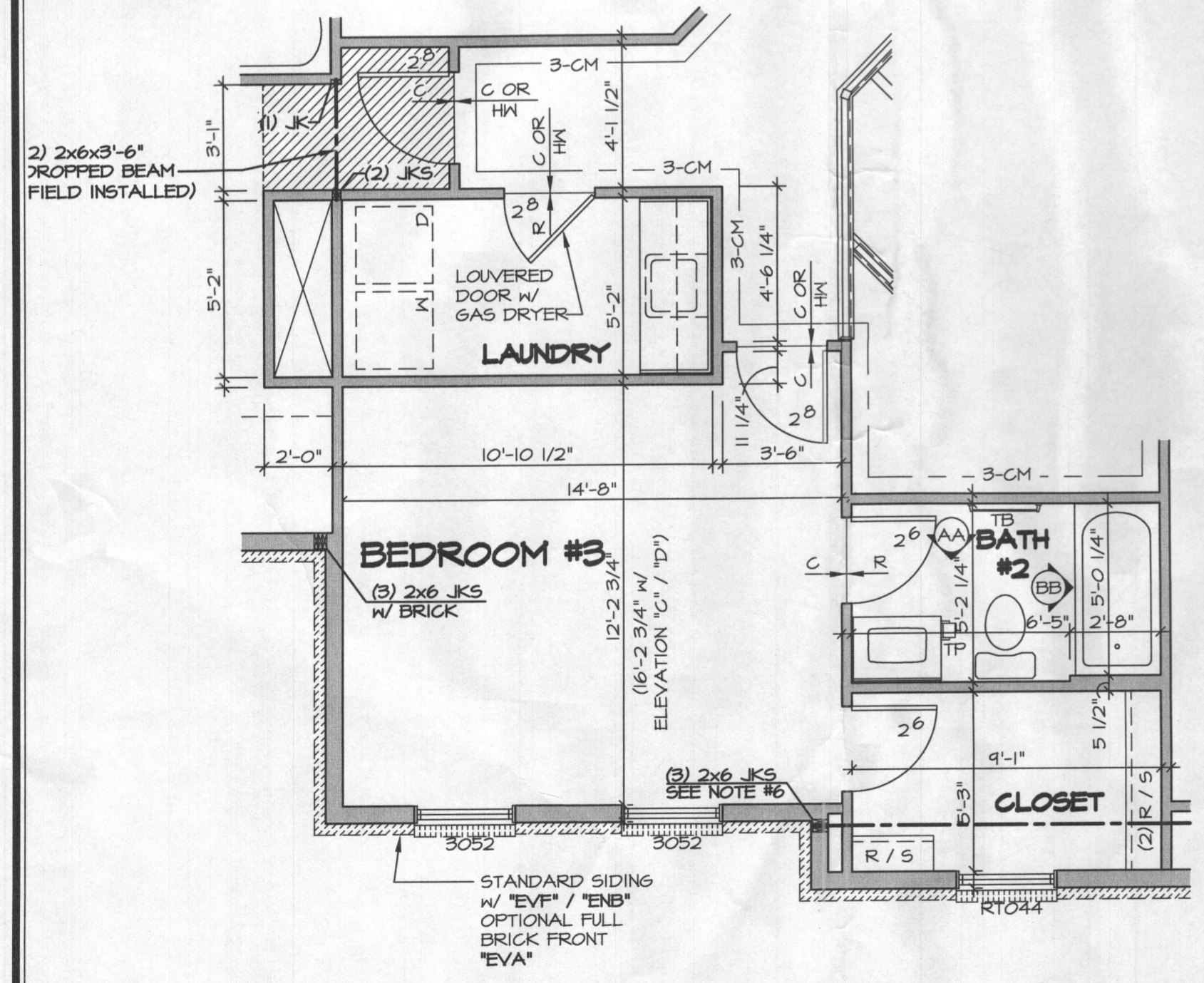
FIVE BEDROOM "BEB" W/ SECOND FLOOR LAUNDRY "VAN"
NOTE: ONLY AVAILABLE W/ "MCO" OR "MSR"



2 PARTIAL SECOND FLOOR PLAN
SCALE: 1/4" = 1'-0"

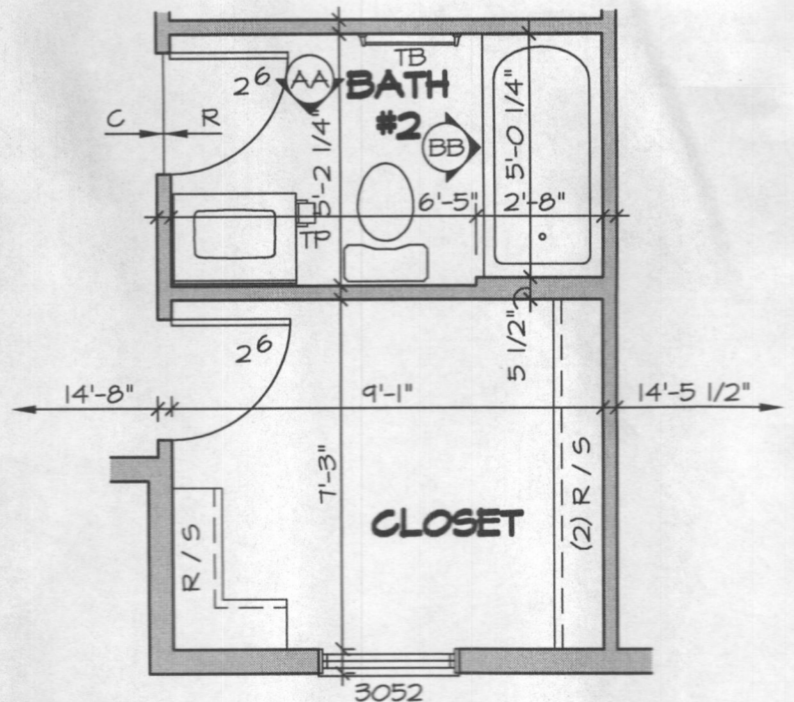
SECOND FLOOR LAUNDRY "VAN"

5+0+1=6
Total!



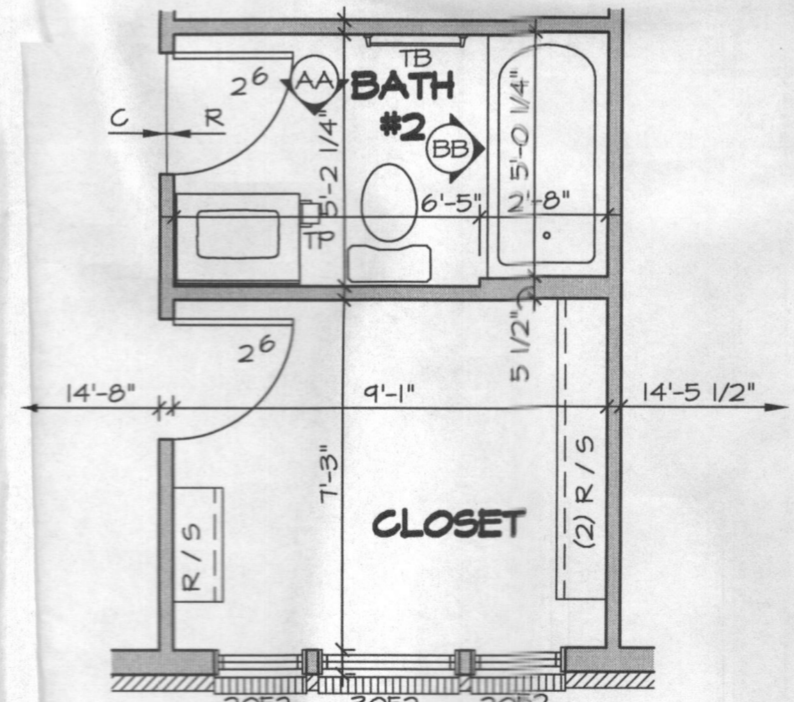
3 PARTIAL SECOND FLOOR PLAN
SCALE: 1/4" = 1'-0"

FIVE BEDROOM "BEB" W/ SECOND FLOOR LAUNDRY "VAN"



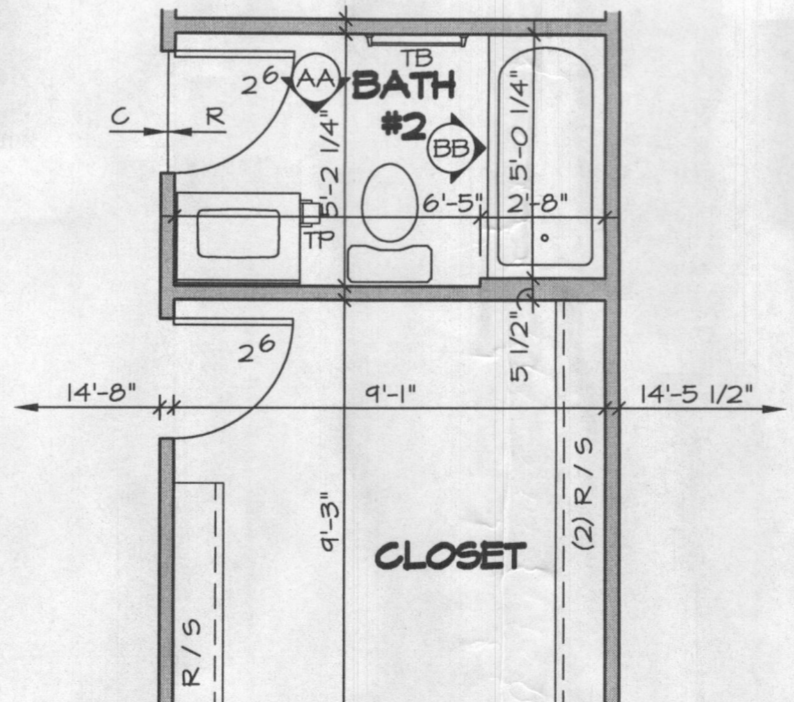
4 PARTIAL SECOND FLOOR PLAN
SCALE: 1/4" = 1'-0"

ELEVATION "B" W/ OPT. SECOND FLOOR LAUNDRY "ELB" / "VAN"



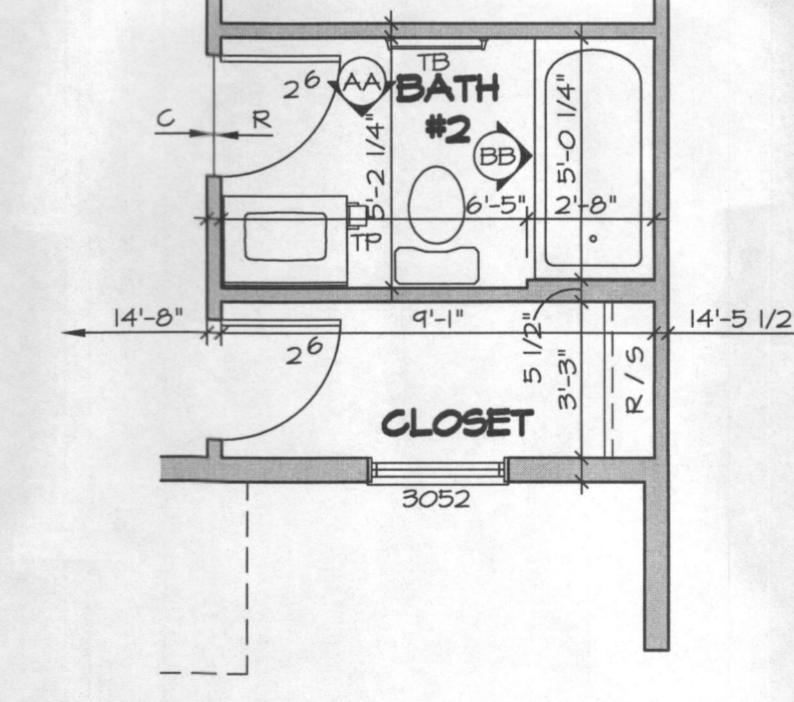
5 PARTIAL SECOND FLOOR PLAN
SCALE: 1/4" = 1'-0"

ELEVATION "C" W/ OPT. SECOND FLOOR LAUNDRY "ELC" / "VAN"



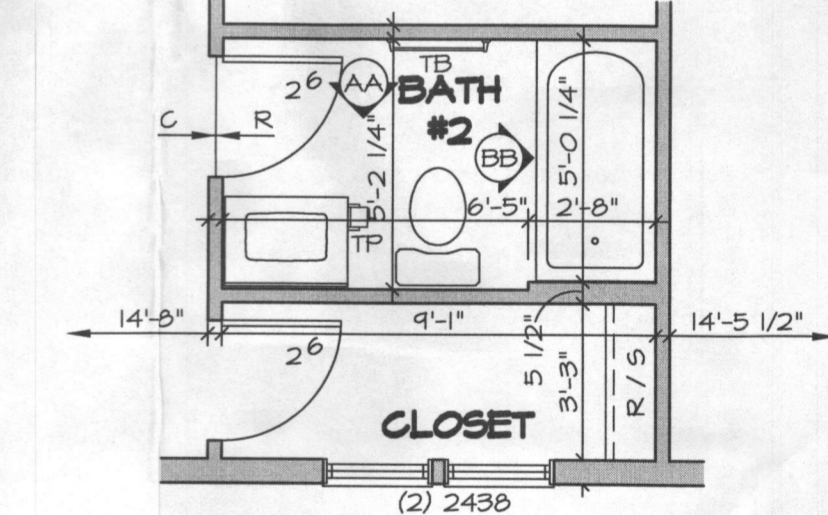
6 PARTIAL SECOND FLOOR PLAN
SCALE: 1/4" = 1'-0"

ELEVATION "D" W/ OPT. SECOND FLOOR LAUNDRY "ELD" / "VAN"



7 PARTIAL SECOND FLOOR PLAN
SCALE: 1/4" = 1'-0"

ELEVATION "K" W/ OPT. SECOND FLOOR LAUNDRY "ELK" / "VAN"



8 PARTIAL SECOND FLOOR PLAN
SCALE: 1/4" = 1'-0"

ELEVATION "L" W/ OPT. SECOND FLOOR LAUNDRY "ELL" / "VAN"

- NOTES:**
- ALL HEADERS ARE (3) 2x6, UNLESS OTHERWISE NOTED.
 - ALL EXTERIOR WALLS ARE 6" UNLESS OTHERWISE NOTED. ALL INTERIOR WALLS ARE 3 1/2" UNLESS OTHERWISE NOTED.
 - HATCHED AREAS INDICATE DROPPED CEILINGS.
 - ALL GATED OPENINGS AT T-111, UNLESS OTHERWISE NOTED.
 - WASHER ALWAYS ON THE LEFT PER PLAN OR REVERSE PLAN (WHERE APPLICABLE).
 - JACKS MUST EXTEND THROUGH TOP PLATES OF WALL TO BEAR DIRECTLY ON BOTTOM CHORD OF GIRDER TRUSS AT LOCATIONS NOTED

NOTE:
1. PARTIAL PLANS SHOWN W/ ELEVATION "A". SEE SHEET A-10 AND A-10B FOR ADDITIONAL INFORMATION.
2. MATCH VENEER ACCORDING TO SELECTED ELEVATION.

NOTE:
SEE SHEET 5-1 FOR BRACED WALL PANEL LOCATIONS

REV. NO.	DATE	REMARKS
10	6/21/15	DLR - REV. STAIR RISER PLATFORM TO KINDER TO ACCOMMODATE (PAR B3809)
11	2/21/17	KAD - PROJECT #1955 - ADDED COUNTERTOP LAYOUTS FOR OWNERS BATH
12	5/1/14	A.J.H. - PAR # 23948 (ADDED NOTE FOR WINDOW AT BATH #3 / ACCESS PANEL)
13	5/7/14	A.J.H. - ADDED ELEVATION "L" TO BEIT
14	5/9/14	B.H. - TUB/SHOWER PROJECT
15	6/21/14	CALB - ADDED TEMP. TO THE TSOORR WINDOW (ELD) PER PAR # 24615
16	6/21/14	ELJ5 - RELOCATED TONEL BAR (BATH #3) (PAR#25103)
17	10/21/14	GL5 - ADD NOTE. NO WINDOW CASING. DORMER WINDOW BEDROOM #5 (PAR 22816)
18	11/26/14	56A - AUDIT REVISIONS

NVR
NVR, Inc.
Architectural Services
21 Braddock, Suite A
Frederick, MD 21702

SHEET NO.	A-10C
MODEL	CLIFTON PARK II
DRAWING TITLE	SECOND FLOOR PARTIAL PLANS
VERSION 01	DRAWN BY A.J.H.
DATE:	12/2/12
OPTION	BEB VAN
OPTION DESCRIPTION	5TH BEDROOM SECOND FLOOR LAUNDRY
SHEET NO.	57

J:\DWG\DWG\DETACHED\CLIFTON PARK II\10300_01\PLAN_02\14.17 - 4:37 PM