

UPPER FLOOR PLAN

W/ELEVATION "A"

UNLESS OTHERWISE NOTED ALL INTERIOR PARTITIONS TO BE 3/2"
UNLESS OTHERWISE NOTED WINDOW HEAD HEIGHT TO BE 1'-0" AS.F.
UNLESS OTHERWISE NOTED PROVIDE 2'-2"x6" POSTS BETWEEN ALL MULTIPLE WINDOWS.

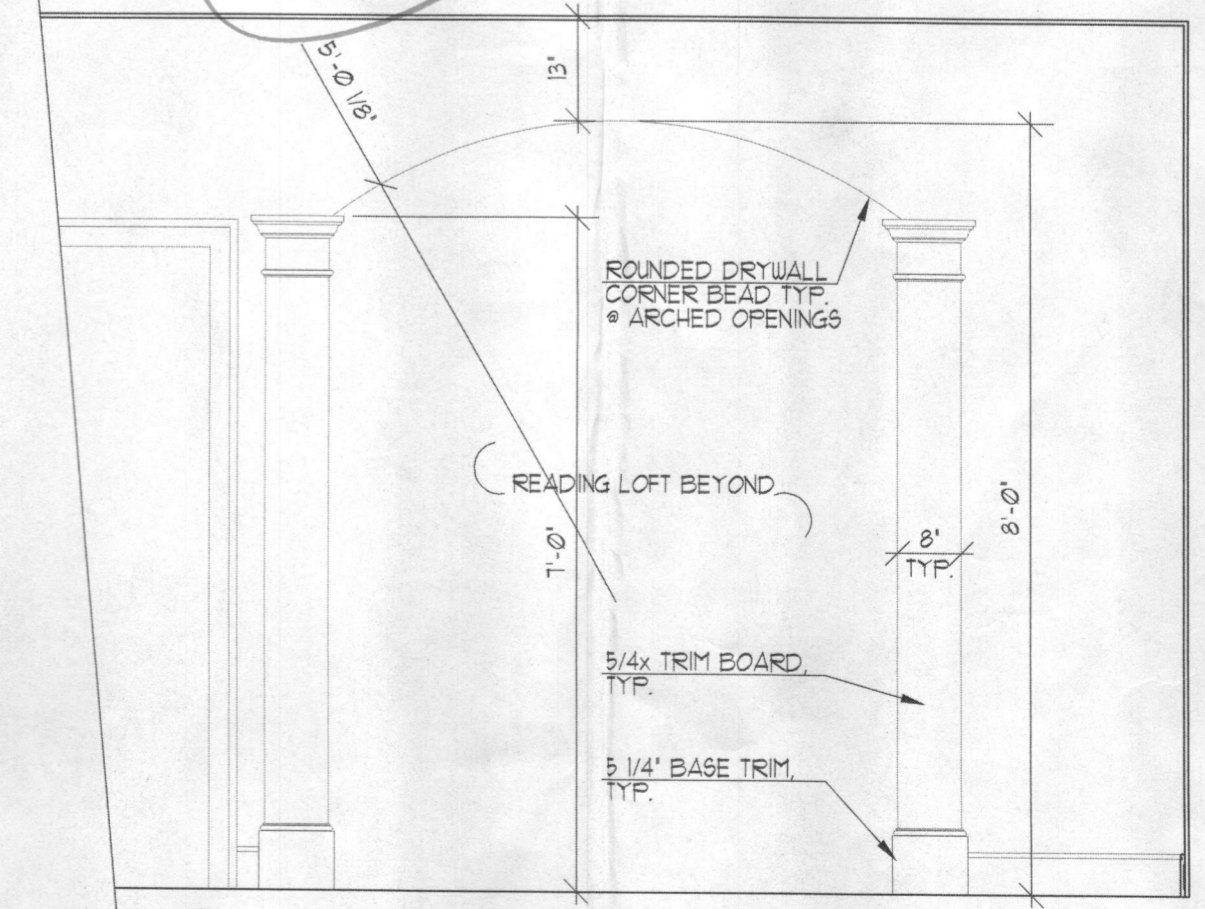
1/4" = 1'-0"



ID-1 Interior Elevation
Master Bath

1/2" = 1'-0"

*Second Floor
4 Bedrooms
For a total
of
5 Bedrooms*



ID-2 Interior Elevation

Reading Loft Casework Opening

1/2" = 1'-0"

Date	REV.	BY	CHK.
AC. 10/15/07	BGB		
AC. 11/01/08	M		
AC. 12/01/08	M		
PA. 02/01/09	M		
CA. 01/01/11	MUCS		
REV. 01/09/11	MUCS		
REV. 06/10/11	DG		
REV. 01/15/16	AT		

Project Number: 0706-04

HAWTHORNE
MITCHELL BEST HOMES

Architect

SUTTON
YANTIS
ASSOCIATES
ARCHITECTS

WWW.SYABA.COM
8300 Boone Blvd., Tel. 703.734.9733
Virginia, VA 22162 Fax 703.847.9171

Date	
REV. 05/20/13 JG	
REV. 06/19/13 JG	
REV. 03/12/15 JR	
REV. 01/15/16 AT	

Project Number: 0706-04A
HAWTHORNE
MITCHELL BEST HOMES

Architect

SUTTON
YANTIS
ASSOCIATES
ARCHITECTS

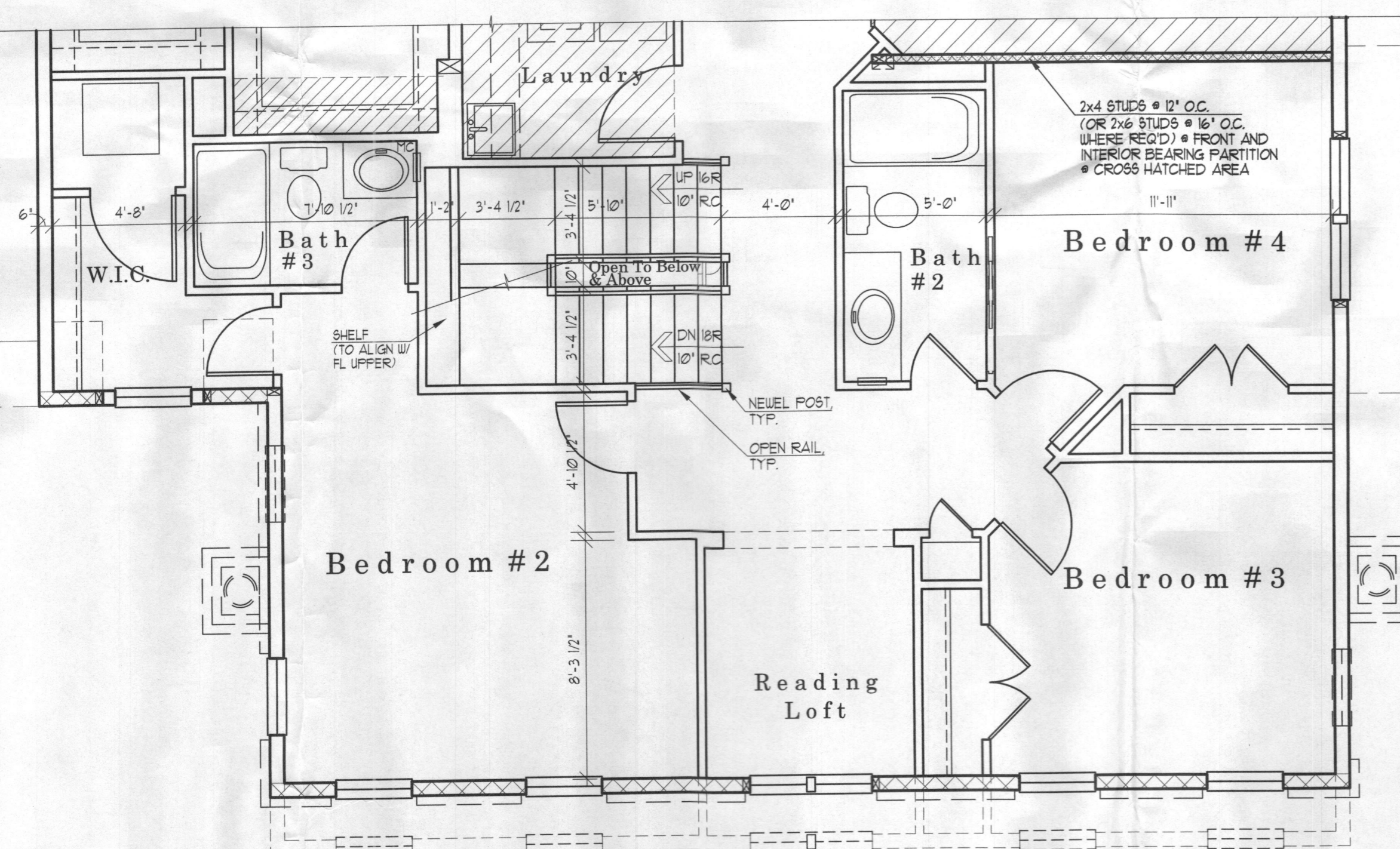
8500 Boone Blvd. Tel: 703.754.0723
 Vienna, VA 22182 Fax: 703.847.3171
 www.sya.com

Sheet Number
4A

PARTIAL UPPER FLOOR PLAN

SHOWN W/OPTIONAL ATTIC

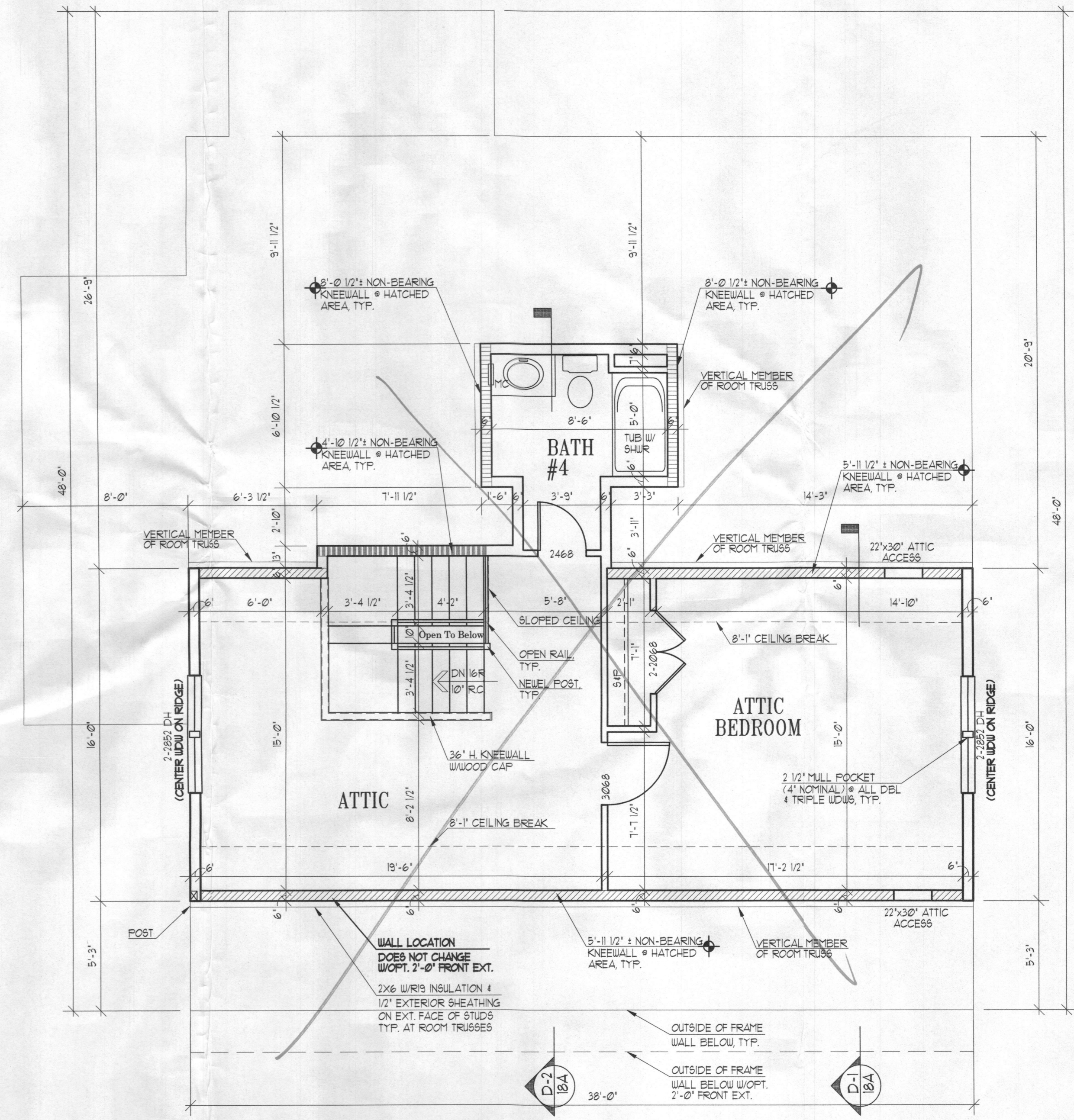
1/4" = 1'-0"

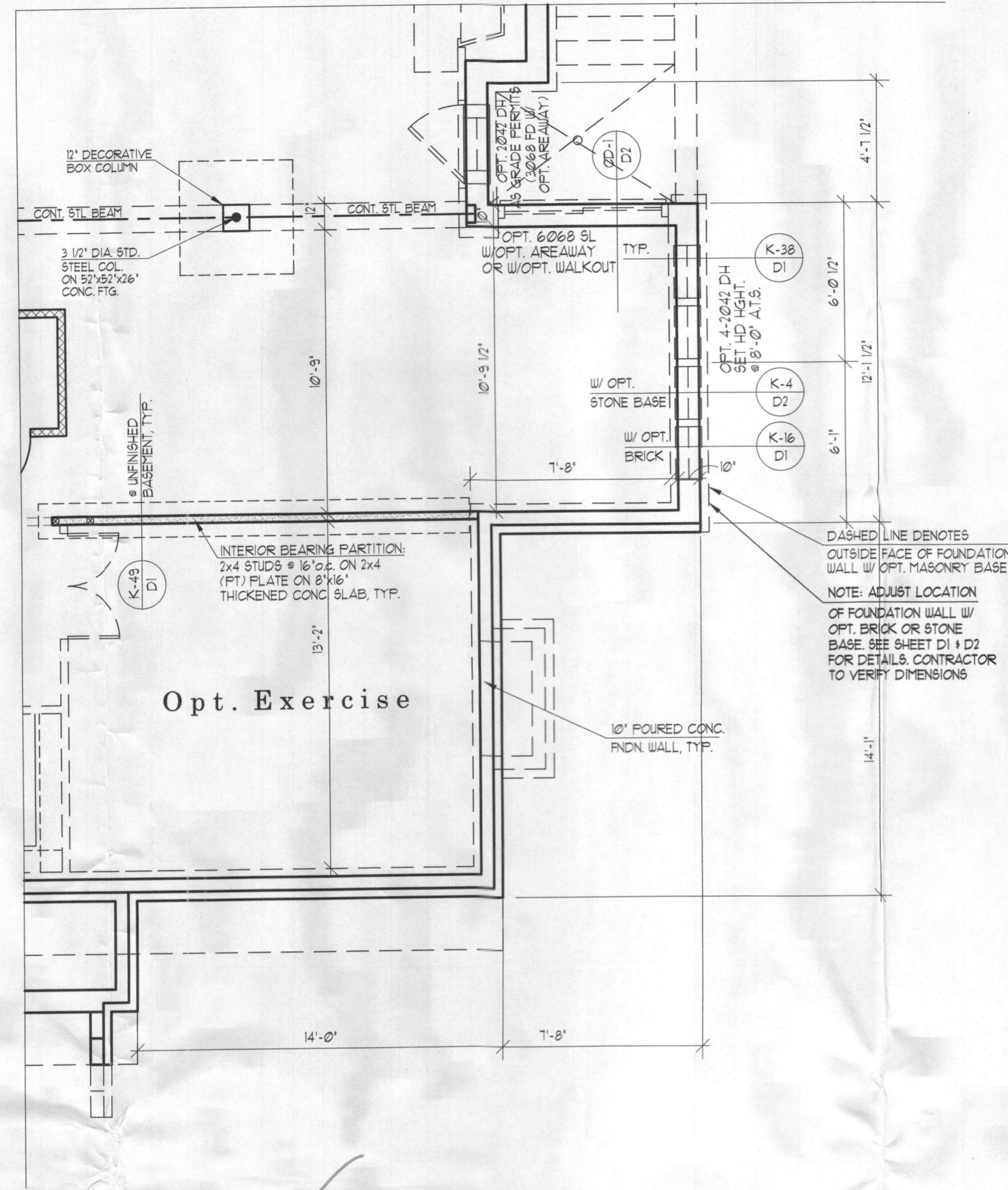


OPT. ATTIC FLOOR PLAN

UNLESS OTHERWISE NOTED ALL INTERIOR PARTITIONS TO BE 3/2"
 UNLESS OTHERWISE NOTED WINDOW HEAD HEIGHT TO BE 1'-4" A.S.F.
 UNLESS OTHERWISE NOTED PROVIDE 2-2x6 POSTS BETWEEN ALL MULTIPLE WINDOWS.

1/4" = 1'-0"



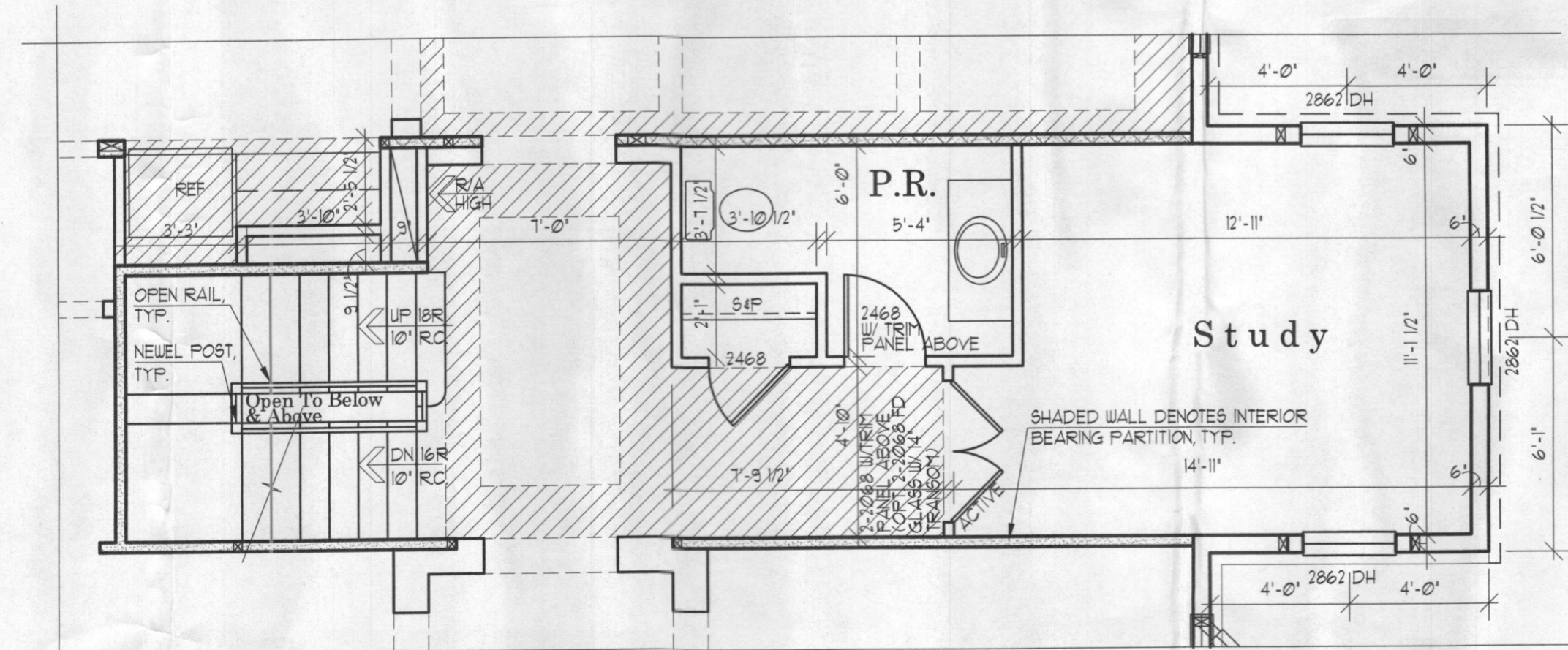


PART'L FNDN/BSMT FLOOR PLAN

W/OPT. 8FT. SIDE EXTENSION

UNLESS OTHERWISE NOTED ALL INTERIOR PARTITIONS TO BE 3/2"
UNLESS OTHERWISE NOTED PROVIDE 2-2x6 POSTS BETWEEN ALL MULTIPLE WINDOWS

1/4" = 1'-0"



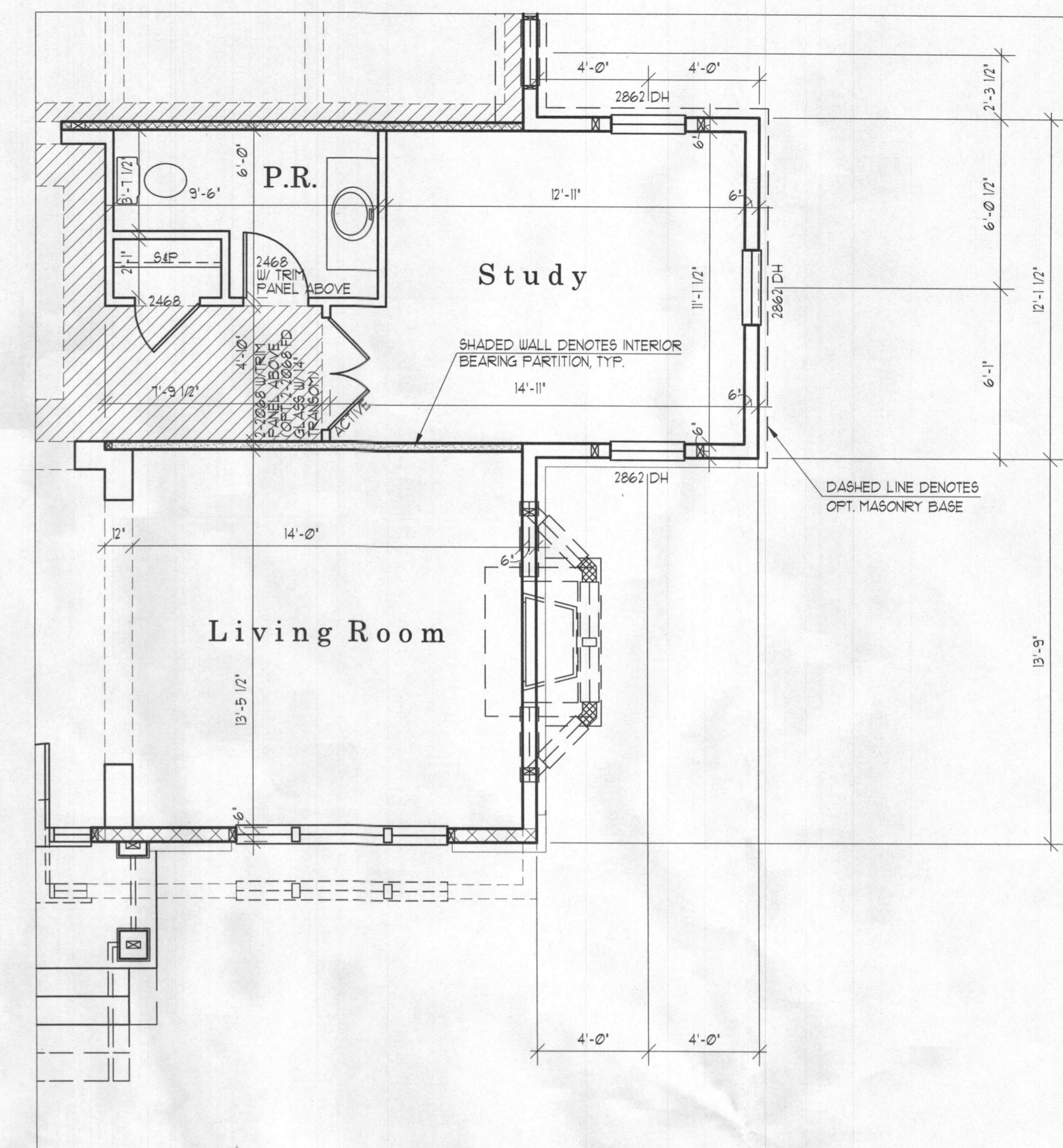
PART'L LOWER FLOOR PLAN

W/OPT. 8FT. SIDE EXTENSION
W/ EXPANDED KITCHEN CABINETS

UNLESS OTHERWISE NOTED ALL INTERIOR PARTITIONS TO BE 3/2"
UNLESS OTHERWISE NOTED WINDOW HEAD HEIGHT TO BE 8'-0" A.S.F.

1/4" = 1'-0"

NOTE: FOR INFORMATION NOT SHOWN IN PARTIALS, SEE STANDARD FOUNDATION/BASEMENT PLAN, LOWER FLOOR PLAN AND UPPER FLOOR PLAN

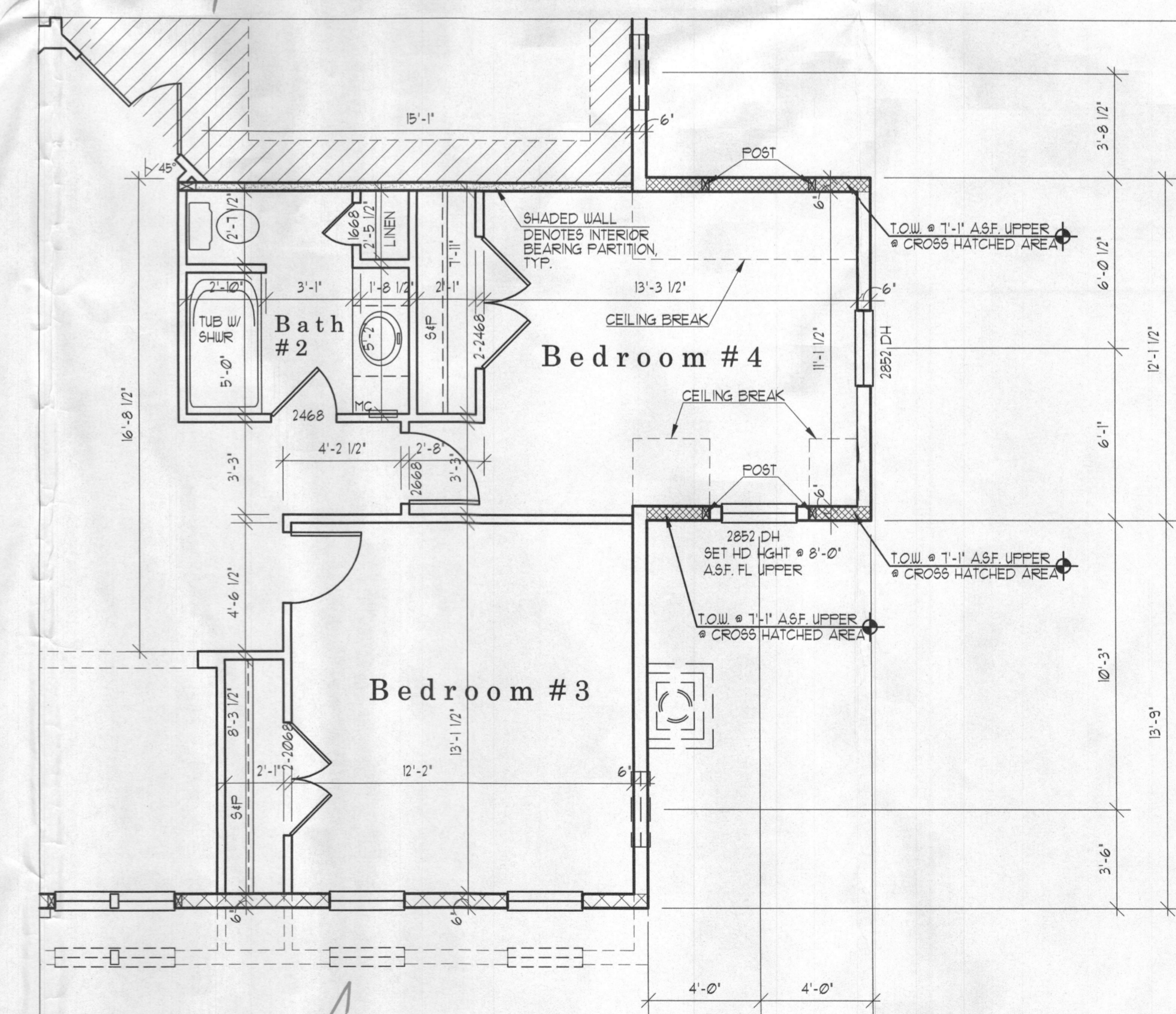


PART'L LOWER FLOOR PLAN

W/OPT. 8FT. SIDE EXTENSION

UNLESS OTHERWISE NOTED ALL INTERIOR PARTITIONS TO BE 3/2"
UNLESS OTHERWISE NOTED WINDOW HEAD HEIGHT TO BE 8'-0" A.S.F.
UNLESS OTHERWISE NOTED PROVIDE 2-2x6 POSTS BETWEEN ALL MULTIPLE WINDOWS

1/4" = 1'-0"



PART'L UPPER FLOOR PLAN

W/OPT. 8FT. SIDE EXTENSION

UNLESS OTHERWISE NOTED ALL INTERIOR PARTITIONS TO BE 3/2"
UNLESS OTHERWISE NOTED WINDOW HEAD HEIGHT TO BE 8'-0" A.S.F.
UNLESS OTHERWISE NOTED PROVIDE 2-2x6 POSTS BETWEEN ALL MULTIPLE WINDOWS

1/4" = 1'-0"

Date	REV.	BY	CHK.	REV.	DATE
AC. 10/16/07	BGB			REV. 01/16/10	JG
AC. 11/01/10	JH			REV. 02/10/12	JG
PA. 12/15/10	JH			REV. 04/12/12	JG
CA. 01/13/11	JH/C3			PA. 05/09/12	JG
REV. 02/15/11	JH/C3			PA. 06/13/12	JG
REV. 05/10/11	DG			REV. 10/09/14	JR
				REV. 02/15/15	JR

Project Number: 0706

HAWTHORNE
MITCHELL BEST HOMES

Architect

SUTTON
YANTIS
ASSOCIATES

ARCHITECTS

www.syaac.com

1000 W. MAIN ST., SUITE 100
SCHAUMBURG, IL 60196
TEL: 708.344.4700
FAX: 708.344.0171

Sheet Number

5

