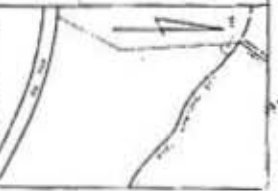
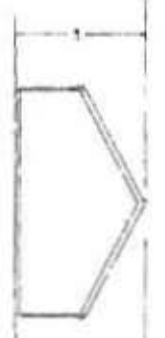
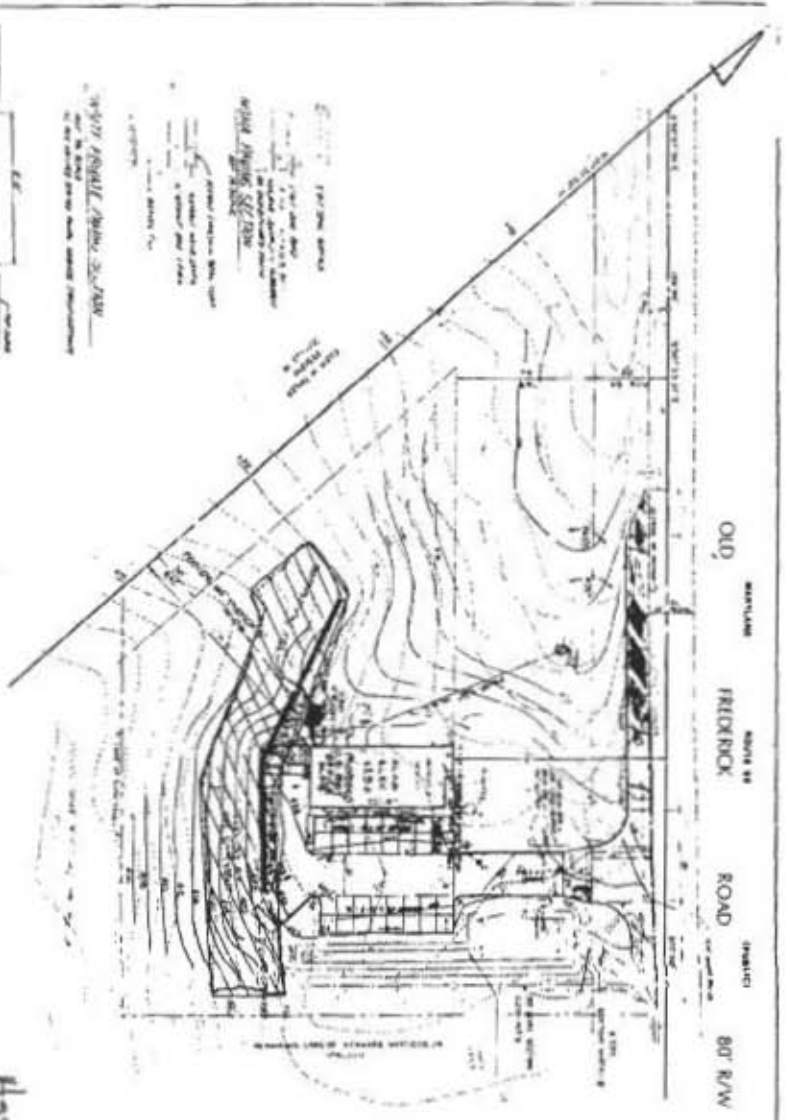


Woodstock

OLD FREDERICK ROAD 80' R/W



10501 Route 99
Old Frederick Rd

House Built

1986

03-286827

Hanson Alexander Inc
Woodstock Remodeling



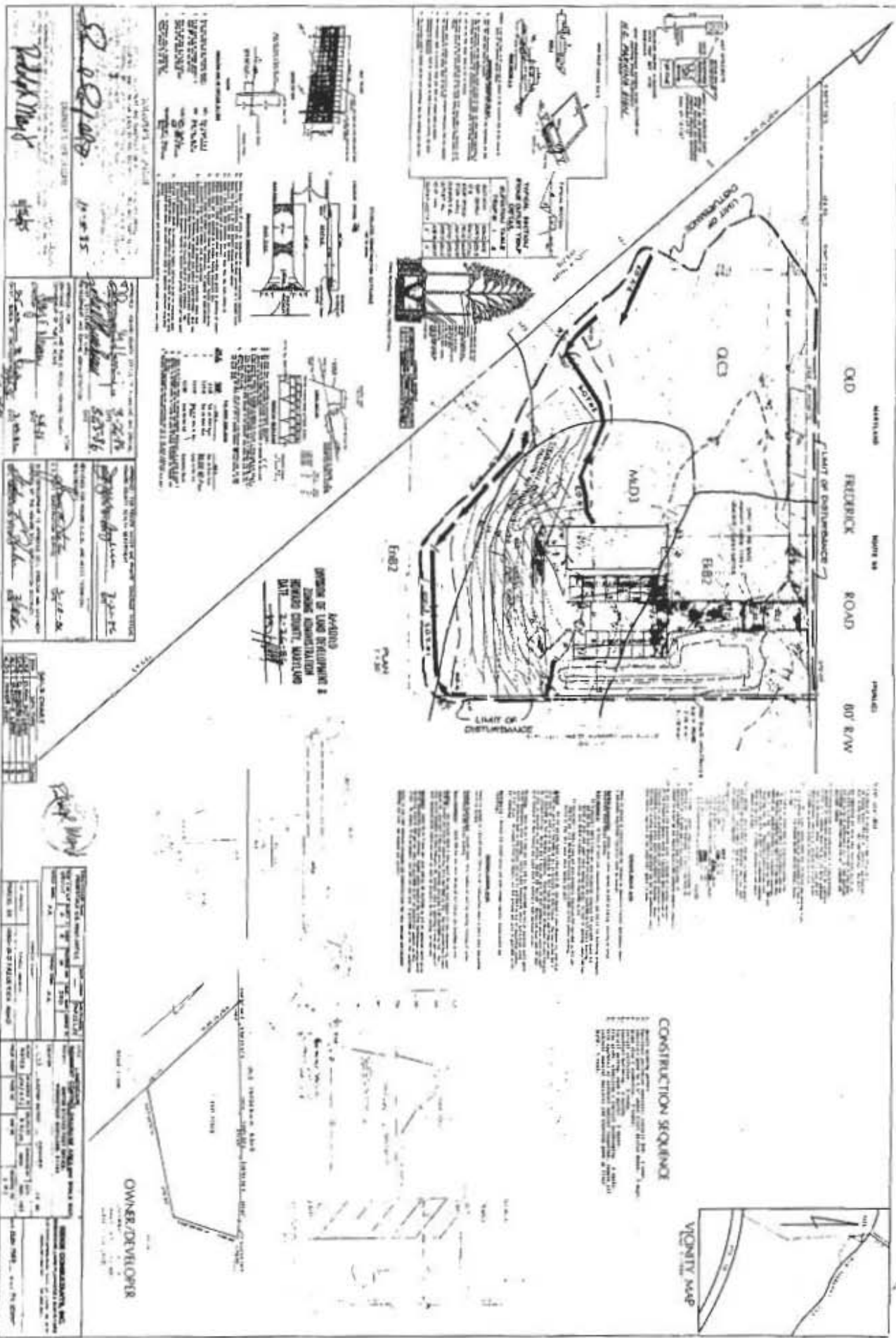
OWNER/DEVELOPER

MATERIAL SPECIFICATIONS
1. ALL CONCRETE SHALL BE 3000 PSI STRENGTH WITH 4% STEEL FIBERS.
2. ALL CONCRETE SHALL BE PLACED AND FINISHED WITH A FINISH TO MATCH THE EXISTING CONCRETE.
3. ALL CONCRETE SHALL BE CURIED PROPERLY.
4. ALL CONCRETE SHALL BE PROTECTED FROM FREEZING TEMPERATURES.
5. ALL CONCRETE SHALL BE PROTECTED FROM OIL AND GREASE.
6. ALL CONCRETE SHALL BE PROTECTED FROM ACIDIC SUBSTANCES.
7. ALL CONCRETE SHALL BE PROTECTED FROM ALKALINE SUBSTANCES.
8. ALL CONCRETE SHALL BE PROTECTED FROM SALTS.
9. ALL CONCRETE SHALL BE PROTECTED FROM DEICING CHEMICALS.
10. ALL CONCRETE SHALL BE PROTECTED FROM WEAR AND TEAR.
11. ALL CONCRETE SHALL BE PROTECTED FROM DISCOLORATION.
12. ALL CONCRETE SHALL BE PROTECTED FROM SPALLS.
13. ALL CONCRETE SHALL BE PROTECTED FROM CRACKING.
14. ALL CONCRETE SHALL BE PROTECTED FROM SCAFFOLDING.
15. ALL CONCRETE SHALL BE PROTECTED FROM VIBRATION.
16. ALL CONCRETE SHALL BE PROTECTED FROM IMPACT.
17. ALL CONCRETE SHALL BE PROTECTED FROM COLLISION.
18. ALL CONCRETE SHALL BE PROTECTED FROM OVERLOADING.
19. ALL CONCRETE SHALL BE PROTECTED FROM UNDERLOADING.
20. ALL CONCRETE SHALL BE PROTECTED FROM TENSILE STRESS.
21. ALL CONCRETE SHALL BE PROTECTED FROM COMPRESSIVE STRESS.
22. ALL CONCRETE SHALL BE PROTECTED FROM SHEAR STRESS.
23. ALL CONCRETE SHALL BE PROTECTED FROM TORSIONAL STRESS.
24. ALL CONCRETE SHALL BE PROTECTED FROM FLEXURAL STRESS.
25. ALL CONCRETE SHALL BE PROTECTED FROM THERMAL STRESS.
26. ALL CONCRETE SHALL BE PROTECTED FROM MOISTURE.
27. ALL CONCRETE SHALL BE PROTECTED FROM DRYING SHRINKAGE.
28. ALL CONCRETE SHALL BE PROTECTED FROM PLASTIC SHRINKAGE.
29. ALL CONCRETE SHALL BE PROTECTED FROM AUTOCURE SHRINKAGE.
30. ALL CONCRETE SHALL BE PROTECTED FROM TEMPERATURE FLUCTUATIONS.
31. ALL CONCRETE SHALL BE PROTECTED FROM SUNLIGHT.
32. ALL CONCRETE SHALL BE PROTECTED FROM RAIN.
33. ALL CONCRETE SHALL BE PROTECTED FROM WIND.
34. ALL CONCRETE SHALL BE PROTECTED FROM ICE.
35. ALL CONCRETE SHALL BE PROTECTED FROM SNOW.
36. ALL CONCRETE SHALL BE PROTECTED FROM HAIL.
37. ALL CONCRETE SHALL BE PROTECTED FROM DEBRIS.
38. ALL CONCRETE SHALL BE PROTECTED FROM ROOTS.
39. ALL CONCRETE SHALL BE PROTECTED FROM INSECTS.
40. ALL CONCRETE SHALL BE PROTECTED FROM MOLD.
41. ALL CONCRETE SHALL BE PROTECTED FROM FUNGI.
42. ALL CONCRETE SHALL BE PROTECTED FROM BACTERIA.
43. ALL CONCRETE SHALL BE PROTECTED FROM VIRUSES.
44. ALL CONCRETE SHALL BE PROTECTED FROM PARASITES.
45. ALL CONCRETE SHALL BE PROTECTED FROM POLLUTANTS.
46. ALL CONCRETE SHALL BE PROTECTED FROM OXYGEN.
47. ALL CONCRETE SHALL BE PROTECTED FROM CARBON DIOXIDE.
48. ALL CONCRETE SHALL BE PROTECTED FROM SULFUR DIOXIDE.
49. ALL CONCRETE SHALL BE PROTECTED FROM NITROGEN DIOXIDE.
50. ALL CONCRETE SHALL BE PROTECTED FROM OZONE.
51. ALL CONCRETE SHALL BE PROTECTED FROM ACID RAIN.
52. ALL CONCRETE SHALL BE PROTECTED FROM ALKALINE RAIN.
53. ALL CONCRETE SHALL BE PROTECTED FROM SALINITY.
54. ALL CONCRETE SHALL BE PROTECTED FROM CORROSION.
55. ALL CONCRETE SHALL BE PROTECTED FROM WEATHERING.
56. ALL CONCRETE SHALL BE PROTECTED FROM CLIMATE CHANGE.
57. ALL CONCRETE SHALL BE PROTECTED FROM GLOBAL WARMING.
58. ALL CONCRETE SHALL BE PROTECTED FROM CLIMATE COOLING.
59. ALL CONCRETE SHALL BE PROTECTED FROM CLIMATE STABILIZATION.
60. ALL CONCRETE SHALL BE PROTECTED FROM CLIMATE RESILIENCE.
61. ALL CONCRETE SHALL BE PROTECTED FROM CLIMATE ADAPTATION.
62. ALL CONCRETE SHALL BE PROTECTED FROM CLIMATE MITIGATION.
63. ALL CONCRETE SHALL BE PROTECTED FROM CLIMATE TRANSITION.
64. ALL CONCRETE SHALL BE PROTECTED FROM CLIMATE JUSTICE.
65. ALL CONCRETE SHALL BE PROTECTED FROM CLIMATE ACTION.
66. ALL CONCRETE SHALL BE PROTECTED FROM CLIMATE POLICY.
67. ALL CONCRETE SHALL BE PROTECTED FROM CLIMATE SCIENCE.
68. ALL CONCRETE SHALL BE PROTECTED FROM CLIMATE ECONOMY.
69. ALL CONCRETE SHALL BE PROTECTED FROM CLIMATE SOCIETY.
70. ALL CONCRETE SHALL BE PROTECTED FROM CLIMATE CULTURE.
71. ALL CONCRETE SHALL BE PROTECTED FROM CLIMATE IDENTITY.
72. ALL CONCRETE SHALL BE PROTECTED FROM CLIMATE VALUES.
73. ALL CONCRETE SHALL BE PROTECTED FROM CLIMATE BELIEFS.
74. ALL CONCRETE SHALL BE PROTECTED FROM CLIMATE ETHICS.
75. ALL CONCRETE SHALL BE PROTECTED FROM CLIMATE MORALS.
76. ALL CONCRETE SHALL BE PROTECTED FROM CLIMATE PRINCIPLES.
77. ALL CONCRETE SHALL BE PROTECTED FROM CLIMATE STANDARDS.
78. ALL CONCRETE SHALL BE PROTECTED FROM CLIMATE BEST PRACTICES.
79. ALL CONCRETE SHALL BE PROTECTED FROM CLIMATE INNOVATION.
80. ALL CONCRETE SHALL BE PROTECTED FROM CLIMATE LEADERSHIP.
81. ALL CONCRETE SHALL BE PROTECTED FROM CLIMATE PARTNERSHIP.
82. ALL CONCRETE SHALL BE PROTECTED FROM CLIMATE COOPERATION.
83. ALL CONCRETE SHALL BE PROTECTED FROM CLIMATE COLLABORATION.
84. ALL CONCRETE SHALL BE PROTECTED FROM CLIMATE SYNERGY.
85. ALL CONCRETE SHALL BE PROTECTED FROM CLIMATE INTEGRATION.
86. ALL CONCRETE SHALL BE PROTECTED FROM CLIMATE INCLUSION.
87. ALL CONCRETE SHALL BE PROTECTED FROM CLIMATE PARTICIPATION.
88. ALL CONCRETE SHALL BE PROTECTED FROM CLIMATE ENGAGEMENT.
89. ALL CONCRETE SHALL BE PROTECTED FROM CLIMATE ACCOUNTABILITY.
90. ALL CONCRETE SHALL BE PROTECTED FROM CLIMATE TRANSPARENCY.
91. ALL CONCRETE SHALL BE PROTECTED FROM CLIMATE INTEGRITY.
92. ALL CONCRETE SHALL BE PROTECTED FROM CLIMATE HONESTY.
93. ALL CONCRETE SHALL BE PROTECTED FROM CLIMATE FAITHFULNESS.
94. ALL CONCRETE SHALL BE PROTECTED FROM CLIMATE COURAGE.
95. ALL CONCRETE SHALL BE PROTECTED FROM CLIMATE DETERMINATION.
96. ALL CONCRETE SHALL BE PROTECTED FROM CLIMATE PERSEVERANCE.
97. ALL CONCRETE SHALL BE PROTECTED FROM CLIMATE RESILIENCE.
98. ALL CONCRETE SHALL BE PROTECTED FROM CLIMATE ENDURANCE.
99. ALL CONCRETE SHALL BE PROTECTED FROM CLIMATE LONGEVITY.
100. ALL CONCRETE SHALL BE PROTECTED FROM CLIMATE SUSTAINABILITY.

APPROVED
PROJECT OF LAND DEVELOPMENT
RECORDS DEPARTMENT
DATE: 12-23-2020

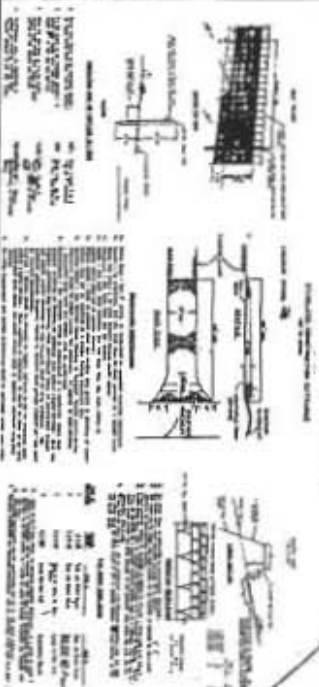
GENERAL NOTES
1. THE SHOWN LOT AREA IS APPROXIMATE.
2. THE SHOWN AREA IS FOR INFORMATION ONLY.
3. THE SHOWN AREA IS NOT TO BE USED FOR ANY PURPOSE.
4. THE SHOWN AREA IS NOT TO BE USED FOR ANY PURPOSE.
5. THE SHOWN AREA IS NOT TO BE USED FOR ANY PURPOSE.
6. THE SHOWN AREA IS NOT TO BE USED FOR ANY PURPOSE.
7. THE SHOWN AREA IS NOT TO BE USED FOR ANY PURPOSE.
8. THE SHOWN AREA IS NOT TO BE USED FOR ANY PURPOSE.
9. THE SHOWN AREA IS NOT TO BE USED FOR ANY PURPOSE.
10. THE SHOWN AREA IS NOT TO BE USED FOR ANY PURPOSE.

| NO. | DESCRIPTION | DATE | BY |
|-----|-------------|------------|-------------|
| 1 | APPROVED | 12-23-2020 | [Signature] |
| 2 | REVISION | | |
| 3 | REVISION | | |
| 4 | REVISION | | |
| 5 | REVISION | | |
| 6 | REVISION | | |
| 7 | REVISION | | |
| 8 | REVISION | | |
| 9 | REVISION | | |
| 10 | REVISION | | |



SECTION 13
SECTION 12
SECTION 11
SECTION 10
SECTION 9
SECTION 8
SECTION 7
SECTION 6
SECTION 5
SECTION 4
SECTION 3
SECTION 2
SECTION 1

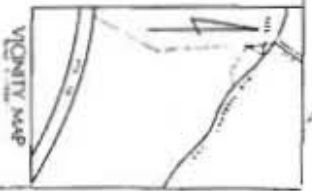
OLD FREDERICK ROAD
80' R/W



OWNER OF LAND RESERVING A
RIGHT OF FIRST REFUSAL
AND OPTION TO PURCHASE
THE LAND

CONSTRUCTION SCHEDULE

1. PRELIMINARY DESIGN AND PERMITTING: 12 MONTHS
2. GROUNDWORK AND FOUNDATION: 6 MONTHS
3. SUPERSTRUCTURE CONSTRUCTION: 18 MONTHS
4. INTERIOR FINISHES AND MECHANICAL/ELECTRICAL/PLUMBING: 12 MONTHS
5. EXTERIOR FINISHES AND LANDSCAPING: 6 MONTHS
6. TOTAL PROJECT DURATION: 54 MONTHS



OWNER'S NAME: *S. O. O'Leary*
ADDRESS: *12-15-35*
DATE: *12-15-35*

OWNER'S NAME: *S. O. O'Leary*
ADDRESS: *12-15-35*
DATE: *12-15-35*

OWNER'S NAME: *S. O. O'Leary*
ADDRESS: *12-15-35*
DATE: *12-15-35*

| NO. | DESCRIPTION | AMOUNT | TOTAL |
|-----|--------------------|------------|------------|
| 1 | CONSTRUCTION COSTS | 100,000.00 | 100,000.00 |
| 2 | PERMITTING COSTS | 5,000.00 | 105,000.00 |
| 3 | LANDSCAPING COSTS | 2,000.00 | 107,000.00 |
| 4 | UTILITIES COSTS | 3,000.00 | 110,000.00 |
| 5 | CONTINGENCY COSTS | 10,000.00 | 120,000.00 |
| 6 | PROFESSIONAL FEES | 15,000.00 | 135,000.00 |
| 7 | MARKETING COSTS | 5,000.00 | 140,000.00 |
| 8 | LEGAL COSTS | 5,000.00 | 145,000.00 |
| 9 | INSURANCE COSTS | 5,000.00 | 150,000.00 |
| 10 | FINANCING COSTS | 5,000.00 | 155,000.00 |
| 11 | OTHER COSTS | 5,000.00 | 160,000.00 |
| 12 | RESERVE COSTS | 5,000.00 | 165,000.00 |
| 13 | UNASSIGNED COSTS | 5,000.00 | 170,000.00 |
| 14 | TOTAL COST | 170,000.00 | 170,000.00 |