



Load Short Form Entire House

Job: Maple Lawn Cottage-A
Date: Jun 12, 2015
By: Jordan Claar

Approved (KMW) 4/11/17 (KMW)
M17000336

Project Information

For: Maple Lawn Cottage-A, Bozzuto Homes Inc.
MD

11523 Green Street

Design Information

	Htg	Clg	Method	Infiltration	Simplified Average
Outside db (°F)	15	97			
Inside db (°F)	70	75	Construction quality		
Design TD (°F)	55	22	Fireplaces		
Daily range	-	M			
Inside humidity (%)	35	50			
Moisture difference (gr/lb)	29	48			

HEATING EQUIPMENT

COOLING EQUIPMENT

Make
Trade
Model
AHRI ref

Make
Trade
Cond
Coil
AHRI ref

Efficiency 80 AFUE
Heating input 0 Btuh
Heating output 0 Btuh
Temperature rise 0 °F
Actual air flow 1861 cfm
Air flow factor 0.038 cfm/Btuh
Static pressure 0.60 in H2O
Space thermostat

Efficiency 0 SEER
Sensible cooling 0 Btuh
Latent cooling 0 Btuh
Total cooling 0 Btuh
Actual air flow 1861 cfm
Air flow factor 0.046 cfm/Btuh
Static pressure 0.60 in H2O
Load sensible heat ratio 0.89

ROOM NAME	Area (ft²)	Htg load (Btuh)	Clg load (Btuh)	Htg AVF (cfm)	Clg AVF (cfm)
Unfinished Bsmt	1001	4927	962	186	44
Media Closet	56	505	33	19	1
Bsmt Pwdr	78	278	14	11	1
Pwdr	34	258	79	10	4
WIC	47	1309	1022	50	47
Study	216	2624	2465	99	113
Foyer	70	1799	1863	68	85
Family Room	517	2927	3655	111	167
Kitchen	267	2448	2605	93	119
Dining Room	315	5953	7910	225	362
Mud Room	76	3222	980	122	45
Bedroom 2	198	2315	2816	88	129
WIC 2	30	947	785	36	36
Hall Bath	63	678	257	26	12
Hall A	82	96	127	4	6
Laundry	70	1391	1563	53	71

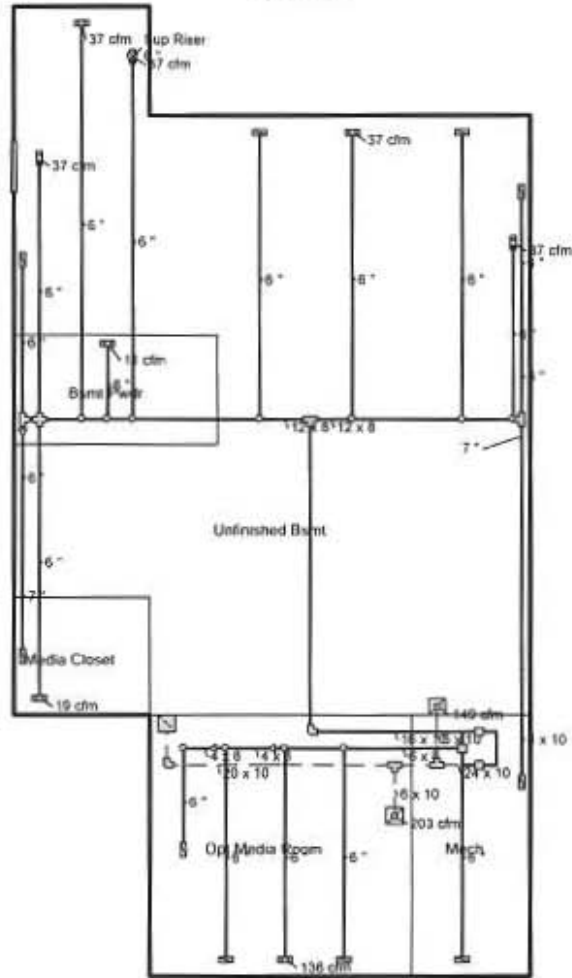
Calculations approved by ACCA to meet all requirements of Manual J 8th Ed.

O. Clo		70	406	125	15	6
Owners Suite A		199	672	1801	25	82
Pantry		13	0	0	0	0
Loft		461	4636	3204	175	146
Loft Stairs		95	1435	1008	54	46
Owners Suite B		140	2467	2007	93	92
Hall B		115	524	164	20	7
WIC 3		48	3	3	0	0
Bath 3		51	624	754	24	34
Attic Access		30	0	0	0	0
Bedroom 3		188	1256	2118	48	97
Owners Bath		149	1906	995	72	45
Opt Media Room		240	3589	1408	136	64
Mech		109	0	0	0	0
Entire House	d	5024	49196	40723	1861	1861
Other equip loads			0	0		
Equip. @ 1.02 RSM				41537		
Latent cooling				5252		
TOTALS		5024	49196	46789	1861	1861

Calculations approved by ACCA to meet all requirements of Manual J 8th Ed.



Basement



Job #: Maple Lawn Cottage-A
Performed by Jordan Claar for:
Maple Lawn Cottage-A

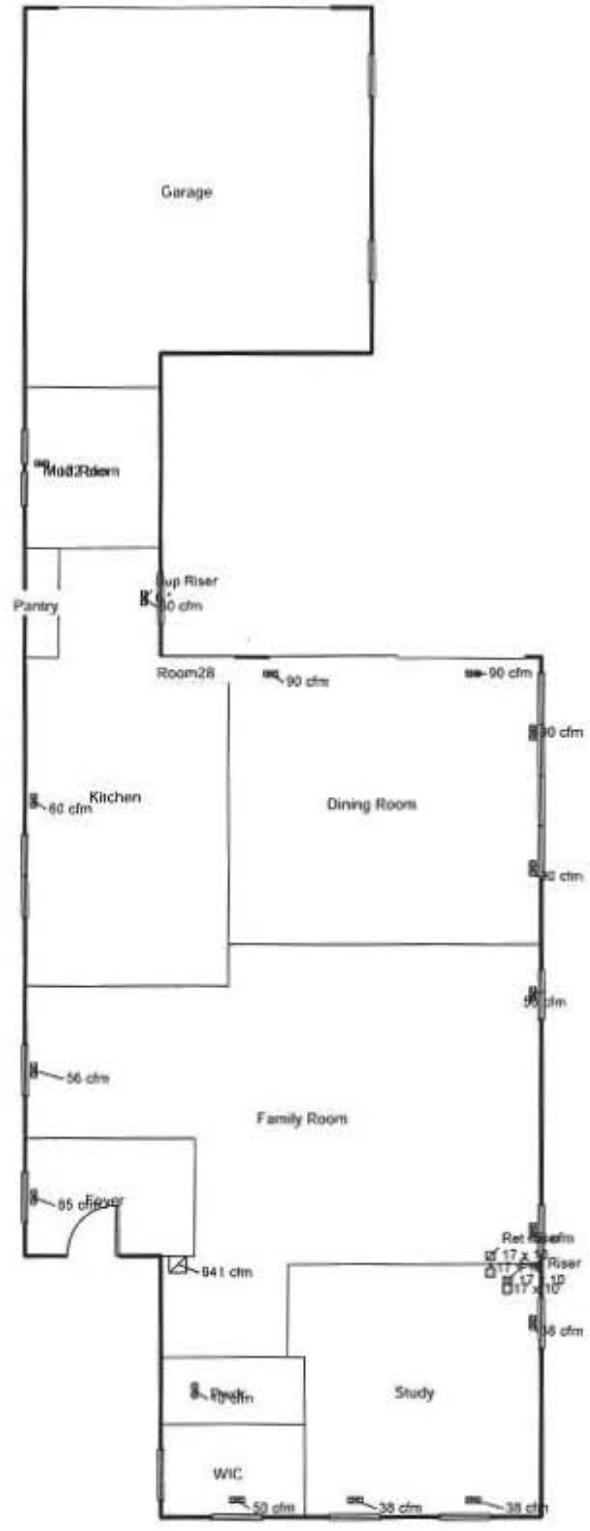
MD

Scale: 1 : 129

Page 1
Right-Suite® Universal 2015
15.0.24 RSU03141
2016-May-04 07:29:10
...mes Maple Lawn Cottage -loft.rup



First Floor



Job #: Maple Lawn Cottage-A
Performed by Jordan Claar for:
Maple Lawn Cottage-A

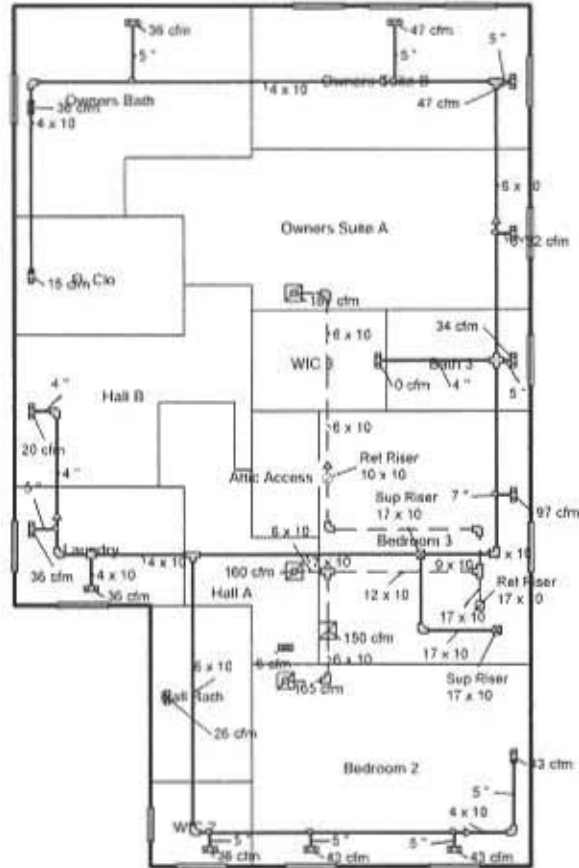
MD

Scale: 1 : 129

Page 2
Right-Suite® Universal 2015
15.0.24 RSU03141
2016-May-04 07:29:10
...mes Maple Lawn Cottage -loft.rup



Second Floor



Job #: Maple Lawn Cottage-A
Performed by Jordan Claar for:
Maple Lawn Cottage-A

MD

Scale: 1 : 129
Page 3
Right-Suite© Universal 2015
15.0.24 RSU03141
2016-May-04 07:29:10
...mes Maple Lawn Cottage -loft.rup

