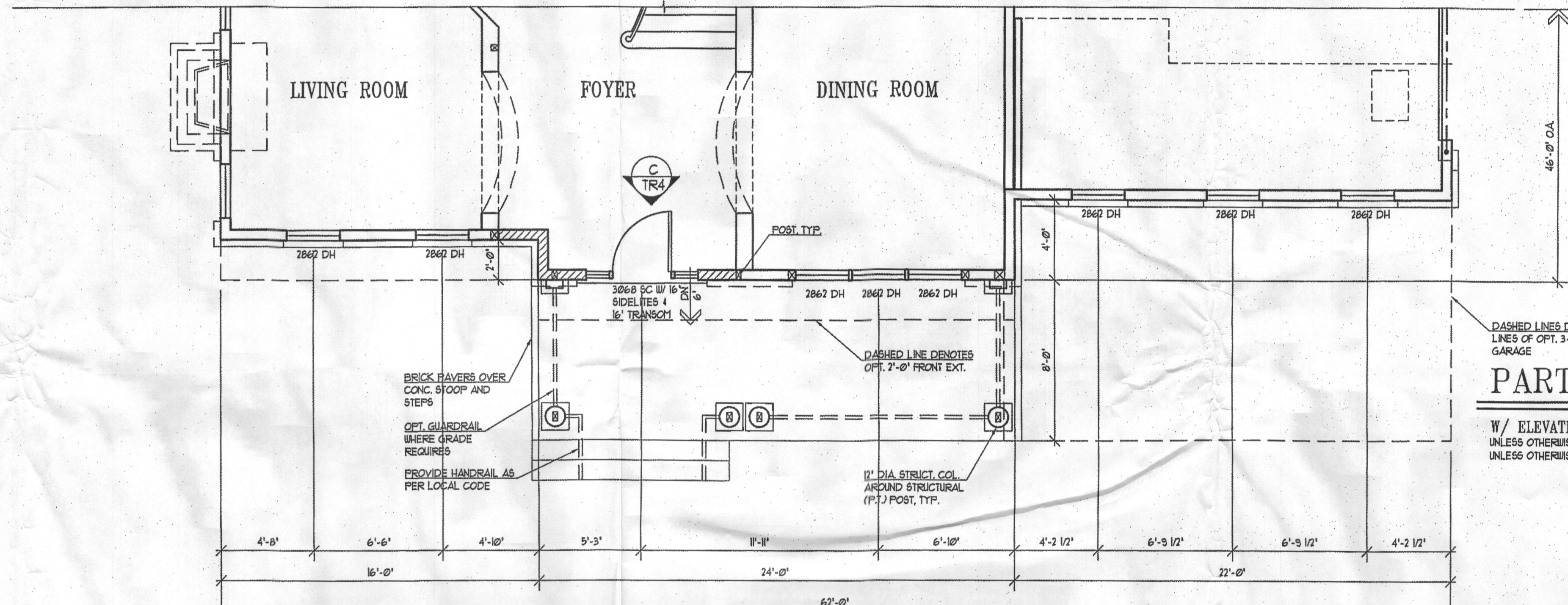


FOR PERMIT USE ONLY

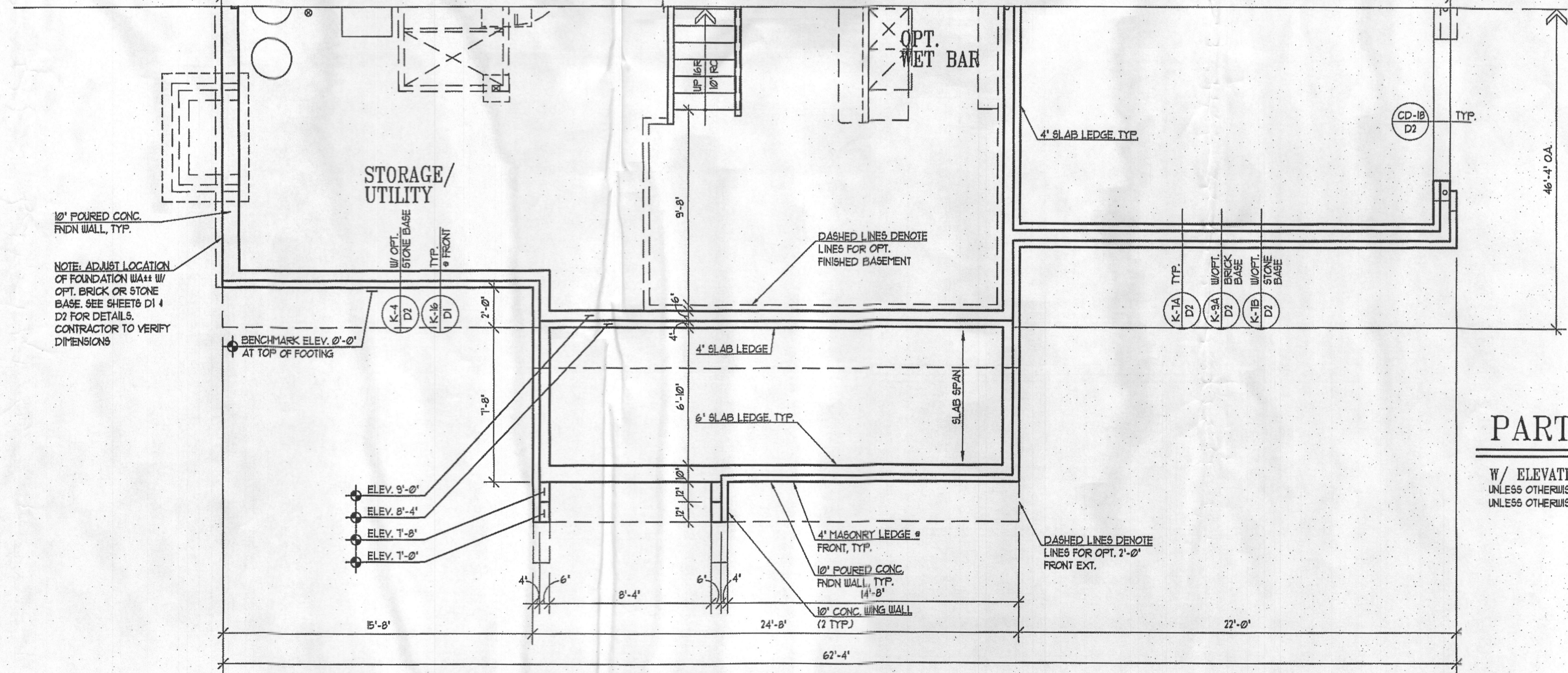
PARTIAL UPPER FLOOR PLAN

W/ ELEVATION J
 UNLESS OTHERWISE NOTED ALL INTERIOR PARTITIONS TO BE 3/2"
 UNLESS OTHERWISE NOTED WINDOW HEAD HEIGHT TO BE 1'-0" ASF AT FRONT AND 1'-4" ASF. @ SIDES AND REAR
 1/4" = 1'-0"
 REFER TO STANDARD UPPER FLOOR PLAN FOR INFORMATION NOT SHOWN OR LISTED ON PARTIALS



PARTIAL LOWER FLOOR PLAN

W/ ELEVATION J
 UNLESS OTHERWISE NOTED ALL INTERIOR PARTITIONS TO BE 3/2"
 UNLESS OTHERWISE NOTED WINDOW HEAD HEIGHT TO BE 8'-0" ASF.
 1/4" = 1'-0"
 REFER TO STANDARD LOWER FLOOR PLAN FOR INFORMATION NOT SHOWN OR LISTED ON PARTIALS



PARTIAL BASEMENT PLAN

W/ ELEVATION J
 UNLESS OTHERWISE NOTED ALL INTERIOR PARTITIONS TO BE 3/2"
 UNLESS OTHERWISE NOTED WINDOW HEAD HEIGHT TO BE 6'-8" AT O.S.
 1/4" = 1'-0"
 REFER TO STANDARD BSMT/FNDN PLAN FOR INFORMATION NOT SHOWN OR LISTED ON PARTIALS

Date	
AC. 03/07/16 CS	
P.S. 03/04/16 AT	

Project Number: 13091-12
ASHBROOKE MITCHELL BEST HOMES

Architect

SUTTON YANTIS ASSOCIATES ARCHITECTS
 8300 Boone Blvd., Tel. 703.734.9753
 Vienna, VA 22182 Fax. 703.847.0171
 www.syaa.com

Sheet Number
12