

**PART'L FOUNDATION/BASEMENT PLAN**

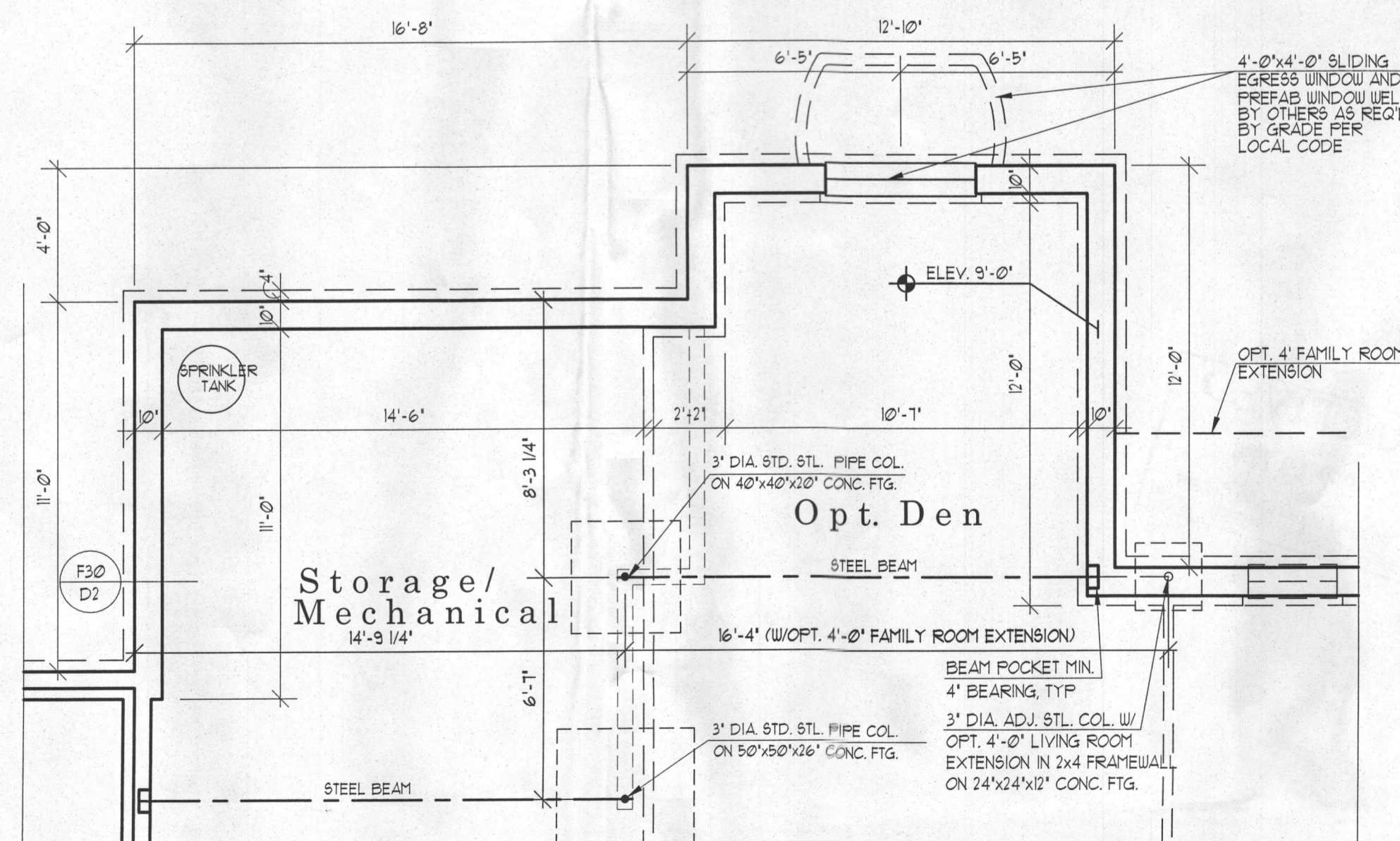
**W/OPT. 3 CAR SIDELOAD GARAGE & OPT. HOME OFFICE /IN-LAW SUITE**

UNLESS OTHERWISE NOTED ALL INTERIOR PARTITIONS TO BE 3/2"

1/4" = 1'-0"

**ADJUSTABLE STEEL COLUMNS**  
 THE FOLLOWING ARE APPROVED 1/2 GAUGE (10.10 IN) ADJUSTABLE STEEL COLUMNS FOR USE AS SPECIFIED AS 4" DIA. STL. COL. IN THESE CONSTRUCTION DRAWINGS:  
 1) AFCC - 1" DIA. ADJUSTABLE COLUMN ICC-ES REPORT: ESR-1492  
 2) AKRON - FIXED 4" ADJUSTABLE COLUMN ICC-ES REPORT: ESR-161  
 3) MARSHALL - EXTEND-O-COLUMN ATI-ES CODE COMPLIANCE REPORT: CORR-0111

NOTE: FOR INFORMATION NOT SHOWN IN PARTIALS, SEE STANDARD FOUNDATION/BASEMENT PLAN LOWER FLOOR PLAN AND 3 CAR SIDELOAD GARAGE PLANS

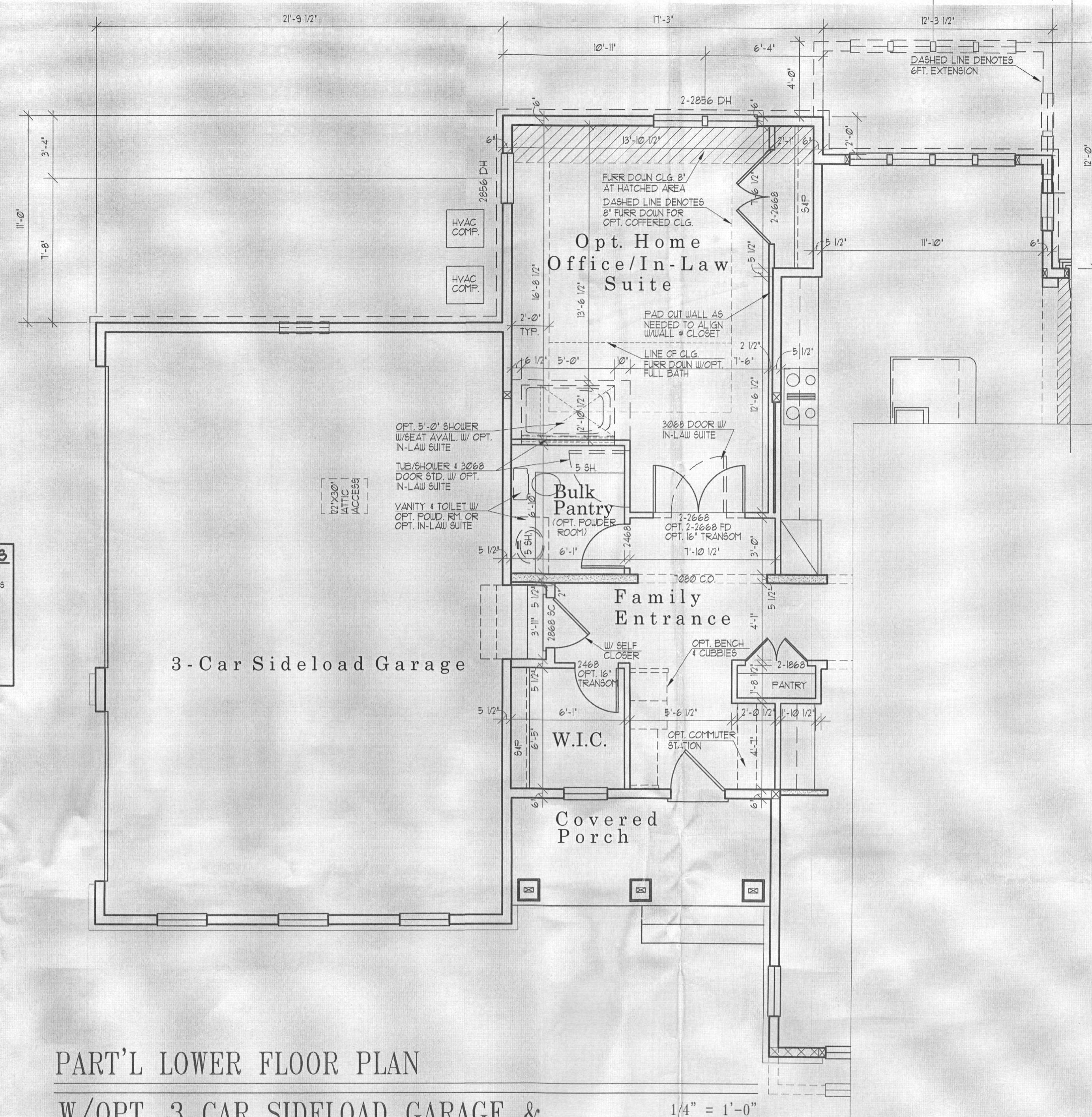


**PART'L FOUNDATION/BASEMENT PLAN**

**W/OPT. HOME OFFICE / IN-LAW SUITE & 6 FT. EXTENSION**

UNLESS OTHERWISE NOTED ALL INTERIOR PARTITIONS TO BE 3/2"

1/4" = 1'-0"



**PART'L LOWER FLOOR PLAN**

**W/OPT. 3 CAR SIDELOAD GARAGE & OPT. HOME OFFICE /IN-LAW SUITE (NOT AVAILABLE W/OPT. BONUS ROOM)**

UNLESS OTHERWISE NOTED ALL INTERIOR PARTITIONS TO BE 3/2"  
 UNLESS OTHERWISE NOTED WINDOW HEAD HEIGHT TO BE 8'-0" A.S.F.  
 UNLESS OTHERWISE NOTED PROVIDE 2-2x6 POSTS BETWEEN ALL MULTIPLE WINDOWS

1/4" = 1'-0"

Date	REV.	BY	CHK.
AC. 10/15/07	BEB		
AC. 11/07/07	JT		
AC. 12/07/07	JT		
P.S. 02/07/08	JG		
P.S. 06/07/08	JG		
REV. 07/07/08	MUCS		
REV. 07/07/08	JT		
REV. 08/07/08	JG		
REV. 08/07/08	JG		
REV. 08/07/08	JG		

Project Number: 0706

**HAWTHORNE**

**MITCHELL BEST HOMES**

Architect

**SUTTON YANTIS ASSOCIATES ARCHITECTS**

8500 Beaver Dam Rd. Tel: 703.776.0700  
 Vienna, VA 22182 Fax: 703.847.0171

www.svaa.com

Sheet Number

7