

ELIMINARY

# APPLICATION

A 18677

## SEWAGE DISPOSAL TESTING

P \_\_\_\_\_

STATE OF MARYLAND - DEPARTMENT OF HEALTH AND MENTAL HYGIENE

HOWARD COUNTY HEALTH DEPARTMENT  
ENVIRONMENTAL HEALTH SERVICES  
P. O. BOX 476, ELLICOTT CITY, MARYLAND 21043  
TELEPHONE: 465-8000, EXT. 356

DISTRICT 5th

DATE 6/29/73

TO: THE COUNTY HEALTH OFFICER  
ELLICOTT CITY, MARYLAND

I, HEREBY, APPLY FOR THE NECESSARY TEST IN ORDER TO CONSTRUCT (OR RECONSTRUCT) A SEWAGE DISPOSAL SYSTEM.

PROPERTY OWNER Edwin G. Willson

ADDRESS 14507 Gilpin Road, Silver Spring, Md. 20906 PHONE 774-9698

PROPERTY LOCATION:

SUBDIVISION Country Farm Lane S/D LOT NO. Parcel 15

ROAD AND DESCRIPTION Country Farm Lane

SIZE OF LOT 6.870 acres TYPE BLDG. 3 or 4 bedrooms  
NUMBER OF BEDROOMS \_\_\_\_\_

IF NOT SINGLE RESIDENCE DESCRIBE \_\_\_\_\_

THE SYSTEM INSTALLED UNDER THIS APPLICATION IS ACCEPTABLE ONLY UNTIL PUBLIC FACILITIES BECOME AVAILABLE.

SIGNATURE OF APPLICANT /s/ Edwin G. Willson

APPROVED BY \_\_\_\_\_ FOR \_\_\_\_\_ DATE \_\_\_\_\_  
(KIND OF SYSTEM)

REJECTED BY \_\_\_\_\_ FOR \_\_\_\_\_ DATE \_\_\_\_\_  
(KIND OF SYSTEM)

HOLD PENDING FURTHER TESTS \_\_\_\_\_ DATE \_\_\_\_\_

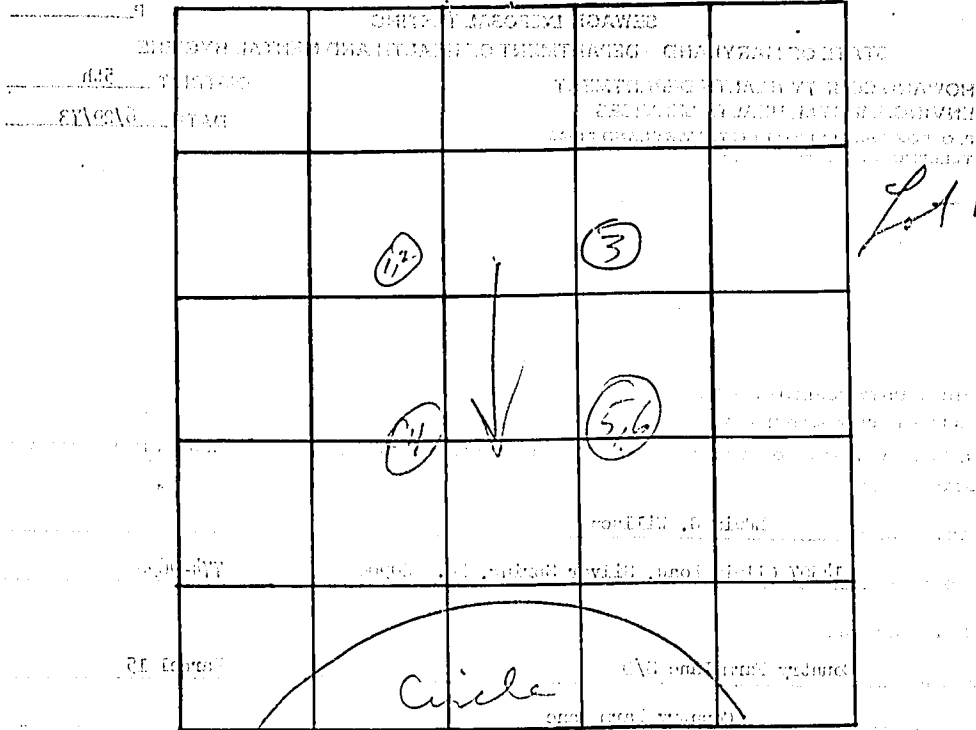
REASONS FOR REJECTION OR HOLDING \_\_\_\_\_

# THIS IS NOT A PERMIT

Y0001 A

# APPLICATION

DATE



*Lot 15*

INDICATE NORTH - NAME ADJOINING ROADWAY AS BASE LINE.

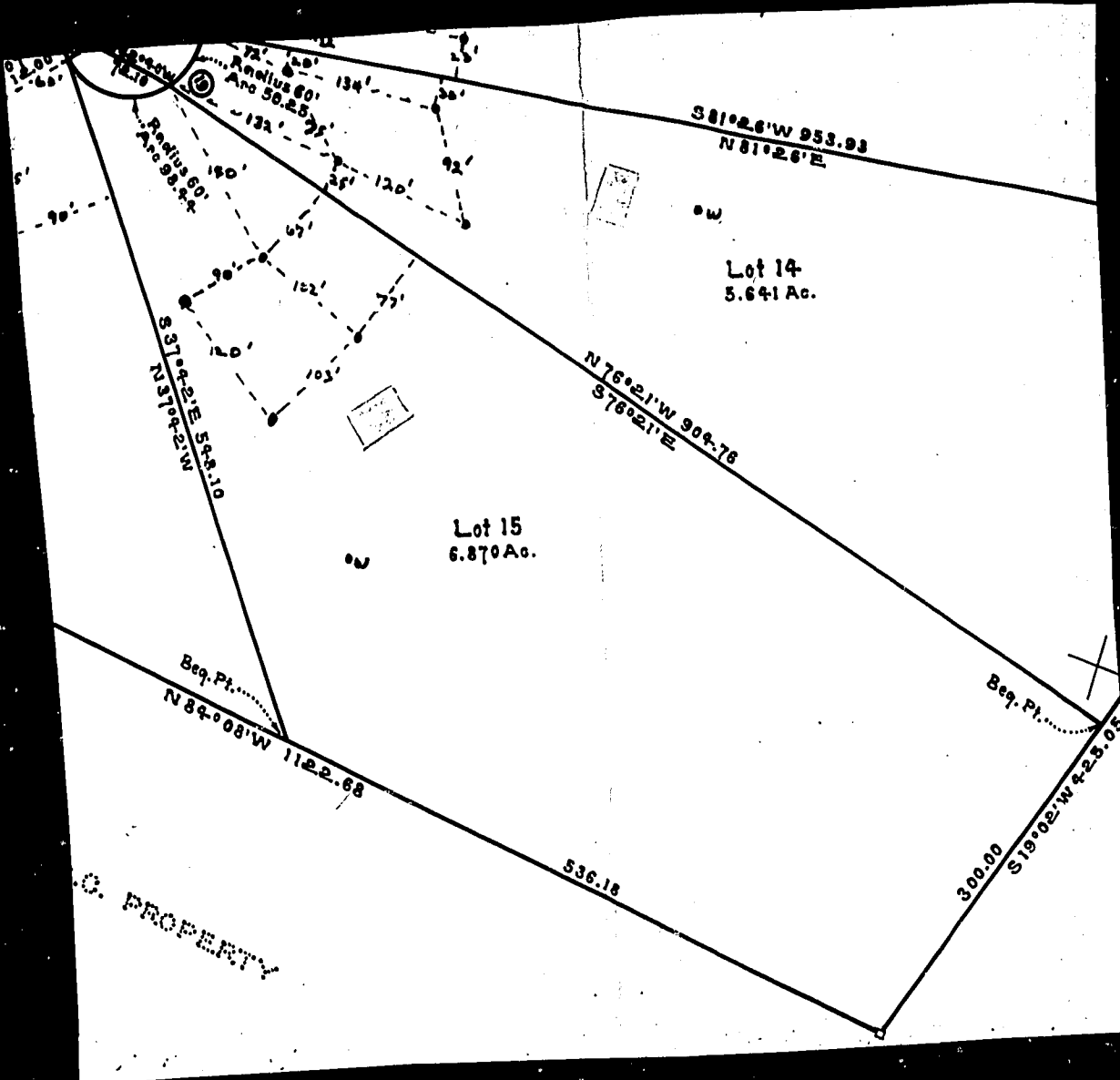
DATE	TEST NO.	DEPTH	PRE-WET		TEST - 1" DROP		TIME
			START	STOP	START	STOP	
7/4/73	1	3 1/2	10:24	10:25	10:25	10:27	2
	2	10	10:31	5 gal		10:38	7
	3	11 1/2	Visual		dem to 18"		
	4	11	Visual		" "		
	5	3	10:44	10:47	10:47	10:58	11
	6	11	10:40	10:43	10:43	10:50	7

9  
13  
29  
E=8  
Inlet  
@ 3 1/2'

REMARKS

TYPE OF SOIL

*sandy soil*



S81°26'W 953.03  
N81°26'E

Lot 14  
5.641 Ac.

N76°21'W 904.76  
S76°21'E

Lot 15  
6.870 Ac.

S37°42'E 544.10  
N37°42'W

Beq. Pt. ....  
N84°08'W 1122.68

Beq. Pt. ....  
300.00  
S19°02'W 225.03

536.18

G. PROPERTY

Radius 60'  
Arc 98.44'

72° 12.0'  
Radius 60'  
Arc 50.25'

132'

150'

102'

73'

103'

120'

134'

134'

134'

134'

134'

134'

134'

134'

134'

134'

134'

134'

134'

134'

134'

134'

134'

134'

134'

134'

134'

134'

134'

134'

134'

134'

134'

134'

134'

134'

134'

134'

134'

134'

134'

134'

134'

134'

134'

134'

134'

134'

134'

134'

134'

134'

134'

134'

134'

134'

134'

134'

134'

134'

134'

134'

134'

134'

134'

134'

134'

134'

134'

134'

134'

134'

134'

134'

134'

134'

134'

134'

134'

134'

134'

134'

134'

134'

134'

134'

134'

134'

134'

134'

134'

134'

134'

134'

134'

134'

134'

134'

134'

134'

134'

134'

134'

134'

134'

134'

134'

134'

134'

134'

134'

134'

134'

134'

134'

134'

134'

134'

134'

134'

134'

134'

134'

134'

134'

134'

134'

134'

134'

134'

134'

134'

134'

134'

134'

134'

134'

134'

134'

134'

134'

134'

134'

134'

134'

134'

134'

134'

134'

134'

134'

134'

134'

134'

134'

134'

134'

134'

134'

134'

134'

134'

134'

134'

134'

134'

134'

134'

134'

134'

134'

134'

134'

134'

134'

134'

134'

134'

134'

134'

134'

134'

134'

134'

134'

134'

134'

134'

134'

134'

134'

134'

134'

134'

134'

134'

134'

134'

134'

134'

134'

134'

134'

134'

134'

134'

134'

134'

134'

134'

134'

134'

134'

134'

134'

134'

134'

134'

134'

134'

134'

134'

134'

134'

134'

134'

134'

134'

134'

134'

134'

134'

134'

134'

134'

134'

134'

134'

134'

134'

134'

134'

134'

134'

134'

134'

134'

134'

134'

134'

134'

134'

134'

134'

134'

134'

134'

134'

134'

134'

134'

134'

134'

134'

134'

134'

134'

134'

134'

134'

134'

134'

134'

134'

134'

134'

134'

134'

134'

134'

134'

134'

134'

134'

134'

134'

134'

134'

134'

134'

134'

134'

134'

134'

134'

134'

134'

134'

134'

134'

134'

134'

134'

134'

134'

134'

134'

134'

134'

134'

134'

134'

134'

134'

134'

134'