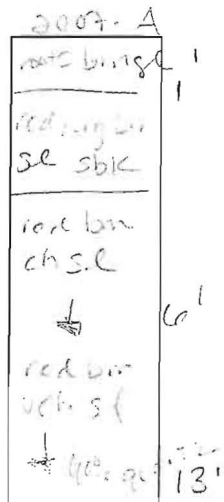
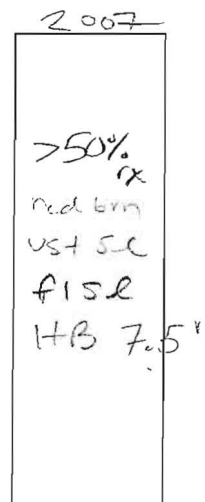
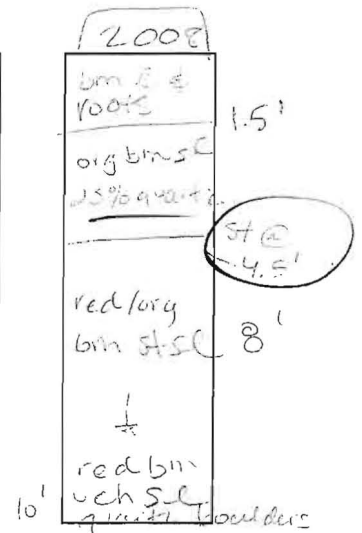
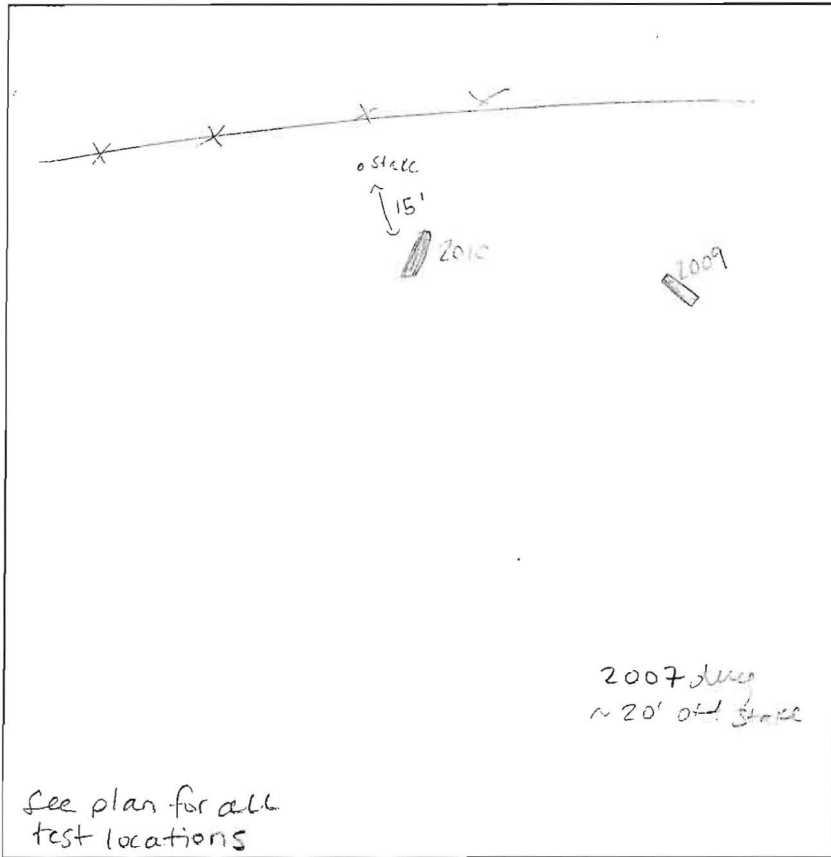
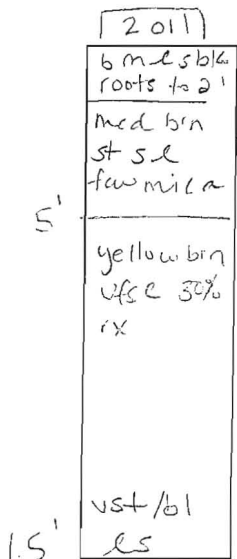
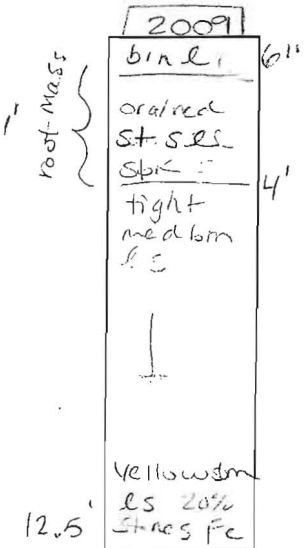
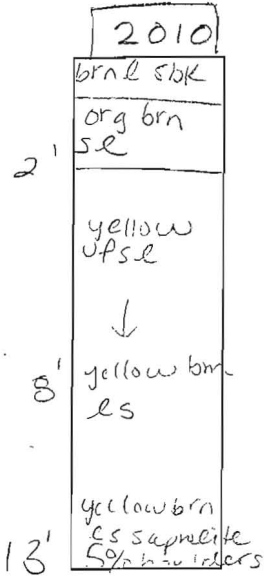


A/P



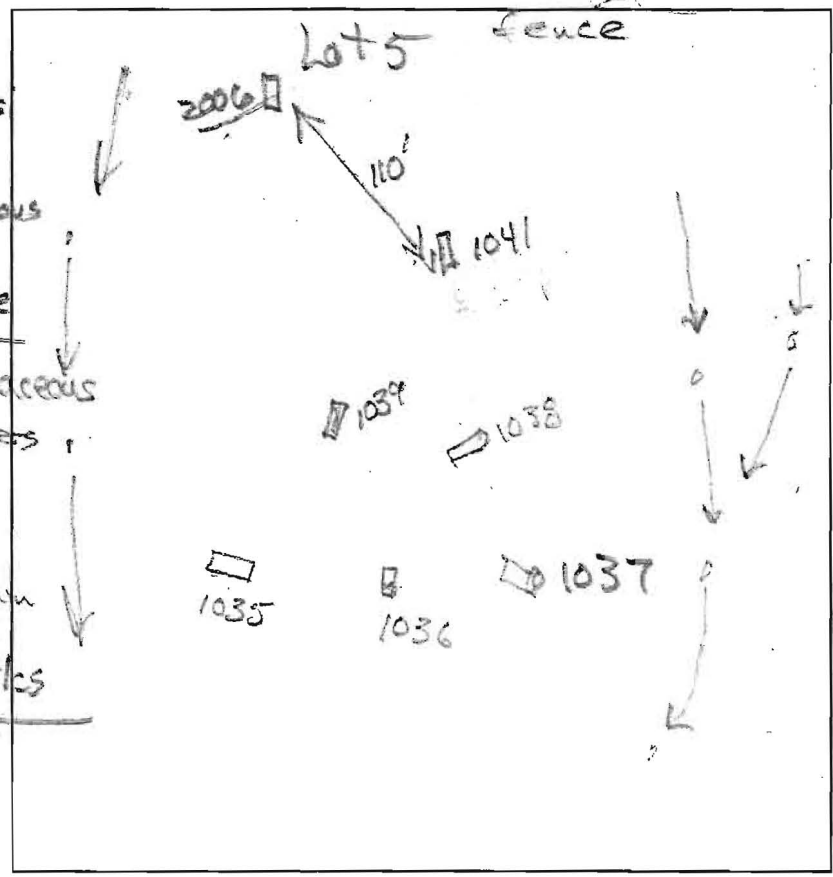
DATE	TEST #	DEPTH	START	BREAK 1" DROP	STOP 2" DROP	TIME OF 2ND INCH	PIF/H
10-25-10	2010	3' 2" / 13'	9:16	9:18	9:21	3	P
	2009	3' / 12.5'	∅	1:34	3:40	2+	P
	2011	3.5' / 11.5'	∅	1:43	4:55	~3	P
	2008	3.5' / 10'	∅	6:11	15:07	~9	P
	2007	7.5'	VISUAL				F
	2007A	4' / 12'	10:47	10:58	11:10	12	P

REMARKS Parcel 282 1' x 1' hole for test 2010 power line hit - 2009
 SANITARIAN HS BACKHOE Chuck Zapp OTHERS Zach (level land)
 TEST HOLES USED IN SDA _____ AVG. PERC TIME _____ SQ. FT/BR _____
 TRENCH WIDTH _____ INLET DEPTH _____ MAX. BOT DEPTH _____ EFFECTIVE SW _____

Parcel 282

A/P

1038
 dk grey brns
 1.2' brn scl
 brn sl micaceous
 2.3' fibrous
 micaceous
 3.7' brn vby sl micaceous
 60% boulders
 7.8' R
 1041
 dk brn loam
 2' brn st scl
 2.8' yel-red xst lcs
 R
 RECEIVED
 COUNTY HEALTH DEPT.
 COUNTY HEALTH HEALTH
 ENVIRONMENTAL HEALTH
 2010 MR - 8 PM 4:52
 1036
 dk brn loam
 brn scl
 1.5' yel brn st sl
 3.5' brn vby sl
 6' R
 2006
 dk brn loam
 brn scl
 1.3' brn sl
 few stones
 3.7' vby ls
 yel brn
 60% Rock
 7.8' R



1037
 1' dk grey-brn loam
 brn st sl, ss
 2.3' brn & yel-red
 4' sl
 pale yellow sl
 few stones
 6'
 pale yel ss
 7.7' brn st sl
 grey rock (gnss)
 common Mn coating
 10' dk grey aprt li
 gr/s (gnss)
 13' dr
 1035
 dk brn loam
 brn scl
 yel-brn loam
 4'
 brn st sl
 clay in places
 9'
 dk brn sl
 micaceous
 12.5' yel sl
 1039
 dk brn loam
 brn scl
 1.5' brn st sl
 heavy
 3.9' dk brn
 vst sl
 brn st sl
 7.5' yel red
 vby xst lcs
 9.3' R

DATE	TEST #	DEPTH	START	BREAK 1" DROP	STOP 2" DROP	TIME OF 2ND INCH	P/F/H
5/26/10	1037	4.9' / 13'	10:14	10:21	10:29	8	P
5/26/10	1035	6' / 13'	10:31	10:57	1:41	NA	F
5/26/10	2006	3.7'	Visual			>50% (boulders) rock	F
5/26/10	1041	2.8'	Visual			regu sl 2.8' >65% rock	F
5/26/10	1039	7.5'	Visual			50-60% rock heavy coarse sand	F
5/26/10	1038	4'	Visual			60% boulders	F
5/26/10	1036	3.5'	Visual			regu sl, 6'	F

REMARKS _____
 SANITARIAN RR BACKHOE Mike Johnson OTHERS Mike Johnson, Tim Sasiulski
 TEST HOLES USED IN SDA _____ AVG. PERC TIME _____ SQ. FT/BR _____
 TRENCH WIDTH _____ INLET DEPTH _____ MAX. BOT DEPTH _____ EFFECTIVE SW _____