

14134 Brighton Dam

(A)

dk brn sl
1 1/2' sbk 0.5'

brn sl (heavy)
2' m sbk

brn sl
1.5' 7' sbk

2'

red, yellow, pale yel & blk
chls, micaceous
few stones

15%

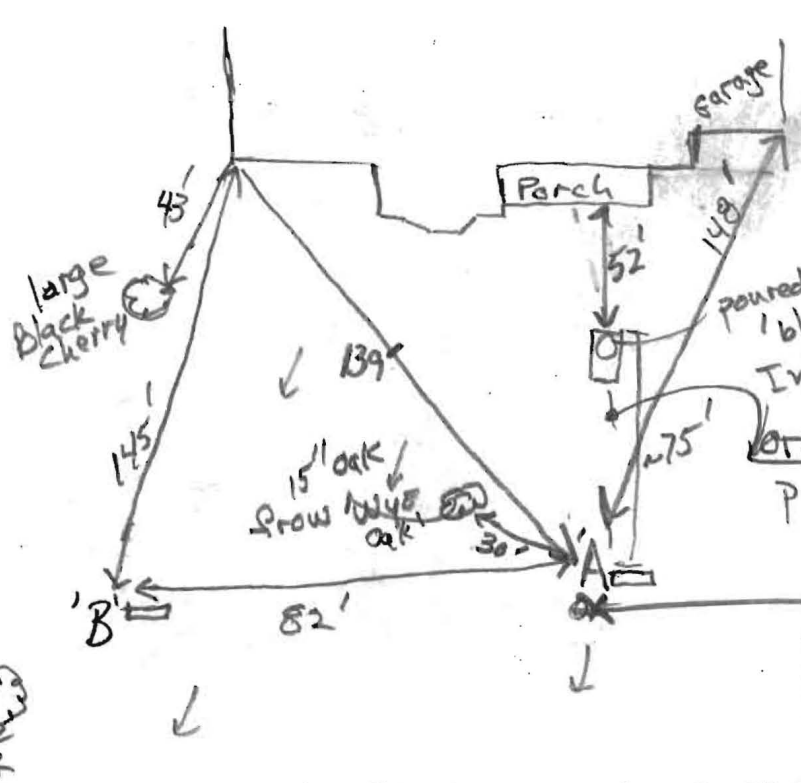
red, yellow & brn
chls micaceous

30%

7'

Stopped
- coarse soil

large oak



START *
REPAIR
TRENCH
HERE.

(B)

dk brn sl
2 1/2' sbk 0.6'

brn sl (heavy)
2' m sbk 1.7'

brn sl
1' m sbk

24'

yel-red & brn
sl, many mica
few channers

3.6'

yel-red & brn
lfs, many fine
mica
few coarse roots

5'

H. brn ls
7% - 10% stone
& channers

8'

Stopped
coarse
sands

DATE	TEST #	DEPTH	START	BREAK 1" DROP	STOP 2" DROP	TIME OF 2ND INCH	P/F/H
6/22/12	A	26 1/2'	0	1.3	4.3	3	P
6/22/12	B	8'	Visual	sidewall 1' oak 1.5'-3'	1.2 gpd/32'		P

REMARKS: Repair requested. 'Homemade' tank is blocked; orange burg pipe out is crushed.

SANITARIAN: RB BACKHOE: Kenny OTHERS:

TEST HOLES USED IN SDA: _____ AVG. PERC TIME: 3 SQ. FT/BR: _____

TRENCH WIDTH: 3 INLET DEPTH: 1.5 MAX. BOT DEPTH: 3' EFFECTIVE S/W: _____