



Load Short Form
Entire House
Supreme Air llc

Job:
 Date: Aug 05, 2014
 By:

6203 Collinsway rd, Ballimore, MD 21228 Phone: 410-788-1114 Fax: 410-522-1178 Email: frankS@supremeairllc.com Web: www.supremeairllc.com

Project Information

For: Ronald Wowkany
 5248 ILEX Way, Dayton, Md 21036

Design Information

	Htg	Clg		Infiltration
Outside db (°F)	13	94	Method	Simplified
Inside db (°F)	70	75	Construction quality	Semi-tight
Design TD (°F)	57	19	Fireplaces	0
Daily range	-	M		
Inside humidity (%)	50	50		
Moisture difference (gr/lb)	47	36		

HEATING EQUIPMENT

COOLING EQUIPMENT

Make Water Furnace
 Trade 7 Series
 Model NVV036A1
 AHRI ref 5440731

Make Water Furnace
 Trade 7 Series
 Cond NVV036A1
 Coil
 AHRI ref 5440731

Efficiency 0 COP
 Heating input 0 kW
 Heating output 0 Btuh
 Temperature rise 0 °F
 Actual air flow 527 cfm
 Air flow factor 0.019 cfm/Btuh
 Static pressure 0 in H2O
 Space thermostat

Efficiency 0 EER
 Sensible cooling 0 Btuh
 Latent cooling 0 Btuh
 Total cooling 0 Btuh
 Actual air flow 527 cfm
 Air flow factor 0.046 cfm/Btuh
 Static pressure 0 in H2O
 Load sensible heat ratio 0.92

ROOM NAME	Area (ft²)	Htg load (Btuh)	Clg load (Btuh)	Htg AVF (cfm)	Clg AVF (cfm)
Room1	400	2401	207	46	9
Room2	1000	5744	992	111	45
Room4	1000	8537	4070	165	186
Room5	1000	10668	6265	206	286
Entire House	3400	27350	11534	527	527
Other equip loads		0	0		
Equip. @ 0.99 RSM			11407		
Latent cooling			1035		
TOTALS	3400	27350	12443	527	527

Calculations approved by ACCA to meet all requirements of Manual J 8th Ed.



Project Summary
Entire House
Supreme Air IIc

Job:
 Date: Aug 05, 2014
 By:

6203 Collinsway rd, Baltimore, MD 21228 Phone: 410-788-1114 Fax: 410-522-1178 Email: franks@supremeairllc.com Web: www.supremeairllc.com

Project Information

For: Ronald Wowkanyn
 5248 ILEX Way, Dayton, Md 21036

Notes:

Design Information

Weather: Baltimore Blt-Washngtn Int'l, MD, US

Winter Design Conditions

Outside db 13 °F
 Inside db 70 °F
 Design TD 57 °F

Summer Design Conditions

Outside db 94 °F
 Inside db 75 °F
 Design TD 19 °F
 Daily range M
 Relative humidity 50 %
 Moisture difference 36 gr/lb

Heating Summary

Structure 27350 Btuh
 Ducts 0 Btuh
 Central vent (0 cfm) 0 Btuh
 Humidification 0 Btuh
 Piping 0 Btuh
 Equipment load 27350 Btuh

Sensible Cooling Equipment Load Sizing

Structure 11534 Btuh
 Ducts 0 Btuh
 Central vent (0 cfm) 0 Btuh
 Blower 0 Btuh
 Use manufacturer's data n
 Rate/swing multiplier 0.99
 Equipment sensible load 11407 Btuh

Infiltration

Method Simplified
 Construction quality Semi-tight
 Fireplaces 0

	Heating	Cooling
Area (ft ²)	3400	3400
Volume (ft ³)	19800	19800
Air changes/hour	0.25	0.13
Equip. AVF (cfm)	83	43

Latent Cooling Equipment Load Sizing

Structure 1035 Btuh
 Ducts 0 Btuh
 Central vent (0 cfm) 0 Btuh
 Equipment latent load 1035 Btuh
 Equipment total load 12443 Btuh
 Req. total capacity at 0.70 SHR 1.4 ton

Heating Equipment Summary

Make Water Furnace
 Trade 7 Series
 Model NVV036A1
 AHRI ref 5440731

Efficiency	0 COP
Heating input	0 kW
Heating output	0 Btuh
Temperature rise	0 °F
Actual air flow	527 cfm
Air flow factor	0.019 cfm/Btuh
Static pressure	0 in H2O
Space thermostat	

Cooling Equipment Summary

Make Water Furnace
 Trade 7 Series
 Cond NVV036A1
 Coil
 AHRI ref 5440731

Efficiency	0 EER
Sensible cooling	0 Btuh
Latent cooling	0 Btuh
Total cooling	0 Btuh
Actual air flow	527 cfm
Air flow factor	0.046 cfm/Btuh
Static pressure	0 in H2O
Load sensible heat ratio	0.92

Calculations approved by ACCA to meet all requirements of Manual J 8th Ed.



Right-Suite® Universal 2013 13.0.12 RSU16744

2014-Sep-24 12:17:24

...Frank Sullivan\Sold\Wowkanyn, RonWowkanyn.rup Calc = MJ8 Front Door faces: N

Page 1



Right-J® Worksheet
Entire House
Supreme Air IIc

Job:
 Date: Aug 05, 2014
 By:

6203 Collinsway rd, Baltimore, MD 21228 Phone: 410-788-1114 Fax: 410-522-1178 Email: frankS@supremeairllc.com Web: www.supremeairllc.com

1 Room name		Entire House						Room1						
2 Exposed wall		410.0 ft						60.0 ft						
3 Room height		8.3 ft						8.0 ft						
4 Room dimensions		3400.0 ft²						20.0 x 20.0 ft						
5 Room area		400.0 ft²						400.0 ft²						
6	Ty	Construction number	U-value (Btuh/ft²·°F)	Or	HTM (Btuh/ft²)		Area (ft²) or perimeter (ft)		Load (Btuh)		Area (ft²) or perimeter (ft)		Load (Btuh)	
					Heat	Cool	Gross	N/P/S	Heat	Cool	Gross	N/P/S	Heat	Cool
11	W	12E-0sw	0.068	n	3.88	1.49	680	603	2340	900	0	0	0	0
		1D-c2ow	0.570	n	32.55	21.67	77	0	2517	1676	0	0	0	0
		15A13-0fcw-6	0.082	n	3.10	0.22	480	430	1335	95	160	160	523	54
	G	1D-c2ow	0.570	n	32.55	21.67	8	0	260	173	0	0	0	0
		11D0	0.390	n	22.27	12.11	42	42	935	509	0	0	0	0
		12E-0sw	0.068	e	3.88	1.49	245	237	920	354	0	0	0	0
	W	1D-c2ow	0.570	e	32.55	63.71	8	0	260	510	0	0	0	0
		15A13-0fcw-6	0.082	e	3.27	0.34	200	200	654	68	160	160	523	54
		12E-0sw	0.068	s	3.88	1.49	680	578	2244	863	0	0	0	0
	W	1D-c2ow	0.570	s	32.55	33.19	74	0	2408	2456	0	0	0	0
		11D0	0.390	s	22.27	12.11	28	28	624	339	0	0	0	0
		15A13-0fcw-6	0.082	s	3.27	0.34	480	480	1569	163	160	160	523	54
	W	12E-0sw	0.068	w	3.88	1.49	425	425	1650	634	0	0	0	0
		15A13-0fcw-6	0.082	w	3.27	0.34	200	200	654	68	0	0	0	0
		16B-30ad	0.032	-	1.83	1.75	1000	1000	1827	1746	0	0	0	0
F	21A-24t	0.025	-	1.43	0.00	1400	1400	1999	0	400	400	571	0	
6	c) AED excursion								95					-1
	Envelope loss/gain							22197	10647			2140	162	
12	a) Infiltration							5153	887			261	45	
	b) Room ventilation							0	0			0	0	
13	Internal gains:		Occupants @	230		0			0	0		0	0	
			Appliances/other						0			0	0	
	Subtotal (lines 6 to 13)							27350	11534			2401	207	
	Less external load							0	0			0	0	
	Less transfer							0	0			0	0	
	Redistribution							0	0			0	0	
14	Subtotal							27350	11534			2401	207	
15	Duct loads					0%	0%	0	0		-0%	0%	0	0
	Total room load							27350	11534			2401	207	
	Air required (cfm)							527	527			46	9	

Calculations approved by ACCA to meet all requirements of Manual J 8th Ed.



Right-J® Worksheet

Entire House

Supreme Air llc

Job:
Date: Aug 05, 2014
By:

6203 Collinsway rd, Baltimore, MD 21228 Phone: 410-788-1114 Fax: 410-522-1178 Email: frankS@supremeairllc.com Web: www.supremeairllc.com

					Room2 110.0 ft 8.0 ft 40.0 x 25.0 ft 1000.0 ft ²				Room4 110.0 ft 9.0 ft 40.0 x 25.0 ft 1000.0 ft ²					
	Ty	Construction number	U-value (Btuh/ft ² ·°F)	Or	HTM (Btuh/ft ²)		Area (ft ²) or perimeter (ft)		Load (Btuh)		Area (ft ²) or perimeter (ft)		Load (Btuh)	
					Heat	Cool	Gross	N/P/S	Heat	Cool	Gross	N/P/S	Heat	Cool
6	W	12E-0sw	0.068	n	3.88	1.49	0	0	0	0	360	323	1253	482
	G	1D-c2ow	0.570	n	32.55	21.67	0	0	0	0	37	0	1215	809
	W	15A13-0fcw-6	0.082	n	3.10	0.22	320	270	812	41	0	0	0	0
	G	1D-c2ow	0.570	n	32.55	21.67	8	0	260	173	0	0	0	0
11	D	11D0	0.390	n	22.27	12.11	42	42	935	509	0	0	0	0
	W	12E-0sw	0.068	e	3.88	1.49	0	0	0	0	45	45	175	67
	G	1D-c2ow	0.570	e	32.55	63.71	0	0	0	0	0	0	0	0
	W	15A13-0fcw-6	0.082	e	3.27	0.34	40	40	131	14	0	0	0	0
	W	12E-0sw	0.068	s	3.88	1.49	0	0	0	0	360	299	1160	446
	G	1D-c2ow	0.570	s	32.55	33.19	0	0	0	0	33	0	1085	1106
	D	11D0	0.390	s	22.27	12.11	0	0	0	0	28	28	624	339
	W	15A13-0fcw-6	0.082	s	3.27	0.34	320	320	1046	109	0	0	0	0
	W	12E-0sw	0.068	w	3.88	1.49	0	0	0	0	225	225	874	336
	W	15A13-0fcw-6	0.082	w	3.27	0.34	200	200	654	68	0	0	0	0
	C	16B-30ad	0.032	-	1.83	1.75	0	0	0	0	0	0	0	0
	F	21A-24t	0.025	-	1.43	0.00	1000	1000	1428	0	0	0	0	0
6	c) AED excursion													114
	Envelope loss/gain								5266	910			6384	3699
12	a) Infiltration								478	82			2153	370
	b) Room ventilation								0	0			0	0
13	Internal gains:		Occupants @	230			0			0	0			0
			Appliances/other							0				0
	Subtotal (lines 6 to 13)								5744	992			8537	4070
	Less external load								0	0			0	0
	Less transfer								0	0			0	0
	Redistribution								0	0			0	0
14	Subtotal								5744	992			8537	4070
15	Duct loads						-0%	0%	0	0	-0%	0%	0	0
	Total room load								5744	992			8537	4070
	Air required (cfm)								111	45			165	186

Calculations approved by ACCA to meet all requirements of Manual J 8th Ed.



Right-J® Worksheet
Entire House
Supreme Air IIc

Job:
 Date: Aug 05, 2014
 By:

6203 Collinsway rd, Baltimore, MD 21228 Phone: 410-788-1114 Fax: 410-522-1178 Email: frankS@supremeairllc.com Web: www.supremeairllc.com

		Room5												
1	Room name			130.0 ft										
2	Exposed wall			8.0 ft				heat/cool						
3	Room height			40.0 x 25.0 ft										
4	Room dimensions			1000.0 ft ²										
5	Room area													
	Ty	Construction number	U-value (Btuh/ft ² ·°F)	Or	HTM (Btuh/ft ²)		Area (ft ²) or perimeter (ft)		Load (Btuh)		Area or perimeter		Load	
					Heat	Cool	Gross	N/P/S	Heat	Cool	Gross	N/P/S	Heat	Cool
6	W	12E-0sw	0.068	n	3.88	1.49	320	280	1087	418				
	G	1D-c2ow	0.570	n	32.55	21.67	40	0	1302	867				
	W	15A13-0fcw-6	0.082	n	3.10	0.22	0	0	0	0				
	G	1D-c2ow	0.570	n	32.55	21.67	0	0	0	0				
11	D	11D0	0.390	n	22.27	12.11	0	0	0	0				
	W	12E-0sw	0.068	e	3.88	1.49	200	192	745	287				
	G	1D-c2ow	0.570	e	32.55	63.71	8	0	260	510				
	W	15A13-0fcw-6	0.082	e	3.27	0.34	0	0	0	0				
	W	12E-0sw	0.068	s	3.88	1.49	320	279	1085	417				
	G	1D-c2ow	0.570	s	32.55	33.19	41	0	1324	1350				
	D	11D0	0.390	s	22.27	12.11	0	0	0	0				
	W	15A13-0fcw-6	0.082	s	3.27	0.34	0	0	0	0				
	W	12E-0sw	0.068	w	3.88	1.49	200	200	777	299				
	W	15A13-0fcw-6	0.082	w	3.27	0.34	0	0	0	0				
	C	16B-30ad	0.032	-	1.83	1.75	1000	1000	1827	1746				
	F	21A-24t	0.025	-	1.43	0.00	0	0	0	0				
6	c) AED excursion									-16				
	Envelope loss/gain								8407	5876				
12	a) Infiltration								2261	389				
	b) Room ventilation								0	0				
13	Internal gains:		Occupants @	230			0			0				
			Appliances/other							0				
	Subtotal (lines 6 to 13)								10668	6265				
	Less external load								0	0				
	Less transfer								0	0				
	Redistribution								0	0				
14	Subtotal								10668	6265				
15	Duct loads								0	0				
	Total room load								10668	6265				
	Air required (cfm)								206	286				

Calculations approved by ACCA to meet all requirements of Manual J 8th Ed.



wrightsoft

Right-Suite® Universal 2013 13.0.12 RSU16744

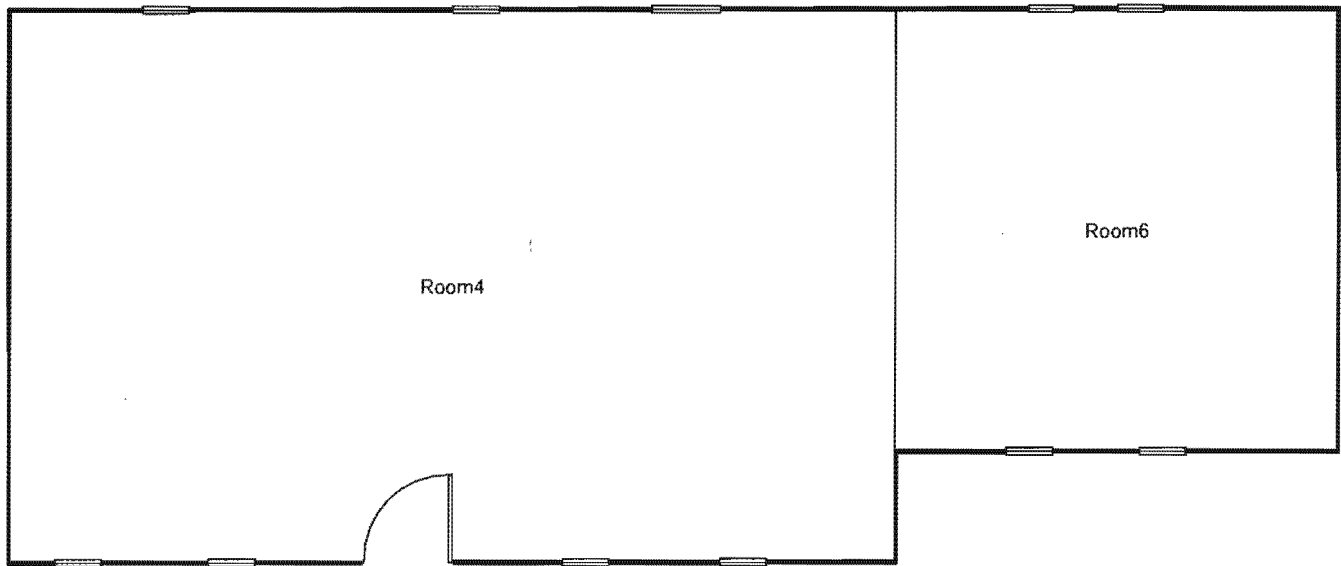
2014-Sep-24 12:17:24

...\\Frank Sullivan\Sold\Wowkanyon, Ron\Wowkanyon.rup Calc = MJ8 Front Door faces: N

Page 3



First floor



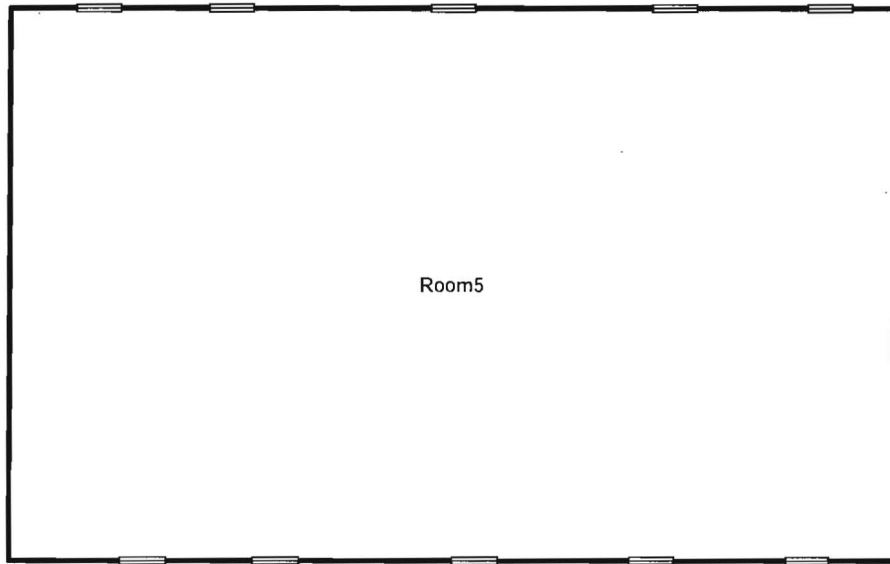
Job #:
Performed for:
Ronald Wowkany
5248 ILEX Way
Dayton, Md 21036

Supreme Air llc
6203 Collinsway rd
Baltimore, MD 21228
Phone: 410-788-1114 Fax: 410-522-1178
www.supremeairllc.com frankS@supremeairllc.co...

Scale: 1 : 100
Page 2
Right-Suite@ Universal 2013
13.0.12 RSU16744
2014-Sep-24 12:17:59
...SoldWowkany, RonWowkany...



Second floor



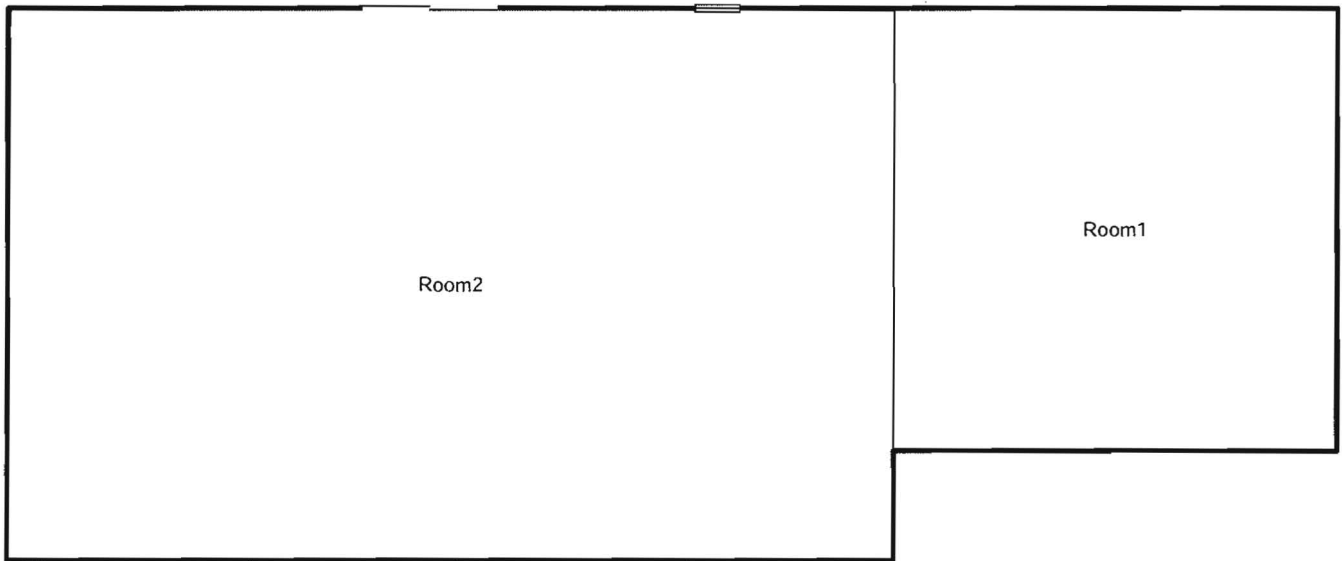
Job #:
Performed for:
Ronald Wowkanyyn
5248 ILEX Way
Dayton, Md 21036

Supreme Air llc
6203 Collinsway rd
Baltimore, MD 21228
Phone: 410-788-1114 Fax: 410-522-1178
www.supremeairllc.com frankS@supremeairllc.co...

Scale: 1 : 100
Page 1
Right-Suite® Universal 2013
13.0.12 RSU16744
2014-Sep-24 12:17:59
...!Sold!Wowkanyyn, RonWowkany...



Basement



Job #:
Performed for:
Ronald Wowkany
5248 ILEX Way
Dayton, Md 21036

Supreme Air llc
6203 Collinsway rd
Baltimore, MD 21228
Phone: 410-788-1114 Fax: 410-522-1178
www.supremeairllc.com frankS@supremeairllc.co...

Scale: 1 : 100
Page 3
Right-Suite® Universal 2013
13.0.12 RSU16744
2014-Sep-24 12:17:59
...SoldWowkany, RonWowkany...