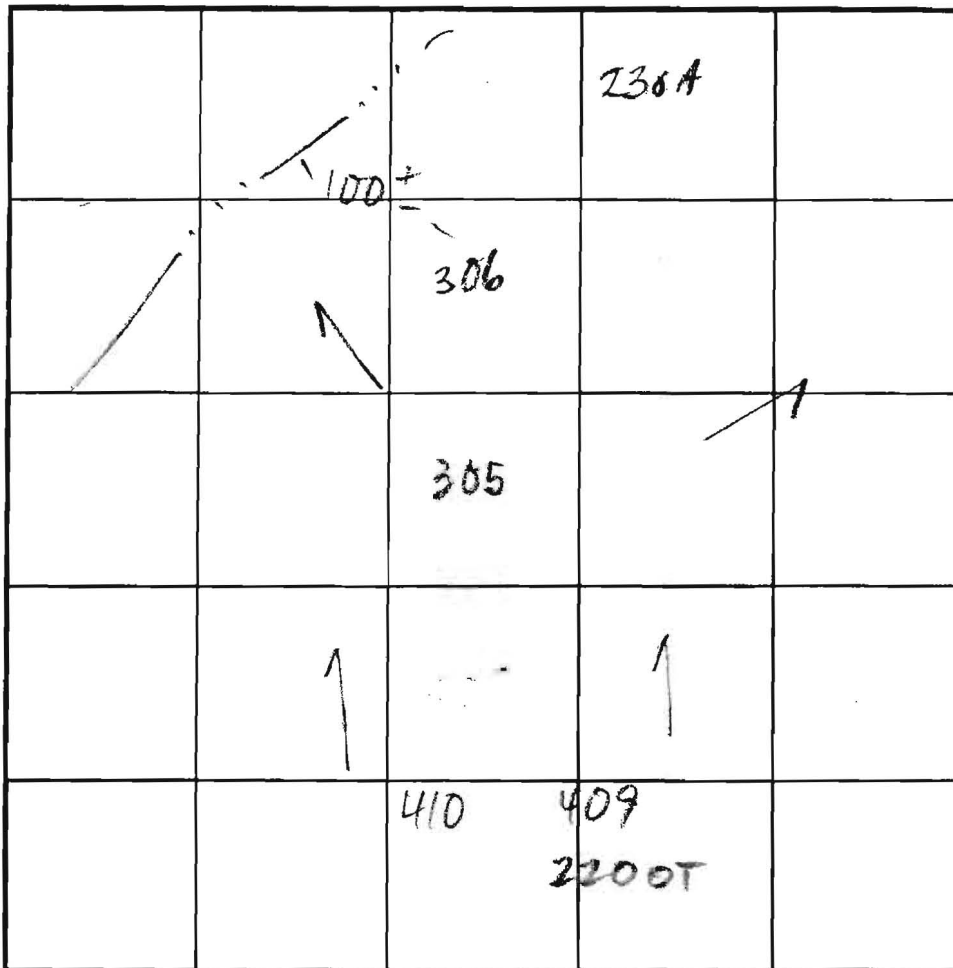


COUNTY #

SOIL PROFILE

0' 305
 orge
 brn
 hvylm
 2 tan beige
 red
 sand
 20-
 25%
 frags



SOIL PROFILE

0' 409
 orge red
 brn
 cl 1m
 2-3 hvylm
 tan
 lt. brn
 fine
 sa 1m
 10-15%
 frags

306
 lt. brn
 hvylm
 10-20%
 2 tan
 beige
 lt. brn
 sisalm
 15-20%
 frags

410
 orge red
 cl 1m
 red tan
 lt. brn
 sa 1m
 20-25%
 frags

INDICATE NORTH - NAME ADJOINING ROADWAY AS BASE LINE.

DATE	TEST NO.	DEPTH	PRE-WET		TEST - 1" DROP		TIME
			START	STOP	START	STOP	
5/15/03	305 M 7 1/2	12	1:01:30	1:03:25	1:03:25	1:06:25	3
	306 V 6 9/16	13	1:07:20	1:12	1:12	1:22	10
	230A V 6 1/2	13	1:14:00	1:18	1:18	1:27	9
	409 V 12 9/16						
	410 V 7 1/2	13	1:50:30	1:53:00	1:53	1:57	4

REMARKS _____
 TYPE OF SOIL _____
 TESTED BY _____ ALSO PRESENT _____
 TRENCH DESIGN DATA: AVERAGE PERCOLATION TIME _____ TRENCH WIDTH _____
 INLET DEPTH _____ MAXIMUM BOTTOM DEPTH _____ SQ. FT/BEDROOM _____

230A
 orge brn
 cl 1m
 w/orge
 hvylm
 30%
 R₂
 4 tan
 lt. brn
 sisalm
 10-15%
 frags
 12
 13 MOTTLES

COUNTY #

SOIL PROFILE

229

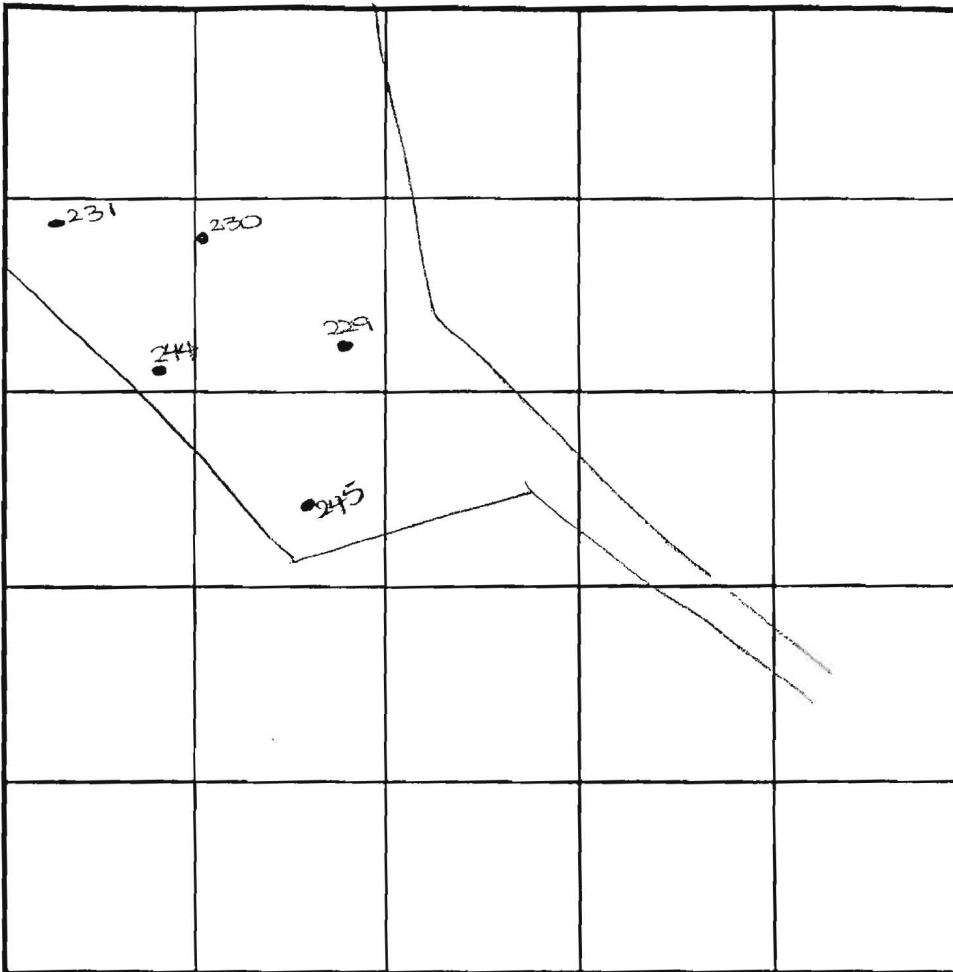
topsoil
 org brn
 cl lm
 4.5'
 H brn
 si mica
 lm
 15%
 sapr
 sh
 4'

244

topsoil
 org brn
 cl lm
 4.5'
 H brn
 si mica
 lm
 40%+
 sh
 12' Refusal

231

topsoil
 org brn
 cl lm
 3.5'
 4'
 med
 brn
 si mica
 lm
 2-3%
 sh
 11.4"
 seepage
 12.4"
 water



INDICATE NORTH - NAME ADJOINING ROADWAY AS BASE LINE.

SOIL PROFILE

230

topsoil
 org brn
 cl lm
 4.5'
 H brn
 si mica
 lm
 20%+
 sh
 4.5'

245

topsoil
 org brn
 cl lm
 4'
 4.5'
 H to med
 brn
 si mica
 lm
 4'
 13.5'
 water

DATE	TEST NO.	DEPTH	PRE-WET		TEST - 1' DROP		TIME
			START	STOP	START	STOP	
10-6-01	229	6.0' S	11:29	11:30 ₃	11:30 ₃	11:32 ₂	2
		14.0' D	Visual	-see	profile		OK
	244	4.0' S	11:34	11:40	11:40	12:02	16
		12.0' D	Refusal	-see	profile		OK
	231	4.5' S	11:52	12:00	12:00	12:10	10
		11.4" D	seepage	-see	profile		FAIL
	230	4.5' S	12:04	12:07 ₂	12:07 ₂	12:11	4
		14.5' D	Visual	-see	profile		OK
	245	4.5' S	12:15 ₃	12:17 ₃	12:17 ₃	12:20	3
		13.5' D	Water	-see	profile		FAIL

REMARKS Due to drought conditions - Additional buffer (4 feet) applied in addition to State minimum (4 feet) - therefore, need 8 feet from observed groundwater to bottom of proposed septic system.

TESTED BY DKC ALSO PRESENT fogle's crew B. Schreibley

TRENCH DESIGN DATA. AVERAGE PERCOLATION TIME _____ TRENCH WIDTH _____

INLET DEPTH _____ MAXIMUM BOTTOM DEPTH _____ SQ FT/BEDROOM _____

PARCEL 227
 N/F
 CLARK'S WOODS I
 EDGEBROOK FARM, INC.
 NON-BUILDABLE
 PRESERVATION PARCEL A
 4839/244
 PLAT NO. 13063 & 14203
 ZONED: RC-DEC

E 1,307,900
 N 579,850

LOT 13
 52,903 S.F.

LOT 14
 51,495 S.F.

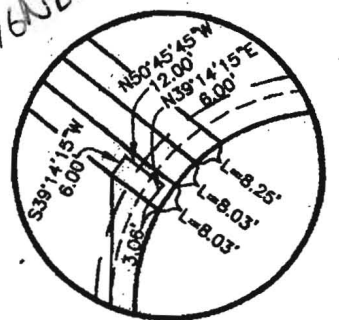
LOT 15
 50,558 S.F.

LOT 16
 46,498 S.F.

LOT 17
 44,154 S.F.

LOT 12
 36,951 S.F.

F-04118
 SIGNED 11/5/05

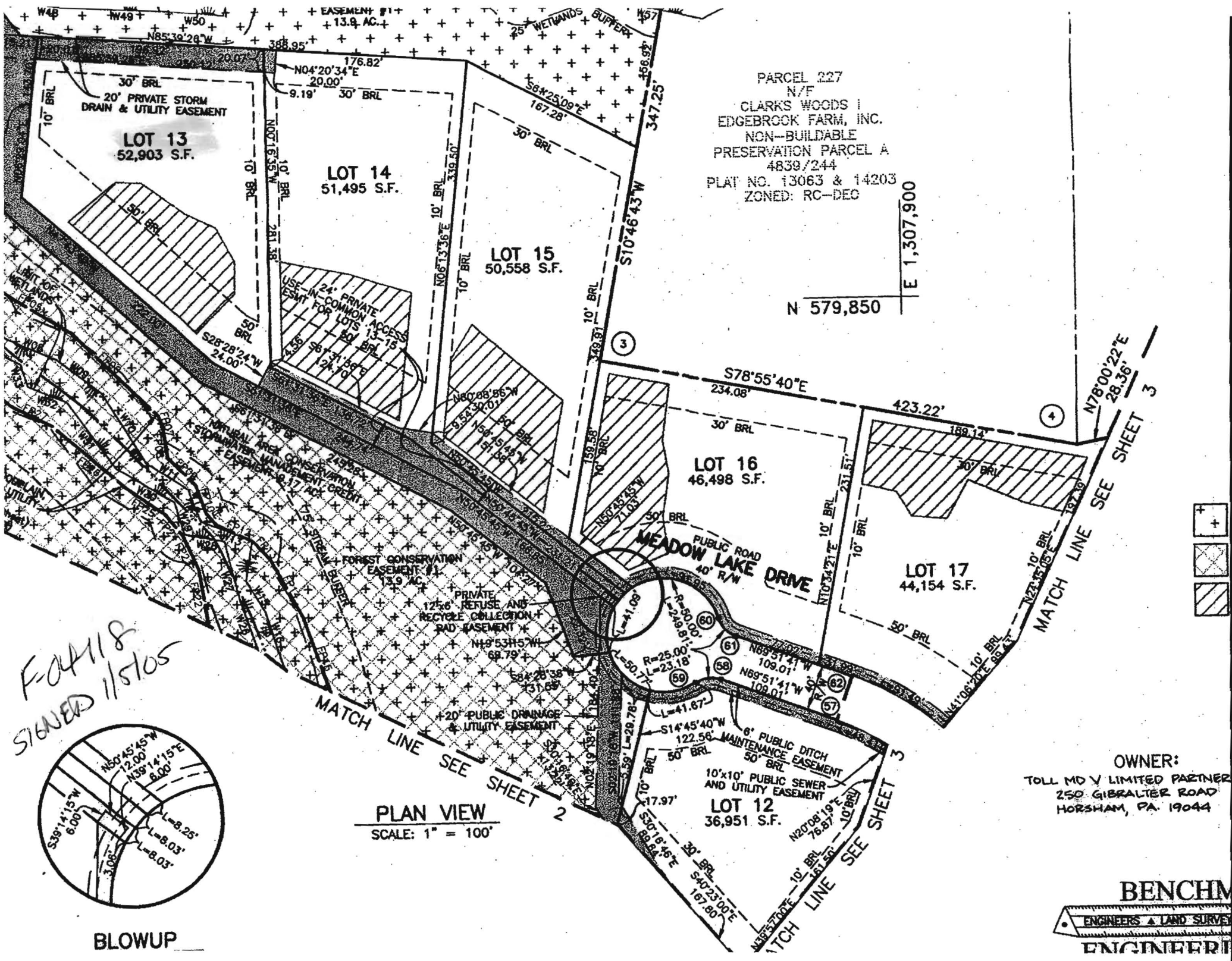


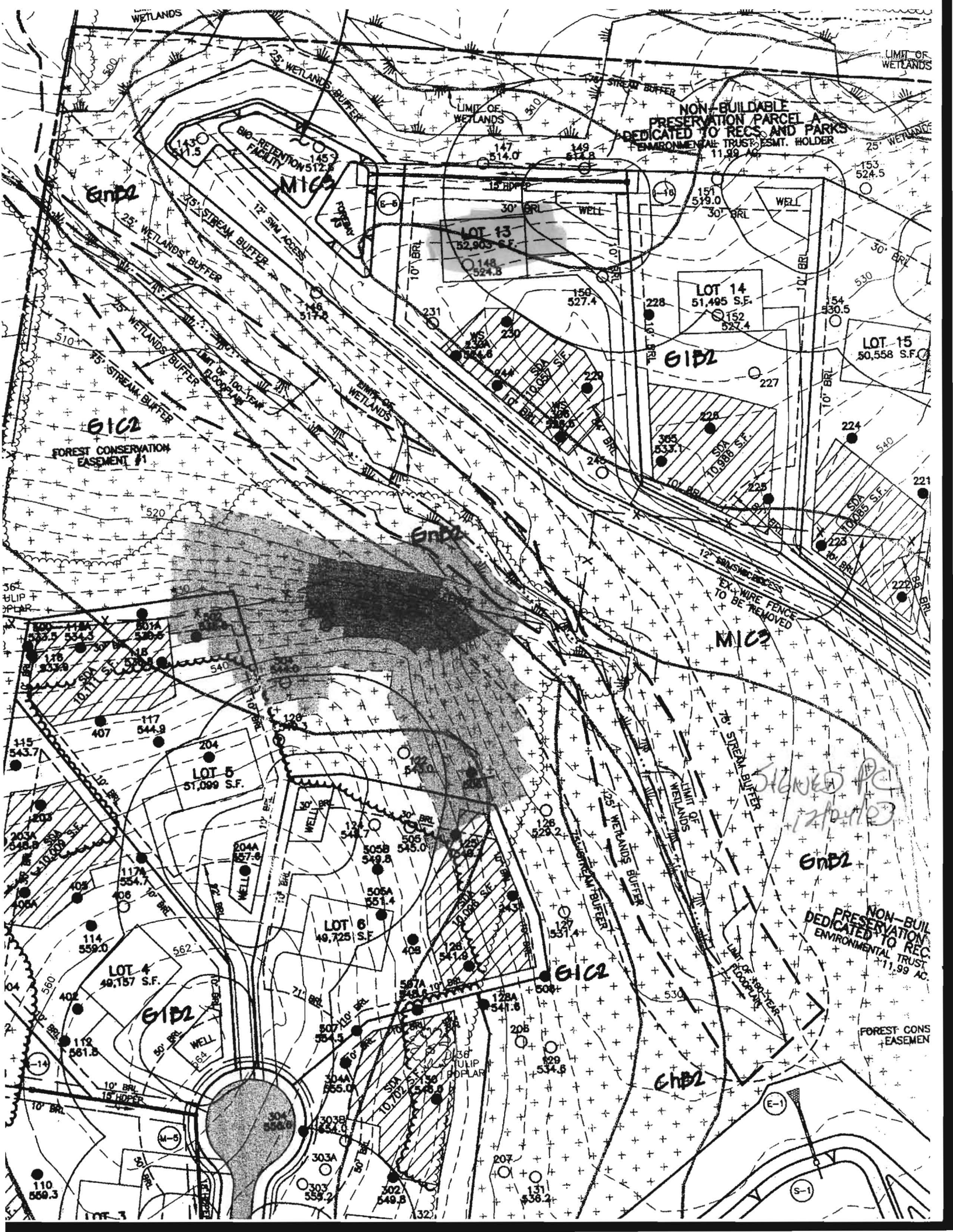
BLOWUP

PLAN VIEW
 SCALE: 1" = 100'

OWNER:
 TOLL MD V LIMITED PARTNER
 250 GIBRALTER ROAD
 HORSHAM, PA. 19044

BENCHM
 ENGINEERS & LAND SURVEY
 ENGINEERS





WETLANDS
25' WETLANDS BUFFER
80'-RETENTION FACILITY
MIG
143 511.5
145 512.3
147 514.0
149 514.8

NON-BUILDABLE PRESERVATION PARCEL A
DEDICATED TO RECS AND PARKS
ENVIRONMENTAL TRUST ESMT. HOLDER
11.99 AC.

LOT 13
52,903 S.F.
148 524.3

LOT 14
51,495 S.F.
151 519.0
152 524.4

LOT 15
50,558 S.F.

G1C2
FOREST CONSERVATION EASEMENT #1

G1B2

MIG

LOT 5
51,099 S.F.
204

LOT 6
49,725 S.F.
505A 549.8
505B 545.0
506 545.0
506A 541.8
506B 541.8
507 541.8
507A 541.8
507B 541.8
508 541.8
508A 541.8
508B 541.8
509 541.8
509A 541.8
509B 541.8
510 541.8
510A 541.8
510B 541.8
511 541.8
511A 541.8
511B 541.8
512 541.8
512A 541.8
512B 541.8
513 541.8
513A 541.8
513B 541.8
514 541.8
514A 541.8
514B 541.8
515 541.8
515A 541.8
515B 541.8
516 541.8
516A 541.8
516B 541.8
517 541.8
517A 541.8
517B 541.8
518 541.8
518A 541.8
518B 541.8
519 541.8
519A 541.8
519B 541.8
520 541.8
520A 541.8
520B 541.8
521 541.8
521A 541.8
521B 541.8
522 541.8
522A 541.8
522B 541.8
523 541.8
523A 541.8
523B 541.8
524 541.8
524A 541.8
524B 541.8
525 541.8
525A 541.8
525B 541.8
526 541.8
526A 541.8
526B 541.8
527 541.8
527A 541.8
527B 541.8
528 541.8
528A 541.8
528B 541.8
529 541.8
529A 541.8
529B 541.8
530 541.8
530A 541.8
530B 541.8
531 541.8
531A 541.8
531B 541.8
532 541.8
532A 541.8
532B 541.8
533 541.8
533A 541.8
533B 541.8
534 541.8
534A 541.8
534B 541.8
535 541.8
535A 541.8
535B 541.8
536 541.8
536A 541.8
536B 541.8
537 541.8
537A 541.8
537B 541.8
538 541.8
538A 541.8
538B 541.8
539 541.8
539A 541.8
539B 541.8
540 541.8
540A 541.8
540B 541.8
541 541.8
541A 541.8
541B 541.8
542 541.8
542A 541.8
542B 541.8
543 541.8
543A 541.8
543B 541.8
544 541.8
544A 541.8
544B 541.8
545 541.8
545A 541.8
545B 541.8
546 541.8
546A 541.8
546B 541.8
547 541.8
547A 541.8
547B 541.8
548 541.8
548A 541.8
548B 541.8
549 541.8
549A 541.8
549B 541.8
550 541.8
550A 541.8
550B 541.8
551 541.8
551A 541.8
551B 541.8
552 541.8
552A 541.8
552B 541.8
553 541.8
553A 541.8
553B 541.8
554 541.8
554A 541.8
554B 541.8
555 541.8
555A 541.8
555B 541.8
556 541.8
556A 541.8
556B 541.8
557 541.8
557A 541.8
557B 541.8
558 541.8
558A 541.8
558B 541.8
559 541.8
559A 541.8
559B 541.8
560 541.8
560A 541.8
560B 541.8
561 541.8
561A 541.8
561B 541.8
562 541.8
562A 541.8
562B 541.8
563 541.8
563A 541.8
563B 541.8
564 541.8
564A 541.8
564B 541.8
565 541.8
565A 541.8
565B 541.8
566 541.8
566A 541.8
566B 541.8
567 541.8
567A 541.8
567B 541.8
568 541.8
568A 541.8
568B 541.8
569 541.8
569A 541.8
569B 541.8
570 541.8
570A 541.8
570B 541.8
571 541.8
571A 541.8
571B 541.8
572 541.8
572A 541.8
572B 541.8
573 541.8
573A 541.8
573B 541.8
574 541.8
574A 541.8
574B 541.8
575 541.8
575A 541.8
575B 541.8
576 541.8
576A 541.8
576B 541.8
577 541.8
577A 541.8
577B 541.8
578 541.8
578A 541.8
578B 541.8
579 541.8
579A 541.8
579B 541.8
580 541.8
580A 541.8
580B 541.8
581 541.8
581A 541.8
581B 541.8
582 541.8
582A 541.8
582B 541.8
583 541.8
583A 541.8
583B 541.8
584 541.8
584A 541.8
584B 541.8
585 541.8
585A 541.8
585B 541.8
586 541.8
586A 541.8
586B 541.8
587 541.8
587A 541.8
587B 541.8
588 541.8
588A 541.8
588B 541.8
589 541.8
589A 541.8
589B 541.8
590 541.8
590A 541.8
590B 541.8
591 541.8
591A 541.8
591B 541.8
592 541.8
592A 541.8
592B 541.8
593 541.8
593A 541.8
593B 541.8
594 541.8
594A 541.8
594B 541.8
595 541.8
595A 541.8
595B 541.8
596 541.8
596A 541.8
596B 541.8
597 541.8
597A 541.8
597B 541.8
598 541.8
598A 541.8
598B 541.8
599 541.8
599A 541.8
599B 541.8
600 541.8
600A 541.8
600B 541.8

LOT 4
49,157 S.F.
114 559.0
112 561.8
110 569.3

NON-BUILDABLE PRESERVATION PARCEL A
DEDICATED TO RECS AND PARKS
ENVIRONMENTAL TRUST ESMT. HOLDER
11.99 AC.

FOREST CONSERVATION EASEMENT

Handwritten signature and initials

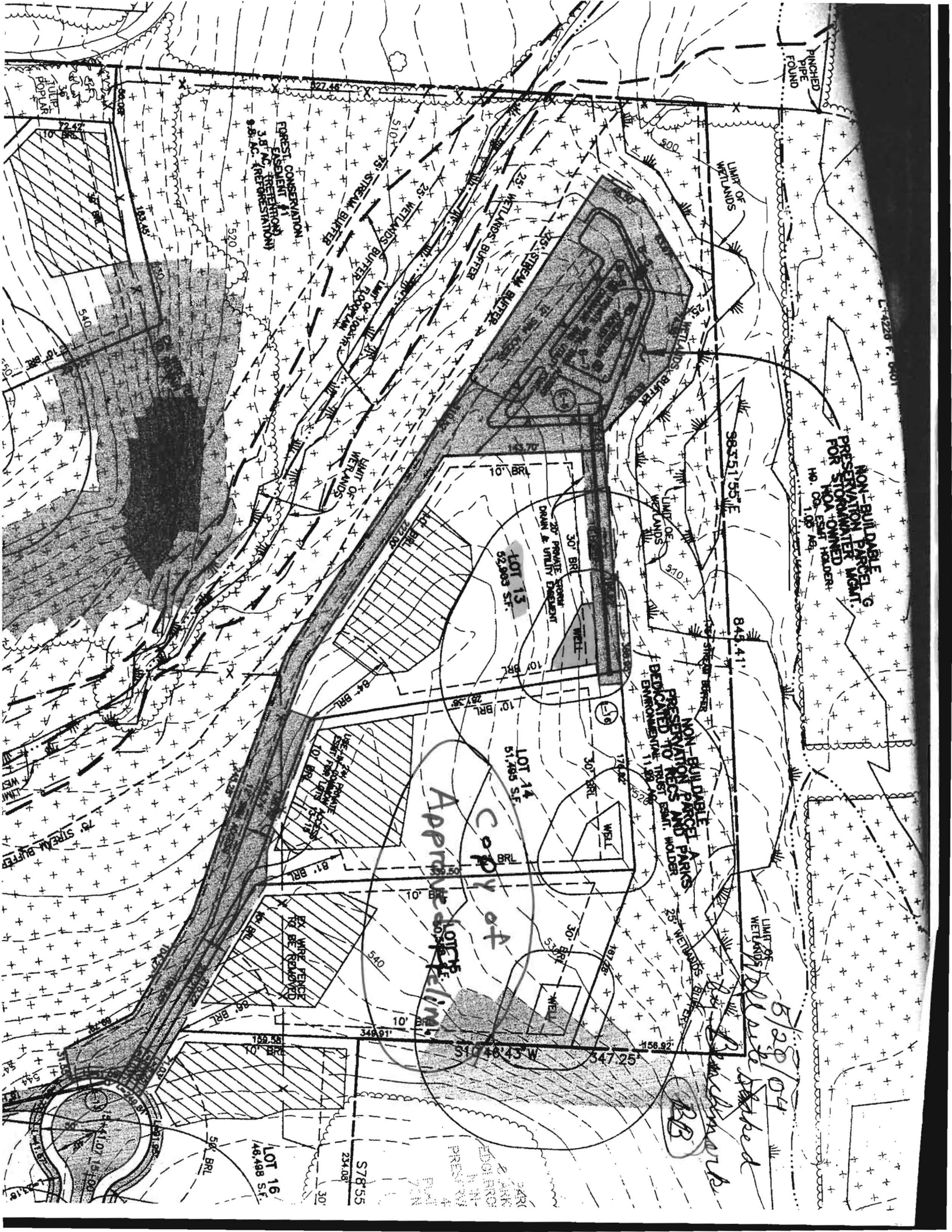
G1B2

G1C2

G1B2

E-1

S-1



NON-BUILDABLE PRESERVATION PARCEL G
 PRESERVATION TRAIL WASH.
 FOR STORMWATER FOR HOA OWNED HOA OWNED HOA OWNED
 HO. ON 1.05 Acs.

NON-BUILDABLE PRESERVATION PARCEL A
 PRESERVATION TRAIL WASH.
 DEDICATED TO RECS AND PARKS ENVIRONMENT 11.99 Acs.

APPROXIMATE COPY OF LOT 15

5/20/04
 [Handwritten signature]

BB

LOT 16
 48,498 SF

578,55

240
 200
 100
 700
 700

