

# APPLICATION

PERCOLATION TESTING

A \_\_\_\_\_

P \_\_\_\_\_

HOWARD COUNTY HEALTH DEPARTMENT  
BUREAU OF ENVIRONMENTAL HEALTH  
P.O. BOX 476 ELLICOTT CITY, MARYLAND 21043  
TELEPHONE 461-9933

DISTRICT \_\_\_\_\_

DATE \_\_\_\_\_

TO: THE COUNTY HEALTH OFFICER  
ELLICOTT CITY, MARYLAND

I, HEREBY, APPLY FOR THE NECESSARY TEST IN ORDER TO CONSTRUCT (OR RECONSTRUCT) A SEWAGE DISPOSAL SYSTEM.

PROPERTY OWNER Lambert Cissel

ADDRESS 3425 Hipsley Mill Road, Woodbine, MD 21797 PHONE (410) 442-5671

PROSPECTIVE BUYER Developer, Land Marketing Consultants, Inc., Timothy W. Feaga

ADDRESS 3243 Bethany Lane, Ellicott City, MD 21042 PHONE (410) 313-8808

PROPERTY LOCATION:

SUBDIVISION Cissel Property LOT NO. \_\_\_\_\_

ROAD AND DESCRIPTION Intersection of Hardy & St. Michael's Road

TAX MAP 7 PARCEL # 394, 4, 341, 144

SIZE OF LOT 1 Acre TYPE BLDG \_\_\_\_\_  
(SINGLE FAMILY DWELLING OR COMMERCIAL)

THE SYSTEM INSTALLED UNDER THIS APPLICATION IS ACCEPTABLE ONLY UNTIL PUBLIC FACILITIES BECOME AVAILABLE. I FULLY UNDERSTAND THE

FEE CONNECTED WITH THE FILING OF THIS PERC TEST APPLICATION IS NON-REFUNDABLE UNDER ANY CIRCUMSTANCES. I ALSO AGREE TO COMPLY

WITH ALL M.O.S.H.A. REQUIREMENTS IN TESTING THIS LOT.

Willis Lambert Cissel JR  
(SIGNATURE OF APPLICANT)

APPROVED BY \_\_\_\_\_ FOR \_\_\_\_\_ DATE \_\_\_\_\_

REJECTED BY \_\_\_\_\_ FOR \_\_\_\_\_ DATE \_\_\_\_\_

HOLD PENDING FURTHER TESTS \_\_\_\_\_ DATE \_\_\_\_\_

REASONS FOR REJECTION OR HOLDING \_\_\_\_\_

HD-216

# THIS IS NOT A PERMIT

Lot #28

COUNTY #

SOIL PROFILE

5  
 0' top soil  
 6" beige SiLm  
 3.0 red brn SiLm  
 6.0 pink to red SiLm  
 10% shale

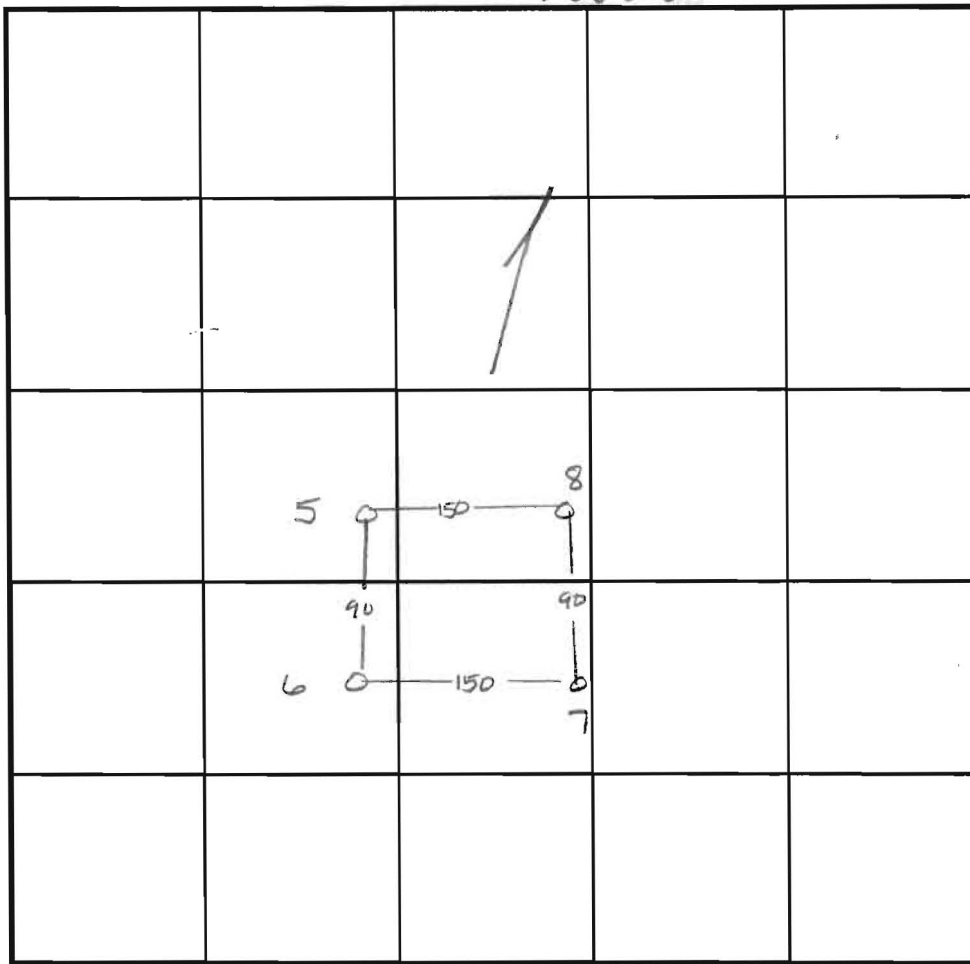
6  
 2.0 pink to red SiLm  
 lgt yel SiLm  
 15% shale

12.0  
 horiz. multi color decayed shale  
 20% Rx at bottom

7, 8  
 2.0 yellow SiLm  
 6.0 red brn SiLm  
 bright pink SiLm  
 10% Rx  
 looks like Rx but breaks into SiLm

SOIL PROFILE

0'



INDICATE NORTH - NAME ADJOINING ROADWAY AS BASE LINE.

Hardy Road

DATE	TEST NO.	DEPTH	PRE-WET		TEST - 1" DROP		TIME	
			START	STOP	START	STOP		
10.21.97	5	3.0 V12.0	10:29	10:41	>30 min	—	slow	
		4.0 V12.0	10:40	10:40 <sup>30</sup>	10:40 <sup>30</sup>	10:43 <sup>30</sup>	3 min	
	6	3.5 V12.0	10:47	10:48	10:48	10:54	6 min	
	7	Visual to 11.0	- see profile		—		OK	
	8	3.5 V12.0	10:56	10:58	10:58	11:02	4 min	

REMARKS \_\_\_\_\_

TYPE OF SOIL \_\_\_\_\_

TESTED BY Amy McMillen ALSO PRESENT Tim Feaga

TRENCH DESIGN DATA: AVERAGE PERCOLATION TIME 4 min TRENCH WIDTH 3.0

INLET DEPTH 3.0 MAXIMUM BOTTOM DEPTH 5.0 SQ. FT./BEDROOM 180

Lot 27

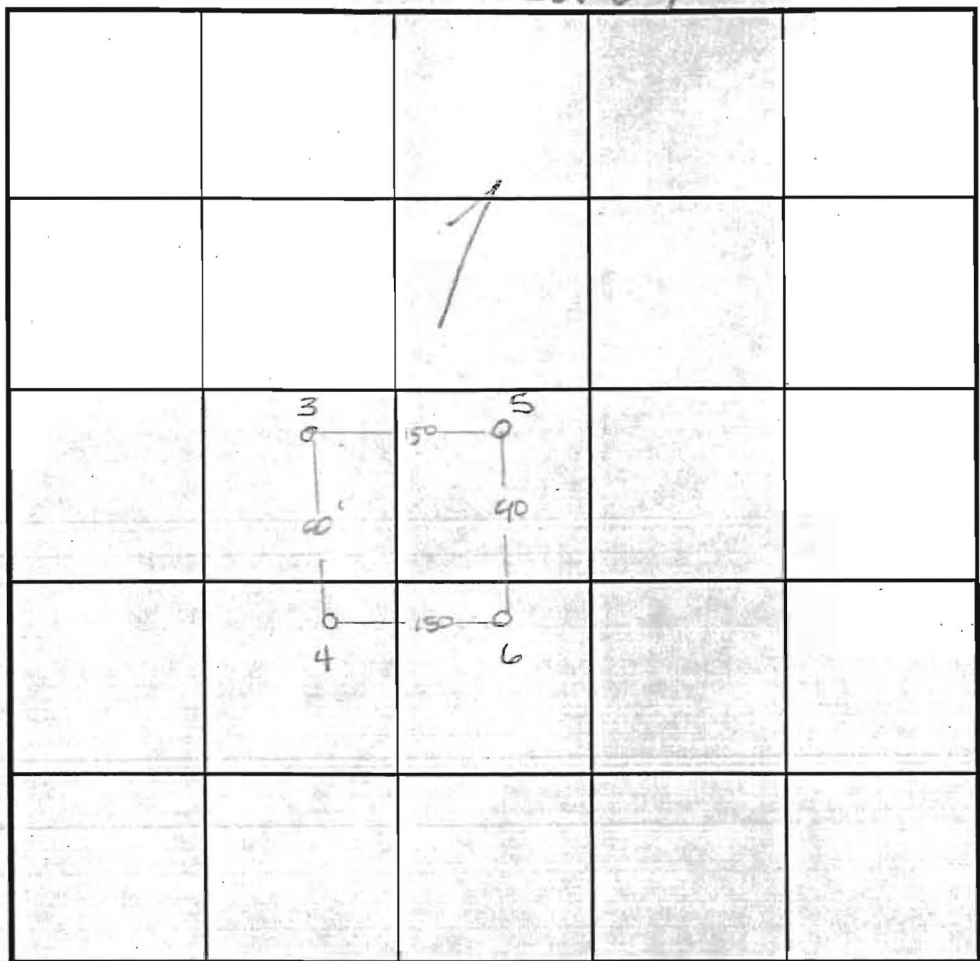
COUNTY #

SOIL PROFILE

0' 3.5  
 6" topsoil  
 beige siltm  
 3.0 red brn siltm  
 2.0 pink to red siltm 10% shale

4  
 orange red brn siltm  
 3.0 red brn siltm  
 5.0 lgt yellow brn to white siltm 15% shale

6  
 pink to red siltm  
 2.0 lgt yel siltm 15% shale horizontal multi-color decayed shale  
 2.0 20% Rx at bottom



SOIL PROFILE



INDICATE NORTH - NAME ADJOINING ROADWAY AS BASE LINE.

Hardy Road

DATE	TEST NO.	DEPTH	PRE-WET		TEST - 1" DROP		TIME
			START	STOP	START	STOP	
10-21-97	3	Visual	to 12.0	See profile			OK
	4	3.0 V12.0	10.21	10.22	10.22	10.23 <sup>30</sup>	1 1/2 min
	5	3.0 V12.0	10.29	10.41	—	—	Slow
		4.0 V12.0	10.40	10.40 <sup>30</sup>	10.40 <sup>30</sup>	10.43 <sup>30</sup>	3 min
	6	3.5 V12.0	10.47	10.48	10.48	10.54	6 min

REMARKS \_\_\_\_\_  
 TYPE OF SOIL \_\_\_\_\_  
 TESTED BY Amy McMillen ALSO PRESENT Tim Feaga  
 TRENCH DESIGN DATA: AVERAGE PERCOLATION TIME 2 min TRENCH WIDTH 2.0  
 INLET DEPTH 3.0 MAXIMUM BOTTOM DEPTH 7.0 SQ. FT./BEDROOM 1808

LAND DEDICATED FOR COUNTY

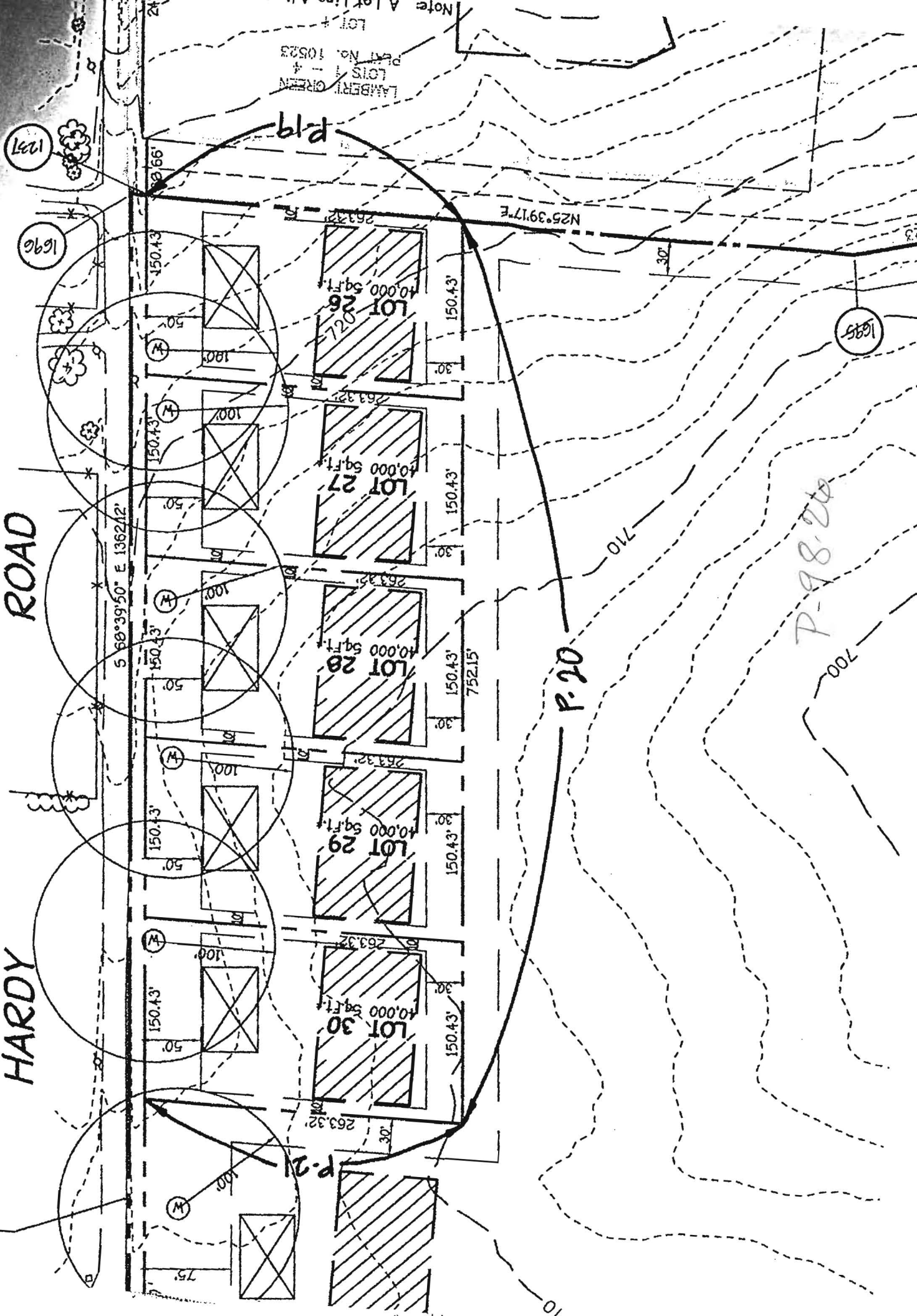
HARDY ROAD

ROAD

1697

1696

1695



LAMBERT GREEN  
LOTS 1-4  
PLOT No. 10523  
Note A Lot 1341

568.39' 50" E 1362.12'

N25°39'17"E

LOT 26  
10,000 sq.ft.

LOT 27  
10,000 sq.ft.

LOT 28  
10,000 sq.ft.

LOT 29  
10,000 sq.ft.

LOT 30  
10,000 sq.ft.

P-20

P-21

P-98.20

24

150.43

150.43

150.43

150.43

150.43

150.43

150.43

150.43

150.43

150.43

150.43

150.43

150.43

150.43

150.43

150.43

150.43

150.43

150.43

150.43

263.32

263.32

263.32

263.32

263.32

263.32

263.32

263.32

263.32

263.32

263.32

263.32

263.32

263.32

263.32

263.32

263.32

263.32

263.32

263.32

263.32

263.32

263.32

263.32

263.32

263.32

263.32

263.32

263.32

263.32

263.32

263.32

263.32

263.32

263.32

263.32

263.32

263.32

263.32

263.32

263.32

263.32

263.32

263.32

263.32

263.32

263.32

263.32

263.32

263.32

263.32

263.32

263.32

263.32

263.32

263.32

263.32

263.32

263.32

263.32

263.32

263.32

263.32

263.32

263.32

263.32

263.32

263.32

263.32

263.32

263.32

263.32

263.32

263.32

263.32

263.32

263.32

263.32

263.32

263.32

263.32

263.32

263.32

263.32

263.32

263.32

263.32

263.32

263.32

263.32

263.32

263.32

263.32

263.32

263.32

263.32

263.32

263.32

263.32

263.32

263.32

263.32

263.32

263.32

263.32

263.32

263.32

263.32

263.32

263.32

263.32

263.32

263.32

263.32

263.32

263.32

263.32

263.32

263.32

263.32

263.32

263.32

263.32

263.32

263.32

263.32

263.32

263.32

263.32

263.32

263.32

263.32

263.32

263.32

263.32

263.32

263.32

263.32

263.32

263.32

263.32

263.32

263.32

263.32

263.32

263.32

263.32

263.32

263.32

263.32

263.32

263.32

263.32

263.32

263.32

263.32

263.32

263.32

263.32

263.32

263.32

263.32

263.32

263.32

263.32

263.32

263.32

263.32

263.32

263.32

263.32

263.32

263.32

263.32

263.32

263.32

263.32

263.32

263.32

263.32

263.32

263.32

263.32

263.32

263.32

263.32

263.32

263.32

263.32

263.32

263.32

263.32

263.32

263.32

263.32

263.32

263.32

263.32

263.32

263.32

263.32

263.32

263.32

263.32

263.32

263.32

263.32

263.32

263.32

263.32

263.32

263.32

263.32

263.32

263.32

263.32

263.32

263.32

263.32

263.32

263.32

263.32

263.32

263.32

263.32

263.32

263.32

263.32

263.32

263.32

263.32

263.32

263.32

263.32

263.32

263.32

263.32

263.32

263.32

263.32

263.32

263.32

263.32

263.32

263.32

263.32

263.32

263.32

263.32

263.32

263.32

263.32

263.32

263.32

263.32

263.32

263.32

263.32

263.32

263.32

263.32

HARDY

ROAD

