

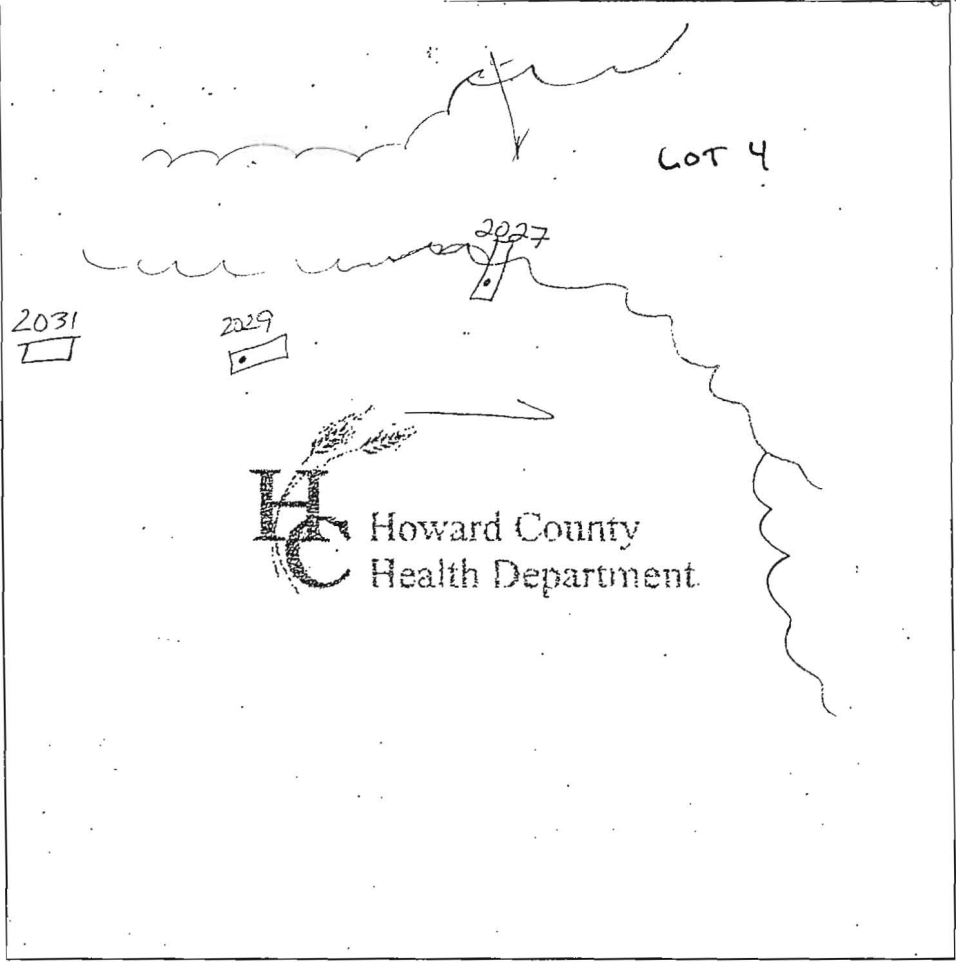
2031 / 2028 / 2030

APR 2027  
 org brn  
 micac  
 hyl  
 5 1/2'  
 Brn  
 v. micac  
 loam  
 ↓  
 Lt brn  
 v. micac  
 damp/moist  
 sand  
 Bottom  
 8'  
 14'

2029  
 Brn SL  
 w.c. s.g.  
 ↓  
 White  
 Lt brn  
 med gr  
 sand  
 w/ s.s. approx 10%  
 Bottom  
 8'  
 14'

2031  
 w/rd brn  
 SL  
 ↓  
 4'

Hdg brn  
 Brn  
 SAND  
 Trace  
 Rx  
 Bottom  
 14'



w/rd brn  
 brn  
 SL  
 Trace  
 Rx  
 5 1/2'  
 Lt Brn  
 med  
 gr SAND  
 12'  
 Bottom

2032  
 Rd brn  
 gritty  
 CL  
 5 1/2'  
 White  
 decomposed  
 Rx - coarse  
 SAND  
 on west  
 wall  
 12'  
 Bottom

2034  
 Str org brn  
 loam  
 micac 15-20%  
 4'  
 Lt brn  
 f. med  
 gr  
 SAND  
 13'  
 Bottom  
 w/ky  
 balls  
 alt % >  
 almost  
 clean  
 s.s. approx 10%

DATE	TEST #	DEPTH	START	BREAK 1" DROP	STOP 2" DROP	TIME OF 2nd INCH	P/F/H
4/24/06	2027	7'	12:51	12:56	1:03	7	P
LOT 6	2029	4 1/2' M	12:45	12:46	12:46	re pour	
			12:46 <sup>30</sup>	12:47 <sup>+</sup>	12:48 <sup>+</sup>	1"	Failed
		9' SOIL ATTL				too fast	
LOT 6	2028	5 1/2'	12:56	12:57	1:00	3	P
LOT 7	2030	5'	1:01	1:03	1:06	3	P
LOT 7	2031	Visual	-SEE	2028 & 2030			
LOT 7	2032	5 1/2'	1:04	1:09	1:16	5	P
proposed LOT 7	2034	4 1/2'	1:12	1:14	1:17	3	P

REMARKS \_\_\_\_\_

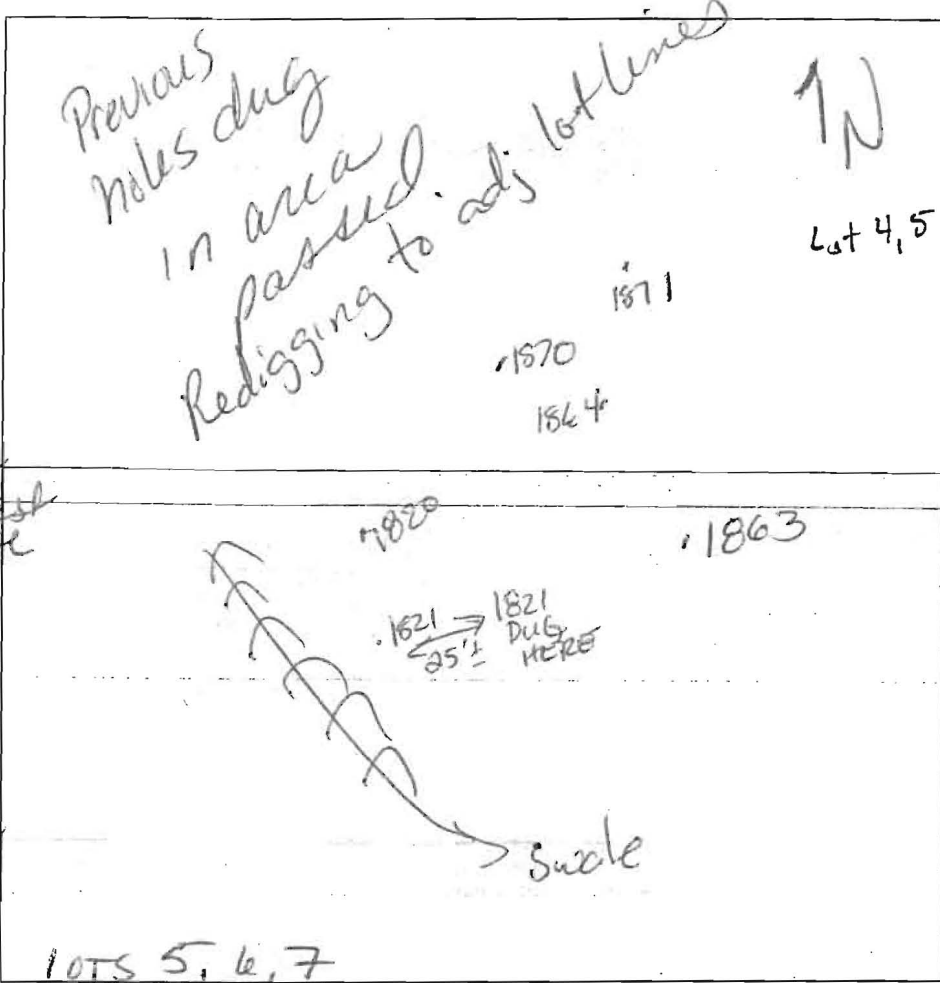
SANITARIAN Kane BACKHOE Hotfields OTHERS \_\_\_\_\_

TEST HOLES USED IN SDA \_\_\_\_\_ AVG. PERC TIME \_\_\_\_\_ SQ.-FT/BR \_\_\_\_\_

TRENCH WIDTH \_\_\_\_\_ INLET DEPTH \_\_\_\_\_ MAX. BOT DEPTH \_\_\_\_\_ EFFECTIVE SW \_\_\_\_\_

A/P 525118

1871  
Lty brn  
1 Hbrn  
gr. tly  
SCL  
N  
ES 1/2  
gritty  
damp  
LS  
cobbles ~  
35%  
compact  
Soil



per hole on west back  
Bottom 14' 1/2

1870  
wk rd brn  
gr. tly L

TRACE  
Rc  
lt. brn  
LS /  
Sand  
v.f. s.o./gr

Bottom 15'

1864/1863

WK red  
L/S

brn  
4 brn  
1 Hbrn  
v.f. med  
gr. SAND  
compact

packet of  
faint  
mottles  
on S. wall  
Bottom 13'

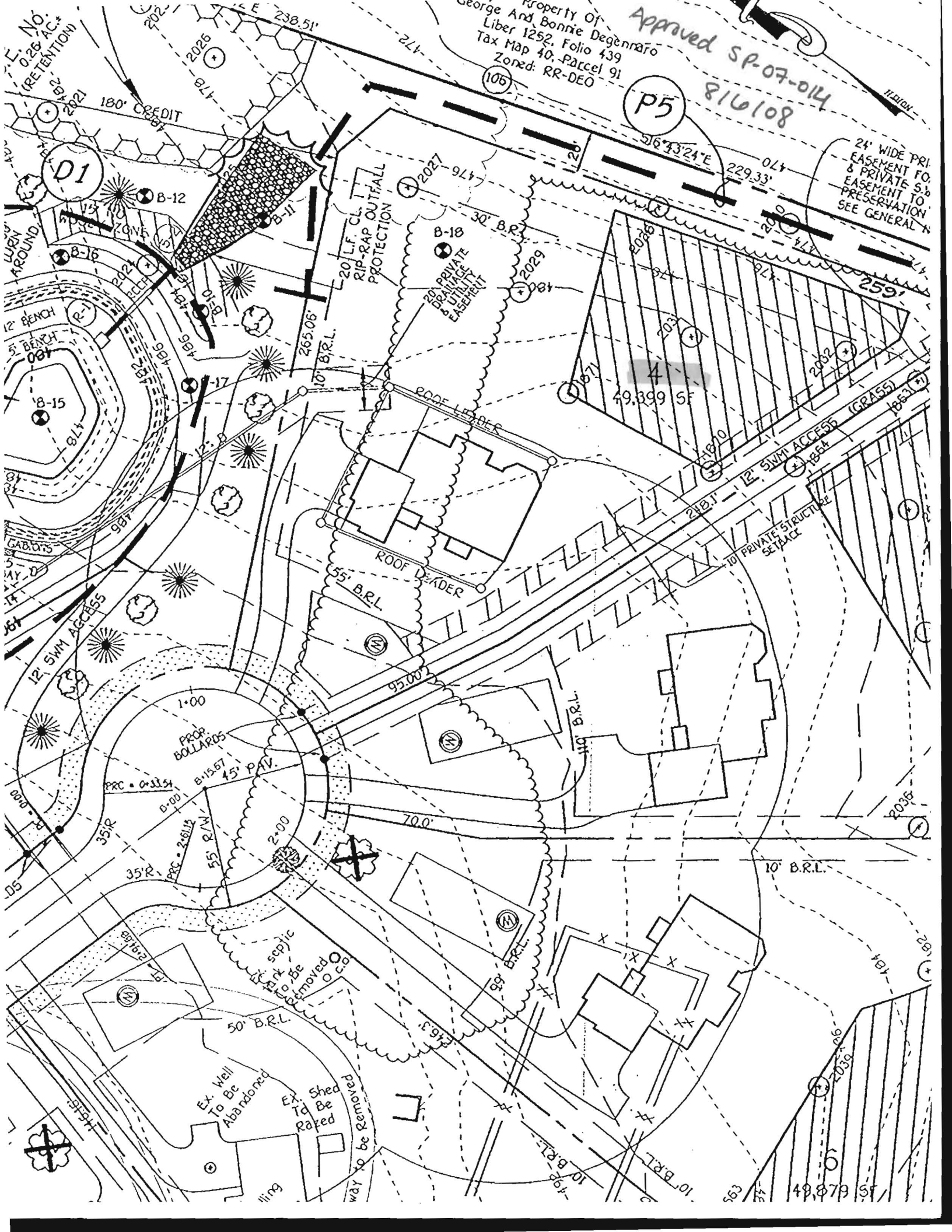
DATE	TEST #	DEPTH	START	BREAK 1" DROP	STOP 2" DROP	TIME OF 2nd INCH	P/F/H
6/27/06	1871	6' in cobbles	10:50	10:52	10:57	5	P/H/P
		STAY 10' OFF HIGH SIDE OF HOLE					
	1870	Visual				EST 4	P
	1864	<del>Visual</del>	11:20	11:22	11:25	3'	P
	1863	See 1864 w/ mottled faint @ 10' invert @ 2 1/2, 4 1/2 bottom					
	Hole 1820	moved up hill 30' SEE holes 1864, 1863. 3m+					
	Hole 1820	mottled faint @ 12'					

REMARKS Swale between LOTS 6 & 7 need to be adjusted field run topo

SANITARIAN Krew BACKHOE Pat Fields OTHERS J. Greenfield

TEST HOLES USED IN SDA \_\_\_\_\_ AVG. PERC TIME \_\_\_\_\_ SQ. FT/BR \_\_\_\_\_

TRENCH WIDTH \_\_\_\_\_ INLET DEPTH \_\_\_\_\_ MAX. BOT DEPTH \_\_\_\_\_ EFFECTIVE SW \_\_\_\_\_



Property of  
George And Bonnie Degennaro  
Liber 1252, Folio 439  
Tax Map 40, Parcel 91  
Zoned: RR-DEO

Approved SP-07-014  
816108

P5

24' WIDE PRI-  
EASEMENT FOR  
& PRIVATE S.W.  
EASEMENT TO  
PRESERVATION  
SEE GENERAL

D1

B-12

20' LIF. CL. I  
RIP-RAP OUTFALL  
PROTECTION

B-18

20' PRIVATE  
DRAINAGE  
& UTILITY  
EASEMENT



12' BENCH  
5' BENCH

B-15

12' SWIM ACCESS

12' SWIM ACCESS

12' SWIM ACCESS

12' SWIM ACCESS

12' SWIM ACCESS

12' SWIM ACCESS

12' SWIM ACCESS

12' SWIM ACCESS

12' SWIM ACCESS

12' SWIM ACCESS

12' SWIM ACCESS

12' SWIM ACCESS

12' SWIM ACCESS

12' SWIM ACCESS

12' SWIM ACCESS

12' SWIM ACCESS

12' SWIM ACCESS

12' SWIM ACCESS

12' SWIM ACCESS

12' SWIM ACCESS

12' SWIM ACCESS

12' SWIM ACCESS

12' SWIM ACCESS

PROP.  
BOLLARDS

45' PAV.

55' R/W

55' R/W

55' R/W

55' R/W

55' R/W

55' R/W

55' R/W

55' R/W

55' R/W

55' R/W

55' R/W

55' R/W

septic  
to be  
removed

Ex. Well  
To Be  
Abandoned

Ex. Shed  
To Be  
Raped

Ex. Shed  
To Be  
Raped

Ex. Shed  
To Be  
Raped

Ex. Shed  
To Be  
Raped

Ex. Shed  
To Be  
Raped

Ex. Shed  
To Be  
Raped

55' B.R.L.

55' B.R.L.

55' B.R.L.

55' B.R.L.

55' B.R.L.

ROOF LEADER

ROOF LEADER

ROOF LEADER

ROOF LEADER

ROOF LEADER

ROOF LEADER

ROOF LEADER

ROOF LEADER

ROOF LEADER

ROOF LEADER

ROOF LEADER

ROOF LEADER

ROOF LEADER

ROOF LEADER

ROOF LEADER

ROOF LEADER

ROOF LEADER

ROOF LEADER

ROOF LEADER

110' B.R.L.

110' B.R.L.

110' B.R.L.

110' B.R.L.

110' B.R.L.

110' B.R.L.

110' B.R.L.

110' B.R.L.

110' B.R.L.

110' B.R.L.

110' B.R.L.

110' B.R.L.

110' B.R.L.

110' B.R.L.

110' B.R.L.

49,399 SF

49,399 SF

49,399 SF

49,399 SF

49,399 SF

49,399 SF

49,399 SF

49,399 SF

49,399 SF

49,399 SF

49,399 SF

49,399 SF

49,399 SF

49,399 SF

49,399 SF

49,399 SF

49,399 SF

49,399 SF

49,399 SF

49,399 SF

49,399 SF

49,399 SF

49,399 SF

49,399 SF

242.1'

242.1'

242.1'

242.1'

242.1'

242.1'

242.1'

242.1'

242.1'

242.1'

242.1'

242.1'

242.1'

242.1'

242.1'

242.1'

242.1'

242.1'

242.1'

242.1'

242.1'

242.1'

242.1'

242.1'

12' SWIM ACCESS (GRASS)

12' SWIM ACCESS (GRASS)

12' SWIM ACCESS (GRASS)

12' SWIM ACCESS (GRASS)

12' SWIM ACCESS (GRASS)

12' SWIM ACCESS (GRASS)

12' SWIM ACCESS (GRASS)

12' SWIM ACCESS (GRASS)

12' SWIM ACCESS (GRASS)

12' SWIM ACCESS (GRASS)

12' SWIM ACCESS (GRASS)

12' SWIM ACCESS (GRASS)

12' SWIM ACCESS (GRASS)

12' SWIM ACCESS (GRASS)

12' SWIM ACCESS (GRASS)

12' SWIM ACCESS (GRASS)

12' SWIM ACCESS (GRASS)

12' SWIM ACCESS (GRASS)

12' SWIM ACCESS (GRASS)

12' SWIM ACCESS (GRASS)

12' SWIM ACCESS (GRASS)

12' SWIM ACCESS (GRASS)

12' SWIM ACCESS (GRASS)

12' SWIM ACCESS (GRASS)

10' PRIVATE STRUCTURE SETBACK

10' PRIVATE STRUCTURE SETBACK

10' PRIVATE STRUCTURE SETBACK

10' PRIVATE STRUCTURE SETBACK

10' PRIVATE STRUCTURE SETBACK

10' PRIVATE STRUCTURE SETBACK

10' PRIVATE STRUCTURE SETBACK

10' PRIVATE STRUCTURE SETBACK

10' PRIVATE STRUCTURE SETBACK

10' PRIVATE STRUCTURE SETBACK

10' PRIVATE STRUCTURE SETBACK

10' PRIVATE STRUCTURE SETBACK

10' PRIVATE STRUCTURE SETBACK

10' PRIVATE STRUCTURE SETBACK

10' PRIVATE STRUCTURE SETBACK

10' PRIVATE STRUCTURE SETBACK

10' PRIVATE STRUCTURE SETBACK

10' PRIVATE STRUCTURE SETBACK

10' PRIVATE STRUCTURE SETBACK

10' PRIVATE STRUCTURE SETBACK

10' PRIVATE STRUCTURE SETBACK

10' PRIVATE STRUCTURE SETBACK

10' PRIVATE STRUCTURE SETBACK

10' PRIVATE STRUCTURE SETBACK

49,879 SF

49,879 SF