

LAYOUT _____ INSP 4 _____
 INSP 2 _____ INSP 5 _____
 INSP 3 _____ INSP 6 _____

ISSUE DATE: 7/26/2006

APPROVAL DATE: 8/23/06

PERMIT

INDEXED

TAX ID #05-437121

P 525181

A 513618-15
~~518518-15~~

**ON-SITE SEWAGE DISPOSAL SYSTEM
 HOWARD COUNTY HEALTH DEPARTMENT
 BUREAU OF ENVIRONMENTAL HEALTH**

Hatfields Equipment IS PERMITTED TO INSTALL ALTER

ADDRESS: PO Box 519, Annapolis Junction PHONE NUMBER: 301-854-6172

SUBDIVISION: Buckskin Ridge LOT NUMBER: 5

ADDRESS: 4341 Buckskin Wood Drive PROPERTY OWNER: Columbia Builders, Inc.

SEPTIC TANK CAPACITY (GALLONS): 1250 OUTLET BAFFLE FILTER REQUIRED

PUMP CHAMBER CAPACITY (GALLONS): n/a COMPARTMENTED TANK REQUIRED

NUMBER OF BEDROOMS: 4

*Inlet 5'
Bottom 6'*

SQUARE FEET PER BEDROOM: 180

LINEAR FEET OF TRENCH REQUIRED: 200' HOUSE SERVED BY PUBLIC WATER

TRENCHES:	Trench to be 3.0 feet wide. Inlet 4.0 feet below original grade. Bottom maximum depth 6.0 feet below original grade. Effective area begins at 4.0 feet below original grade. 2.0 feet of stone below distribution pipe.
LOCATION:	Install the septic system as shown on the approved building permit plan.
NOTES:	Basement service by gravity.

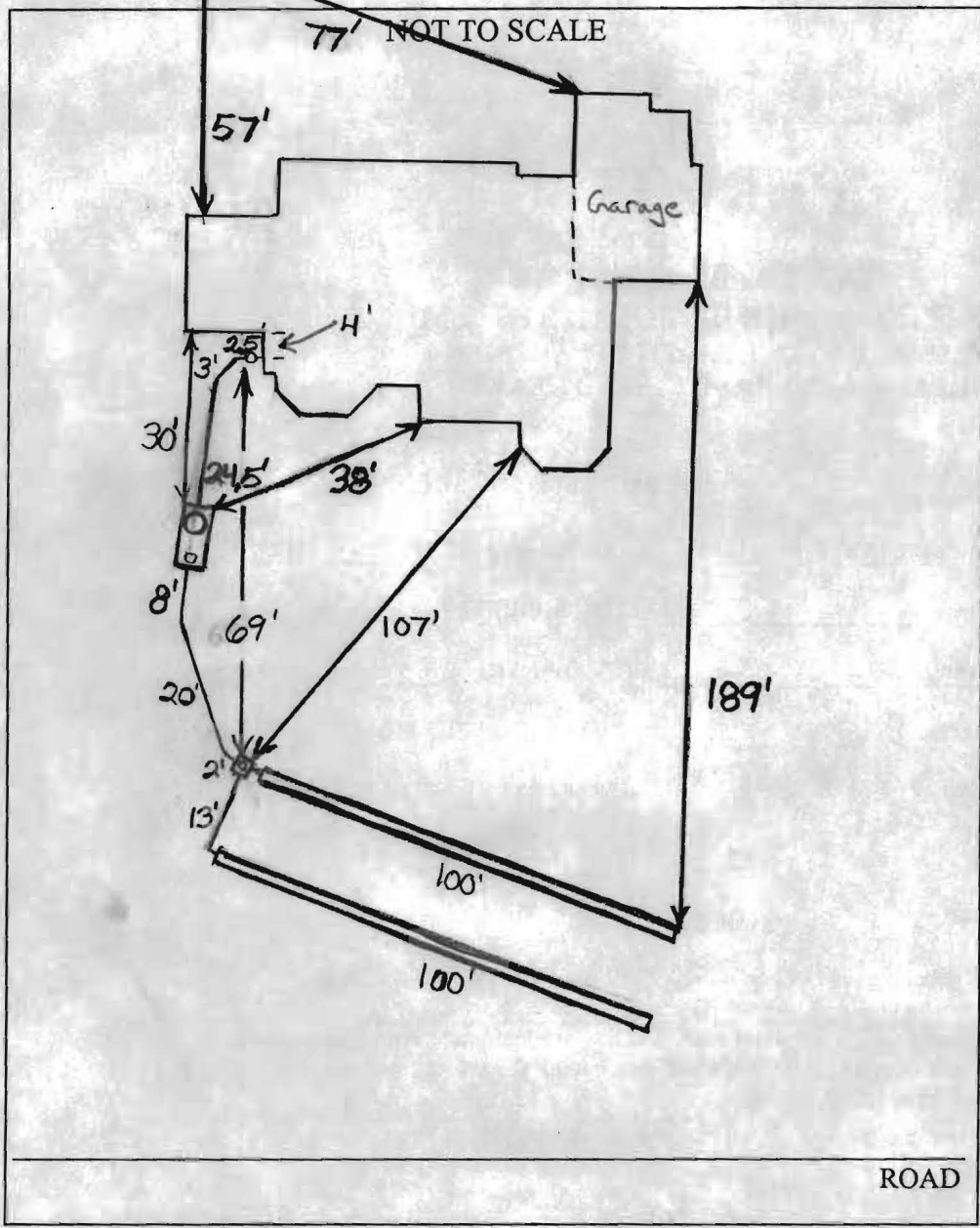
PLANS APPROVED: Sara Fegel Reviewed by: _____ DATE: 6/8/06

NOTES: PERMIT VOID AFTER 2 YEARS
 CONTRACTOR IS RESPONSIBLE FOR SCHEDULING A PRE-CONSTRUCTION INSPECTION FOR ALL INSTALLATIONS
 WATERTIGHT SEPTIC TANKS REQUIRED
 ALL PARTS OF SEPTIC SYSTEM SHALL BE 100 FEET FROM ANY WATER WELL UNLESS SPECIFICALLY AUTHORIZED
 MANHOLE RISERS REQUIRED ON ALL SEPTIC TANKS AND PUMP CHAMBERS UNLESS SPECIFICALLY AUTHORIZED
 CONTRACTOR RESPONSIBLE FOR COMPLIANCE WITH APPLICABLE REGULATIONS, GUIDELINES AND THE TERMS OF THIS PERMIT

**NEITHER THE HOWARD COUNTY COUNCIL NOR THE HEALTH DEPARTMENT IS
 RESPONSIBLE FOR THE SUCCESSFUL OPERATION OF ANY SYSTEM
 PERMITTEE RESPONSIBLE FOR OBTAINING FINAL APPROVAL ON THIS PERMIT
 CALL 410-313-1771 FOR INSPECTION OF SEPTIC SYSTEM**

P525181

HO-94-3203



TRENCH/DRAINFIELD DATA		
WIDTH	INLET	BOTTOM
3'	5'	6'
NUMBER OF TRENCHES		2
TOTAL LENGTH		200'
ABSORPTION AREA		600+Sidewall
DISTRIBUTION BOX LEVEL		Levelers
DISTRIBUTION BOX BAFFLE		Yes
DISTRIBUTION BOX PORT		Yes

SEPTIC TANK DATA	
SEPTIC TANK 1 LEVEL	Yes
CAPACITY	1500 GAL
SEAM LOC	Top
TANK LID DEPTH	0.5-1.5
BAFFLES	Yes
BAFFLE FILTER	No
MANHOLE LOC	Front
6" PORT LOC	Rear
WATERTIGHT TEST	No
SEPTIC TANK 2 LEVEL	N/A
CAPACITY	_____ GAL
SEAM LOC	_____
TANK LID DEPTH	_____
BAFFLES	_____
BAFFLE FILTER	_____
MANHOLE LOC	_____
6" PORT LOC	_____
WATERTIGHT TEST	_____

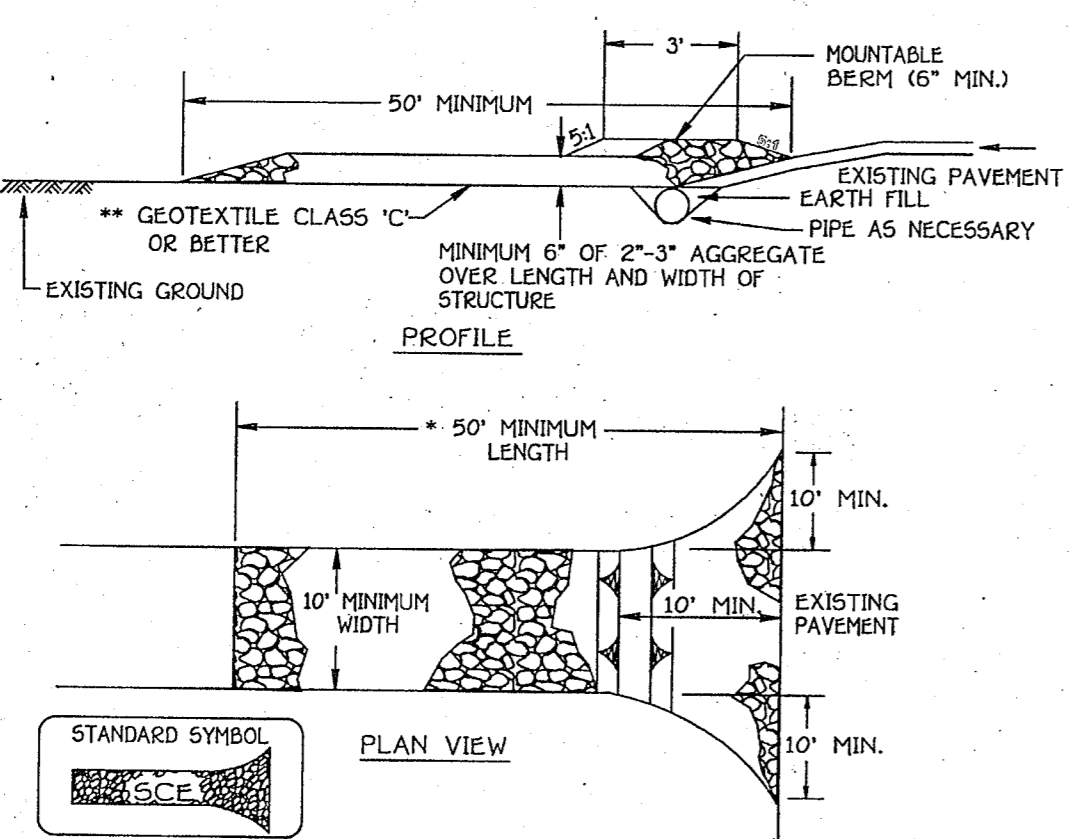
PRE-CONSTRUCTION 8/22/06 Changed trench inlet depth (BB)

INSTALLATION 8/22/06 + 8/23/06 System installed O.K. to backfill (BB)

FINAL INSPECTOR B. Baker DATE OF APPROVAL 8/23/06

SEDIMENT CONTROL NOTES

- A MINIMUM OF 48 HOURS NOTICE MUST BE GIVEN TO THE HOWARD COUNTY DEPARTMENT OF INSPECTIONS, LICENSING AND PERMITS, SEDIMENT CONTROL DIVISION PRIOR TO THE START OF ANY CONSTRUCTION (03-18-2006).
- ALL VEGETATIVE AND STRUCTURAL PRACTICES ARE TO BE INSTALLED ACCORDING TO THE PROVISIONS OF THIS PLAN AND ARE TO BE IN CONFORMANCE WITH THE MOST CURRENT MARYLAND STANDARDS AND SPECIFICATIONS FOR SOIL EROSION AND SEDIMENT CONTROL AND REVISIONS THEREOF.
- FOLLOWING INITIAL SOIL DISTURBANCE OR RE-DISTURBANCE, PERMANENT OR TEMPORARY STABILIZATION SHALL BE COMPLETED WITHIN 7 CALENDAR DAYS FOR ALL PERIMETER SEDIMENT CONTROL STRUCTURES, DICES, POSITIVE SLOPES AND ALL SLOPES STEEPER THAN 3:1. 14 DAYS AS TO ALL OTHER DISTURBED OR GRADED AREAS ON THE PROJECT SITE.
- ALL SEDIMENT TRAP/BAIRS SHOWN MUST BE FENCED AND WARNING SIGNS POSTED AROUND THEM RESPECTIVELY IN ACCORDANCE WITH VOL. 1 CHAPTER 12 OF THE HOWARD COUNTY DESIGN MANUAL, STORM DRAINAGE. ALL DISTURBED AREAS MUST BE STABILIZED WITHIN THE TIME PERIOD SPECIFIED ABOVE. IN ACCORDANCE WITH THE 1999 MARYLAND STANDARDS AND SPECIFICATIONS FOR SOIL EROSION AND SEDIMENT CONTROL FOR PERMANENT SEEDING (SEC. 50), TEMPORARY STABILIZATION WITH MULCH ALONE CAN ONLY BE DONE WHEN RECORDED SEEDING DATES DO NOT ALLOW FOR PROPER GERMINATION AND ESTABLISHMENT OF GRASSES.
- ALL SEDIMENT CONTROL STRUCTURES ARE TO REMAIN IN PLACE AND ARE TO BE MAINTAINED IN OPERATIVE CONDITION UNTIL PERMISSION FOR THEIR REMOVAL HAS BEEN OBTAINED FROM THE HOWARD COUNTY SEDIMENT CONTROL INSPECTOR.
- SEE ANALYSES:
 - TOTAL AREA OF SITE: 1.0274 ACRES
 - AREA DISTURBED: 0.9845 ACRES
 - AREA TO BE ROOFED OR PAVED: 0.1462 ACRES
 - AREA TO BE VEGETATIVELY STABILIZED: 0.2386 ACRES
 - TOTAL CUT: 140 CUBIC YARDS
 - OFFSITE MASTIC/BORROW AREA LOCATION: N/A
- ANY SEDIMENT CONTROL PRACTICE WHICH IS DISTURBED BY GRADING ACTIVITY FOR PLACEMENT OF UTILITIES MUST BE REPAIRED ON THE SAME DAY OF DISTURBANCE.
- ADDITIONAL SEDIMENT CONTROLS MUST BE PROVIDED, IF DEEMED NECESSARY BY THE HOWARD COUNTY SEDIMENT CONTROL INSPECTOR. APPROVAL OF THE INSPECTION AGENCY SHALL BE REQUESTED UPON COMPLETION OF INSTALLATION OF PERIMETER SEDIMENT CONTROL STRUCTURES, BUT BEFORE PROCEEDING WITH ANY OTHER EARTH DISTURBANCE, OR GRADING, OTHER BUILDING OR GRADING INSPECTION APPROVALS MAY NOT BE AUTHORIZED UNTIL THIS INITIAL APPROVAL BY THE INSPECTION AGENCY IS MADE.
- TRENCHES FOR THE CONSTRUCTION OF UTILITIES IS LIMITED TO THREE FEET LENGTHS OR THAT WHICH SHALL BE BACK-FILLED AND STABILIZED WITHIN ONE WORKING DAY, WHICHEVER IS SHORTER.

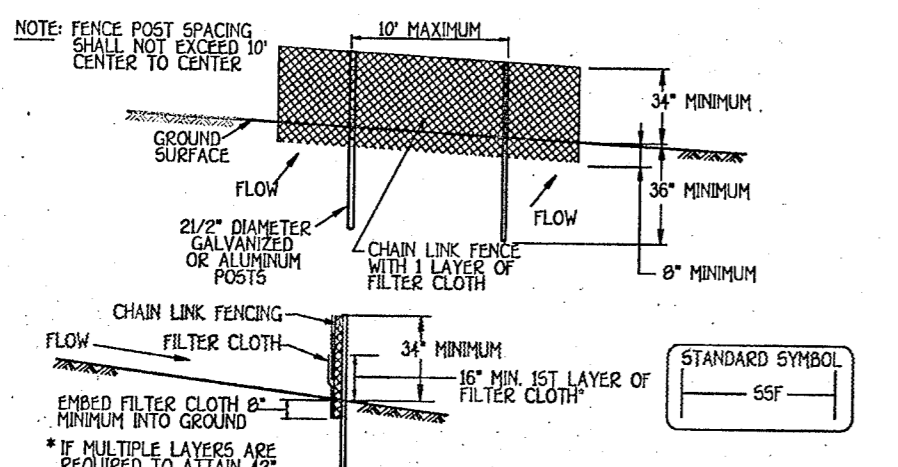


Construction Specification

- Length - minimum of 50' for single residence lots.
- Width - 10' minimum, shall be filed at the existing road to provide a turning radius.
- Geotextile fabric (filter cloth) shall be placed over the existing ground prior to construction of stone. The stone approval authority may not require single family residences to use geotextile.
- Stone - crushed aggregate (2" to 3" or reclaimed or recycled concrete equivalent) shall be placed at least 6" deep over the length and width of the entrance.
- Surface Water - all surface water flowing to or diverted toward construction entrances shall be piped through the entrance, maintaining positive drainage. Pipe entrances shall be stabilized construction entrance shall be protected with a mountable berm with 5:1 slopes and a minimum of 6" of stone over the pipe. Pipe shall be sized according to the drainage. When the SCE is located at a high spot and has no drainage to convey a pipe will not be necessary. Pipe should be required according to the drainage. When the SCE is located at a high spot and has no drainage to convey a pipe will not be necessary. Pipe should be required according to the drainage. When the SCE is located at a high spot and has no drainage to convey a pipe will not be necessary. Pipe should be required according to the drainage.
- Location - A stabilized construction entrance shall be located at every point where construction traffic enters or leaves a construction site. Vehicles leaving the site must travel over the entire length of the stabilized construction entrance.

STABILIZED CONSTRUCTION ENTRANCE

NOT TO SCALE



Construction Specifications

- Fencing shall be 42" in height and constructed in accordance with the latest Maryland State Highway Details for Chain Link Fencing. The specification for a 6" fence shall be used, substituting 42" fabric and 6" length posts.
- Chain link fence shall be fastened securely to the fence posts with wire ties. The lower tension wire, brace and frass rods, drive anchors and post caps are not required except on the ends of the fence.
- Filter cloth shall be fastened securely to the chain link fence with ties spaced every 24" at the top and mid section.
- Filter cloth shall be embedded a minimum of 6" into the ground.
- When two sections of filter cloth adjoin each other, they shall be overlapped by 6" and folded.
- Maintenance shall be performed as needed and silt buildup removed when "bulges" develop in the silt fence, or when silt reaches 50% of fence height.
- Filter cloth shall be fastened securely to each fence post with wire ties or staples at top and mid section and shall meet the following requirements for Geotextile Class F:

Tensile Strength	50 lbs/in (min)	Test: MMT 509
Tensile Modulus	20 lbs/in (min)	Test: MMT 509
Flow Rate	0.3 gal/(ft ² ·minute) (max)	Test: MMT 322
Filtering Efficiency	75% (min)	Test: MMT 322

SUPER SILT FENCE

NOT TO SCALE

TEMPORARY SEEDING NOTES

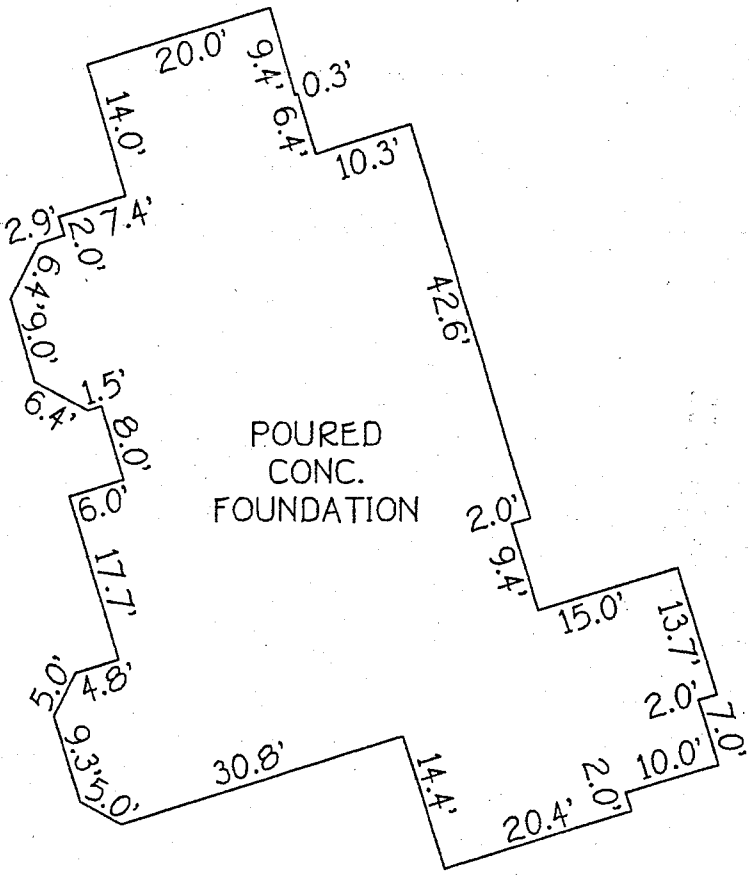
- APPLY TO GRADED OR CLEARED AREAS LIKELY TO BE RESTORED WHERE A SHORT-TERM VEGETATIVE COVER IS NEEDED.
- SEEDING PREPARATION: LOOSEN UPPER THREE INCHES OF SOIL BY RAKING, DISCING OR OTHER ACCEPTABLE MEANS BEFORE SEEDING. IF NOT PREVIOUSLY LOOSENED.
- SOIL AMENDMENTS: APPLY 600 LBS. PER ACRE 10-10-10 FERTILIZER (4 LBS./1000 SQ.FT.)
- SEEDING: FOR THE PERIODS MARCH 1 THROUGH APRIL 30, AND AUGUST 15 THROUGH NOVEMBER 15, SEED WITH 1 1/2 BUSHEL PER ANNUAL RYE. (2.5 LBS./ACRE OF WEEPING LOWGROSS (LOT 1) LBS./ACRE OF WEEPING LOWGROSS (LOT 2) LBS./ACRE OF WEEPING LOWGROSS (LOT 3) LBS./ACRE OF WEEPING LOWGROSS (LOT 4) LBS./ACRE OF WEEPING LOWGROSS (LOT 5) LBS./ACRE OF WEEPING LOWGROSS (LOT 6) LBS./ACRE OF WEEPING LOWGROSS (LOT 7) LBS./ACRE OF WEEPING LOWGROSS (LOT 8) LBS./ACRE OF WEEPING LOWGROSS (LOT 9) LBS./ACRE OF WEEPING LOWGROSS (LOT 10) LBS./ACRE OF WEEPING LOWGROSS (LOT 11) LBS./ACRE OF WEEPING LOWGROSS (LOT 12) LBS./ACRE OF WEEPING LOWGROSS (LOT 13) LBS./ACRE OF WEEPING LOWGROSS (LOT 14) LBS./ACRE OF WEEPING LOWGROSS (LOT 15) LBS./ACRE OF WEEPING LOWGROSS (LOT 16) LBS./ACRE OF WEEPING LOWGROSS (LOT 17) LBS./ACRE OF WEEPING LOWGROSS (LOT 18) LBS./ACRE OF WEEPING LOWGROSS (LOT 19) LBS./ACRE OF WEEPING LOWGROSS (LOT 20) LBS./ACRE OF WEEPING LOWGROSS (LOT 21) LBS./ACRE OF WEEPING LOWGROSS (LOT 22) LBS./ACRE OF WEEPING LOWGROSS (LOT 23) LBS./ACRE OF WEEPING LOWGROSS (LOT 24) LBS./ACRE OF WEEPING LOWGROSS (LOT 25) LBS./ACRE OF WEEPING LOWGROSS (LOT 26) LBS./ACRE OF WEEPING LOWGROSS (LOT 27) LBS./ACRE OF WEEPING LOWGROSS (LOT 28) LBS./ACRE OF WEEPING LOWGROSS (LOT 29) LBS./ACRE OF WEEPING LOWGROSS (LOT 30) LBS./ACRE OF WEEPING LOWGROSS (LOT 31) LBS./ACRE OF WEEPING LOWGROSS (LOT 32) LBS./ACRE OF WEEPING LOWGROSS (LOT 33) LBS./ACRE OF WEEPING LOWGROSS (LOT 34) LBS./ACRE OF WEEPING LOWGROSS (LOT 35) LBS./ACRE OF WEEPING LOWGROSS (LOT 36) LBS./ACRE OF WEEPING LOWGROSS (LOT 37) LBS./ACRE OF WEEPING LOWGROSS (LOT 38) LBS./ACRE OF WEEPING LOWGROSS (LOT 39) LBS./ACRE OF WEEPING LOWGROSS (LOT 40) LBS./ACRE OF WEEPING LOWGROSS (LOT 41) LBS./ACRE OF WEEPING LOWGROSS (LOT 42) LBS./ACRE OF WEEPING LOWGROSS (LOT 43) LBS./ACRE OF WEEPING LOWGROSS (LOT 44) LBS./ACRE OF WEEPING LOWGROSS (LOT 45) LBS./ACRE OF WEEPING LOWGROSS (LOT 46) LBS./ACRE OF WEEPING LOWGROSS (LOT 47) LBS./ACRE OF WEEPING LOWGROSS (LOT 48) LBS./ACRE OF WEEPING LOWGROSS (LOT 49) LBS./ACRE OF WEEPING LOWGROSS (LOT 50) LBS./ACRE OF WEEPING LOWGROSS (LOT 51) LBS./ACRE OF WEEPING LOWGROSS (LOT 52) LBS./ACRE OF WEEPING LOWGROSS (LOT 53) LBS./ACRE OF WEEPING LOWGROSS (LOT 54) LBS./ACRE OF WEEPING LOWGROSS (LOT 55) LBS./ACRE OF WEEPING LOWGROSS (LOT 56) LBS./ACRE OF WEEPING LOWGROSS (LOT 57) LBS./ACRE OF WEEPING LOWGROSS (LOT 58) LBS./ACRE OF WEEPING LOWGROSS (LOT 59) LBS./ACRE OF WEEPING LOWGROSS (LOT 60) LBS./ACRE OF WEEPING LOWGROSS (LOT 61) LBS./ACRE OF WEEPING LOWGROSS (LOT 62) LBS./ACRE OF WEEPING LOWGROSS (LOT 63) LBS./ACRE OF WEEPING LOWGROSS (LOT 64) LBS./ACRE OF WEEPING LOWGROSS (LOT 65) LBS./ACRE OF WEEPING LOWGROSS (LOT 66) LBS./ACRE OF WEEPING LOWGROSS (LOT 67) LBS./ACRE OF WEEPING LOWGROSS (LOT 68) LBS./ACRE OF WEEPING LOWGROSS (LOT 69) LBS./ACRE OF WEEPING LOWGROSS (LOT 70) LBS./ACRE OF WEEPING LOWGROSS (LOT 71) LBS./ACRE OF WEEPING LOWGROSS (LOT 72) LBS./ACRE OF WEEPING LOWGROSS (LOT 73) LBS./ACRE OF WEEPING LOWGROSS (LOT 74) LBS./ACRE OF WEEPING LOWGROSS (LOT 75) LBS./ACRE OF WEEPING LOWGROSS (LOT 76) LBS./ACRE OF WEEPING LOWGROSS (LOT 77) LBS./ACRE OF WEEPING LOWGROSS (LOT 78) LBS./ACRE OF WEEPING LOWGROSS (LOT 79) LBS./ACRE OF WEEPING LOWGROSS (LOT 80) LBS./ACRE OF WEEPING LOWGROSS (LOT 81) LBS./ACRE OF WEEPING LOWGROSS (LOT 82) LBS./ACRE OF WEEPING LOWGROSS (LOT 83) LBS./ACRE OF WEEPING LOWGROSS (LOT 84) LBS./ACRE OF WEEPING LOWGROSS (LOT 85) LBS./ACRE OF WEEPING LOWGROSS (LOT 86) LBS./ACRE OF WEEPING LOWGROSS (LOT 87) LBS./ACRE OF WEEPING LOWGROSS (LOT 88) LBS./ACRE OF WEEPING LOWGROSS (LOT 89) LBS./ACRE OF WEEPING LOWGROSS (LOT 90) LBS./ACRE OF WEEPING LOWGROSS (LOT 91) LBS./ACRE OF WEEPING LOWGROSS (LOT 92) LBS./ACRE OF WEEPING LOWGROSS (LOT 93) LBS./ACRE OF WEEPING LOWGROSS (LOT 94) LBS./ACRE OF WEEPING LOWGROSS (LOT 95) LBS./ACRE OF WEEPING LOWGROSS (LOT 96) LBS./ACRE OF WEEPING LOWGROSS (LOT 97) LBS./ACRE OF WEEPING LOWGROSS (LOT 98) LBS./ACRE OF WEEPING LOWGROSS (LOT 99) LBS./ACRE OF WEEPING LOWGROSS (LOT 100) LBS./ACRE OF WEEPING LOWGROSS (LOT 101) LBS./ACRE OF WEEPING LOWGROSS (LOT 102) LBS./ACRE OF WEEPING LOWGROSS (LOT 103) LBS./ACRE OF WEEPING LOWGROSS (LOT 104) LBS./ACRE OF WEEPING LOWGROSS (LOT 105) LBS./ACRE OF WEEPING LOWGROSS (LOT 106) LBS./ACRE OF WEEPING LOWGROSS (LOT 107) LBS./ACRE OF WEEPING LOWGROSS (LOT 108) LBS./ACRE OF WEEPING LOWGROSS (LOT 109) LBS./ACRE OF WEEPING LOWGROSS (LOT 110) LBS./ACRE OF WEEPING LOWGROSS (LOT 111) LBS./ACRE OF WEEPING LOWGROSS (LOT 112) LBS./ACRE OF WEEPING LOWGROSS (LOT 113) LBS./ACRE OF WEEPING LOWGROSS (LOT 114) LBS./ACRE OF WEEPING LOWGROSS (LOT 115) LBS./ACRE OF WEEPING LOWGROSS (LOT 116) LBS./ACRE OF WEEPING LOWGROSS (LOT 117) LBS./ACRE OF WEEPING LOWGROSS (LOT 118) LBS./ACRE OF WEEPING LOWGROSS (LOT 119) LBS./ACRE OF WEEPING LOWGROSS (LOT 120) LBS./ACRE OF WEEPING LOWGROSS (LOT 121) LBS./ACRE OF WEEPING LOWGROSS (LOT 122) LBS./ACRE OF WEEPING LOWGROSS (LOT 123) LBS./ACRE OF WEEPING LOWGROSS (LOT 124) LBS./ACRE OF WEEPING LOWGROSS (LOT 125) LBS./ACRE OF WEEPING LOWGROSS (LOT 126) LBS./ACRE OF WEEPING LOWGROSS (LOT 127) LBS./ACRE OF WEEPING LOWGROSS (LOT 128) LBS./ACRE OF WEEPING LOWGROSS (LOT 129) LBS./ACRE OF WEEPING LOWGROSS (LOT 130) LBS./ACRE OF WEEPING LOWGROSS (LOT 131) LBS./ACRE OF WEEPING LOWGROSS (LOT 132) LBS./ACRE OF WEEPING LOWGROSS (LOT 133) LBS./ACRE OF WEEPING LOWGROSS (LOT 134) LBS./ACRE OF WEEPING LOWGROSS (LOT 135) LBS./ACRE OF WEEPING LOWGROSS (LOT 136) LBS./ACRE OF WEEPING LOWGROSS (LOT 137) LBS./ACRE OF WEEPING LOWGROSS (LOT 138) LBS./ACRE OF WEEPING LOWGROSS (LOT 139) LBS./ACRE OF WEEPING LOWGROSS (LOT 140) LBS./ACRE OF WEEPING LOWGROSS (LOT 141) LBS./ACRE OF WEEPING LOWGROSS (LOT 142) LBS./ACRE OF WEEPING LOWGROSS (LOT 143) LBS./ACRE OF WEEPING LOWGROSS (LOT 144) LBS./ACRE OF WEEPING LOWGROSS (LOT 145) LBS./ACRE OF WEEPING LOWGROSS (LOT 146) LBS./ACRE OF WEEPING LOWGROSS (LOT 147) LBS./ACRE OF WEEPING LOWGROSS (LOT 148) LBS./ACRE OF WEEPING LOWGROSS (LOT 149) LBS./ACRE OF WEEPING LOWGROSS (LOT 150) LBS./ACRE OF WEEPING LOWGROSS (LOT 151) LBS./ACRE OF WEEPING LOWGROSS (LOT 152) LBS./ACRE OF WEEPING LOWGROSS (LOT 153) LBS./ACRE OF WEEPING LOWGROSS (LOT 154) LBS./ACRE OF WEEPING LOWGROSS (LOT 155) LBS./ACRE OF WEEPING LOWGROSS (LOT 156) LBS./ACRE OF WEEPING LOWGROSS (LOT 157) LBS./ACRE OF WEEPING LOWGROSS (LOT 158) LBS./ACRE OF WEEPING LOWGROSS (LOT 159) LBS./ACRE OF WEEPING LOWGROSS (LOT 160) LBS./ACRE OF WEEPING LOWGROSS (LOT 161) LBS./ACRE OF WEEPING LOWGROSS (LOT 162) LBS./ACRE OF WEEPING LOWGROSS (LOT 163) LBS./ACRE OF WEEPING LOWGROSS (LOT 164) LBS./ACRE OF WEEPING LOWGROSS (LOT 165) LBS./ACRE OF WEEPING LOWGROSS (LOT 166) LBS./ACRE OF WEEPING LOWGROSS (LOT 167) LBS./ACRE OF WEEPING LOWGROSS (LOT 168) LBS./ACRE OF WEEPING LOWGROSS (LOT 169) LBS./ACRE OF WEEPING LOWGROSS (LOT 170) LBS./ACRE OF WEEPING LOWGROSS (LOT 171) LBS./ACRE OF WEEPING LOWGROSS (LOT 172) LBS./ACRE OF WEEPING LOWGROSS (LOT 173) LBS./ACRE OF WEEPING LOWGROSS (LOT 174) LBS./ACRE OF WEEPING LOWGROSS (LOT 175) LBS./ACRE OF WEEPING LOWGROSS (LOT 176) LBS./ACRE OF WEEPING LOWGROSS (LOT 177) LBS./ACRE OF WEEPING LOWGROSS (LOT 178) LBS./ACRE OF WEEPING LOWGROSS (LOT 179) LBS./ACRE OF WEEPING LOWGROSS (LOT 180) LBS./ACRE OF WEEPING LOWGROSS (LOT 181) LBS./ACRE OF WEEPING LOWGROSS (LOT 182) LBS./ACRE OF WEEPING LOWGROSS (LOT 183) LBS./ACRE OF WEEPING LOWGROSS (LOT 184) LBS./ACRE OF WEEPING LOWGROSS (LOT 185) LBS./ACRE OF WEEPING LOWGROSS (LOT 186) LBS./ACRE OF WEEPING LOWGROSS (LOT 187) LBS./ACRE OF WEEPING LOWGROSS (LOT 188) LBS./ACRE OF WEEPING LOWGROSS (LOT 189) LBS./ACRE OF WEEPING LOWGROSS (LOT 190) LBS./ACRE OF WEEPING LOWGROSS (LOT 191) LBS./ACRE OF WEEPING LOWGROSS (LOT 192) LBS./ACRE OF WEEPING LOWGROSS (LOT 193) LBS./ACRE OF WEEPING LOWGROSS (LOT 194) LBS./ACRE OF WEEPING LOWGROSS (LOT 195) LBS./ACRE OF WEEPING LOWGROSS (LOT 196) LBS./ACRE OF WEEPING LOWGROSS (LOT 197) LBS./ACRE OF WEEPING LOWGROSS (LOT 198) LBS./ACRE OF WEEPING LOWGROSS (LOT 199) LBS./ACRE OF WEEPING LOWGROSS (LOT 200) LBS./ACRE OF WEEPING LOWGROSS (LOT 201) LBS./ACRE OF WEEPING LOWGROSS (LOT 202) LBS./ACRE OF WEEPING LOWGROSS (LOT 203) LBS./ACRE OF WEEPING LOWGROSS (LOT 204) LBS./ACRE OF WEEPING LOWGROSS (LOT 205) LBS./ACRE OF WEEPING LOWGROSS (LOT 206) LBS./ACRE OF WEEPING LOWGROSS (LOT 207) LBS./ACRE OF WEEPING LOWGROSS (LOT 208) LBS./ACRE OF WEEPING LOWGROSS (LOT 209) LBS./ACRE OF WEEPING LOWGROSS (LOT 210) LBS./ACRE OF WEEPING LOWGROSS (LOT 211) LBS./ACRE OF WEEPING LOWGROSS (LOT 212) LBS./ACRE OF WEEPING LOWGROSS (LOT 213) LBS./ACRE OF WEEPING LOWGROSS (LOT 214) LBS./ACRE OF WEEPING LOWGROSS (LOT 215) LBS./ACRE OF WEEPING LOWGROSS (LOT 216) LBS./ACRE OF WEEPING LOWGROSS (LOT 217) LBS./ACRE OF WEEPING LOWGROSS (LOT 218) LBS./ACRE OF WEEPING LOWGROSS (LOT 219) LBS./ACRE OF WEEPING LOWGROSS (LOT 220) LBS./ACRE OF WEEPING LOWGROSS (LOT 221) LBS./ACRE OF WEEPING LOWGROSS (LOT 222) LBS./ACRE OF WEEPING LOWGROSS (LOT 223) LBS./ACRE OF WEEPING LOWGROSS (LOT 224) LBS./ACRE OF WEEPING LOWGROSS (LOT 225) LBS./ACRE OF WEEPING LOWGROSS (LOT 226) LBS./ACRE OF WEEPING LOWGROSS (LOT 227) LBS./ACRE OF WEEPING LOWGROSS (LOT 228) LBS./ACRE OF WEEPING LOWGROSS (LOT 229) LBS./ACRE OF WEEPING LOWGROSS (LOT 230) LBS./ACRE OF WEEPING LOWGROSS (LOT 231) LBS./ACRE OF WEEPING LOWGROSS (LOT 232) LBS./ACRE OF WEEPING LOWGROSS (LOT 233) LBS./ACRE OF WEEPING LOWGROSS (LOT 234) LBS./ACRE OF WEEPING LOWGROSS (LOT 235) LBS./ACRE OF WEEPING LOWGROSS (LOT 236) LBS./ACRE OF WEEPING LOWGROSS (LOT 237) LBS./ACRE OF WEEPING LOWGROSS (LOT 238) LBS./ACRE OF WEEPING LOWGROSS (LOT 239) LBS./ACRE OF WEEPING LOWGROSS (LOT 240) LBS./ACRE OF WEEPING LOWGROSS (LOT 241) LBS./ACRE OF WEEPING LOWGROSS (LOT 242) LBS./ACRE OF WEEPING LOWGROSS (LOT 243) LBS./ACRE OF WEEPING LOWGROSS (LOT 244) LBS./ACRE OF WEEPING LOWGROSS (LOT 245) LBS./ACRE OF WEEPING LOWGROSS (LOT 246) LBS./ACRE OF WEEPING LOWGROSS (LOT 247) LBS./ACRE OF WEEPING LOWGROSS (LOT 248) LBS./ACRE OF WEEPING LOWGROSS (LOT 249) LBS./ACRE OF WEEPING LOWGROSS (LOT 250) LBS./ACRE OF WEEPING LOWGROSS (LOT 251) LBS./ACRE OF WEEPING LOWGROSS (LOT 252) LBS./ACRE OF WEEPING LOWGROSS (LOT 253) LBS./ACRE OF WEEPING LOWGROSS (LOT 254) LBS./ACRE OF WEEPING LOWGROSS (LOT 255) LBS./ACRE OF WEEPING LOWGROSS (LOT 256) LBS./ACRE OF WEEPING LOWGROSS (LOT 257) LBS./ACRE OF WEEPING LOWGROSS (LOT 258) LBS./ACRE OF WEEPING LOWGROSS (LOT 259) LBS./ACRE OF WEEPING LOWGROSS (LOT 260) LBS./ACRE OF WEEPING LOWGROSS (LOT 261) LBS./ACRE OF WEEPING LOWGROSS (LOT 262) LBS./ACRE OF WEEPING LOWGROSS (LOT 263) LBS./ACRE OF WEEPING LOWGROSS (LOT 264) LBS./ACRE OF WEEPING LOWGROSS (LOT 265) LBS./ACRE OF WEEPING LOWGROSS (LOT 266) LBS./ACRE OF WEEPING LOWGROSS (LOT 267) LBS./ACRE OF WEEPING LOWGROSS (LOT 268) LBS./ACRE OF WEEPING LOWGROSS (LOT 269) LBS./ACRE OF WEEPING LOWGROSS (LOT 270) LBS./ACRE OF WEEPING LOWGROSS (LOT 271) LBS./ACRE OF WEEPING LOWGROSS (LOT 272) LBS./ACRE OF WEEPING LOWGROSS (LOT 273) LBS./ACRE OF WEEPING LOWGROSS (LOT 274) LBS./ACRE OF WEEPING LOWGROSS (LOT 275) LBS./ACRE OF WEEPING LOWGROSS (LOT 276) LBS./ACRE OF WEEPING LOWGROSS (LOT 277) LBS./ACRE OF WEEPING LOWGROSS (LOT 278) LBS./ACRE OF WEEPING LOWGROSS (LOT 279) LBS./ACRE OF WEEPING LOWGROSS (LOT 280) LBS./ACRE OF WEEPING LOWGROSS (LOT 281) LBS./ACRE OF WEEPING LOWGROSS (LOT 282) LBS./ACRE OF WEEPING LOWGROSS (LOT 283) LBS./ACRE OF WEEPING LOWGROSS (LOT 284) LBS./ACRE OF WEEPING LOWGROSS (LOT 285) LBS./ACRE OF WEEPING LOWGROSS (LOT 286) LBS./ACRE OF WEEPING LOWGROSS (LOT 287) LBS./ACRE OF WEEPING LOWGROSS (LOT 288) LBS./ACRE OF WEEPING LOWGROSS (LOT 289) LBS./ACRE OF WEEPING LOWGROSS (LOT 290) LBS./ACRE OF WEEPING LOWGROSS (LOT 291) LBS./ACRE OF WEEPING LOWGROSS (LOT 292) LBS./ACRE OF WEEPING LOWGROSS (LOT 293) LBS./ACRE OF WEEPING LOWGROSS (LOT 294) LBS./ACRE OF WEEPING LOWGROSS (LOT 295) LBS./ACRE OF WEEPING LOWGROSS (LOT 296) LBS./ACRE OF WEEPING LOWGROSS (LOT 297) LBS./ACRE OF WEEPING LOWGROSS (LOT 298) LBS./ACRE OF WEEPING LOWGROSS (LOT 299) LBS./ACRE OF WEEPING LOWGROSS (LOT 300) LBS./ACRE OF WEEPING LOWGROSS (LOT 301) LBS./ACRE OF WEEPING LOWGROSS (LOT 302) LBS./ACRE OF WEEPING LOWGROSS (LOT 303) LBS./ACRE OF WEEPING LOWGROSS (LOT 304) LBS./ACRE OF WEEPING LOWGROSS (LOT 305) LBS./ACRE OF WEEPING LOWGROSS (LOT 306) LBS./ACRE OF WEEPING LOWGROSS (LOT 307) LBS./ACRE OF WEEPING LOWGROSS (LOT 308) LBS./ACRE OF WEEPING LOWGROSS (LOT 309) LBS./ACRE OF WEEPING LOWGROSS (LOT 310) LBS./ACRE OF WEEPING LOWGROSS (LOT 311) LBS./ACRE OF WEEPING LOWGROSS (LOT 312) LBS./ACRE OF WEEPING LOWGROSS (LOT 313) LBS./ACRE OF WEEPING LOWGROSS (LOT 314) LBS./ACRE OF WEEPING LOWGROSS (LOT 315) LBS./ACRE OF WEEPING LOWGROSS (LOT 316) LBS./ACRE OF WEEPING LOWGROSS (LOT 317) LBS./ACRE OF WEEPING LOWGROSS (LOT 318) LBS./ACRE OF WEEPING LOWGROSS (LOT 319) LBS./ACRE OF WEEPING LOWGROSS (LOT 320) LBS./ACRE OF WEEPING LOWGROSS (LOT 321) LBS./ACRE OF WEEPING LOWGROSS (LOT 322) LBS./ACRE OF WEEPING LOWGROSS (LOT 323) LBS./ACRE OF WEEPING LOWGROSS (LOT 324) LBS./ACRE OF WEEPING LOWGROSS (LOT 325) LBS./ACRE OF WEEPING LOWGROSS (LOT 326) LBS./ACRE OF WEEPING LOWGROSS (LOT 327) LBS./ACRE OF WEEPING LOWGROSS (LOT 328) LBS./ACRE OF WEEPING LOWGROSS (LOT 329) LBS./ACRE OF WEEPING LOWGROSS (LOT 330) LBS./ACRE OF WEEPING LOWGROSS (LOT 331) LBS./ACRE OF WEEPING LOWGROSS (LOT 332) LBS./ACRE OF WEEPING LOWGROSS (LOT 333) LBS./ACRE OF WEEPING LOWGROSS (LOT 334) LBS./ACRE OF WEEPING LOWGROSS (LOT 335) LBS./ACRE OF WEEPING LOWGROSS (LOT 336) LBS./ACRE OF WEEPING LOWGROSS (LOT 337) LBS./ACRE OF WEEPING LOWGROSS (LOT 338) LBS./ACRE OF WEEPING LOWGROSS (LOT 339) LBS./ACRE OF WEEPING LOWGROSS (LOT 340) LBS./ACRE OF WEEPING LOWGROSS (LOT 341) LBS./ACRE OF WEEPING LOWGROSS (LOT 342) LBS./ACRE OF WEEPING LOWGROSS (LOT 343) LBS./ACRE OF WEEPING LOWGROSS (LOT 344) LBS./ACRE OF WEEPING LOWGROSS (LOT 345) LBS./ACRE OF WEEPING LOWGROSS (LOT 346) LBS./ACRE OF WEEPING LOWGROSS (LOT 347) LBS./ACRE OF WEEPING LOWGROSS (LOT 348) LBS./ACRE OF WEEPING LOWGROSS (LOT 349) LBS./ACRE OF WEEPING LOWGROSS (LOT 350) LBS./ACRE OF WEEPING LOWGROSS (LOT 351) LBS./ACRE OF WEEPING LOWGROSS (LOT 352) LBS./ACRE OF WEEPING LOWGROSS (LOT 353) LBS./ACRE OF WEEPING LOWGROSS (LOT 354) LBS./ACRE OF WEEPING LOWGROSS (LOT 355) LBS./ACRE OF WEEPING LOWGROSS (LOT 356) LBS./ACRE OF WEEPING LOWGROSS (LOT 357) LBS./ACRE OF WEEPING LOWGROSS (LOT 358) LBS./ACRE OF WEEPING LOWGROSS (LOT 359) LBS./ACRE OF WEEPING LOWGROSS (LOT 360) LBS./ACRE OF WEEPING LOWGROSS (LOT 361) LBS./ACRE OF WEEPING LOWGROSS (LOT 362) LBS./ACRE OF WEEPING LOWGROSS (LOT 363) LBS./ACRE OF WEEPING LOWGROSS (LOT 364) LBS./ACRE OF WEEPING LOWGROSS (LOT 365) LBS./ACRE OF WEEPING LOWGROSS (LOT 366) LBS./ACRE OF WEEPING LOWGROSS (LOT 367) LBS./ACRE OF WEEPING LOWGROSS (LOT 368) LBS./ACRE OF WEEPING LOWGROSS (LOT 369) LBS./ACRE OF WEEPING LOWGROSS (LOT 370) LBS./ACRE OF WEEPING LOWGROSS (LOT 371) LBS./ACRE OF WEEPING LOWGROSS (LOT 372) LBS./ACRE OF WEEPING LOWGROSS (LOT 373) LBS./ACRE OF WEEPING LOWGROSS (LOT 374) LBS./ACRE OF WEEPING LOWGROSS (LOT 375) LBS./ACRE OF WEEPING LOWGROSS (LOT 376) LBS./ACRE OF WEEPING LOWGROSS (LOT 377) LBS./ACRE OF WEEPING LOWGROSS (LOT 378) LBS./ACRE OF WEEPING LOWGROSS (LOT 379) LBS./ACRE OF WEEPING LOWGROSS (LOT 380) LBS./ACRE OF WEEPING LOWGROSS (LOT 381) LBS./ACRE OF WEEPING LOWGROSS (LOT 382) LBS./ACRE OF WEEPING LOWGROSS (LOT 383) LBS./ACRE OF WEEPING LOWGROSS (LOT 384) LBS./ACRE OF WEEPING LOWGROSS (LOT 385) LBS./ACRE OF WEEPING LOWGROSS (LOT 386) LBS./ACRE OF WEEPING LOWGROSS (LOT 387) LBS./ACRE OF WEEPING LOWGROSS (LOT 388) LBS./ACRE OF WEEPING LOWGROSS (LOT 389) LBS./ACRE OF WEEPING LOWGROSS (LOT 390) LBS./ACRE OF WEEPING LOWGROSS (LOT 391) LBS./ACRE OF WEEPING LOWGROSS (LOT 392) LBS./ACRE OF WEEPING LOWGROSS (LOT 393) LBS./ACRE OF WEEPING LOWGROSS (LOT 394) LBS./ACRE OF WEEPING LOWGROSS (LOT 395) LBS./ACRE OF WEEPING LOWGROSS (LOT 396) LBS./ACRE OF WEEPING LOWGROSS (LOT 397) LBS./ACRE OF WEEPING LOWGROSS (LOT 398) LBS./ACRE OF WEEPING LOWGROSS (LOT 399) LBS./ACRE OF WEEPING LOWGROSS (LOT 400) LBS./ACRE OF WEEPING LOWGROSS (LOT 401) LBS./ACRE OF WEEPING LOWGROSS (LOT 402) LBS./ACRE OF WEEPING LOWGROSS (LOT 403) LBS./ACRE OF WEEPING LOWGROSS (LOT 404) LBS./ACRE OF WEEPING LOWGROSS (LOT 405) LBS./ACRE OF WEEPING LOWGROSS (LOT 406) LBS./ACRE OF WEEPING LOWGROSS (LOT 407) LBS./ACRE OF WEEPING LOWGROSS (LOT 408) LBS./ACRE OF WEEPING LOWGROSS (LOT 409) LBS./ACRE OF WEEPING LOWGROSS (LOT 410) LBS./ACRE OF WEEPING LOWGROSS (LOT 411) LBS./ACRE OF WEEPING LOWGROSS (LOT 412) LBS./ACRE OF WEEPING LOWGROSS (LOT 413) LBS./ACRE OF WEEPING LOWGROSS (LOT 414) LBS./ACRE OF WEEPING LOWGROSS (LOT 415) LBS./ACRE OF WEEPING LOWGROSS (LOT 416) LBS./ACRE OF WEEPING LOWGROSS (LOT 417) LBS./ACRE OF WEEPING LOWGROSS (LOT 418) LBS./ACRE OF WEEPING LOWGROSS (LOT 419) LBS./ACRE OF WEEPING LOWGROSS (LOT 420) LBS./ACRE OF WEEPING LOWGROSS (LOT 421) LBS./ACRE OF WEEPING LOWGROSS (LOT 422) LBS./ACRE OF WEEPING LOWGROSS (LOT 423) LBS./ACRE OF WEEPING LOWGROSS (LOT 424) LBS./ACRE OF WEEPING LOWGROSS (LOT 425) LBS./ACRE OF WEEPING LOWGROSS (LOT 426) LBS./ACRE OF WEEPING LOWGROSS (LOT 427) LBS./ACRE OF WEEPING LOWGROSS (LOT 428) LBS./ACRE OF WEEPING LOWGROSS (LOT 429) LBS./ACRE OF WEEPING LOWGROSS (LOT 430) LBS./ACRE OF WEEPING LOWGROSS (LOT 431) LBS./ACRE OF WEEPING LOWGROSS (LOT 432) LBS./ACRE OF WEEPING LOWGROSS (LOT 433) LBS./ACRE OF WEEPING LOWGROSS (LOT 434) LBS./ACRE OF WEEPING LOWGROSS (LOT 435) LBS./ACRE OF WEEPING LOWGROSS (LOT 436) LBS./ACRE OF WEEPING LOWGROSS (LOT 437) LBS./ACRE OF WEEPING LOWGROSS (LOT 438) LBS./ACRE OF WEEPING LOWGROSS (LOT 439) LBS./ACRE OF WEEPING LOWGROSS (LOT 440) LBS./ACRE OF WEEPING LOWGROSS (LOT 441) LBS./ACRE OF WEEPING LOWGROSS (LOT 442) LBS./ACRE OF WEEPING LOWGROSS (LOT 443) LBS./ACRE OF WEEPING LOWGROSS (LOT 444) LBS./ACRE OF WEEPING LOWGROSS (LOT 445) LBS./ACRE OF WEEPING LOWGROSS (LOT 446) LBS./ACRE OF WEEPING LOWGROSS (LOT 447) LBS./ACRE OF WEEPING LOWGROSS (LOT 448) LBS./ACRE OF WEEPING LOWGROSS (LOT 449) LBS./ACRE OF WEEPING LOWGROSS (LOT 450) LBS./ACRE OF WEEPING LOWGROSS (LOT 451) LBS./ACRE OF WEEPING LOWGROSS (LOT 452) LBS./ACRE OF WEEPING LOWGROSS (LOT 453) LBS./ACRE OF WEEPING LOWGROSS (LOT 454) LBS./ACRE OF WEEPING LOWGROSS (LOT 455) LBS./ACRE OF WEEPING LOWGROSS (LOT 456) LBS./ACRE OF WEEPING LOWGROSS (LOT 457) LBS./ACRE OF WEEPING LOWGROSS (LOT 458) LBS./ACRE OF WEEPING LOWGROSS (LOT 459) LBS./ACRE OF WEEPING LOWGROSS (LOT 460) LBS./ACRE OF WEEPING LOWGROSS (LOT 461) LBS./ACRE OF WEEPING LOWGROSS (LOT 462) LBS./ACRE OF WEEPING LOWGROSS (LOT 463) LBS./ACRE OF WEEPING LOWGROSS (LOT 464) LBS./ACRE OF WEEPING LOWGROSS (LOT 465) LBS./ACRE OF WEEPING LOWGROSS (LOT 466) LBS./ACRE OF WEEPING LOWGROSS (LOT 467) LBS./ACRE OF WEEPING LOWGROSS (LOT 468) LBS./ACRE OF WEEPING LOWGROSS (LOT 469) LBS./ACRE OF WEEPING LOWGROSS (LOT 470) LBS./ACRE OF WEEPING LOWGROSS (LOT 471) LBS./ACRE OF WEEPING LOWGROSS (LOT 472) LBS./ACRE OF WEEPING LOWGROSS (LOT 473) LBS./ACRE OF WEEPING LOWGROSS (LOT 474) LBS./ACRE OF WEEPING LOWGROSS (LOT 475) LBS./ACRE OF WEEPING LOWGROSS (LOT 476) LBS./ACRE OF WEEPING LOWGROSS (LOT 477) LBS./ACRE OF WEEPING LOWGROSS (LOT 478) LBS./ACRE OF WEEPING LOWGROSS (LOT 479) LBS./ACRE OF WEEPING LOWGROSS (LOT 480) LBS./ACRE OF WEEPING LOWGROSS (LOT 481) LBS./ACRE OF WEEPING LOWGROSS (LOT 482) LBS./ACRE OF WEEPING LOWGROSS (LOT 483) LBS./ACRE OF WEEPING LOWGROSS (LOT 484) LBS./ACRE OF WEEPING LOWGROSS (LOT 485) LBS./ACRE OF WEEPING LOWGROSS (LOT 486) LBS./ACRE OF WEEPING LOWGROSS (LOT 487) LBS./ACRE OF WEEPING LOWGROSS (LOT 488) LBS./ACRE OF WEEPING LOWGROSS (LOT 489) LBS./ACRE OF WEEPING LOWGROSS (LOT 490) LBS./ACRE OF WEEPING LOWGROSS (LOT 491) LBS./ACRE OF WEEPING LOWGROSS (LOT 492) LBS./ACRE OF WEEPING LOWGROSS (LOT 493) LBS./ACRE OF WEEPING LOWGROSS (LOT 494) LBS./ACRE OF WEEPING LOWGROSS (LOT 495) LBS./ACRE OF WEEPING LOWGROSS (LOT 496) LBS./ACRE OF WEEPING LOWGROSS (LOT 497) LBS./ACRE OF WEEPING LOWGROSS (LOT 498) LBS./ACRE OF WEEPING LOWGROSS (LOT 499) LBS./ACRE OF WEEPING LOWGROSS (LOT 500) LBS./ACRE OF WEEPING LOWGROSS (LOT 501) LBS./ACRE OF WEEPING LOWGROSS (LOT 502) LBS./ACRE OF WEEPING LOWGROSS (LOT 503) LBS./ACRE OF WEEPING LOWGROSS (LOT 504) LBS./ACRE OF WEEPING LOWGROSS (LOT 505) LBS./ACRE OF WEEPING LOWGROSS (LOT 506) LBS./ACRE OF WEEPING LOWGROSS (LOT 507) LBS./ACRE OF WEEPING LOWGROSS (LOT 508) LBS./ACRE OF WEEPING LOWGROSS (LOT 509) LBS./ACRE OF WEEPING LOWGROSS (LOT 510) LBS./ACRE OF WEEPING LOWGROSS (LOT 511) LBS./ACRE OF WEEPING LOWGROSS (LOT 512) LBS./ACRE OF WEEPING LOWGROSS (LOT 513) LBS./ACRE OF WEEPING LOWGROSS (LOT 514) LBS./ACRE OF WEEPING LOWGROSS (LOT 515) LBS./ACRE OF WEEPING LOWGROSS (LOT 516) LBS./ACRE OF WEEPING LOWGROSS (LOT 517) LBS./ACRE OF WEEPING LOWGROSS (LOT 518) LBS./ACRE OF WEEPING LOWGROSS (LOT 519) LBS./ACRE OF WEEPING LOWGROSS (LOT 520) LBS./ACRE OF WEEPING LOWGROSS (LOT 521) LBS./ACRE OF WEEPING LOWGROSS (LOT 522) LBS./ACRE OF WEEPING LOWGROSS (LOT 523) LBS./ACRE OF WEEPING LOWGROSS (LOT 524) LBS./ACRE OF WEEPING LOWGROSS (LOT 525) LBS./ACRE OF WEEPING LOWGROSS (LOT 526) LBS./ACRE OF

GENERAL NOTES:

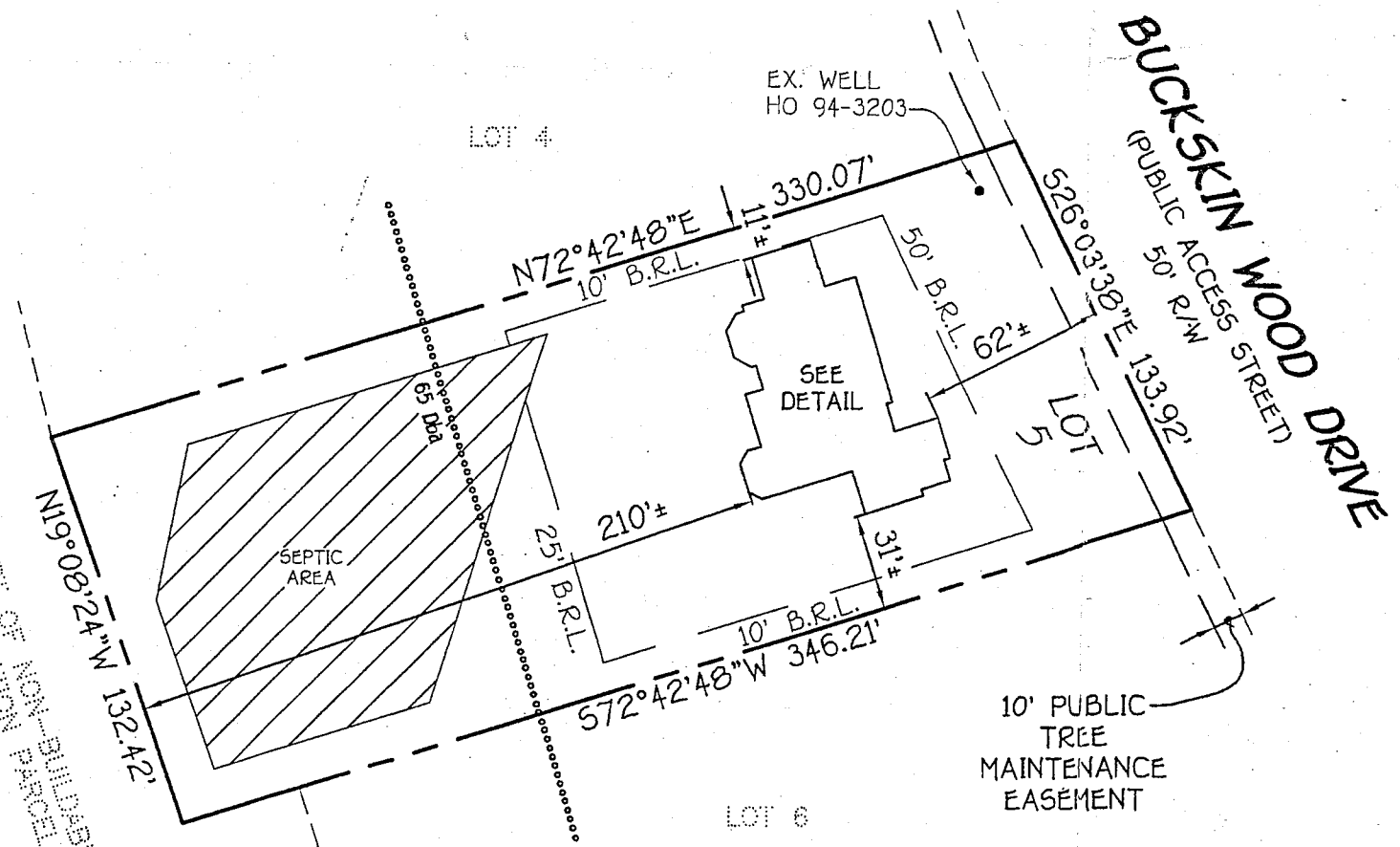
- 1) THIS LOCATION DRAWING IS PREPARED FOR THE BENEFIT OF THE CLIENT SIGNING THE HOUSE LOCATION SURVEY APPROVAL FORM INsofar AS IT IS REQUIRED BY A LENDER OR TITLE INSURANCE COMPANY OR ITS AGENTS IN CONNECTION WITH THE CONTEMPLATED TRANSFER, FINANCING OR REFINANCING OF THE PROPERTY SHOWN HEREON. UNLESS INDICATED AS BEING A BOUNDARY SURVEY, THIS LOCATION DRAWING IS NOT INTENDED FOR USE IN THE ESTABLISHMENT OF PROPERTY LINES AND IS NOT TO BE RELIED UPON FOR THE ESTABLISHMENT OR LOCATIONS OF FENCES, GARAGES, BUILDINGS OR OTHER EXISTING OR FUTURE IMPROVEMENTS. AS A RESULT, THIS LOCATION DRAWING DOES NOT PROVIDE FOR ACCURATE IDENTIFICATION OF PROPERTY LINES, BUT SUCH IDENTIFICATION MAY NOT BE REQUIRED FOR THE TRANSFER OF TITLE OR SECURING FINANCING FOR RE-FINANCING.
- 2) SUBJECT PROPERTY IS SHOWN IN ZONE C ON THE NATIONAL FLOOD INSURANCE PROGRAM FLOOD INSURANCE RATE MAP OF HOWARD COUNTY, MARYLAND, COMMUNITY PANEL No. 2400440021B EFFECTIVE DEC. 4, 1996.
- 3) THE OFFSETS FROM BUILDING LINE TO PROPERTY LINE AS SHOWN ON THE PLAT HEREON ARE TO AN ACCURACY OF PLUS OR MINUS 0.5'(+).
- 4) NO TITLE REPORT FURNISHED. SUBJECT TO ALL EASEMENTS, RIGHTS OF WAY AND CONDITIONS OF RECORD.
- 5) THE EXISTING WELL(S) SHOWN ON THIS PLAN (IDENTIFIED WITH THE ATTACHED WELL TAG NUMBER HO-94-3203) HAS BEEN FIELD LOCATED BY FISHER, COLLINS AND CARTER, INC. PROFESSIONAL LAND SURVEYORS AND IS ACCURATELY SHOWN.



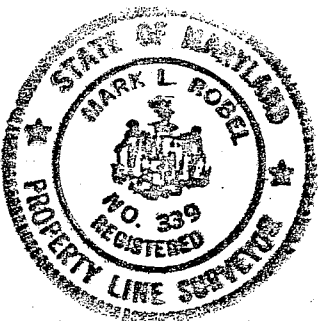
Well check
OK.
1/25/06
GAC



DETAIL
1"=20'



PART OF NON-BUILDABLE
 PRESERVATION PARCEL A
 FOREST CONSERVATION
 EASEMENT #12 AND
 SEPTIC WATER EASEMENT
 STORAGE EASEMENT



Mark L. Bobel 6/30/06
 PROFESSIONAL LAND SURVEYOR DATE
 REG. # 339

*4341 BUCKSKIN WOOD DRIVE
 B.R.L.= BUILDING RESTRICTION LINE
 TOP OF FOUNDATION ELEV.= 621.5'

HOUSE LOCATION DRAWING

FOUNDATION LOCATION: 6/29/06
 FINAL LOCATION: _____
 BOUNDARY SURVEY: _____
 SCALE: 1"=60'
 DATE: 06/30/06
 DRAWN BY: V.L.J.
 CHECKED BY: M.L.R.
 PROJECT No.: 61700

LOT 5
 REVISION PLAT
 BUCKSKIN RIDGE
 LOTS 1 THRU 47
 AND PRESERVATION PARCEL A
 FIFTH ELECTION DISTRICT
 HOWARD COUNTY, MARYLAND
 PLAT. NO. 15704

