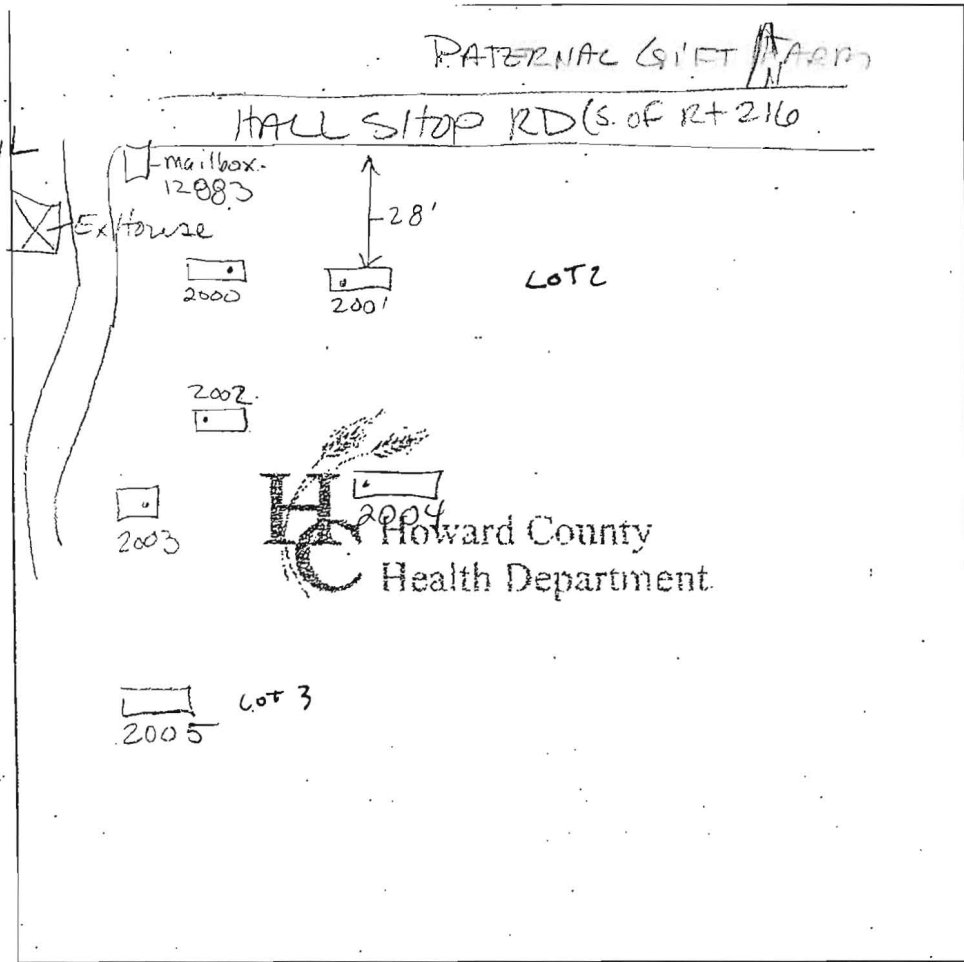


2002
 2000/2001
 wk rd
 V. micac
 Lamm pockets hwy
 wk thumbprint
 ribbons 1-1/2" par
 ↓
 5'
 brn, lt brn
 F. grained
 SL
 trace Rock
 Bottom
 13'



2003
 wk red
 hwy L
 1 pl,
 w.c., 1 sbk
 6'
 lt brn
 SL
 w.c. s.g.
 Rock < 50%
 Refusal
 10'

2004
 Cobble 10-15%
 wk rd
 10"
 brn
 hwy L
 str. rd
 brn
 8'
 fragmented
 Rock lens
 Flagstone
 30% pocket
 11'
 brn
 SL
 f. medgr.
 sgwc
 Bottom
 15'

DATE	TEST #	DEPTH	START	BREAK 1" DROP	STOP 2" DROP	TIME OF 2nd INCH	P/F/H
4-21-06	2000	5 1/2' M	9:31	9:32	9:35	3+	P
	2002	5' M	9:36	9:38	9:41	2+	P
	2001	Visual					P
	2003	6' 3"	9:39	9:41	9:43	2+	P
	2004	4' 2"	9:42	9:43	9:50	7	P
	2005	SEE 2000, 2002, 2001					P
		perc @ 5 1/2', bottom @ 13 1/2'					

REMARKS Holes dug on stake

SANITARIAN Rocio BACKHOE Huffield OTHERS _____

TEST HOLES USED IN SDA _____ AVG. PERC TIME _____ SQ.-FT/BR _____

TRENCH WIDTH _____ INLET DEPTH _____ MAX. BOT DEPTH _____ EFFECTIVE SW _____

2005

2005

2005

