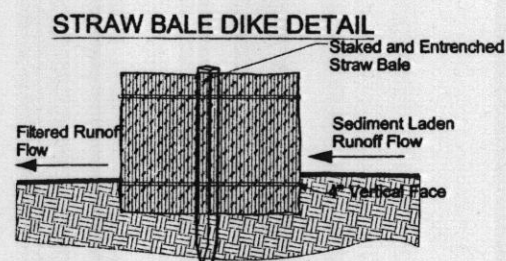
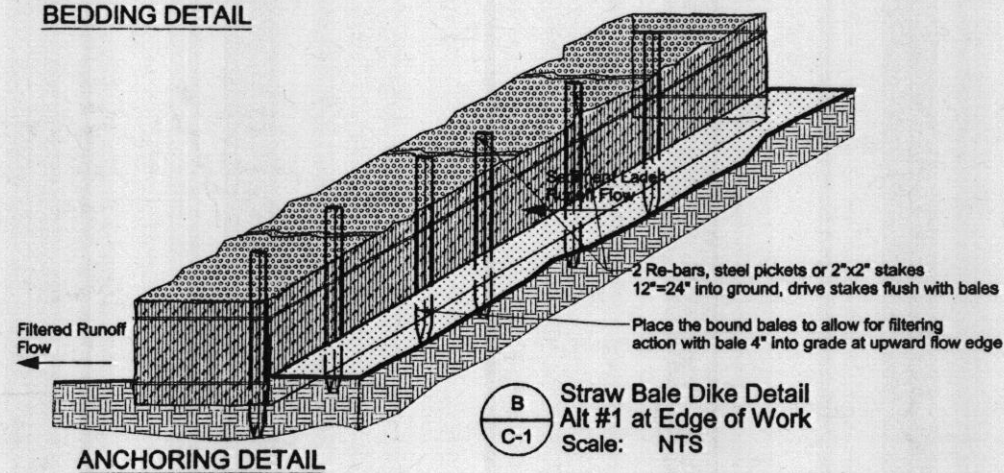


A
C-1
Silt Fence Detail (SF)
at Edge of Work
Scale: NTS



BEDDING DETAIL



B
C-1
Straw Bale Dike Detail
Alt #1 at Edge of Work
Scale: NTS

CONSTRUCTION NOTES FOR FABRICATED SILT FENCE

1. Woven wire fence to be fastened securely to fence posts with wire ties or staples.
 2. Filter cloth to be fastened securely to woven wire fence with ties spaced every 24" at top and mid section.
 3. When two sections of filter cloth adjoin each other they shall be overlapped by six inches and folded.
 4. Maintenance shall be performed as needed and material removed when "bulges" develop in the silt fence.
- POSTS:
Steel either T or U exterior posts or 2" hardwood posts
- FENCE:
Woven wire, 14 Gauge min 6" maximum mesh opening.
- FILTER CLOTH:
Filter X Mirafit 100X Stablina T140N or approved equal.
- PREFABRICATED UNIT:
Geofab, Envirofence, or as allowable by local jurisdiction.

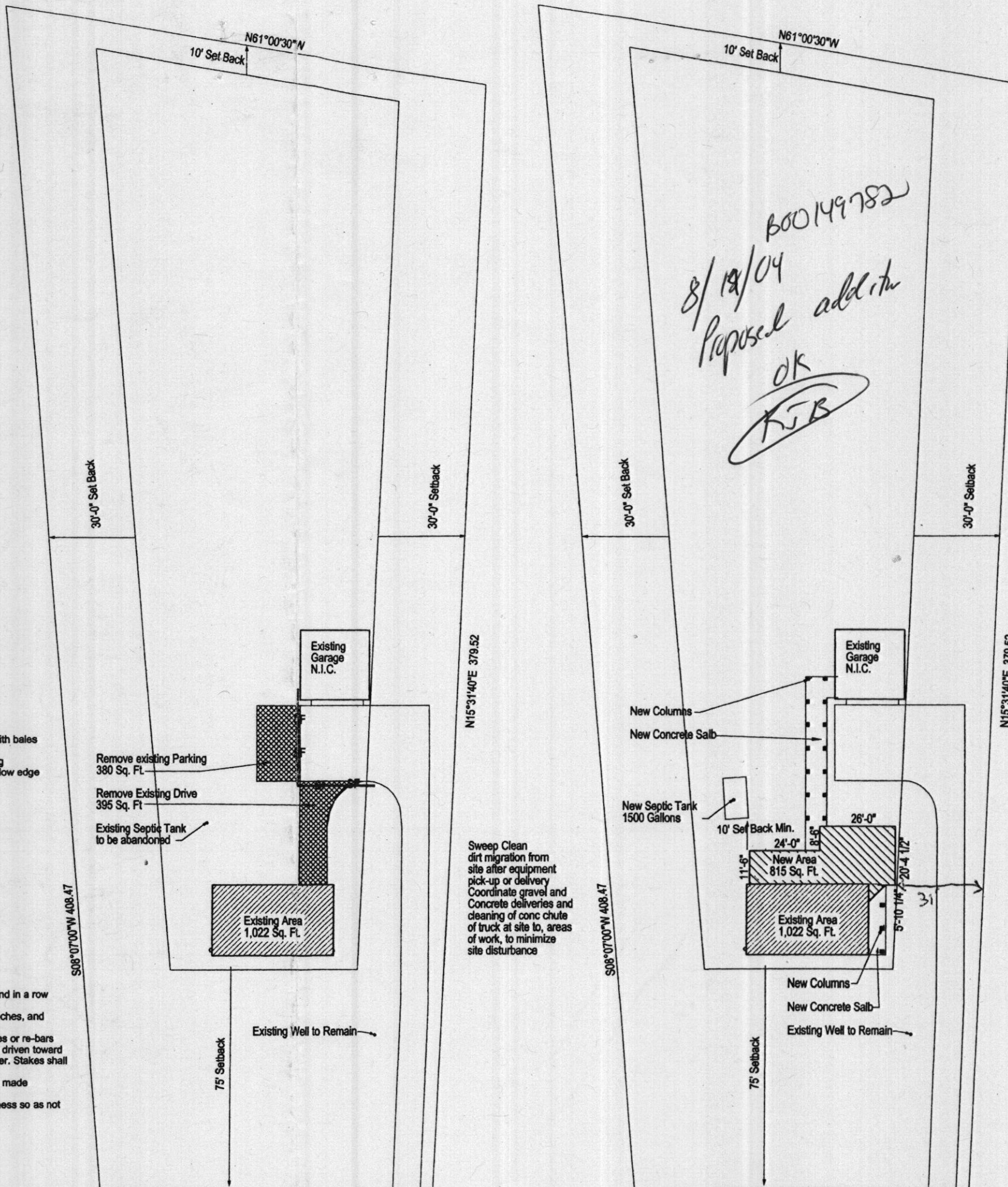
STRAW BALE DIKE DETAIL

CONSTRUCTION SPECIFICATIONS

1. Bales shall be placed at the toe of slope or on the contour and in a row with ends tightly abutting the adjacent bales.
2. Each bale shall be embedded in the soil a minimum of (4) inches, and placed so the bindings are horizontal
3. Bales shall be securely anchored in place by either two stakes or re-bars driven through the bale. The first stake in each bale shall be driven toward the previously laid bale at an angle to force the bales together. Stakes shall be driven flush with the bale.
4. Inspection shall be frequent and repair replacement shall be made promptly as needed.
5. Bales shall be removed when they have served their usefulness so as not to block or impede storm flow or drainage.

No Existing Vegetation to be disturbed

DETAILS SHOWN ARE FOR RUNOFF CONTROL (CONTRACTOR MAY CHOOSE ALTERNATE AND MODIFY AS PER LOCAL REQUIREMENTS OR UTILIZE ALTERNATE PRODUCTS)



Sweep Clean dirt migration from site after equipment pick-up or delivery Coordinate gravel and Concrete deliveries and cleaning of conc chute of truck at site to, areas of work, to minimize site disturbance

1"=40'