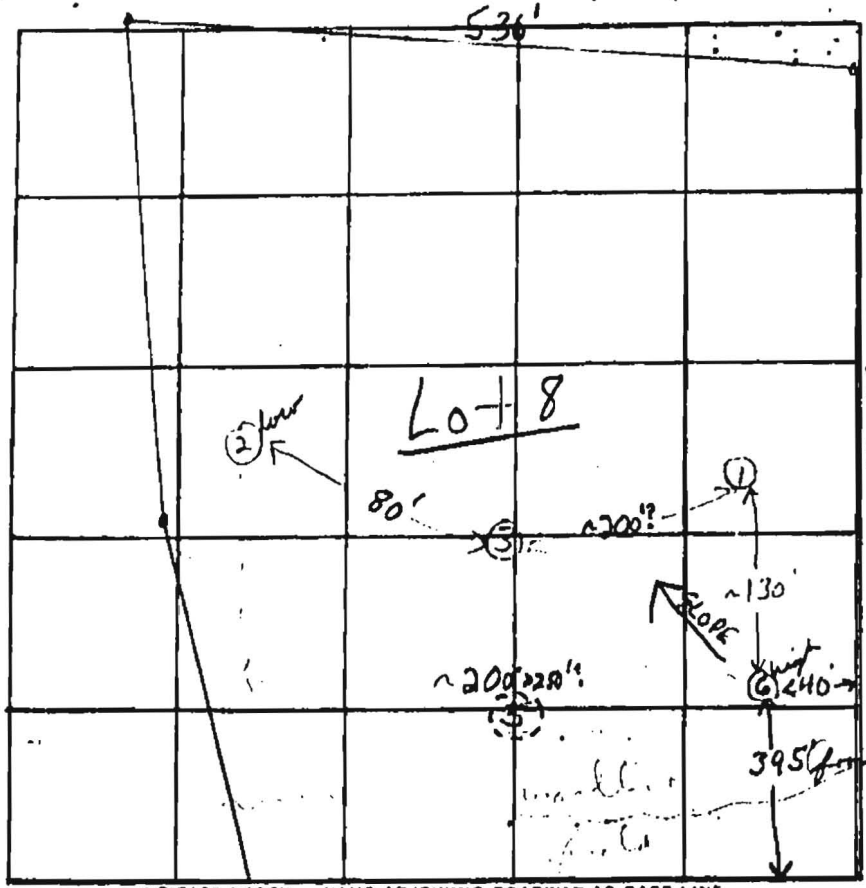


22403



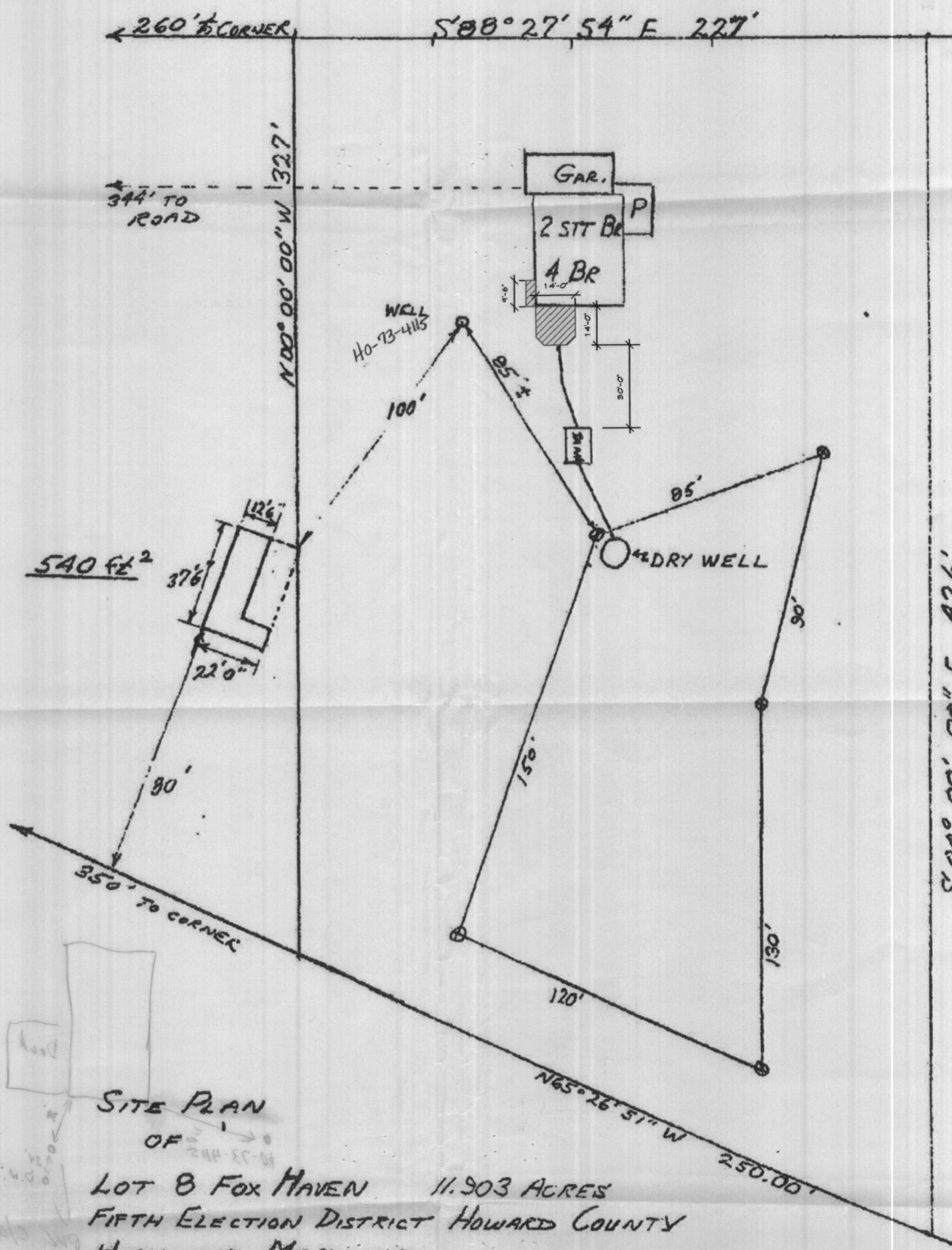
INDICATE NORTH - NAME ADJOINING ROADWAY AS BASE LINE

R/W

DATE	TEST NO.	DEPTH	PRE-WET		TEST - 1" DROP		TIME	
			START	STOP	START	STOP		
6/5/75	1	4 1/2'	1:02	1:03	1:03	1:05	2 min	
	1A	12'	1:03	1:07	1:07	1:12	5 min	
	2	5 1/2'	1:13	—	—	1:20	7 min	
	2A	13'	1:13	—	—	1:21	8 min	
	3	12'	Visibly ch. to 4' salty / muddy					is a hole
	5	?	hole dug but covered up					
	(4) lot 9 sheet from 6/14/75	6 (H) 5'					12 min	
		6A(4A) 12'					13 min	

135# / B.P.
inlet 4 1/2'

REMARKS 6/5/75 Cartily all holes intended lot
 TYPE OF SOIL missile brown below type 3.0 clay, soil
 TESTED BY F.S. ALSO PRESENT: Eyrach & Co.



SITE PLAN
 OF 244-55-01

LOT 8 FOX HAVEN 11.903 ACRES
 FIFTH ELECTION DISTRICT HOWARD COUNTY
 HIGHLAND MARYLAND

TAKEN FROM SITE PLAN DONE BY
 LOGAN R. JENNINGS P.E. # 8107
 1/13/75 REV 1/19/76

⊗ DENOTES PERCOLATION
 TEST HOLES
 1 IN = 30 FT

RECEIVED
 APR 10 1975

30

30

30