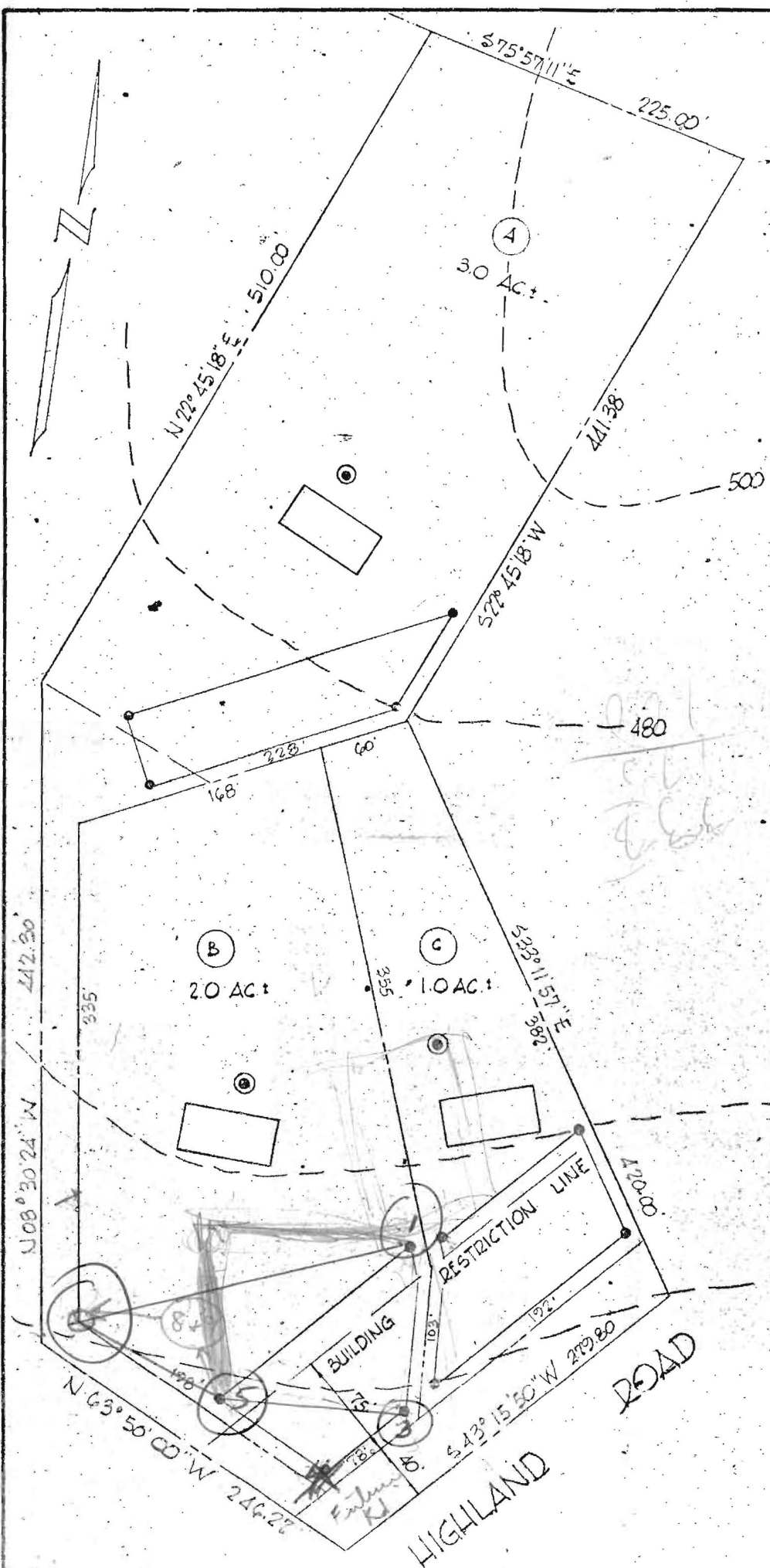


4/18/73

Either write spec.
& hold approval or
wait for plates before
writing up.

4/19/73 Wait for plat. C.B.D.



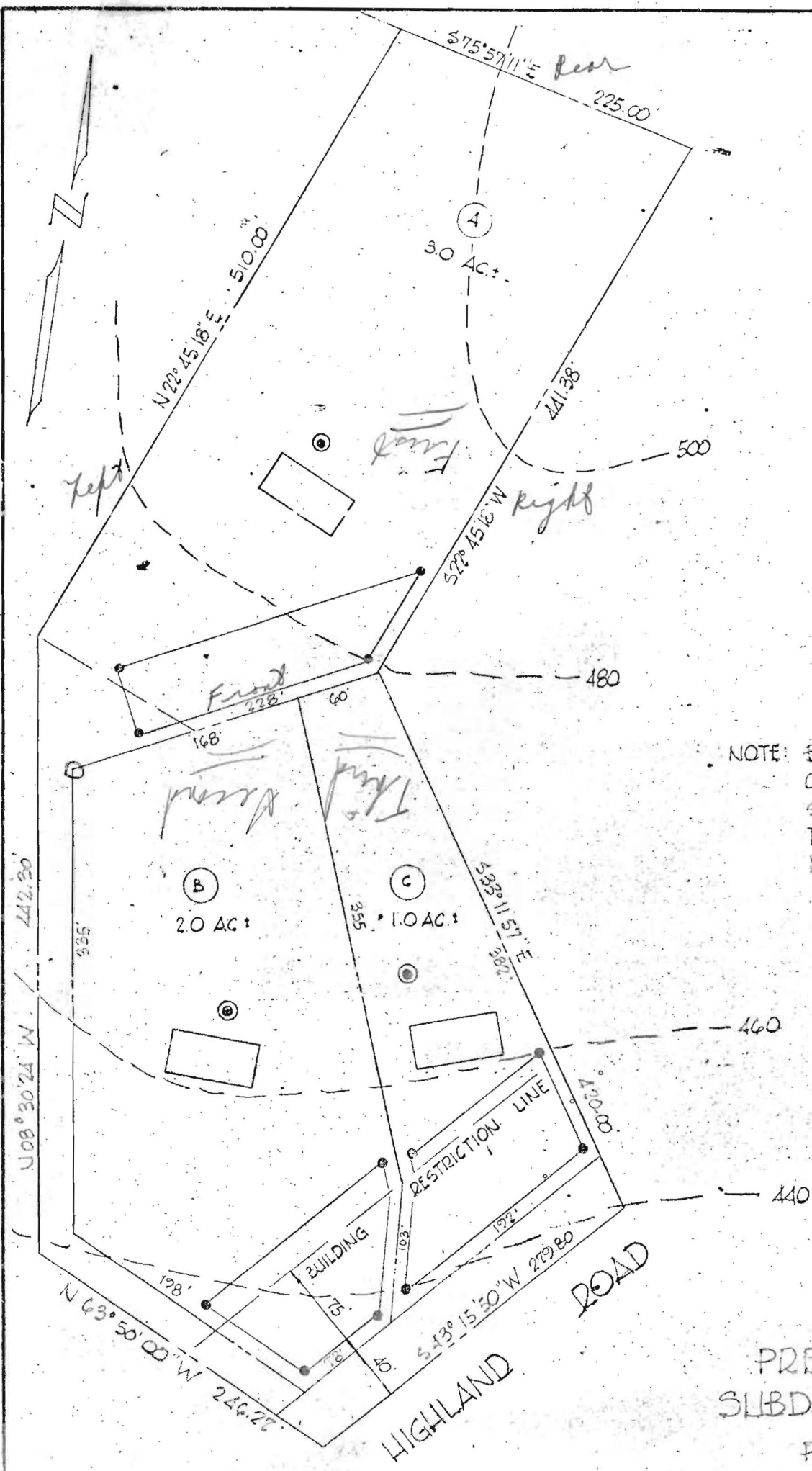
NOTE: BOUNDARY FROM SURVEY
 OF 8-17-72 BY CLAUDE M.
 SKINNER JR.
 TOPO FROM USGS MAP
 NO. SLOPES OVER 25%

PRELIMINARY
 SUBDIVISION PLAT

PREPARED FOR
 WILLIAM L. SWANN
 5TH ELECT. DIST. - HOWARD CO., MD

2-23-73 SCALE 1" = 100'

PURDUM & JESCHKE
 ENGINEERS & SURVEYORS
 1023 N CALVERT STREET
 BALTIMORE, MARYLAND



NOTE: BOUNDARY FROM SURVEY OF 8-17-72 BY CLAUDE M. SKINNER JR. TOPO FROM USGS MAP NO. SLOPES OVER 25%

PRELIMINARY SUBDIVISION PLAT

PREPARED FOR WILLIAM L. SWANN 5TH ELECT. DIST. HOWARD CO., MD

2-23-73 SCALE 1" = 100'

PURDUM & JESCHKE ENGINEERS & SURVEYORS 1023 N CALVERT STREET BALTIMORE, MARYLAND