

AVP 5173

Brown L
 Orange/Brown
 Sel w/ 25% coarse chd from
 Red/Brown
 SL
 Yellow/Brown
 SL w/ trace Red

1'
 3 1/2'
 7 1/2'
 12'

5174

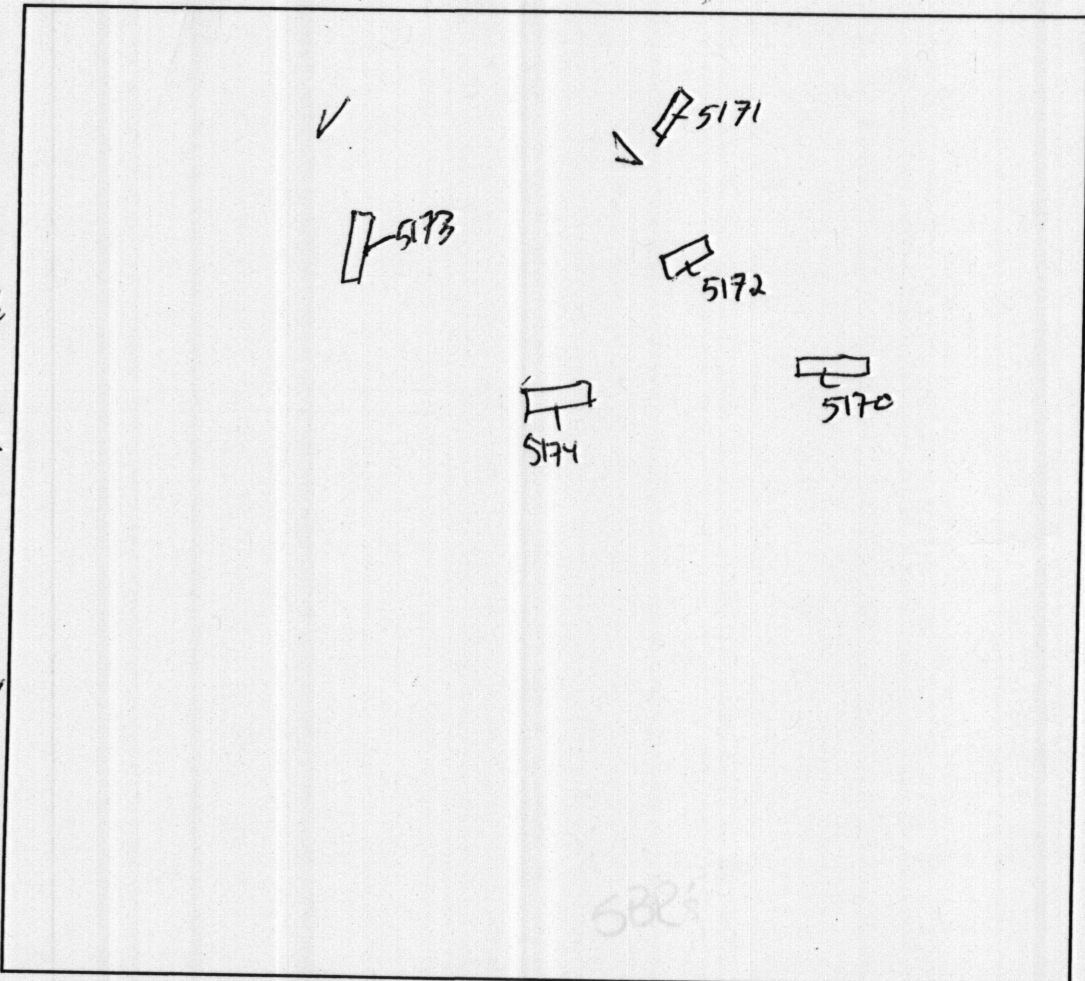
Brown L
 Brown/Orange
 Sel
 Brown/Yellow
 Red
 SL
 Yellow/Brown
 SL
 w/ trace Red

1 1/2'
 4'
 8'
 12'

5172

Brown L
 Orange/Brown
 Sel
 Yellow/Brown
 SL
 Yellow/Brown
 S
 w/ trace Red

1/2'
 4'
 12'



5171
 Brown L
 Orange/Brown
 Sel
 Yellow/Brown
 SL
 Orange/Brown
 S
 w/ trace Red

5170
 Brown L
 Red/Brown
 heavy
 Sel
 Orange/Brown
 Red
 SL
 Yellow/Brown
 SL
 w/ trace Red

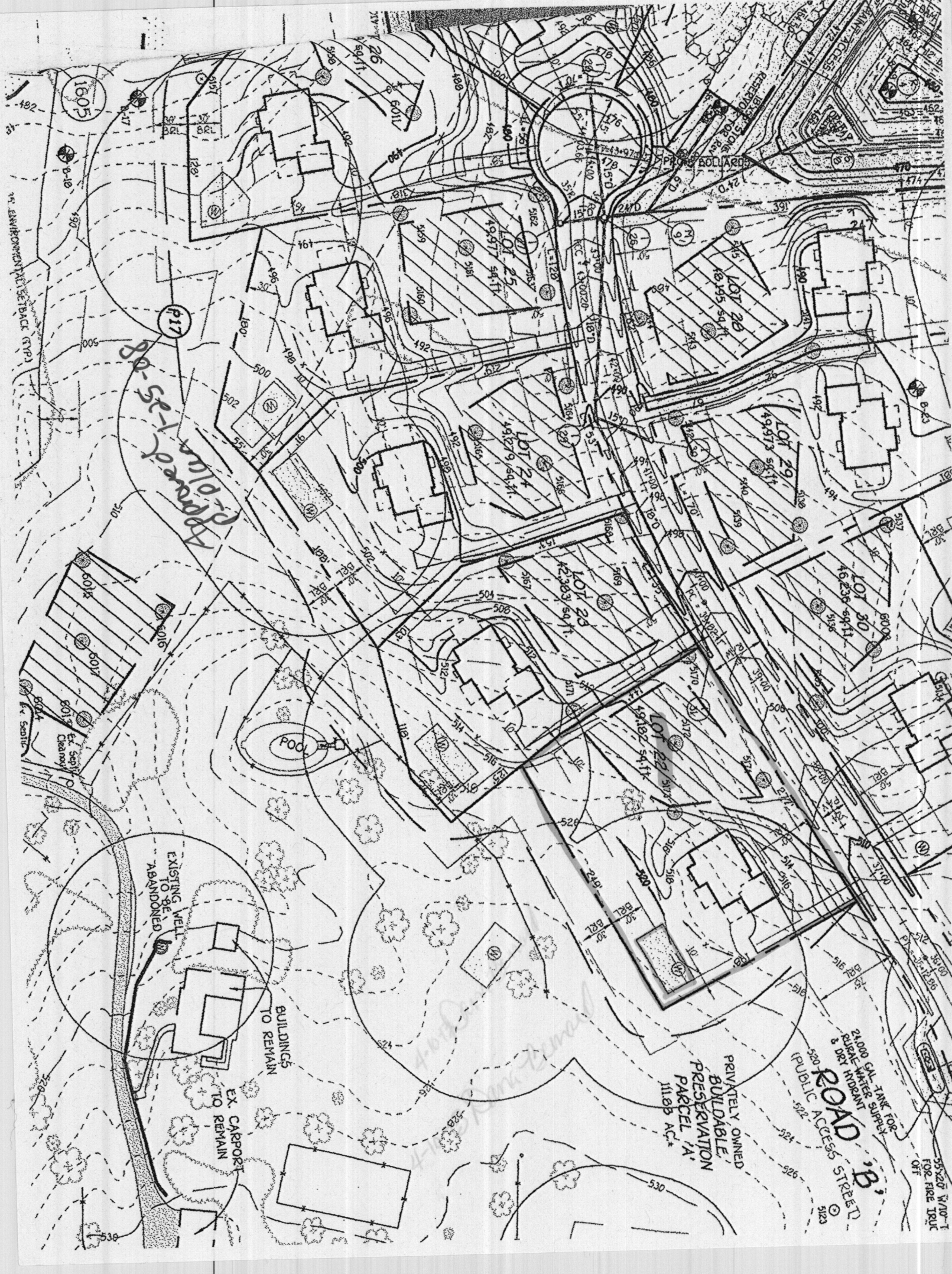
DATE	TEST #	DEPTH	START	BREAK 1" DROP	STOP 2" DROP	TIME OF 2nd INCH	P/F/H
9/15/05	5173	4' / 12'	10:08	10:09	10:11	2nu	P
	5174	4 1/2' / 12'	10:13	10:16	10:24	8mir	P
	5172	4' / 12'	10:16	10:20	10:28	8mis	P
	5171	5' / 10'	10:27	10:30	10:34	4mis	P
	5170	4' / 11'	10:34	10:36	10:38	2mir	P
			10:37				

REMARKS lot 73 5170 shared w/ lot 22

SANITARIAN _____ BACKHOE _____ OTHERS _____

TEST HOLES USED IN SDA _____ AVG. PERC TIME _____ SQ. FT/BR _____

TRENCH WIDTH _____ INLET DEPTH _____ MAX. BOT DEPTH _____ EFFECTIVE S/W _____



Private 1-25-88

EXISTING WELL
TO BE
ABANDONED

BUILDINGS
TO REMAIN

EX. CARPORT
TO REMAIN

PRIVATELY OWNED
BUILDABLE
PRESERVATION
PARCEL 1A
111.88 AC.

ROAD B
(PUBLIC ACCESS STREET)

21,000 GAL. TANK FOR
PURE WATER SUPPLY
& DRY HYDRANT

55x20' W/OT
FOR FIRE DEPT
OFF

1/4" ENVIRONMENTAL SETBACK (17P)

530

1605

P17

POOL

125

191

500

502

501

501

501

501

501

501

501

501

125

191

500

502

501

501

501

501

501

501

501

501

125

191

500

502

501

501

501

501

501

501

501

501

125

191

500

502

501

501

501

501

501

501

501

501

125

191

500

502

501

501

501

501

501

501

501

501

125

191

500

502

501

501

501

501

501

501

501

501

125

191

500

502

501

501

501

501

501

501

501

501

125

191

500

502

501

501

501

501

501

501

501

501

125

191

500

502

501

501

501

501

501

501

501

501

125

191

500

502

501

501

501

501

501

501

501

501

125

191

500

502

501

501

501

501

501

501

501

501

125

191

500

502

501

501

501

501

501

501

501

501

125

191

500

502

501

501

501

501

501

501

501

501

125

191

500

502

501

501

501

501

501

501

501

501

125

191

500

502

501

501

501

501

501

501

501

501

125

191

500

502

501

501

501

501

501

501

501

501

125

191

500

502

501

501

501

501

501

501

501

501

125

191

500

502

501

501

501

501

501

501

501

501

125

191

500

502

501

501

501

501

501

501

501

501

125

191

500

502

501

501

501

501

501

501

501

501

125

191

500

502

501

501

501

501

501

501

501

501

125

191

500

502

501

501

501

501

501

501

501

501

125

191

500

502

501

501

501

501

501

501

501

501

125

191

500

502

501

501

501

501

501

501

501

501

125

191

500

502

501

501

501

501

501

501

501

501

125

191

500

502

501

501

501

501

501

501

501

501

125

191