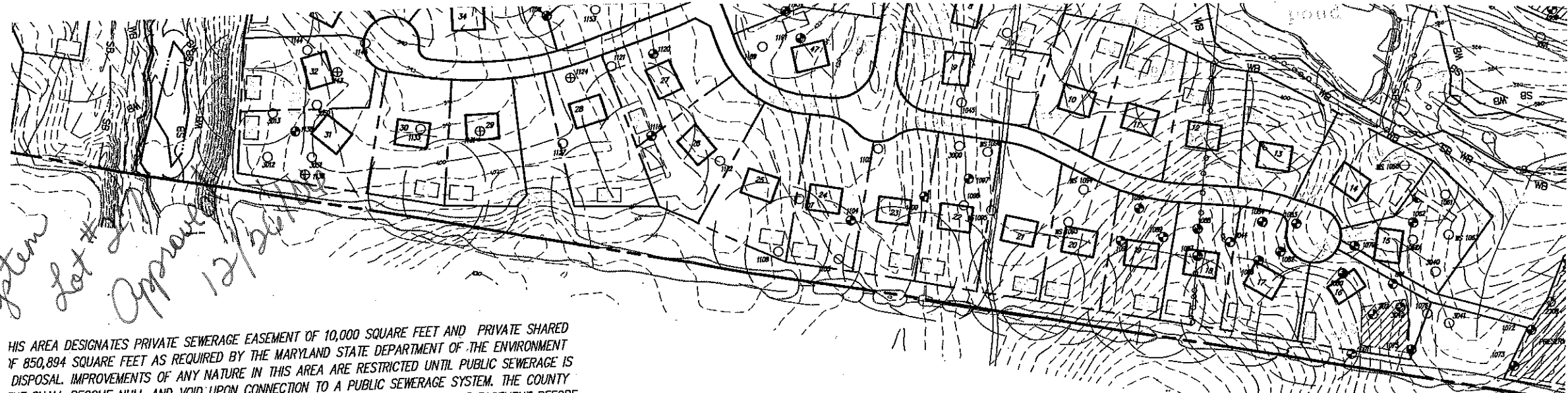


Per Cent. Shared for Sewer System Lot # Approved 12/20/04



THIS AREA DESIGNATES PRIVATE SEWERAGE EASEMENT OF 10,000 SQUARE FEET AND PRIVATE SHARED SEWERAGE DISPOSAL OF 850,894 SQUARE FEET AS REQUIRED BY THE MARYLAND STATE DEPARTMENT OF THE ENVIRONMENT. DISPOSAL IMPROVEMENTS OF ANY NATURE IN THIS AREA ARE RESTRICTED UNTIL PUBLIC SEWERAGE IS AVAILABLE. THE COUNTY SHALL BECOME NULL AND VOID UPON CONNECTION TO A PUBLIC SEWERAGE SYSTEM. THE COUNTY ENGINEERS HAVE THE AUTHORITY TO GRANT ADJUSTMENTS TO THE PRIVATE SHARED SEWERAGE EASEMENT BEFORE RECORDATION OF A MODIFIED SEWERAGE EASEMENT SHALL BE NECESSARY. THE DEVELOPER SHALL COMPLY WITH THE MINIMUM LOT WIDTH AND LOT AREA AS REQUIRED BY THE MARYLAND STATE DEPARTMENT OF THE ENVIRONMENT.

AND/OR SEWERAGE EASEMENTS WITHIN 100 FEET OF THE PROPERTY HAVE BEEN SHOWN FROM THE BEST AVAILABLE RECORDS. ANY ADDITIONAL SEWERAGE EASEMENTS WITHIN 100 FEET OF THE PROPERTY HAVE BEEN SHOWN FROM THE BEST AVAILABLE RECORDS. IT IS THE DEVELOPER RESPONSIBILITY TO SCHEDULE THE WELL DRILLING PRIOR TO FINAL PLAT RECORDATION. IT IS THE DEVELOPER RESPONSIBILITY TO SCHEDULE THE WELL DRILLING PRIOR TO FINAL PLAT RECORDATION. IT WILL NOT BE CONSIDERED "GOVERNMENT DELAY" IF THE WELL DRILLING IS COMPLETED PRIOR TO THE FINAL PLAT SUBMISSION. IT WILL NOT BE CONSIDERED "GOVERNMENT DELAY" IF THE WELL DRILLING IS COMPLETED PRIOR TO THE FINAL PLAT SUBMISSION. IT WILL NOT BE CONSIDERED "GOVERNMENT DELAY" IF THE WELL DRILLING IS COMPLETED PRIOR TO THE FINAL PLAT SUBMISSION.

THE AERIAL TOPOGRAPHY PREPARED BY MCKENZIE SNYDER, INC. ON JANUARY 9, 2002. FIELD RUN BY GUTSCHICK, LITTLE & WEBER, P.A. IN JANUARY, 2004 IN THE AREAS OF THE SHARED SEWERAGE DISPOSAL AREA.

THE BOUNDARY SURVEY PERFORMED ON OR ABOUT MARCH, 2002 BY GUTSCHICK, LITTLE & WEBER, P.A.

THE DRIVEWAY IN THE SEWERAGE DISPOSAL AREA WILL BE REMOVED AND REGRADED WITH COMPACTIBLE FILL. THE SEWERAGE DISPOSAL AREAS WILL BE REMOVED, WELLS SEALED & ABANDONED PRIOR TO REMOVAL OF THE DRIVEWAY. THE SEWERAGE DISPOSAL AREAS WILL BE REMOVED, WELLS SEALED & ABANDONED PRIOR TO REMOVAL OF THE DRIVEWAY. THE SEWERAGE DISPOSAL AREAS WILL BE REMOVED, WELLS SEALED & ABANDONED PRIOR TO REMOVAL OF THE DRIVEWAY.

AN APPROPRIATION PERMIT SHALL BE OBTAINED PRIOR TO PLAT RECORDATION. THE SEWERAGE DISPOSAL AREAS WILL BE REMOVED, WELLS SEALED & ABANDONED PRIOR TO REMOVAL OF THE DRIVEWAY. THE SEWERAGE DISPOSAL AREAS WILL BE REMOVED, WELLS SEALED & ABANDONED PRIOR TO REMOVAL OF THE DRIVEWAY.

SOIL TYPES -

- CgB2 - CHESTER GRAVELLY SILT LOAM, 3 TO 8 PERCENT SLOPES, MODERATELY ERODED
- CgC2 - CHESTER GRAVELLY SILT LOAM, 8 TO 15 PERCENT SLOPES, MODERATELY ERODED
- ChA - CHESTER SILT LOAM, 0 TO 3 PERCENT SLOPES
- ChB2 - CHESTER SILT LOAM, 3 TO 8 PERCENT SLOPES, MODERATELY ERODED
- ChC2 - CHESTER SILT LOAM, 8 TO 15 PERCENT SLOPES, MODERATELY ERODED
- ChD2 - CHESTER SILT LOAM, 15 TO 25 PERCENT SLOPES, MODERATELY ERODED
- Cs - COMUS SILT LOAM
- EKA - ELIOAK SILT LOAM, 0 TO 3 PERCENT SLOPES
- EkB2 - ELIOAK SILT LOAM, 3 TO 8 PERCENT SLOPES, MODERATELY ERODED
- EkC2 - ELIOAK SILT LOAM, 8 TO 15 PERCENT SLOPES, MODERATELY ERODED
- GIA - GLENELG LOAM, 0 TO 3 PERCENT SLOPES
- GIB2 - GLENELG LOAM, 3 TO 8 PERCENT SLOPES, MODERATELY ERODED
- GIC2 - GLENELG LOAM, 8 TO 15 PERCENT SLOPES, MODERATELY ERODED
- GnA - GLENVILLE SILT LOAM, 0 TO 3 PERCENT SLOPES
- GnB2 - GLENVILLE SILT LOAM, 3 TO 8 PERCENT SLOPES, MODERATELY ERODED
- GnC2 - GLENVILLE SILT LOAM, 8 TO 15 PERCENT SLOPES, MODERATELY ERODED
- Ho - HATBORO SILT LOAM
- MgB2 - MANOR GRAVELLY LOAM, 3 TO 8 PERCENT SLOPES, MODERATELY ERODED
- MgC2 - MANOR GRAVELLY LOAM, 8 TO 15 PERCENT SLOPES, MODERATELY ERODED
- MIA - MANOR LOAM, 0 TO 3 PERCENT SLOPES
- MIB2 - MANOR LOAM, 3 TO 8 PERCENT SLOPES, MODERATELY ERODED
- MID2 - MANOR LOAM, 15 TO 25 PERCENT SLOPES, MODERATELY ERODED
- MID3 - MANOR LOAM, 15 TO 25 PERCENT SLOPES, SEVERELY ERODED
- MIE - MANOR LOAM, 25 TO 45 PERCENT SLOPES
- MnD - MANOR VERY STONY LOAM, 3 TO 25 PERCENT SLOPES
- MnF - MANOR VERY STONY LOAM, 25 TO 60 PERCENT SLOPES

REVISION		PWC
REVISION		PWC
REVISION	4/6/04	PWC
REVISION	ADD HOLES AND REV SEPTIC AREAS	PWC
REVISION	ADD SEPTIC WELLS, ETC	PWC
REVISION	ADD UNDRILLED HOLES	PWC
REVISION	ADD TEST, FAILED TEST, ETC	PWC
REVISION	ADD 11001, 11003, 11005, 11006, 11008, 11009, 11010, 11011, 11012, 11013, 11014, 11015, 11016, 11017, 11018, 11019, 11020, 11021, 11022, 11023, 11024, 11025, 11026, 11027, 11028, 11029, 11030, 11031, 11032, 11033, 11034, 11035, 11036, 11037, 11038, 11039, 11040, 11041, 11042, 11043, 11044, 11045, 11046, 11047, 11048, 11049, 11050, 11051, 11052, 11053, 11054, 11055, 11056, 11057, 11058, 11059, 11060, 11061, 11062, 11063, 11064, 11065, 11066, 11067, 11068, 11069, 11070, 11071, 11072, 11073, 11074, 11075, 11076, 11077, 11078, 11079, 11080, 11081, 11082, 11083, 11084, 11085, 11086, 11087, 11088, 11089, 11090, 11091, 11092, 11093, 11094, 11095, 11096, 11097, 11098, 11099, 11100, 11101, 11102, 11103, 11104, 11105, 11106, 11107, 11108, 11109, 11110, 11111, 11112, 11113, 11114, 11115, 11116, 11117, 11118, 11119, 11120, 11121, 11122, 11123, 11124, 11125, 11126, 11127, 11128, 11129, 11130, 11131, 11132, 11133, 11134, 11135, 11136, 11137, 11138, 11139, 11140, 11141, 11142, 11143, 11144, 11145, 11146, 11147, 11148, 11149, 11150, 11151, 11152, 11153, 11154, 11155, 11156, 11157, 11158, 11159, 11160, 11161, 11162, 11163, 11164, 11165, 11166, 11167, 11168, 11169, 11170, 11171, 11172, 11173, 11174, 11175, 11176, 11177, 11178, 11179, 11180, 11181, 11182, 11183, 11184, 11185, 11186, 11187, 11188, 11189, 11190, 11191, 11192, 11193, 11194, 11195, 11196, 11197, 11198, 11199, 11200, 11201, 11202, 11203, 11204, 11205, 11206, 11207, 11208, 11209, 11210, 11211, 11212, 11213, 11214, 11215, 11216, 11217, 11218, 11219, 11220, 11221, 11222, 11223, 11224, 11225, 11226, 11227, 11228, 11229, 11230, 11231, 11232, 11233, 11234, 11235, 11236, 11237, 11238, 11239, 11240, 11241, 11242, 11243, 11244, 11245, 11246, 11247, 11248, 11249, 11250, 11251, 11252, 11253, 11254, 11255, 11256, 11257, 11258, 11259, 11260, 11261, 11262, 11263, 11264, 11265, 11266, 11267, 11268, 11269, 11270, 11271, 11272, 11273, 11274, 11275, 11276, 11277, 11278, 11279, 11280, 11281, 11282, 11283, 11284, 11285, 11286, 11287, 11288, 11289, 11290, 11291, 11292, 11293, 11294, 11295, 11296, 11297, 11298, 11299, 11300, 11301, 11302, 11303, 11304, 11305, 11306, 11307, 11308, 11309, 11310, 11311, 11312, 11313, 11314, 11315, 11316, 11317, 11318, 11319, 11320, 11321, 11322, 11323, 11324, 11325, 11326, 11327, 11328, 11329, 11330, 11331, 11332, 11333, 11334, 11335, 11336, 11337, 11338, 11339, 11340, 11341, 11342, 11343, 11344, 11345, 11346, 11347, 11348, 11349, 11350, 11351, 11352, 11353, 11354, 11355, 11356, 11357, 11358, 11359, 11360, 11361, 11362, 11363, 11364, 11365, 11366, 11367, 11368, 11369, 11370, 11371, 11372, 11373, 11374, 11375, 11376, 11377, 11378, 11379, 11380, 11381, 11382, 11383, 11384, 11385, 11386, 11387, 11388, 11389, 11390, 11391, 11392, 11393, 11394, 11395, 11396, 11397, 11398, 11399, 11400, 11401, 11402, 11403, 11404, 11405, 11406, 11407, 11408, 11409, 11410, 11411, 11412, 11413, 11414, 11415, 11416, 11417, 11418, 11419, 11420, 11421, 11422, 11423, 11424, 11425, 11426, 11427, 11428, 11429, 11430, 11431, 11432, 11433, 11434, 11435, 11436, 11437, 11438, 11439, 11440, 11441, 11442, 11443, 11444, 11445, 11446, 11447, 11448, 11449, 11450, 11451, 11452, 11453, 11454, 11455, 11456, 11457, 11458, 11459, 11460, 11461, 11462, 11463, 11464, 11465, 11466, 11467, 11468, 11469, 11470, 11471, 11472, 11473, 11474, 11475, 11476, 11477, 11478, 11479, 11480, 11481, 11482, 11483, 11484, 11485, 11486, 11487, 11488, 11489, 11490, 11491, 11492, 11493, 11494, 11495, 11496, 11497, 11498, 11499, 11500, 11501, 11502, 11503, 11504, 11505, 11506, 11507, 11508, 11509, 11510, 11511, 11512, 11513, 11514, 11515, 11516, 11517, 11518, 11519, 11520, 11521, 11522, 11523, 11524, 11525, 11526, 11527, 11528, 11529, 11530, 11531, 11532, 11533, 11534, 11535, 11536, 11537, 11538, 11539, 11540, 11541, 11542, 11543, 11544, 11545, 11546, 11547, 11548, 11549, 11550, 11551, 11552, 11553, 11554, 11555, 11556, 11557, 11558, 11559, 11560, 11561, 11562, 11563, 11564, 11565, 11566, 11567, 11568, 11569, 11570, 11571, 11572, 11573, 11574, 11575, 11576, 11577, 11578, 11579, 11580, 11581, 11582, 11583, 11584, 11585, 11586, 11587, 11588, 11589, 11590, 11591, 11592, 11593, 11594, 11595, 11596, 11597, 11598, 11599, 11600, 11601, 11602, 11603, 11604, 11605, 11606, 11607, 11608, 11609, 11610, 11611, 11612, 11613, 11614, 11615, 11616, 11617, 11618, 11619, 11620, 11621, 11622, 11623, 11624, 11625, 11626, 11627, 11628, 11629, 11630, 11631, 11632, 11633, 11634, 11635, 11636, 11637, 11638, 11639, 11640, 11641, 11642, 11643, 11644, 11645, 11646, 11647, 11648, 11649, 11650, 11651, 11652, 11653, 11654, 11655, 11656, 11657, 11658, 11659, 11660, 11661, 11662, 11663, 11664, 11665, 11666, 11667, 11668, 11669, 11670, 11671, 11672, 11673, 11674, 11675, 11676, 11677, 11678, 11679, 11680, 11681, 11682, 11683, 11684, 11685, 11686, 11687, 11688, 11689, 11690, 11691, 11692, 11693, 11694, 11695, 11696, 11697, 11698, 11699, 11700, 11701, 11702, 11703, 11704, 11705, 11706, 11707, 11708, 11709, 11710, 11711, 11712, 11713, 11714, 11715, 11716, 11717, 11718, 11719, 11720, 11721, 11722, 11723, 11724, 11725, 11726, 11727, 11728, 11729, 11730, 11731, 11732, 11733, 11734, 11735, 11736, 11737, 11738, 11739, 11740, 11741, 11742, 11743, 11744, 11745, 11746, 11747, 11748, 11749, 11750, 11751, 11752, 11753, 11754, 11755, 11756, 11757, 11758, 11759, 11760, 11761, 11762, 11763, 11764, 11765, 11766, 11767, 11768, 11769, 11770, 11771, 11772, 11773, 11774, 11775, 11776, 11777, 11778, 11779, 11780, 11781, 11782, 11783, 11784, 11785, 11786, 11787, 11788, 11789, 11790, 11791, 11792, 11793, 11794, 11795, 11796, 11797, 11798, 11799, 11800, 11801, 11802, 11803, 11804, 11805, 11806, 11807, 11808, 11809, 11810, 11811, 11812, 11813, 11814, 11815, 11816, 11817, 11818, 11819, 11820, 11821, 11822, 11823, 11824, 11825, 11826, 11827, 11828, 11829, 11830, 11831, 11832, 11833, 11834, 11835, 11836, 11837, 11838, 11839, 11840, 11841, 11842, 11843, 11844, 11845, 11846, 11847, 11848, 11849, 11850, 11851, 11852, 11853, 11854, 11855, 11856, 11857, 11858, 11859, 11860, 11861, 11862, 11863, 11864, 11865, 11866, 11867, 11868, 11869, 11870, 11871, 11872, 11873, 11874, 11875, 11876, 11877, 11878, 11879, 11880, 11881, 11882, 11883, 11884, 11885, 11886, 11887, 11888, 11889, 11890, 11891, 11892, 11893, 11894, 11895, 11896, 11897, 11898, 11899, 11900, 11901, 11902, 11903, 11904, 11905, 11906, 11907, 11908, 11909, 11910, 11911, 11912, 11913, 11914, 11915, 11916, 11917, 11918, 11919, 11920, 11921, 11922, 11923, 11924, 11925, 11926, 11927, 11928, 11929, 11930, 11931, 11932, 11933, 11934, 11935, 11936, 11937, 11938, 11939, 11940, 11941, 11942, 11943, 11944, 11945, 11946, 11947, 11948, 11949, 11950, 11951, 11952, 11953, 11954, 11955, 11956, 11957, 11958, 11959, 11960, 11961, 11962, 11963, 11964, 11965, 11966, 11967, 11968, 11969, 11970, 11971, 11972, 11973, 11974, 11975, 11976, 11977, 11978, 11979, 11980, 11981, 11982, 11983, 11984, 11985, 11986, 11987, 11988, 11989, 11990, 11991, 11992, 11993, 11994, 11995, 11996, 11997, 11998, 11999, 12000, 12001, 12002, 12003, 12004, 12005, 12006, 12007, 12008, 12009, 12010, 12011, 12012, 12013, 12014, 12015, 12016, 12017, 12018, 12019, 12020, 12021, 12022, 12023, 12024, 12025, 12026, 12027, 12028, 12029, 12030, 12031, 12032, 12033, 12034, 12035, 12036, 12037, 12038, 12039, 12040, 12041, 12042, 12043, 12044, 12045, 12046, 12047, 12048, 12049, 12050, 12051, 12052, 12053, 12054, 12055, 12056, 12057, 12058, 12059, 12060, 12061, 12062, 12063, 12064, 12065, 12066, 12067, 12068, 12069, 12070, 12071, 12072, 12073, 12074, 12075, 12076, 12077, 12078, 12079, 12080, 12081, 12082, 12083, 12084, 12085, 12086, 12087, 12088, 12089, 12090, 12091, 12092, 12093, 12094, 12095, 12096, 12097, 12098, 12099, 12100, 12101, 12102, 12103, 12104, 12105, 12106, 12107, 12108, 12109, 12110, 12111, 12112, 12113, 12114, 12115, 12116, 12117, 12118, 12119, 12120, 12121, 12122, 12123, 12124, 12125, 12126, 12127, 12128, 12129, 12130, 12131, 12132, 12133, 12134, 12135, 12136, 12137, 12138, 12139, 12140, 12141, 12142, 12143, 12144, 12145, 12146, 12147, 12148, 12149, 12150, 12151, 12152, 12153, 12154, 12155, 12156, 12157, 12158, 12159, 12160, 12161, 12162, 12163, 12164, 12165, 12166, 12167, 12168, 12169, 12170, 12171, 12172, 12173, 12174, 12175, 12176, 12177, 12178, 12179, 12180, 12181, 12182, 12183, 12184, 12185, 12186, 12187, 12188, 12189, 12190, 12191, 12192, 12193, 12194, 12195, 12196, 12197, 12198, 12199, 12200, 12201, 12202, 12203, 12204, 12205, 12206, 12207, 12208, 12209, 12210, 12211, 12212, 12213, 12214, 12215, 12216, 12217, 12218, 12219, 12220, 12221, 12222, 12223, 12224, 12225, 12226, 12227, 12228, 12229, 12230, 12231, 12232, 12233, 12234, 12235, 12236, 12237, 12238, 12239, 12240, 12241, 12242, 12243, 12244, 12245, 12246, 12247, 12248, 12249, 12250, 12251, 12252, 12253, 12254, 12255, 12256, 12257, 12258, 12259, 12260, 12261, 12262, 12263, 12264, 12265, 12266, 12267, 12268, 12269, 12270, 12271, 12272, 12273, 12274, 12275, 12276, 12277, 12278, 12279, 12280, 12281, 12282, 12283, 12284, 12285, 12286, 12287, 12288, 12289, 12290, 12291, 12292, 12293, 12294, 12295, 12296, 12297, 12298, 12299, 12300, 12301, 12302, 12303, 12304, 12305, 12306, 12307, 12308, 12309, 12310, 12311, 12312, 12313, 12314, 12315, 12316, 12317, 12318, 12319, 12320, 12321, 12322, 12323, 12324, 12325, 12326, 12327, 12328, 12329, 12330, 12331, 12332, 12333, 12334, 12335, 12336, 12337, 12338, 12339, 12340, 12341, 12342, 12343, 12344, 12345, 12346, 12347, 12348, 12349, 12350, 12351, 12352, 12353, 12354, 12355, 12356, 12357, 12358, 12359, 12360, 12361, 12362, 12363, 12364, 12365, 12366, 12367, 12368, 12369, 12370, 12371, 12372, 12373, 12374, 12375, 12376, 12377, 12378, 12379, 12380, 12381, 12382, 12383, 12384, 12385, 12386, 12387, 12388, 12389, 12390, 12391, 12392, 12393, 12394, 12395, 12396, 12397, 12398, 12399, 12400, 12401, 12402, 12403, 12404, 12405, 12406, 12407, 12408, 12409, 12410, 12411, 12412, 12413, 12414, 12415, 12416, 12417, 12418, 12419, 12420, 12421, 12422, 12423, 12424, 12425, 12426, 12427, 12428, 12429, 12430, 12431, 12432, 12433, 12434, 12435, 12436, 12437, 12438, 12439, 12440, 12441, 12442, 12443, 1	