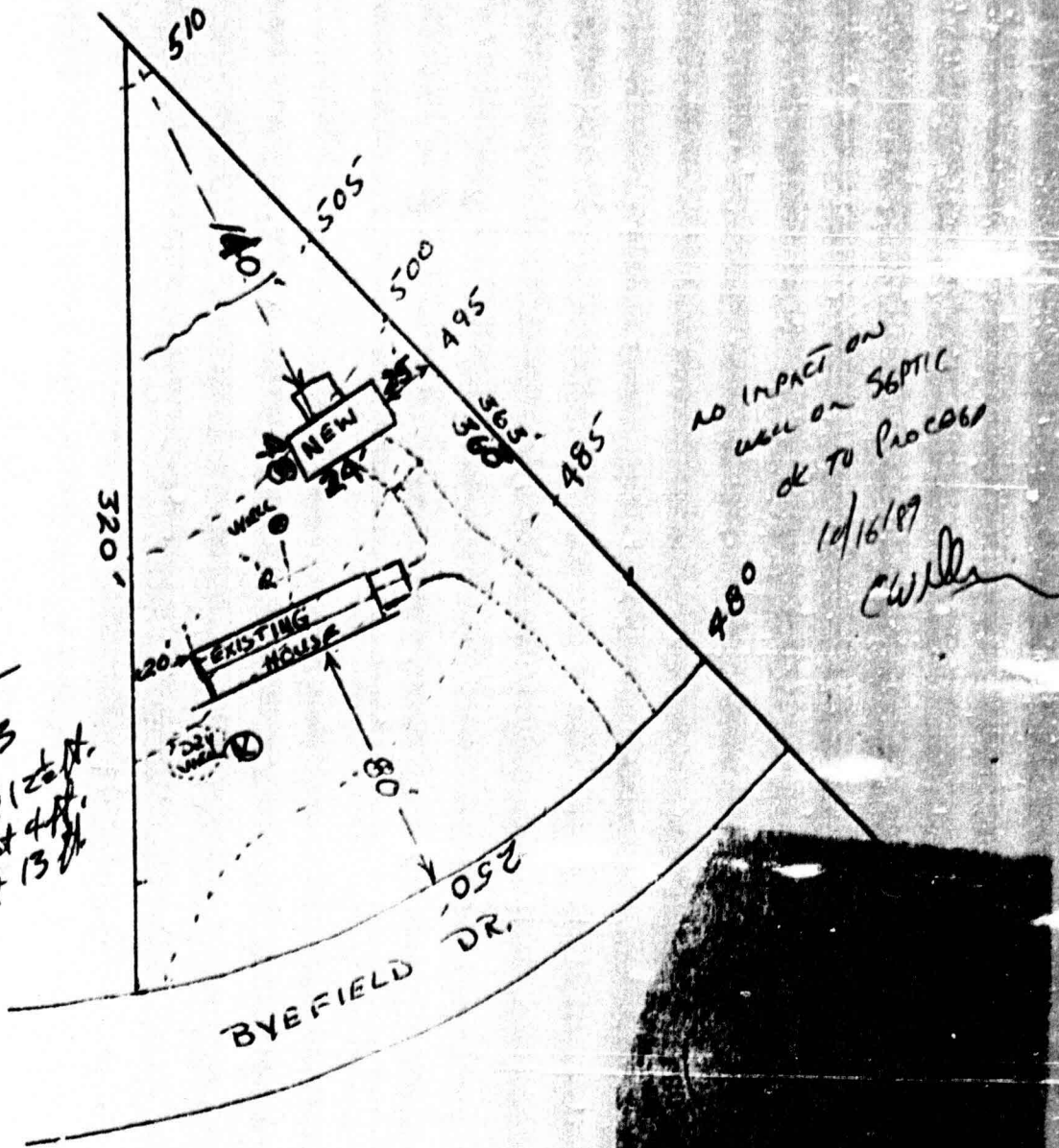


10/75 rebar
 A 22463
 8 min at 12 ft
 5 min at 4 ft
 4 min at 13 ft



NO IMPACT ON
 WELL OR SEPTIC
 OK TO PROCEED
 10/16/07
 CWL

HEMLOCK HILL

HOWARD COUNTY MARYLAND

SCALE 2"=100'